

Figure S1. Color of aqueous extracts of leaves *S. gigantea* and *S. canadensis*, with water (H₂O) and 10% NH₄OH solution; dilution of extracts: v/v – 1/1

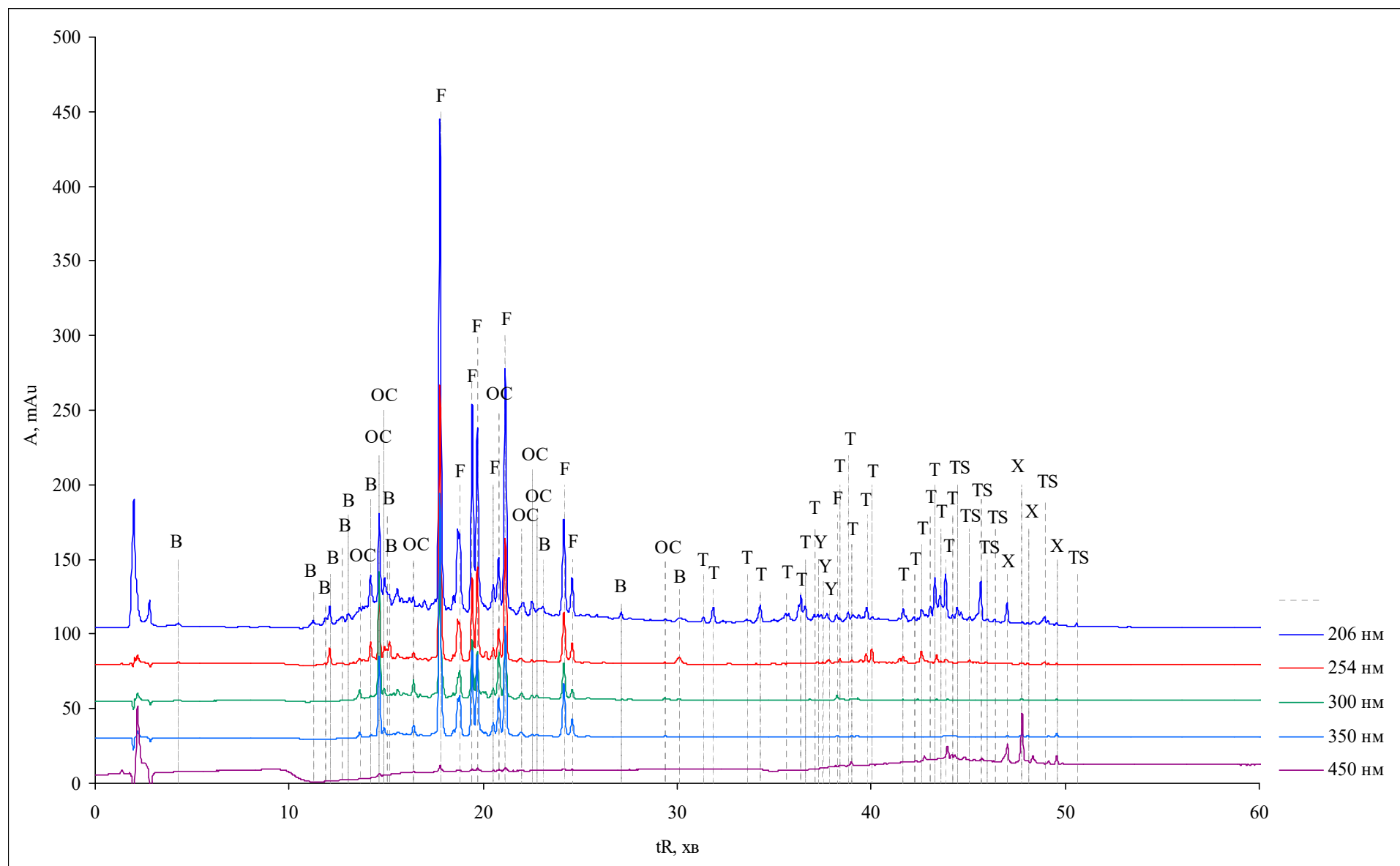


Figure S2. Chromatogram of aqueous extracts of *S. canadensis* leaves before adsorption on Al_2O_3

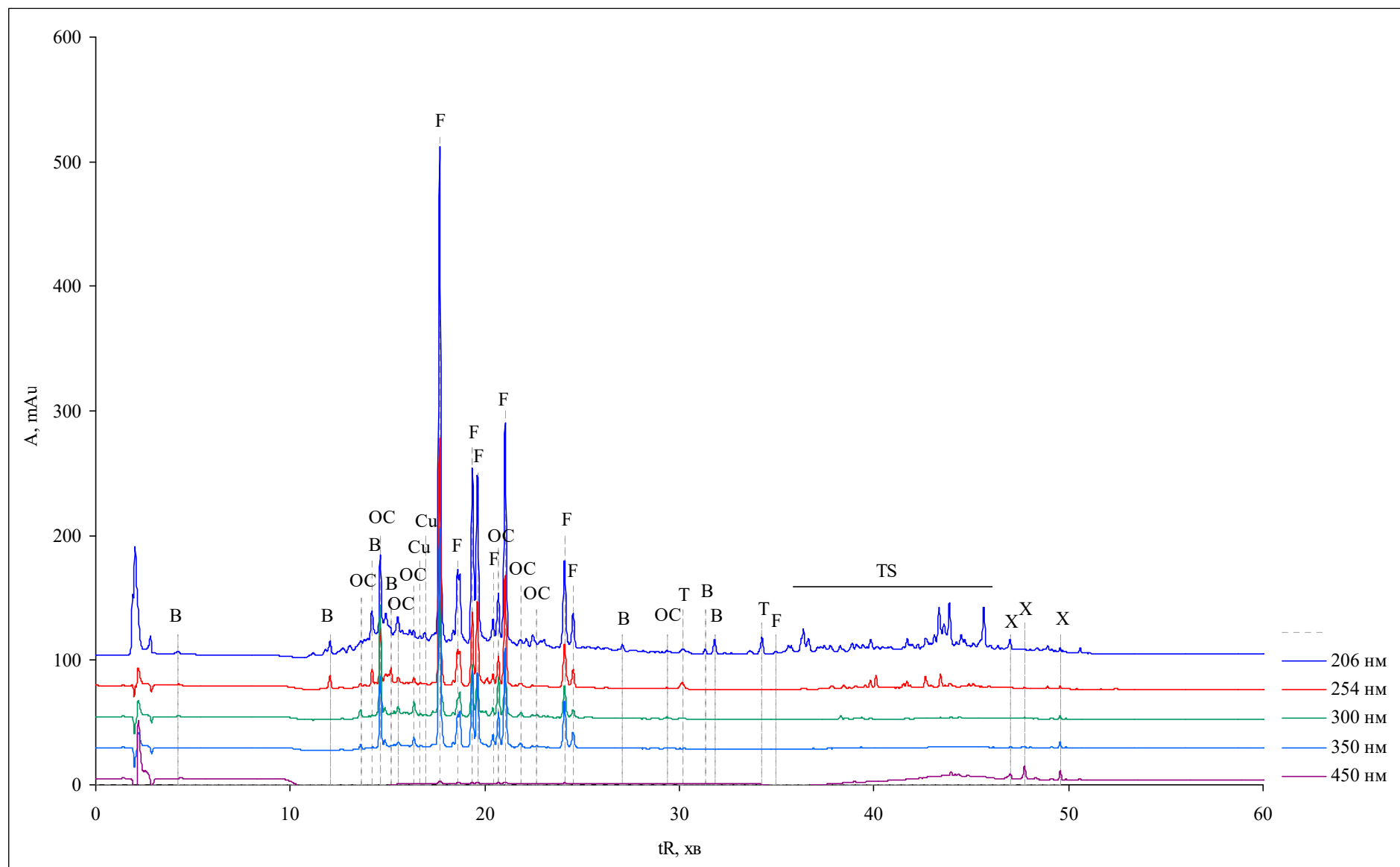


Figure S3. Chromatogram of aqueous extracts of *S. canadensis* leaves after adsorption on Al_2O_3

Table S1. Adsorption capacity of Al₂O₃ for flavonoids from aqueous extract *S. canadensis*

Flavonoid	mAU		Ratio
	before Al ₂ O ₃	after Al ₂ O ₃	
Rutin quercetin-3-O-beta-rutinoside	1587	517	3,07
Astragalin kaempferol-3-O-beta-glucoside	331	117	2,83
Nicotiflorin kaempferol-3-O-beta-rutinoside	762	287	2,66
Quercetin glycoside (Isoquercitrin)	562	253	2,22
Afzelin camperfol-3-O-beta-rhamnoside	142	45	3,16
Quercetin glycoside 1	850	361	2,35
Kaemperfol glycoside	323	157	2,06
Quercetin glycoside 2	142	59	2,41
Total camperfol glycosides	1558	606	2,57
Total quercetin glycosides	3141	1190	2,64
The amount of flavonoids	4699	1796	2,62