

Supplementary materials

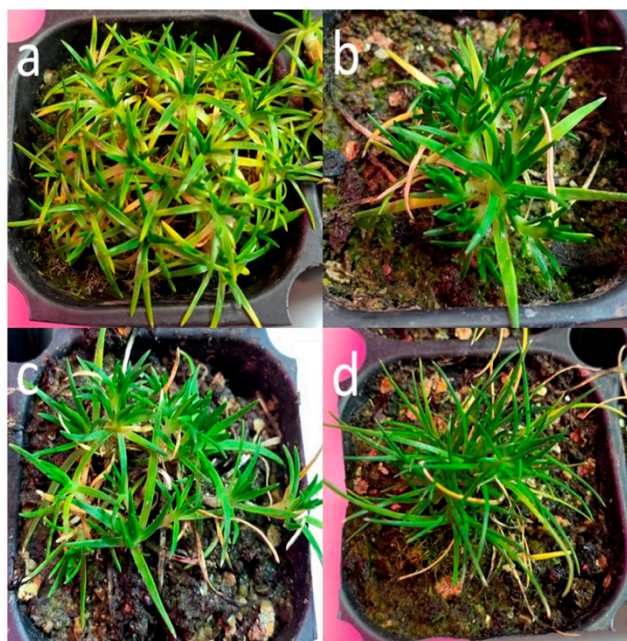


Figure S1. Cushions of different provenances of *Colobanthus quitensis* (a) Arctowski, (b) Punta Arenas, (c) La Parva, (d) Conguillío.

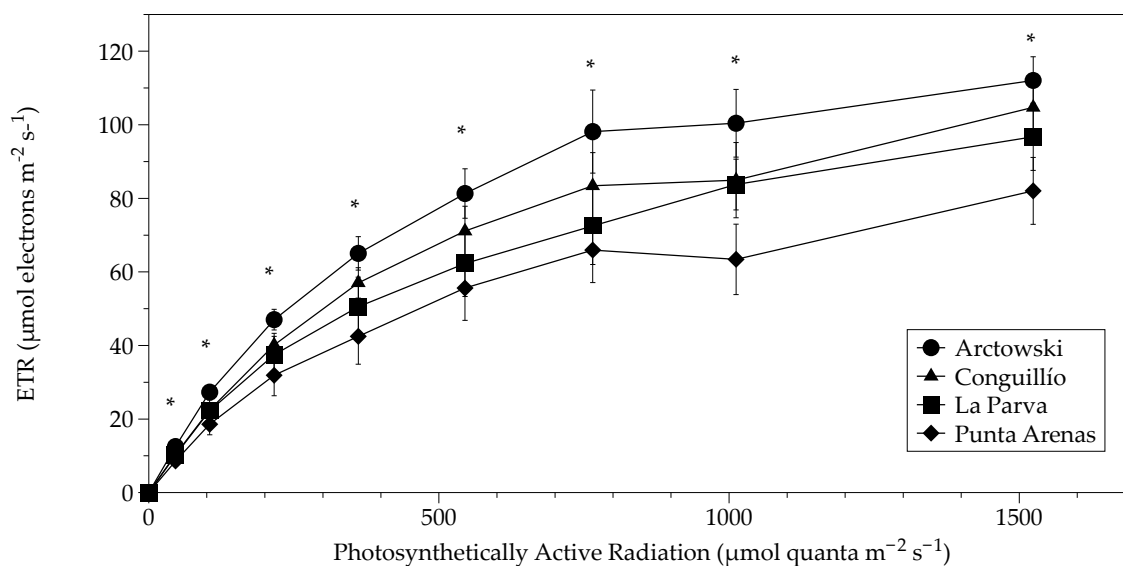


Figure S2. Light response curves of 4 ecotypes of *C. quitensis* at 16 °C. Each point represents the mean value \pm standard deviation ($n = 10$). Asterisks indicate significant differences between at least two of the means ($p < 0.05$).

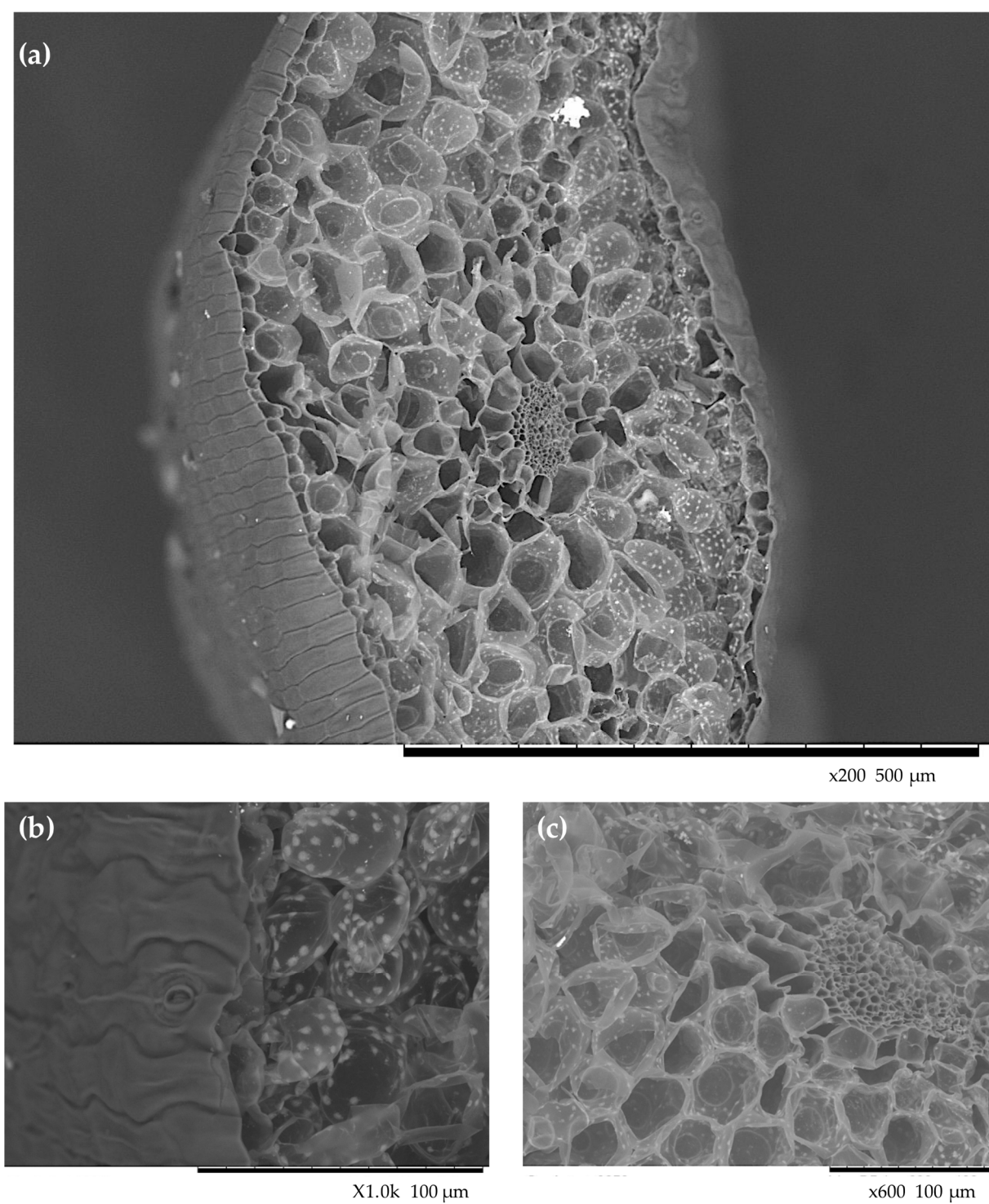


Figure S3. Scanning electron micrograph showing a transverse section of *C. quitensis* leaf (a). A sizeable stomata is visible in (b) and vascular bundle in (c).