

## Supplementary Data

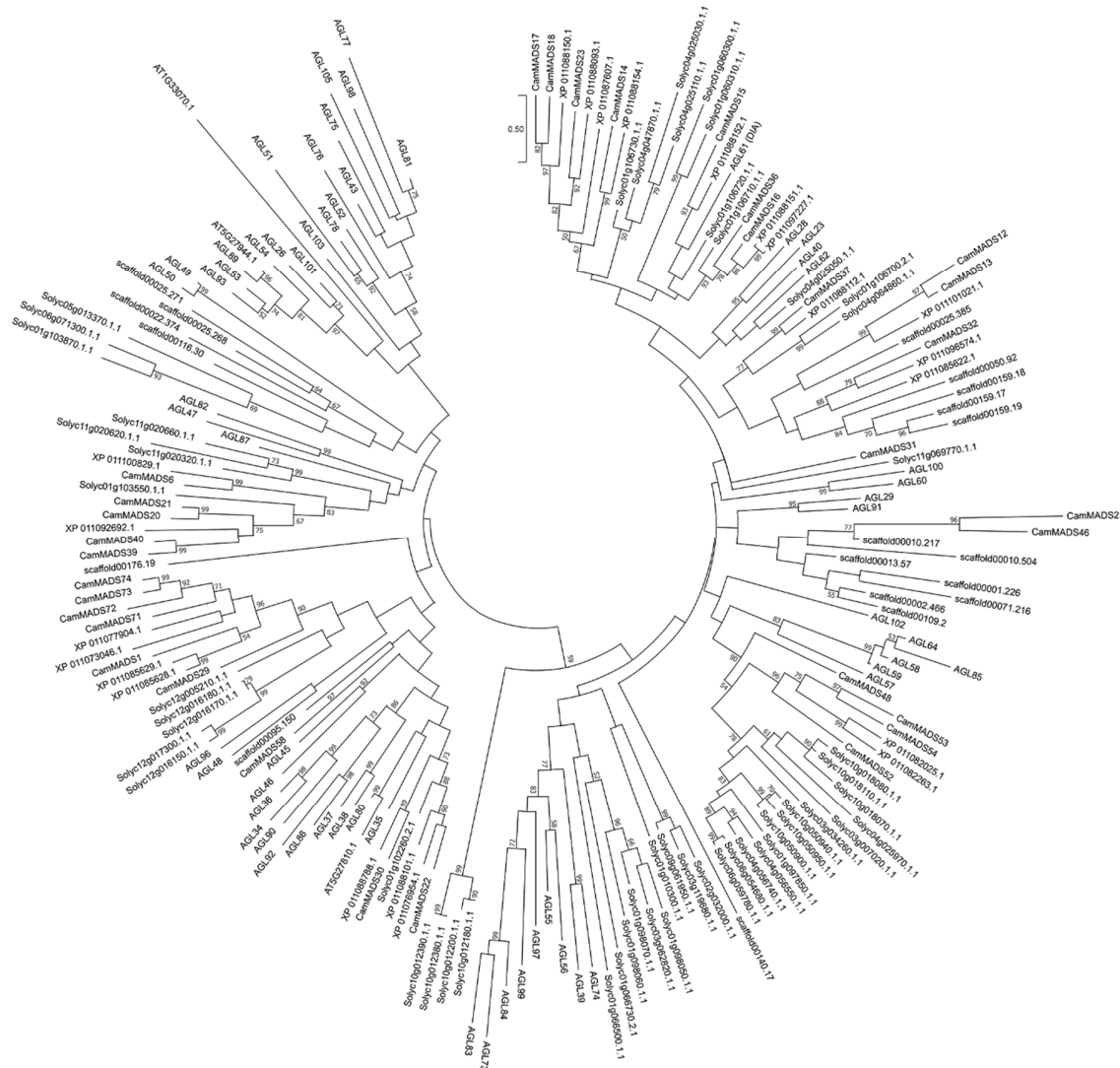
# Genome-wide identification and analysis of the MADS-box gene family in American beautyberry (*Callicarpa americana*)

Tareq Alhindi <sup>1\*</sup>, Ayed M. Al-Abdallat <sup>2</sup>

<sup>1</sup> Department of Biological Sciences, School of Science, The University of Jordan, Amman 11942, Jordan; e-t.alhindi@ju.edu.jo

<sup>2</sup> Department of Horticulture and Crop Science, School of Agriculture, The University of Jordan, Amman 11942, Jordan; a.alabdallat@ju.edu.jo

\* Correspondence: t.alhindi@ju.edu.jo



**Supplementary Figure 1.** Phylogenetic maximum likelihood tree of Type I MADS-box proteins in *C. americana*, *A. thaliana*, *S. lycopersicum*, *S. indicum* and *A. trichopoda*. The 1000 bootstrap values are presented, in addition to branch length with a scale.

