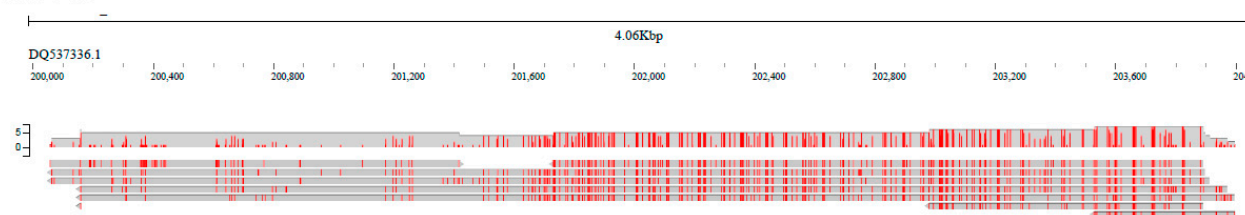


Supplementary Figure S1: PCR results with primer pairs flanking the InDels of Glu-1Bx variant: 180bp (left) and 12bp (right). PCR was conducted with genomic DNA of wheat cv. Chinese Spring (no insertions) and triticale cv. L8665 (insertions are present).

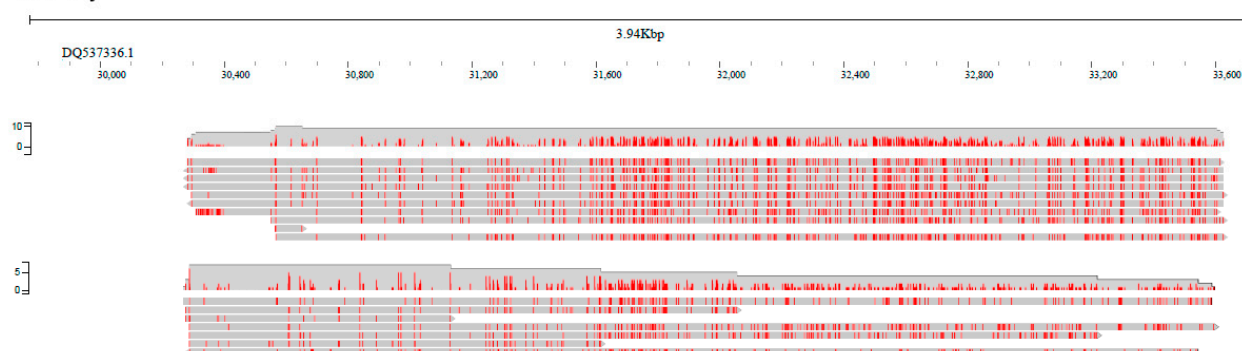


Supplementary Figure S2: Neighbor-joining phylogenetic tree constructed after multiple alignment of unique parts of CDS region of HP1 and HP2 alleles of Glu-1By gene.

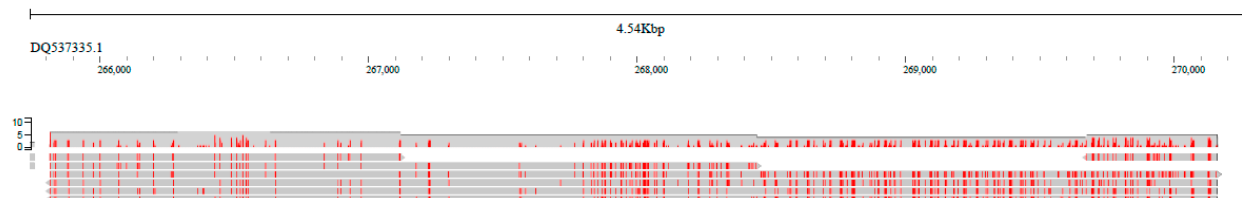
Glu-1Bx



Glu-1By



Glu-1Ax



Supplementary Figure S3: Per-read methylation distribution of the three glutenin genes obtained after DeepSignal-plant methylation calling. For visualization the MM tag was added to alignments in the bam file using DeepS2bam_converter. The visualization was performed in JBrowse2 (<https://jbrowse.org/jb2/>) installed on the local server.