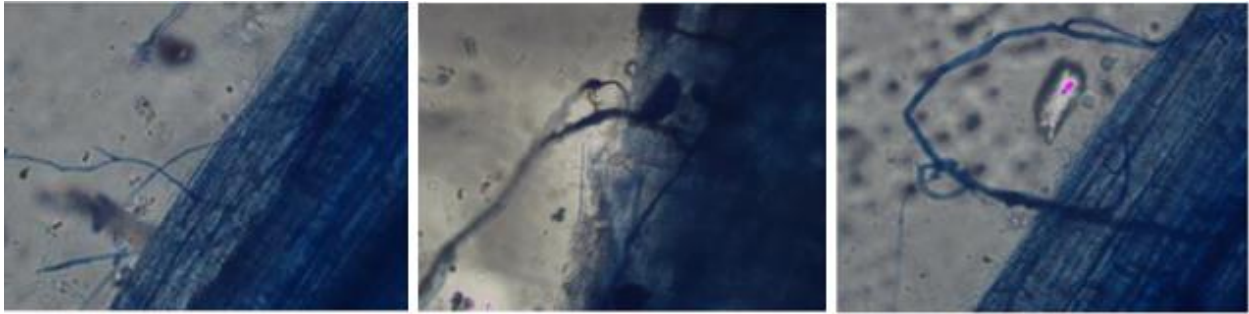
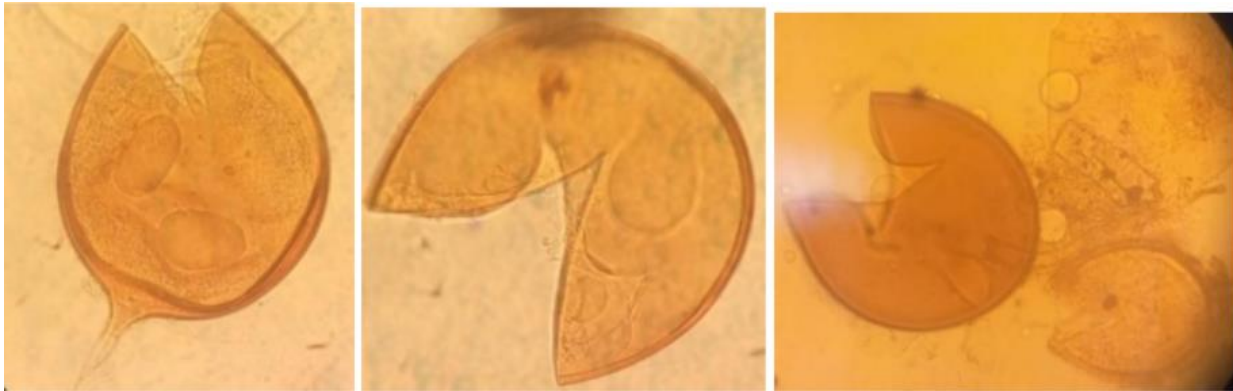


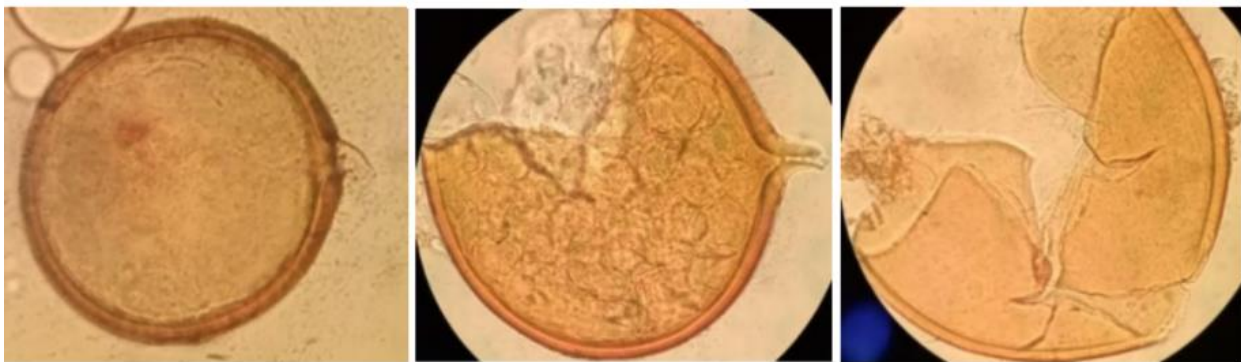
Supplement S1. Colonization in potted *M. volkensii* seedlings from Kiambere: Pictures representing different forms of entry points with the hyphae at the point of penetrating the surface of the roots.



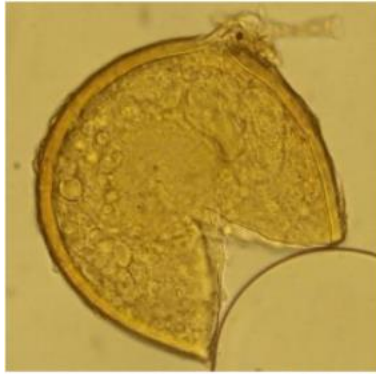
Supplement S2. Different Arbuscular Mycorrhiza Spore Morphotypes potted *M. volkensii* seedlings from Kiambere



1. Glomoid type of spores



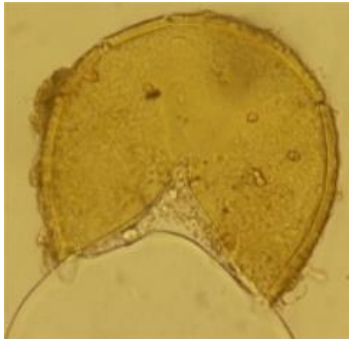
2. Glomoid spore type



3. M1 Glomoid PVLG



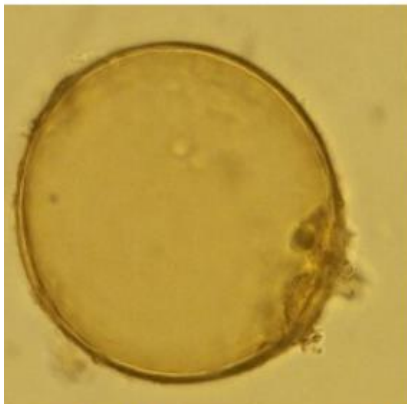
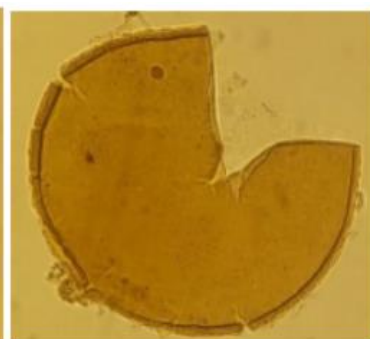
M1 Glomoid PVLG + Melzer



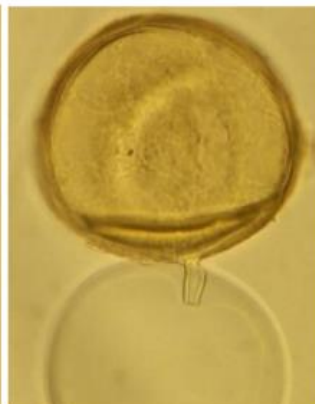
4. Glomoid PVLG



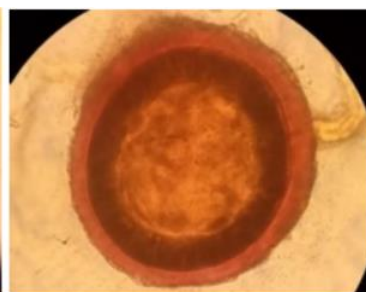
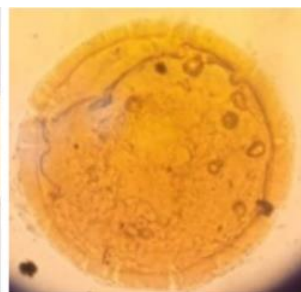
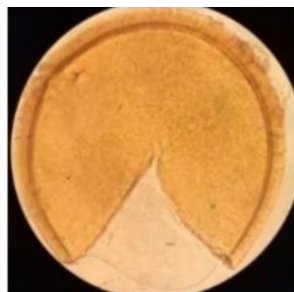
M1 Glomoid PVLG+ Melzer



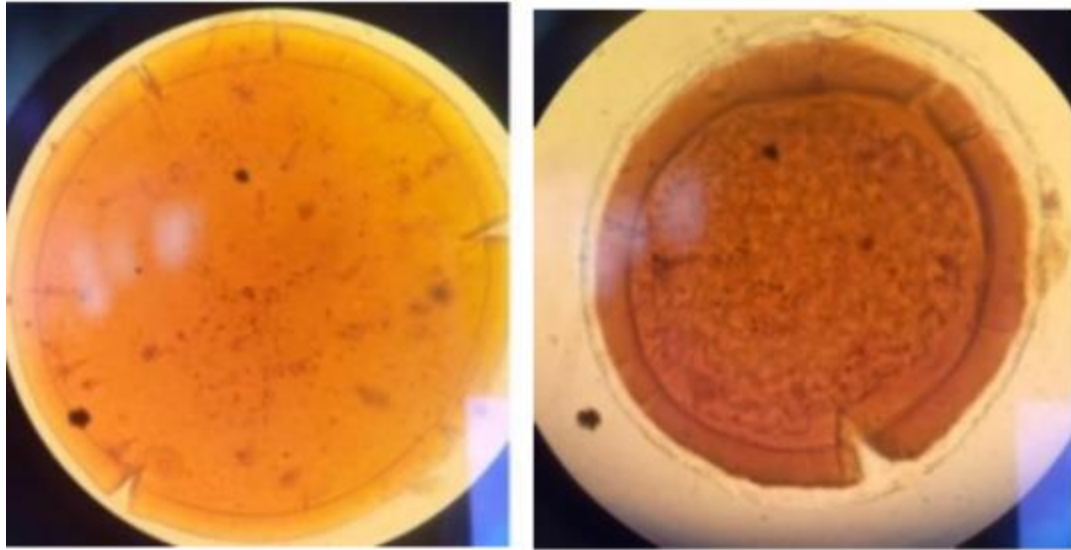
5. N91 Glomoid PVLG



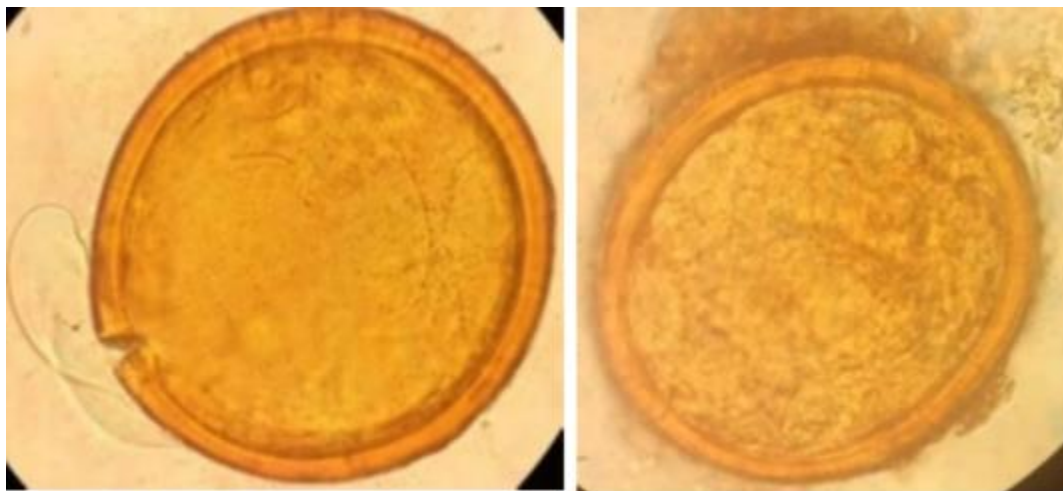
N91 Glomoid PVLG + Melzer



6. *Diversispora* sp. (With expanding walls), spore at center is parasitized and far right is stained with Melzer's reagent.



6. *Diversispora?* (Explanation as above)

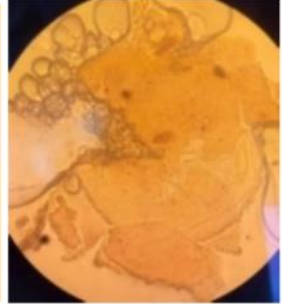
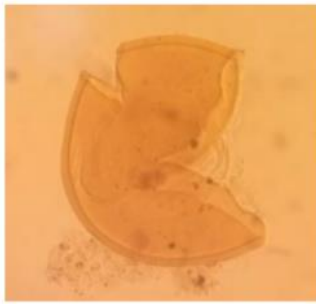
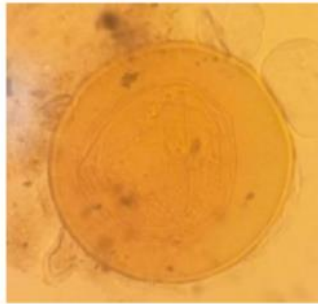
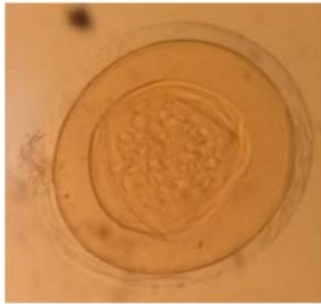


7. Glomoid species



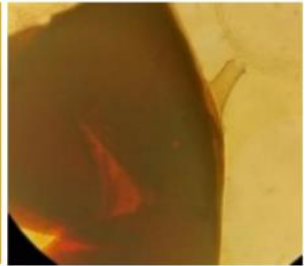
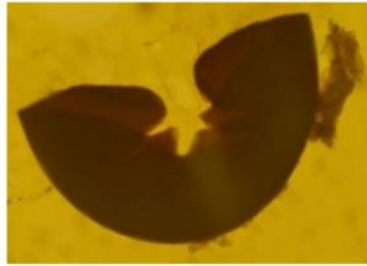
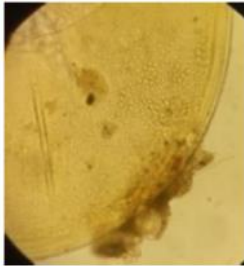
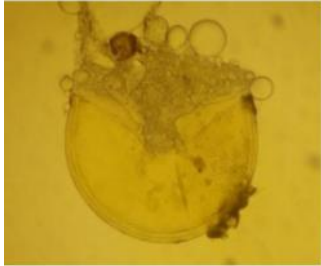
8. *Acaulospora scrobiculata* PVLG

PVLG + Melzer



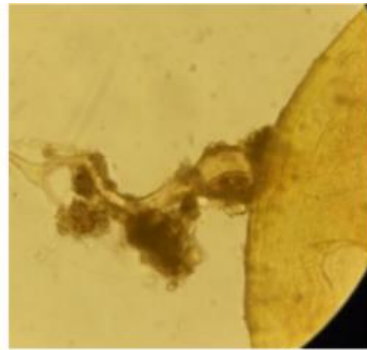
9. Acaulosporaceae

9. Acaulosporaceae



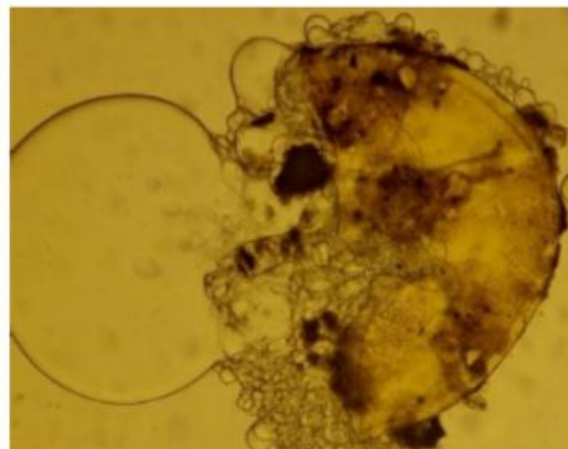
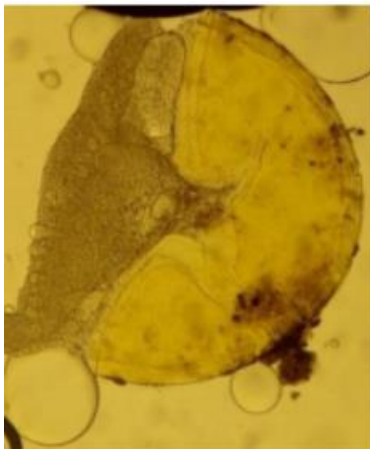
10. Gigasporaceae PVLG

Gigasporaceae PVLG + Melzers

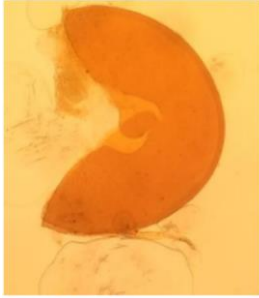


10. Gigasporaceae in PVLG

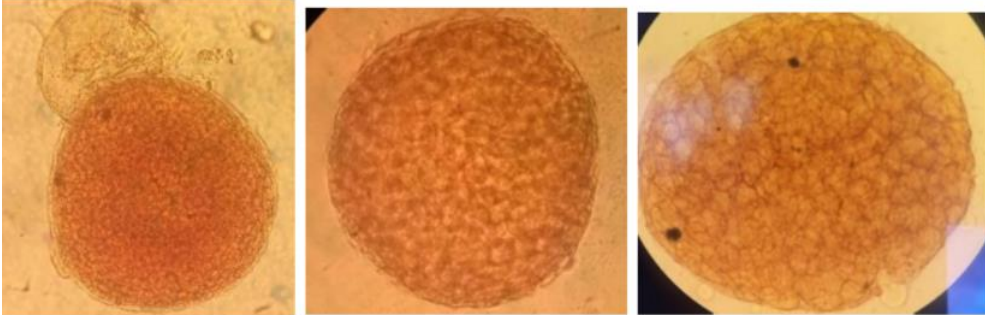
Gigasporaceae PVLG + Mel



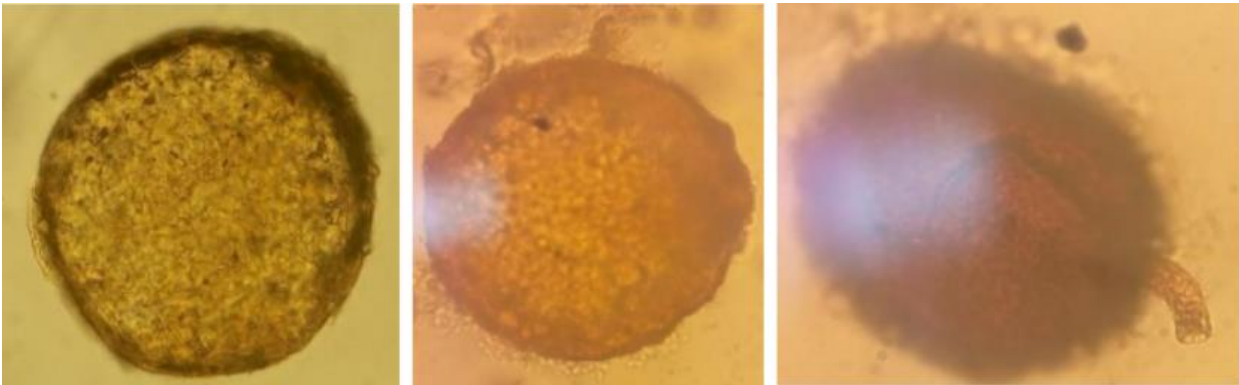
10. Gigasporaceae



11. *Gigaspora margarita*



12. Uncertain Identity morphotype with defined shape and inner oily contents and ornamentation is consistent.



13. Sporocarp in formative stage with thin mycelial sheath?