

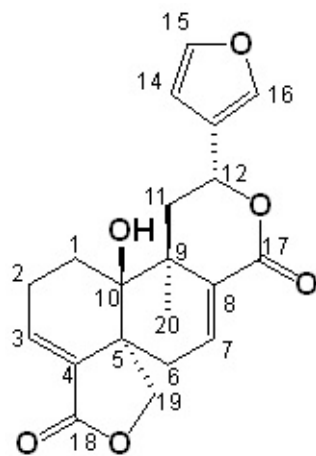
Eupatorin and salviandulin-A, with antimicrobial and anti-inflammatory effect of *Salvia lavanduloides* Kunth leaves

Manasés González-Cortazar ¹, David Osvaldo Salinas-Sánchez ^{2,3,*}, Maribel Herrera-Ruiz ¹,
Dionisio Celerino Román-Ramos ³, Alejandro Zamilpa ¹, Enrique Jiménez-Ferrer ¹, Ever A. Ble-González ⁴,
Patricia Álvarez-Fitz ⁵, Ricardo Castrejón-Salgado ⁶ and Ma. Dolores Pérez-García ^{1,*}

- ¹ Centro de Investigación Biomédica del Sur, Instituto Mexicano del Seguro Social, Argentina No. 1, Col. Centro, Xochitepec 62790, Morelos, Mexico; gmanases2000@gmail.com (M.G.-C.); edanae10@yahoo.com.mx (M.H.-R.); azamilpa_2000@yahoo.com.mx (A.Z.); enriqueferrer_mx@yahoo.com (E.J.-F.)
 - ² Centro de Investigación en Biodiversidad y Conservación (CIByC), Universidad Autónoma del Estado de Morelos (UAEM), Av. Universidad 1001, Col. Chamilpa, Cuernavaca 62209, Morelos, Mexico
 - ³ Escuela de Estudios Superiores del Jicarero (EESJ), Universidad Autónoma del Estado de Morelos, Carretera Galeana-Tequesquitengo s/n Col. el Jicarero, Jojutla 62909, Morelos, Mexico; roman.ramos.dionisio@gmail.com
 - ⁴ División Académica de Ciencias Básicas, Universidad Juárez Autónoma de Tabasco, Carretera Cunduacán-Jalpa Km. 0.5, Cunduacán 86690, Tabasco, Mexico; ble_49@hotmail.com
 - ⁵ Laboratorio de Toxicología, Cátedra CONACyT-Universidad Autónoma de Guerrero, Av. Lázaro Cárdenas s/n. Col. La Haciendita, Chilpancingo 39070, Guerrero, Mexico; paty_fitz@hotmail.com
 - ⁶ Instituto Mexicano del Seguro Social, Unidad de Medicina Familiar Número 3, Avenida Insurgentes Esquina con Emiliano Zapata s/n., Centro, Jiutepec 62550, Morelos, Mexico; carisal13@hotmail.com
- * Correspondence: davidos@uaem.mx (D.O.S.-S.); lola_as@yahoo.com.mx (M.D.P.-G.); Tel.: +52-(777)-3297019 (D.O.S.-S.); +52-(777)-3612155 (M.D.P.-G.)

Content

- Figure S1.** ¹H NMR (CDCl₃, 600 MHz) of compound (1)
- Figure S2.** ¹³C NMR (CDCl₃, 150 MHz) of compound (1)
- Figure S3.** ³C (DEPT) NMR (CDCl₃, 150 MHz) of compound (1)
- Figure S4.** ¹H-¹H COSY NMR (CDCl₃, 600 MHz) of compound (1)
- Figure S5.** ¹H-¹³C (HSQC) NMR (CDCl₃, 600 MHz) of compound (1)
- Figure S6.** ¹H-¹³C (HMBC) NMR (CDCl₃, 600 MHz) of compound (1)
- Figure S7.** ¹H NMR (CDCl₃, 600 MHz) of salviandulin (2)
- Figure S8.** ¹³C NMR (CDCl₃, 150 MHz) of salviandulin (2)
- Figure S9.** ³C (DEPT) NMR (CDCl₃, 150 MHz) of salviandulin (2)
- Figure S10.** ¹H-¹H COSY NMR (CDCl₃, 600 MHz) of salviandulin (2)
- Figure S11.** ¹H-¹³C (HSQC) NMR (CDCl₃, 600 MHz) of salviandulin (2)
- Figure S12.** ¹H-¹³C (HMBC) NMR (CDCl₃, 600 MHz) of salviandulin (2)
- Figure S13.** ¹H NMR (CD₃COCD₃, 600 MHz) of eupatorin (3)
- Figure S14.** ¹³C NMR (CD₃COCD₃, 150 MHz) of eupatorin (3)
- Figure S15.** ³C (DEPT) NMR (CD₃COCD₃, 150 MHz) of eupatorin (3)
- Figure S16.** ¹H-¹H COSY NMR (CD₃COCD₃, 600 MHz) of eupatorin (3)
- Figure S17.** ¹H-¹³C (HSQC) NMR (CD₃COCD₃, 600 MHz) of eupatorin (3)
- Figure S18.** ¹H-¹³C (HMBC) NMR (CD₃COCD₃, 600 MHz) of eupatorin (3)



Compound (1)

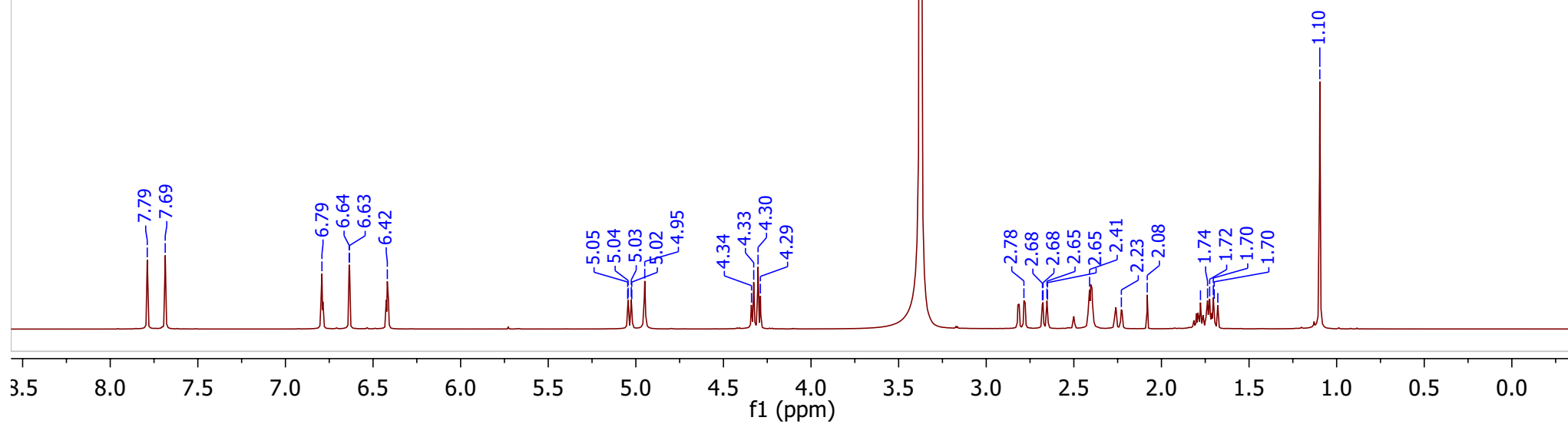
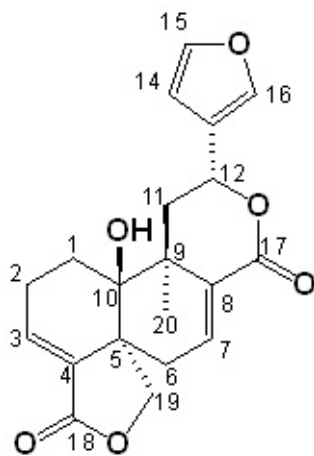


Figure S1. ¹H NMR (CDCl₃, 600 MHz) of compound (1)



Compound (1)

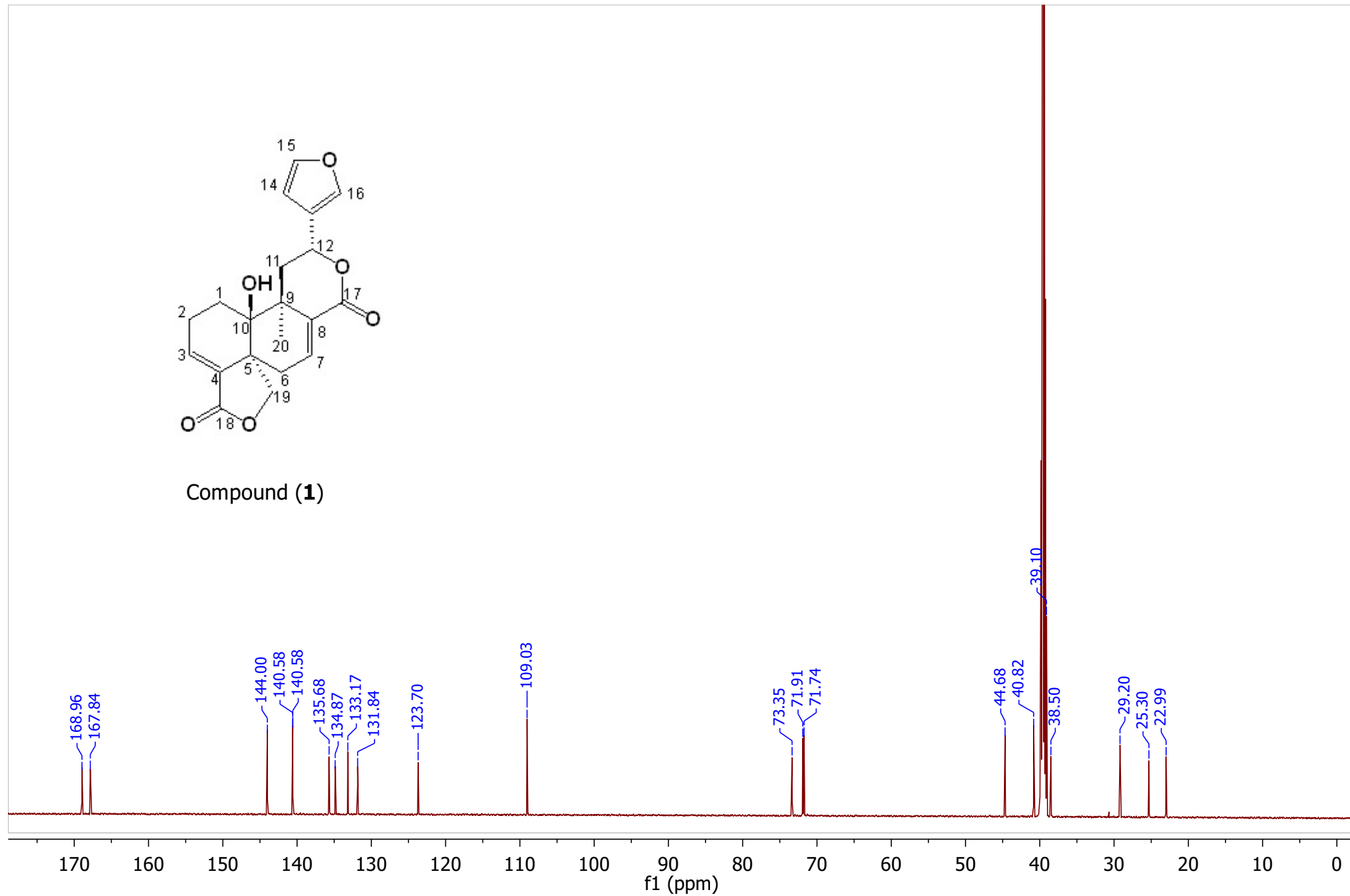
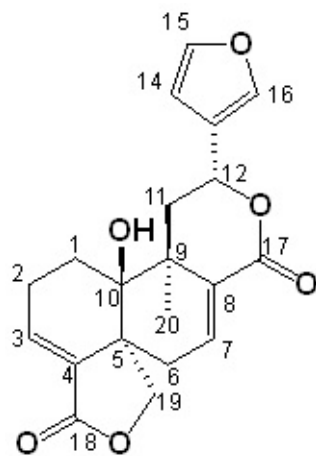


Figure S2. ^{13}C NMR (CDCl₃, 150 MHz) of compound (1)



Compound (**1**)

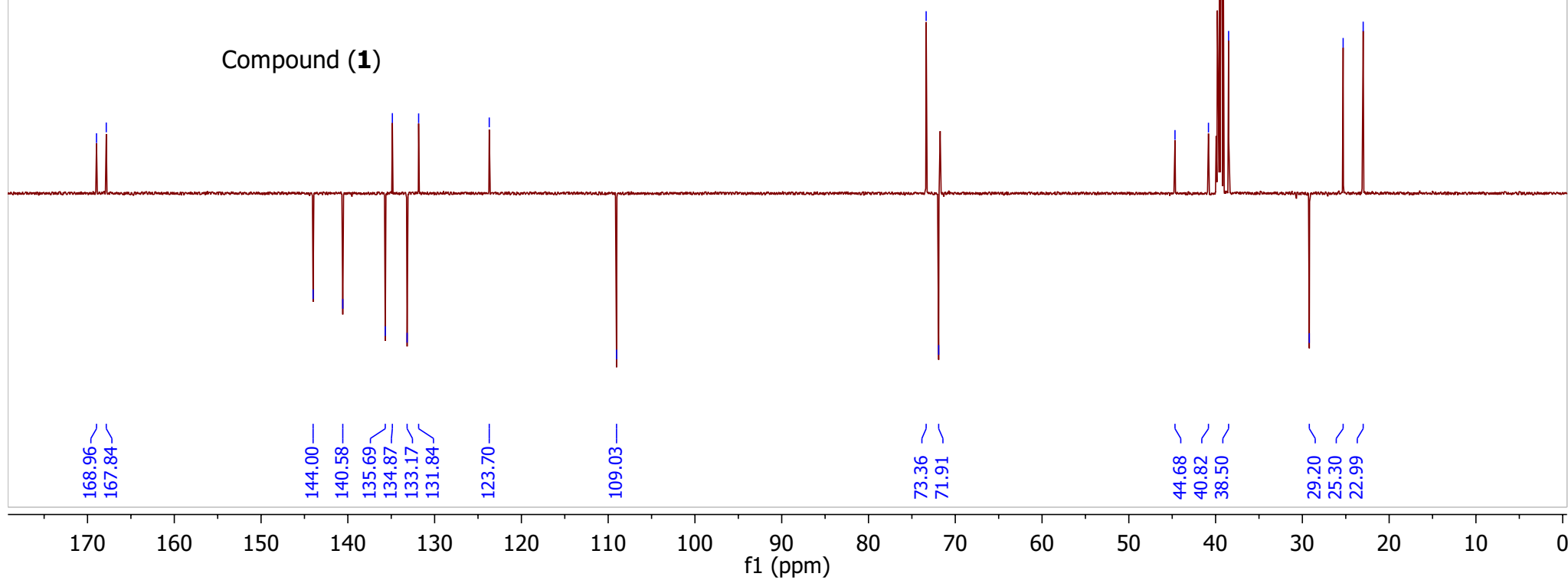


Figure S3. ^{13}C (DEPT) NMR (CDCl_3 , 150 MHz) of compound (**1**)

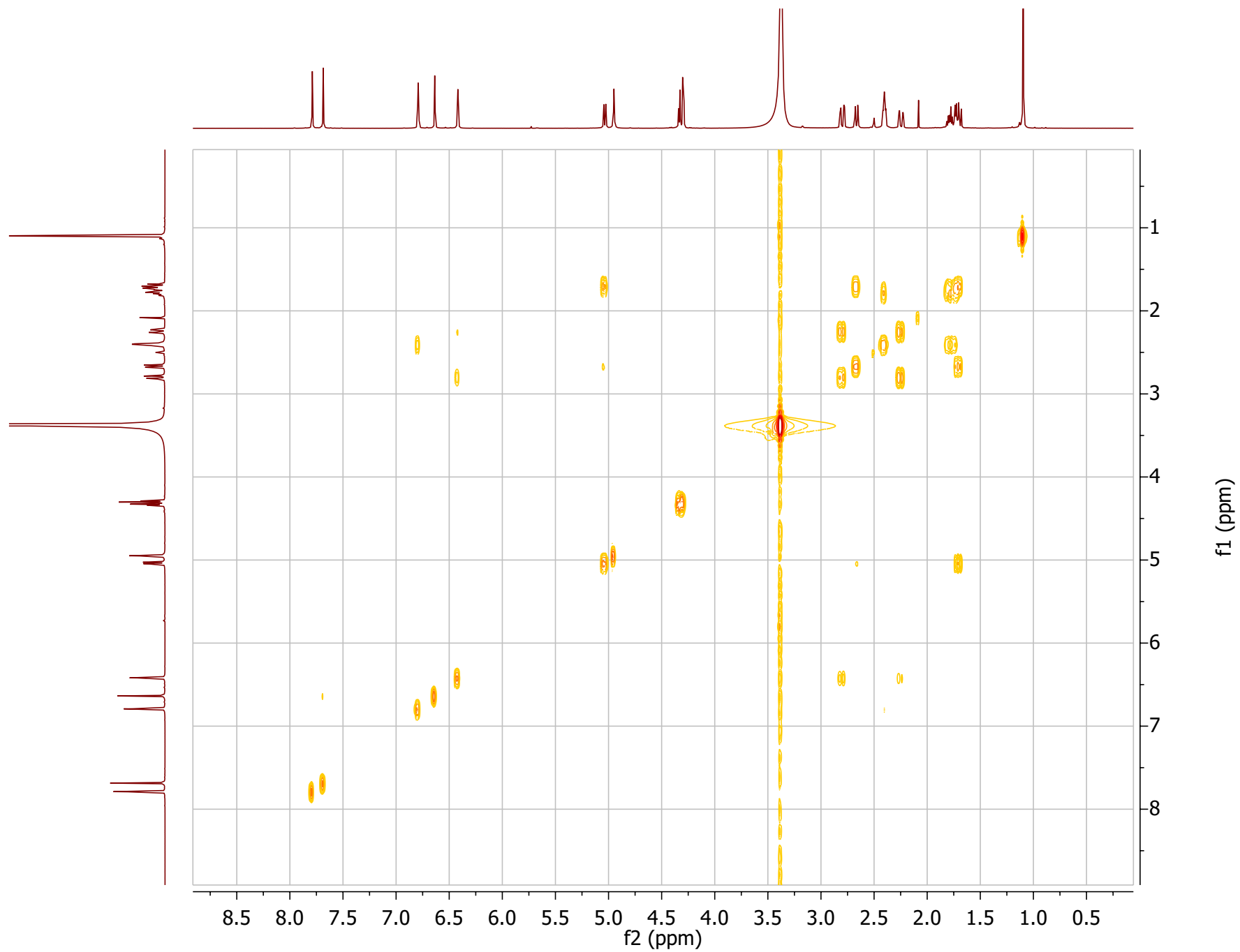


Figure S4. ^1H - ^1H COSY NMR (CDCl_3 , 600 MHz) of compound **(1)**

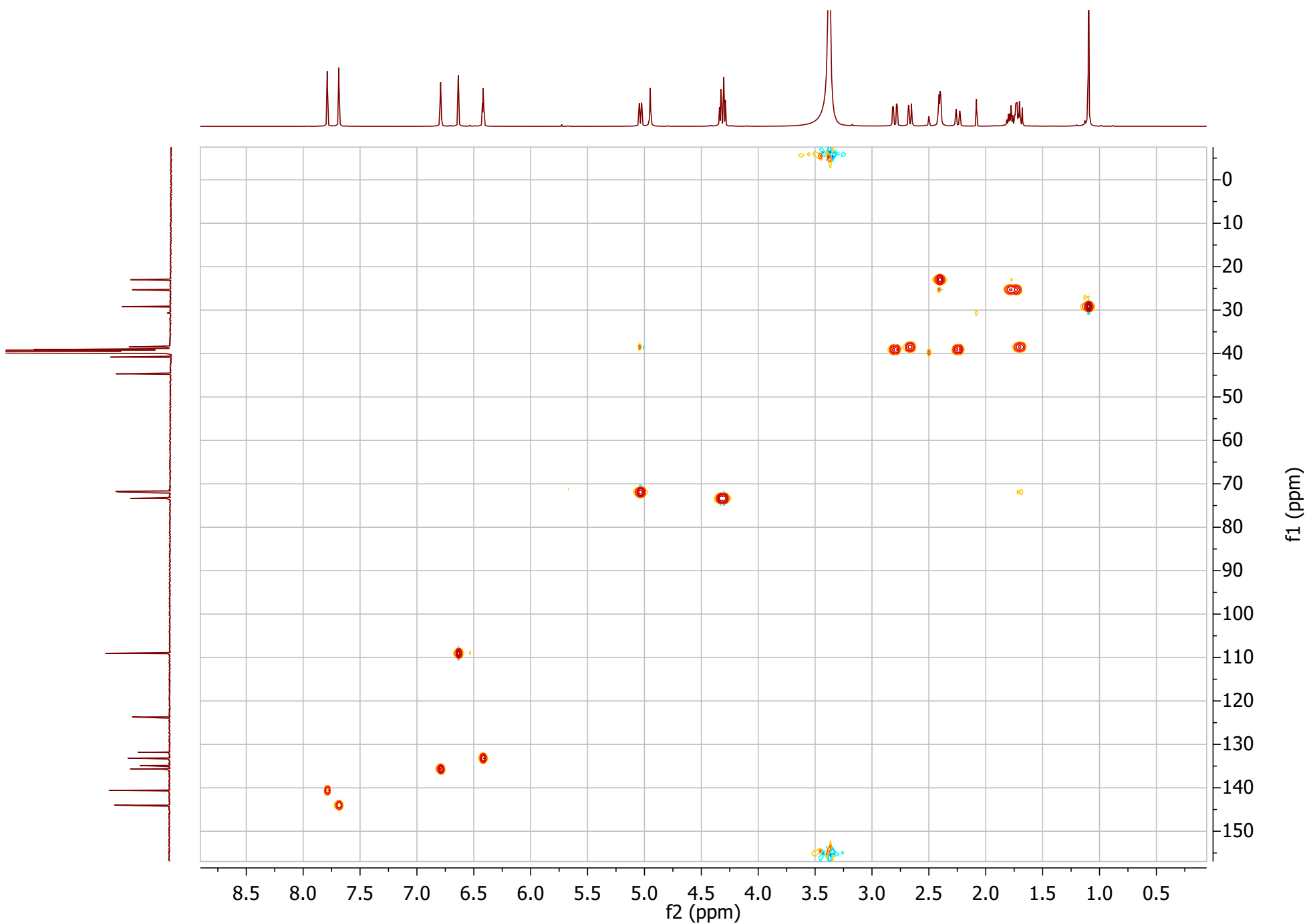


Figure S5. ^1H - ^{13}C (HSQC) NMR (CDCl_3 , 600 MHz) of compound (**1**)

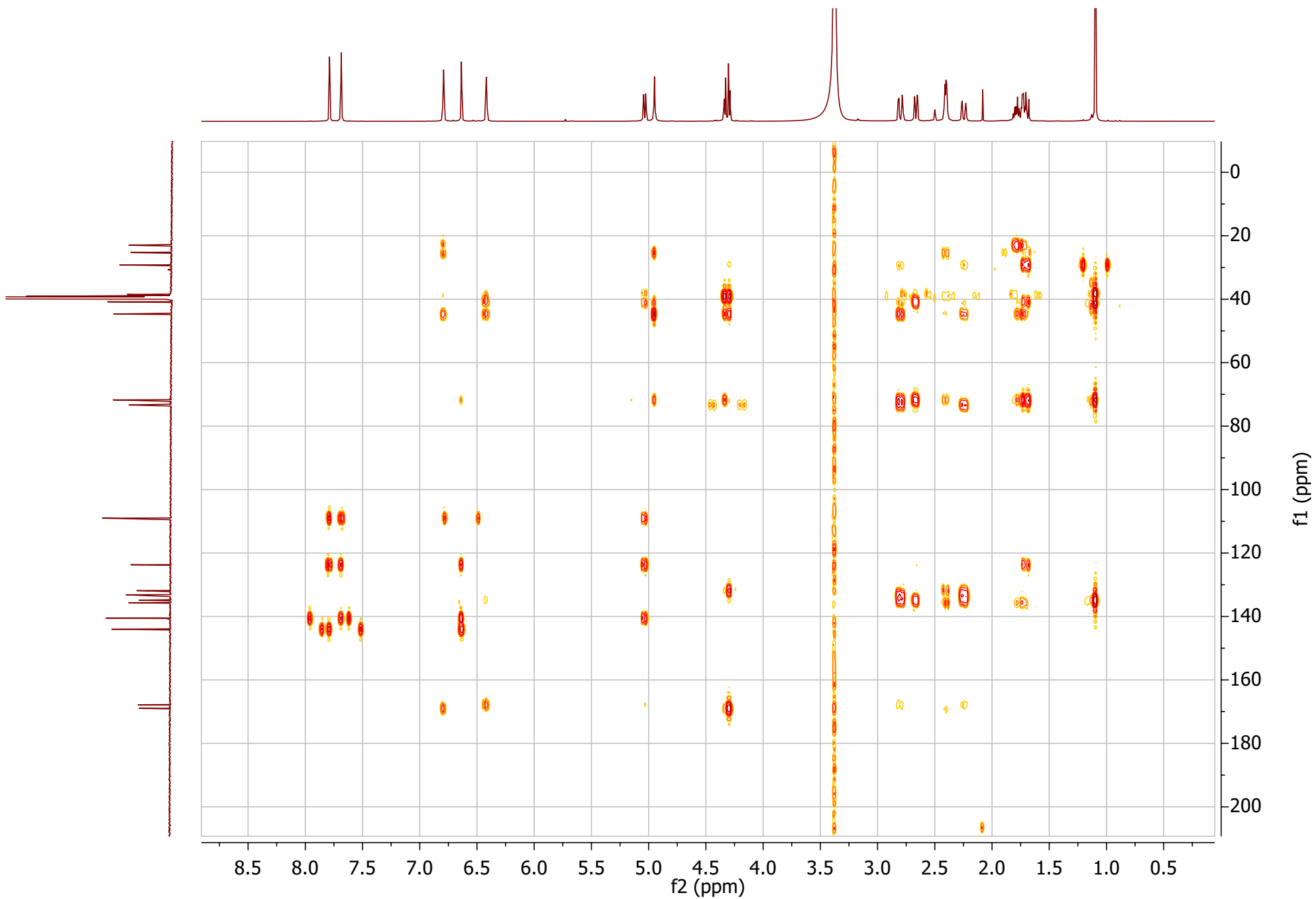


Figure S6. ^1H - ^{13}C (HMBC) NMR (CDCl_3 , 600 Mhz) of compound (**1**)

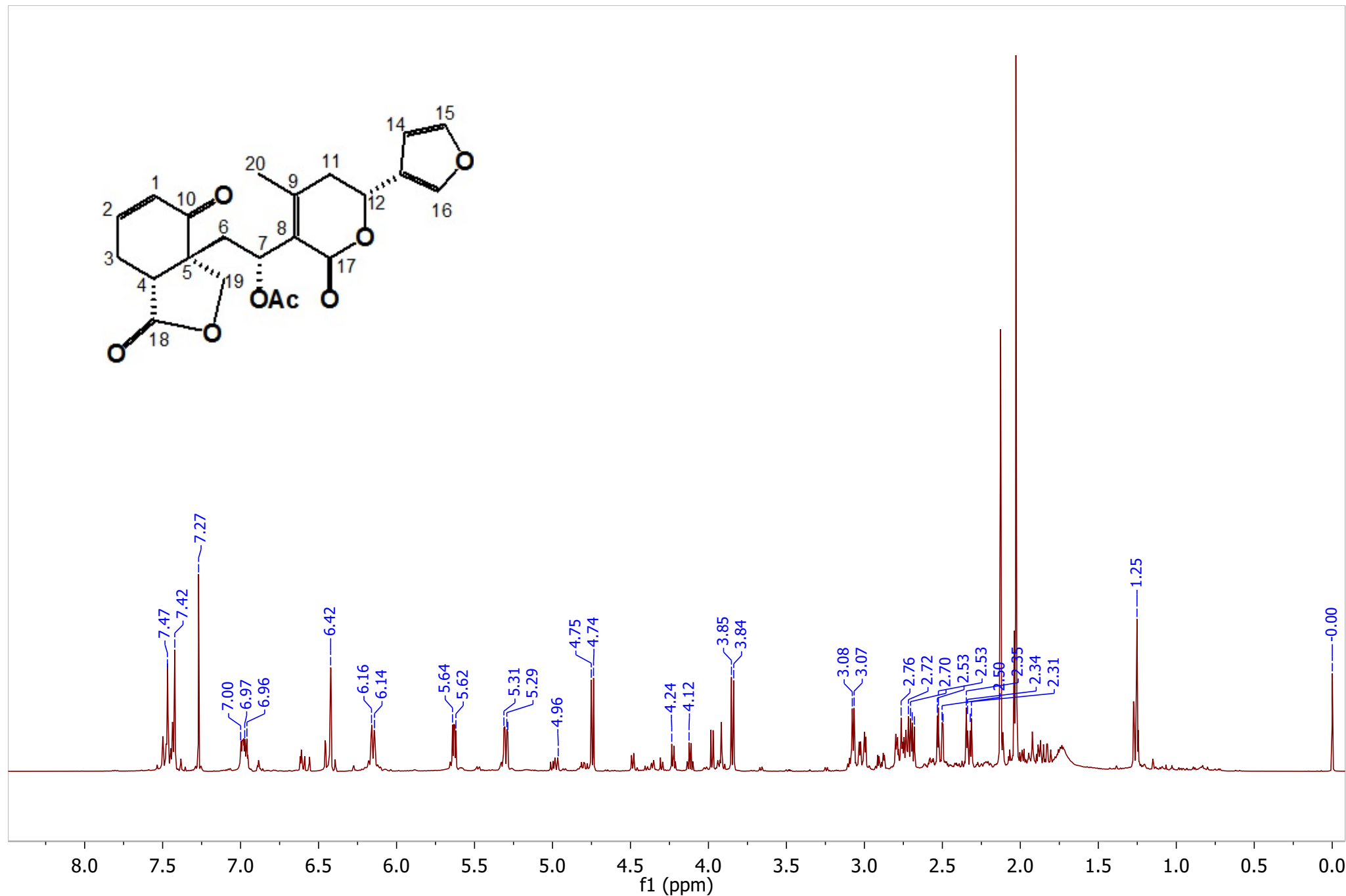


Figure S7. ¹H NMR (CDCl₃, 600 MHz) of salviandulin A (**2**)

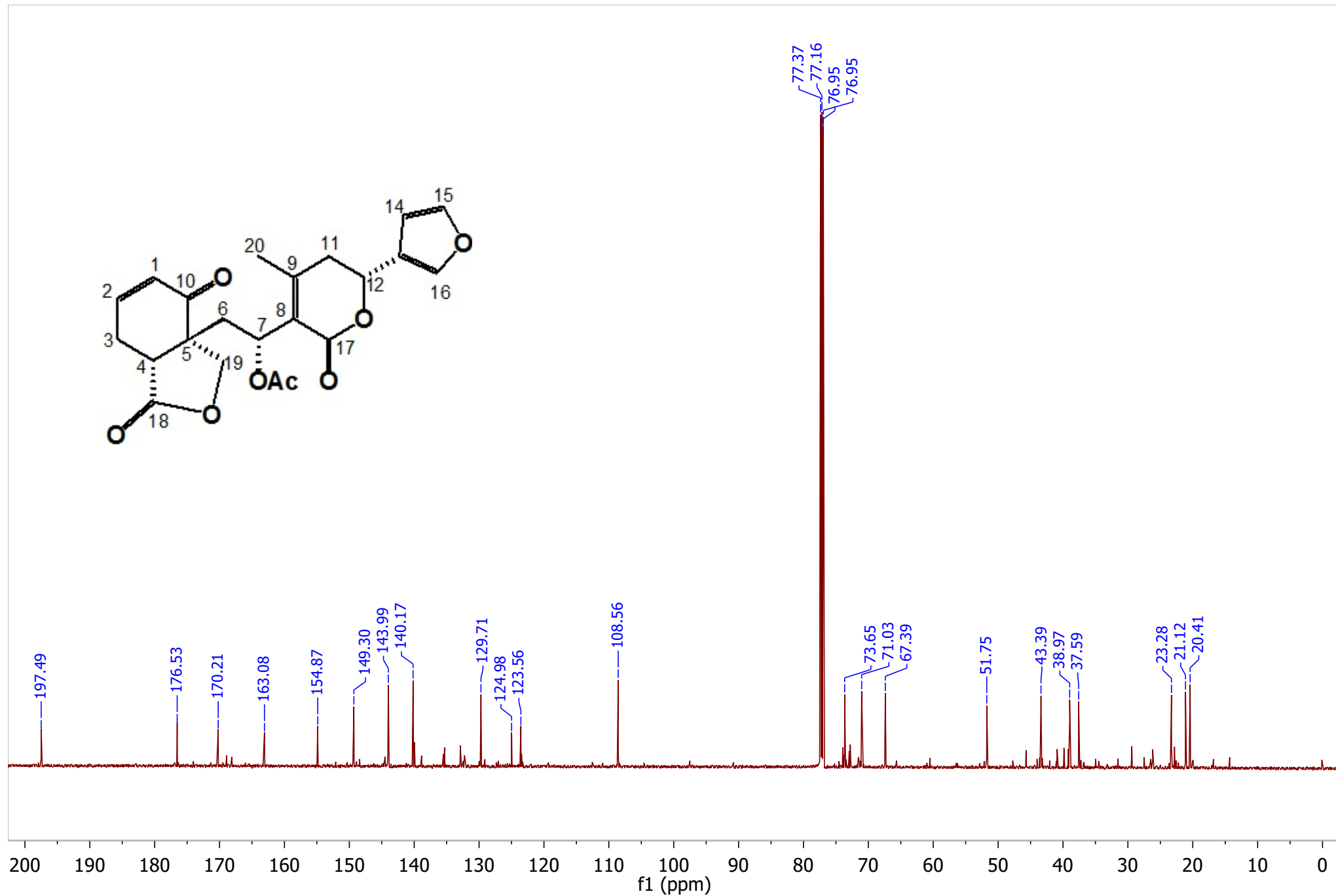


Figure S8. ^{13}C NMR (CDCl₃, 150 MHz) of salviandulin A (2)

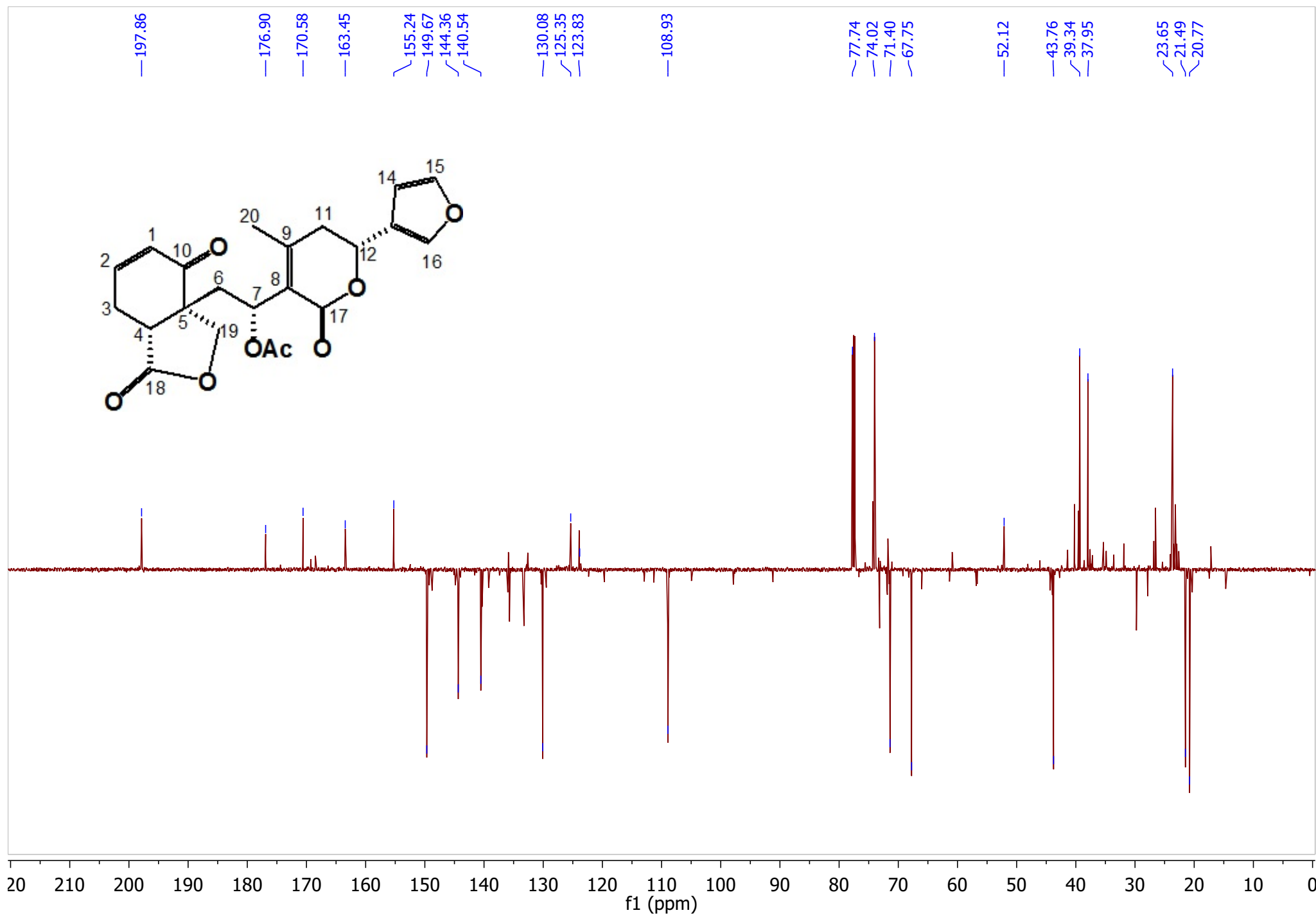


Figure S9. ^{13}C (DEPT) NMR (CDCl_3 , 150 MHz) of salviandulin A (**2**)

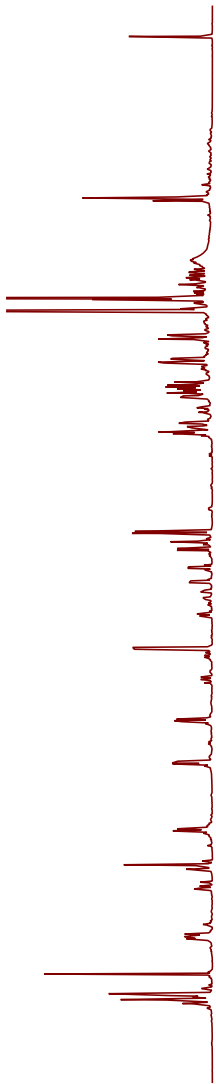


Figure S10. ^1H - ^1H COSY NMR (CDCl_3 , 600 MHz) of salviandulin A (**2**)

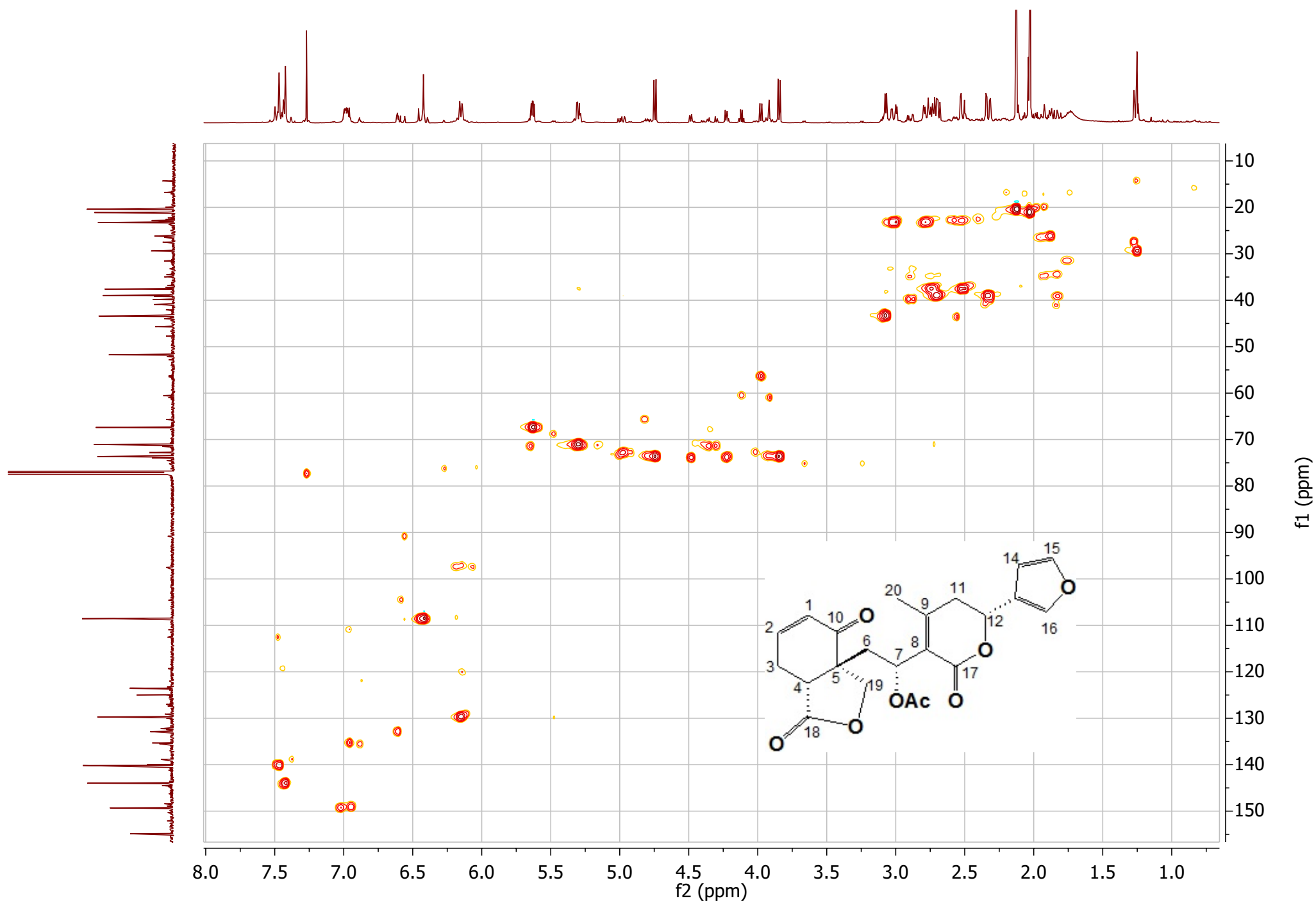


Figure S11. ^1H - ^{13}C (HSQC) NMR (CDCl_3) of salviandulin A (2)

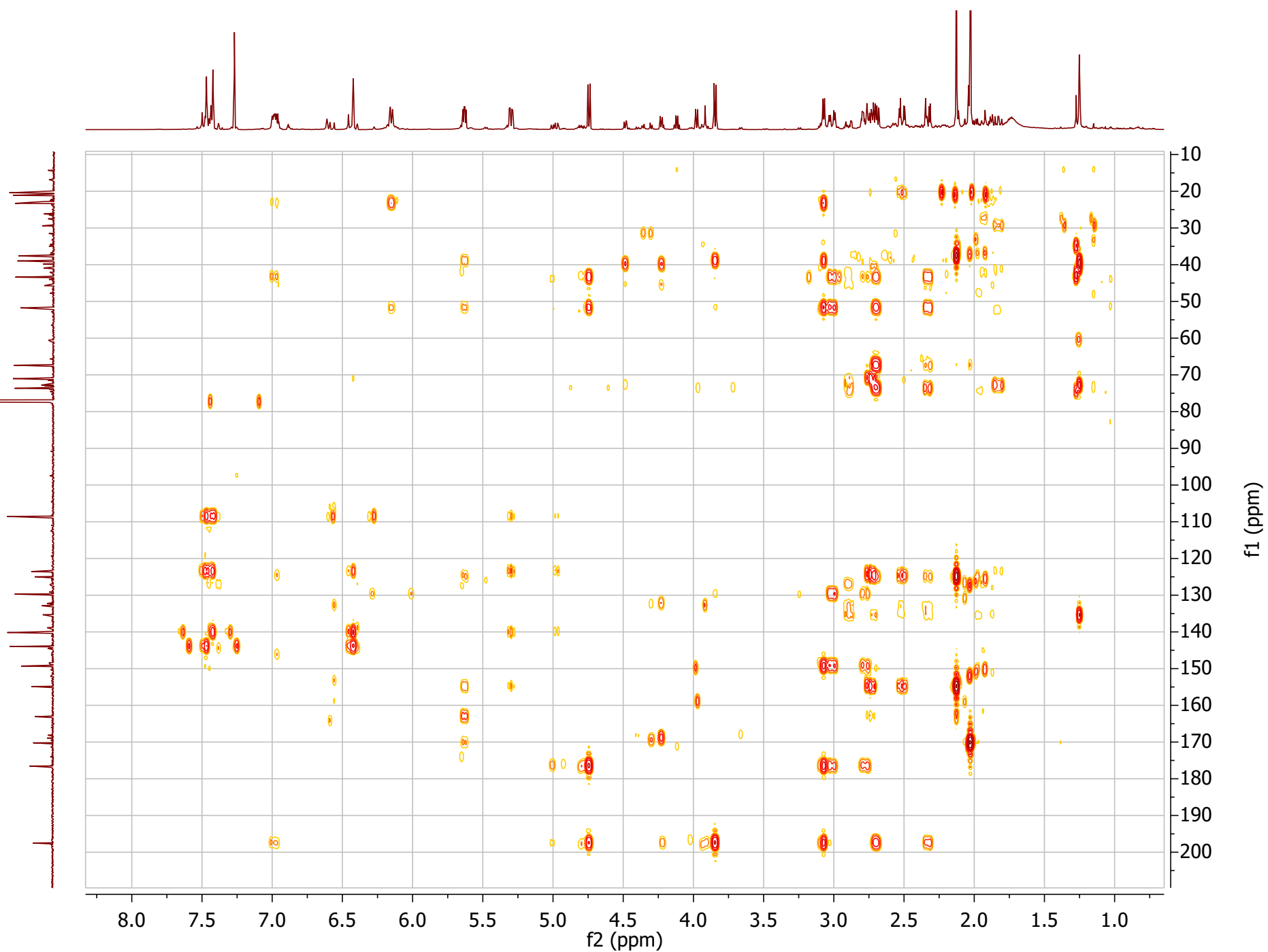


Figure S12. ^1H - ^{13}C (HMBC) NMR (CDCl_3) of salviandulin A (**2**)

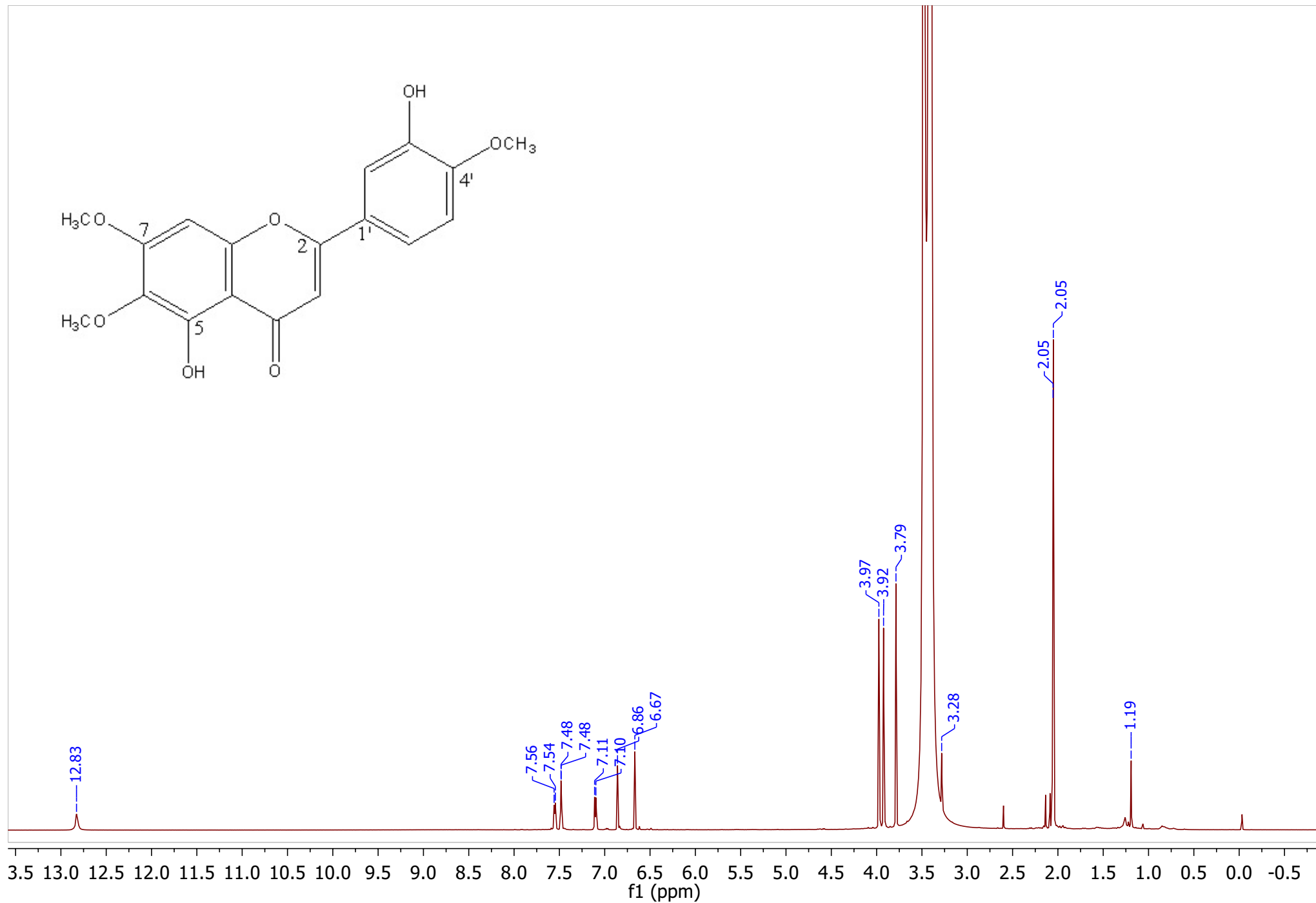


Figure S13. ¹H NMR (CD₃COCD₃, 600 MHz) of eupatorin (**3**)

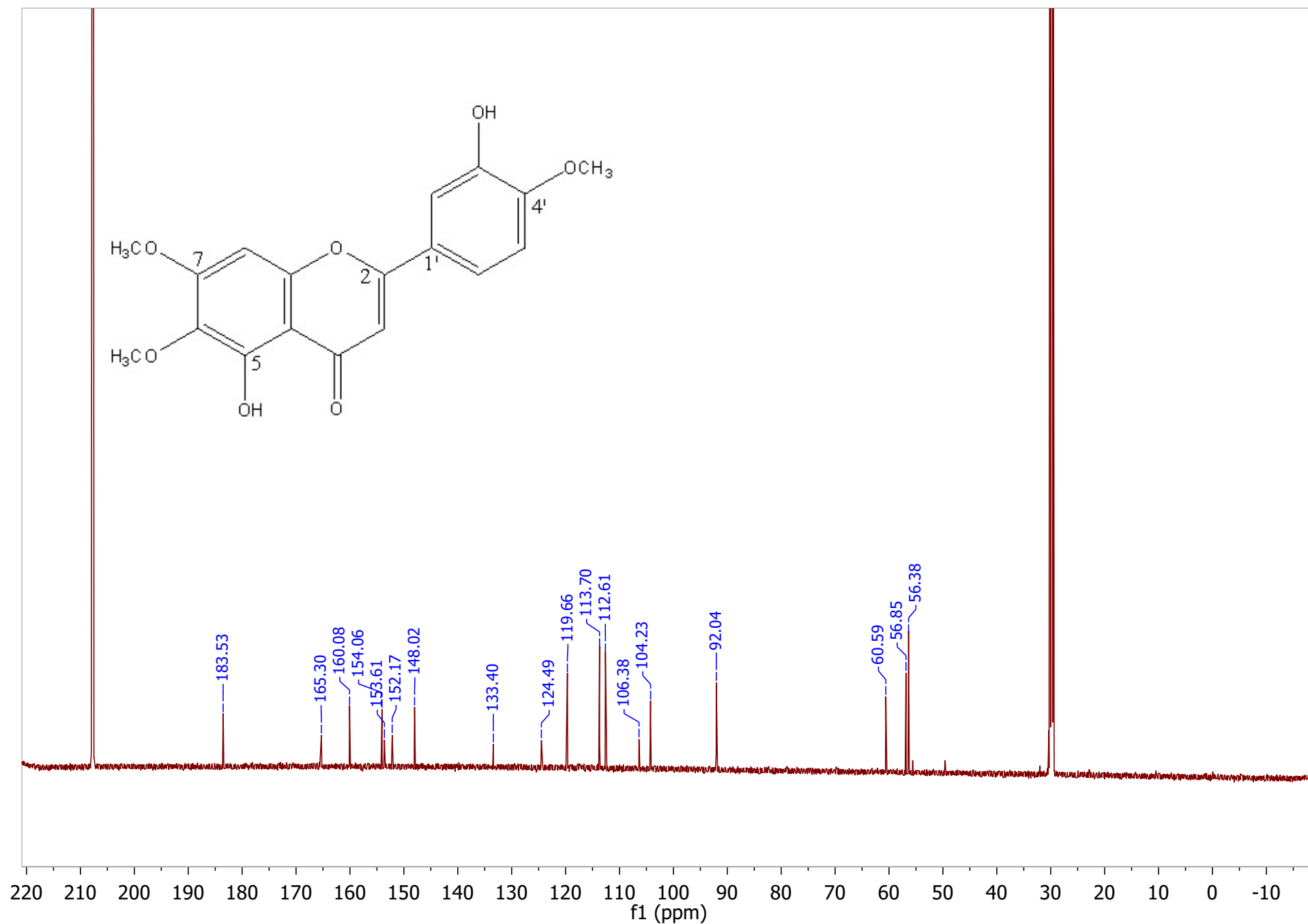


Figure S14. ^{13}C NMR (CD_3COCD_3 , 150 MHz) of eupatorin (**3**)

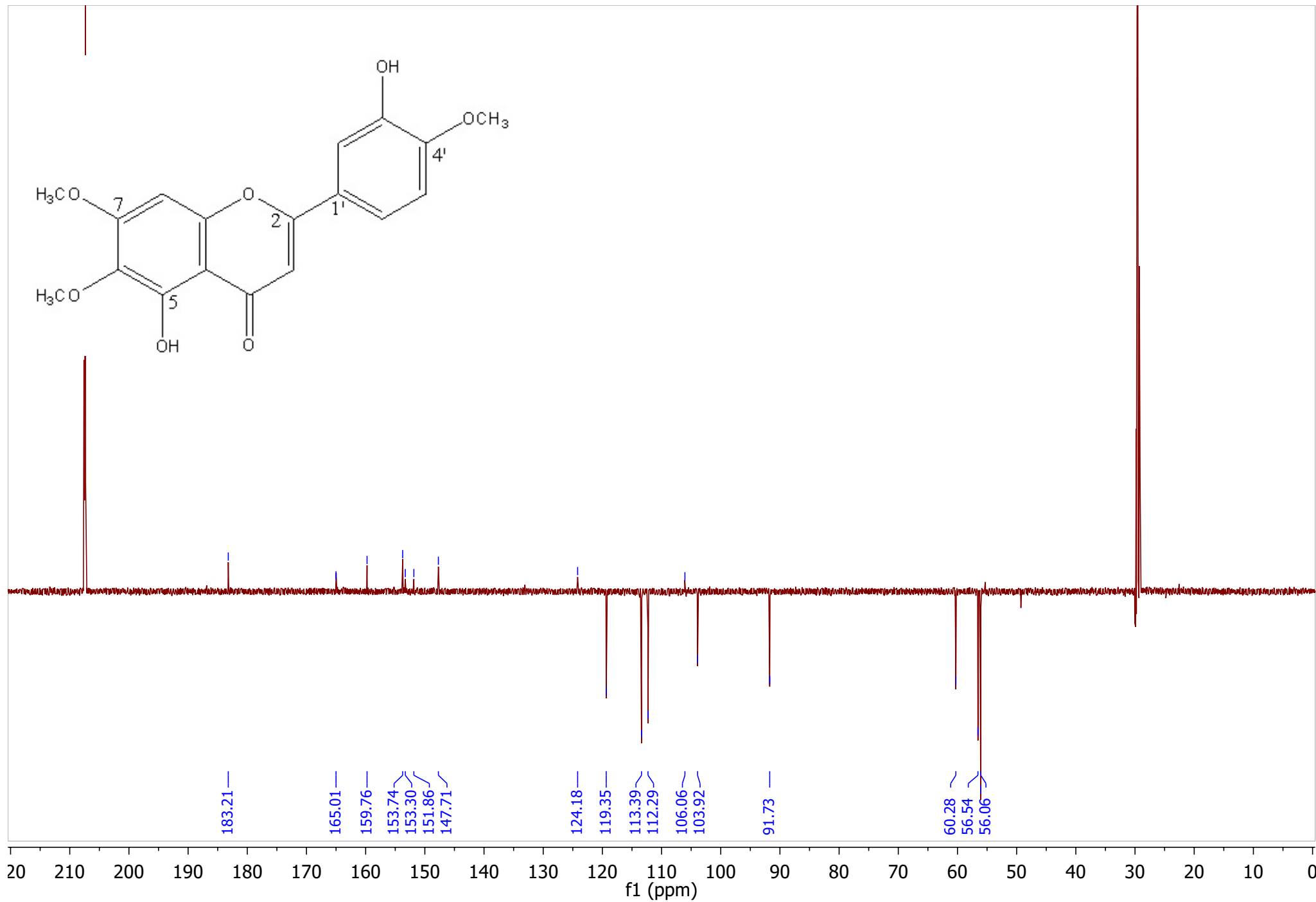


Figure S15. ^{13}C (DEPT) NMR (CD_3COCD_3 , 150 MHz) of eupatorin (**3**)

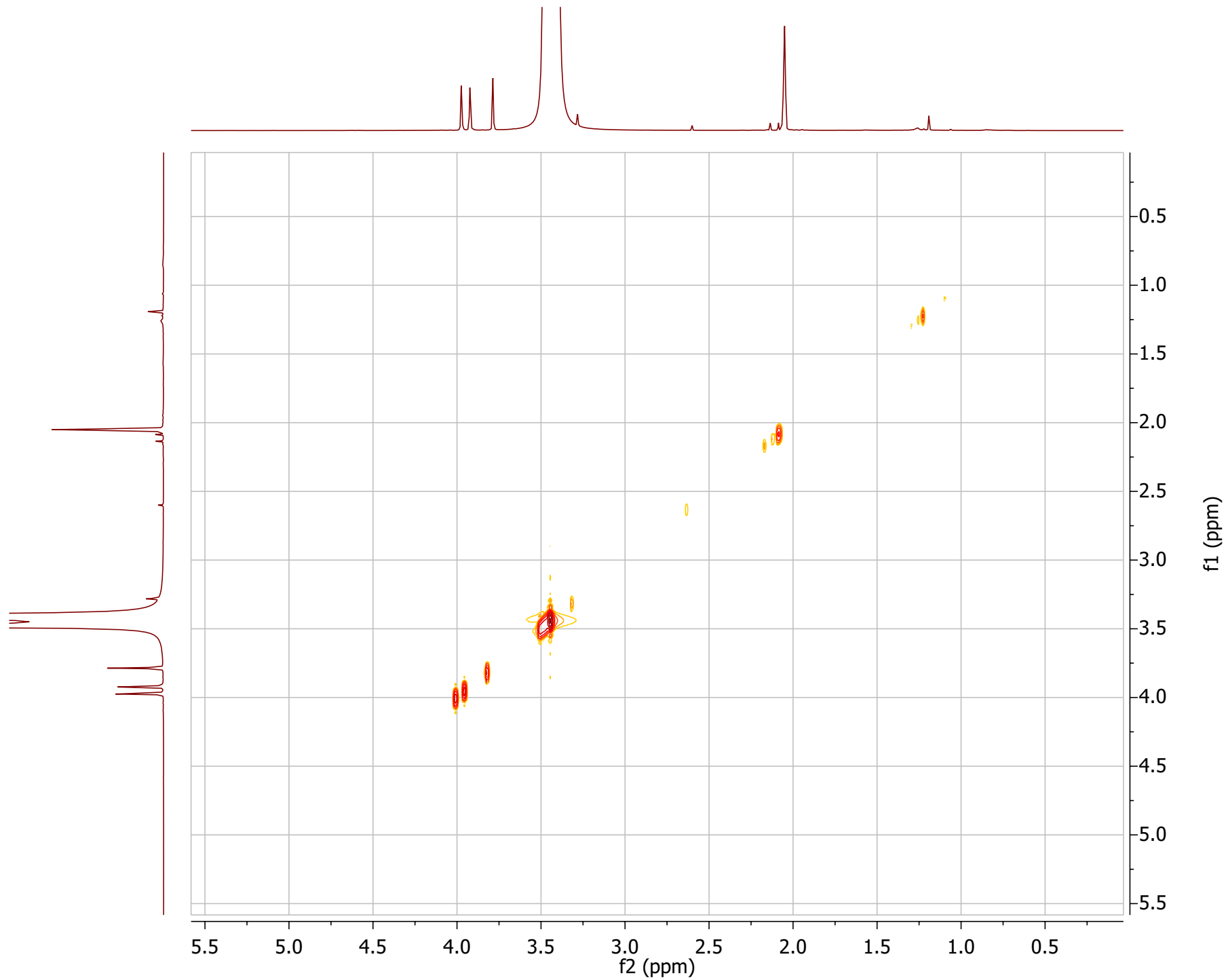


Figure S16. ^1H - ^1H COSY NMR (CD_3COCD_3 , 600 MHz) de eupatorin (**3**)

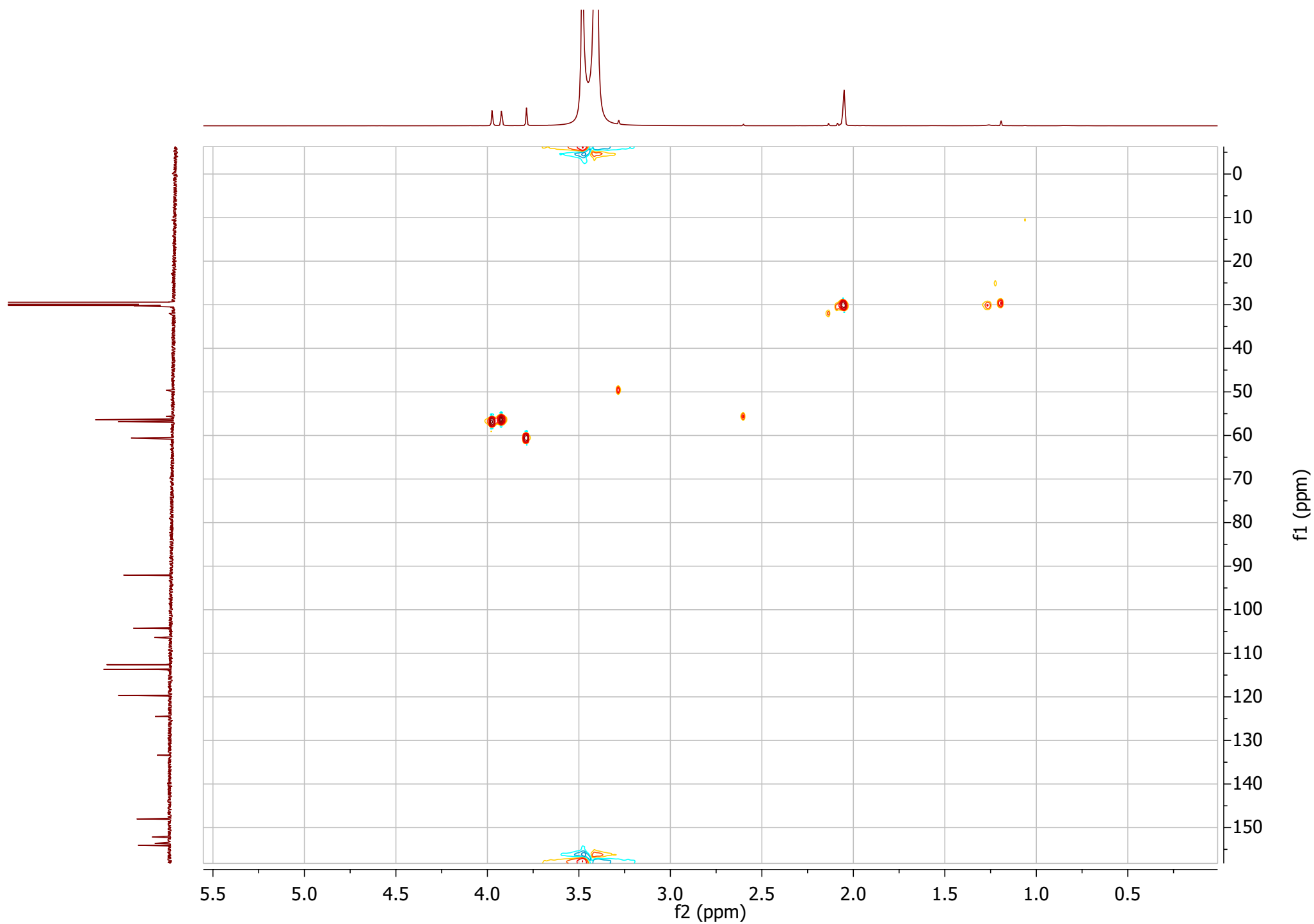


Figure S17. ^1H - ^{13}C (HSQC) NMR (CD_3COCD_3 , 600 MHz) de eupatorin (**3**)

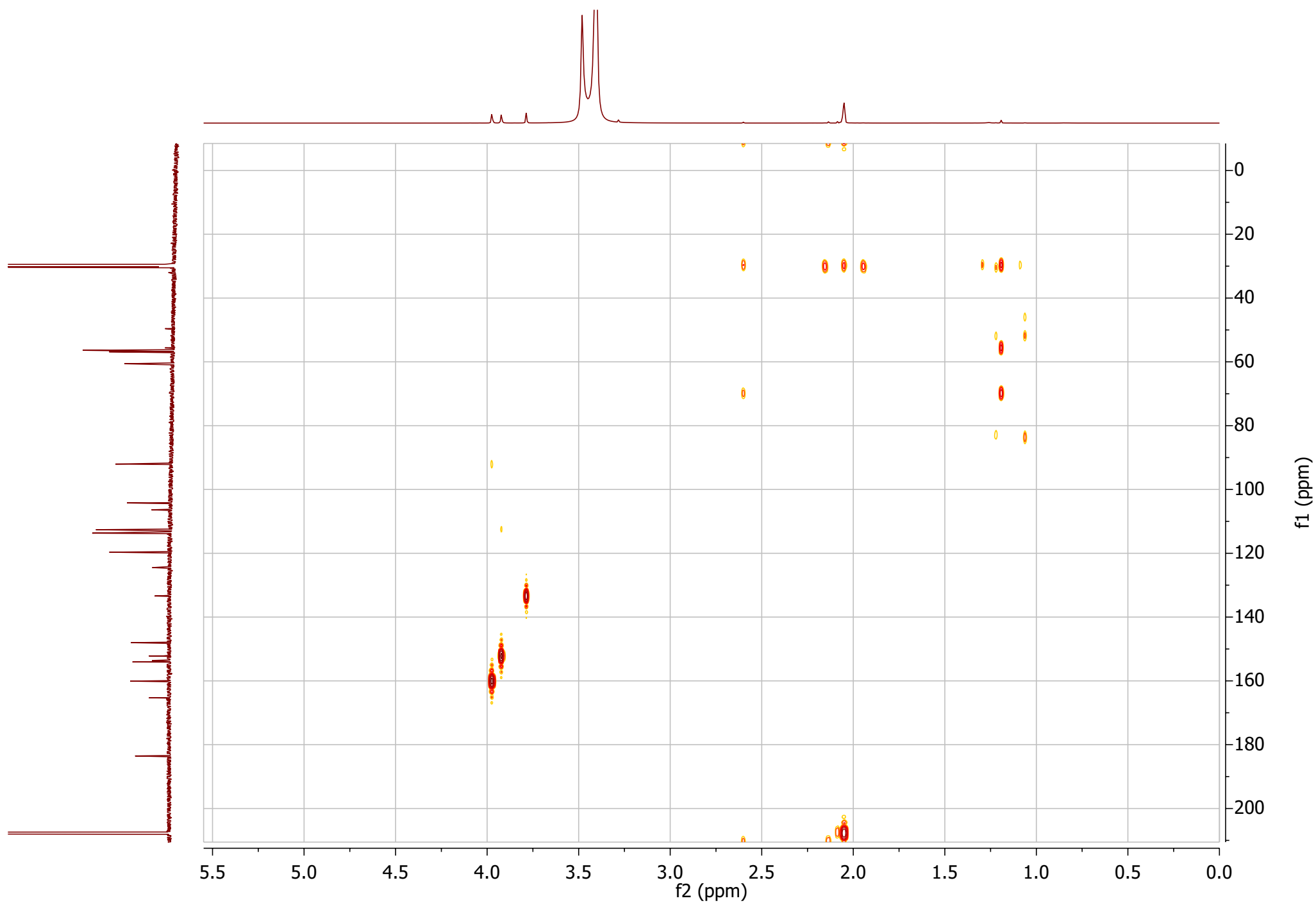


Figure S18. ^1H - ^{13}C (HMBC) NMR (CD_3COCD_3 , 600 MHz) de eupatorin (**3**)