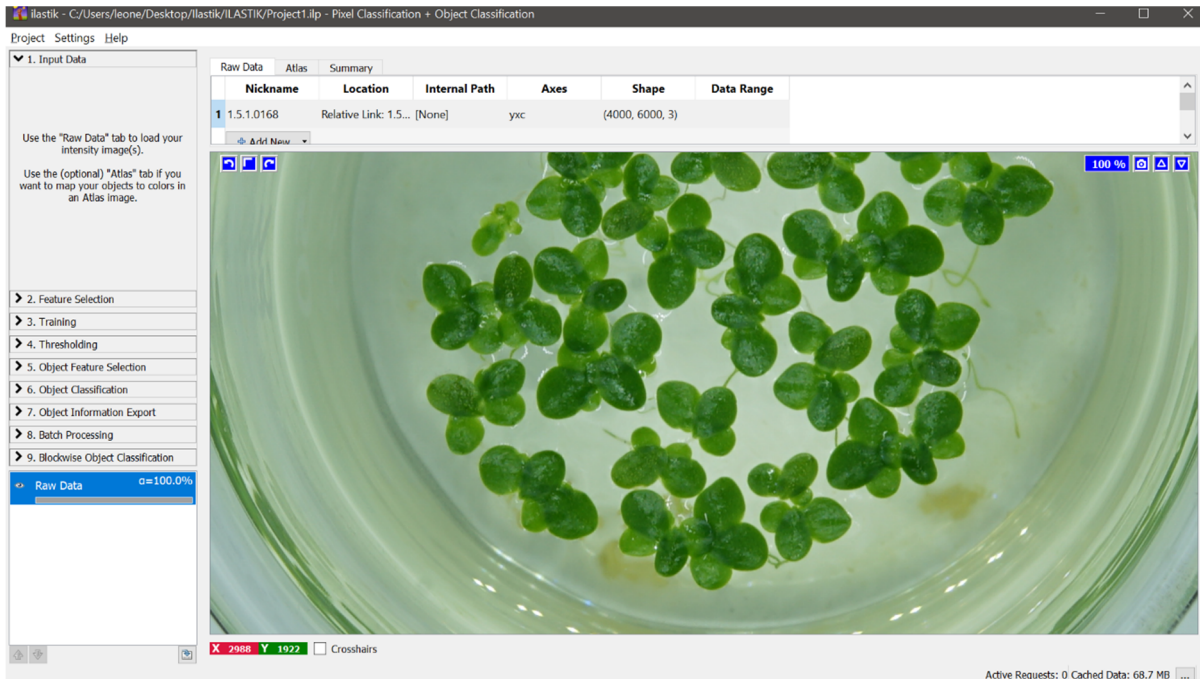
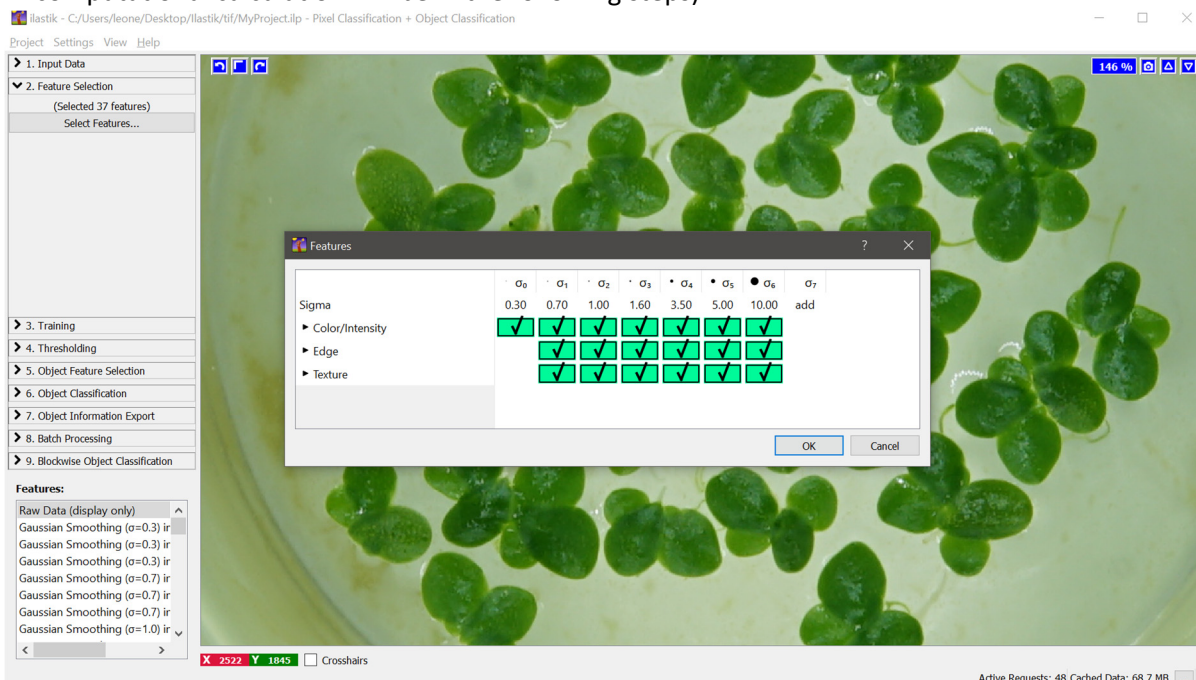


Protocol to analyze Lemanacae area with ilastik software. Futherinformation can be founfd on the official page of the ilastik software: <https://www.ilastik.org/documentation/objects/objects>

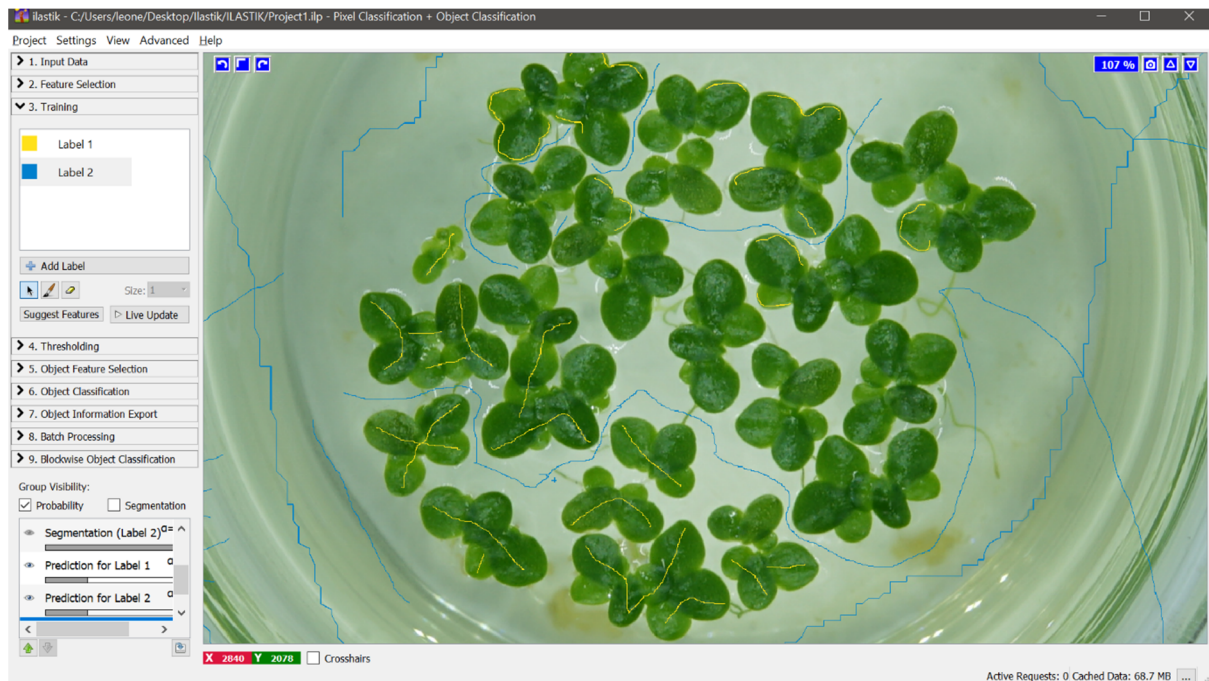
- 1) Transform images from Jpeg or other formats to TIFF
- 2) Open ilastik
- 3) Select : pixel classification + object classification
- 4) Input data (select the picture with the highest number of fronds)



- 5) Feature selection: select αx to αy (note that the higher the number of selected features, the heavier the computational calculation will be in the following steps)



6) Training, rename labels by double clicking.



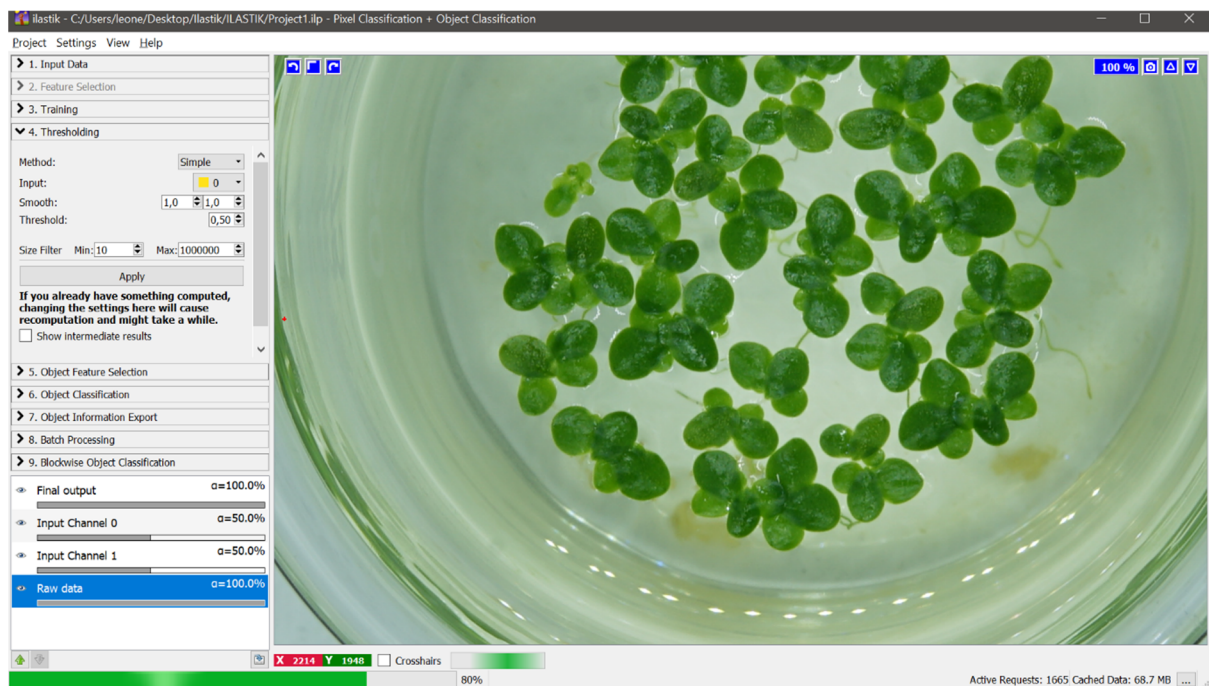
7) Suggest features

8) Feature selection (choose the most appropriate to the selected once)

9) Run feature selection

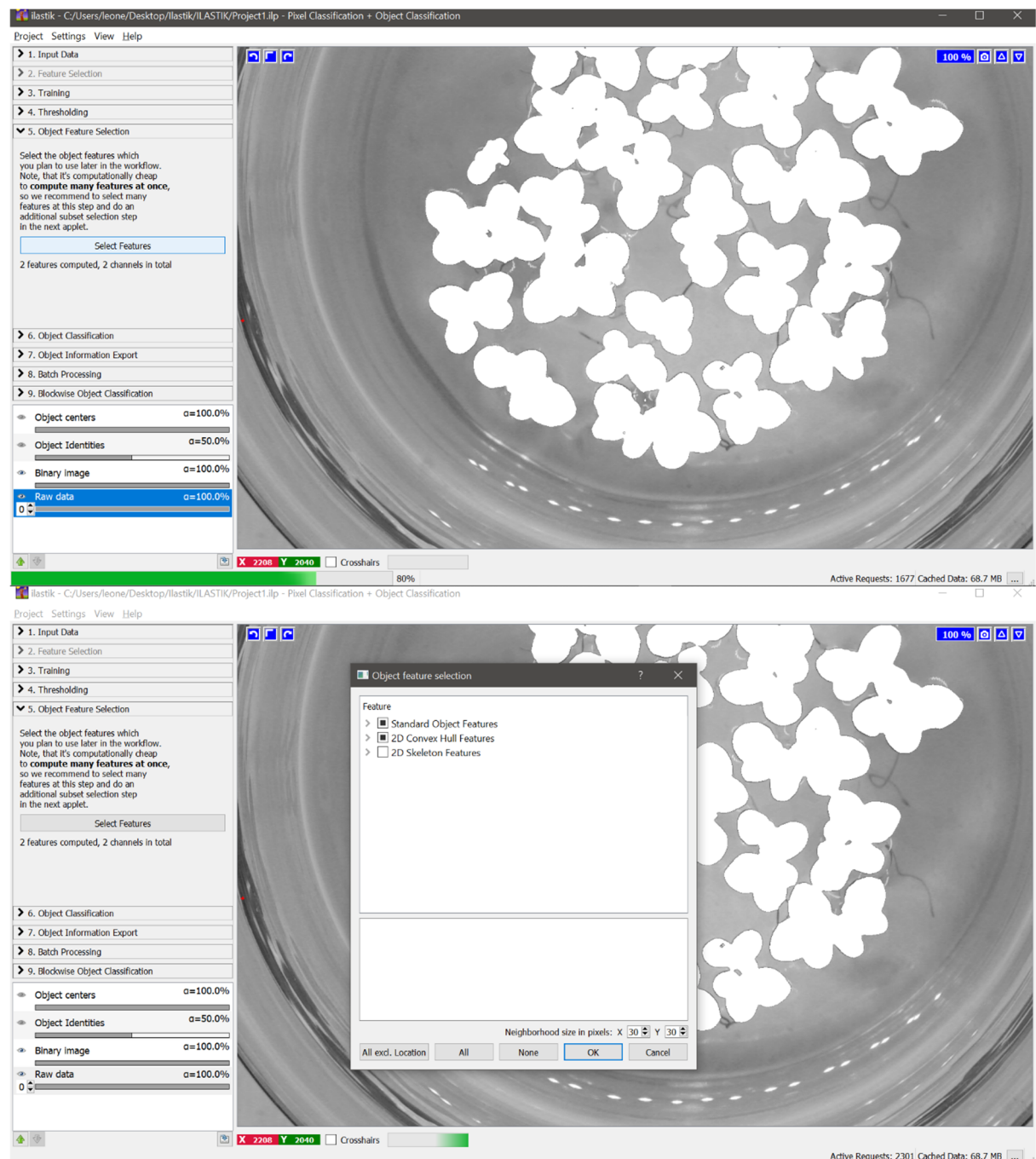
10) Select feature set

11) Apply Thresholding (standard)



12) Object feature selection:

- Select feature: Size in pixle

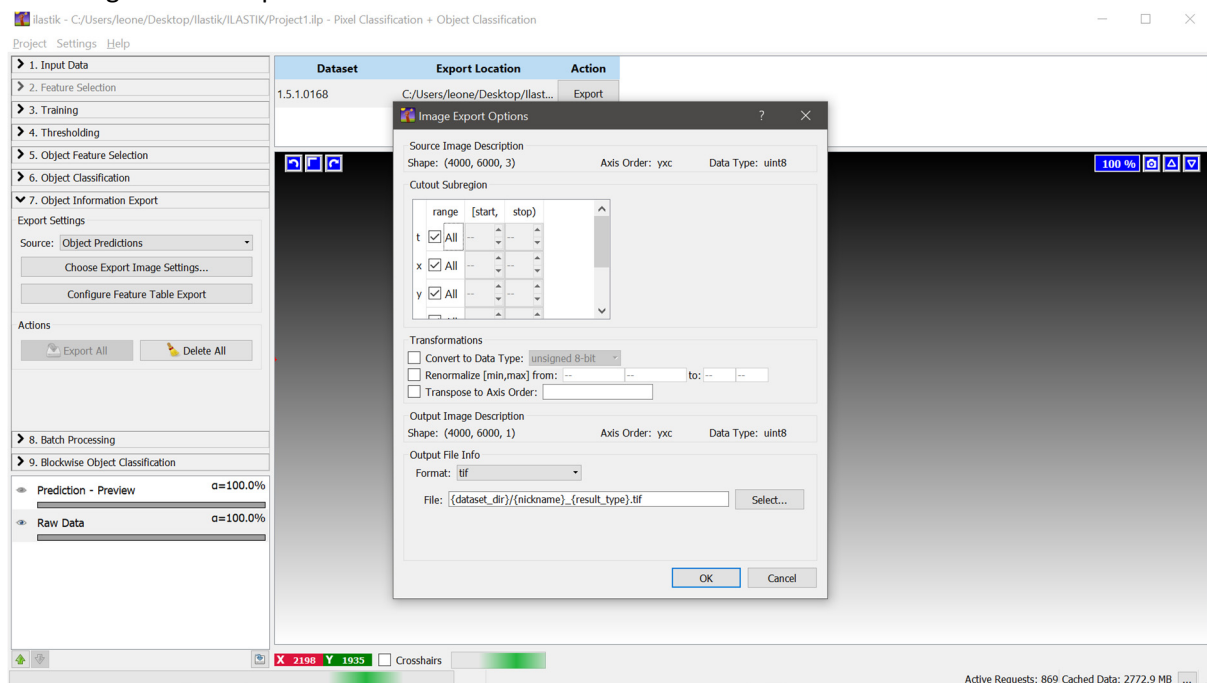


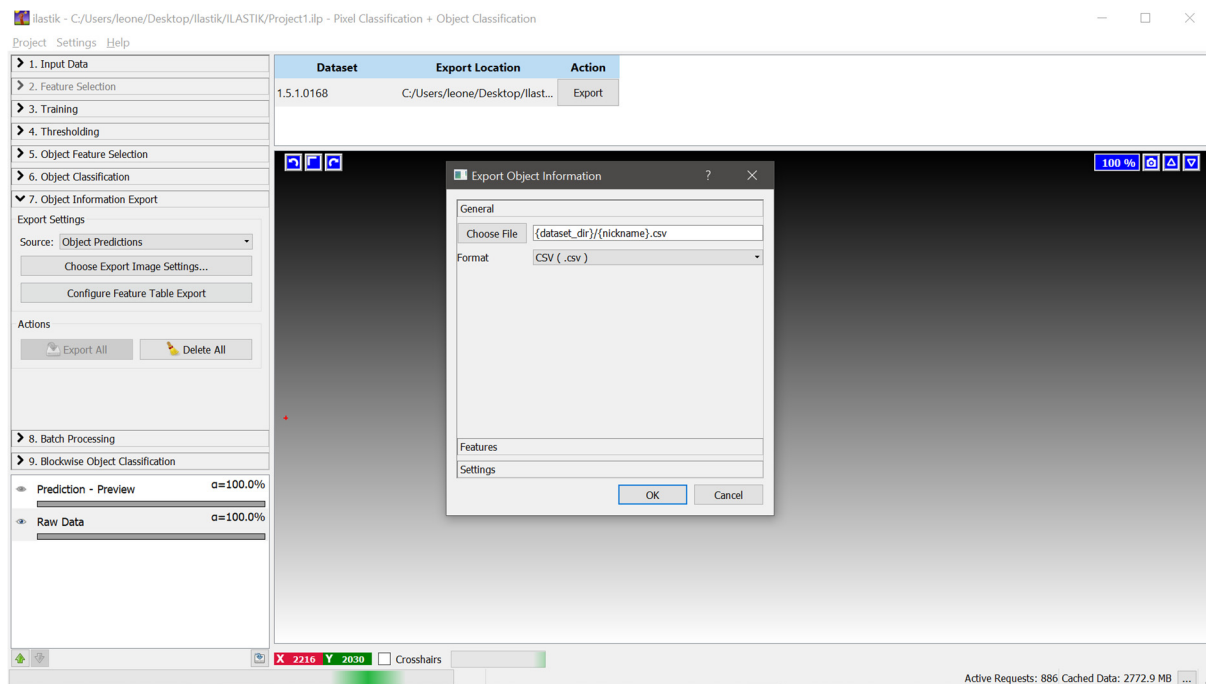
13) Object classification: add lable to the white selection



14) Object information export

- Source: object probabilities
- Choose export image setting: format .tif
- Configure table export: Format .csv





- 15) Batch processing
- 16) Process all files
- 17) Output

