

**Table S1.** Masses of obtained fractions from the purification of *Annona muricata*.

Sample Code	Mass of Fraction (g)	Mass of Fraction (mg)
1st Purification		
GE_crude	0.0028	2.8
GE_P1_B2_F17	0.0035	3.5
GE_P1_B2_F18	0.0043	4.3
GE_P1_B2_F19	0.0008	0.8
GE_P1_B2_F20	0.0016	1.6
GE_P1_B2_F21	0.0017	1.7
A	0.0002	0.2
B	0.0001	0.1
C	0.0001	0.1
D	1E-04	0.1
E	1E-04	0.1
F	0.0047	4.7
G	0.0006	0.6
H	0.0001	0.1
GE_P2_B3_F20_F16	0.0012	1.2
GE_P1_B3_F20	0.0009	0.9
F15 and F17 fractions		
GE_P3_B3_F17_12_A	0.0016	1.6
GE_P3_B3_F17_12_B	0.0005	0.5
GE_P3_B3_F17_12_C	0.0004	0.4
GE_P3_B3_F17_12_D	0.0005	0.5
GE_P3_B3_F17_12_E	0.0007	0.7
GE_P3_B3_F17_12_F	0.0011	1.1
GE_P3_B3_F17_12_G	0.0009	0.9
GE_P3_B3_F17_12_H	0.001	1
GE_P3_B3_F17_12_I	0.0003	0.3
GE_P2_B4_F17_F12	0.0018	1.8
GE_P1_B4_F17	0.0013	1.3
F15-F16 fractions		
GE_P1_B234_F15	0.0039	3.9
GE_P2_B234_F15_F9	0.0008	0.8
GE_P2_B234_F15_F10	0.0004	0.4
GE_P2_B234_F15_F11	0.0006	0.6
GE_P2_B234_F15_F12	0.0005	0.5

GE_P2_B234_F15_F13	0.0053	5.3
GE_P2_B234_F15_F14	0.0023	2.3
GE_P2_B234_F15_F15	0.0018	1.8
GE_P2_B234_F15_F16	0.0038	3.8
GE_P2_B234_F15_F17	0.0014	1.4
GE_P2_B234_F15_F18	0.0004	0.4
GE_P2_B234_F15_F19	0.0001	0.1

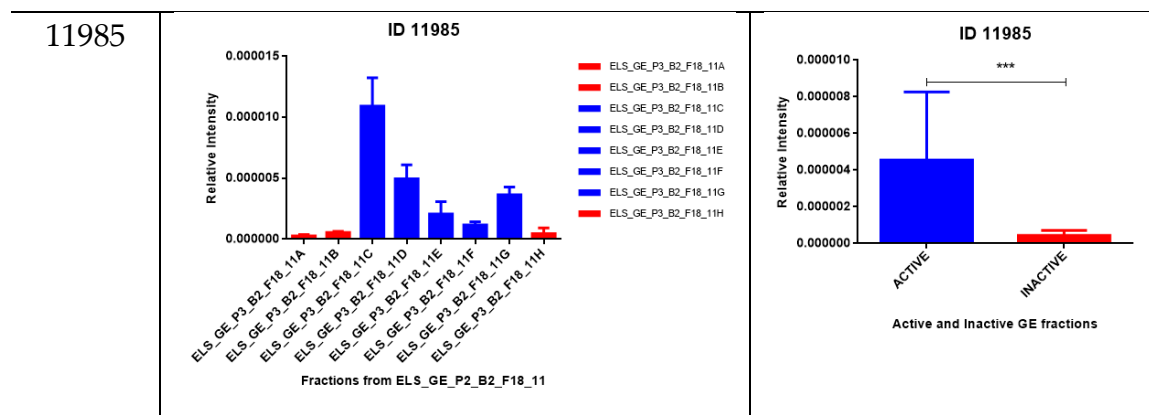
Align ment ID	Relative Intensity Per Fraction	Relative Intensity in Active and Inactive Fractions
13271	<p><b>ID 13271</b></p> <p>Fractions from ELS_GE_P2_B2_F18_11</p>	<p><b>ID 13271</b></p> <p>Active and Inactive GE fractions</p>
12388	<p><b>ID 12388</b></p> <p>Fractions from ELS_GE_P2_B2_F18_11</p>	<p><b>ID 12388</b></p> <p>Active and Inactive GE fractions</p>
12357	<p><b>ID 12357</b></p> <p>Fractions from ELS_GE_P2_B2_F18_11</p>	<p><b>ID 12357</b></p> <p>Active and Inactive GE fractions</p>
12376	<p><b>ID 12376</b></p> <p>Fractions from ELS_GE_P2_B2_F18_11</p>	<p><b>ID 12376</b></p> <p>Active and Inactive GE fractions</p>

Align ment ID	Relative Intensity Per Fraction	Relative Intensity in Active and Inactive Fractions
3078	<p><b>ID 3078</b></p> <p>Relative Intensity</p> <p>Fractions from ELS_GE_P2_B2_F18_11</p> <p>ELS_GE_P3_B2_F18_11A ELS_GE_P3_B2_F18_11B ELS_GE_P3_B2_F18_11C ELS_GE_P3_B2_F18_11D ELS_GE_P3_B2_F18_11E ELS_GE_P3_B2_F18_11F ELS_GE_P3_B2_F18_11G ELS_GE_P3_B2_F18_11H ELS_GE_P3_B2_F18_11I ELS_GE_P3_B2_F18_11J ELS_GE_P3_B2_F18_11K ELS_GE_P3_B2_F18_11L</p>	<p><b>ID 3078</b></p> <p>Relative Intensity</p> <p>ACTIVE INACTIVE</p> <p>Active and Inactive GE fractions</p>
13297	<p><b>ID 13297</b></p> <p>Relative Intensity</p> <p>Fractions from ELS_GE_P2_B2_F18_11</p> <p>ELS_GE_P3_B2_F18_11A ELS_GE_P3_B2_F18_11B ELS_GE_P3_B2_F18_11C ELS_GE_P3_B2_F18_11D ELS_GE_P3_B2_F18_11E ELS_GE_P3_B2_F18_11F ELS_GE_P3_B2_F18_11G ELS_GE_P3_B2_F18_11H ELS_GE_P3_B2_F18_11I ELS_GE_P3_B2_F18_11J ELS_GE_P3_B2_F18_11K</p>	<p><b>ID 13297</b></p> <p>Relative Intensity</p> <p>ACTIVE INACTIVE</p> <p>Active and Inactive GE fractions</p>
12369	<p><b>ID 12369</b></p> <p>Relative Intensity</p> <p>Fractions from ELS_GE_P2_B2_F18_11</p> <p>ELS_GE_P3_B2_F18_11A ELS_GE_P3_B2_F18_11B ELS_GE_P3_B2_F18_11C ELS_GE_P3_B2_F18_11D ELS_GE_P3_B2_F18_11E ELS_GE_P3_B2_F18_11F ELS_GE_P3_B2_F18_11G ELS_GE_P3_B2_F18_11H ELS_GE_P3_B2_F18_11I ELS_GE_P3_B2_F18_11J</p>	<p><b>ID 12369</b></p> <p>Relative Intensity</p> <p>ACTIVE INACTIVE</p> <p>Active and Inactive GE fractions</p>

11145	<p><b>ID 11145</b></p> <p>Fractions from ELS_GE_P2_B2_F18_11</p>	<p><b>ID 11145</b></p> <p>Active and Inactive GE fractions</p>
Alignm ent ID	Relative Intensity Per Fraction	Relative Intensity in Active and Inactive Fractions
12433	<p><b>ID 12433</b></p> <p>Fractions from ELS_GE_P2_B2_F18_11</p>	<p><b>ID 12433</b></p> <p>Active and Inactive GE fractions</p>
12422	<p><b>ID 12422</b></p> <p>Fractions from ELS_GE_P2_B2_F18_11</p>	<p><b>ID 12422</b></p> <p>Active and Inactive GE fractions</p>
11920	<p><b>ID 11920</b></p> <p>Fractions from ELS_GE_P2_B2_F18_11</p>	<p><b>ID 11920</b></p> <p>Active and Inactive GE fractions</p>

11996	<p><b>ID 11996</b></p> <p>Fractions from ELS_GE_P2_B2_F18_11</p>	<p><b>ID 11996</b></p> <p>Active and Inactive GE fractions</p>
Align ment ID	Relative Intensity Per Fraction	Relative Intensity in Active and Inactive Fractions
11931	<p><b>ID 11931</b></p> <p>Fractions from ELS_GE_P2_B2_F18_11</p>	<p><b>ID 11931</b></p> <p>Active and Inactive GE fractions</p>
12363	<p><b>ID 12363</b></p> <p>Fractions from ELS_GE_P2_B2_F18_11</p>	<p><b>ID 12363</b></p> <p>Active and Inactive GE fractions</p>
13254	<p><b>ID 13254</b></p> <p>Fractions from ELS_GE_P2_B2_F18_11</p>	<p><b>ID 13254</b></p> <p>Active and Inactive GE fractions</p>

10417	<p><b>ID 10417</b></p> <p>Relative Intensity</p> <p>Fractions from ELS_GE_P2_B2_F18_11</p> <p>ELS_GE_P3_B2_F18_11A ELS_GE_P3_B2_F18_11B ELS_GE_P3_B2_F18_11C ELS_GE_P3_B2_F18_11D ELS_GE_P3_B2_F18_11E ELS_GE_P3_B2_F18_11F ELS_GE_P3_B2_F18_11G ELS_GE_P3_B2_F18_11H</p>	<p><b>ID 10417</b></p> <p>Relative Intensity</p> <p>ACTIVE INACTIVE</p> <p>Active and Inactive GE fractions</p>
Align- ment ID	Relative Intensity Per Fraction	Relative Intensity in Active and Inactive Fractions
13144	<p><b>ID 13144</b></p> <p>Relative Intensity</p> <p>Fractions from ELS_GE_P2_B2_F18_11</p> <p>ELS_GE_P3_B2_F18_11A ELS_GE_P3_B2_F18_11B ELS_GE_P3_B2_F18_11C ELS_GE_P3_B2_F18_11D ELS_GE_P3_B2_F18_11E ELS_GE_P3_B2_F18_11F ELS_GE_P3_B2_F18_11G ELS_GE_P3_B2_F18_11H</p>	<p><b>ID 13144</b></p> <p>Relative Intensity</p> <p>ACTIVE INACTIVE</p> <p>Active and Inactive GE fractions</p>
11923	<p><b>ID 11923</b></p> <p>Relative Intensity</p> <p>Fractions from ELS_GE_P2_B2_F18_11</p> <p>ELS_GE_P3_B2_F18_11A ELS_GE_P3_B2_F18_11B ELS_GE_P3_B2_F18_11C ELS_GE_P3_B2_F18_11D ELS_GE_P3_B2_F18_11E ELS_GE_P3_B2_F18_11F ELS_GE_P3_B2_F18_11G ELS_GE_P3_B2_F18_11H</p>	<p><b>ID 11923</b></p> <p>Relative Intensity</p> <p>ACTIVE INACTIVE</p> <p>Active and Inactive GE fractions</p>
9844	<p><b>ID 9844</b></p> <p>Relative Intensity</p> <p>Fractions from ELS_GE_P2_B2_F18_11</p> <p>ELS_GE_P3_B2_F18_11A ELS_GE_P3_B2_F18_11B ELS_GE_P3_B2_F18_11C ELS_GE_P3_B2_F18_11D ELS_GE_P3_B2_F18_11E ELS_GE_P3_B2_F18_11F ELS_GE_P3_B2_F18_11G ELS_GE_P3_B2_F18_11H</p>	<p><b>ID 9844</b></p> <p>Relative Intensity</p> <p>ACTIVE INACTIVE</p> <p>Active and Inactive GE fractions</p>



**Figure S1.** Putative compounds in F15-16 and their relative intensities (from MetaboAnalyst analysis)

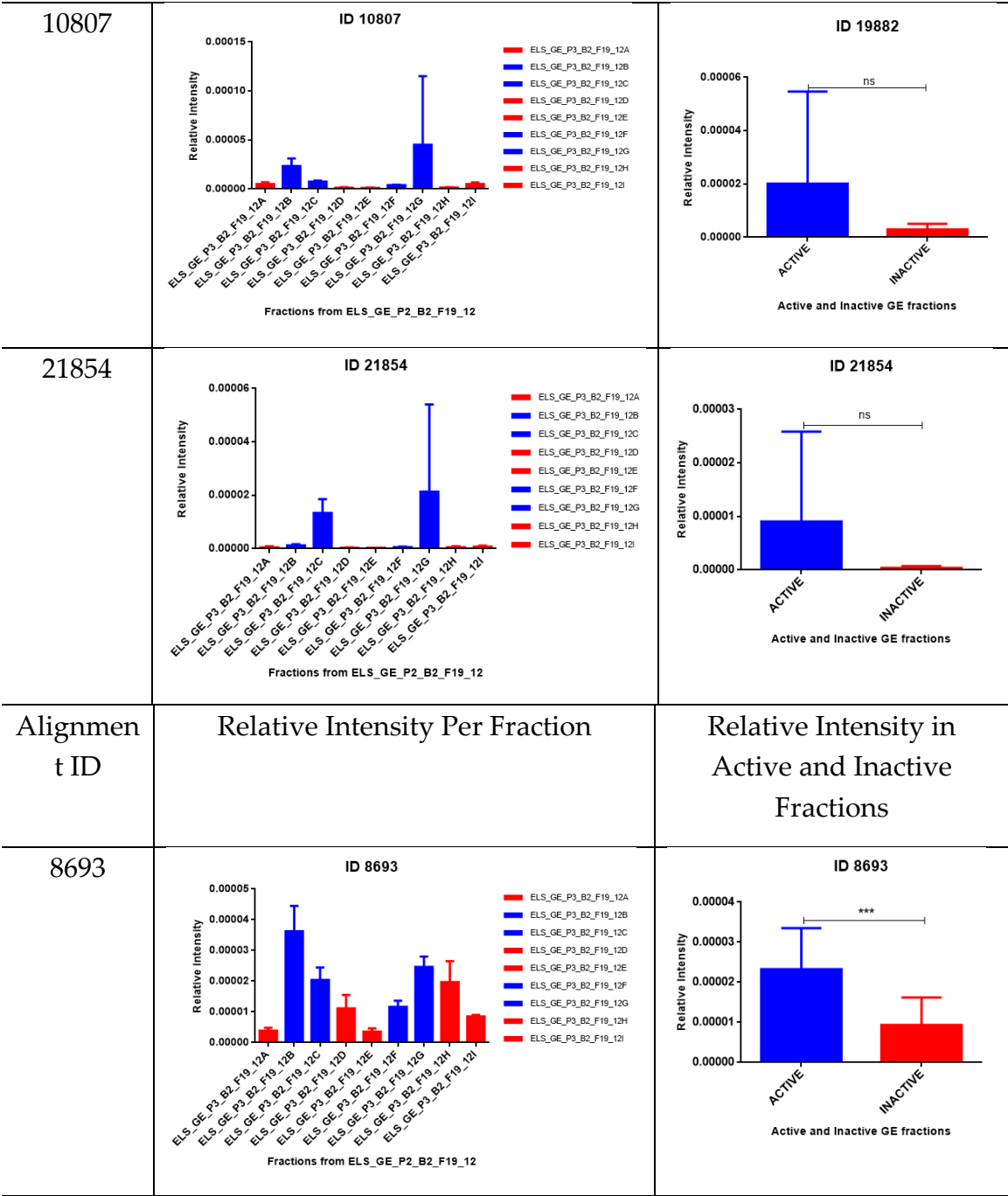


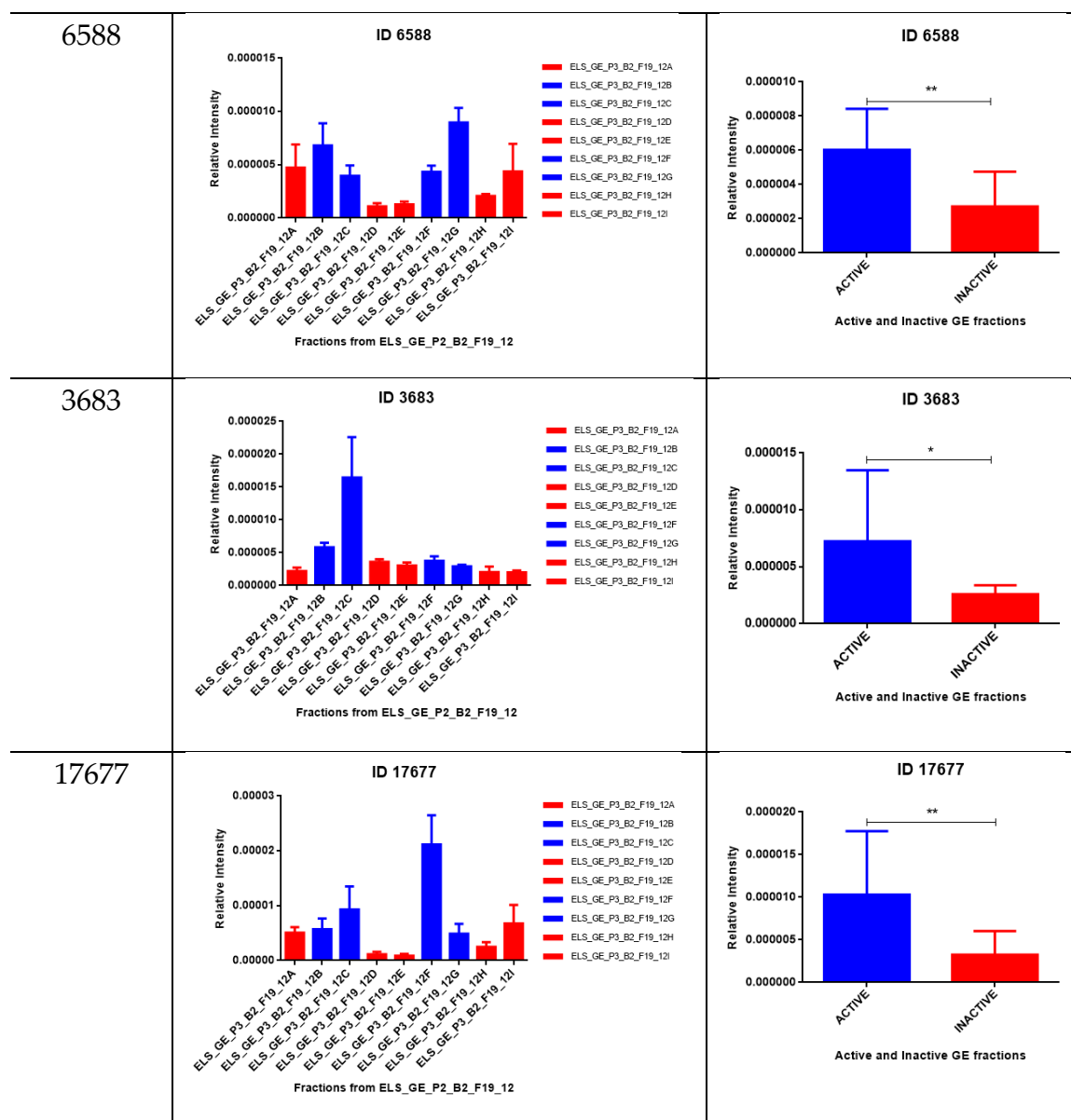
Alignment ID	Relative Intensity Per Fraction	Relative Intensity in Active and Inactive Fractions
15623	<p><b>ID 15623</b></p> <p>Fractions from ELS_GE_P2_B2_F19_12</p>	<p><b>ID 15623</b></p> <p>Active and Inactive GE fractions</p>
14263	<p><b>ID 14263</b></p> <p>Fractions from ELS_GE_P2_B2_F19_12</p>	<p><b>ID 14263</b></p> <p>Active and Inactive GE fractions</p>
3653	<p><b>ID 3653</b></p> <p>Fractions from ELS_GE_P2_B2_F19_12</p>	<p><b>ID 3653</b></p> <p>Active and Inactive GE fractions</p>

17871	<p><b>ID 17871</b></p> <p>Relative Intensity</p> <p>Fractions from ELS_GE_P2_B2_F19_12</p>	<p><b>ID 17871</b></p> <p>Relative Intensity</p> <p>ACTIVE INACTIVE</p> <p>Active and Inactive GE fractions</p>
Alignment ID	Relative Intensity Per Fraction	Relative Intensity in Active and Inactive Fractions
3618	<p><b>ID 3618</b></p> <p>Relative Intensity</p> <p>Fractions from ELS_GE_P2_B2_F19_12</p>	<p><b>ID 3618</b></p> <p>Relative Intensity</p> <p>ACTIVE INACTIVE</p> <p>Active and Inactive GE fractions</p>
14942	<p><b>ID 14942</b></p> <p>Relative Intensity</p> <p>Fractions from ELS_GE_P2_B2_F19_12</p>	<p><b>ID 14942</b></p> <p>Relative Intensity</p> <p>ACTIVE INACTIVE</p> <p>Active and Inactive GE fractions</p>

3722	<p><b>ID 3722</b></p> <p>Fractions from ELS_GE_P2_B2_F19_12</p>	<p><b>ID 3722</b></p> <p>Active and Inactive GE fractions</p>
1551	<p><b>ID 1551</b></p> <p>Fractions from ELS_GE_P2_B2_F19_12</p>	<p><b>ID 1551</b></p> <p>Active and Inactive GE fractions</p>
Alignment ID	Relative Intensity Per Fraction	Relative Intensity in Active and Inactive Fractions
19912	<p><b>ID 19912</b></p> <p>Fractions from ELS_GE_P2_B2_F19_12</p>	<p><b>ID 19912</b></p> <p>Active and Inactive GE fractions</p>
14387	<p><b>ID 14387</b></p> <p>Fractions from ELS_GE_P2_B2_F19_12</p>	<p><b>ID 14387</b></p> <p>Active and Inactive GE fractions</p>

14941	<p><b>ID 14941</b></p> <p>Fractions from ELS_GE_P2_B2_F19_12</p>	<p><b>ID 14941</b></p> <p>Active and inactive GE fractions</p>
17456	<p><b>ID 17456</b></p> <p>Fractions from ELS_GE_P2_B2_F19_12</p>	<p><b>ID 17456</b></p> <p>Active and inactive GE fractions</p>
Alignment ID	Relative Intensity Per Fraction	Relative Intensity in Active and Inactive Fractions
5453	<p><b>ID 5453</b></p> <p>Fractions from ELS_GE_P2_B2_F19_12</p>	<p><b>ID 5453</b></p> <p>Active and inactive GE fractions</p>
19882	<p><b>ID 19882</b></p> <p>Fractions from ELS_GE_P2_B2_F19_12</p>	<p><b>ID 19882</b></p> <p>Active and inactive GE fractions</p>





**Figure S2.** Putative compounds in F15-17 and their relative intensities (from MetaboAnalyst analysis).