

Phytochemical Screening and Isolation of New *Ent*-Clerodane Diterpenoids from *Croton guatemalensis* Lotsy

Sonia Marlen Escandón-Rivera ¹, Adolfo Andrade-Cetto ^{1,*}, Daniel Genaro Rosas-Ramírez ² and Roberto Arreguín-Espinosa ²

¹ Departamento de Biología Celular, Facultad de Ciencias, Universidad Nacional Autónoma de México, Av. Universidad 3000, Circuito Exterior S/N, Coyoacán, Ciudad Universitaria, Mexico City 04510, Mexico

² Departamento de Biomacromoléculas, Instituto de Química, Universidad Nacional Autónoma de México, Av. Universidad 3000, Circuito Exterior S/N, Coyoacán, Ciudad Universitaria, Mexico City 04510, Mexico

* Correspondence: aac@ciencias.unam.mx; Tel.: +52-5556225437

Table of contents

Figure S1. The ¹H NMR spectrum of **2** in CDCl₃ (500 MHz).

Figure S2. The ¹³C NMR spectrum of **2** in CDCl₃ (125 MHz).

Figure S3. The DEPT spectrum of **2** in CDCl₃ (125 MHz).

Figure S4. The HSQC spectrum of **2** in CDCl₃.

Figure S5. The ¹H-¹H COSY spectrum of **2** in CDCl₃.

Figure S6. The HMBC spectrum of **2** in CDCl₃.

Figure S7. The NOESY spectrum of **2** in CDCl₃.

Figure S8. The TOCSY spectrum of **2** in CDCl₃.

Figure S9. The ESIMS spectrum of compound **2**.

Figure S10. The UV spectrum of compound **2**.

Figure S11. The IR spectrum of compound **2**.

Figure S12. The ¹H NMR spectrum of **3** in CDCl₃ (500 MHz).

Figure S13. The ¹³C NMR spectrum of **3** in CDCl₃ (125 MHz).

Figure S14. The DEPT spectrum of **3** in CDCl₃ (125 MHz).

Figure S15. The HSQC spectrum of **3** in CDCl₃.

Figure S16. The ¹H-¹H COSY spectrum of **3** in CDCl₃.

Figure S17. The HMBC spectrum of **3** in CDCl₃.

Figure S18. The NOESY spectrum of **3** in CDCl₃.

Figure S19. The TOCSY spectrum of **3** in CDCl₃.

Figure S20. The HRESIMS spectrum of compound **3**.

Figure S21. The UV spectrum of compound **3**.

Figure S22. The IR spectrum of compound **3**.

Figure S23. Calibration curve of rutin (**6**).

Figure S24. HPLC-ESIMS spectrum obtained from the affinity screening analysis of the EWE soluble extract with *α*-glucosidase, positive mode.

Figure S25. HPLC-ESIMS spectrum obtained from the affinity screening analysis of the EWE soluble extract with *α*-glucosidase, negative mode.

Table S1. Standard calibration curve of rutin (**6**).

Figure S1. The ^1H NMR spectrum of **2** in CDCl_3 (500 MHz).

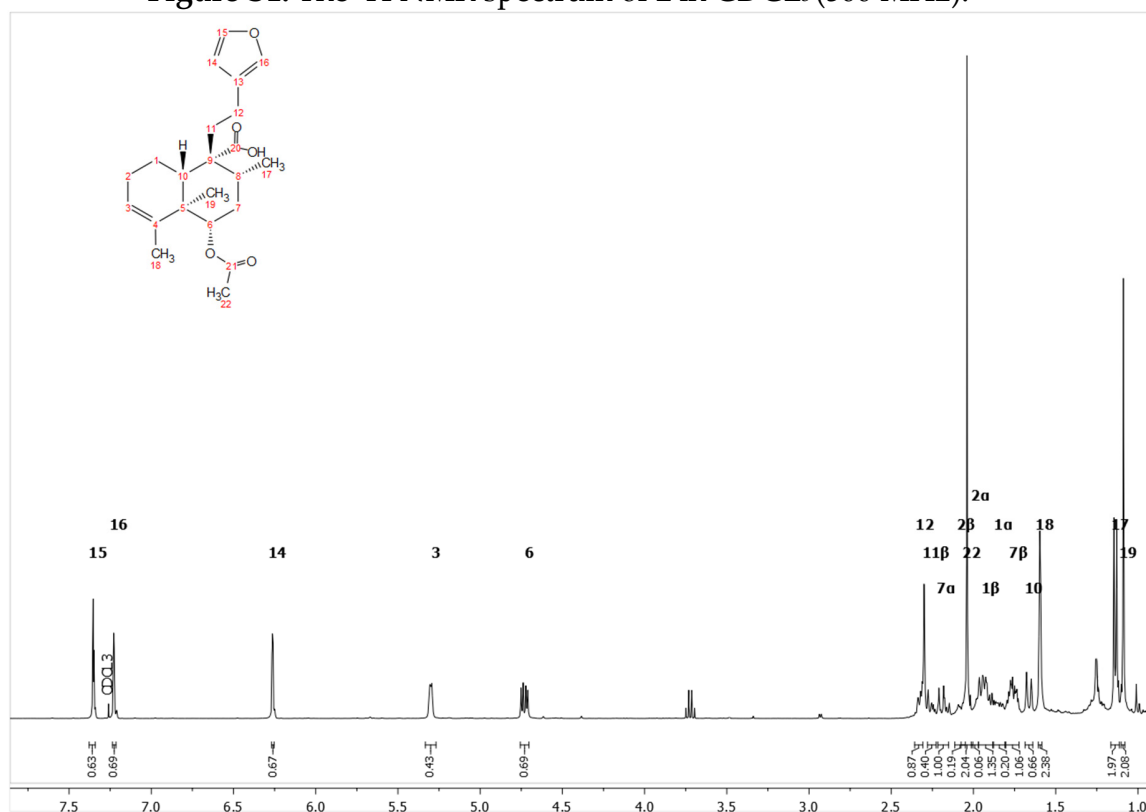


Figure S2. The ^{13}C NMR spectrum of **2** in CDCl_3 (125 MHz).

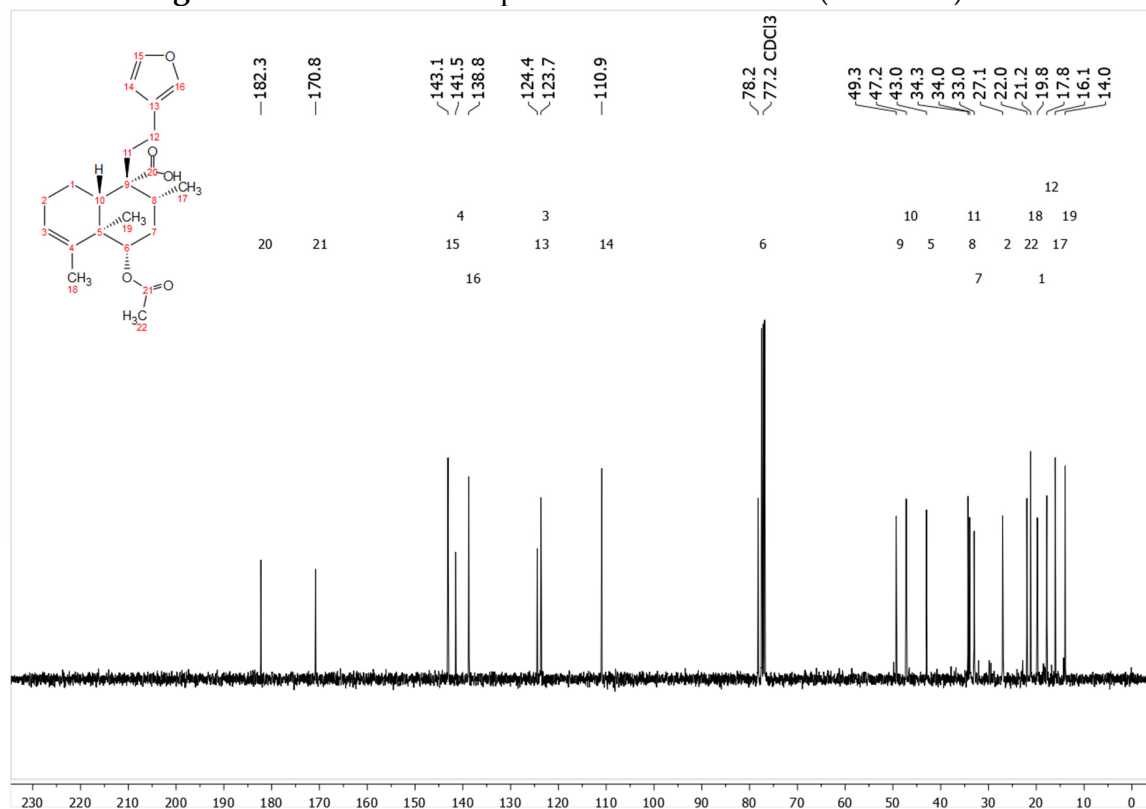


Figure S3. The DEPT spectrum of **2** in CDCL₃ (125 MHz).

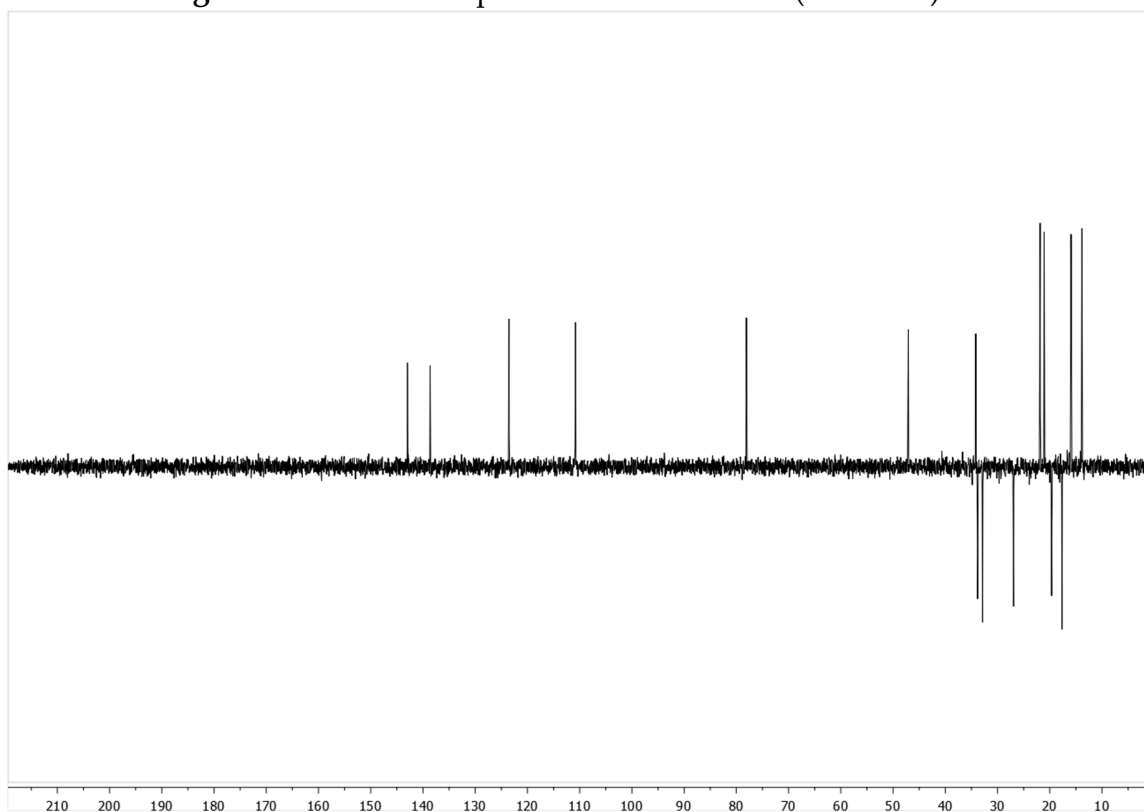


Figure S4. The HSQC spectrum of **2** in CDCL₃.

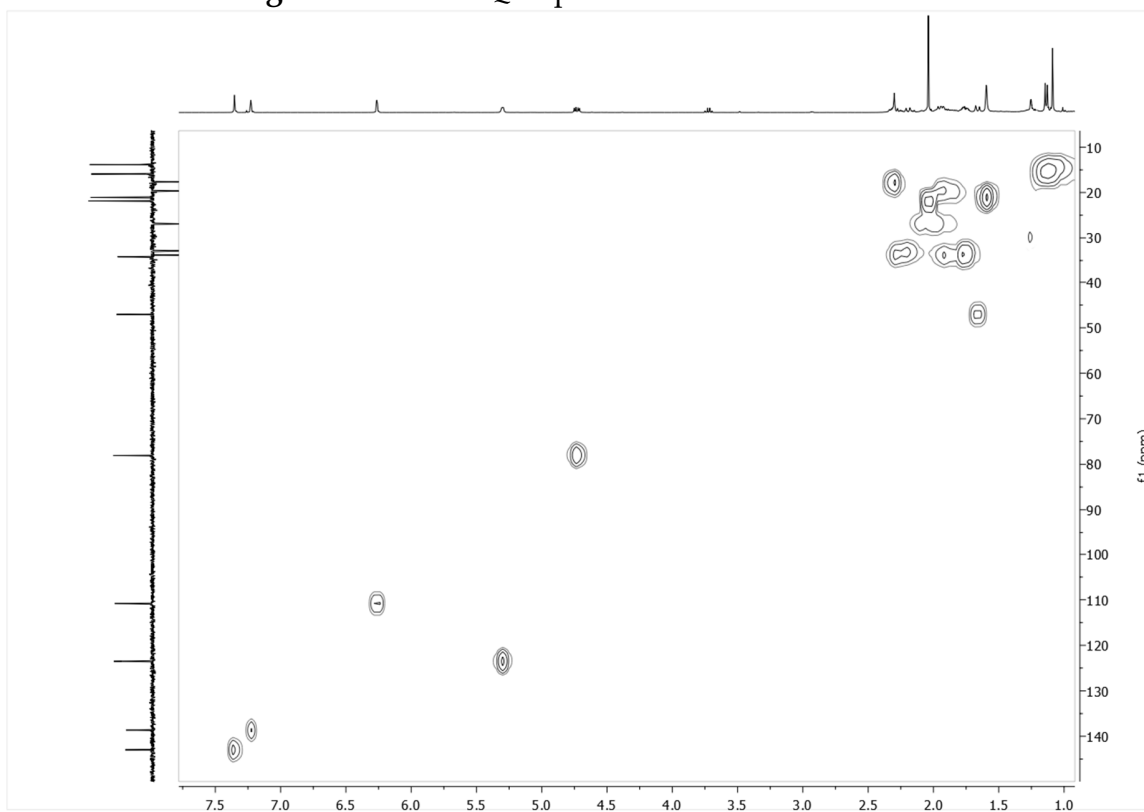


Figure S5. The ^1H - ^1H COSY spectrum of **2** in CDCl_3 .

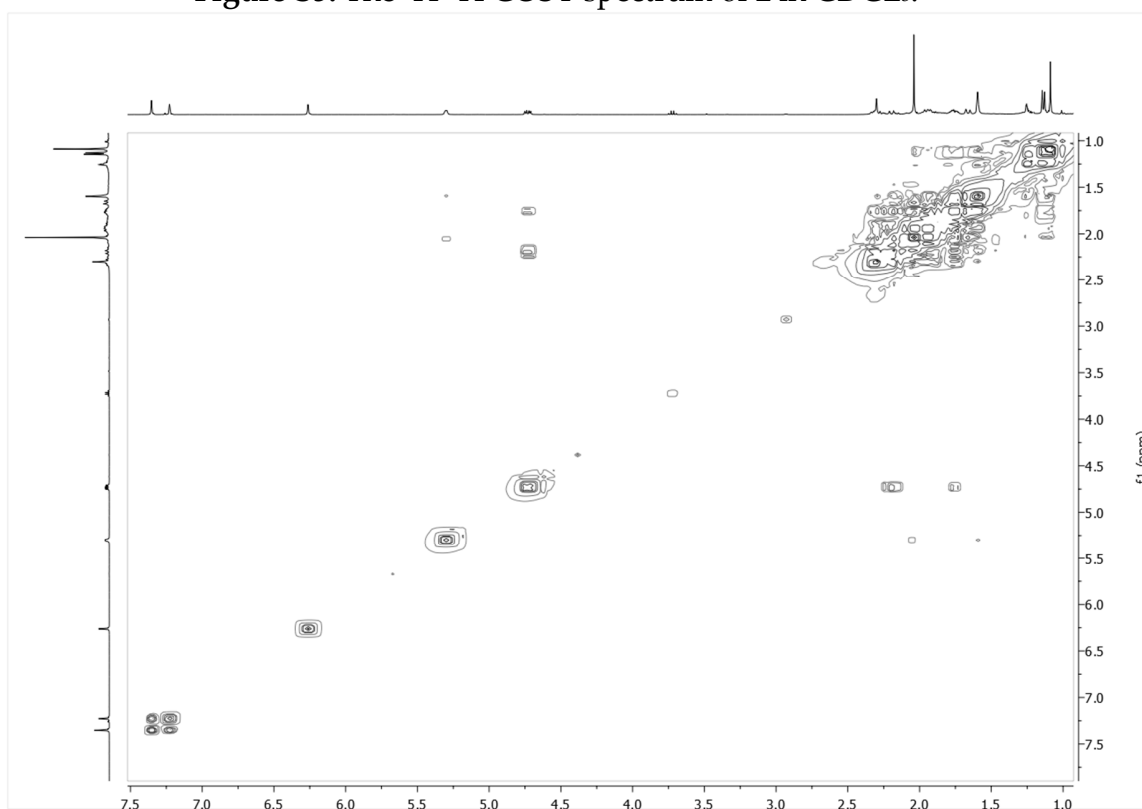


Figure S6. The HMBC spectrum of **2** in CDCl_3 .

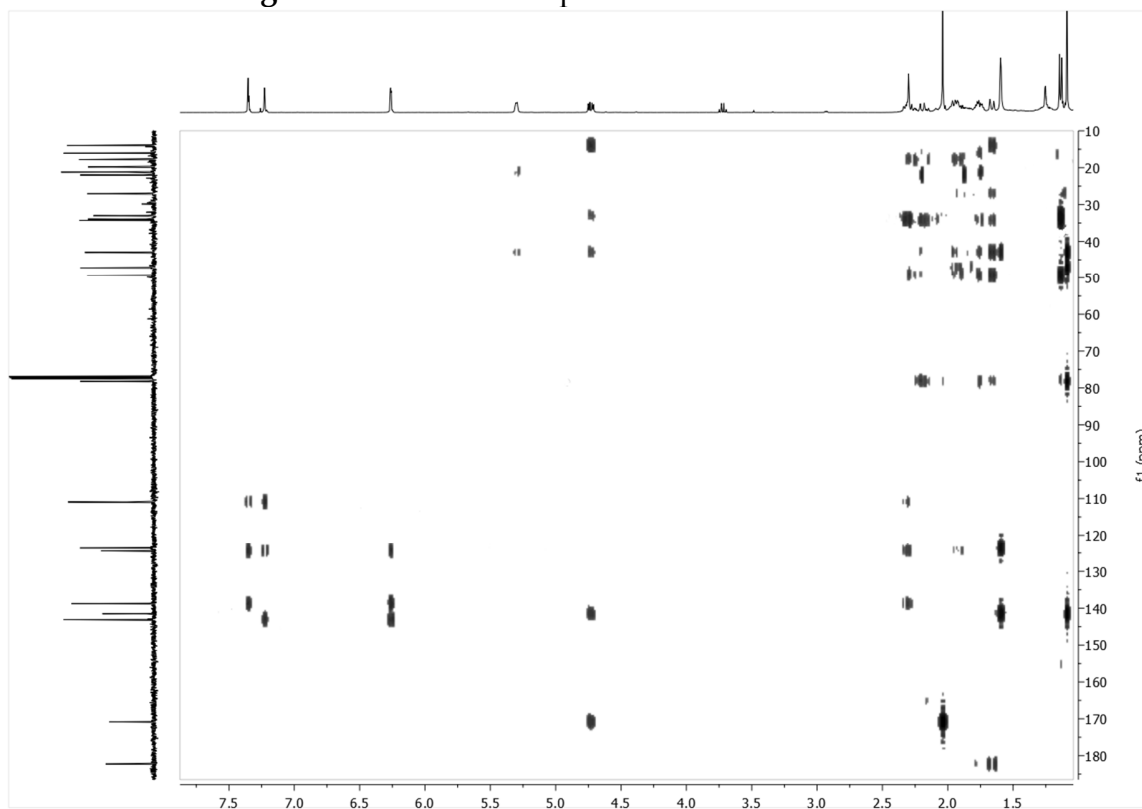


Figure S7. The NOESY spectrum of **2** in CDCl₃.

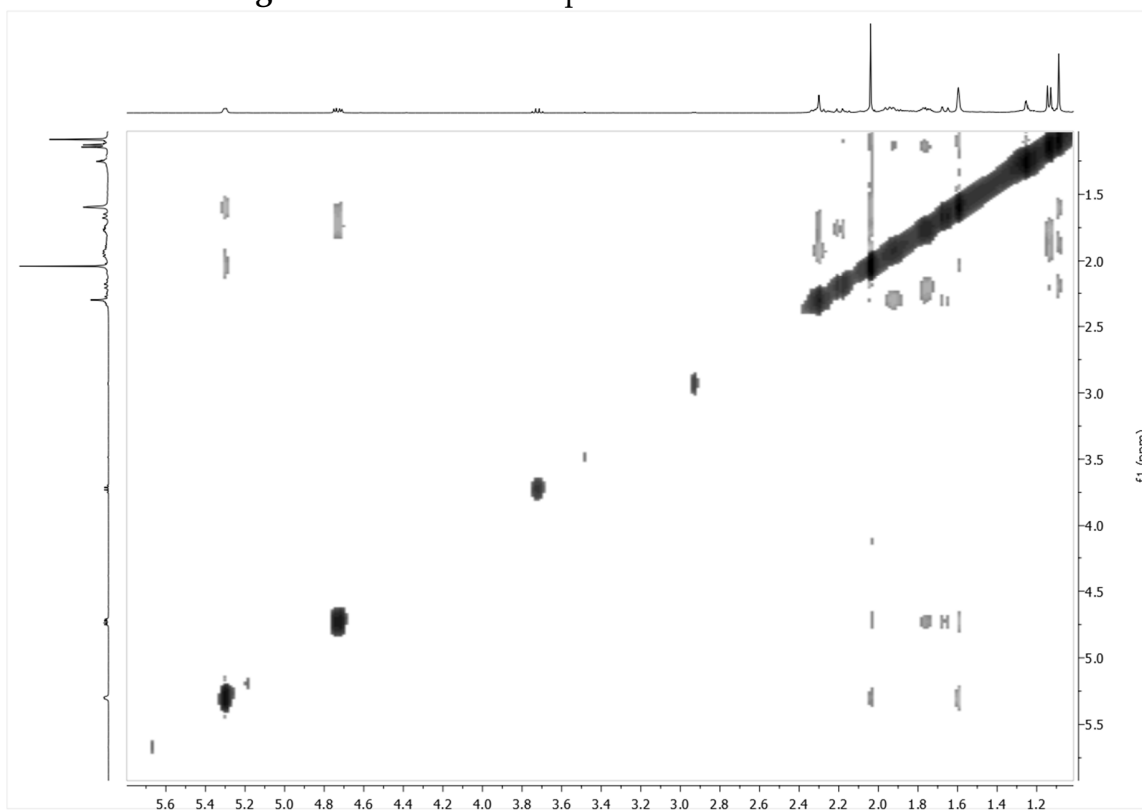


Figure S8. The TOCSY spectrum of **2** in CDCl₃.

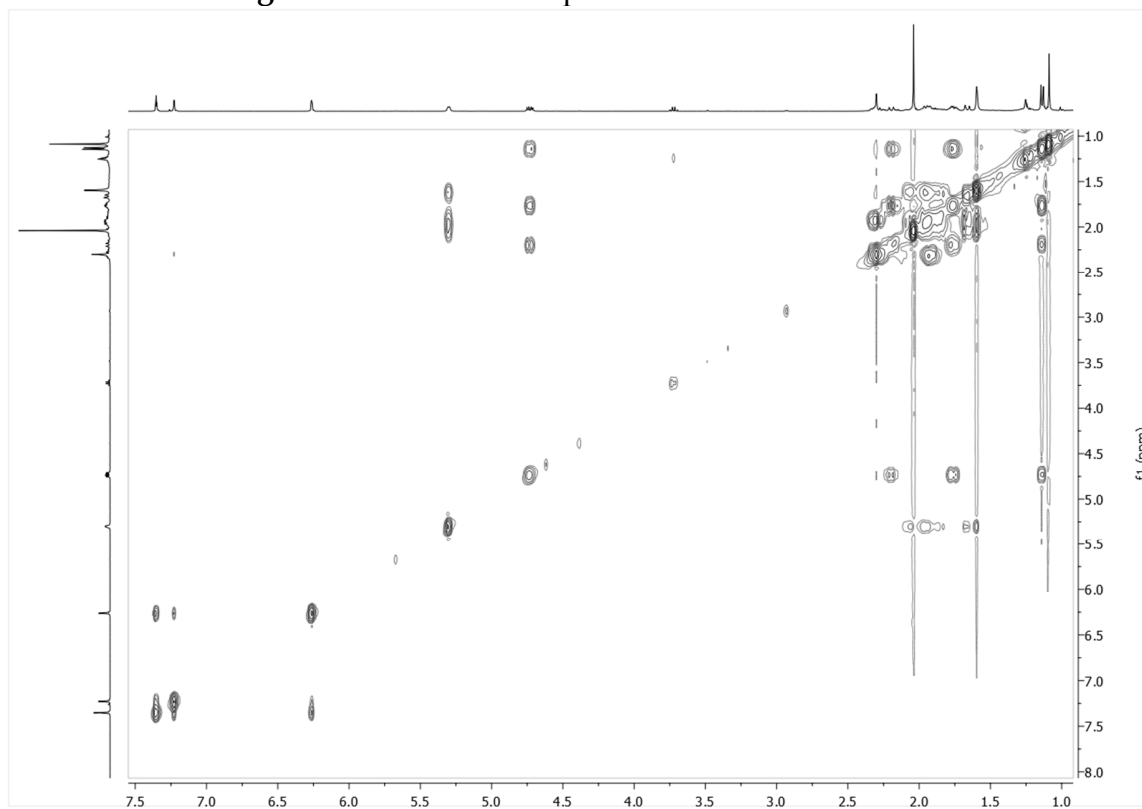


Figure S9. The HRESIMS spectrum of compound 2.

User Spectra

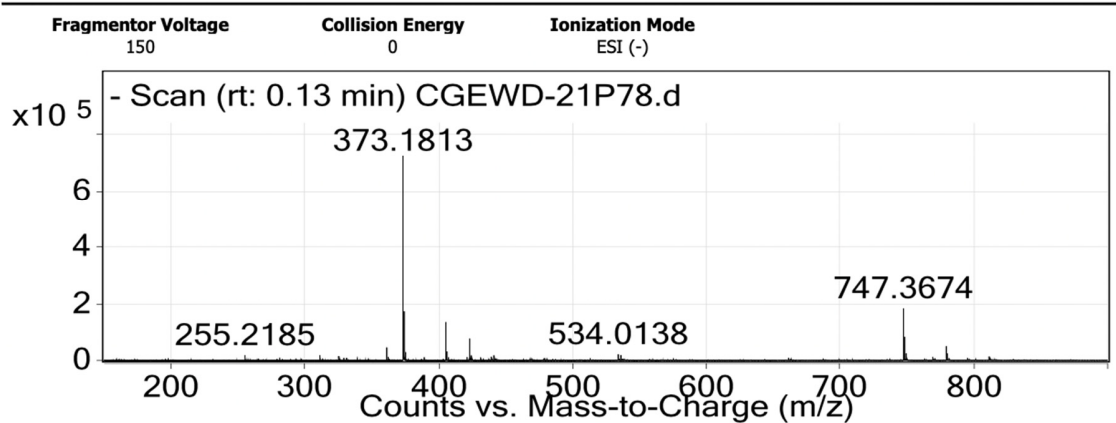


Figure S10. The UV spectrum of compound 2.

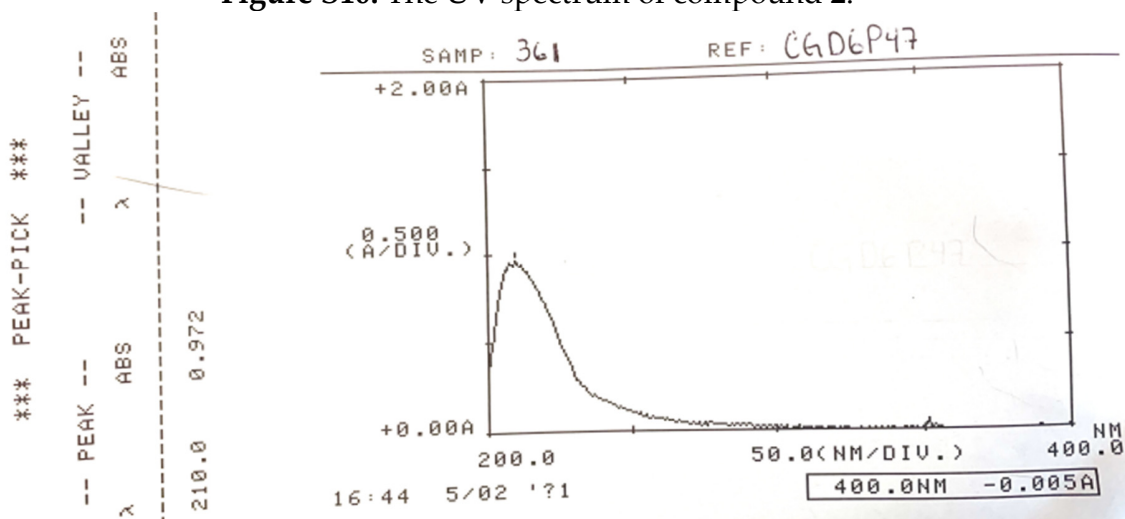


Figure S11. The IR spectrum of compound **2**.

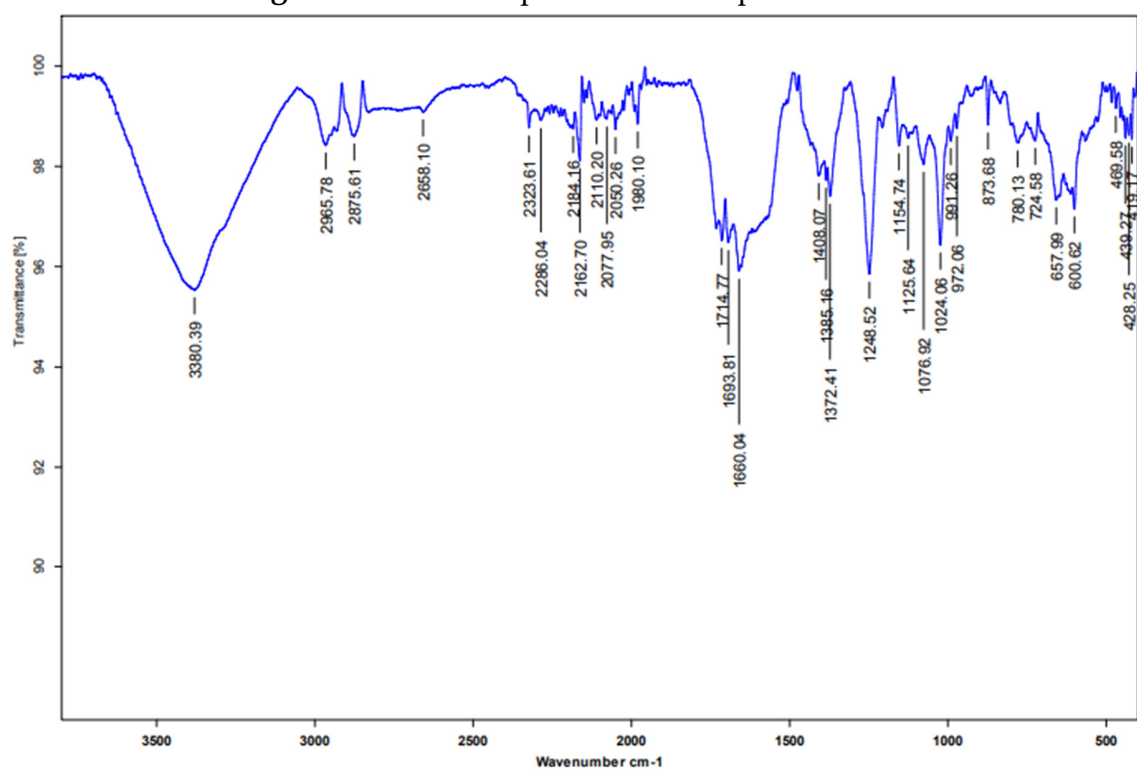


Figure S12. The ^1H NMR spectrum of **3** in CDCl_3 (500 MHz).

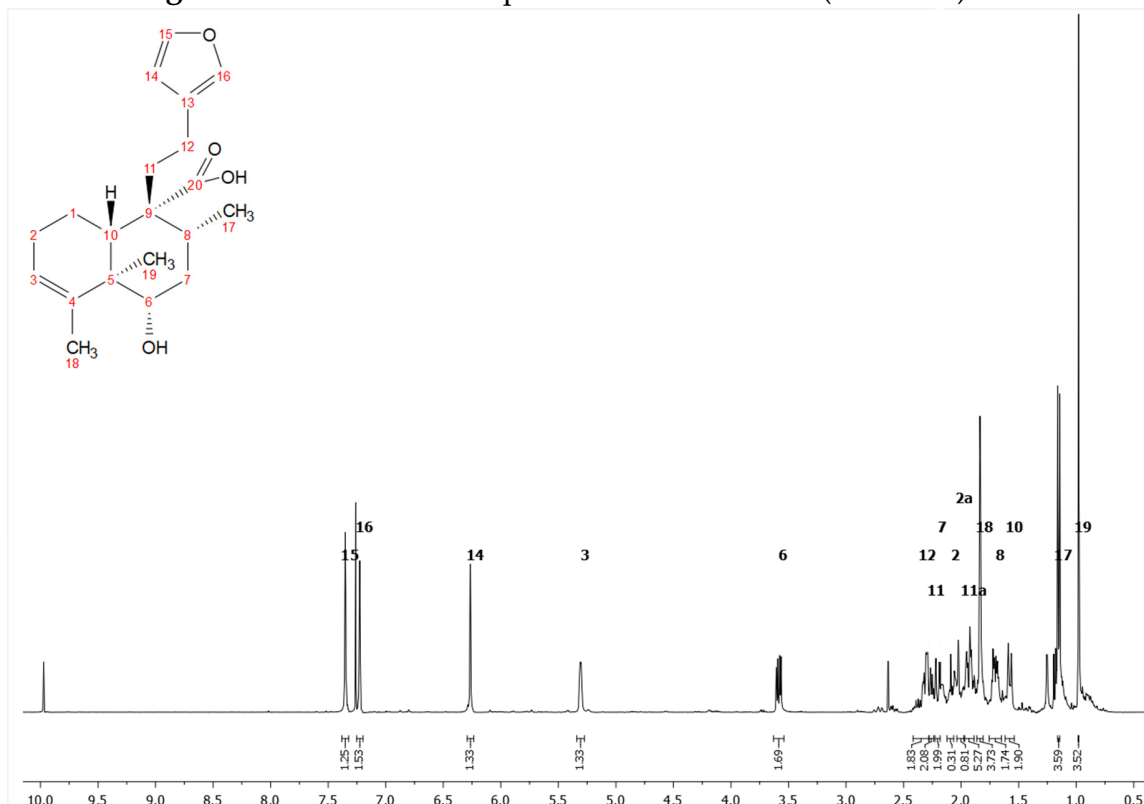


Figure S13. The ^{13}C NMR spectrum of **3** in CDCl_3 (125 MHz).

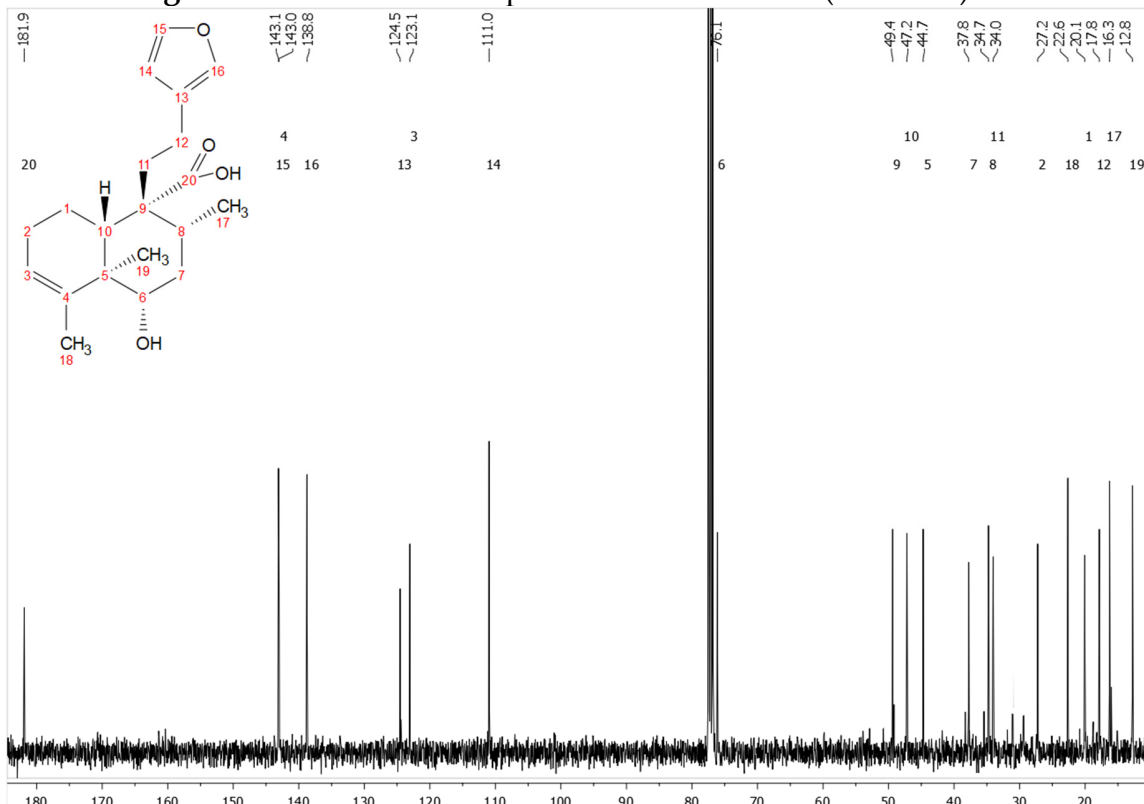


Figure S14. The DEPT spectrum of **3** in CDCL₃ (125 MHz).

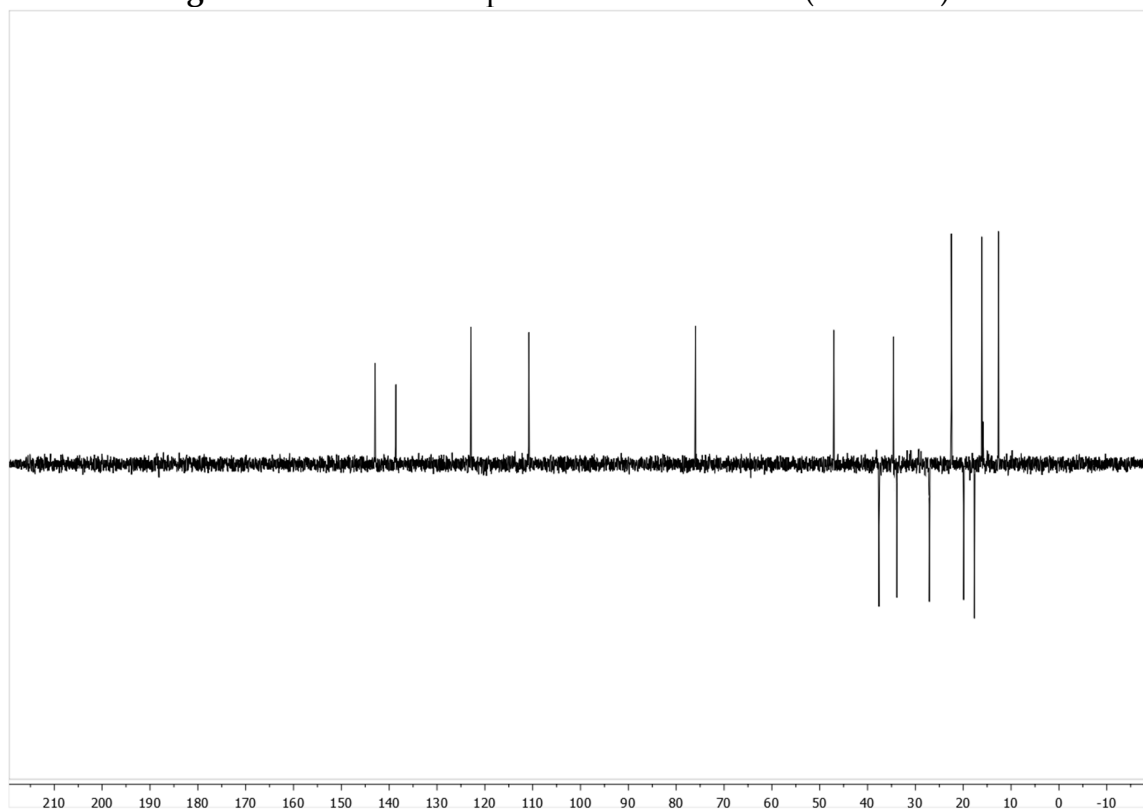


Figure S15. The HSQC spectrum of **3** in CDCL₃.

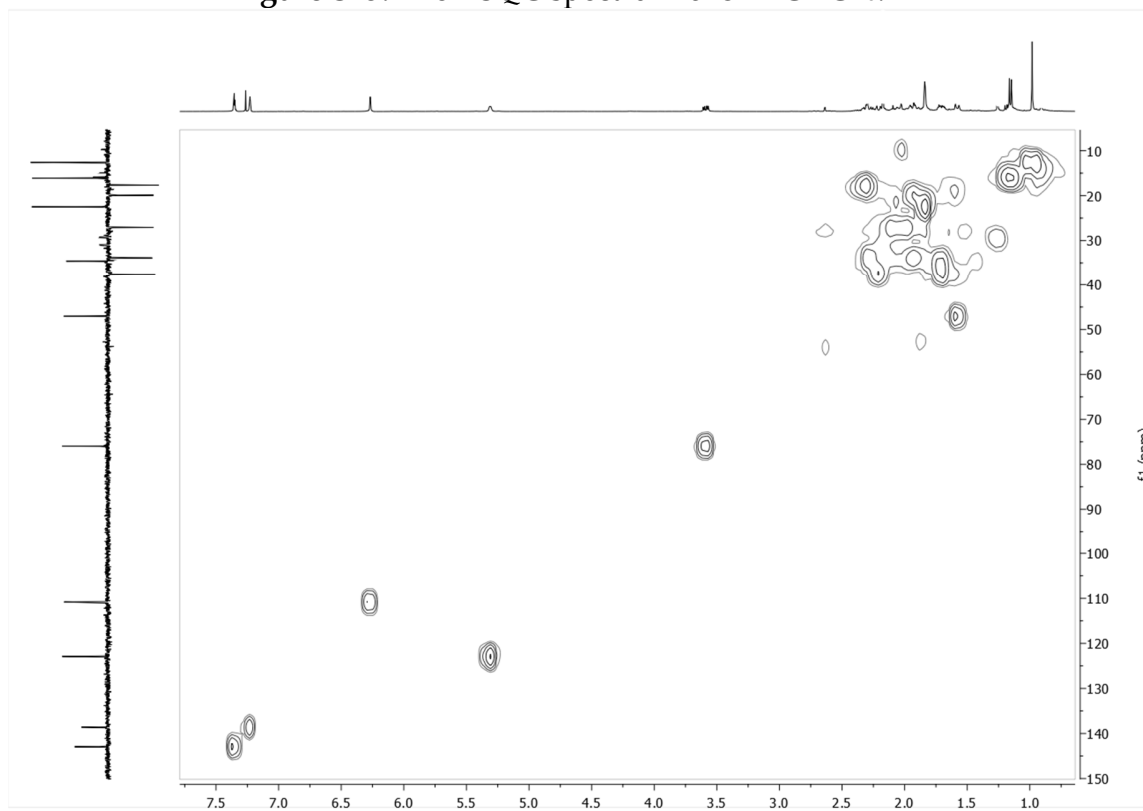


Figure S16. The ^1H - ^1H COSY spectrum of **3** in CDCl_3 .

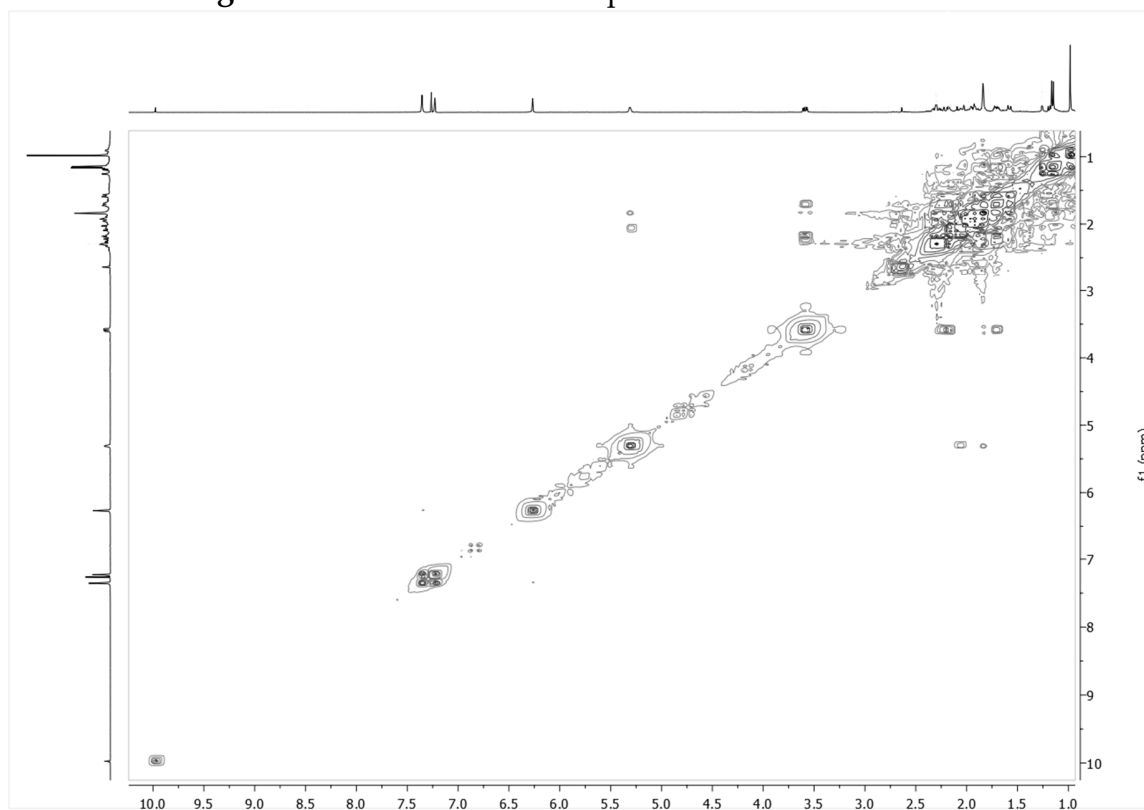


Figure S17. The HMBC spectrum of **3** in CDCl_3 .

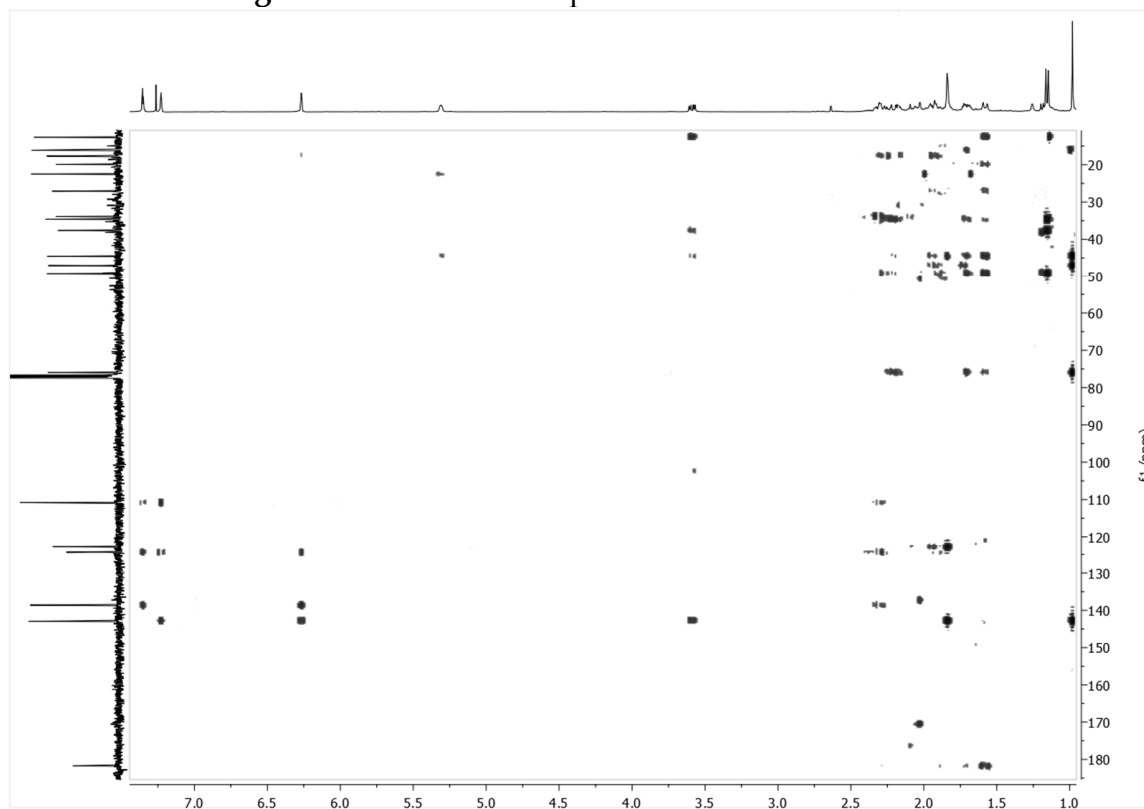


Figure S18. The NOESY spectrum of **3** in CDCl₃.

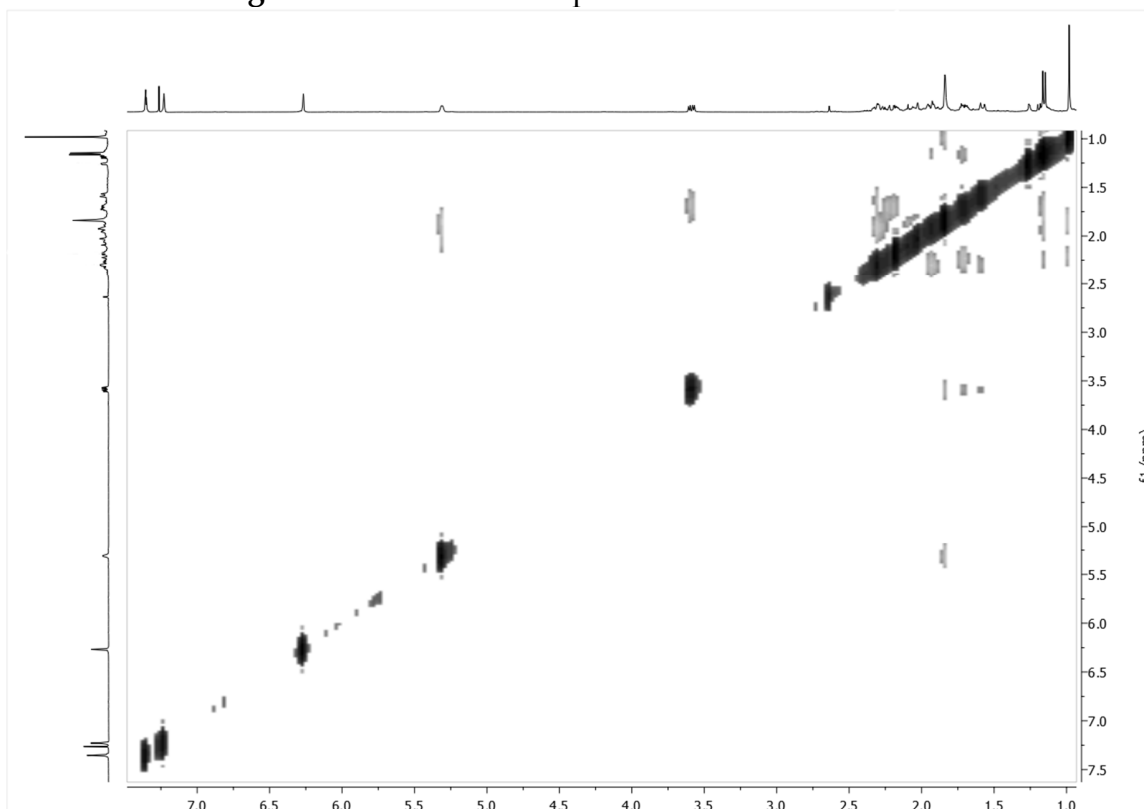


Figure S19. The TOCSY spectrum of **3** in CDCl₃.

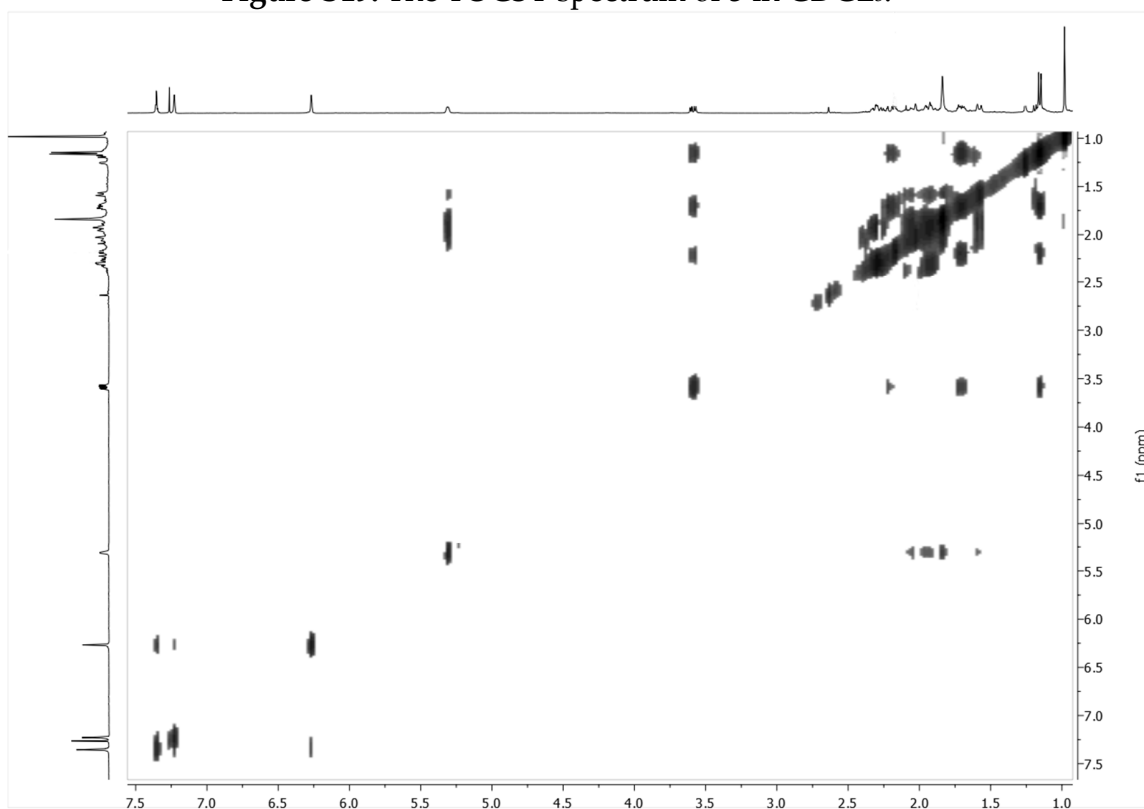


Figure S20. The HRESIMS spectrum of compound **3**.

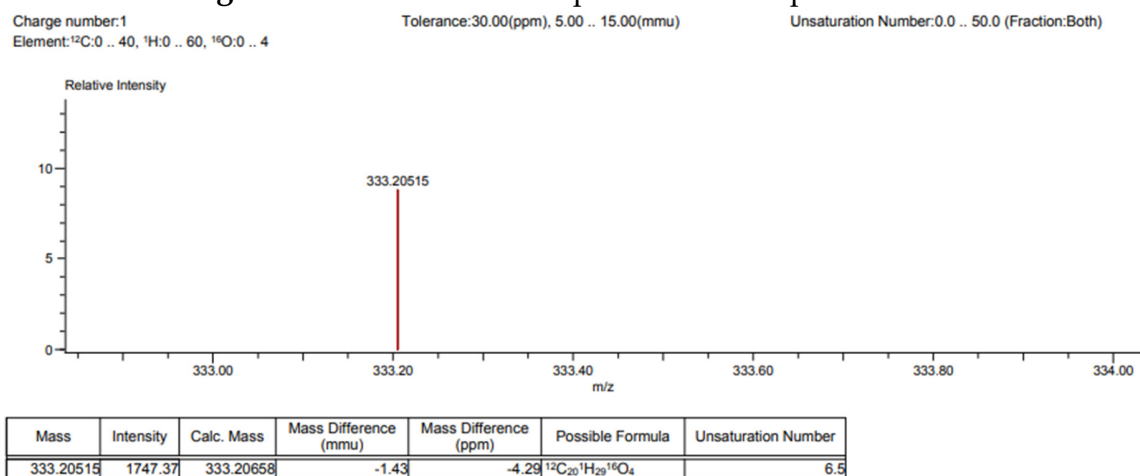


Figure S21. The UV spectrum of compound **3**.

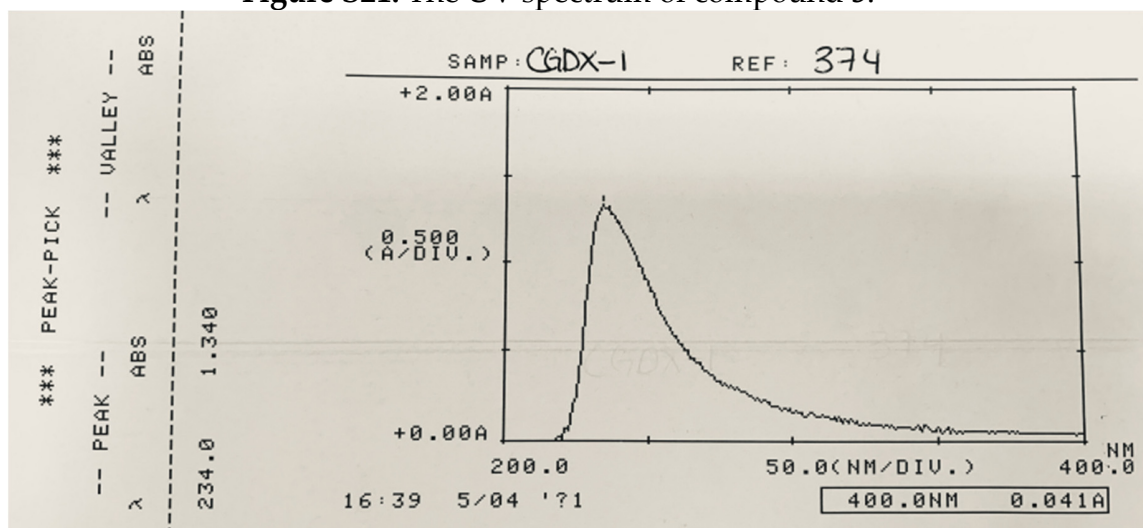


Figure S22. The IR spectrum of compound 3.

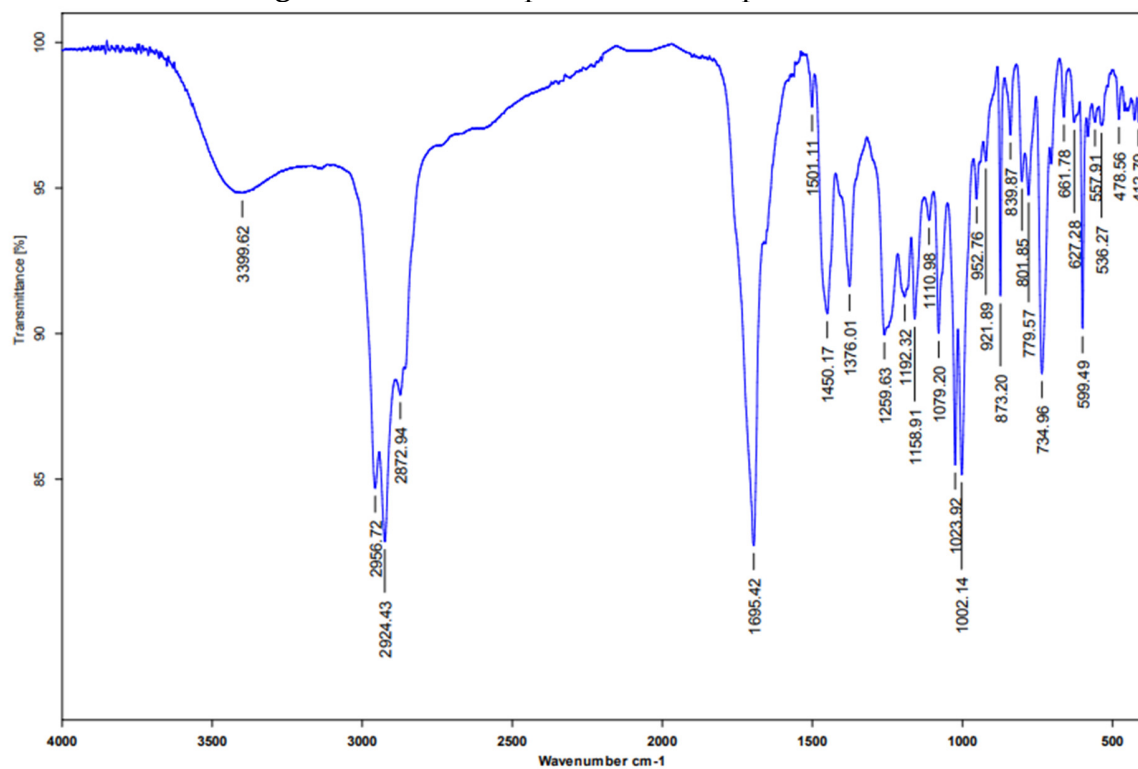


Figure S23. Calibration curve of rutin (6).

Rutin, .99984

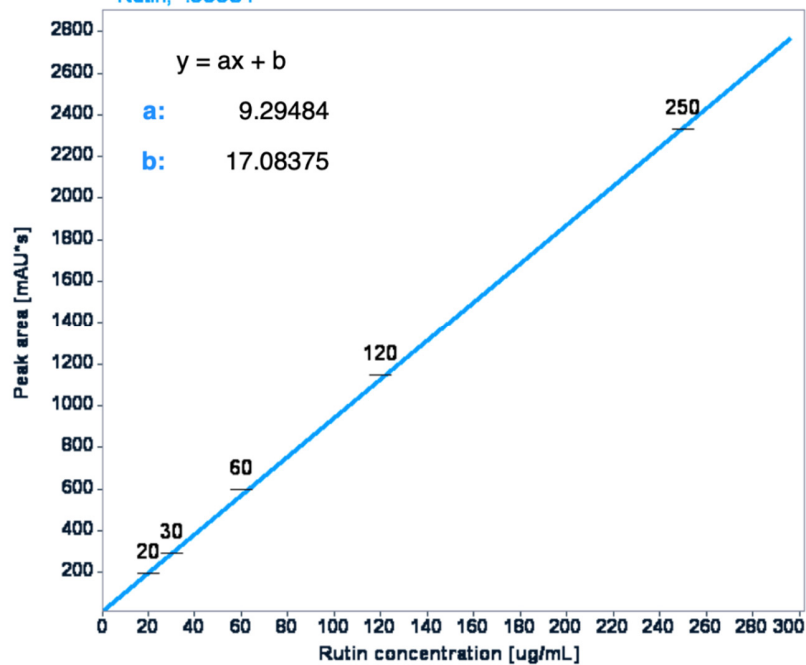


Figure S24. HPLC-MS spectrum obtained from the affinity screening analysis of EWE soluble extract with α -glucosidase, positive mode.

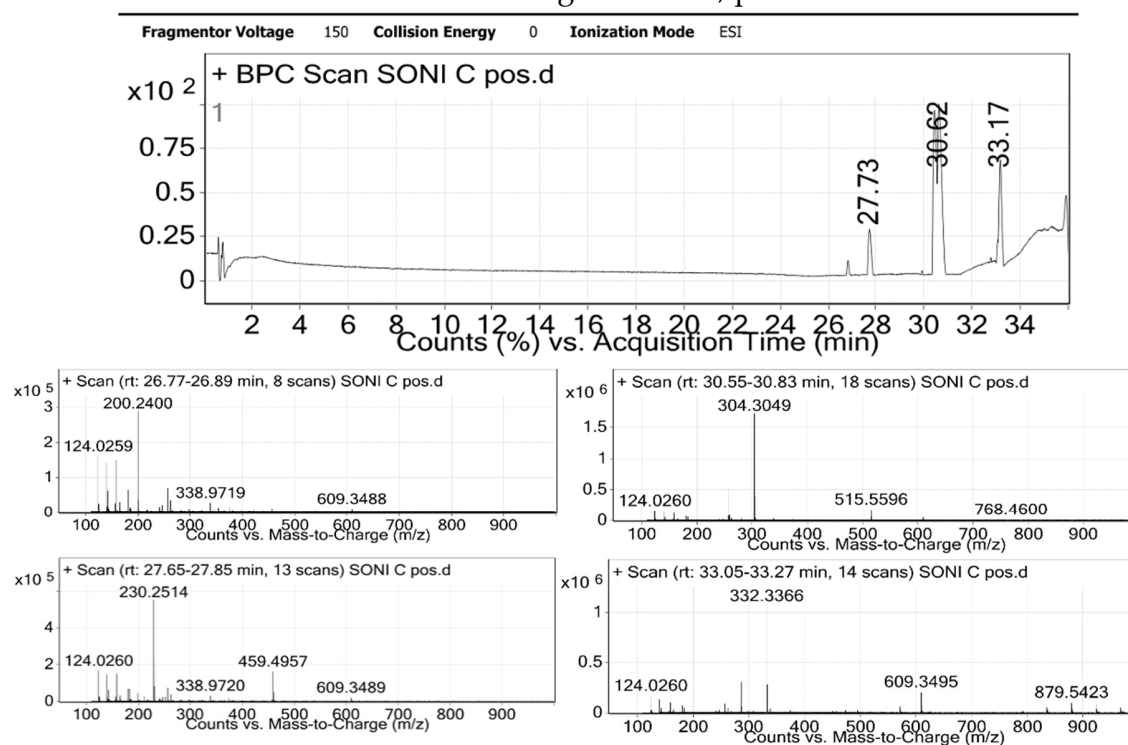


Figure S25. HPLC-MS spectrum obtained from the affinity screening analysis of EWE soluble extract with α -glucosidase, negative mode.

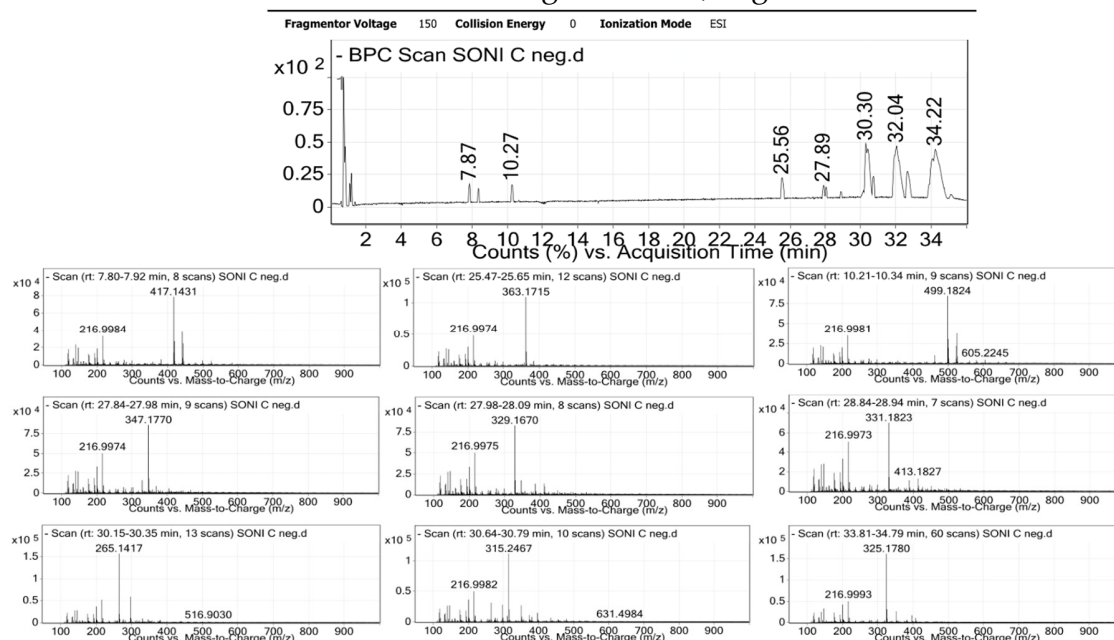


Table S1. Standard calibration curve of rutin (6).

Concentration ($\mu\text{g/mL}$)	Area (mAU)	Mean	%RSD ^a
20.00	196.90	196.53	1.66
	193.10		
	199.60		
40.00	295.00	294.37	0.50
	295.40		
	292.70		
80.00	598.20	597.07	0.90
	591.20		
	601.80		
120.00	1131.70	1146.77	1.21
	1149.70		
	1158.90		
250.00	2311.10	2329.27	0.69
	2341.80		
	2334.90		

^a Relative Standard Deviation Percentage