




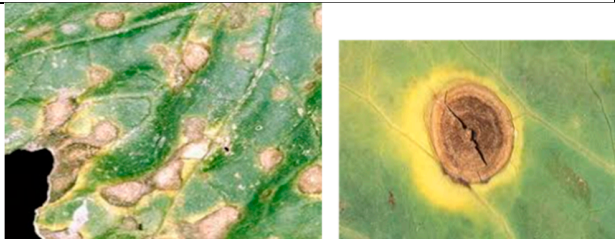



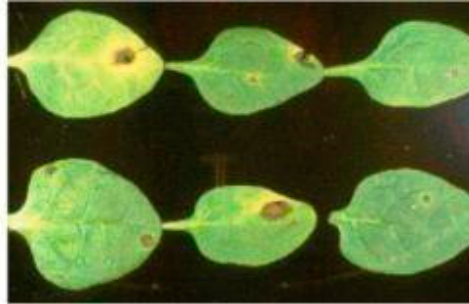
Table S1. Pictures of common diseases affecting cabbage and spinach in Eastern Cape, South Africa.

CABBAGE DISEASES	
 Sclerotinia = C1	 Ring spot = C2
 Fusarium wilt = C3	 Downy Mildew = C4
 Powdery Mildew = C5	 Alternaria leaf spot = C6
 Bacterial spot = C7	

C8= Root rot

C9 = Black rot

SPINACH DISEASES



Anthracnose = S1



Cladosporium leaf spot = S2



Damping off and root rot = S3



Downy mildew = S4



Stemphylium leaf spot = S5