

Figure S1. Expression patterns of *TaTUA* and *TaTUB* genes in wheat leaf and grain during various development stages. **(a)** Expression patterns of *TaTUA* and *TaTUB* genes in wheat leaf; **(b)** Expression patterns of *TaTUA* and *TaTUB* genes in grain. Abbreviations above the line represent organs (tissues) and abbreviations below the line represent developmental stages. 1_lb: first leaf blade; 3_lb: third leaf blade; 5_lb: fifth leaf blade; flb: flag leaf blade; Grain: grain; See: seeding stage; 3_lea: three leaf stage; 5_lea: fifth leaf stage; Till: tillering stage; F_lea: flag leaf stage; Fboot: full boot; 30%sp: 30% spike; Emer: ear emergence; Mil_g: milk grain stage; S_dou: soft dough; D_dou: hard dough; Rip: ripe stage.

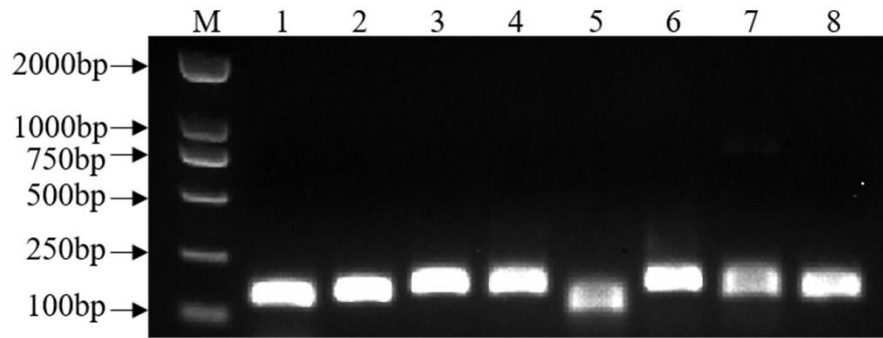


Figure S3. The gel electrophoresis of the primers. M: marker; 1: *TaActin*; 2: *TUB-1B1*; 3: *TUA-2B*; 4: *TUB-3B*; 5: *TUB-4A1*; 6: *TUA-4B2*; 7: *TUB-6D*; 8: *TUB-Un*.

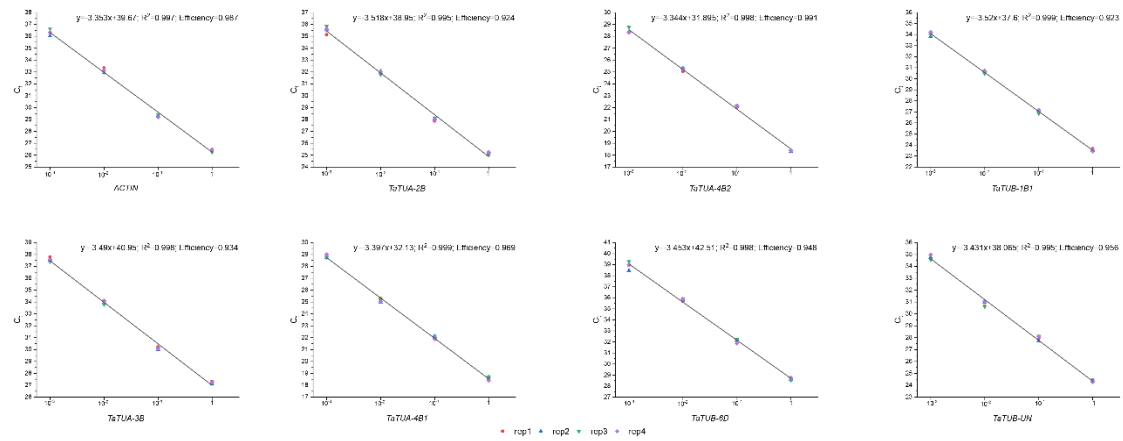


Figure S4. The standard curves of the primers.