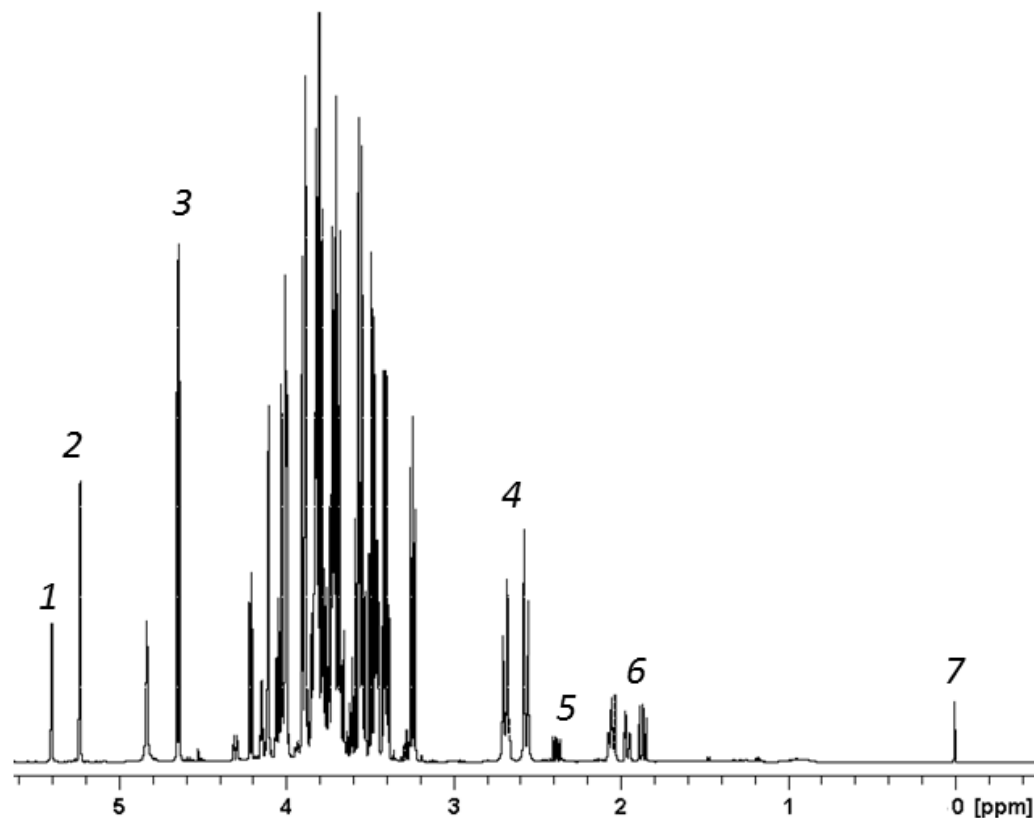


Supplementary File S1

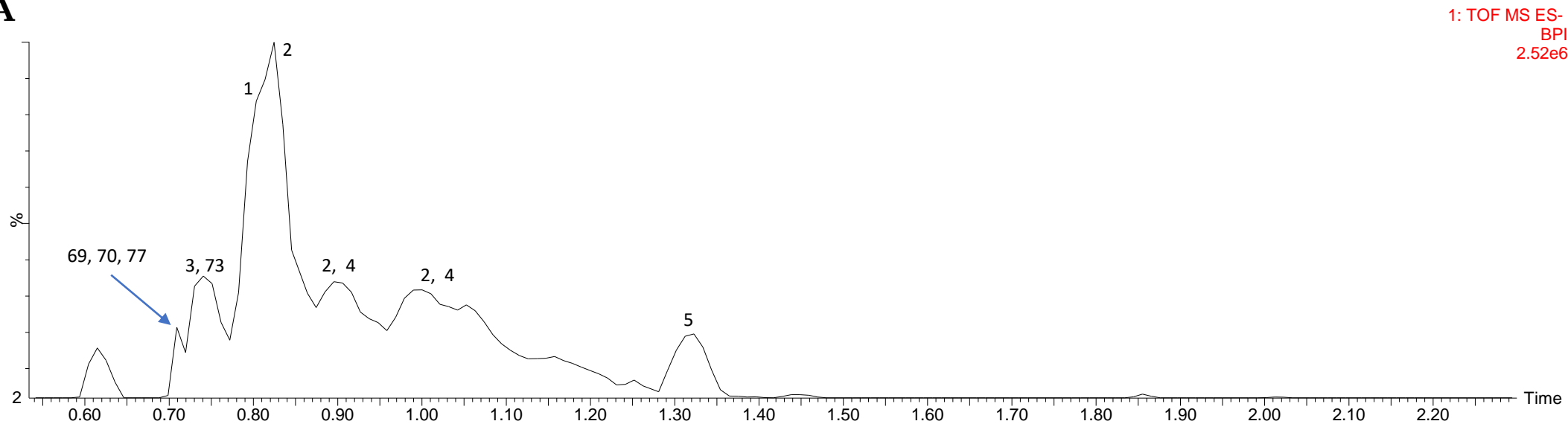
- NMR spectrum of kiwifruit
- Chromatographic profiles obtained in negative ionization mode by UPLC-ESI-MS, with a method optimized for small molecule (**A**) and a standard method (**B**). The numbers in black represent the putatively annotated metabolites, described in Table 3. The numbers in red are the m/z values of abundant and unidentified metabolites.
- Table of relative contents of quinic acid



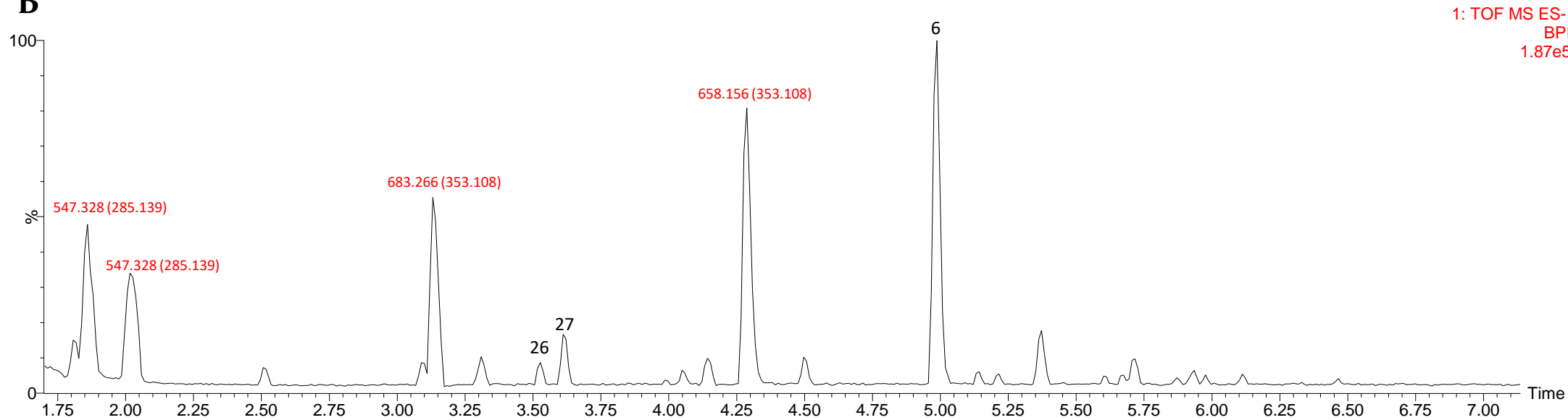
Representative ^1H NMR spectrum of Kiwi Hayward aqueous extract at 25°C. The assignment of selected peaks is reported: 1: sucrose; 2: α -glucose; 3: β -glucose; 4: citric acid; 5: malic acid; 6: quinic acid; 7: DSS- d_6 . The NMR-based quantification has been done for the most abundant metabolites that are sugars, and reported in milligrams of metabolites/ 100 grams of homogenized fruit powder. Sucrose: 1030 mg/100 g; Glucose: 3594 mg/100 g; Fructose: 3355 mg/100 g.

Carrot

A

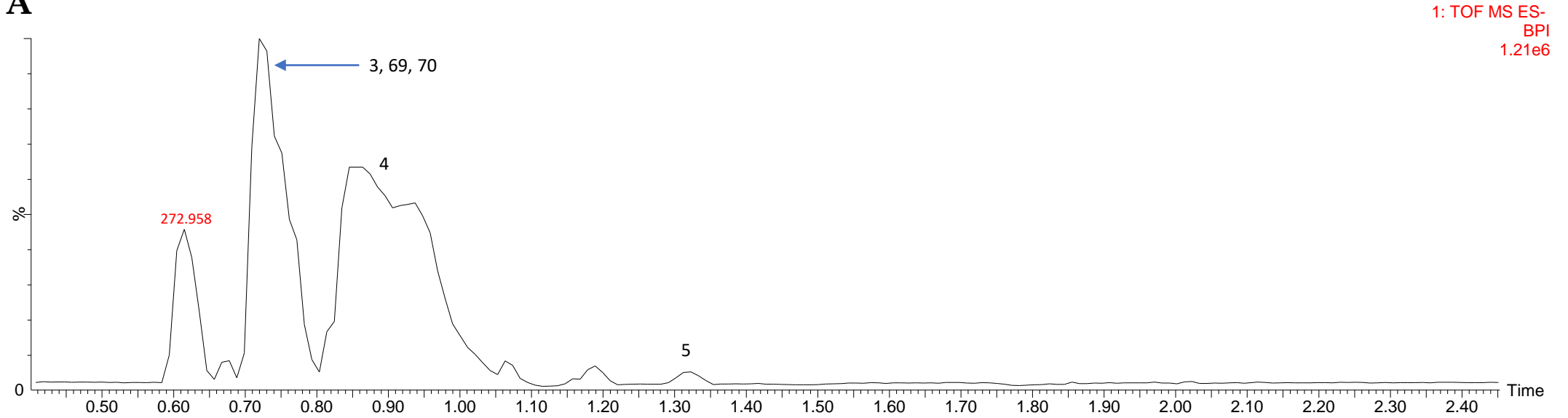


B

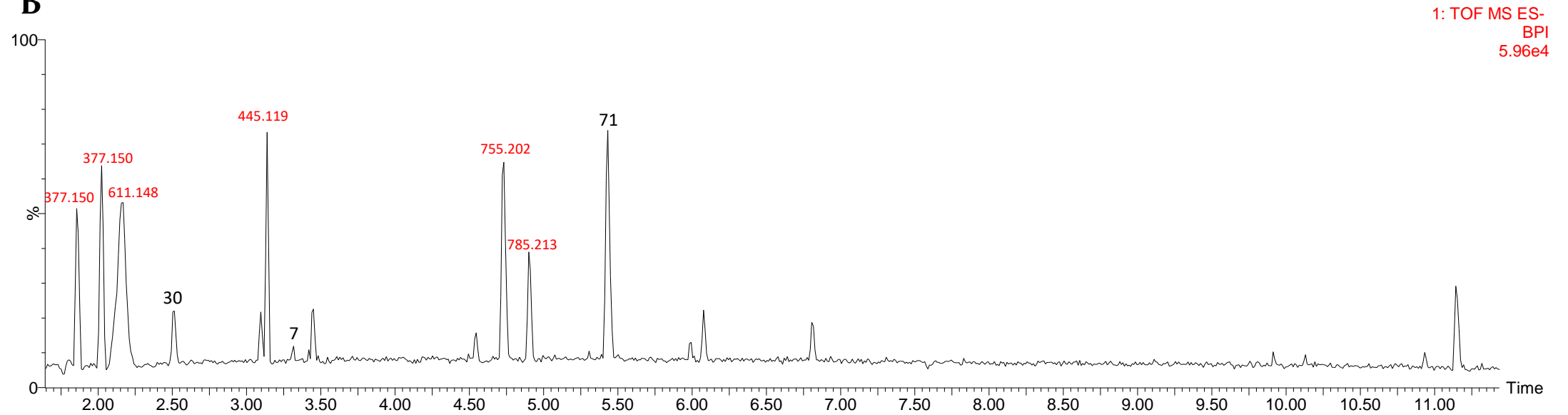


Cucumber

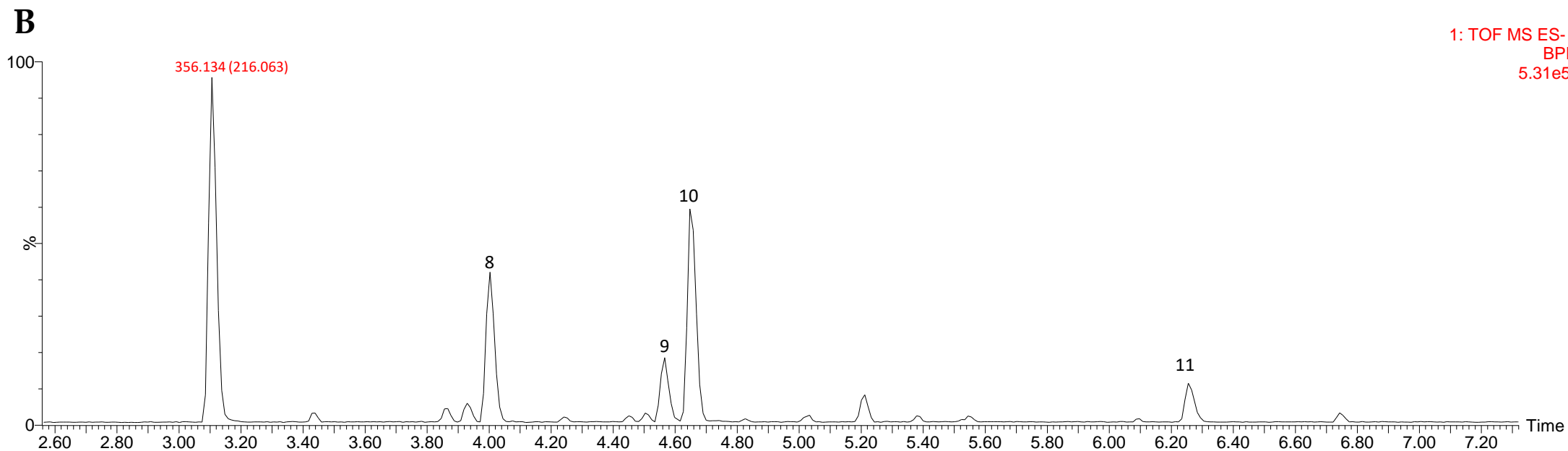
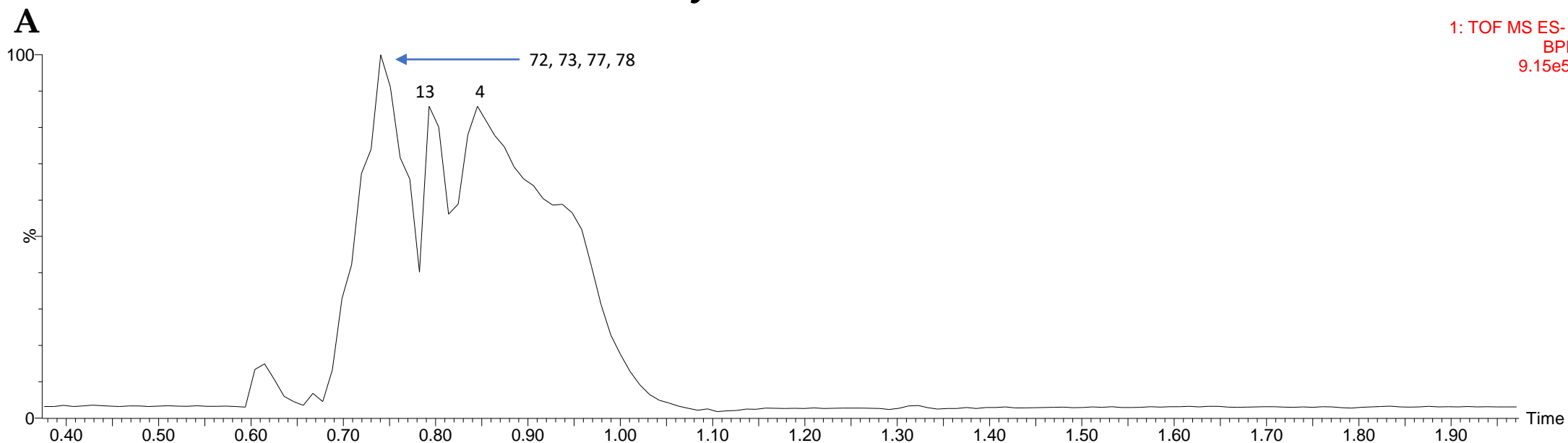
A



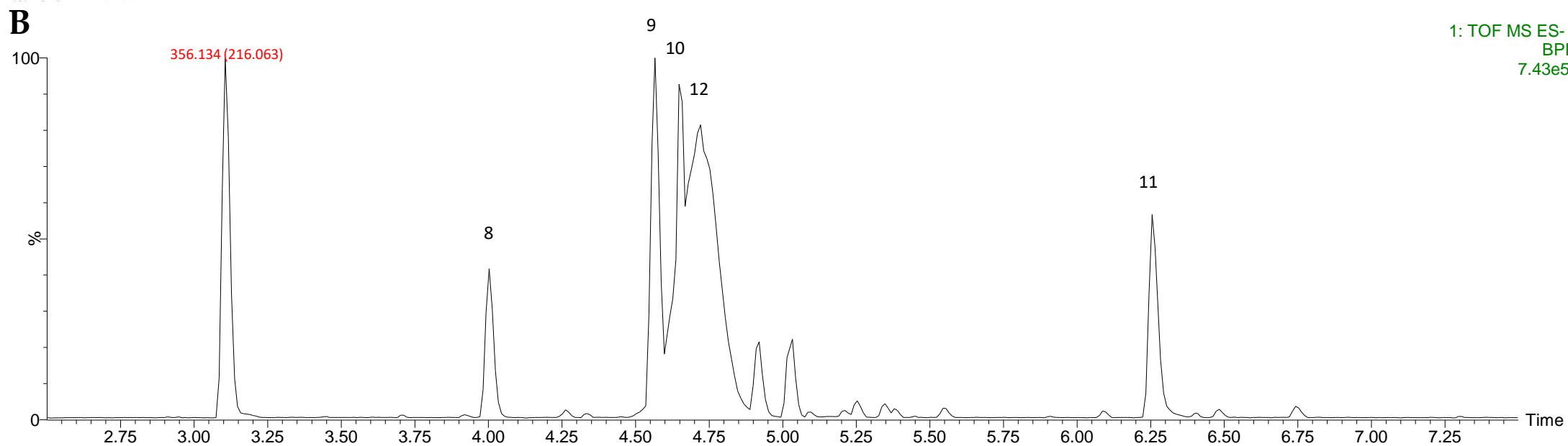
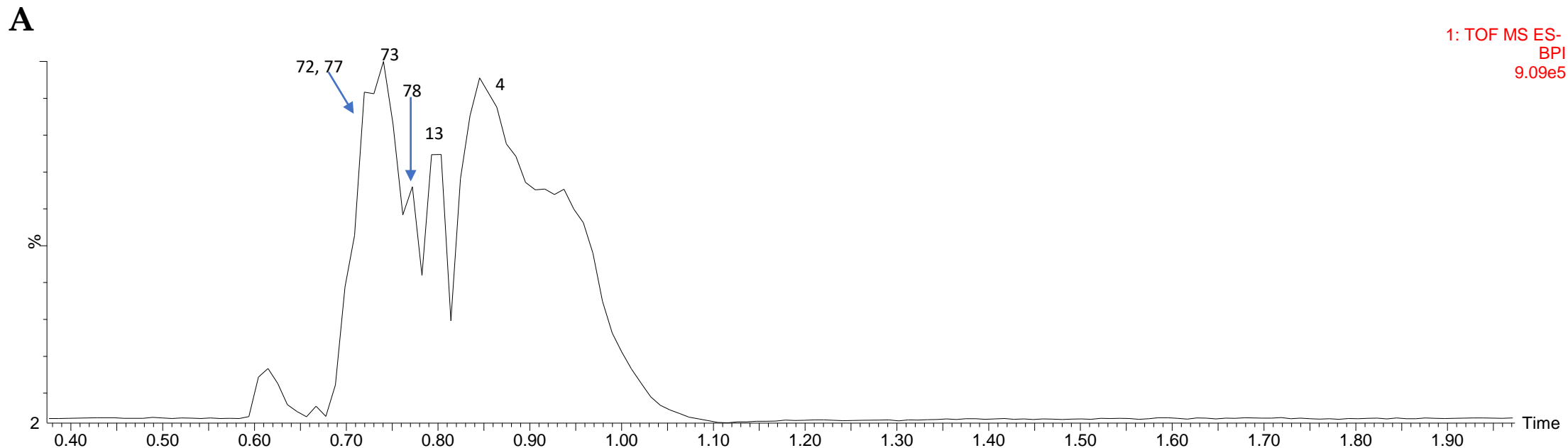
B



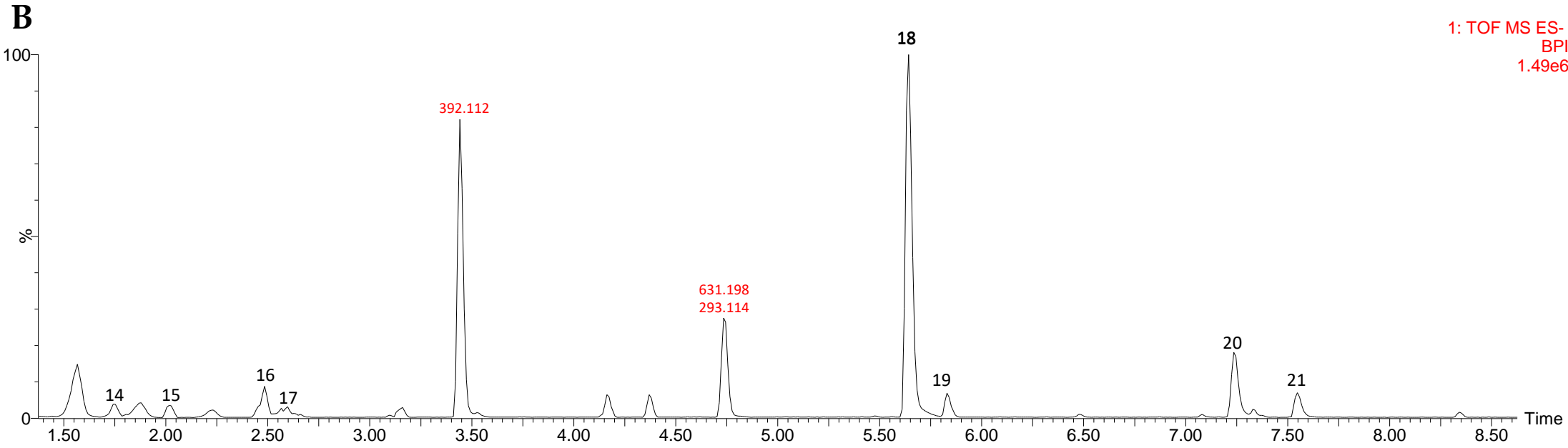
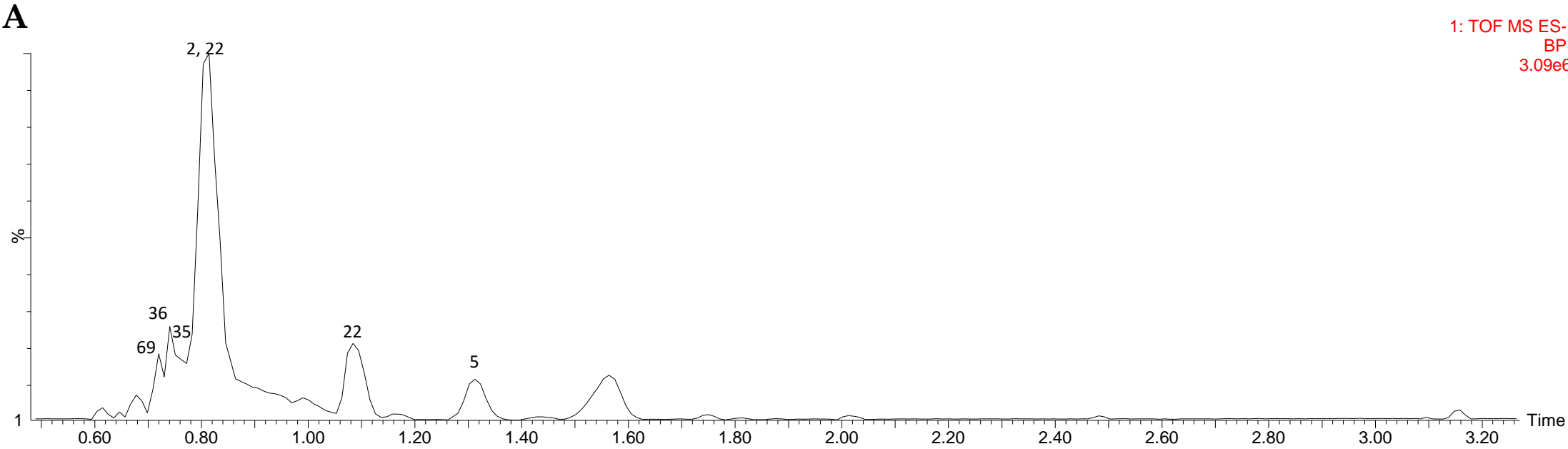
Cherry cv. Black Star



Cherry cv. Roana

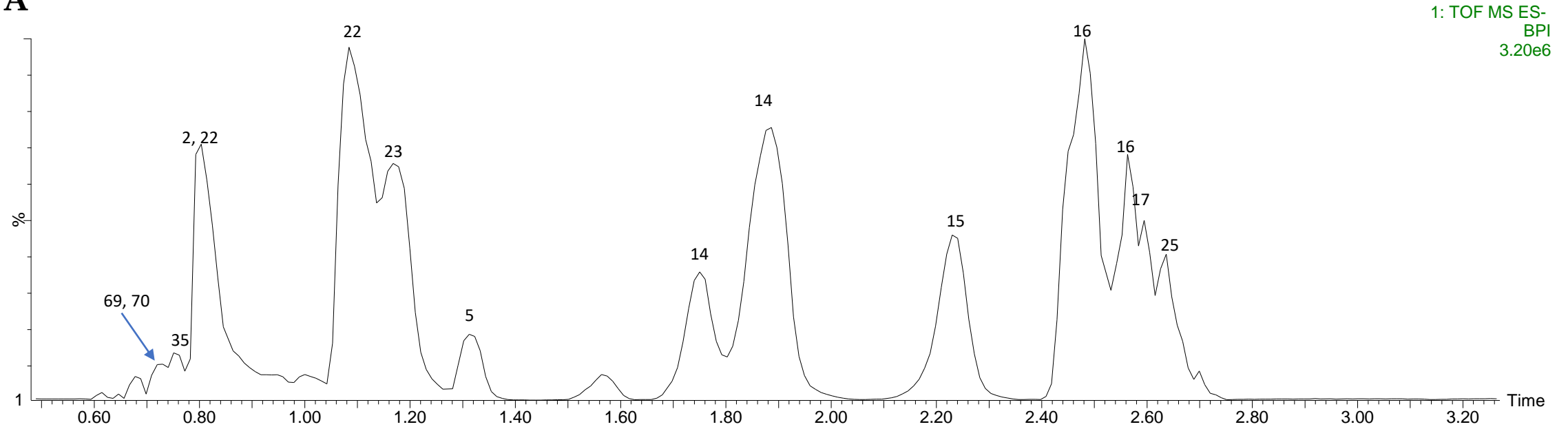


Onion

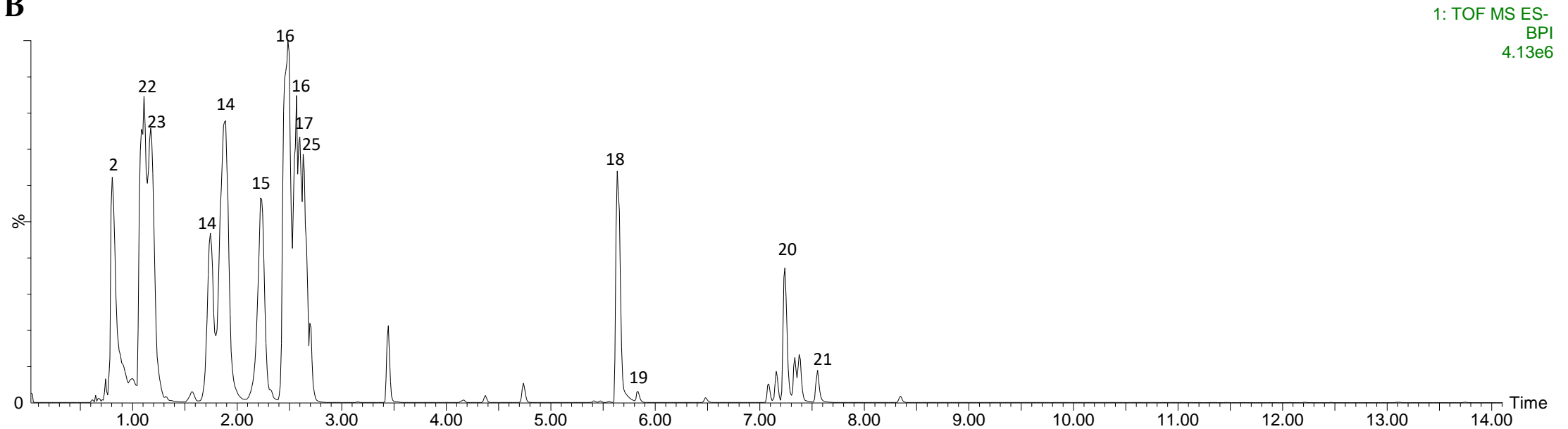


Shallot

A

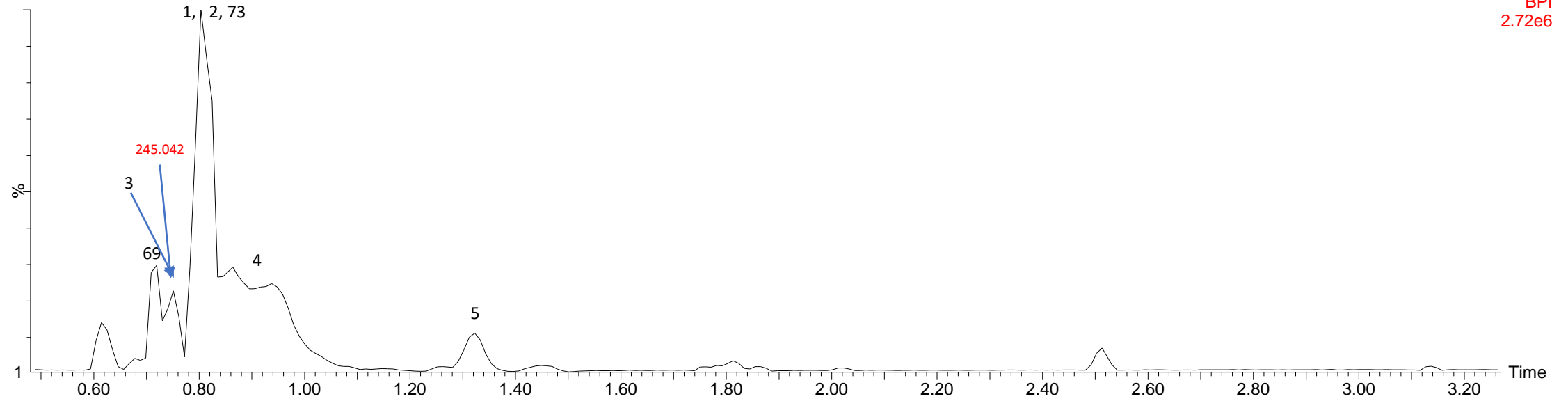


B

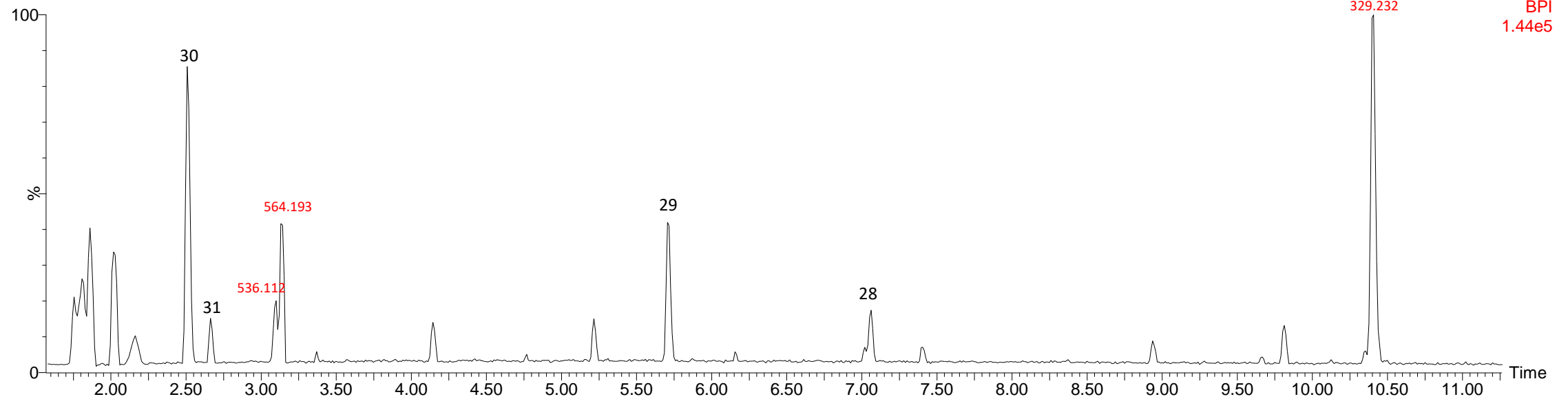


Fennel

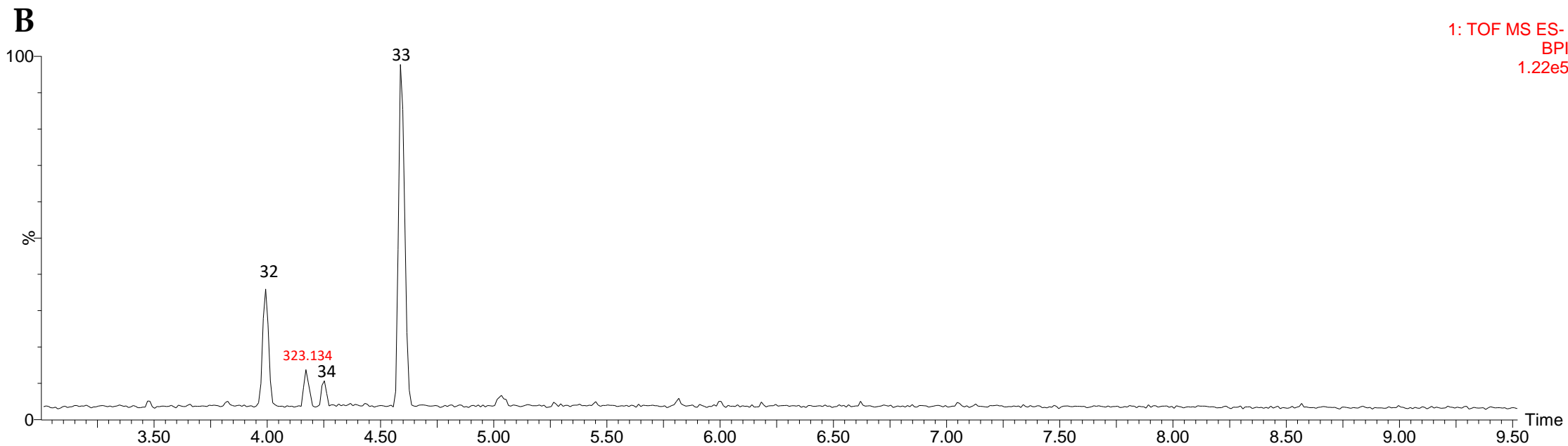
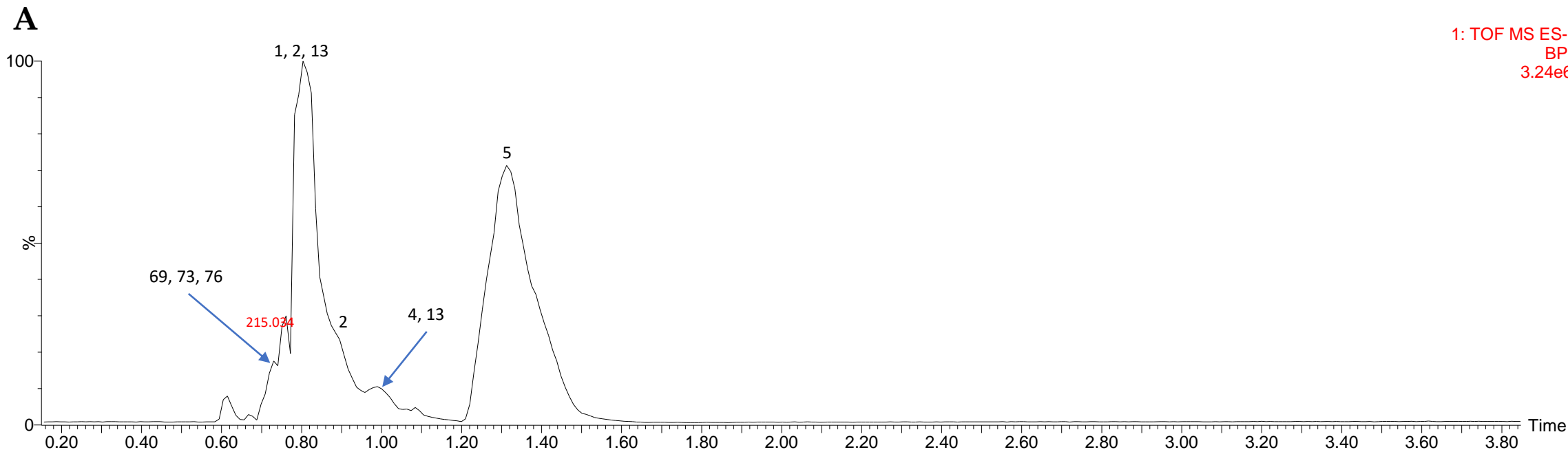
A



B

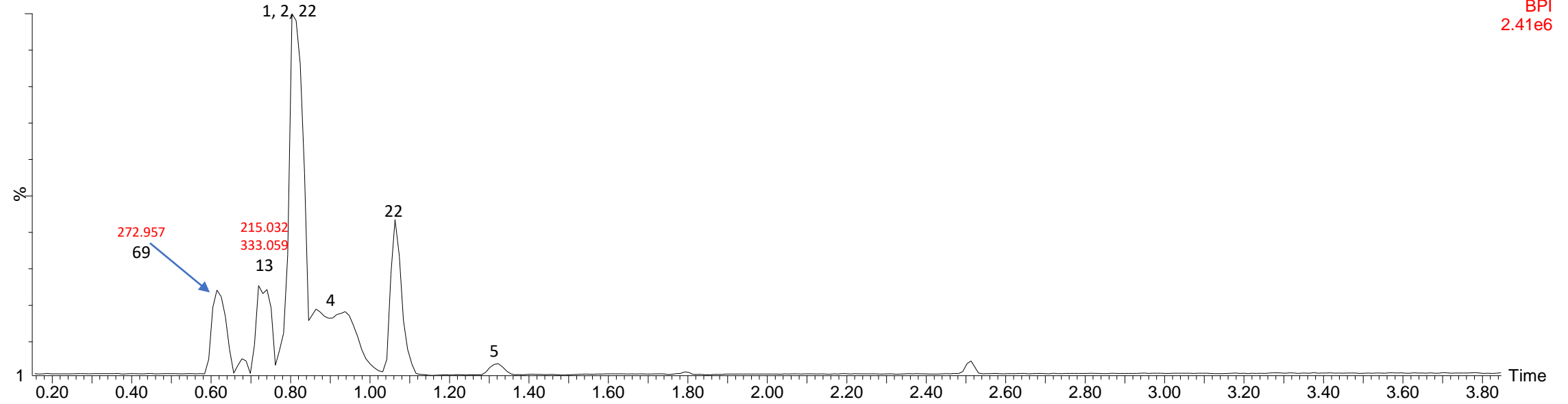


Kiwifruit

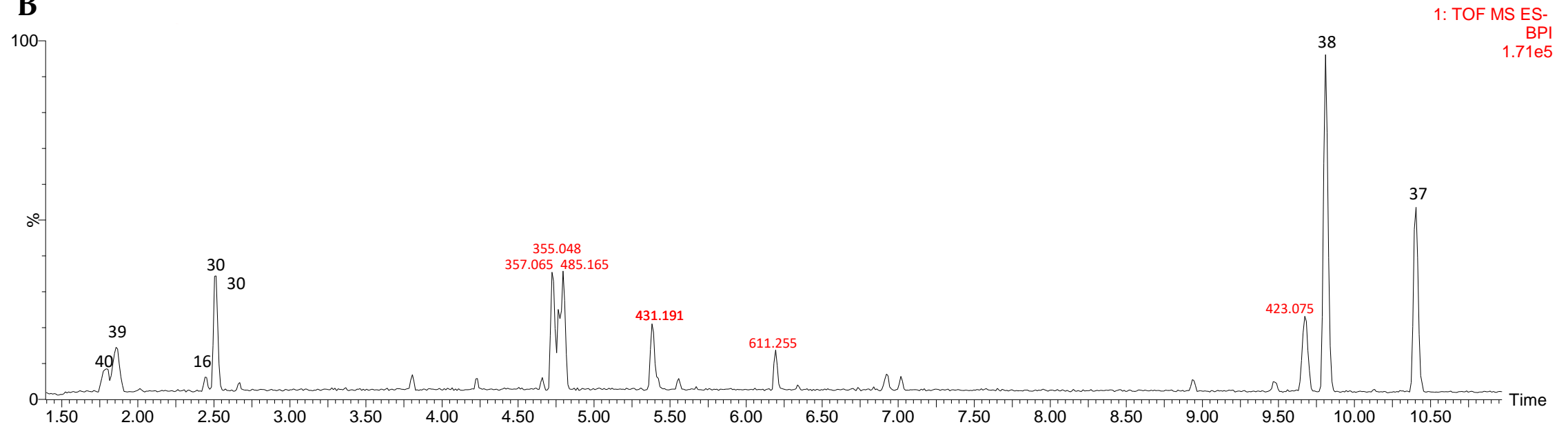


Lettuce

A

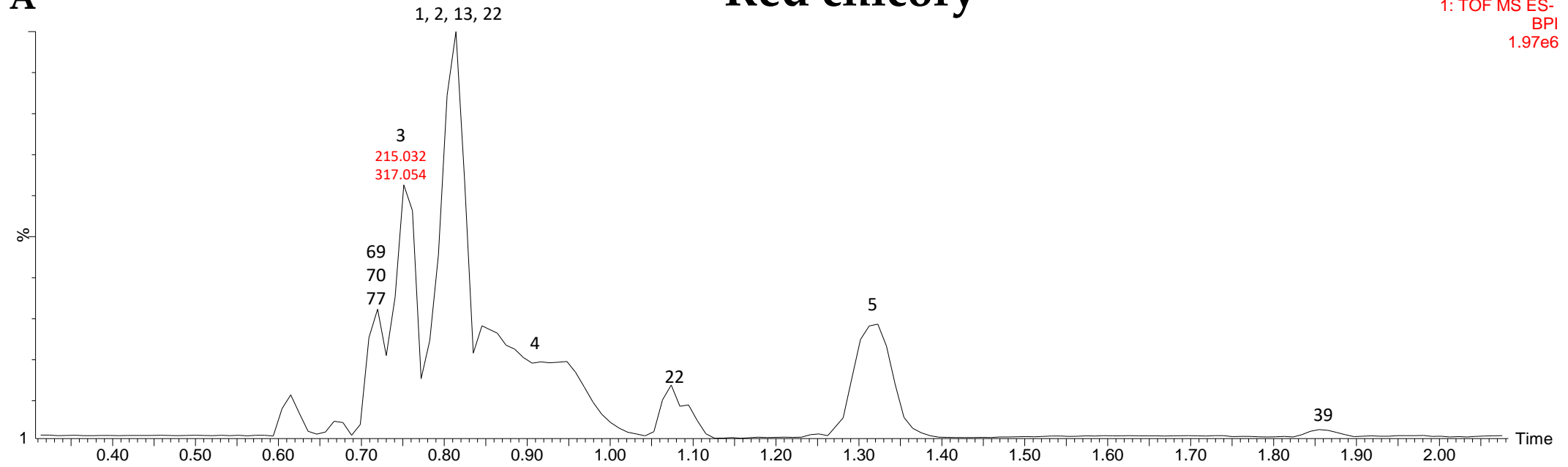


B

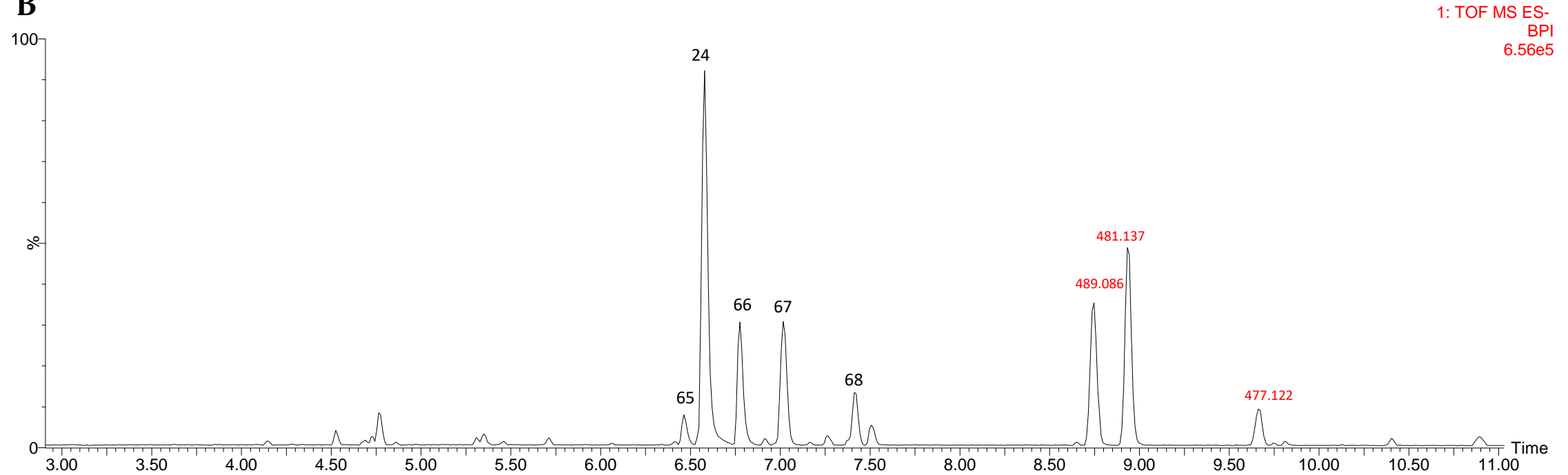


Red chicory

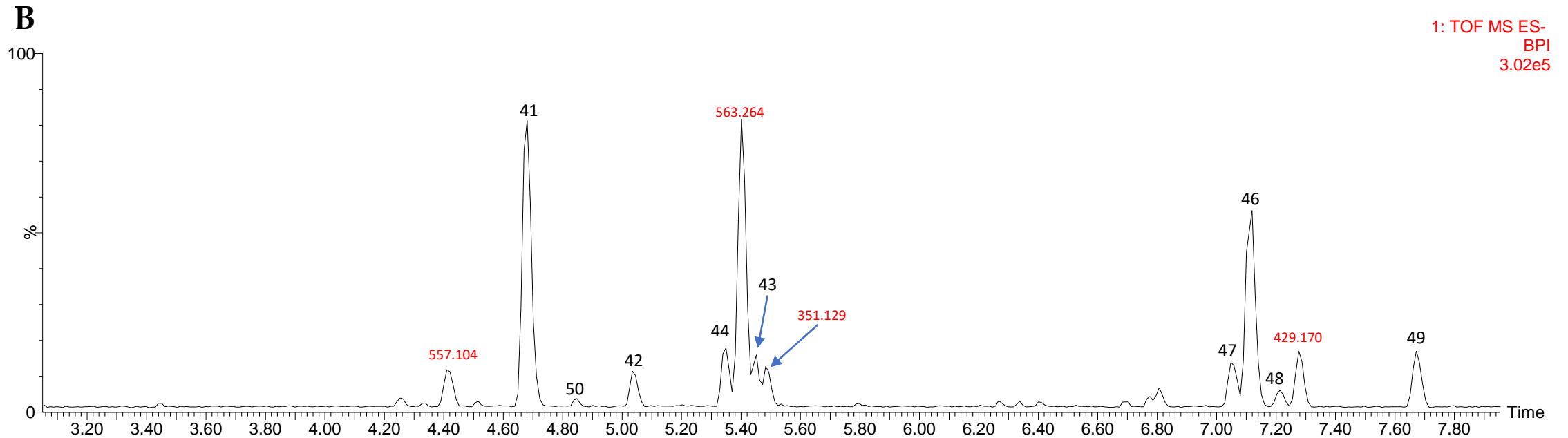
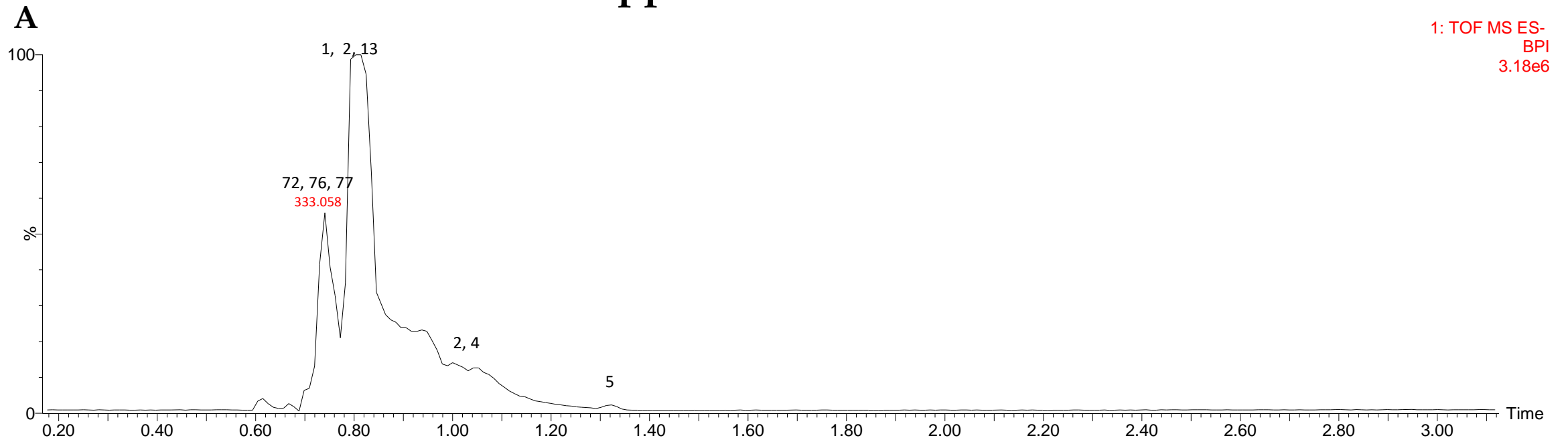
A



B

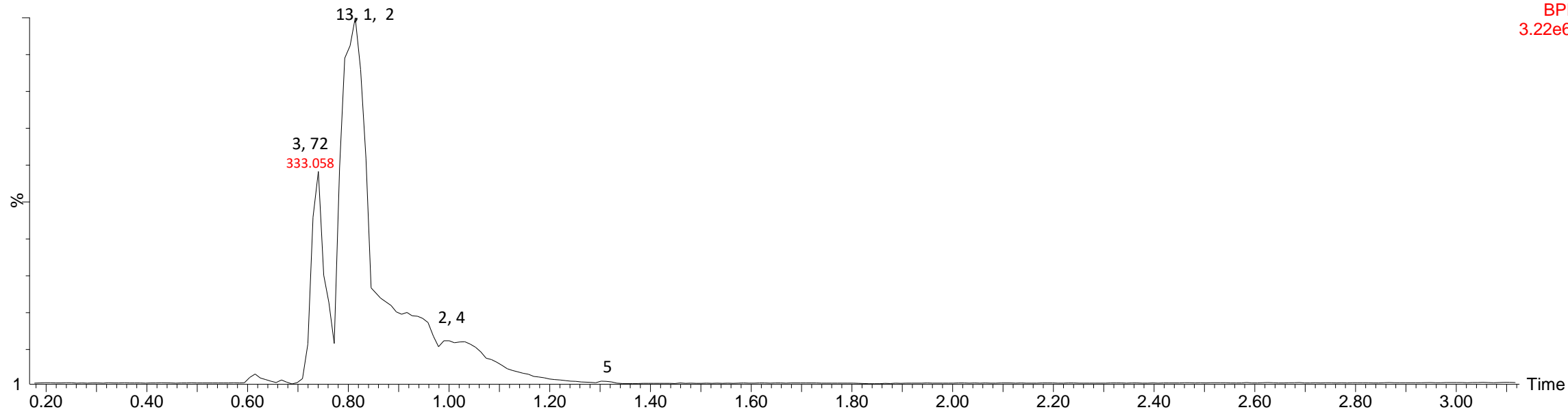


Apple cv. Golden

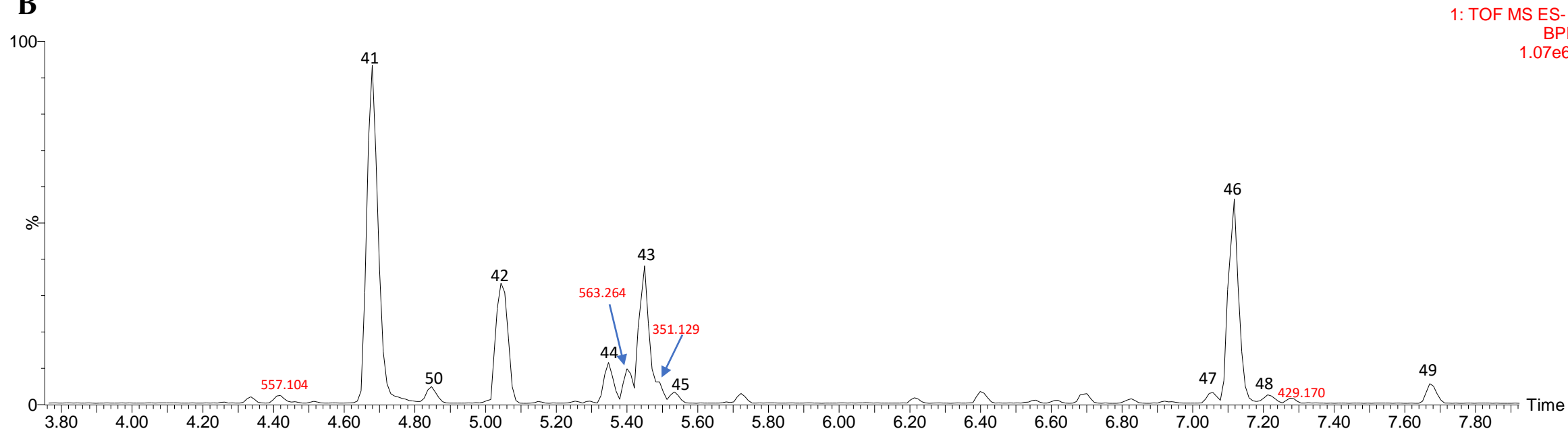


Apple cv. Prussian

A

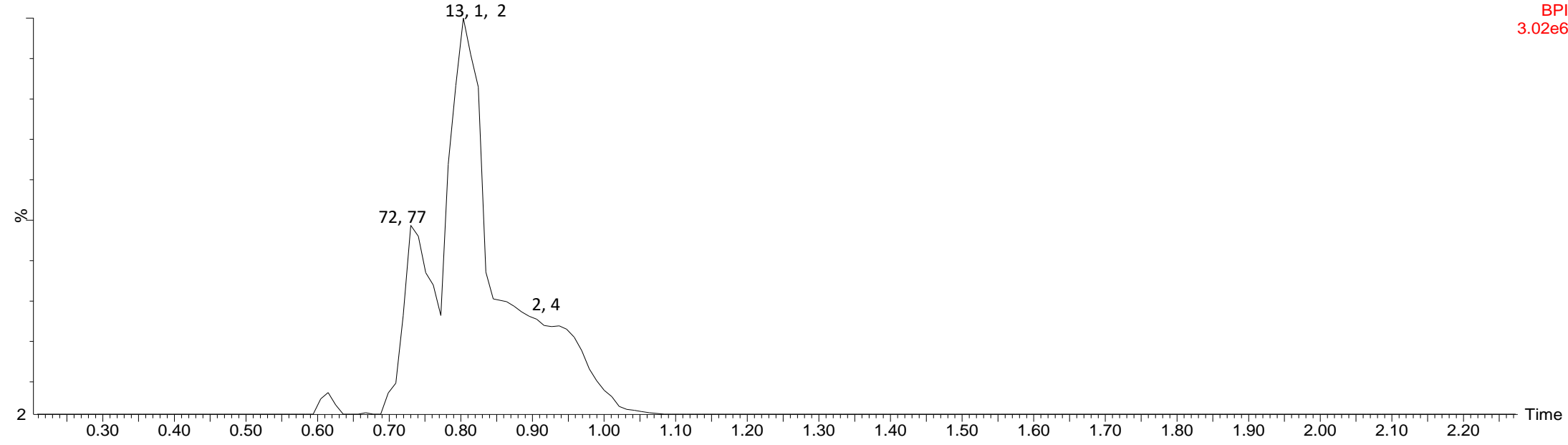


B

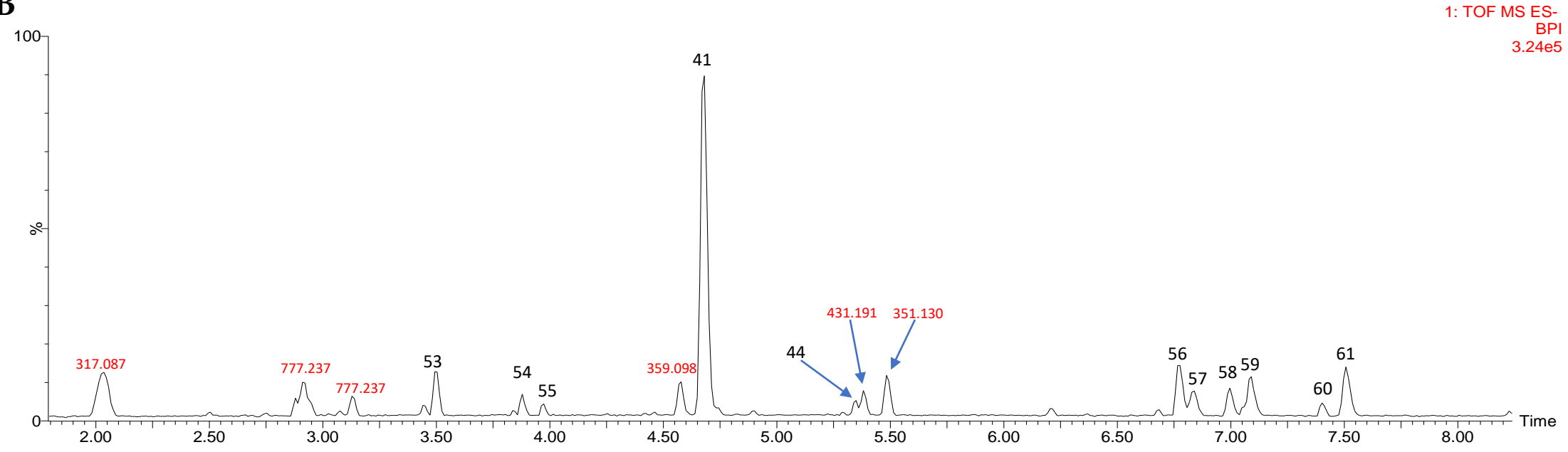


Pear

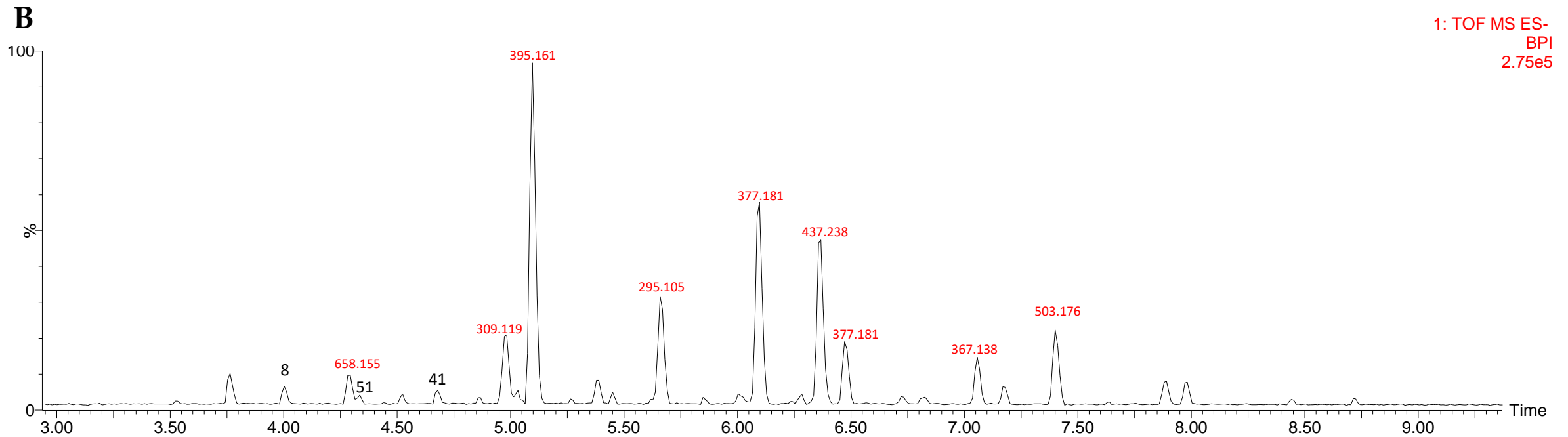
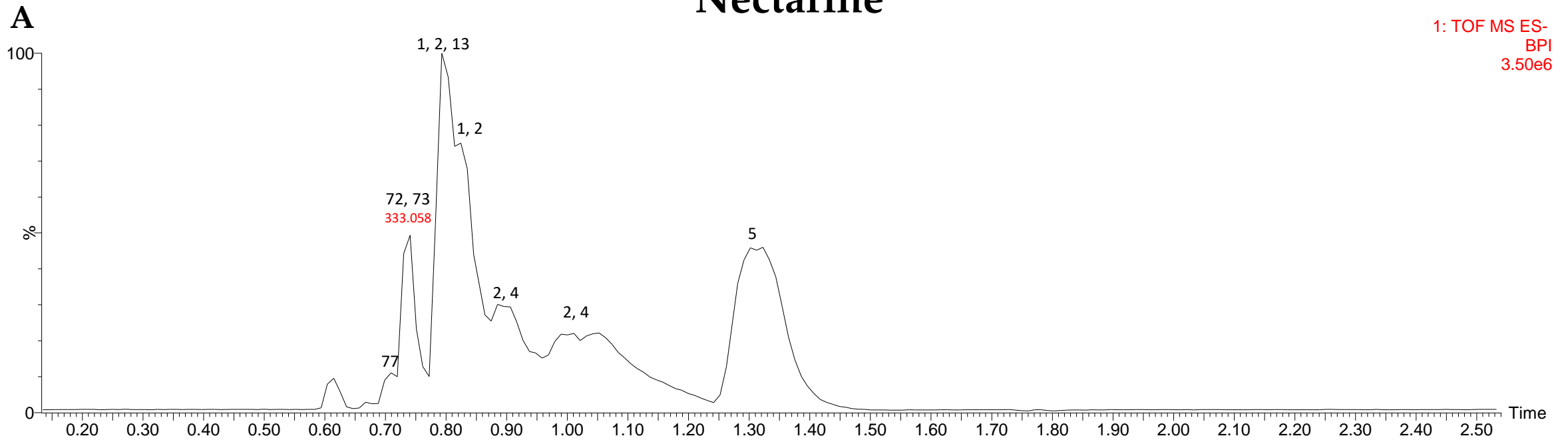
A



B

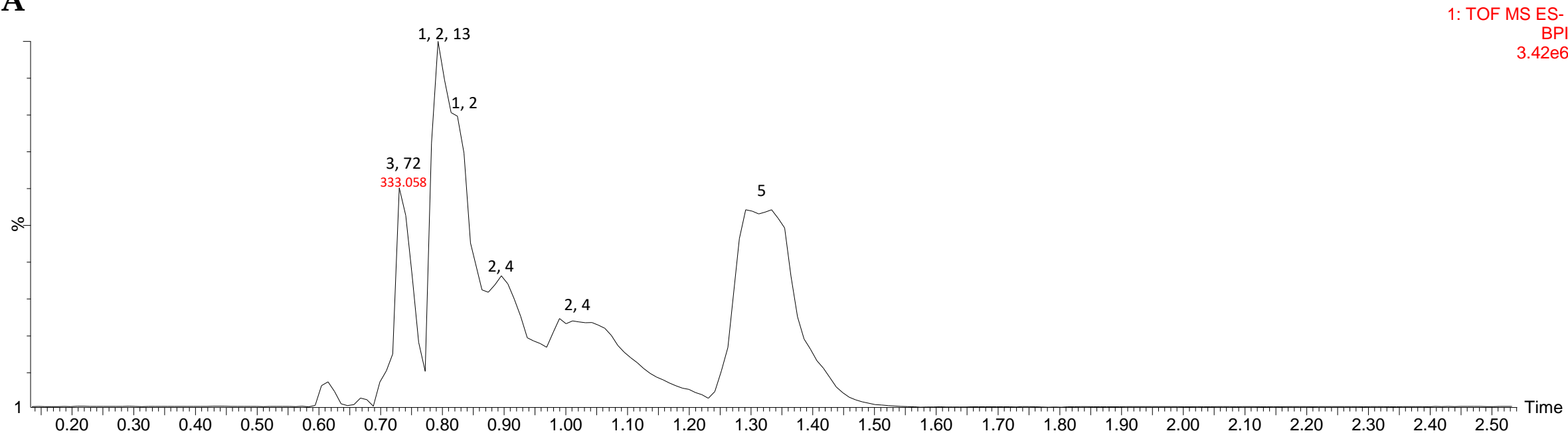


Nectarine

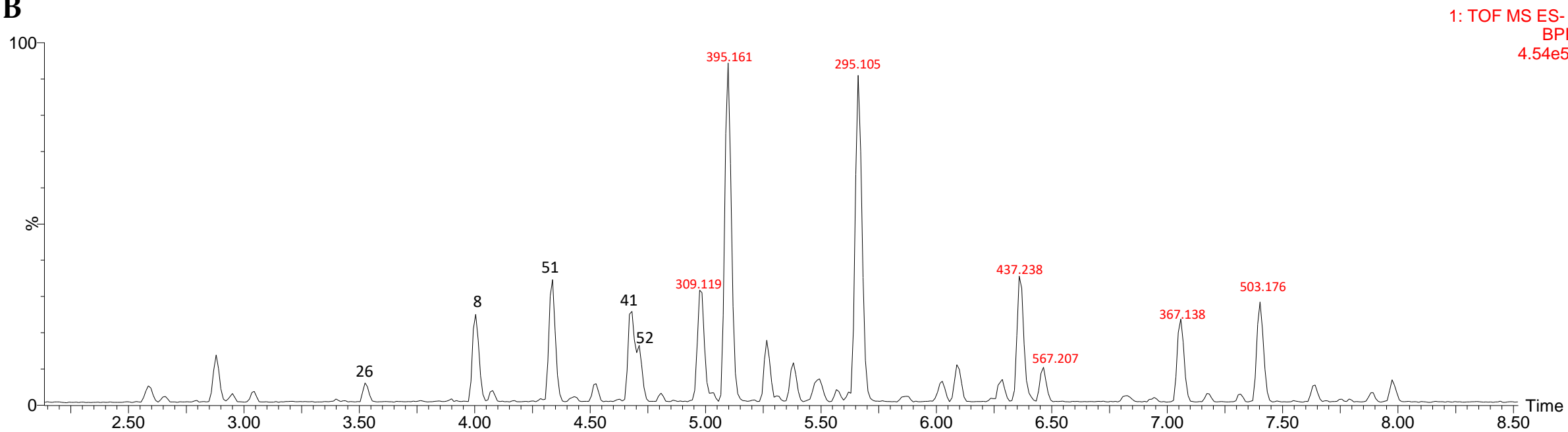


Peach

A

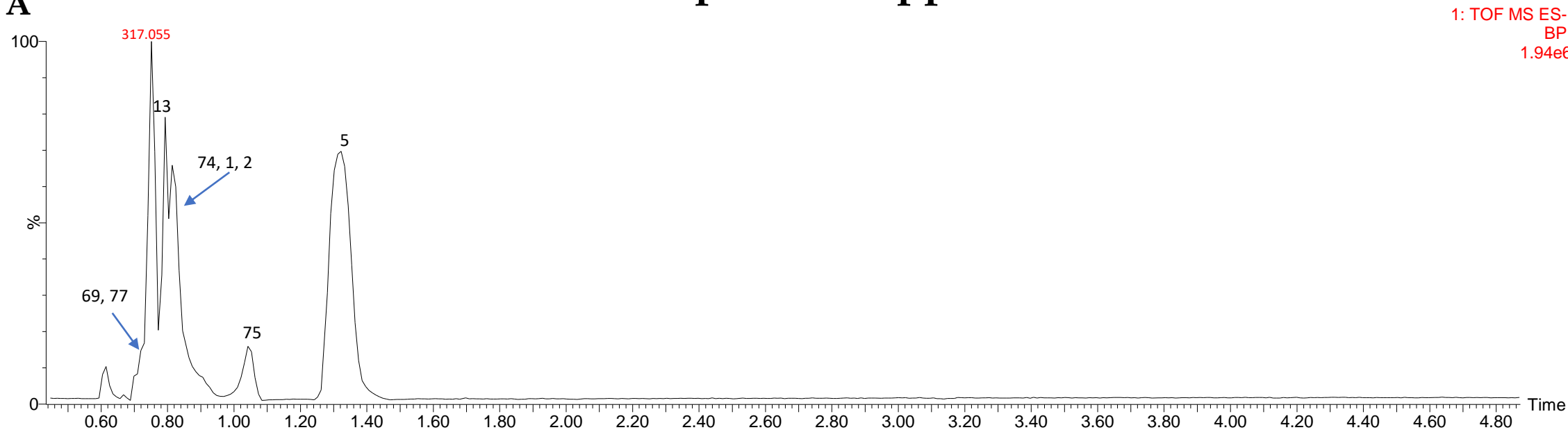


B

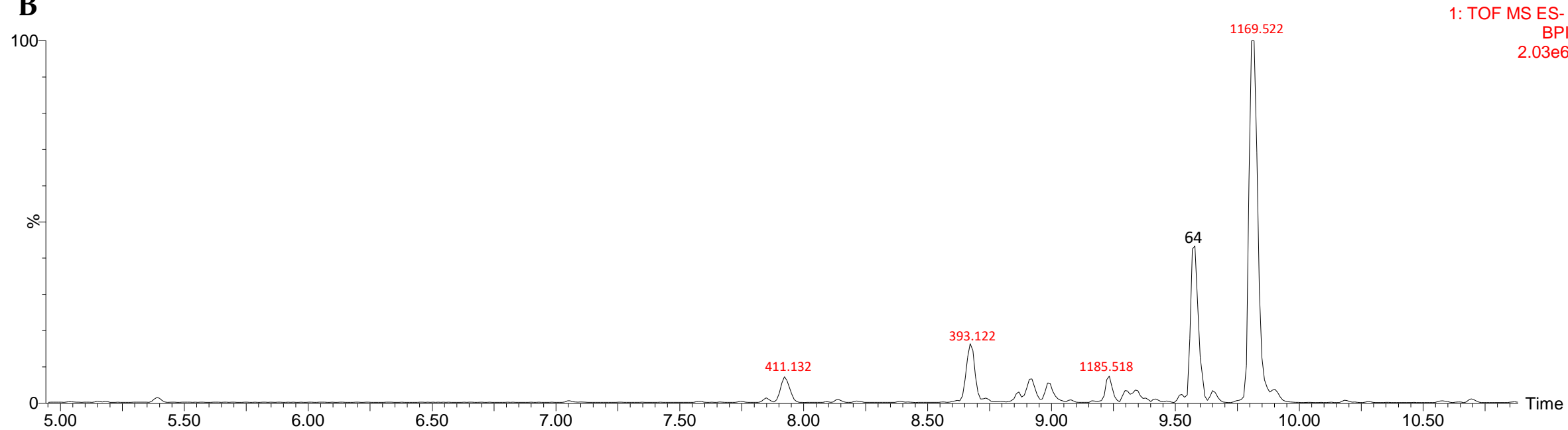


Ripe Bell Pepper

A

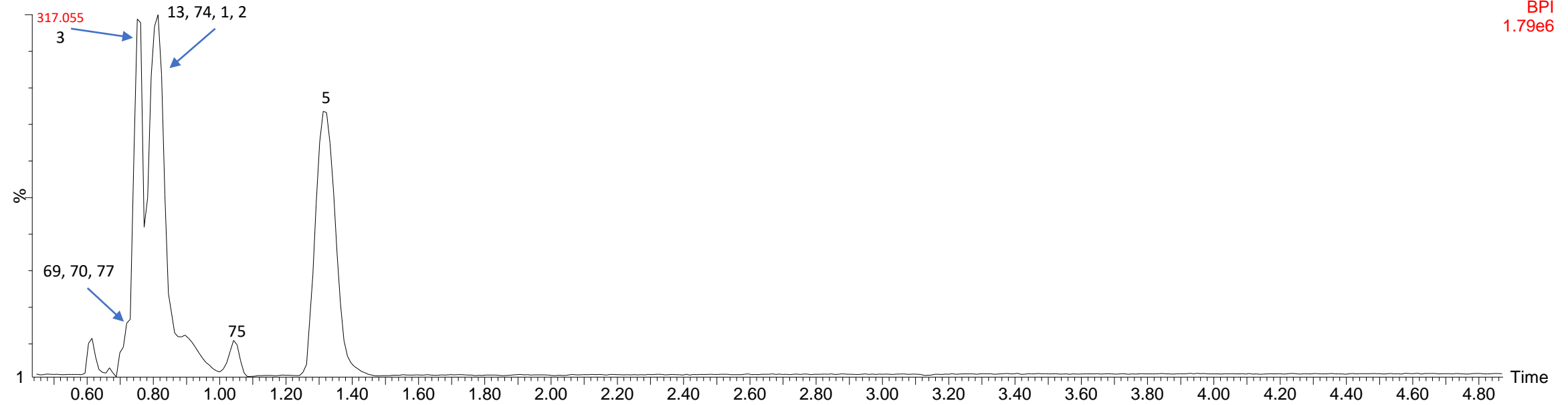


B

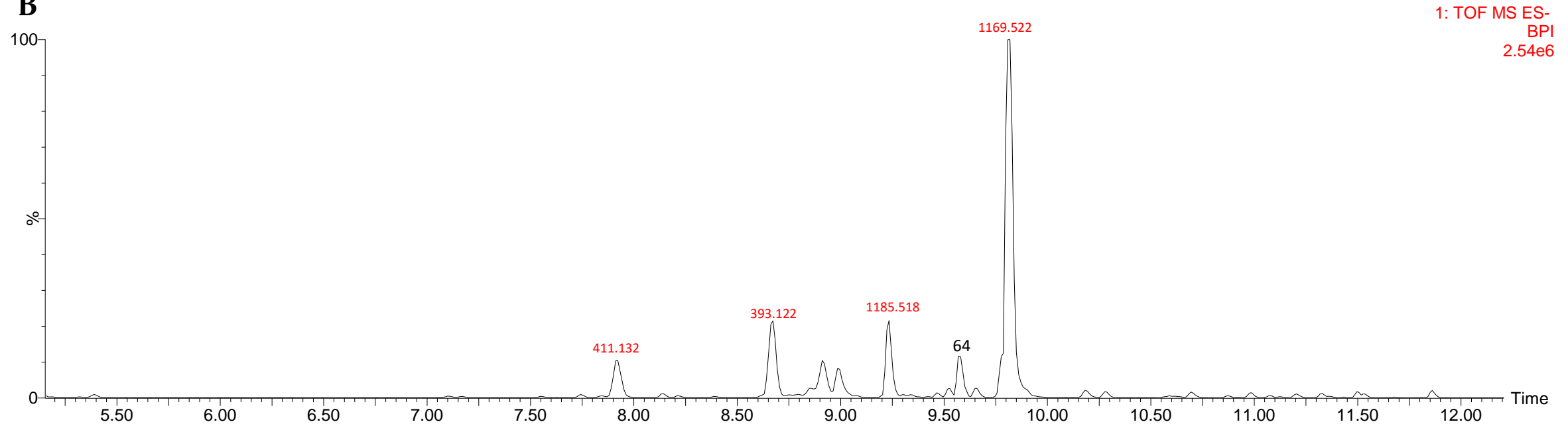


Unripe Bell Pepper

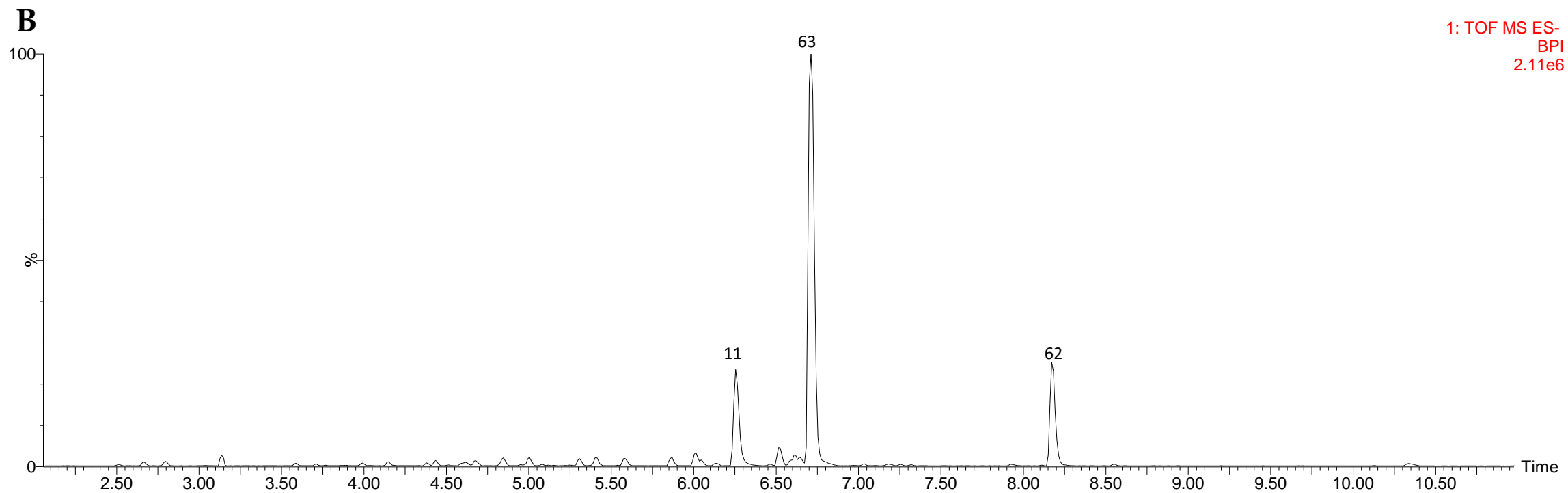
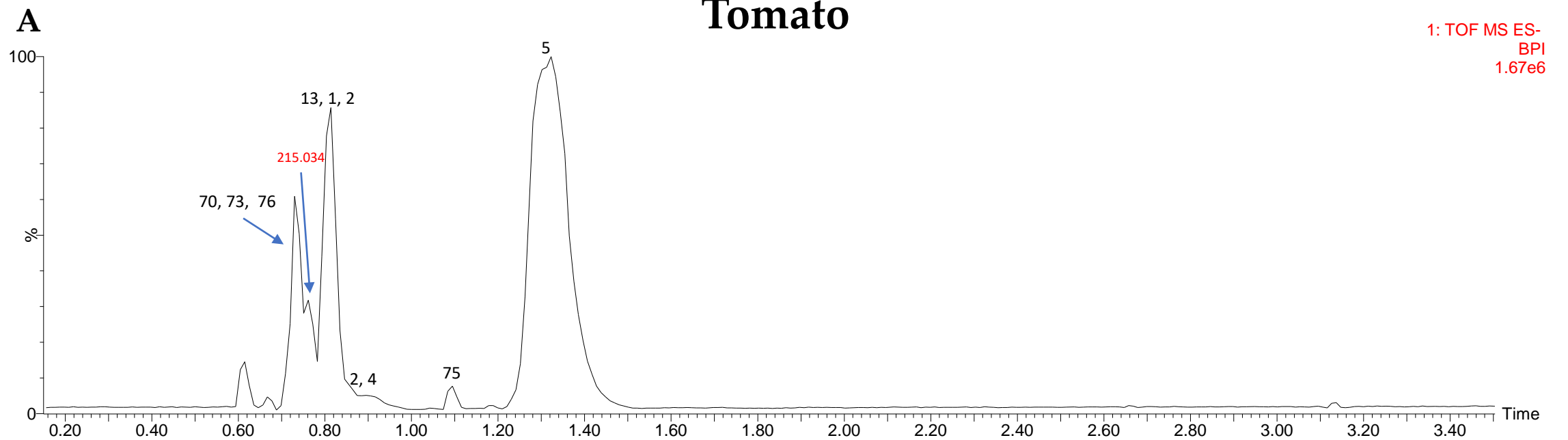
A



B



Tomato



Organ	Sample	Relative content of quinic acid (arbitrary units)	st.dev
Fruit	Kiwifruit	318.396	1.393
Fruit	Unripe green bell pepper	153.364	1.182
Fruit	Fully ripe red bell pepper	143.982	1.785
Fruit	Pear	114.408	1.375
Fruit	Peach	112.130	804
Fruit	Apple cv. Pom Prussian	101.022	1.220
Fruit	Nectarine	98.111	1.769
Fruit	Cherry cv. Black Star	69.258	436
Fruit	Cherry cv. Roana	61.892	787
Fruit	Tomato	59.250	3.765
Fruit	Apple cv. Golden	44.845	2.194
Leaves	Red chicory	31.561	1.646
Shoot	Fennel	25.108	1.458
Tap root	Carrot	16.400	549
Leaves	Lettuce	3.099	150
Bulb	Onion	641	83
Bulb	Shallot	610	26
Fruit	Cucumber	196	170

Comparison of relative content of quinic acid in all the sample, +/- standard deviation. The relative content is extrapolated from UPLC-MS raw data, is expressed in arbitrary units (i.e. area of the extracted peak of quinic acid, referred to the same amount of juice), and is the average of three independent samples. st.dev= standard deviation