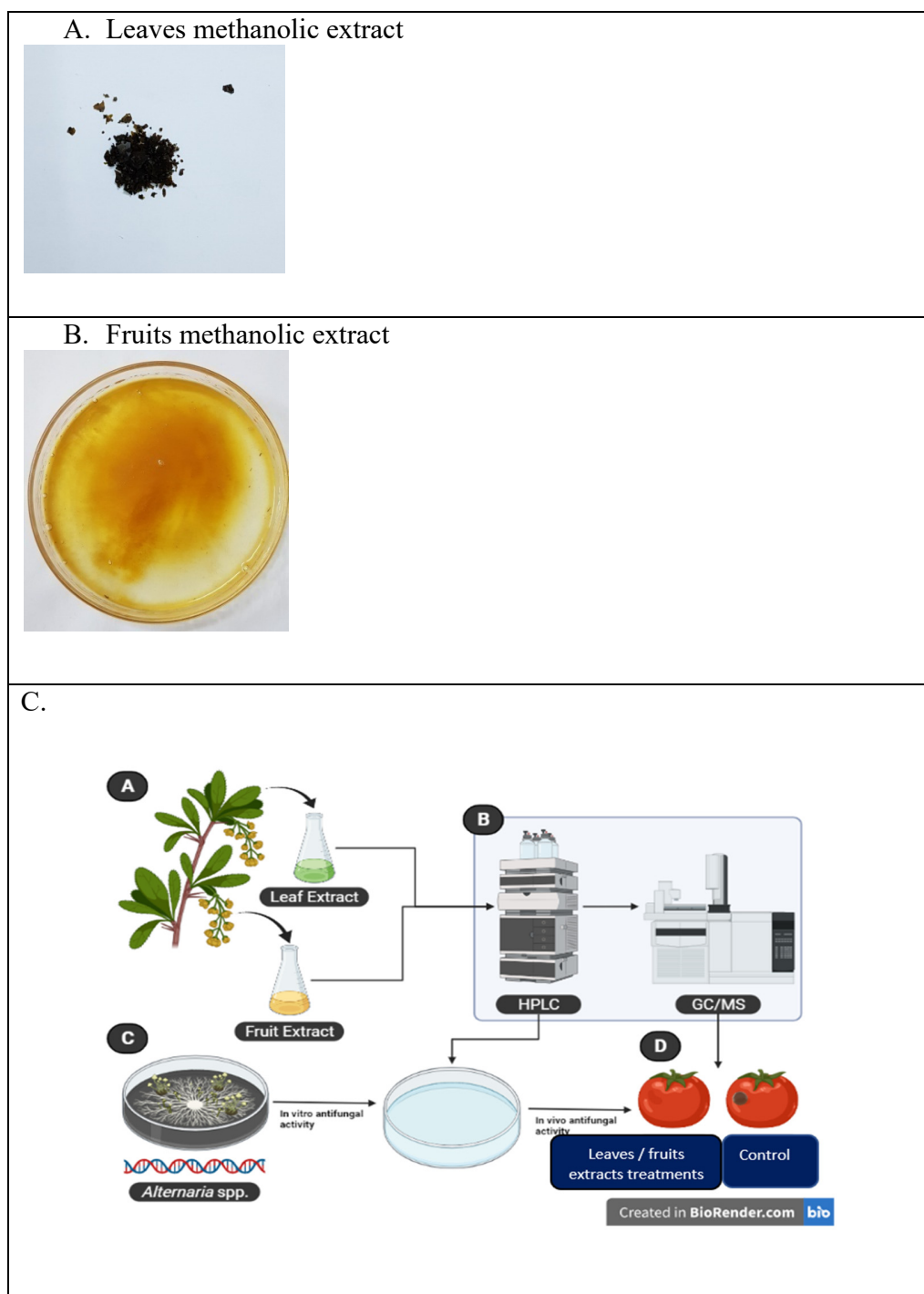
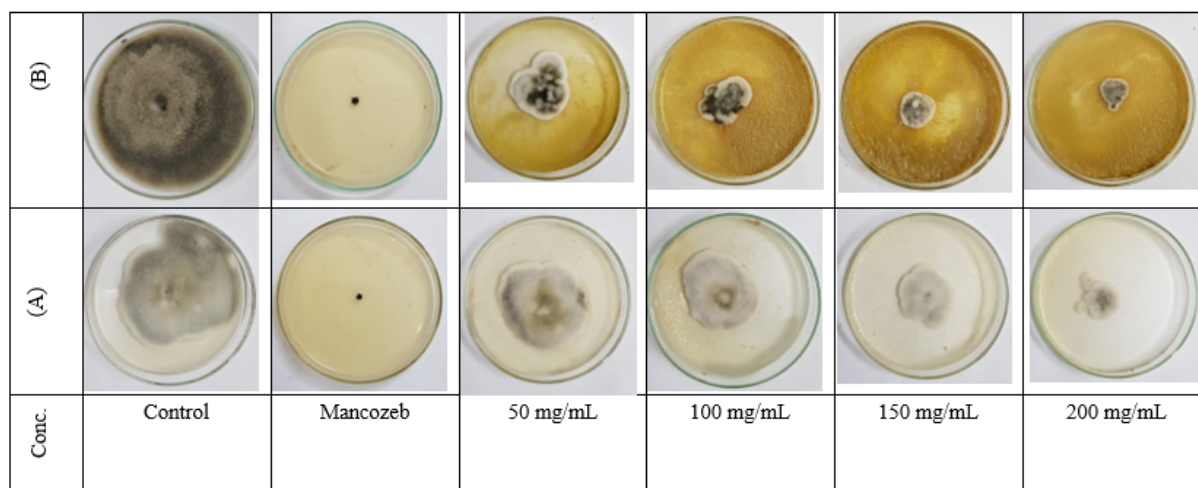


**Supplementary Materials:**

**Figure S1.** **A.** Leaves methanolic extract, **B.** Fruits methanolic extract of *Ziziphus spina-christi* L and **C.** Graphical abstract of the study.



**Figure S2.** In vitro antifungal activities of methanol leaves and fruits extracts of *Zizyphus spina-christi* L. against (A) *A. alternata* and fruits extract and (B) *A. radicina* and leaves extracts after 10 days of incubation at 28°C. Plates of control (fungus only) and positive control (Mancozeb 3%) are also shown.



**Table S1.** Concentrations of polyphenols standard estimated by HPLC.

| Standard         |               |        |
|------------------|---------------|--------|
|                  | Conc. (µg/ml) | Area   |
| Gallic acid      | 16.8          | 80.43  |
| Chlorogenic acid | 28            | 173.11 |
| Catechin         | 67.5          | 310.33 |
| Methyl gallate   | 10.2          | 373.38 |
| Coffeic acid     | 18            | 233.72 |
| Syringic acid    | 17.2          | 172.47 |
| Pyro catechol    | 29.2          | 217.76 |
| Rutin            | 61            | 239.43 |
| Ellagic acid     | 34.3          | 128.65 |
| Coumaric acid    | 13.2          | 464.04 |
| Vanillin         | 12.9          | 289.87 |
| Ferulic acid     | 12.4          | 153.36 |
| Naringenin       | 15            | 143.44 |
| Quercetin        | 12.8          | 88.51  |
| Cinnamic acid    | 5.8           | 298.17 |
| Kaempferol       | 12            | 108.13 |
| Hesperetin       | 13.2          | 204.91 |