

Figure S1

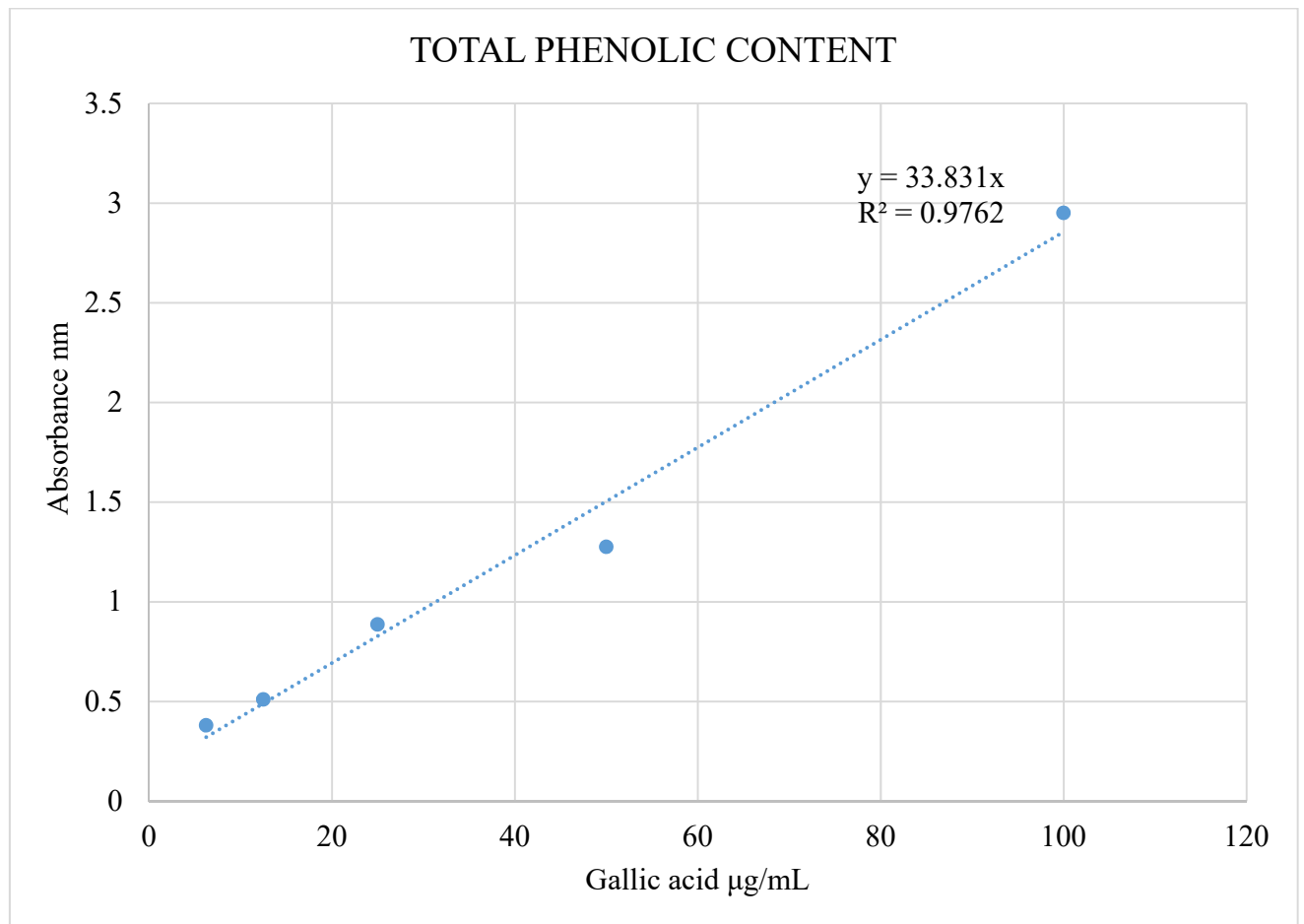
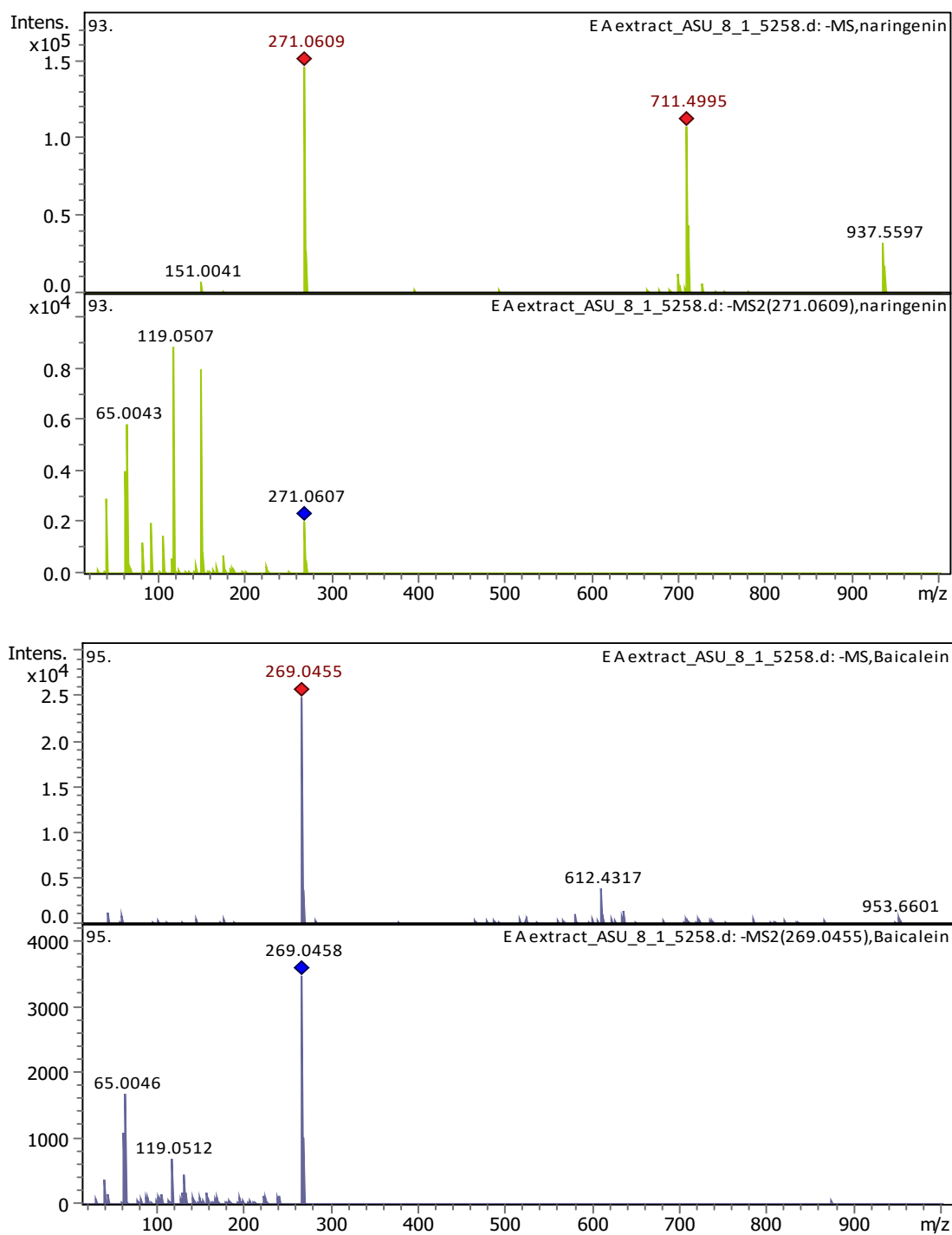
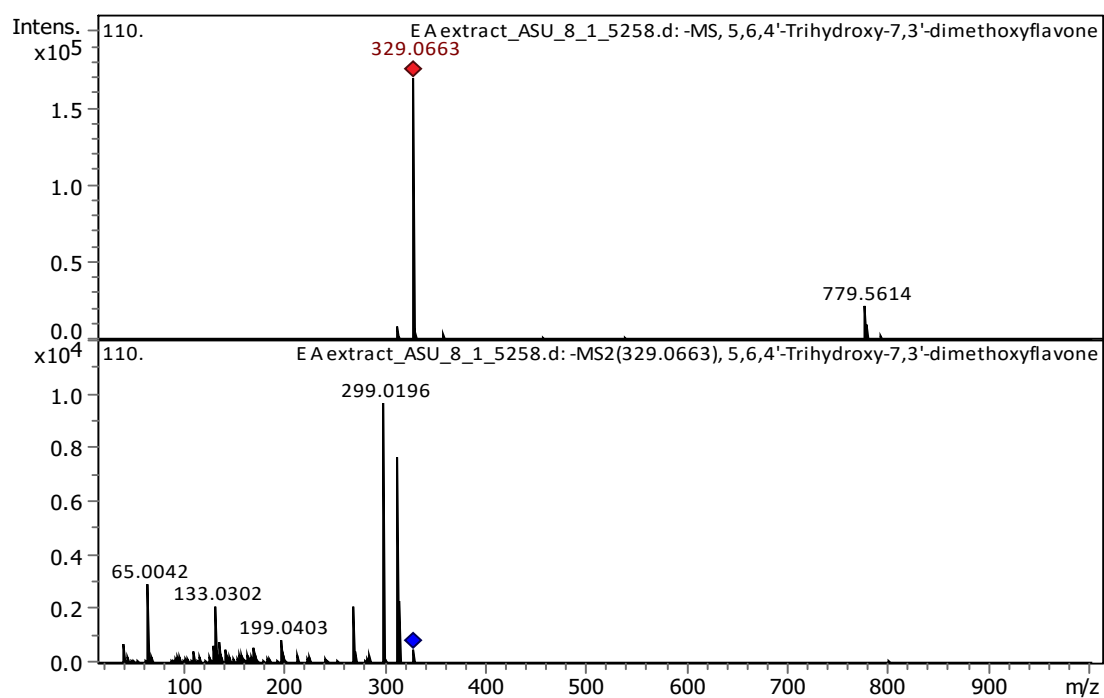
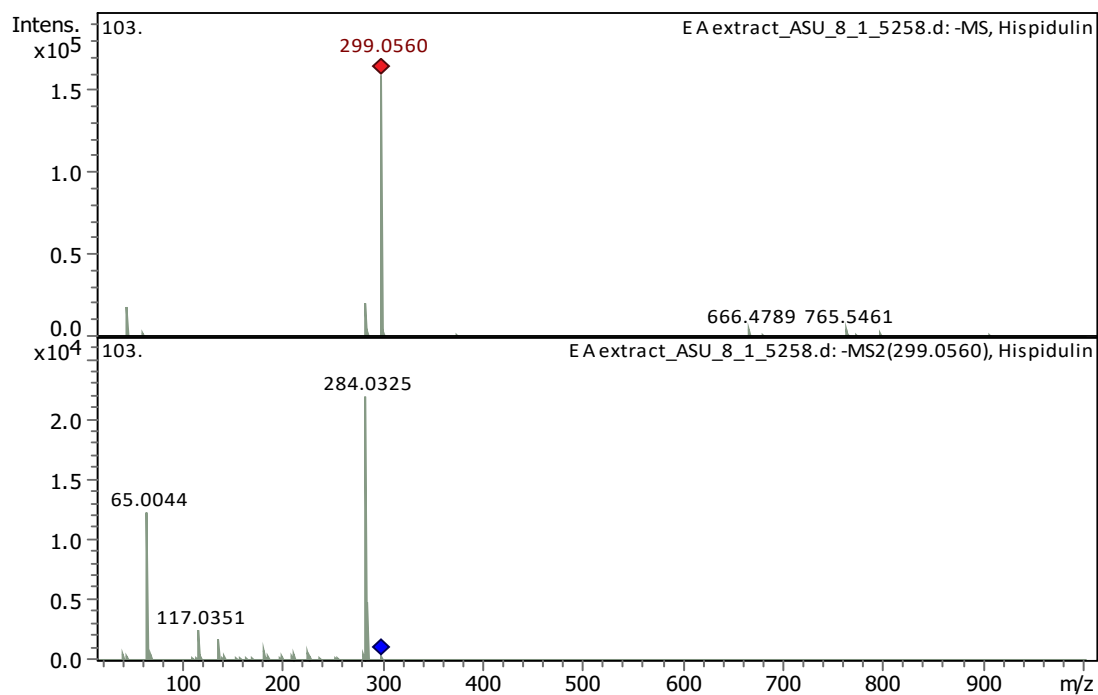


Figure S1: Standard curve for phenolics

Figure S2





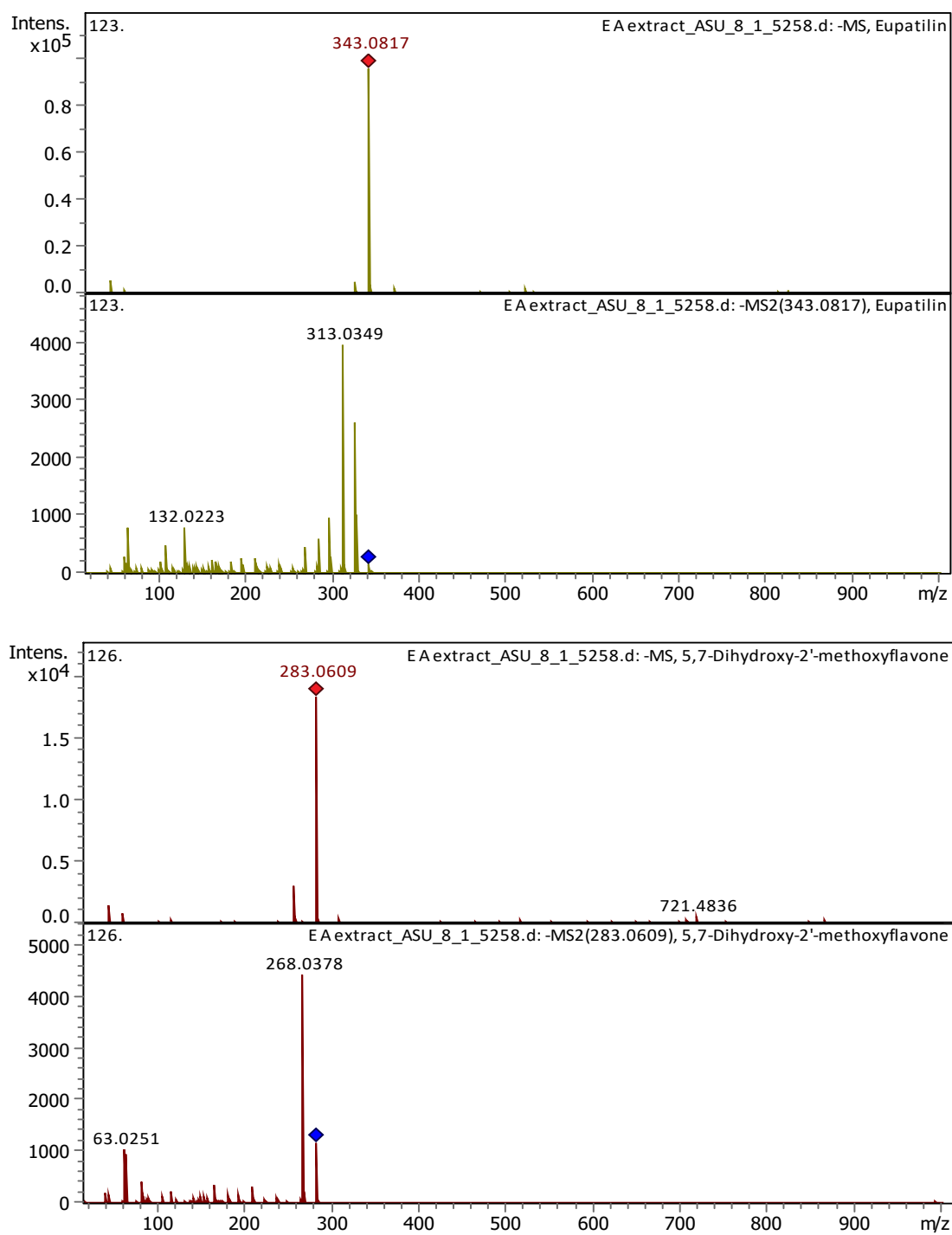


Figure S2: LC-MS Chromatogram obtained from *A. citrodora* ethyl acetate extract

Figure S3

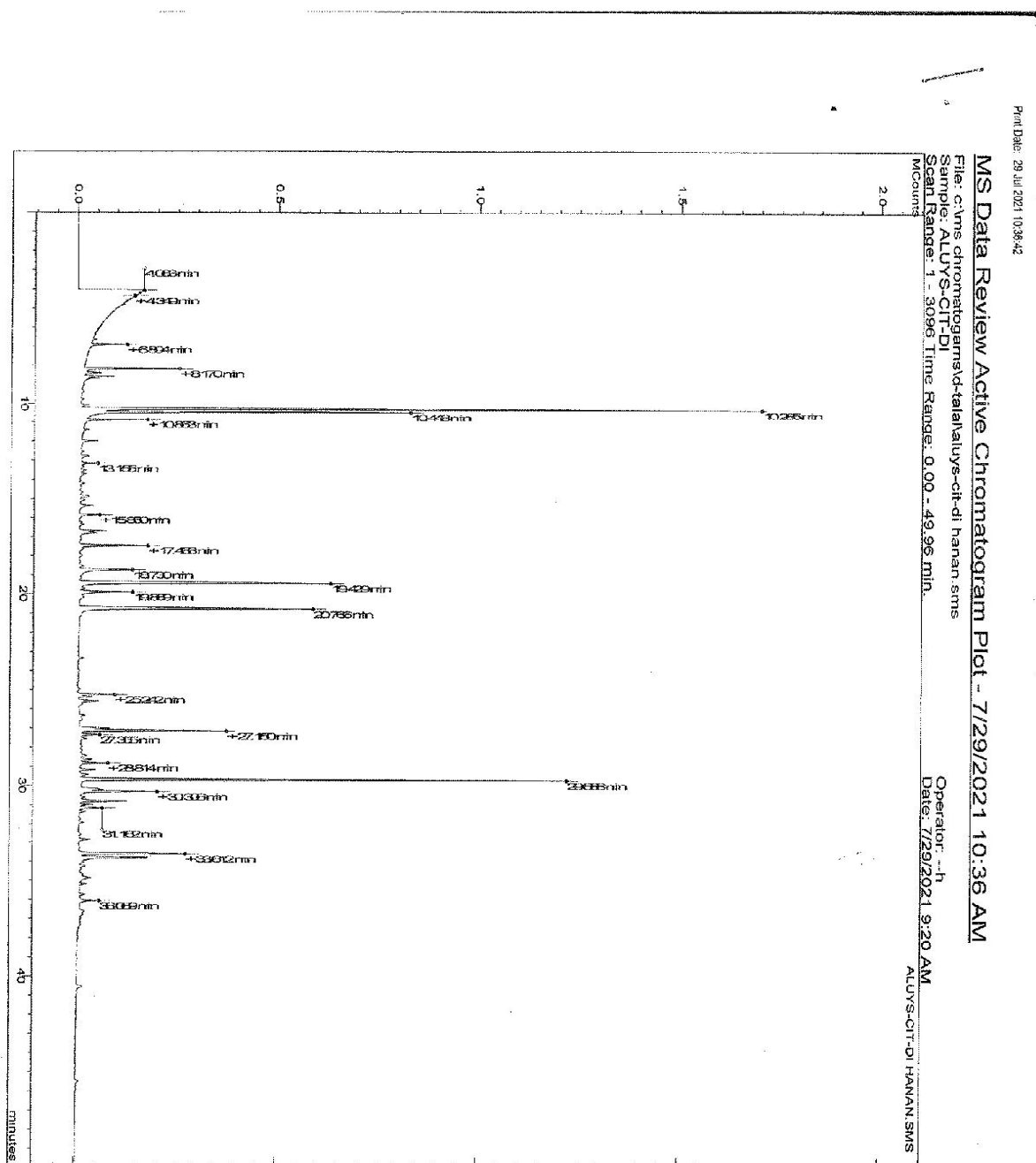


Figure S3: GC-MS analysis of the hydrodistilled oil

Figure S4

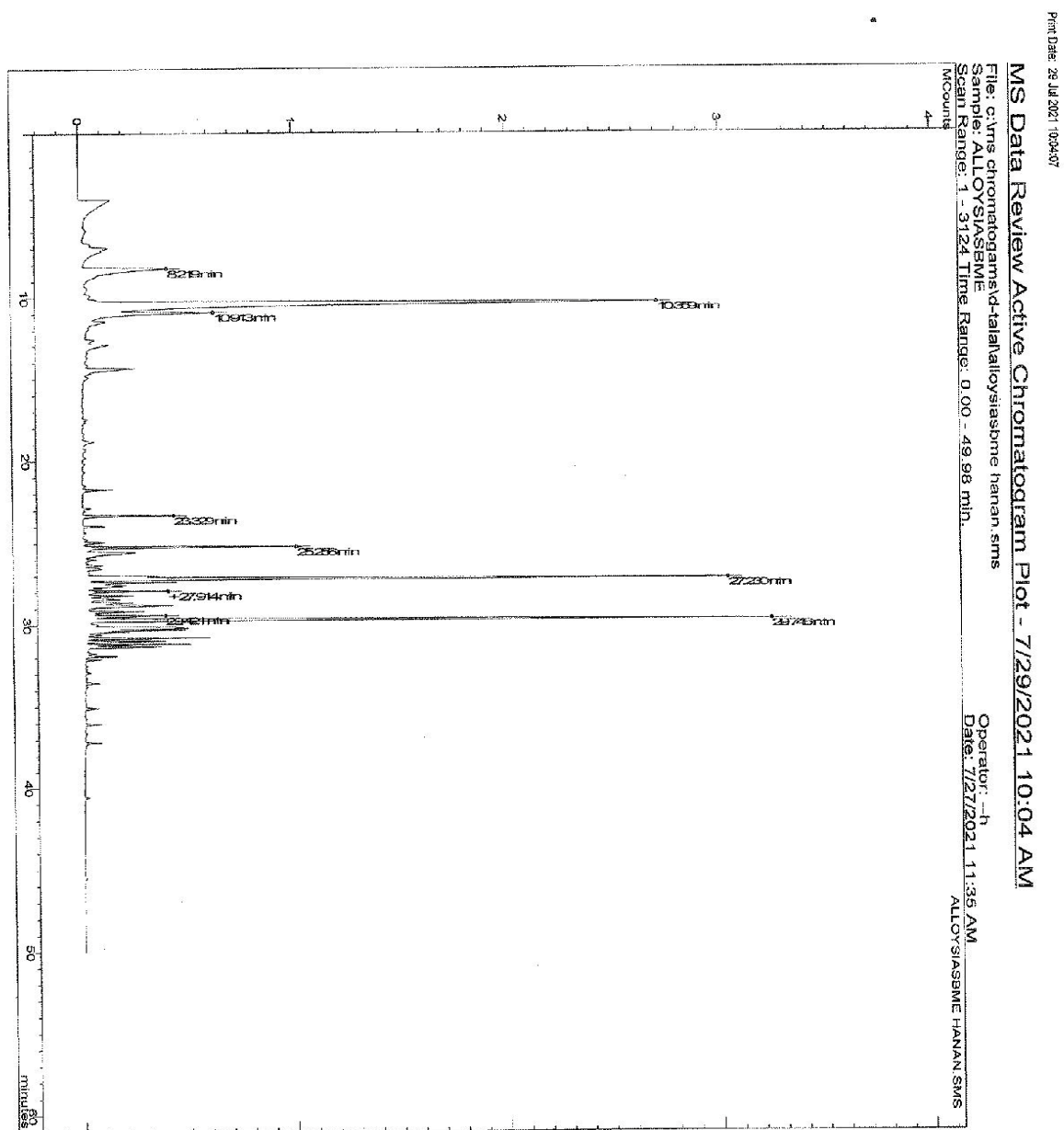


Figure S4: GC-MS analysis of the SPME extracted oil

Figure S5

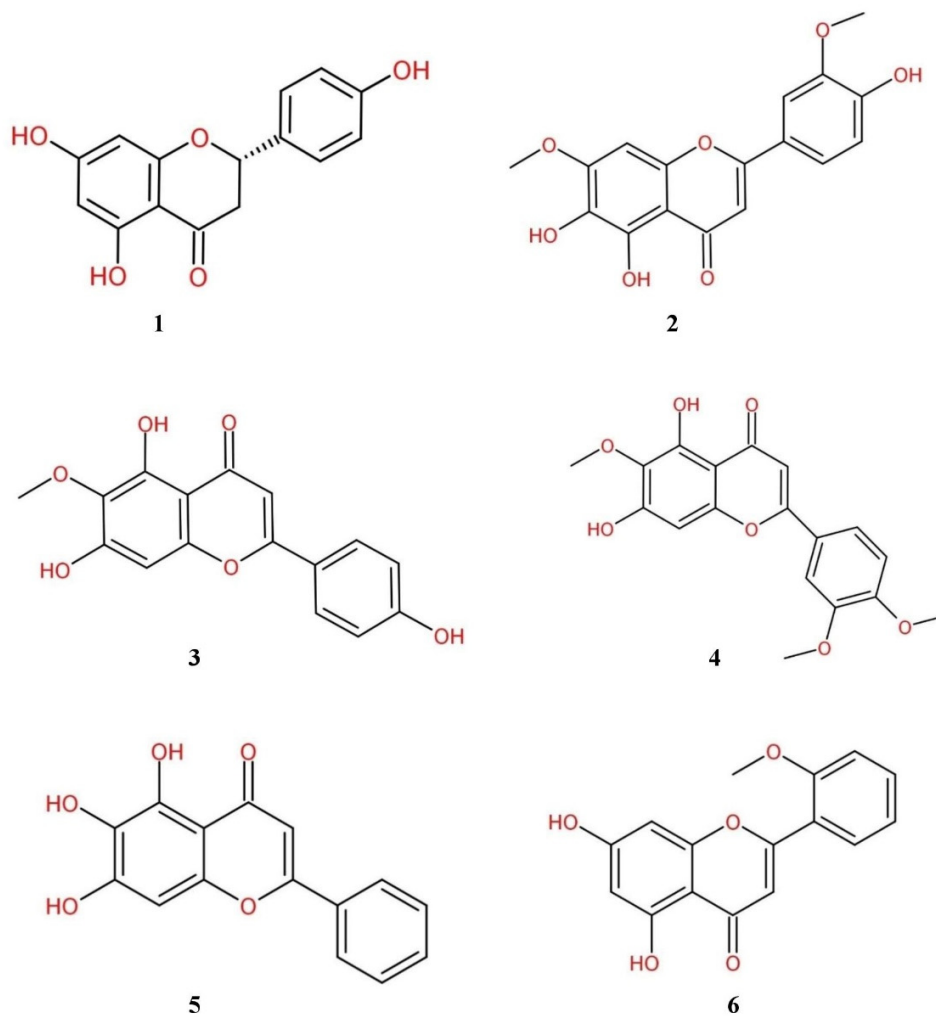


Figure S5: Major compounds identified in ethyl acetate extract of *A. citrodora* using LC-MS. 1: Naringenin, 2: 5-TDMF, 3: Hispidulin, 4: Eupatilin, 5: Baicalein, 6: 2'-Methoxychrysin