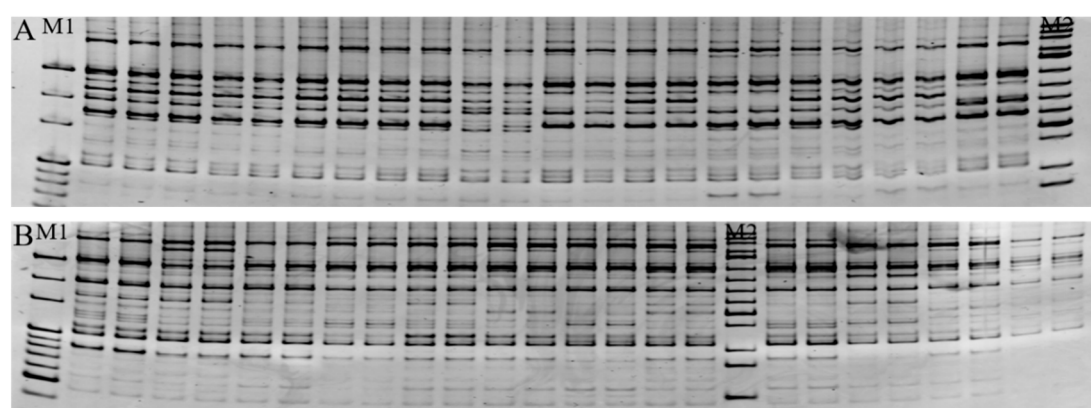


Different primer combinations were used to amplify the same population (*pop* GSKY).

A: ME1/EM3; B: ME1/EM4; M1: 20 bp ladder; M2: 50 bp ladder



Amplification results of different populations using the same primer combinations (ME1/EM4)

A: *pop* LMX; B: *pop* SJC; M1: 20 bp ladder; M2: 50 bp ladder

Figure S1. Examples of PCR amplification results with various primer combinations.