

Study of chemical composition of *Rosa beggeriana* Schrenk's fruits and leaves

Aigerim Aituarova, Galiya E. Zhushupova, Aizhan Zhussupova and Samir A. Ross

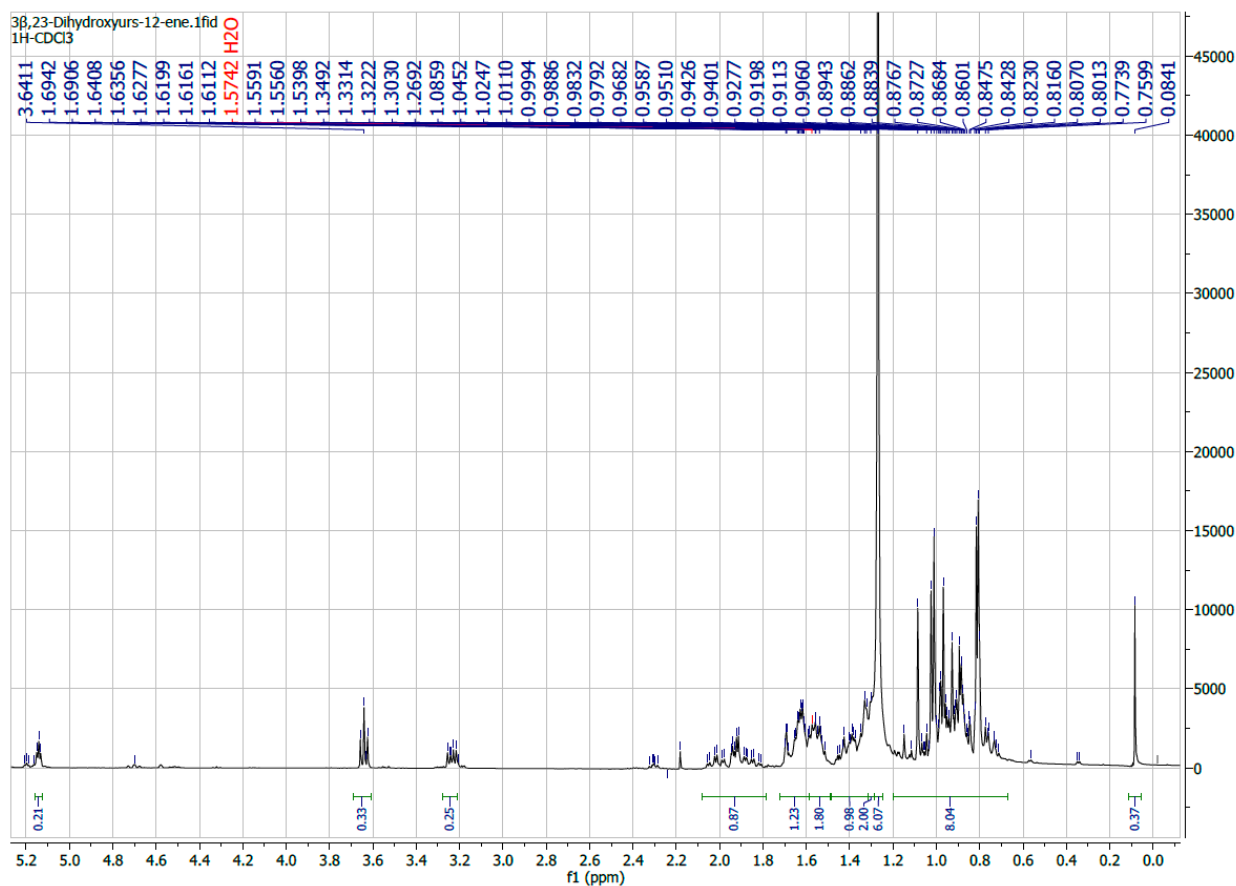


Figure S1. ^1H NMR spectrum of 3 β ,23-Dihydroxyurs-12-ene (1)

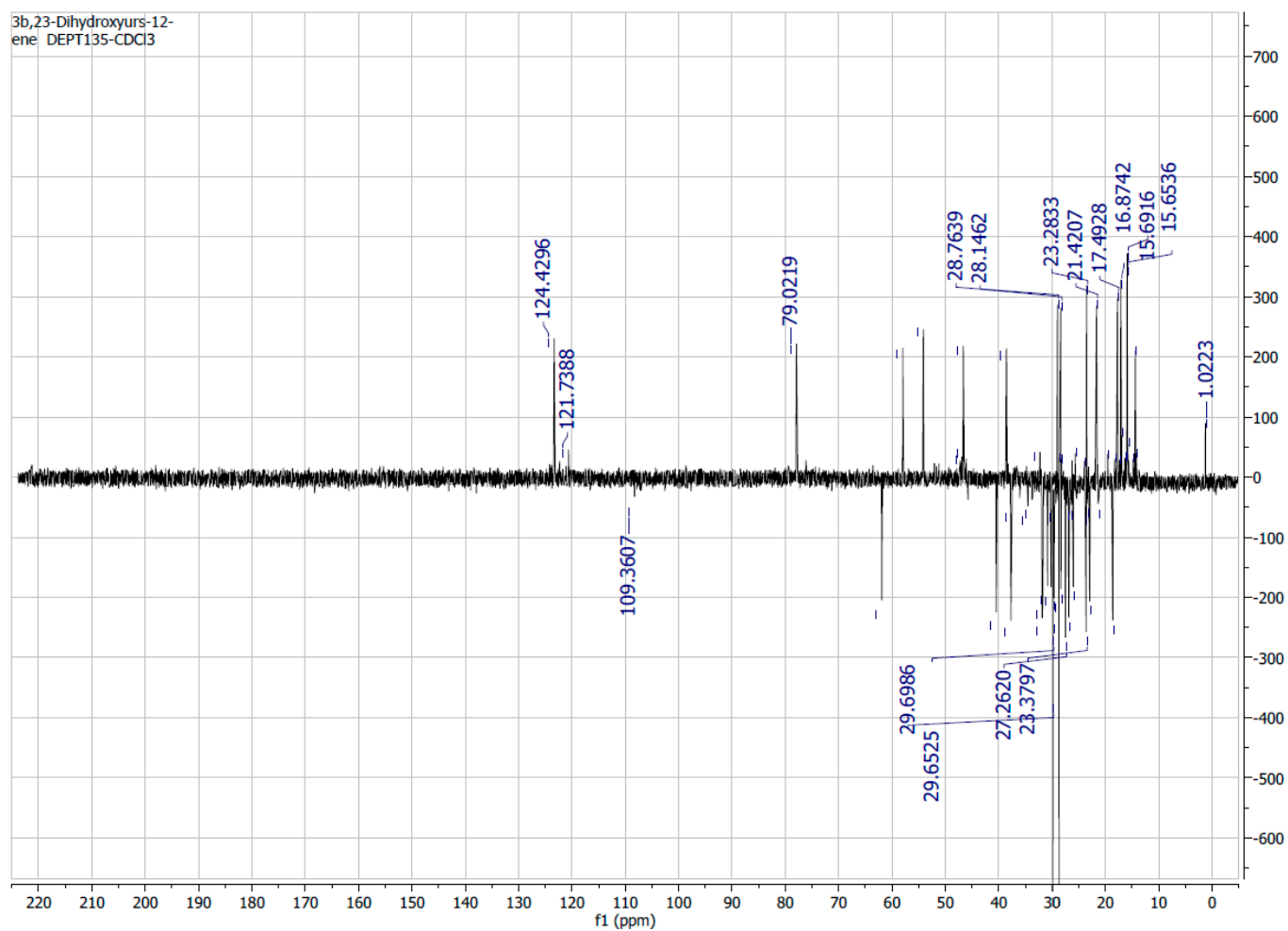


Figure S2. DEPT135 NMR spectrum of 3 β ,23-Dihydroxyurs-12-ene (1)

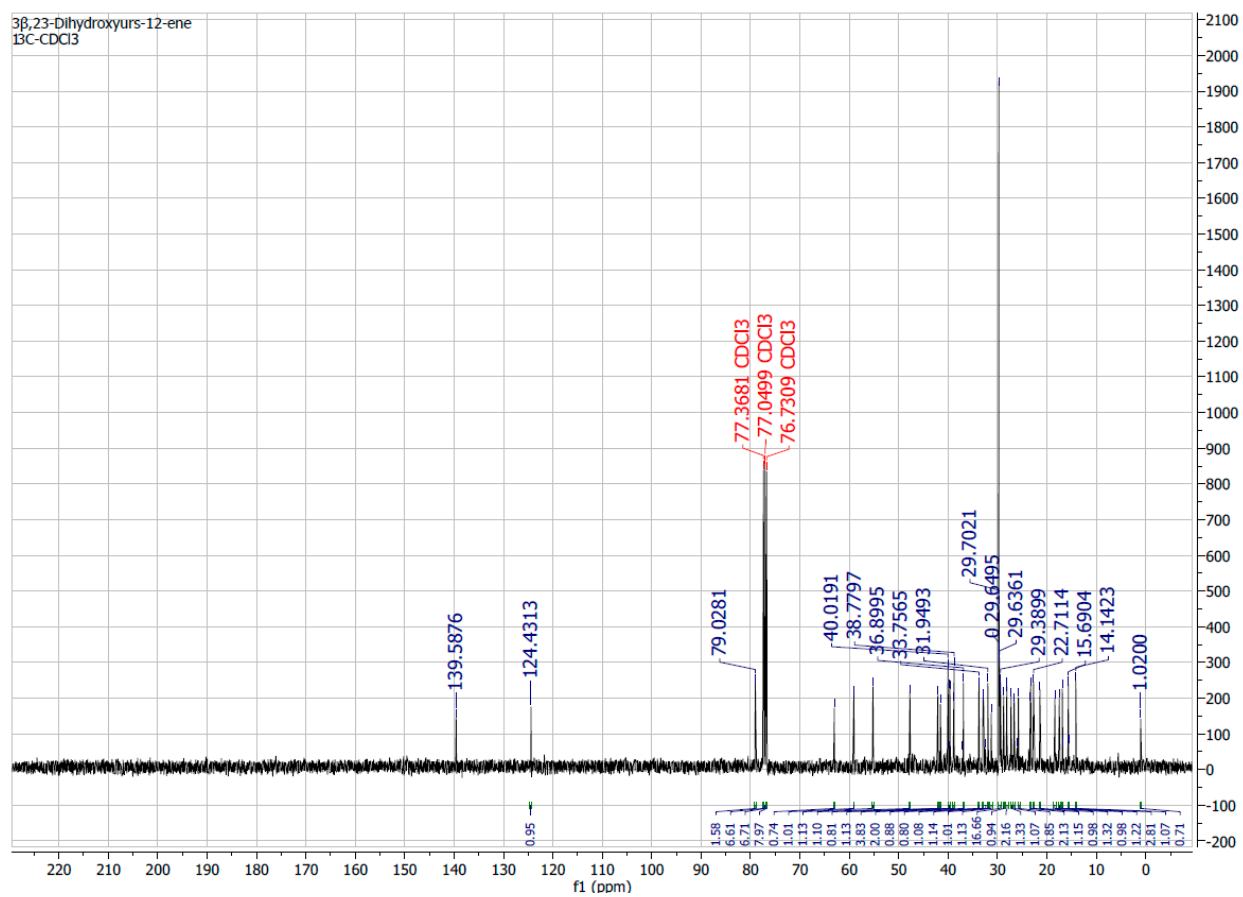


Figure S3. ¹³C NMR spectrum of 3 β ,23-Dihydroxyurs-12-ene (1)

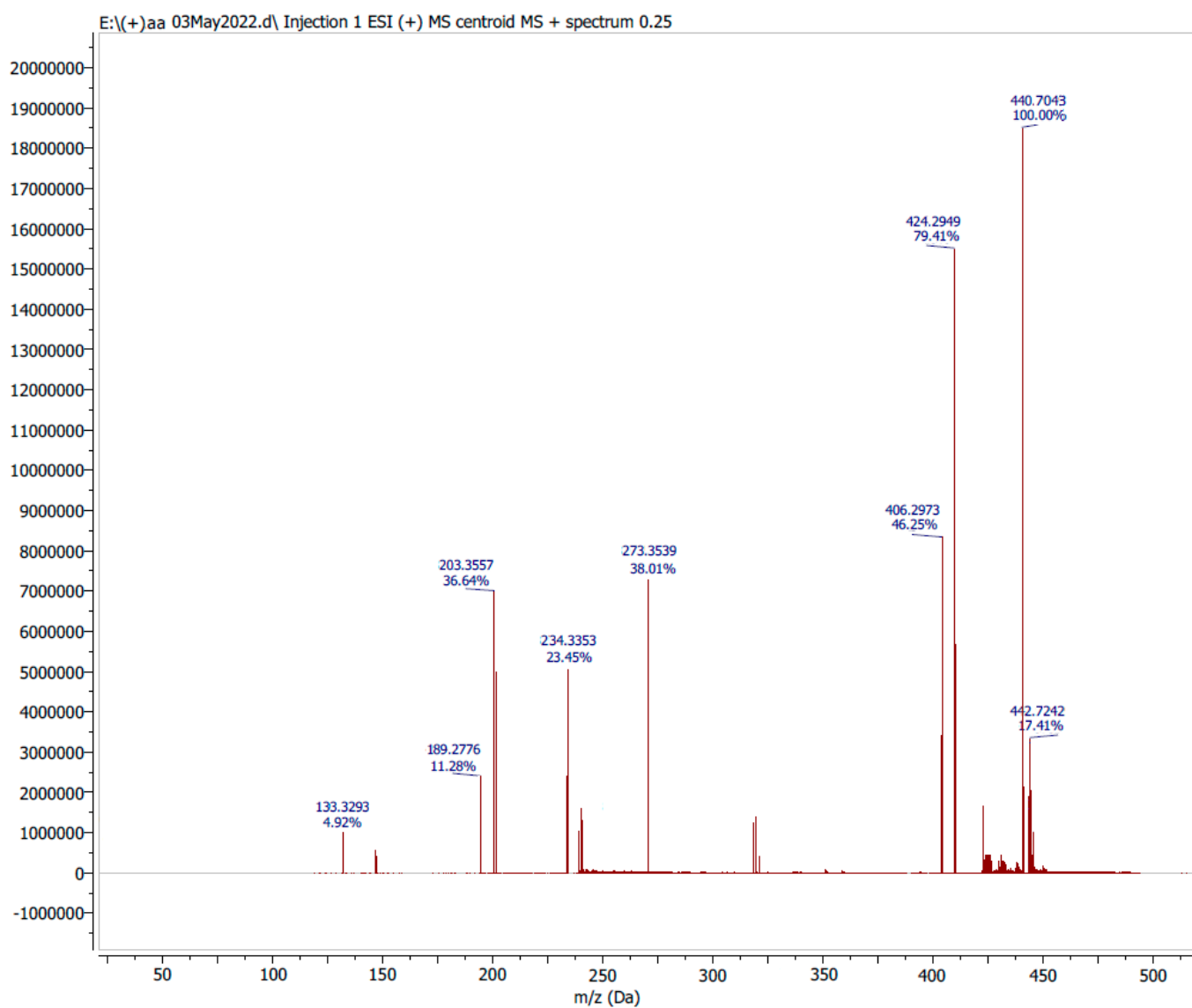


Figure S4. Mass spectrum of 3 β ,23-Dihydroxyurs-12-ene (**1**)

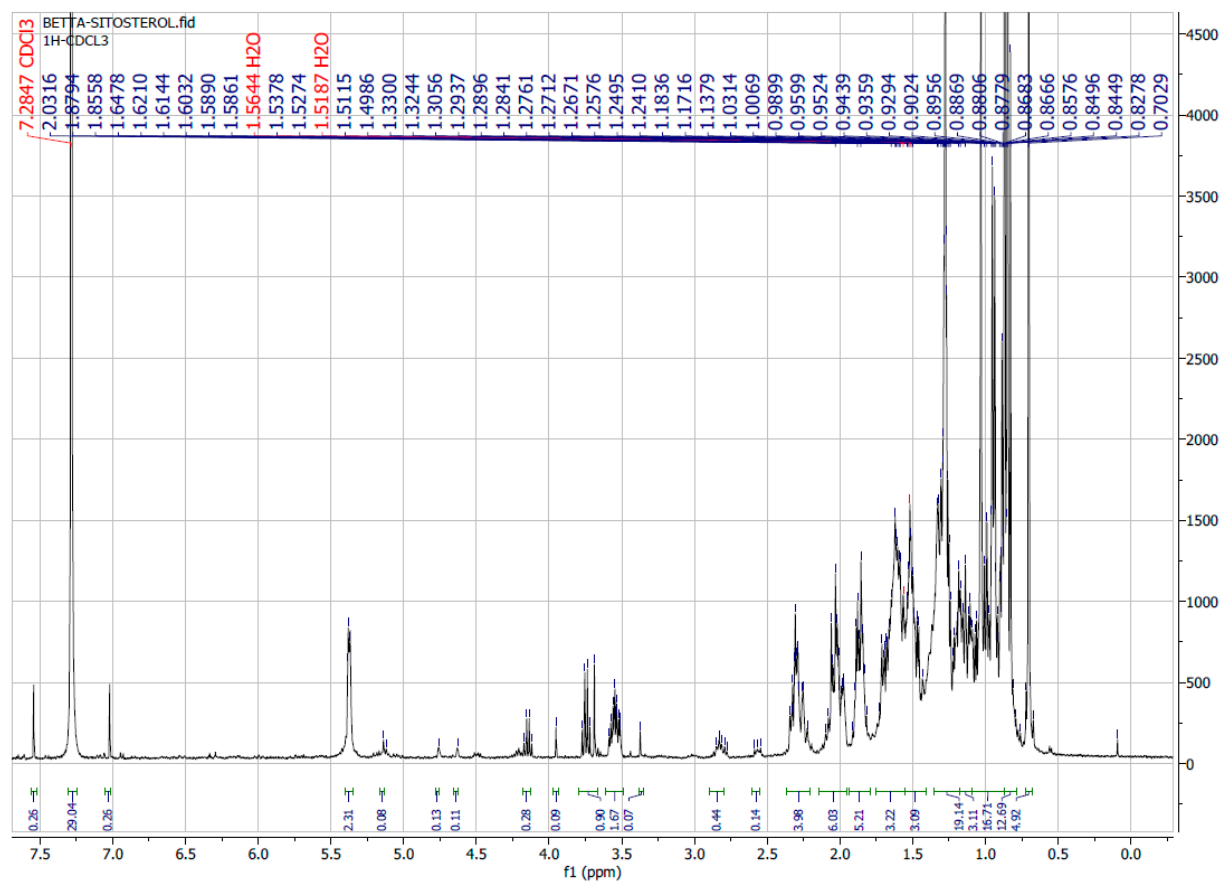


Figure S5. ^1H NMR spectrum of β -sitosterol (2)

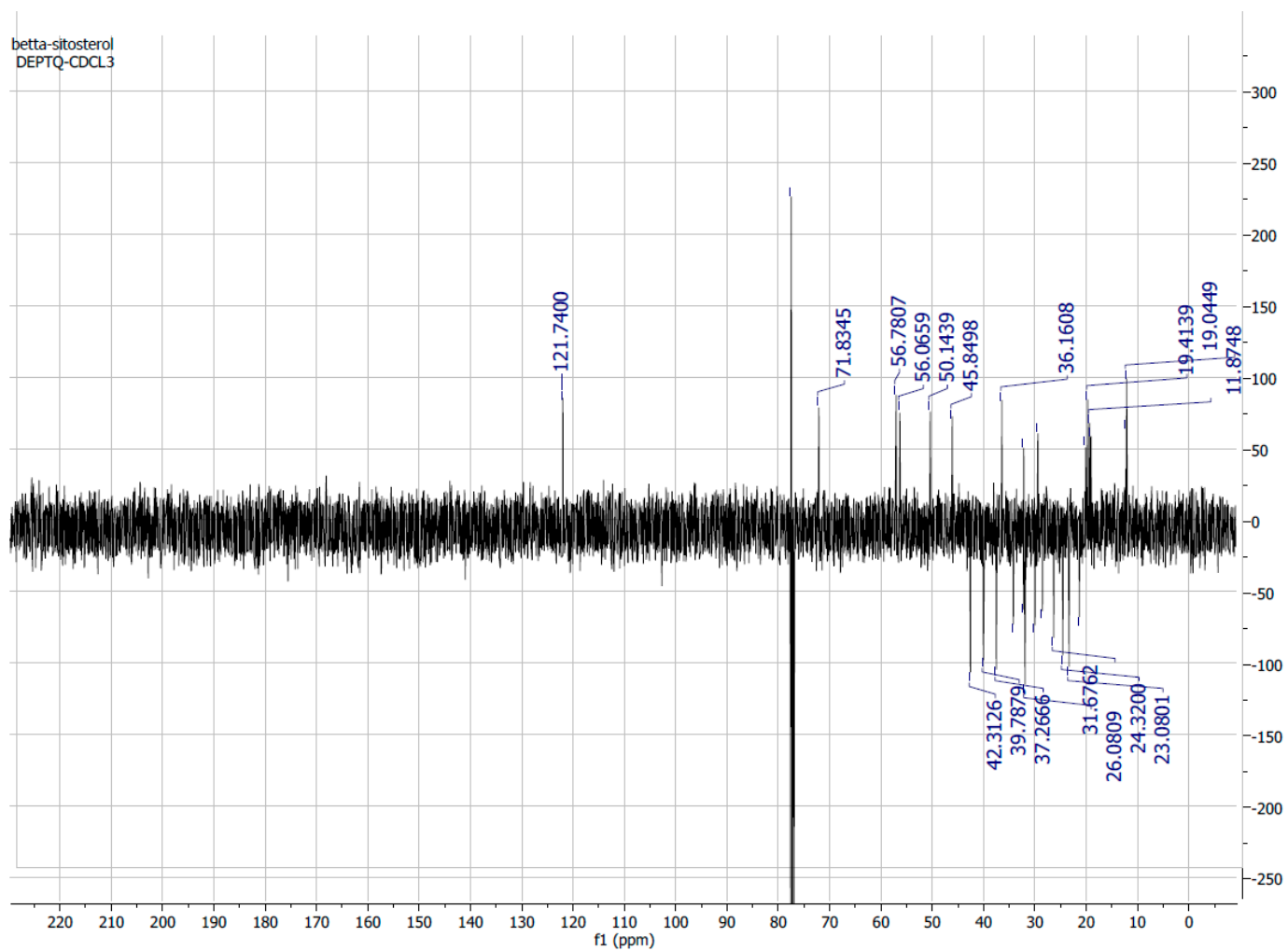


Figure S6. DEPTQ NMR spectrum of β -sitosterol (2)

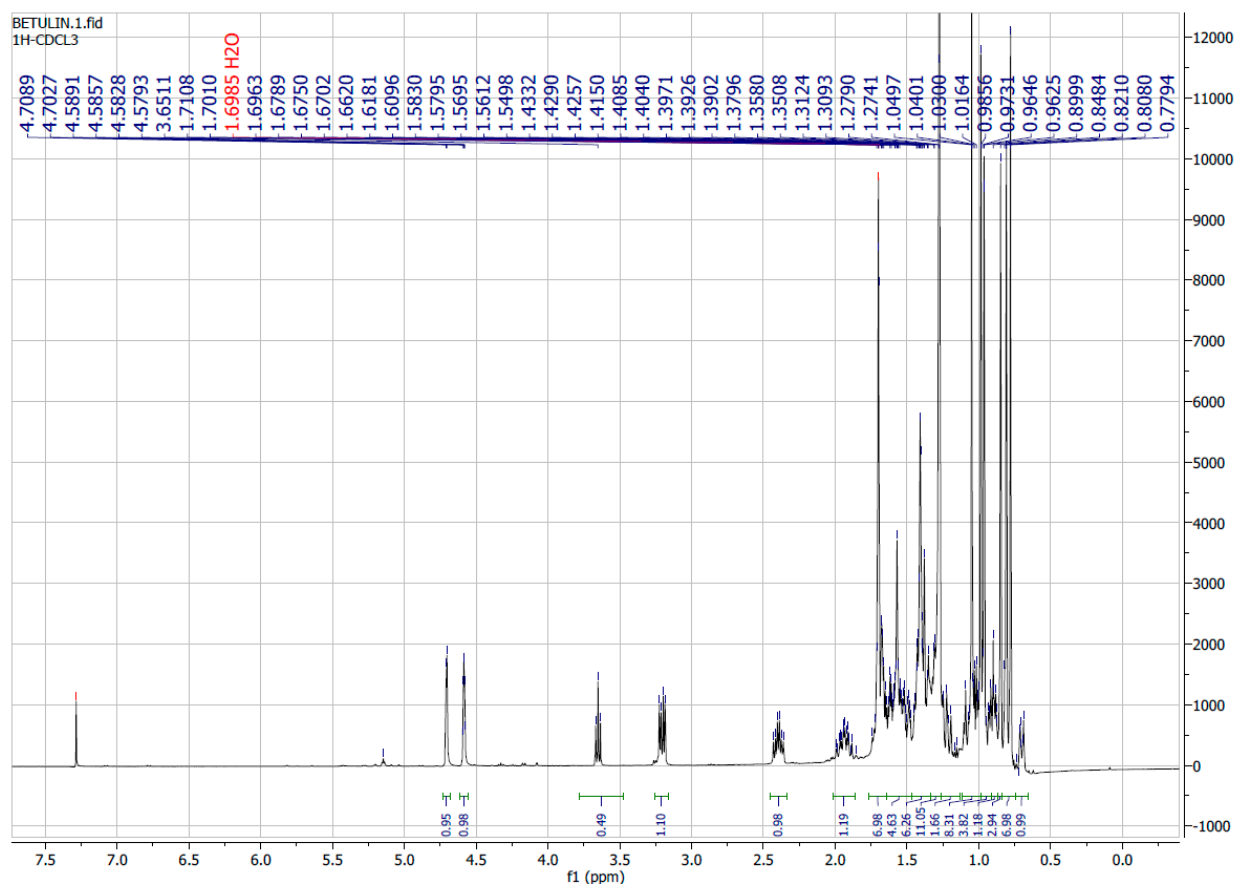


Figure S7. ^1H NMR spectrum of Betulin (3)

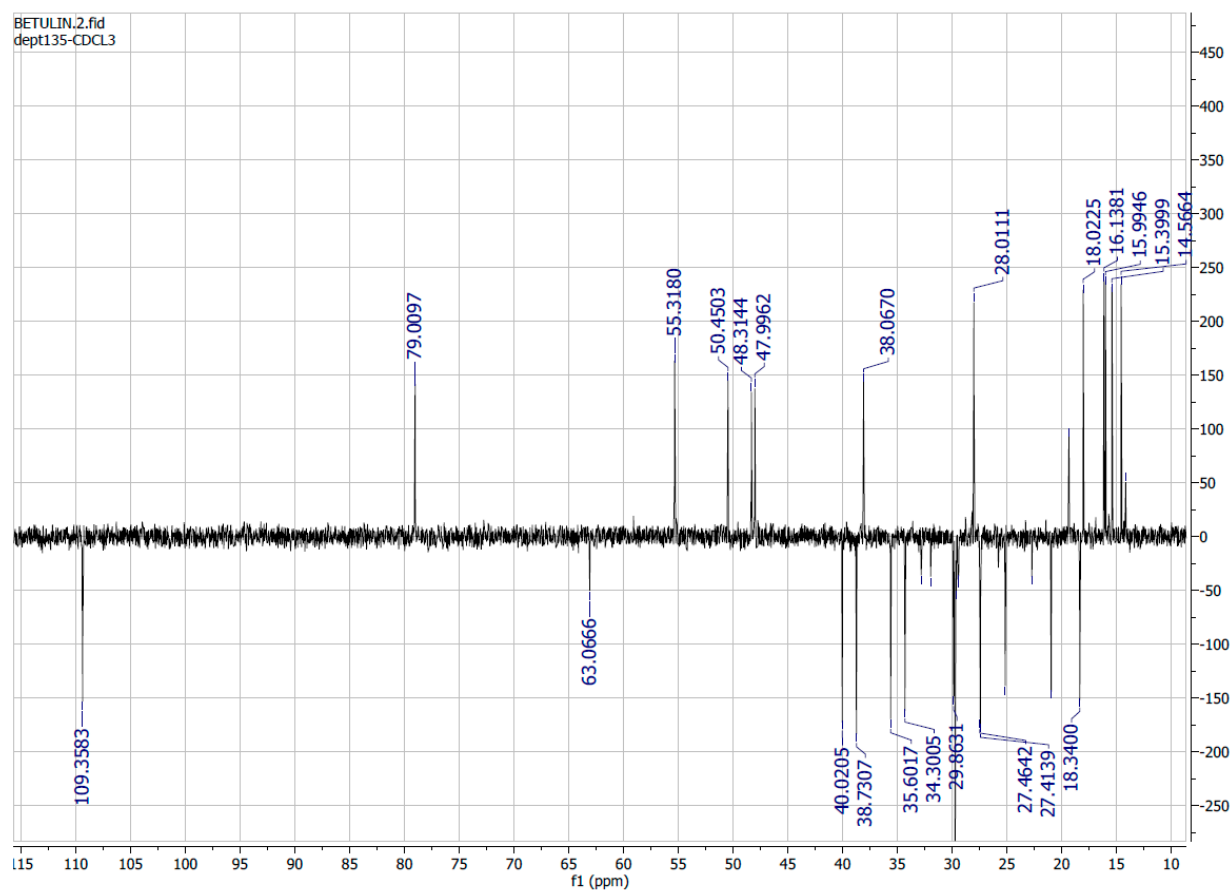


Figure S8. DEPT135 NMR spectrum of Betulin (3)

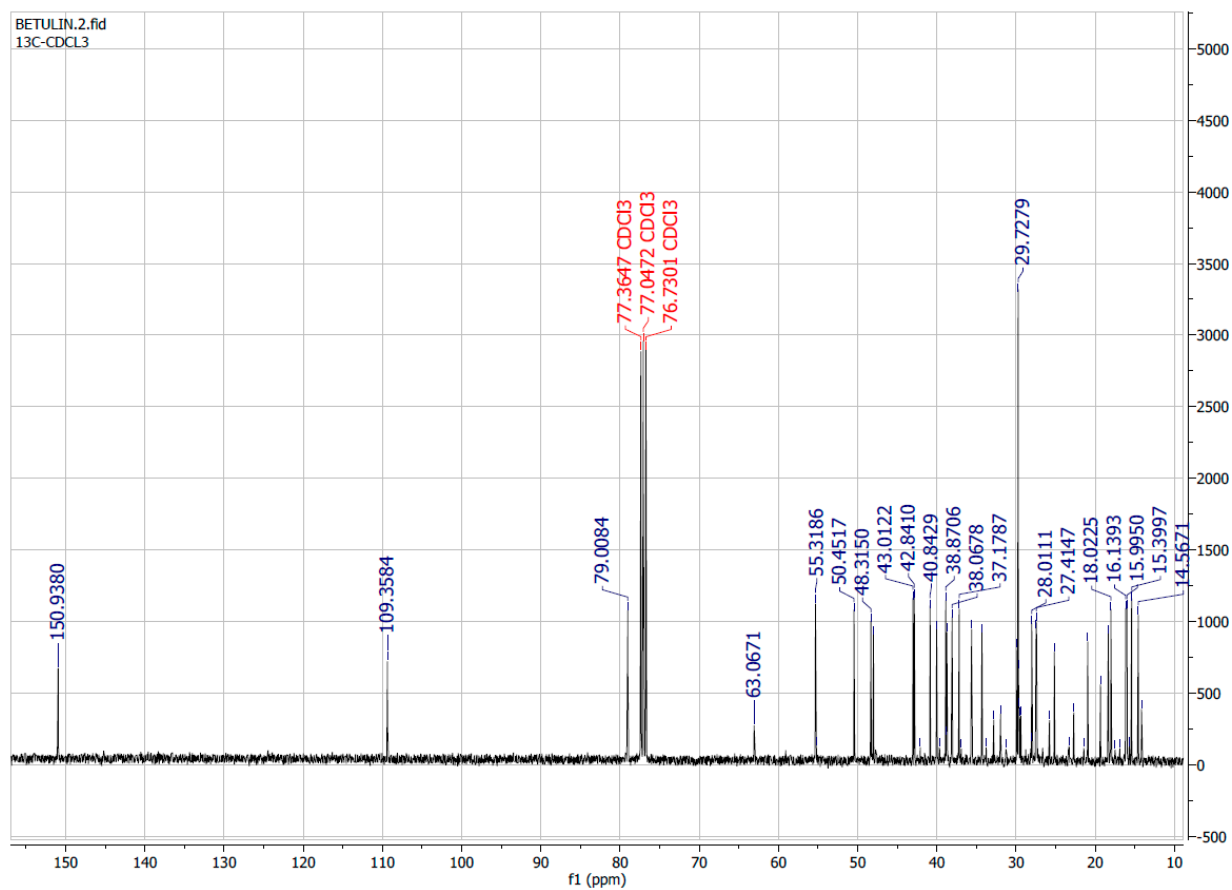


Figure S9. ^{13}C NMR spectrum of Betulin (3)

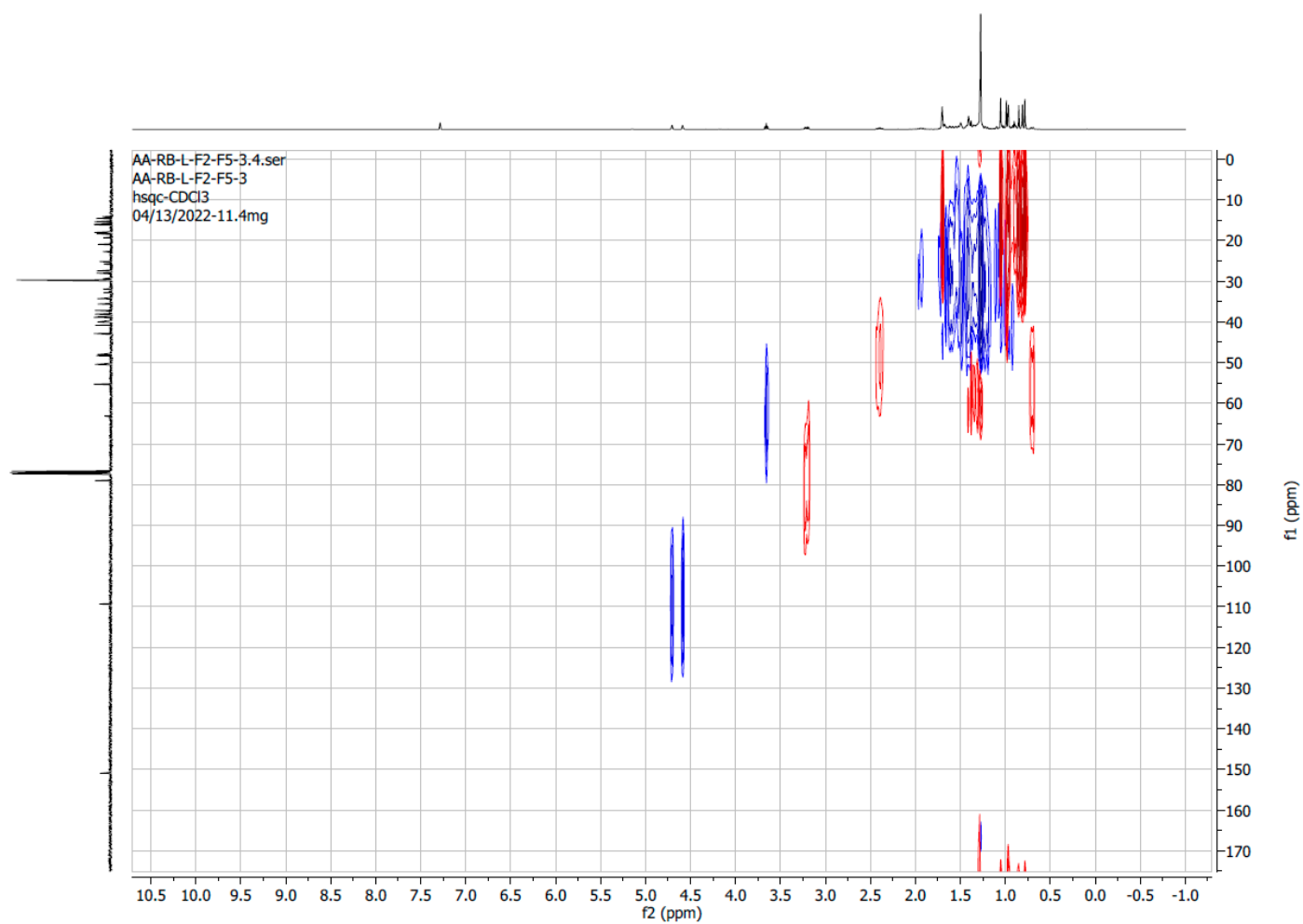


Figure S10. HSQC NMR spectrum of Betulin (3)

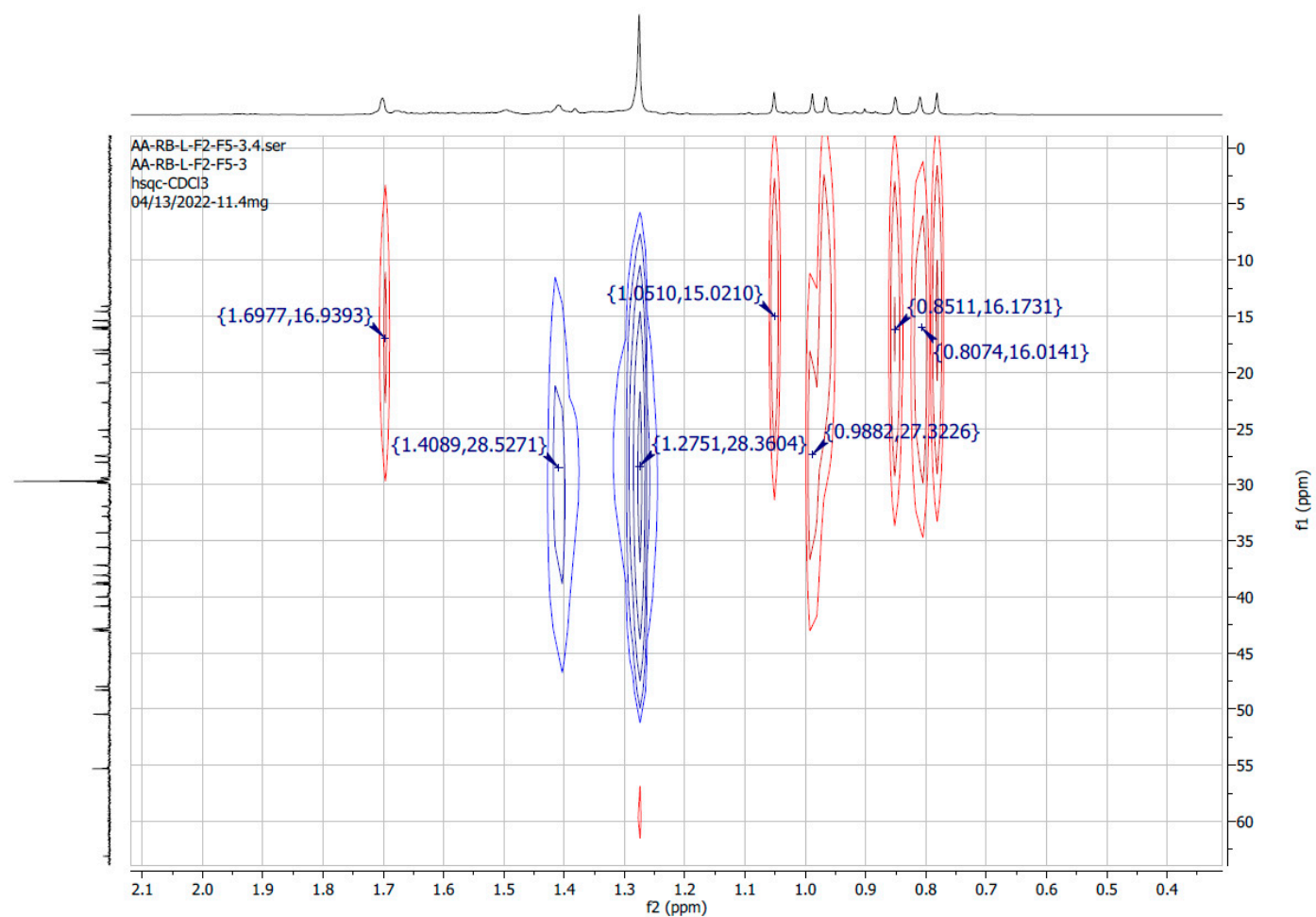


Figure S11. HSQC NMR spectrum of Betulin (3)

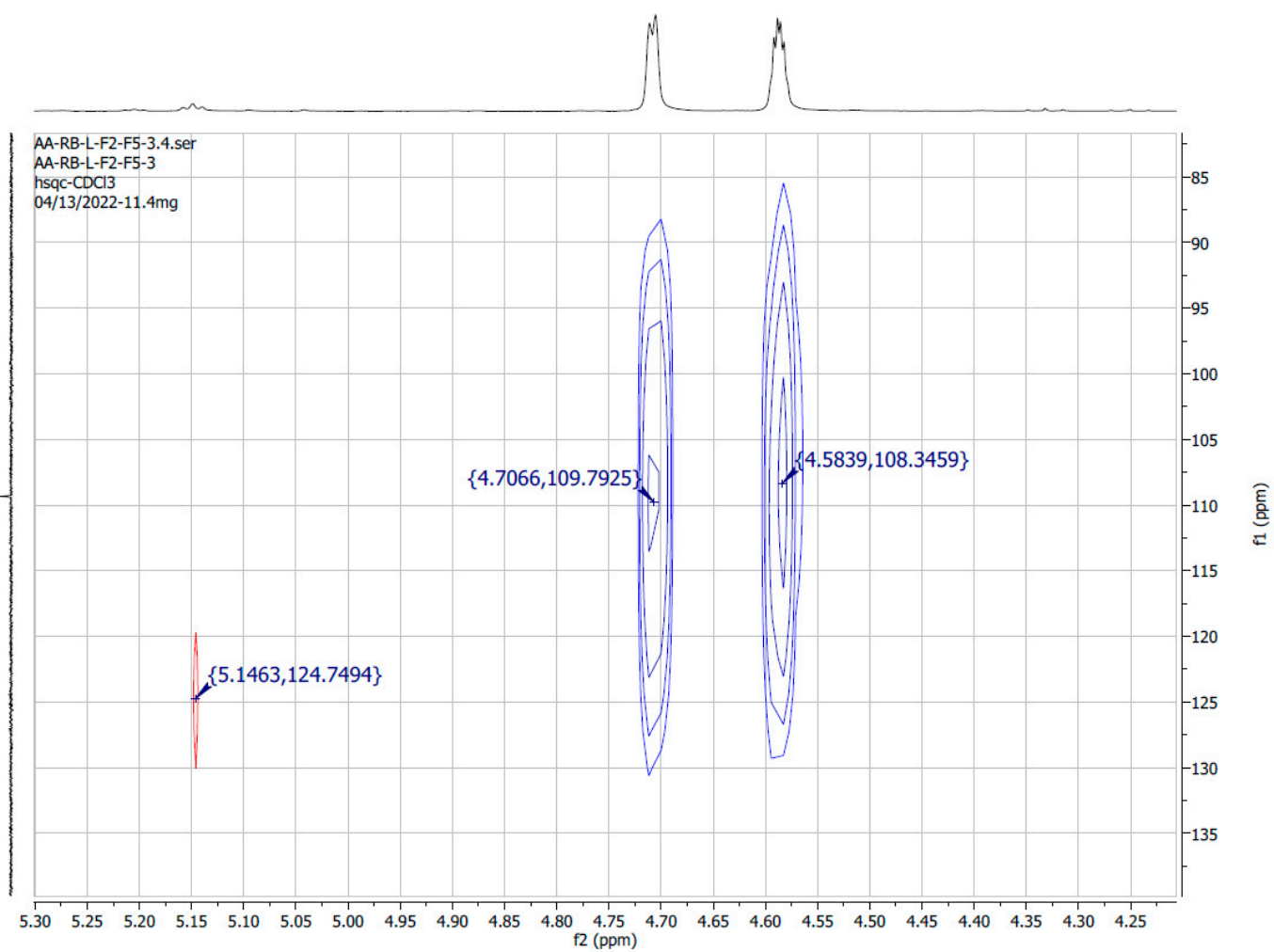


Figure S12. HSQC NMR spectrum of Betulin (3)

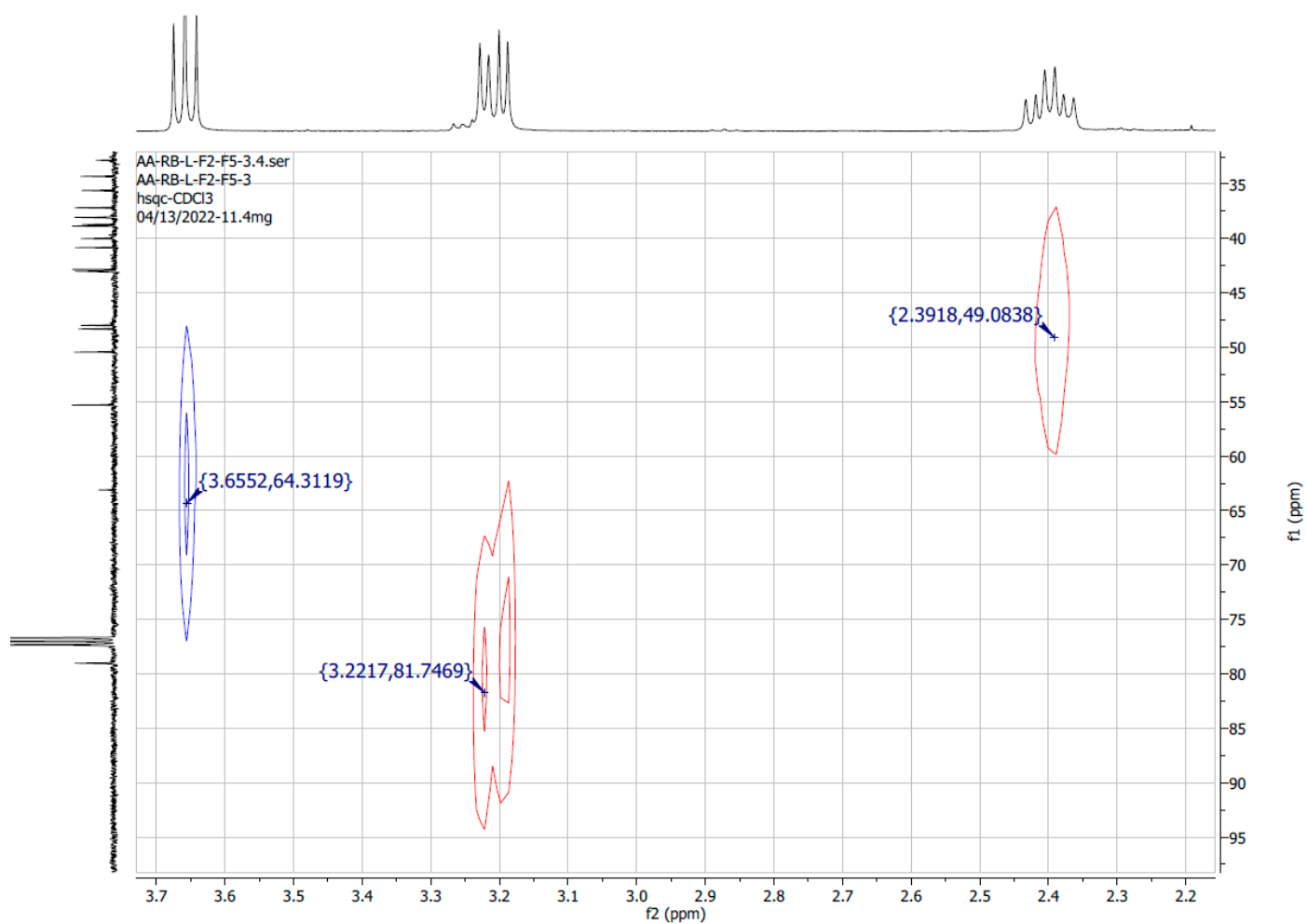


Figure S13. HSQC NMR spectrum of Betulin (3)

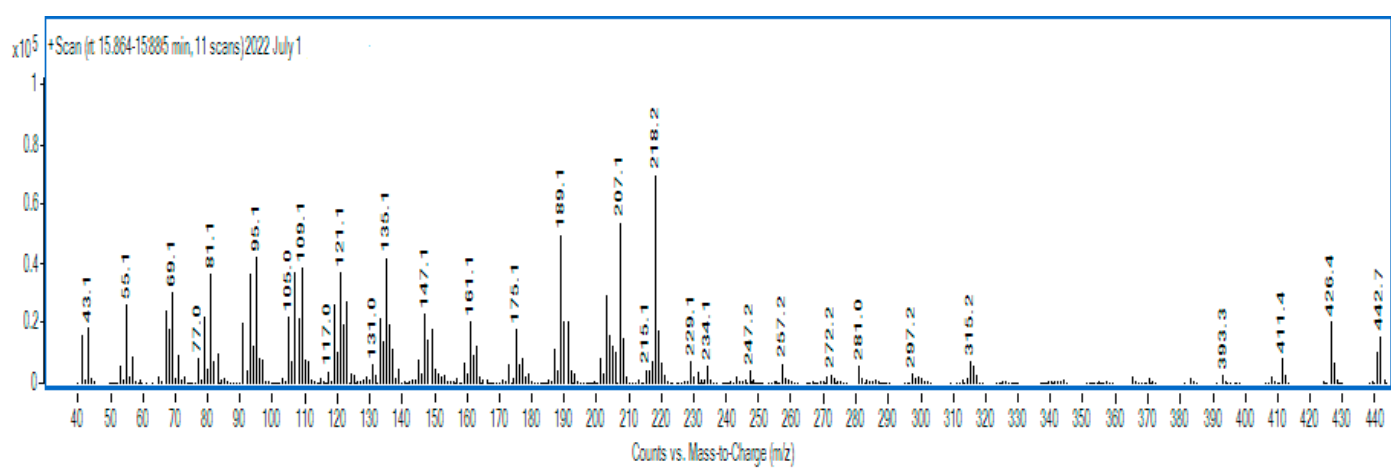


Figure S14. GC-MS spectrum of Betulin (3)

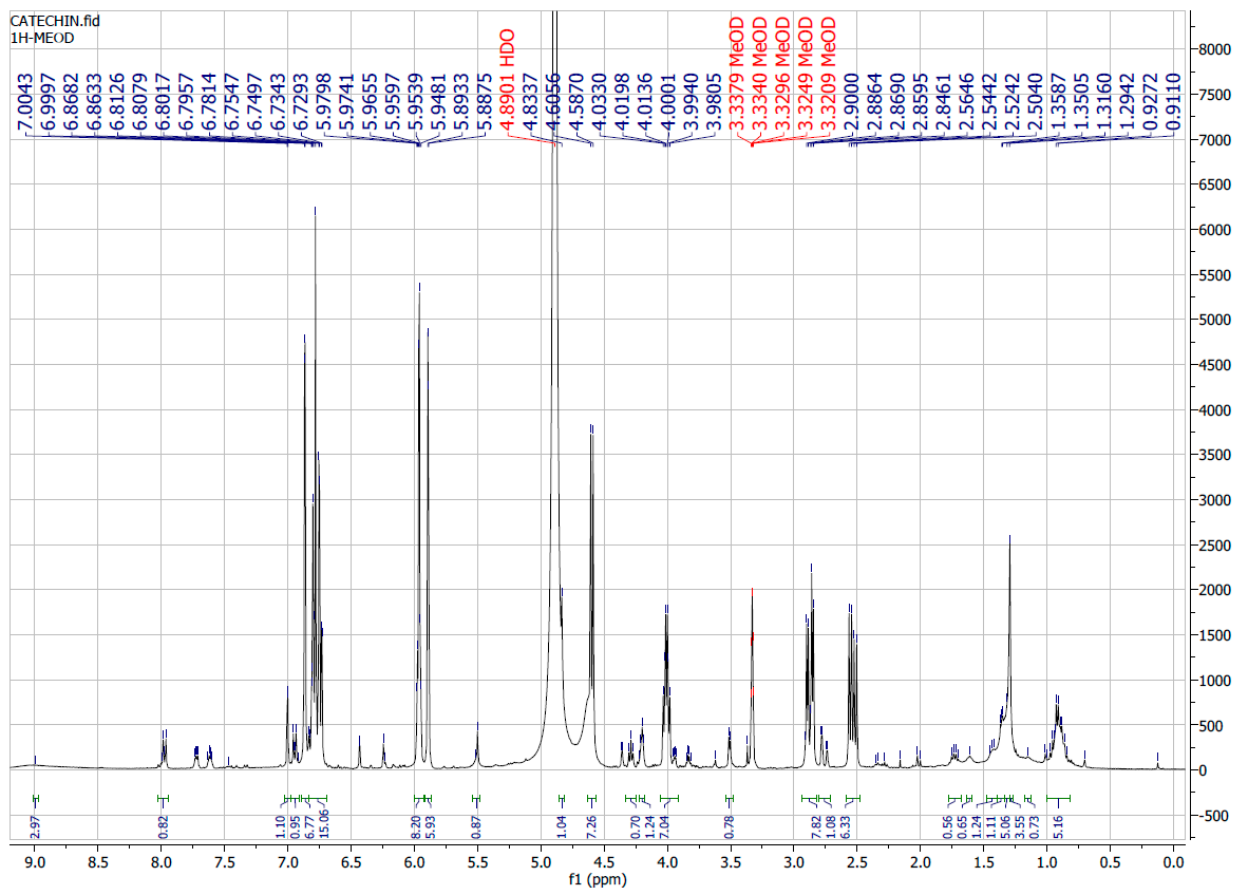


Figure S15. ^1H NMR spectrum of (+)-Catechin (4)

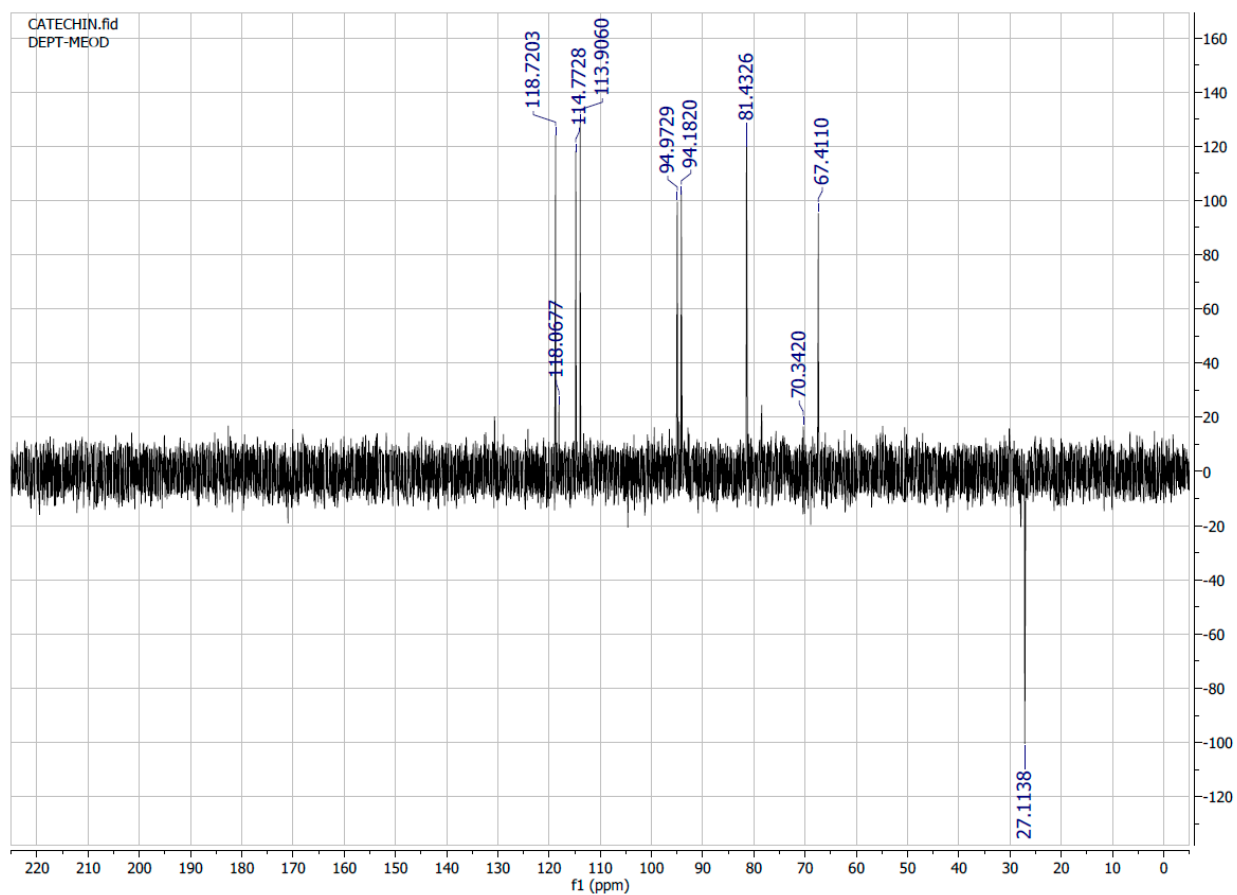


Figure S16. DEPT NMR spectrum (+)-Catechin (4)

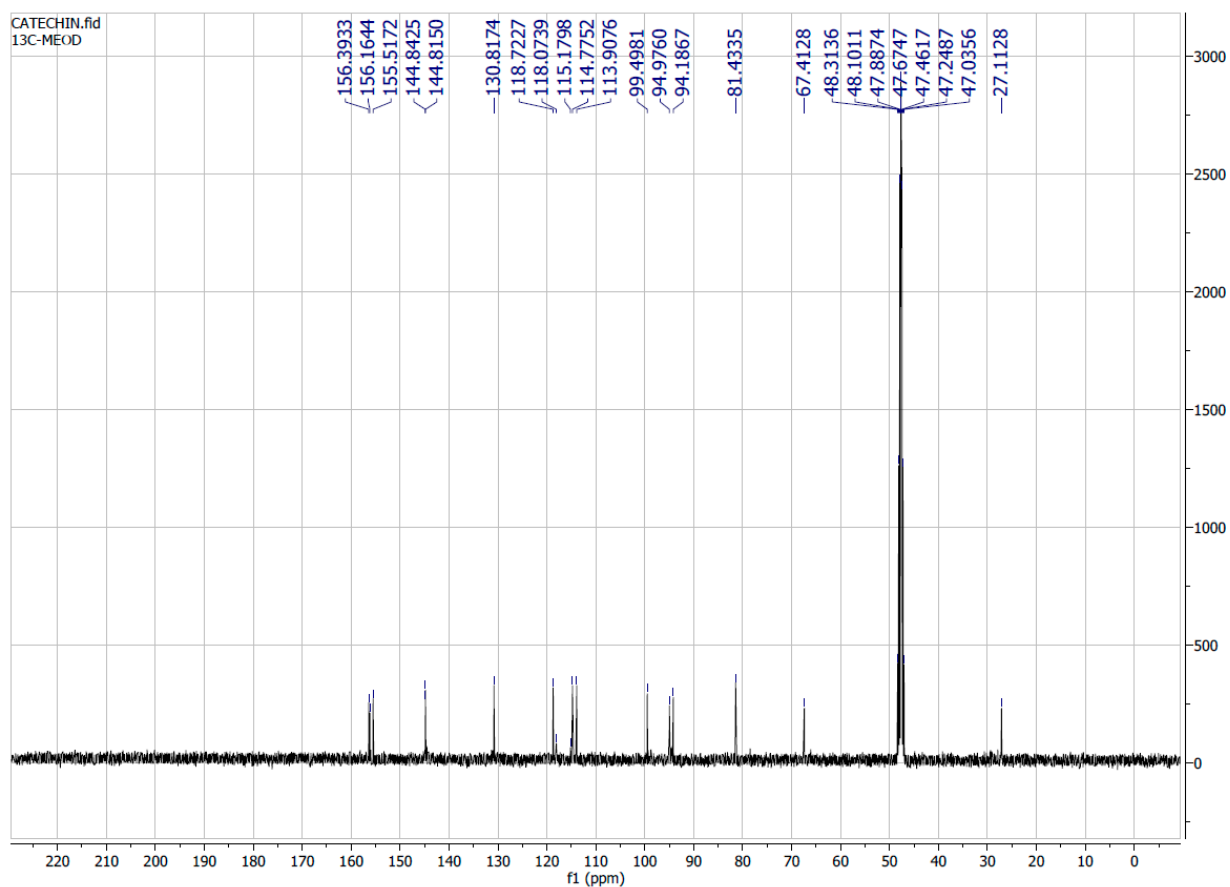


Figure S17. ^{13}C NMR spectrum of (+)-Catechin (4)

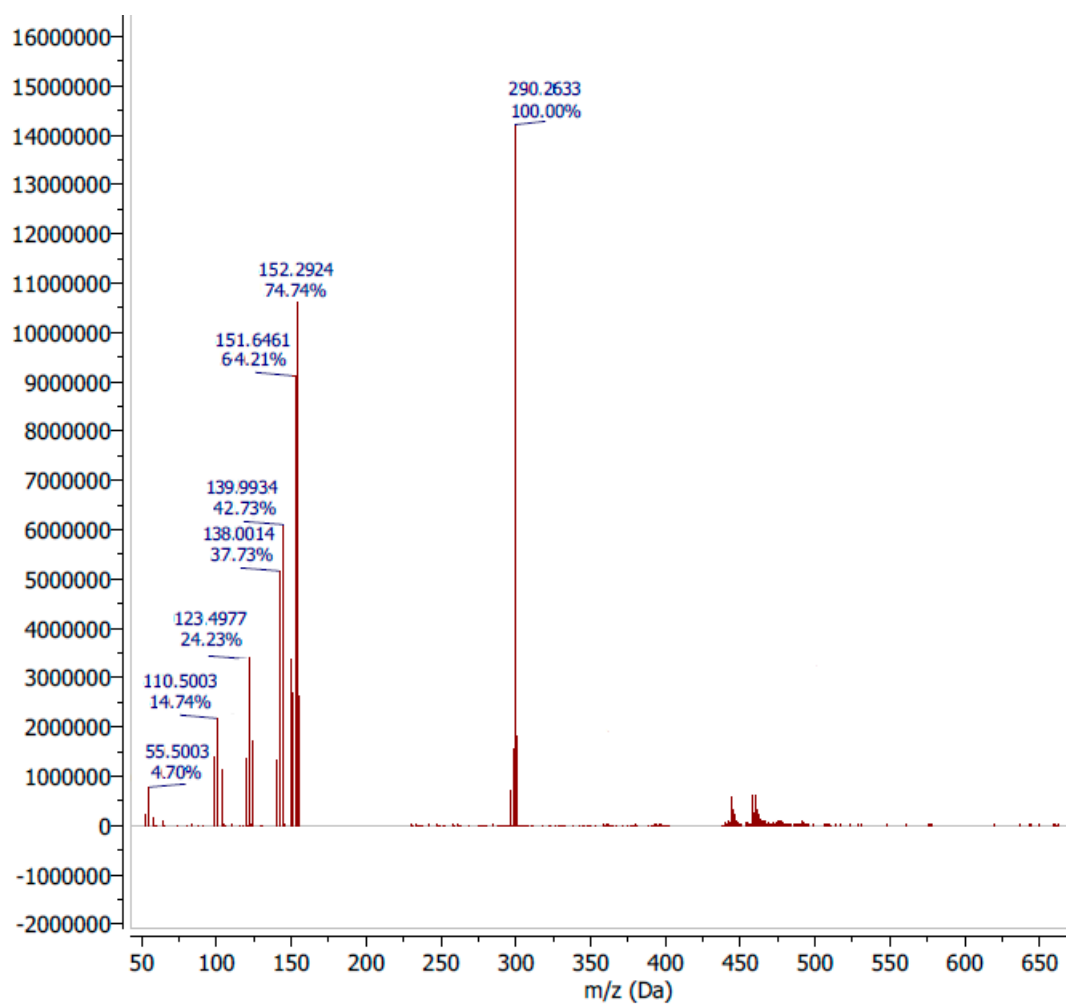


Figure S18. Mass spectrum of (+)-Catechin (4)

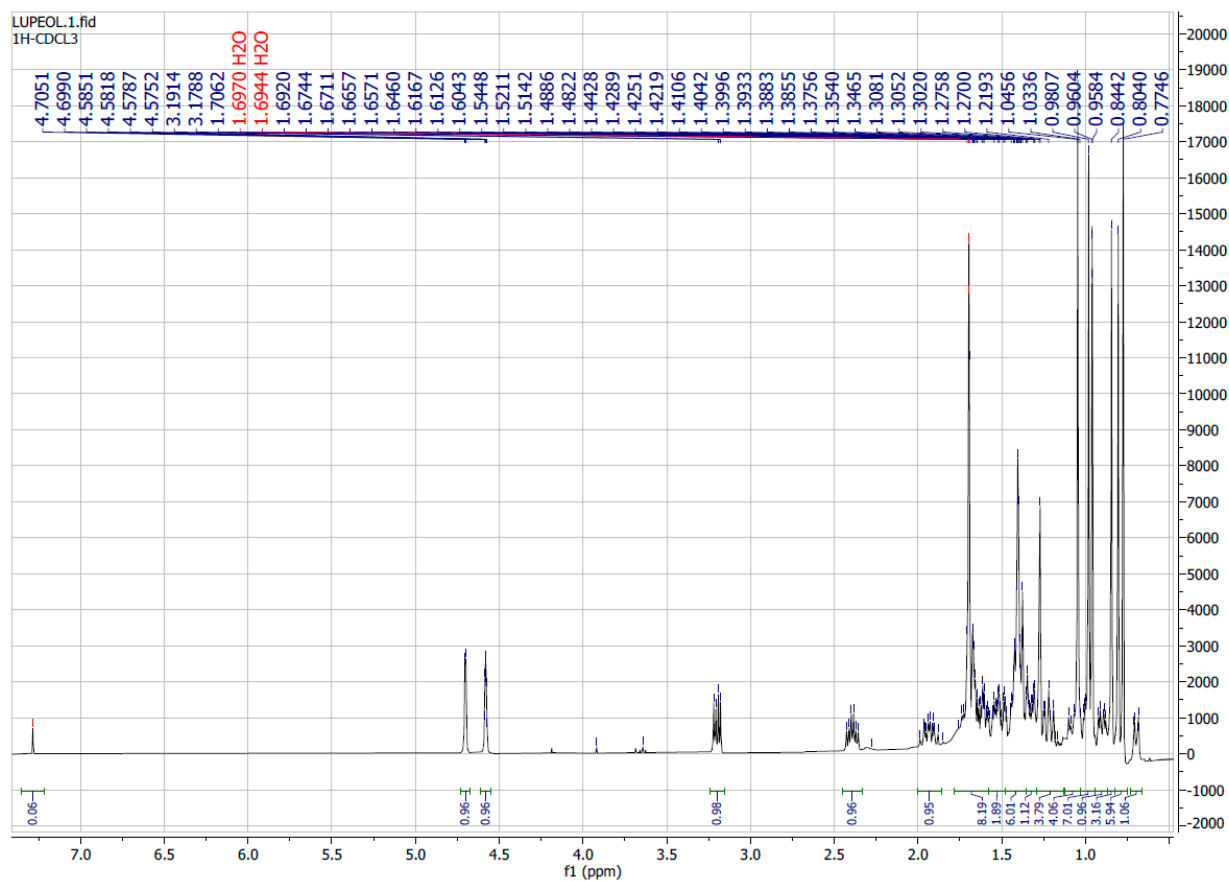


Figure S19. ^1H NMR spectrum of Lupeol (5)

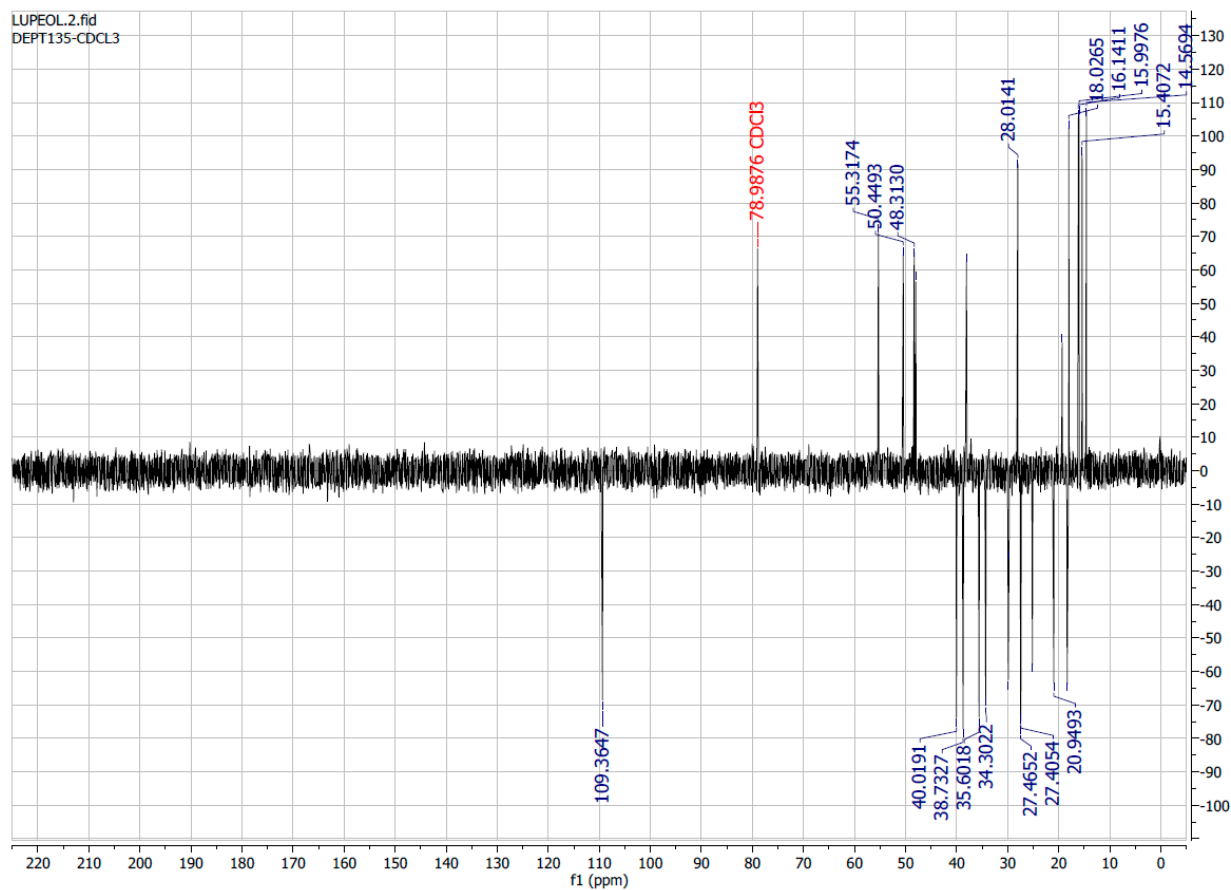


Figure S20. DEPT135 NMR spectrum of Lupeol (5)

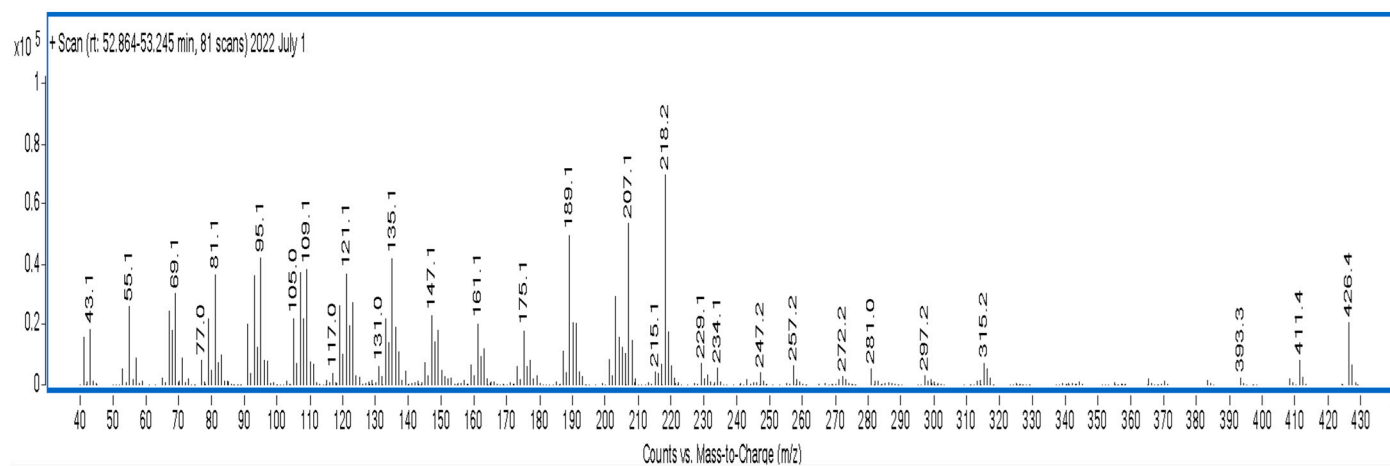


Figure S21. GC-MS Data of Lupeol (5)

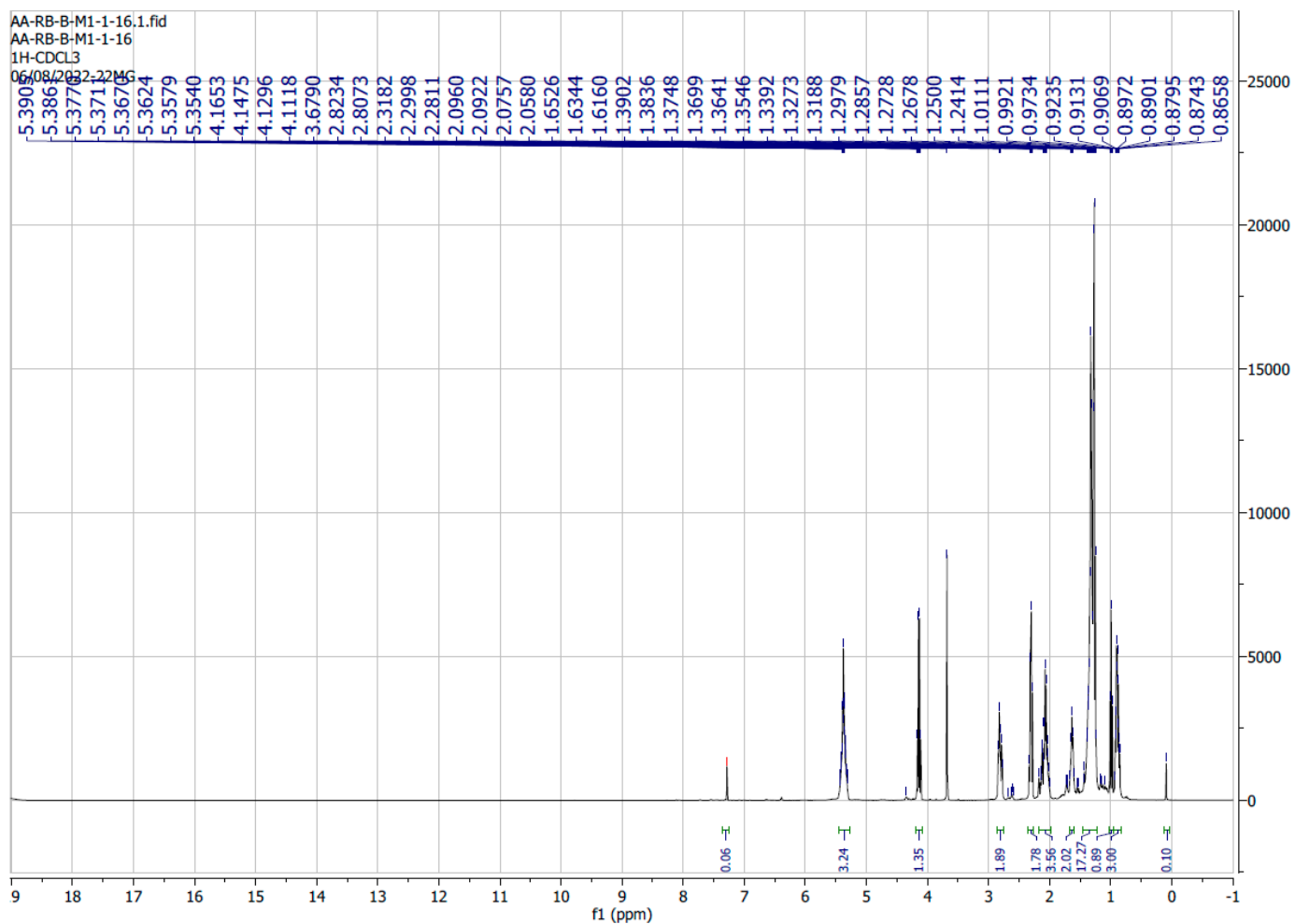


Figure S22. ^1H NMR spectrum of Ethyl linoleate (6) and Ethyl linolenate (7)

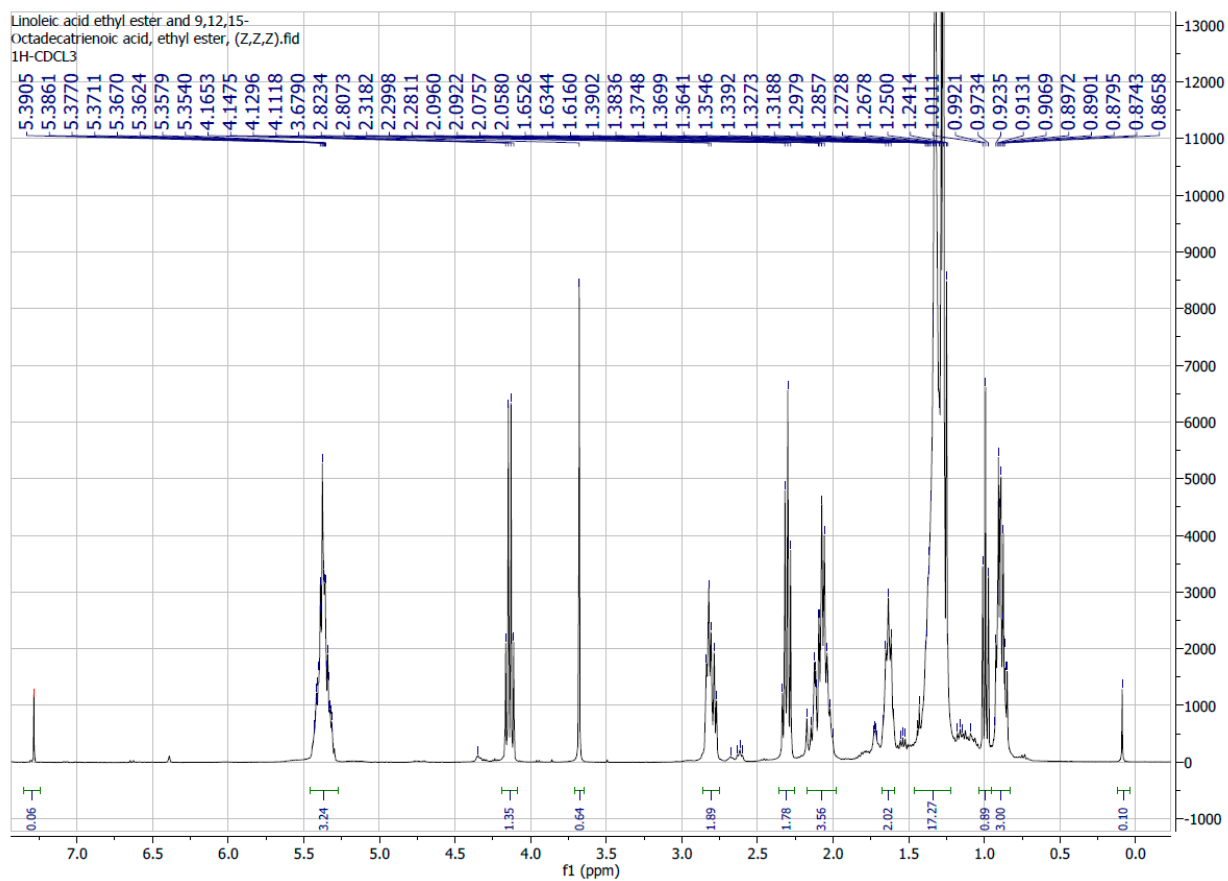


Figure S23. ^1H NMR spectrum of Ethyl linoleate (6) and Ethyl linolenate (7)

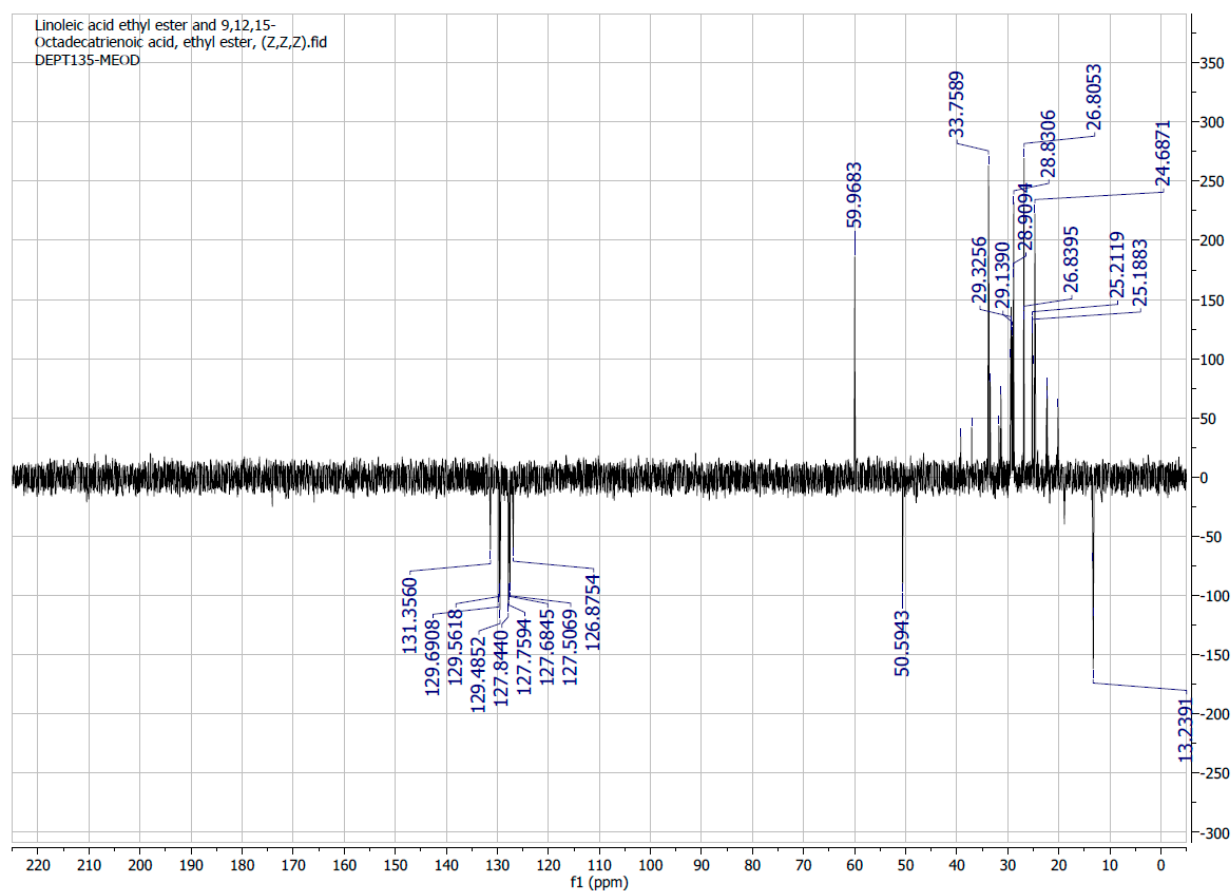


Figure S24. DEPT135 NMR spectrum of Ethyl linoleate (6) and Ethyl linolenate (7)

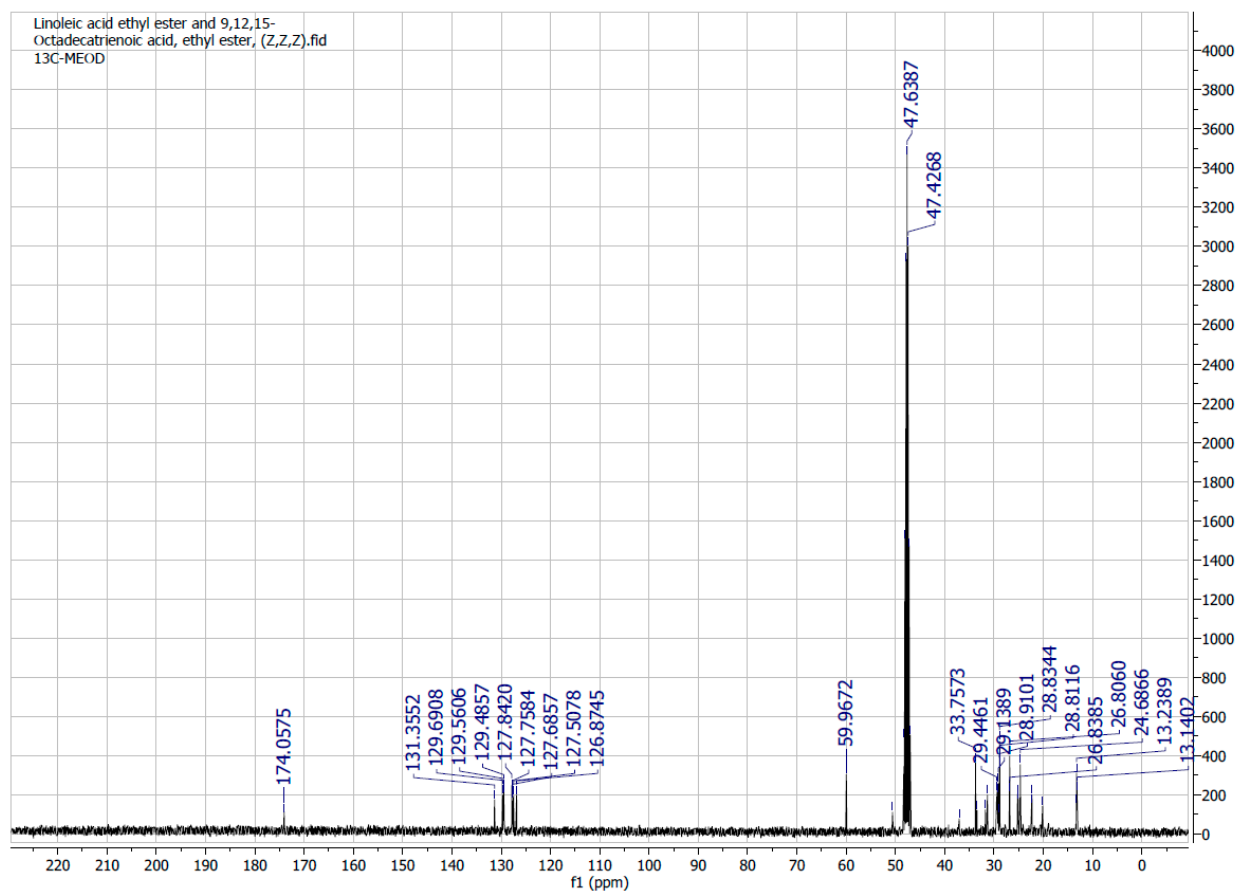


Figure S25. ^{13}C NMR spectrum of Ethyl linoleate (6) and Ethyl linolenate (7)

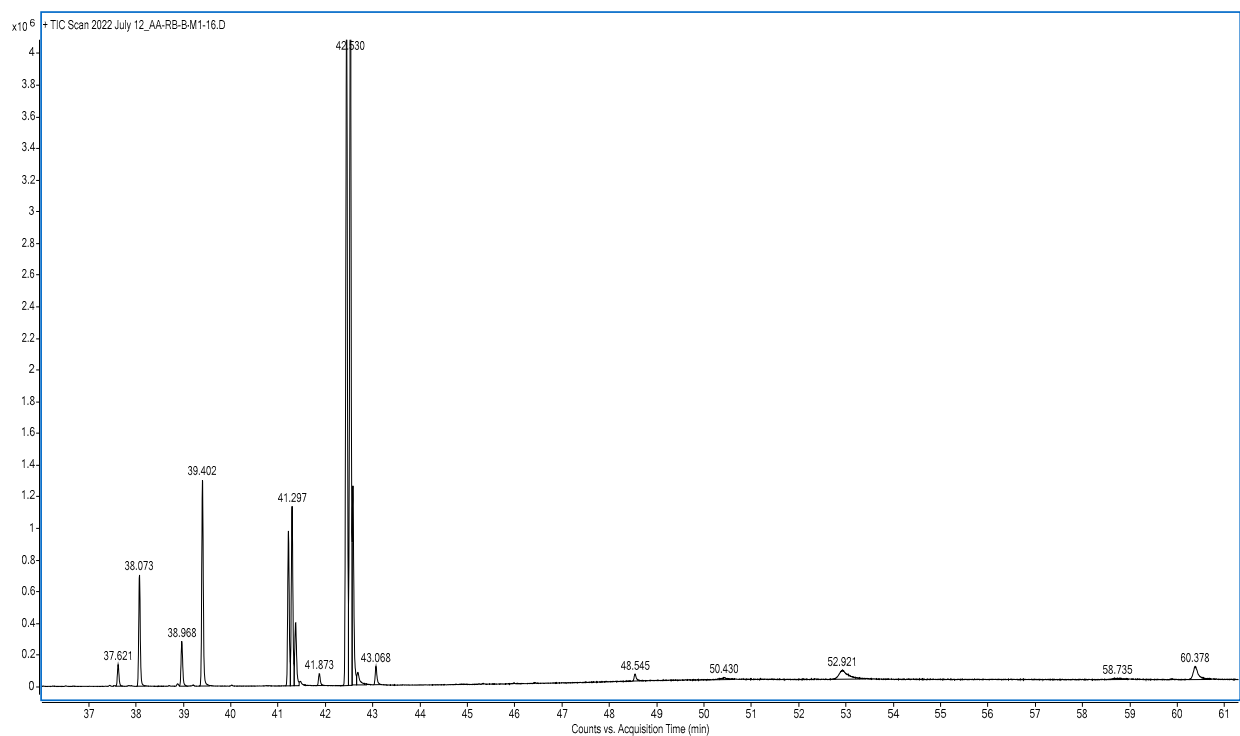


Figure S26. GC-MS Data of Ethyl linoleate (6) and Ethyl linolenate (7)

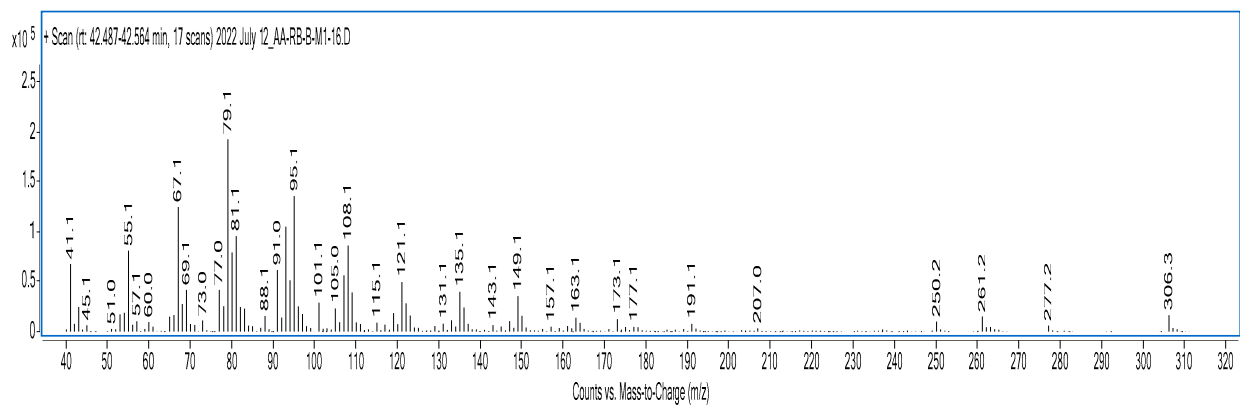


Figure S27. GC-MS Data of Ethyl linolenate

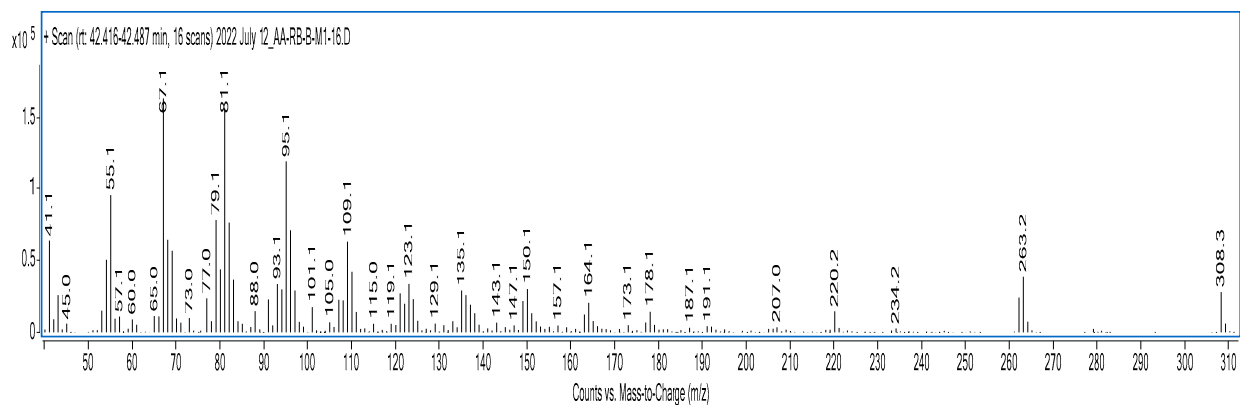


Figure S28. GC-MS Data of Ethyl linoleate