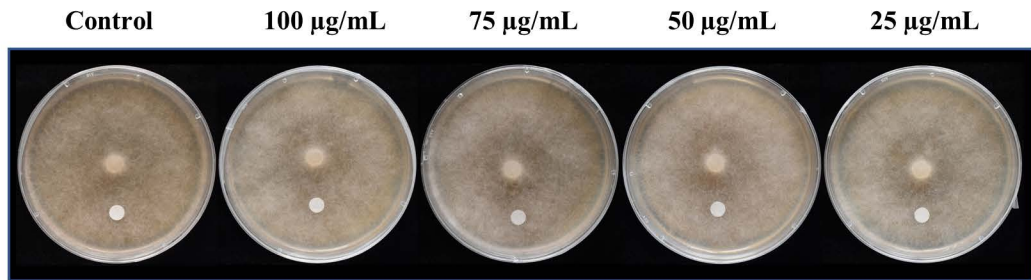


**Supplementary Figure S1.** Surfactin disk challenge of *A. medicaginicola* StC 306-5. Surfactin mildly but not significantly antagonized StC 306-5 colonies at 25 and 100 g/ml.



**Supplementary Figure S2.** Surfactin disk challenge of *Phytophthora medicaginis* A2A1. Direct application of surfactin had no effect on A2A1 growth at 25 µg/ml to 100 µg/ml.

**Supplementary Table S1.** *B. subtilis* UD1022 Mutants. Bacterial strains used in this study.

<b>Strain</b>	<b>Genotype</b>
UD1022 <i>spo0A</i>	<i>spo0A::erm</i>
UD1022 <i>sinI</i>	<i>sinI::spc</i>
1022 <i>eps tasA</i>	<i>eps::tet</i> <i>tasA::erm</i>
UD1022 <i>srfAC</i>	<i>srfAC::erm</i>
UD1022 <i>sfp</i>	<i>sfp::erm</i>
UD1022 <i>ppsB</i>	$\Omega$ <i>tn10::spec</i>
UD1022 <i>ppsB srfAC</i>	$\Omega$ <i>tn10::spec</i> <i>srfAC::erm</i>