

Table S1 Macronutrient formulae applied on soilless cultivation of water dropwort (mg/L).

Formula	Nutrition contents								Salts in total
	Ca(NO ₃) ₂ ·4H ₂ O	KNO ₃	NH ₄ NO ₃	(NH ₄) ₂ SO ₄	NH ₄ H ₂ PO ₄	MgSO ₄ ·7H ₂ O	KH ₂ PO ₄	K ₂ SO ₄	
Hoagland	945	607	–	–	115	493	–	–	2160
Cooper	1062	505	–	–	–		140	–	2445
Dutch greenhouse	886	303	–	33	–		204	218	1891
Garden-style	945	809	–	–	153	493	–	–	2400
Yamasaki	826	607	–	–	115	483	–	–	1382
SCAU	472	404	53	–	–	246	100	116	1272

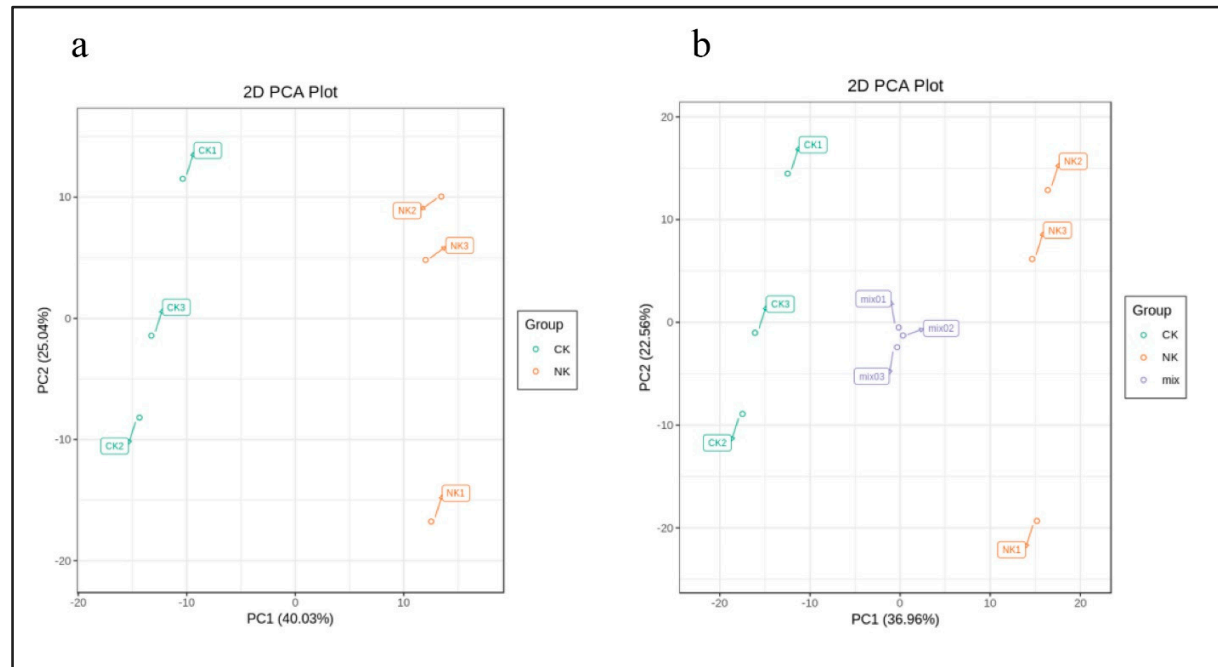


Figure S1. Sample quality evaluation of water dropwort with soil culture (CK) and Yamasaki nutrient solution (NK). (a) PCA score chart of test sample; (b) PCA score chart of test sample and quality control sample.

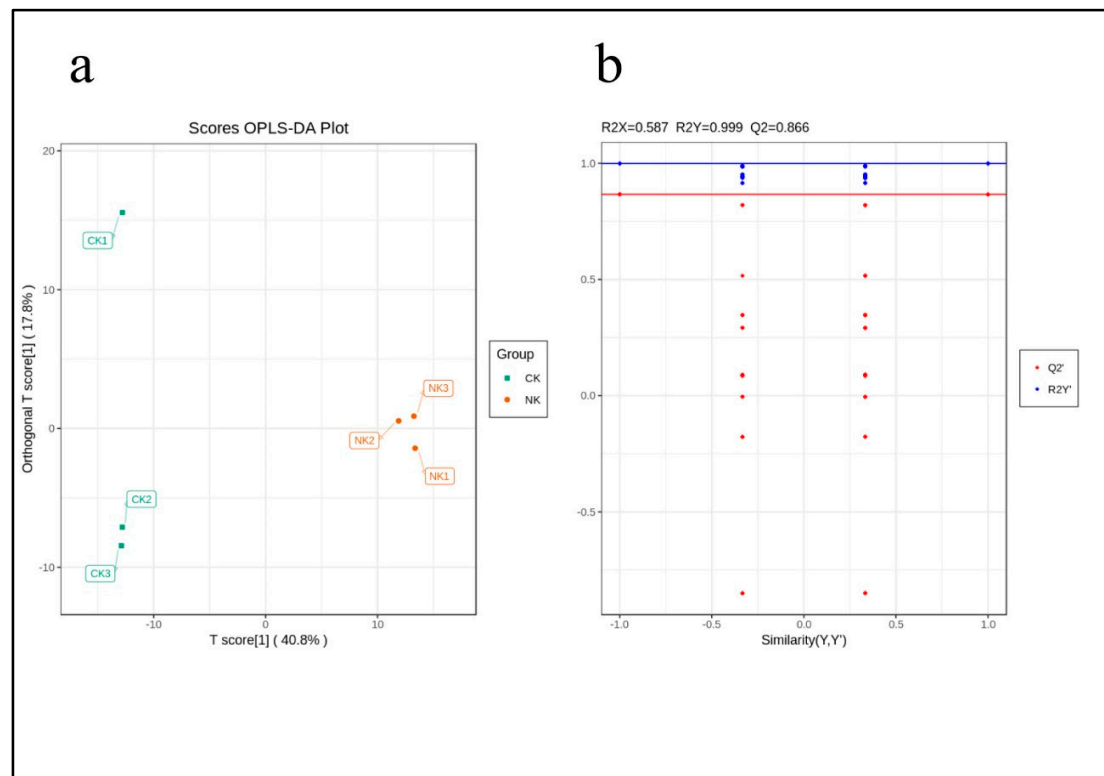


Figure S2. Differential metabolite analysis on the basis of orthogonal signal correction and partial least squares-discriminant analysis (OPLS-DA). (a) The score chart. (b) verification chart.

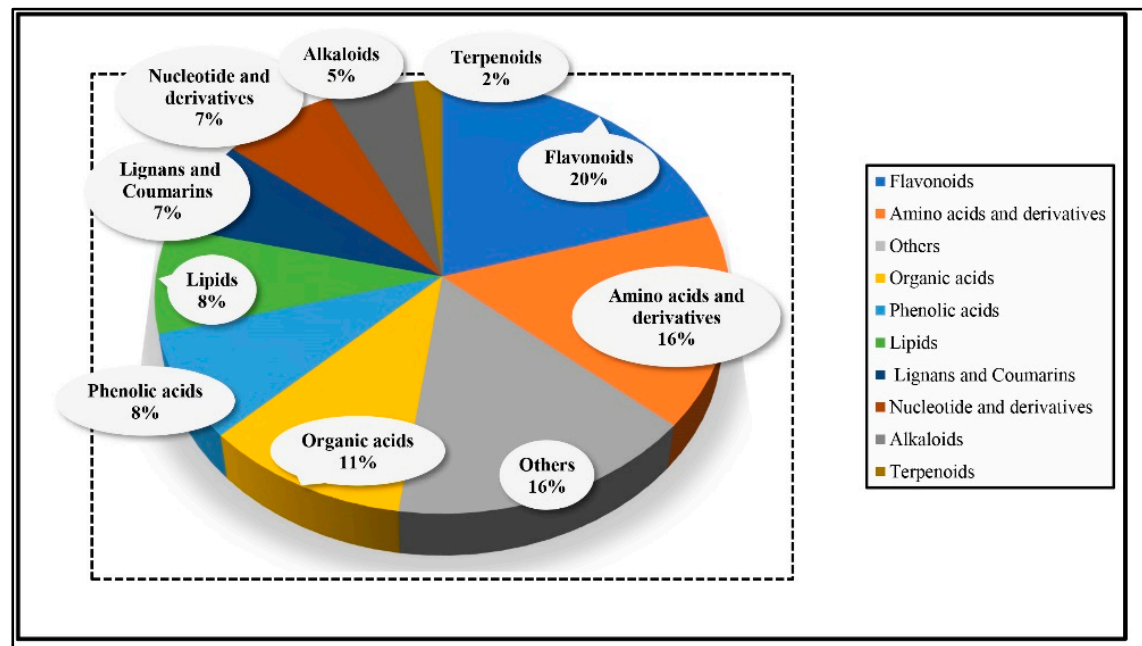


Figure S3. Primary classification of different metabolites of water dropwort cultivated in nutrient solution.

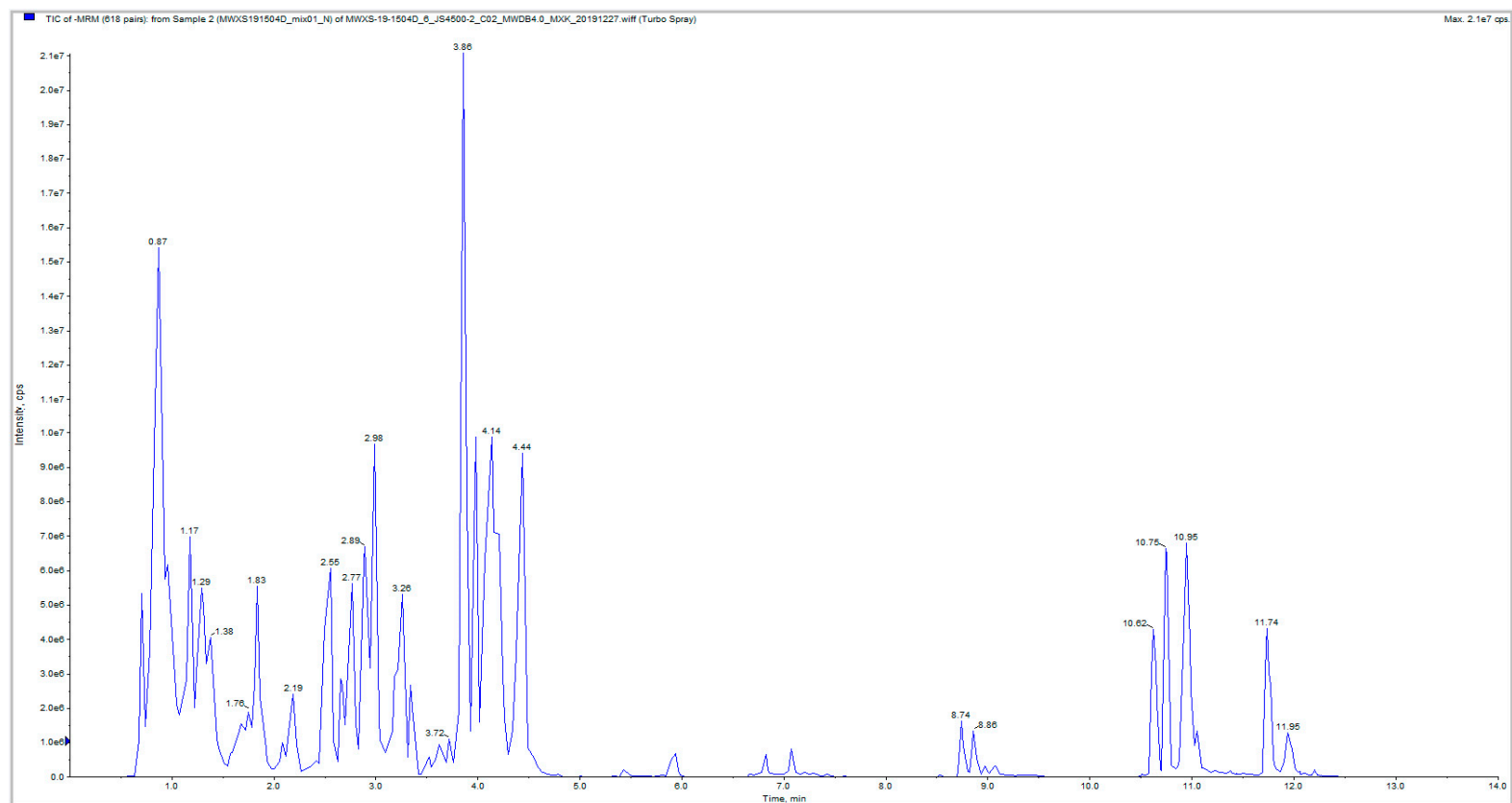


Figure S4. QC sample mass spectrometry detection TIC current diagram.