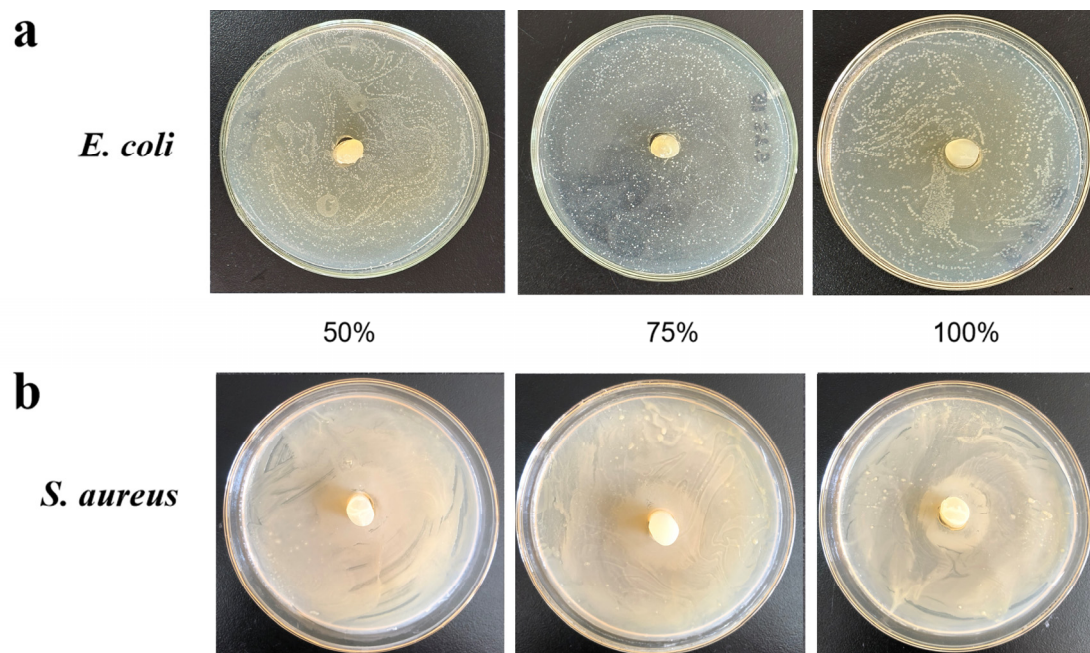


## Supplementary Materials:



**Figure S1.** Zone of inhibition of various bacteria by WT duckweed extracting solution. **(a)** Inhibition zone of different concentrations WT duckweed extracting solution on *Escherichia coli*. **(b)** Inhibition zone of different concentrations WT duckweed extracting solution on *Staphylococcus aureus*.

**Table S1 Gene expression of Penaeidin in duckweed**

Lines	Gene-id	Description	readcount
Pen3a_D	Cluster-6169.0	Penaeidin-3 OS= <i>Litopenaeus vannamei</i>	1.84520081740231
Pen3a_E	Cluster-6169.0	Penaeidin-3 OS= <i>Litopenaeus vannamei</i>	5.418213813
Pen3a_H	Cluster-6169.0	Penaeidin-3 OS= <i>Litopenaeus vannamei</i>	5.67877520684982
Pen3a_J	Cluster-6169.0	Penaeidin-3 OS= <i>Litopenaeus vannamei</i>	4.75452543036578
Pen3a_K	Cluster-6169.0	Penaeidin-3 OS= <i>Litopenaeus vannamei</i>	18.3589398900158
WT	Cluster-6169.0	Penaeidin-3 OS= <i>Litopenaeus vannamei</i>	0