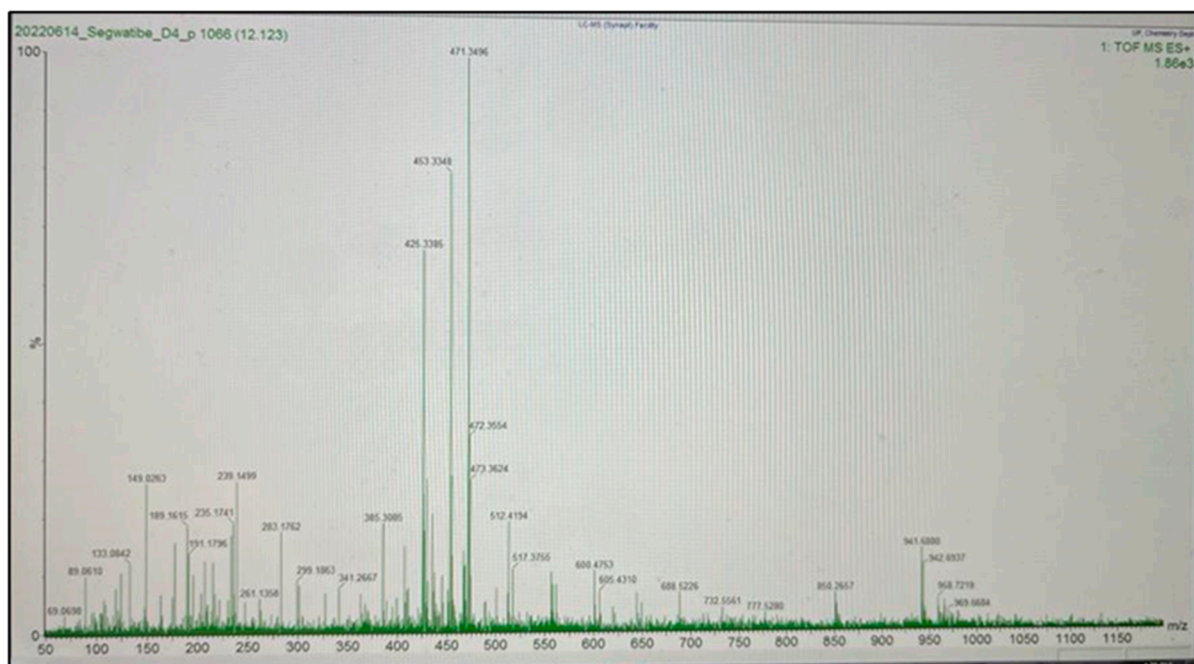
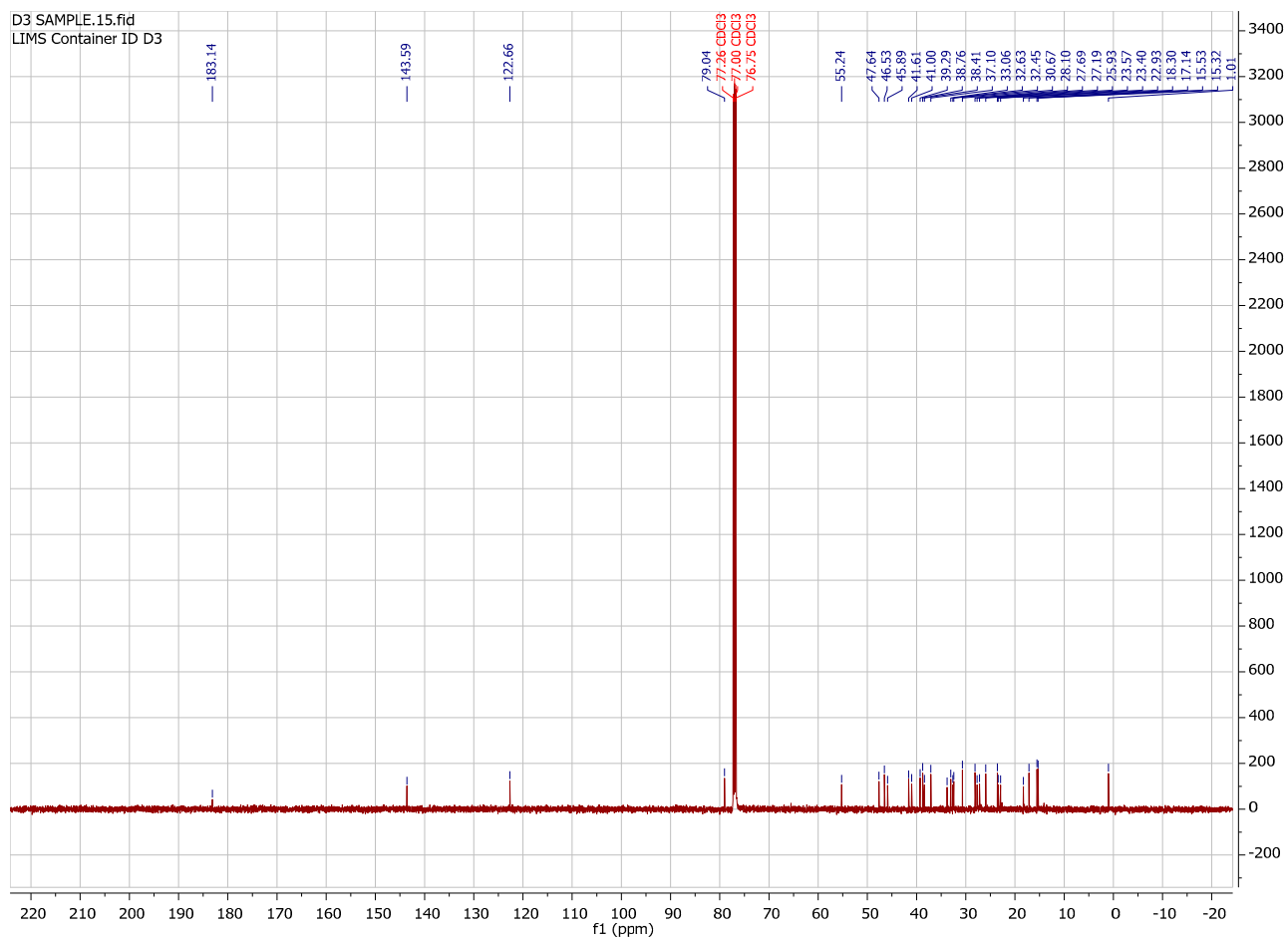


**Figure S1.** Total ion chromatogram of **D4** during analysis indicating the purity of the isolate as detected by diode array and TOF MS ESI-BPI.



**Figure S2.** UPLC-TOF MS indicating the fragments of D4 (453, 426, 386, 283, 239, 149)



**Figure S3. C-13 NMR of D4**

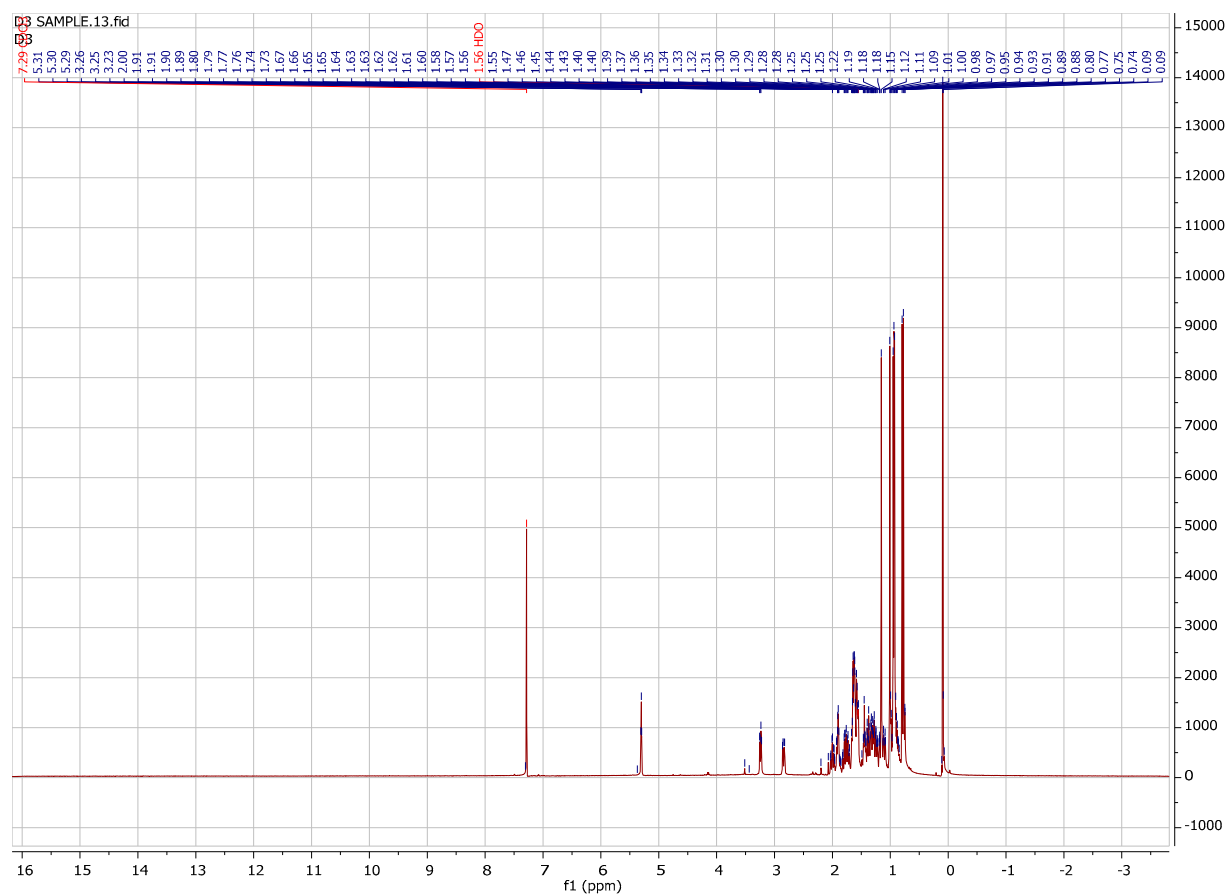
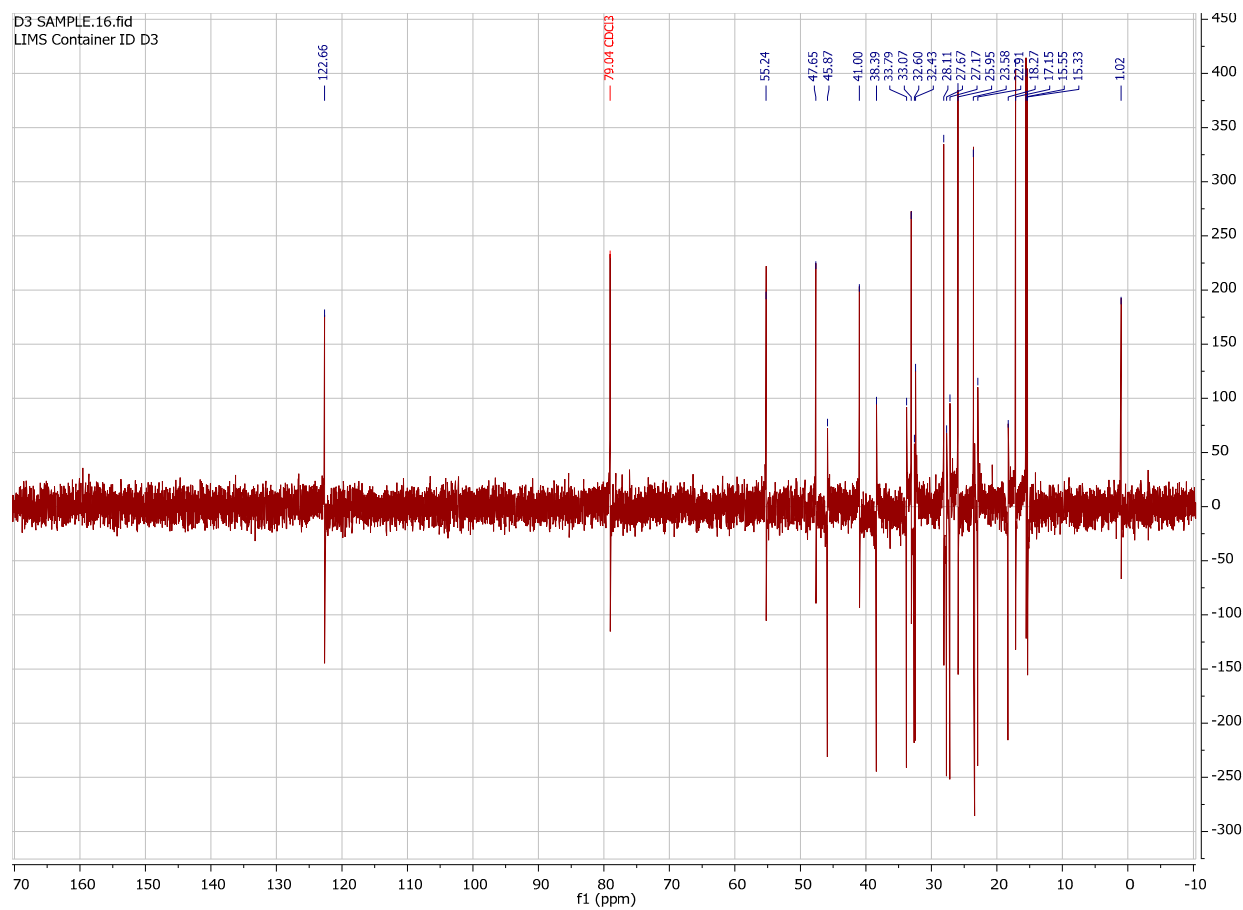


Figure S4. H-1 NMR of D4



**Figure S5. DEPT NMR of D4**

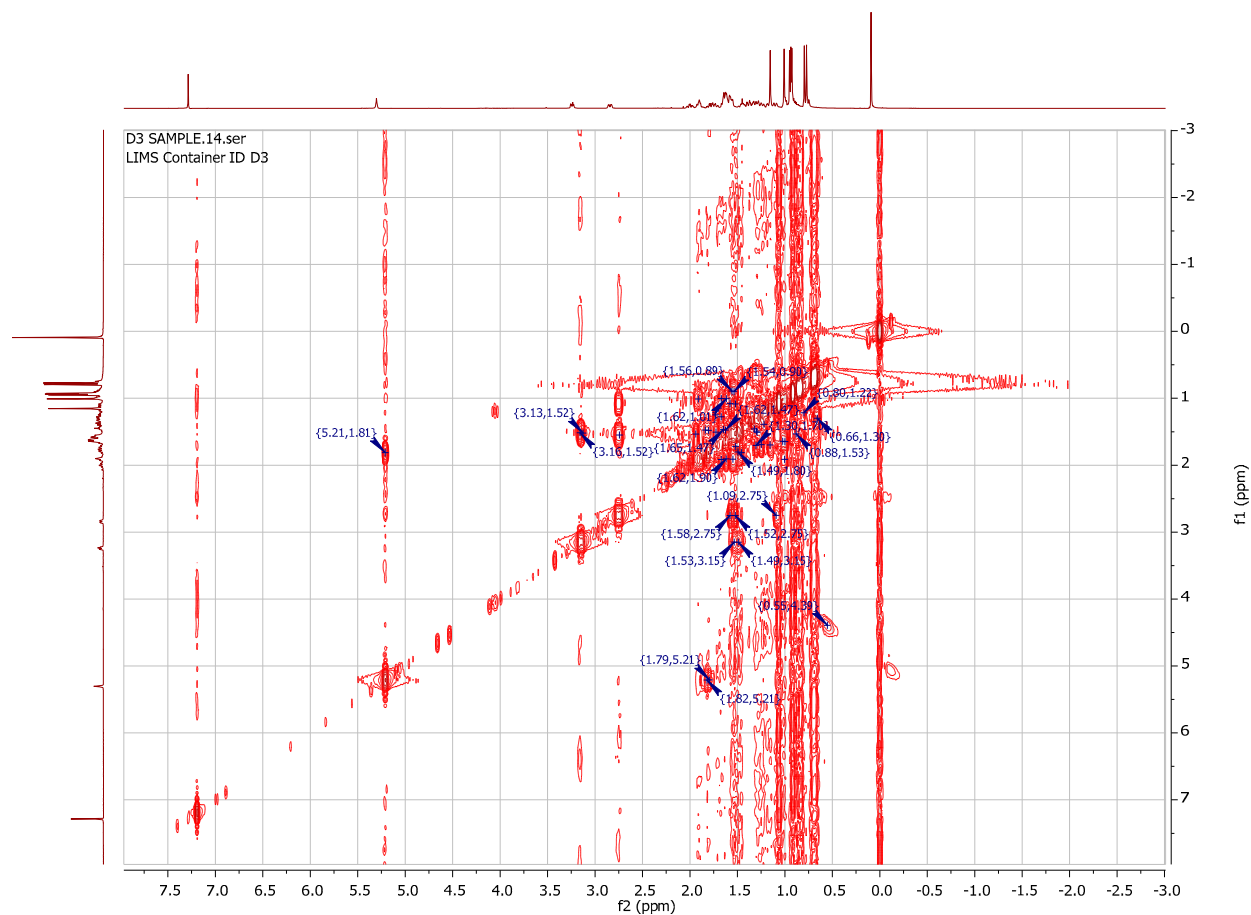
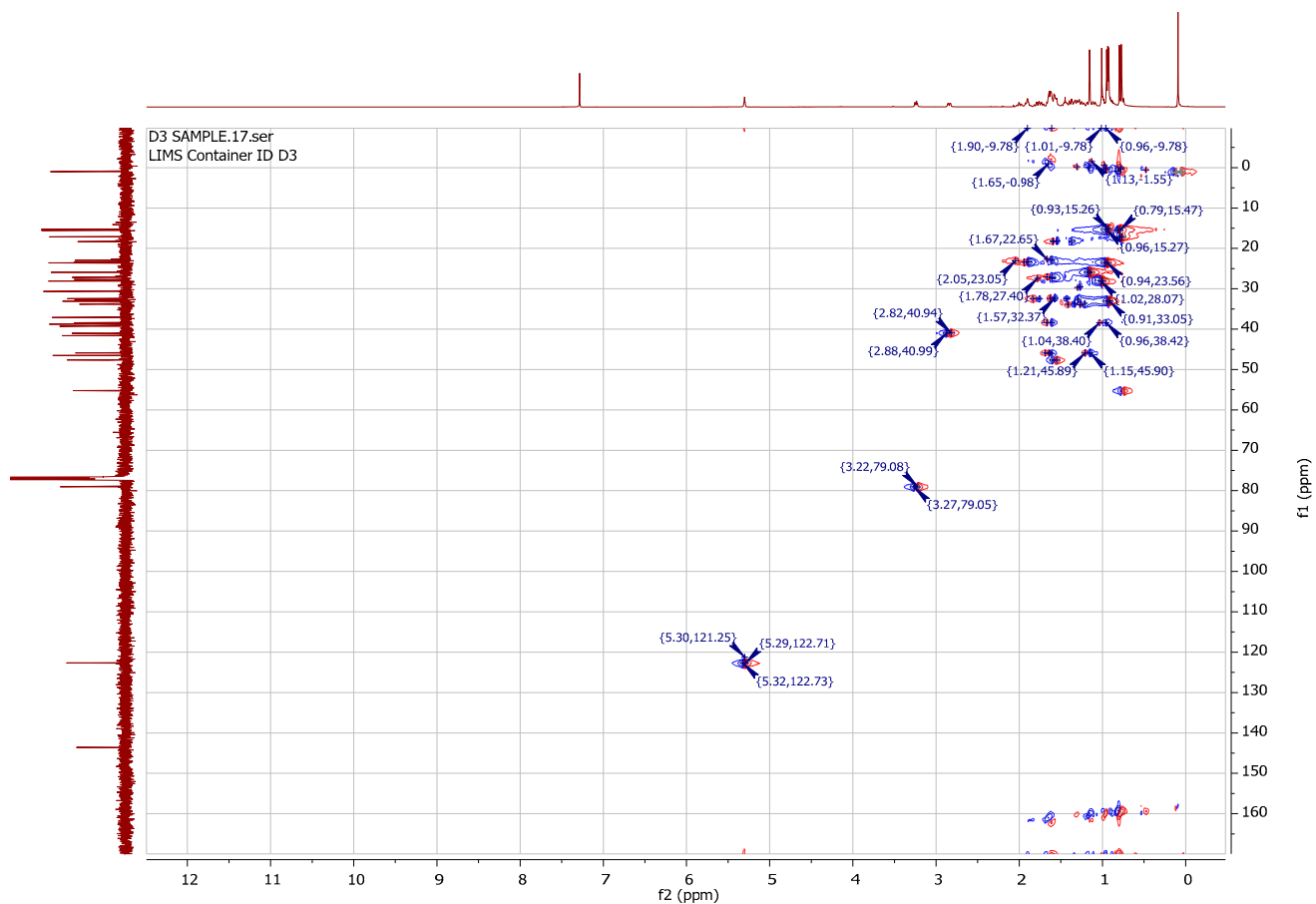
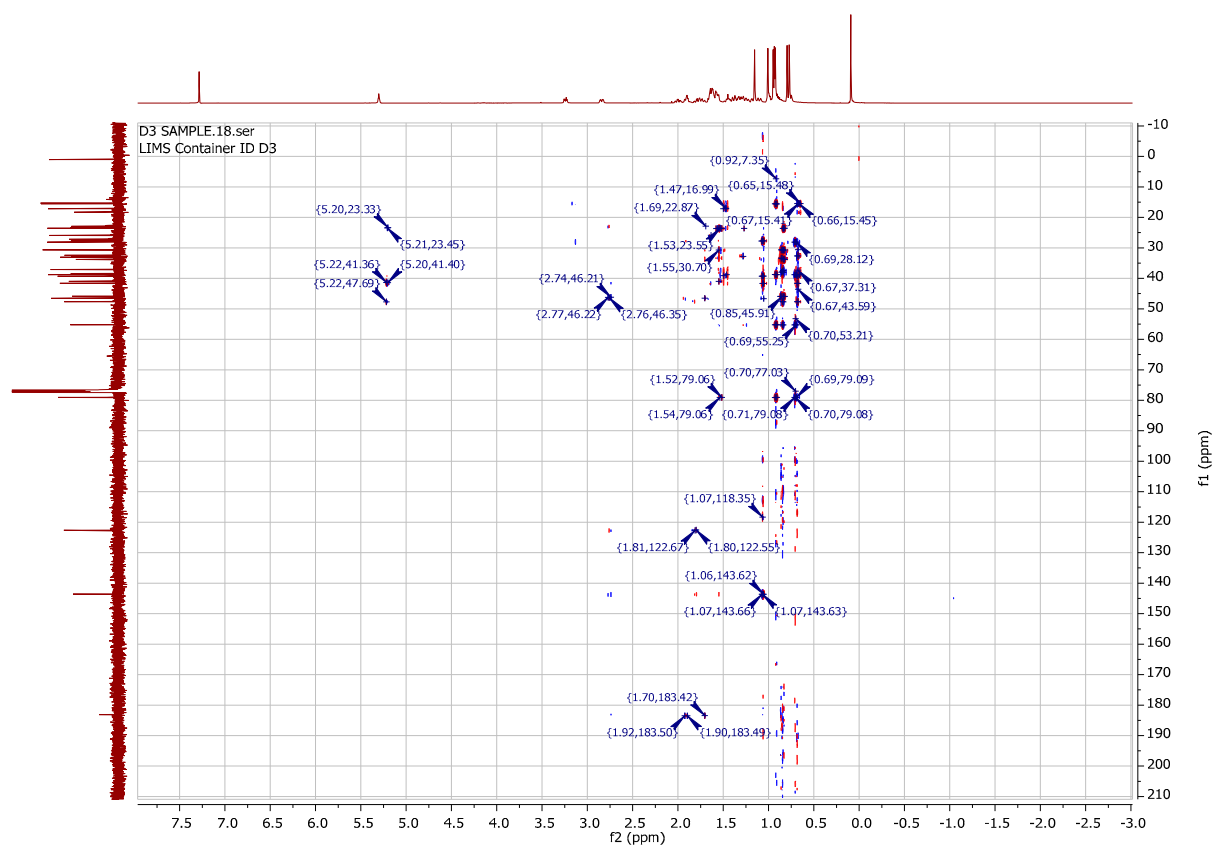


Figure S6. COSY NMR of D4



**Figure S7. HSQC NMR of D4**



**Figure S8. HMBC NMR of D4**