

## SUPPLEMENTARY MATERIAL

### **Cosmetic preservative potential and chemical composition of *Lafoensia replicata* Pohl leaves**

Débora Machado de Lima<sup>1</sup>, Anna Lívia Oliveira Santos<sup>2</sup>, Matheus Reis Santos de Melo<sup>3</sup>,  
Denise Crispim Tavares<sup>3</sup>, Carlos Henrique Gomes Martins<sup>2</sup>, Raquel Maria Ferreira Sousa<sup>1\*</sup>

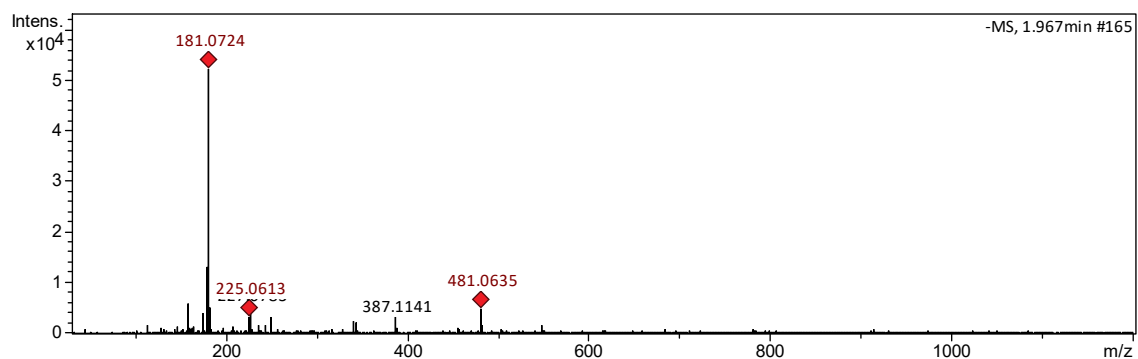
<sup>1</sup>Institute of Chemistry, Federal University of Uberlândia, Av. João Naves de Ávila 2121,  
38400-902, Uberlândia, MG, Brazil

<sup>2</sup>Institute of Biomedical Sciences, Federal University of Uberlândia, Av. João Naves de  
Ávila 2121, 38400-902, Uberlândia, MG, Brazil

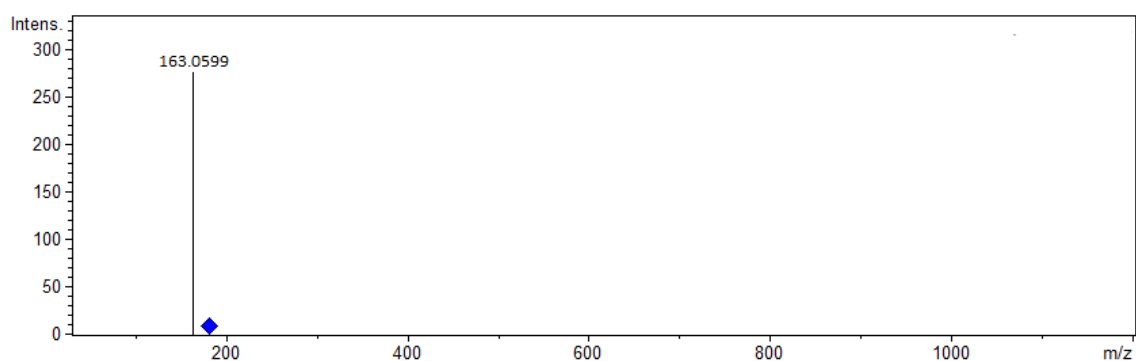
<sup>3</sup>University of Franca, Av. Dr. Armando Salles Oliveira, 201, 14.404-600 Franca, São Paulo,  
Brazil

\* Corresponding author: rsousa@ufu.br

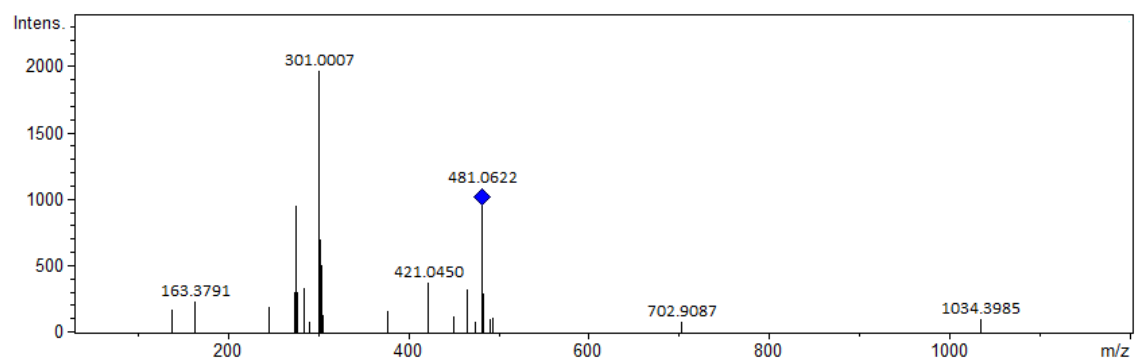
**Figure S1:** (–)-MS of compounds 1 and 2 ( $m/z$  181.0724 e 481.0635  $[M - H]^-$ ) of Table 4.



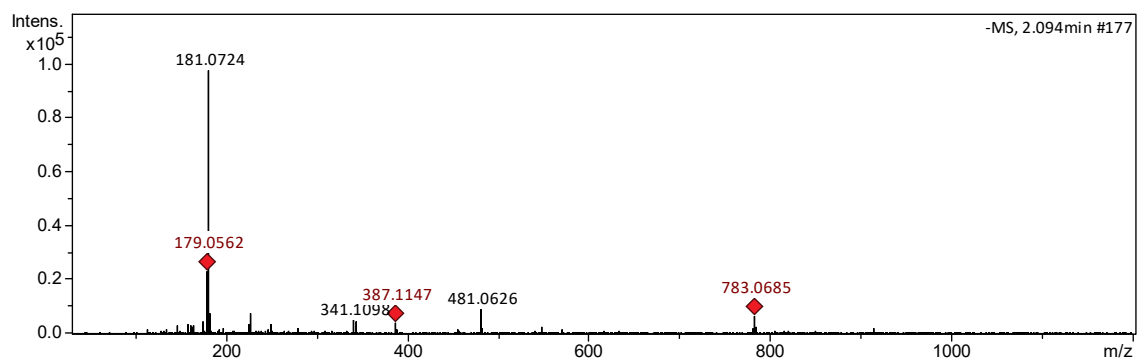
**Figure S2:** (–)-ESI-MS/MS of compound 1 ( $m/z$  181.0724  $[M - H]^-$ ) of Table 4.



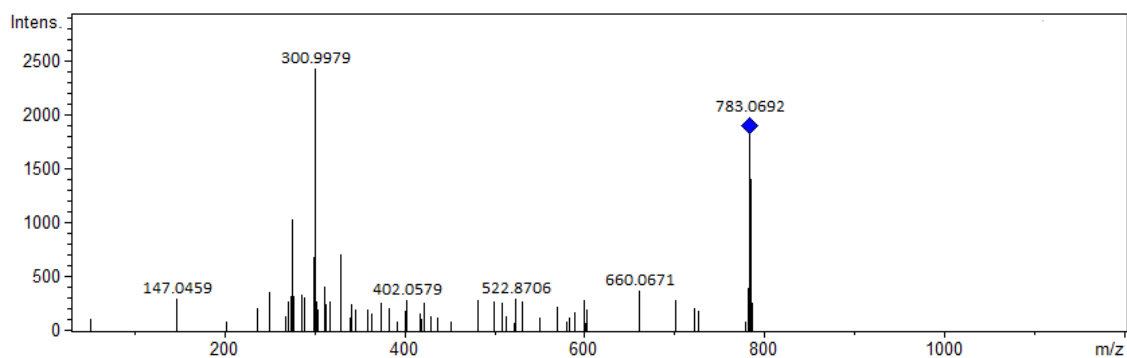
**Figure S3:** (–)-ESI-MS/MS of compound 2 ( $m/z$  481.0635  $[M - H]^-$ ) of Table 4.



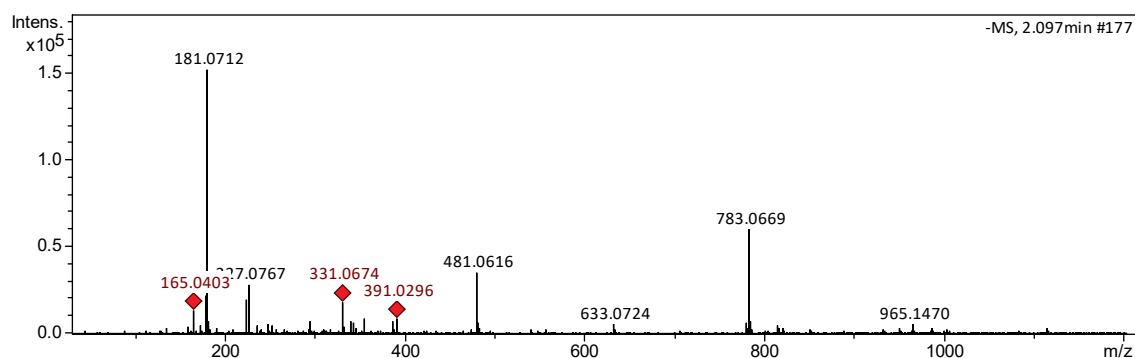
**Figure S4:** (–)-MS of compound 3 ( $m/z$  783.0685  $[M - H]^-$ ) of Table 4.



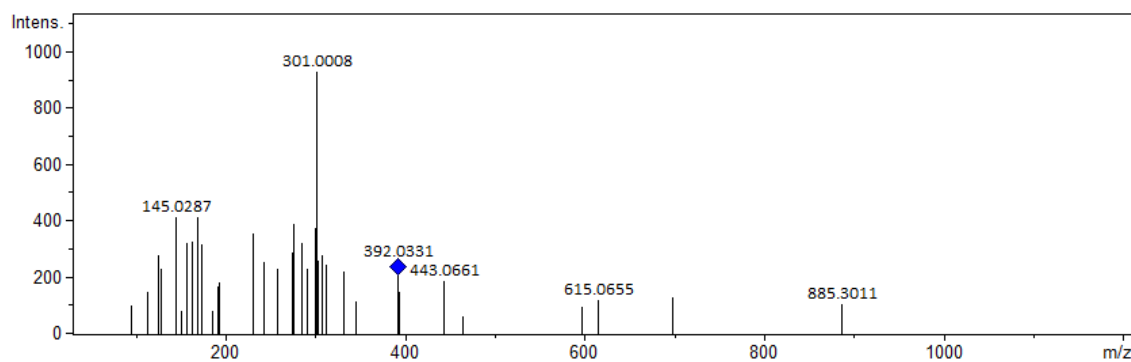
**Figure S5:** (–)-ESI-MS/MS of compound 3 ( $m/z$  783.0685  $[M - H]^-$ ) of Table 4.



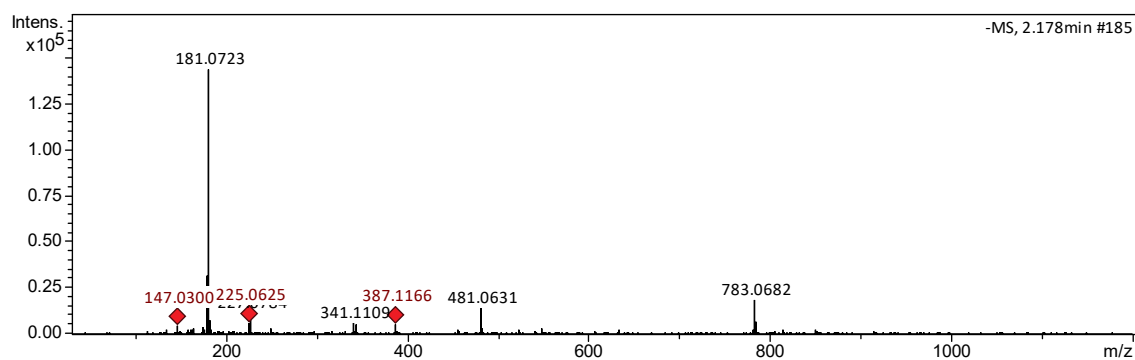
**Figure S6:** (–)-MS of compound 4 ( $m/z$  391.0303  $[M-2H]^{2-}$ ) of Table 4.



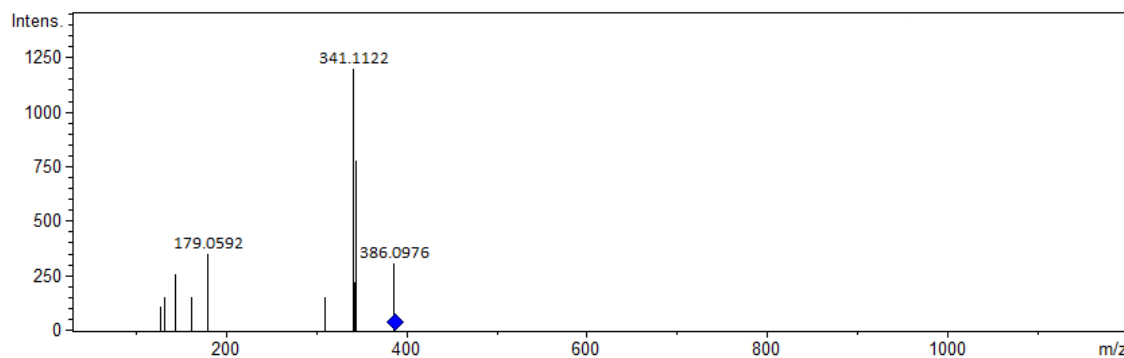
**Figure S7:** (–)-ESI-MS/MS of compound 4 ( $m/z$  391.0303  $[M-2H]^{2-}$ ) of Table 4.



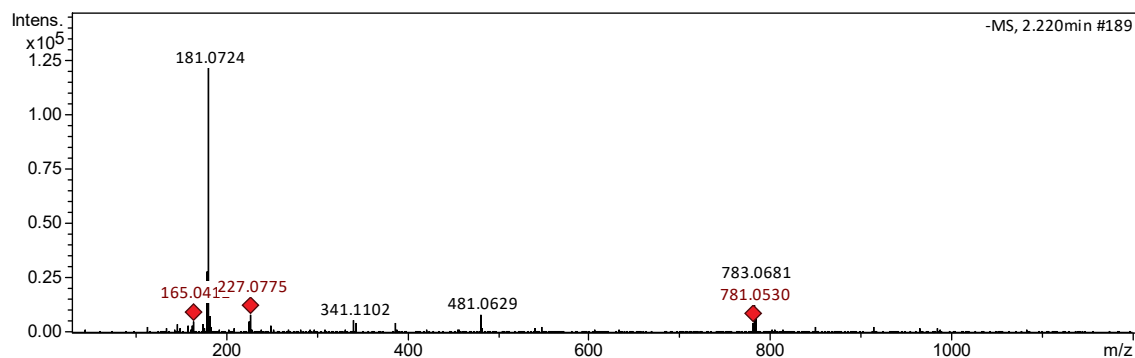
**Figure S8:** (–)-MS of compound 5 ( $m/z$  387.1166  $[M - H]^-$ ) of Table 4.



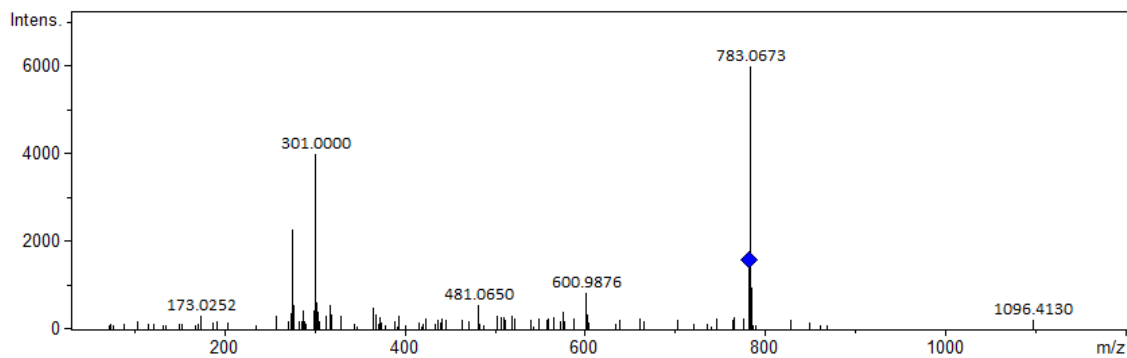
**Figure S9:** (–)-ESI-MS/MS of compound 5 ( $m/z$  387.1166  $[M - H]^-$ ) of Table 4.



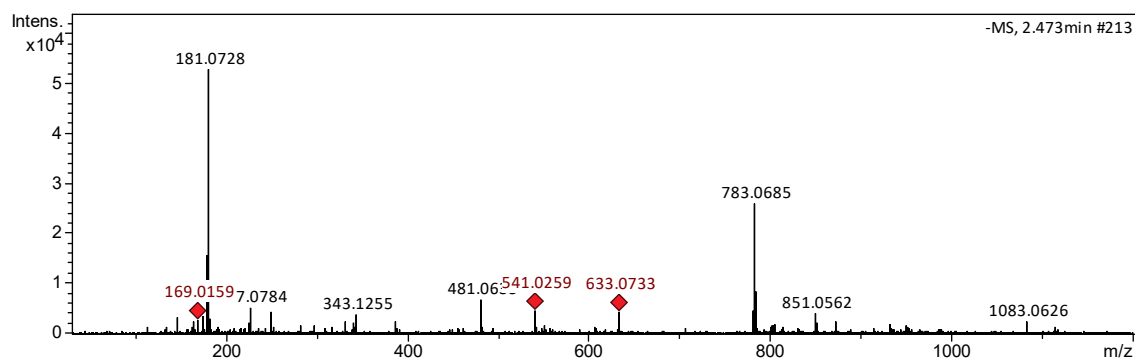
**Figure S10:** (–)-MS of compound 6 ( $m/z$  781.0530  $[M - H]^-$ ) of Table 4.



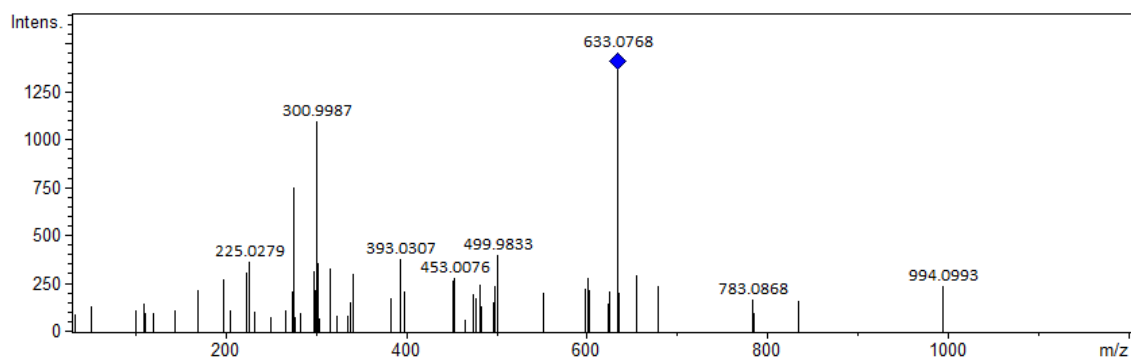
**Figure S11:** (–)-ESI-MS/MS of compound 6 ( $m/z$  781.0530  $[M - H]^-$ ) of Table 4.



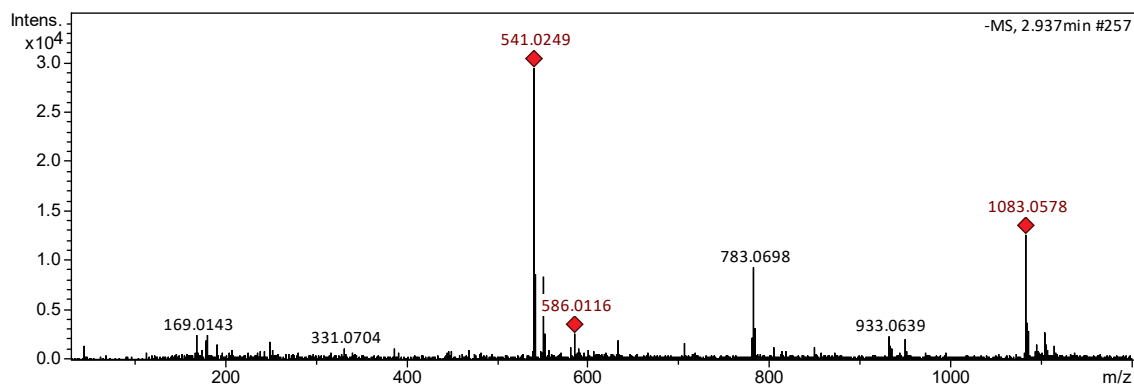
**Figure S12:** (–)-MS of compound 7 ( $m/z$  633.0733  $[M - H]^-$ ) of Table 4.



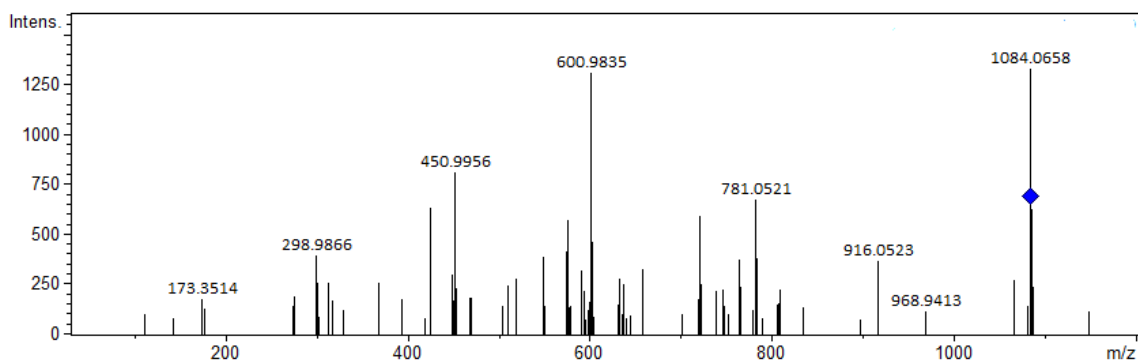
**Figure S13:** (–)-ESI-MS/MS of compound 7 ( $m/z$  633.0733  $[M - H]^-$ ) of Table 4.



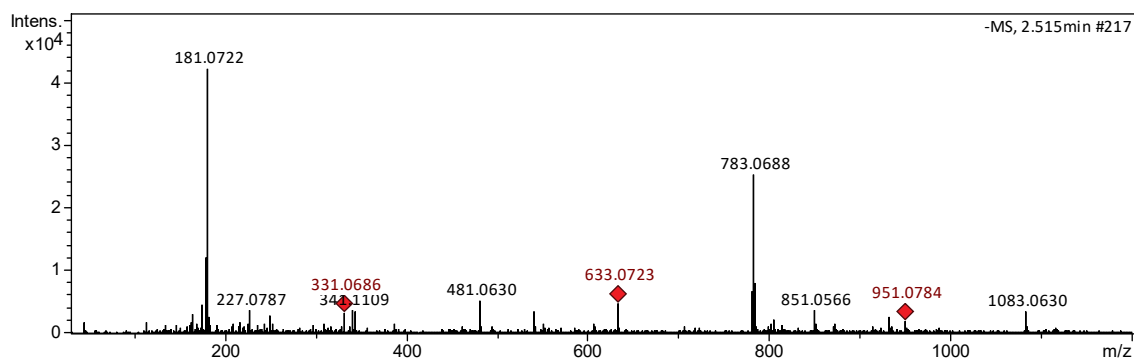
**Figure S14:** (–)-MS of compound 8 ( $m/z$  541.0249  $[M - 2H]^{2-}$ ) of Table 4.



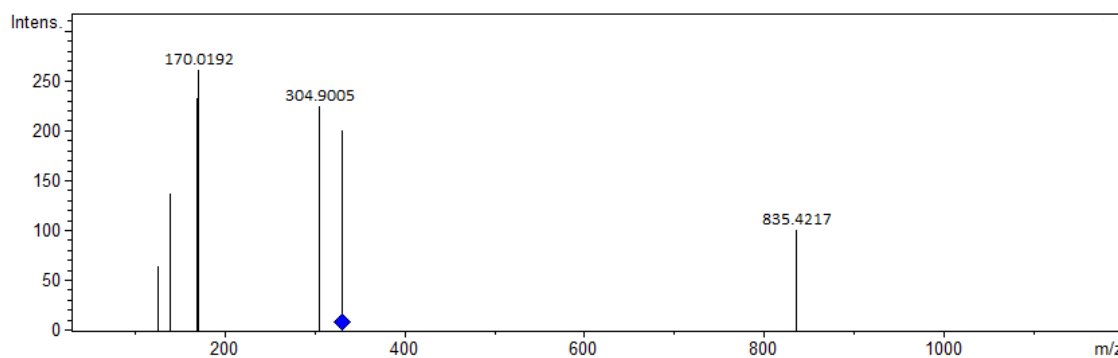
**Figure S15:** (–)-ESI-MS/MS of compound 8 ( $m/z$  541.0249  $[M - 2H]^{2-}$ ) of Table 4.



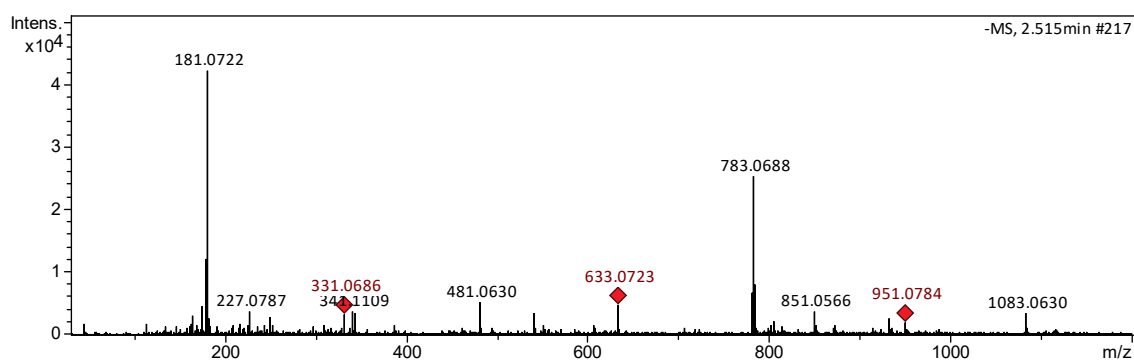
**Figure S16:** (–)-MS of compound 9 ( $m/z$  331.0686  $[M - H]^-$ ) of Table 4.



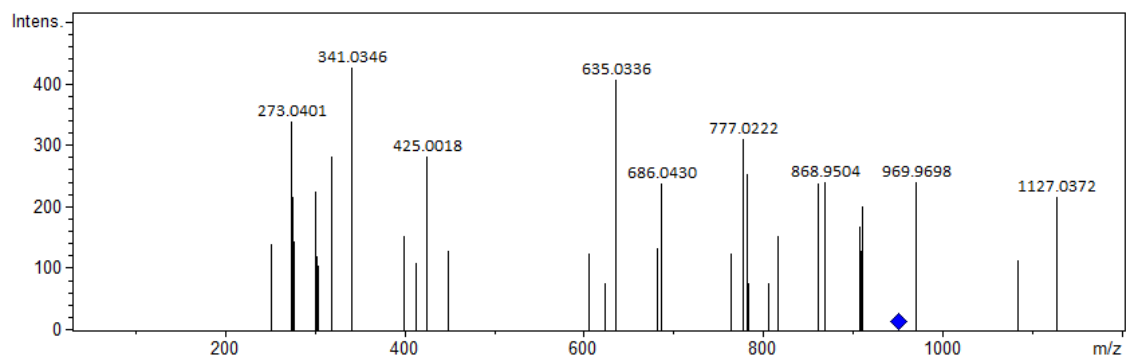
**Figure S17:** (–)-ESI-MS/MS of compound 9 ( $m/z$  331.0686  $[M - H]^-$ ) of Table 4.



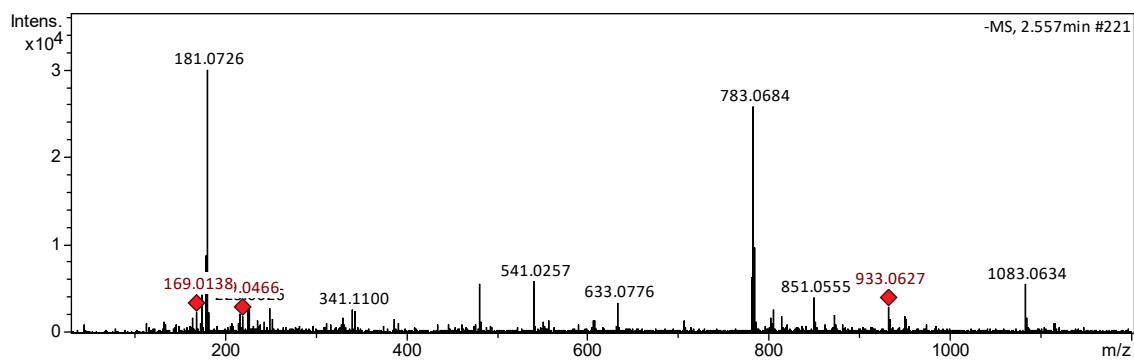
**Figure S18:** (–)-MS of compound 10 ( $m/z$  951.0784  $[M - H]^-$ ) of Table 4.



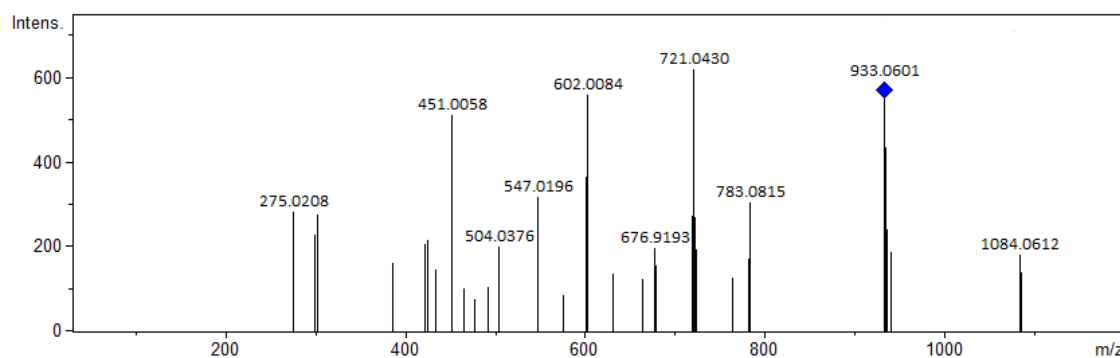
**Figure S19:** (–)-ESI-MS/MS of compound 10 ( $m/z$  951.0784  $[M - H]^-$ ) of Table 4.



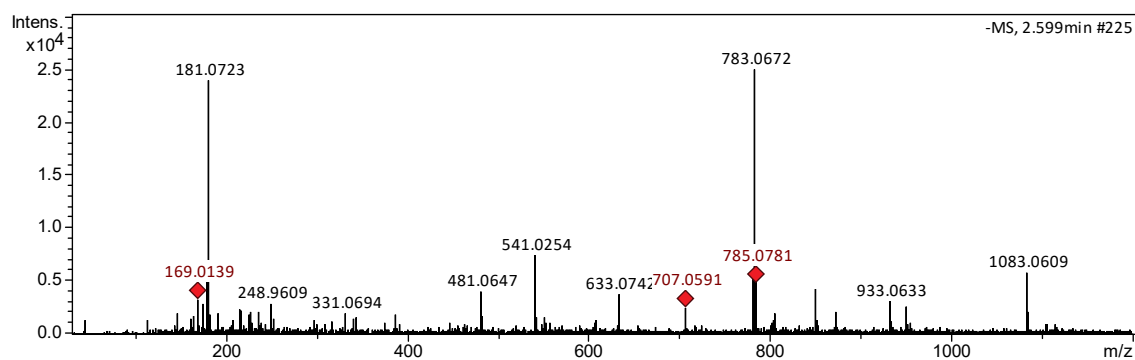
**Figure S20:** (–)-MS of compound 11 ( $m/z$  933.0627  $[M - H]^-$ ) of Table 4.



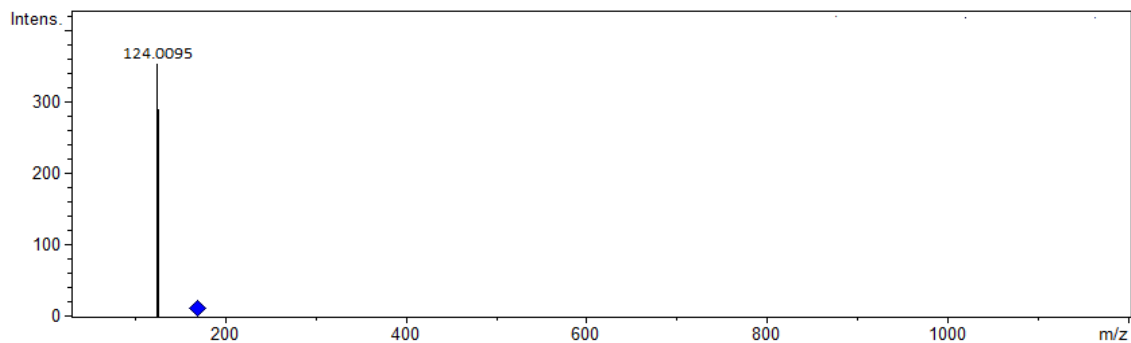
**Figure S21:** (–)-ESI-MS/MS of compound 11 ( $m/z$  933.0627 [M - H]<sup>–</sup>) of Table 4.



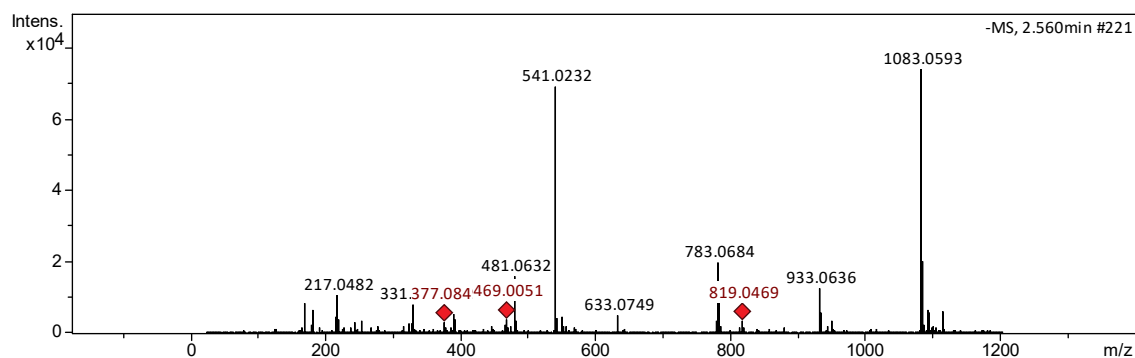
**Figure S22:** (–)-MS of compound 12 ( $m/z$  169,0139 [M - H]<sup>–</sup>) of Table 4.



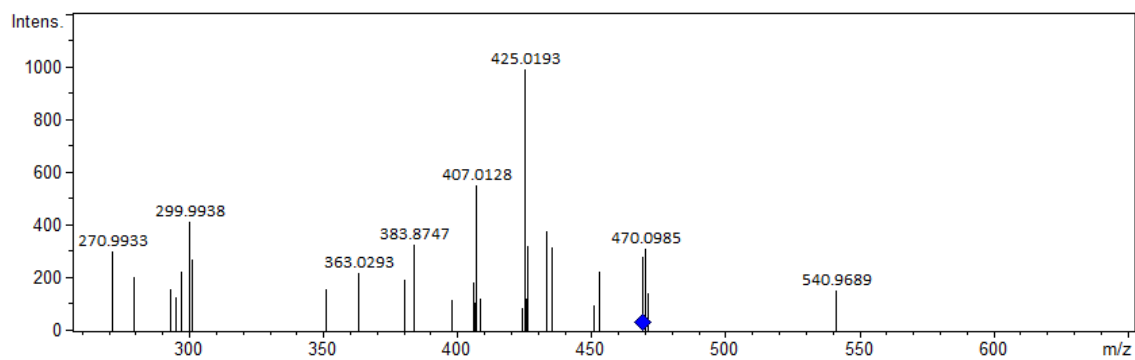
**Figure S23:** (–)-ESI-MS/MS of compound 12 ( $m/z$  169.0139 [M - H]<sup>–</sup>) of Table 4.



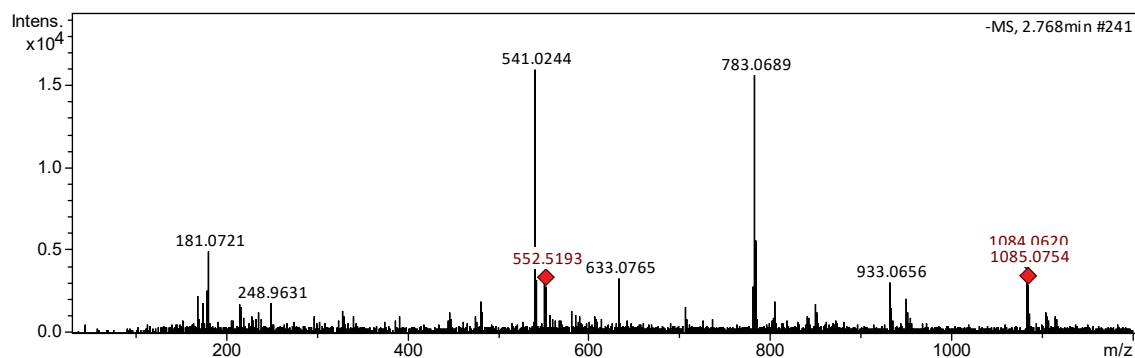
**Figure S24:** (–)-MS of compound 13 ( $m/z$  469.0051 [M - H]<sup>–</sup>) of Table 4.



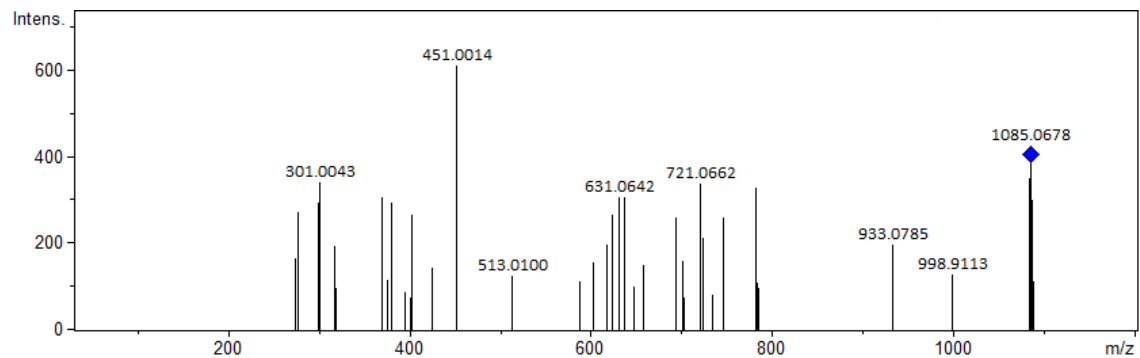
**Figure S25:** (–)-ESI-MS/MS of compound 13 ( $m/z$  469.0051  $[M - H]^-$ ) of Table 4.



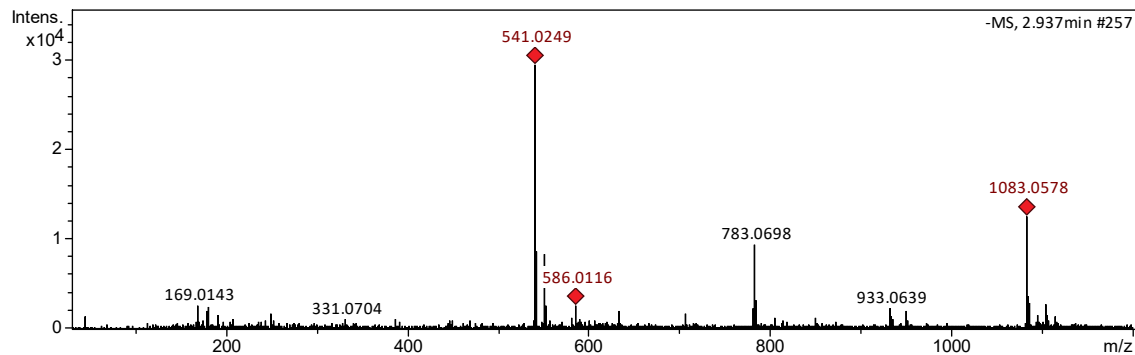
**Figure S26:** (–)-MS of compound 14 ( $m/z$  1085.0754  $[M - H]^-$ ) of Table 4.



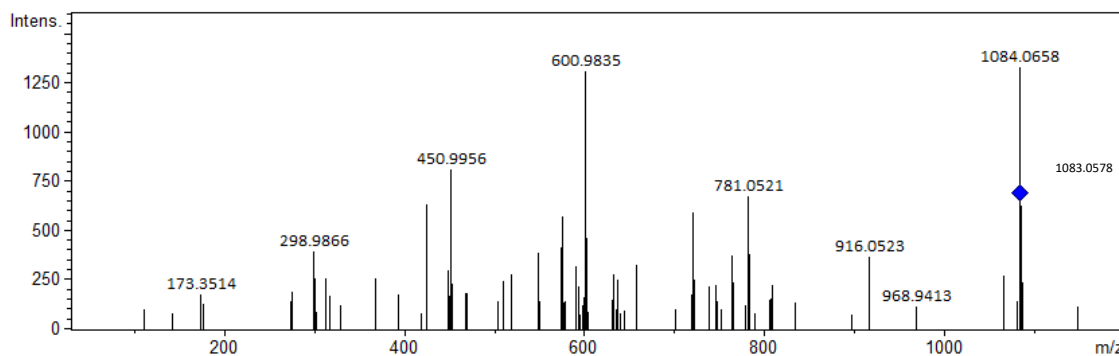
**Figure S27:** (–)-ESI-MS/MS of compound 14 ( $m/z$  1085.0754  $[M - H]^-$ ) of Table 4.



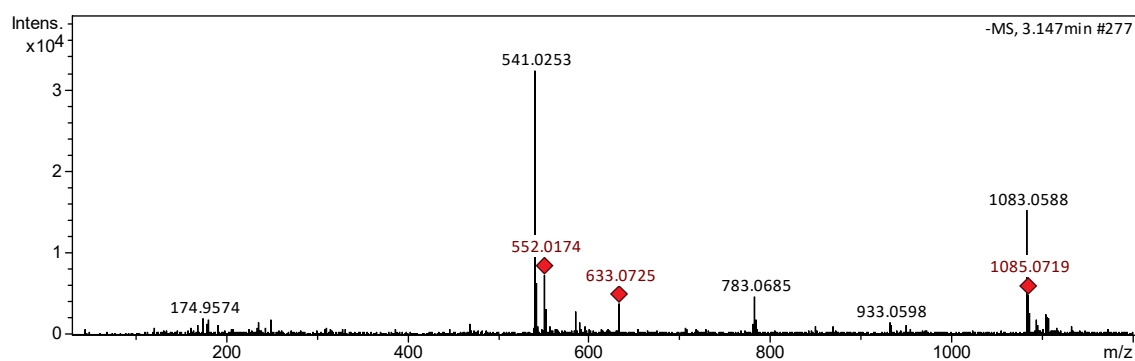
**Figure S28:** (–)-MS of compound 15 ( $m/z$  1083.0578  $[M - H]^-$ ) of Table 4.



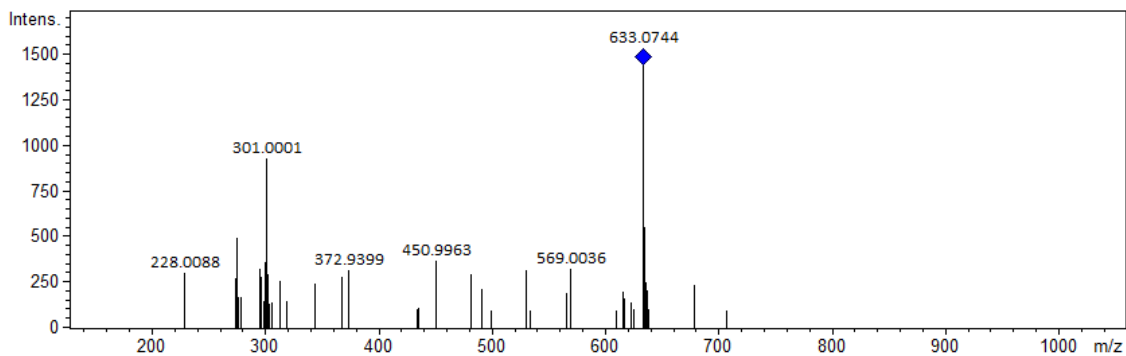
**Figure S29:** (–)-ESI-MS/MS of compound 15 ( $m/z$  1083.0578  $[M - H]^-$ ) of Table 4.



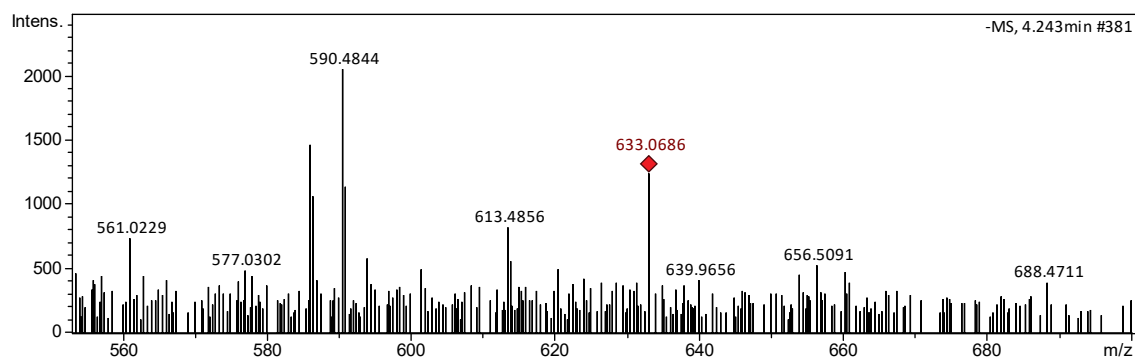
**Figure S30:** (–)-MS of compound 16 ( $m/z$  633.0725  $[M - H]^-$ ) of Table 4.



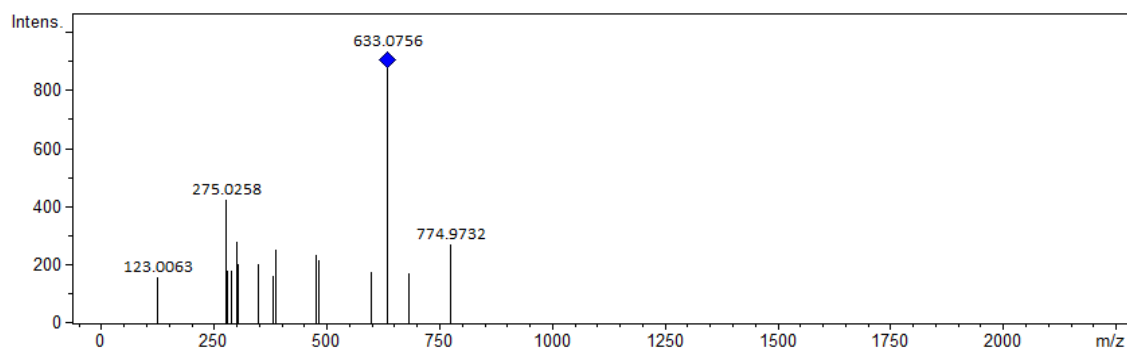
**Figure S31:** (–)-ESI-MS/MS of compound 16 ( $m/z$  633.0725  $[M - H]^-$ ) of Table 4.



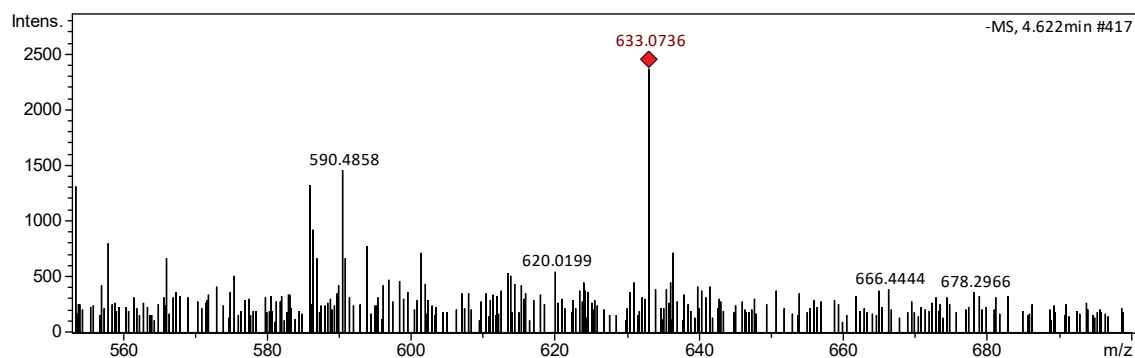
**Figure S32:** (–)-MS of compound 17 ( $m/z$  633,0686  $[M - H]^-$ ) of Table 4.



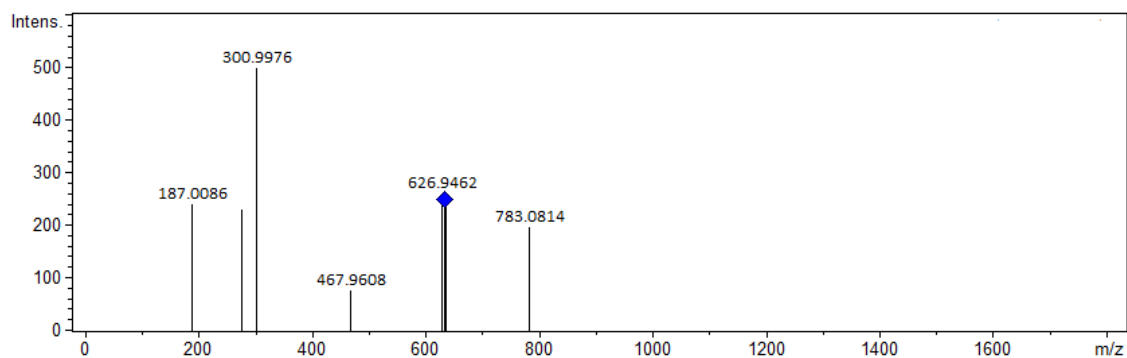
**Figure S33:** (–)-ESI-MS/MS of compound 17 ( $m/z$  633.0686[M - H]<sup>–</sup>).



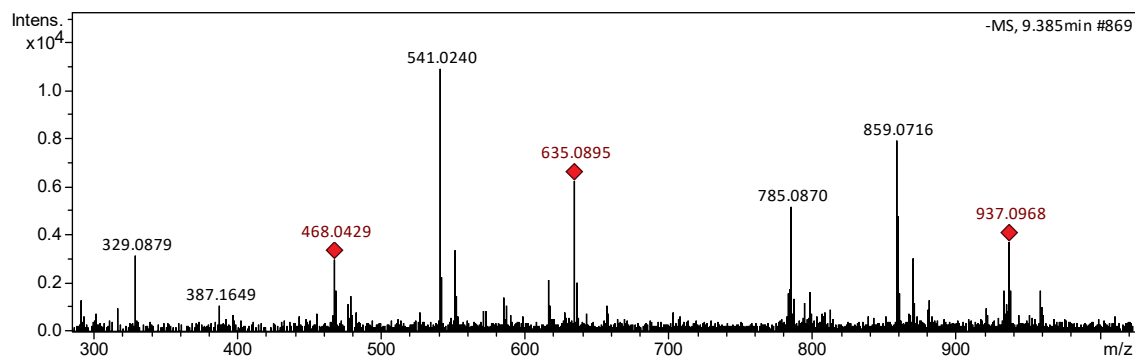
**Figure S34:** (–)-MS of compound 18 ( $m/z$  633.0736 [M - H]<sup>–</sup>) of Table 4.



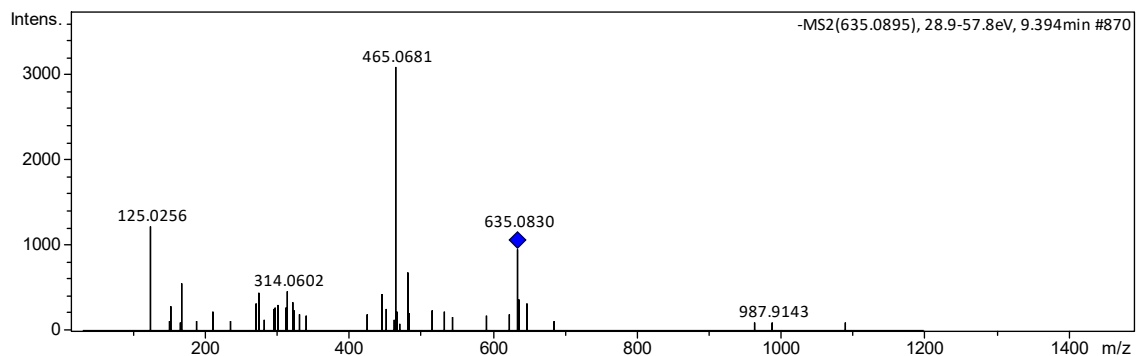
**Figure S35:** (–)-ESI-MS/MS of compound 18 ( $m/z$  633.0736 [M - H]<sup>–</sup>) of Table 4.



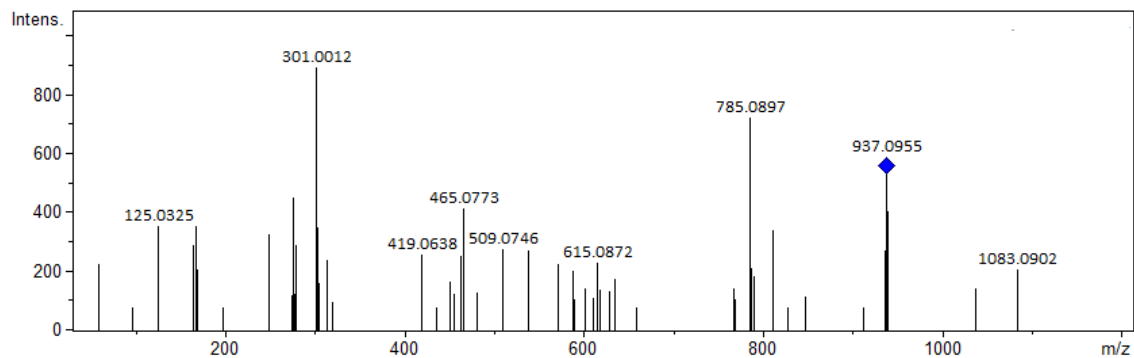
**Figure S36:** (–)-MS of compounds 19 and 20 ( $m/z$  635.0895 e  $m/z$  937.0968 [M - H]<sup>–</sup>) of Table 4.



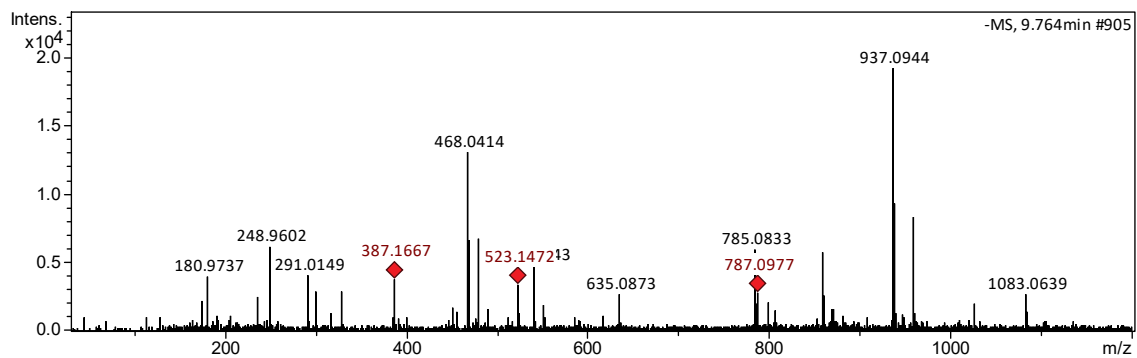
**Figure S37:** (–)-ESI-MS/MS of compound 19 ( $m/z$  635.0895 [ $M - H$ ] $^-$ ) of Table 4.



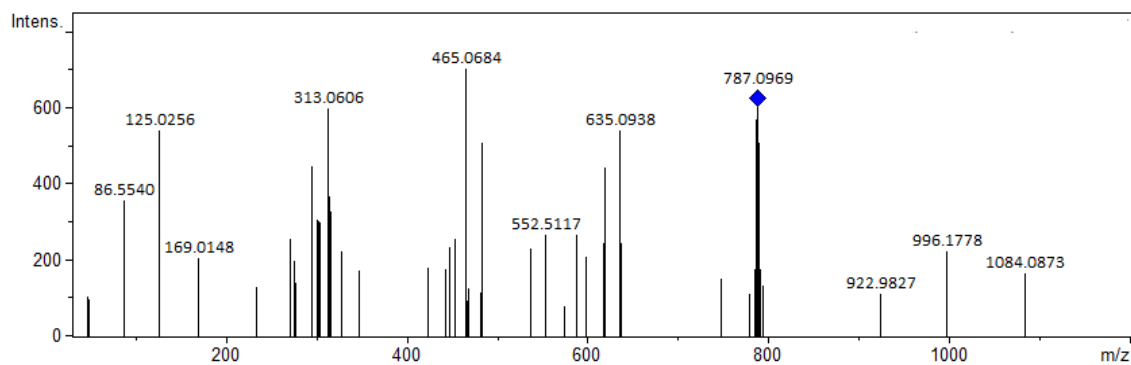
**Figure S38:** (–)-ESI-MS/MS of compound 20 ( $m/z$  937.0968 [ $M - H$ ] $^-$ ) of Table 4.



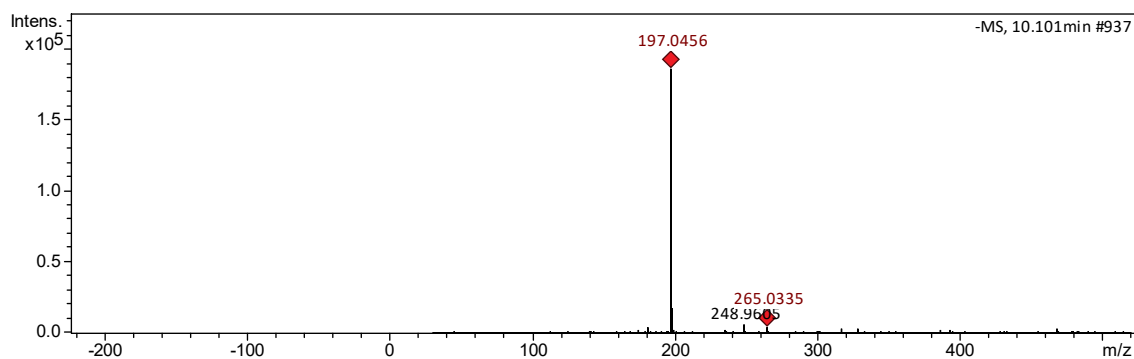
**Figure S39:** (–)-MS of compound 21 ( $m/z$  787.0977 [ $M - H$ ] $^-$ ) of Table 4.



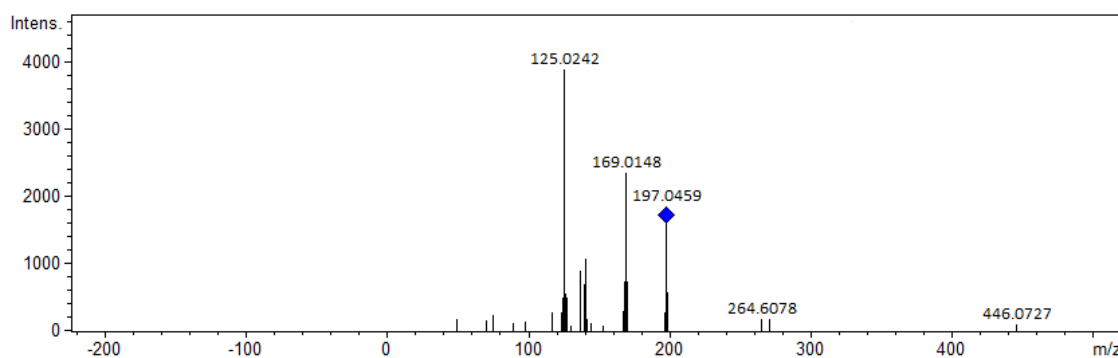
**Figure S40:** (–)-ESI-MS/MS of compound 21 ( $m/z$  787.0977 [ $M - H$ ] $^-$ ) of Table 4.



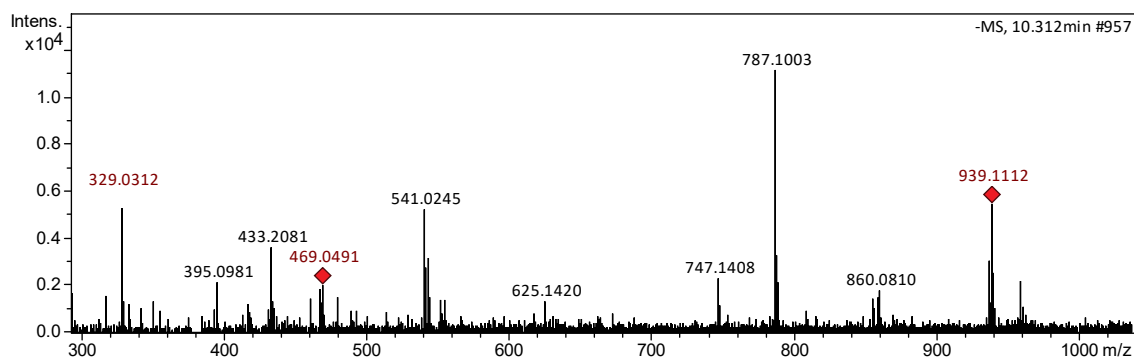
**Figure S41:** (–)-MS of compound 22 ( $m/z$  197.0456 [M - H]<sup>–</sup>) of Table 4.



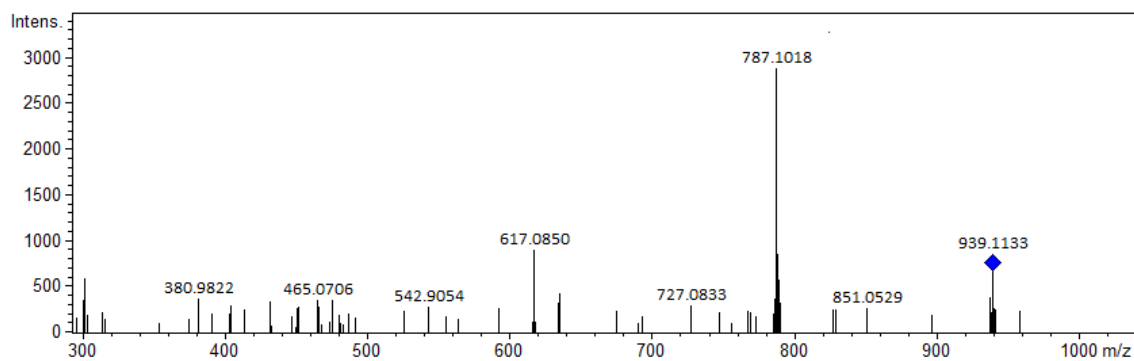
**Figure S42:** (–)-ESI-MS/MS of compound 22 ( $m/z$  197.0456 [M - H]<sup>–</sup>) of Table 4.



**Figure S43:** (–)-MS of compound 23 ( $m/z$  939.1112 [M - H]<sup>–</sup>) of Table 4.

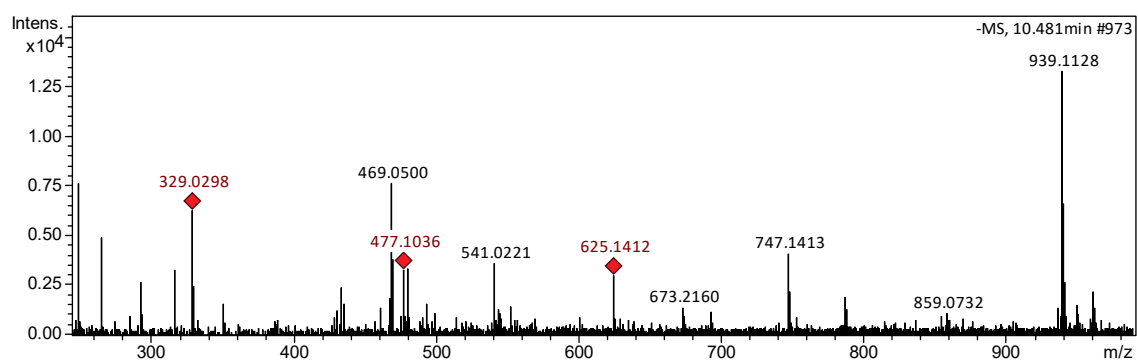


**Figure S44:** (–)-ESI-MS/MS of compound 23 ( $m/z$  939.1112 [M - H]<sup>–</sup>) of Table 4.

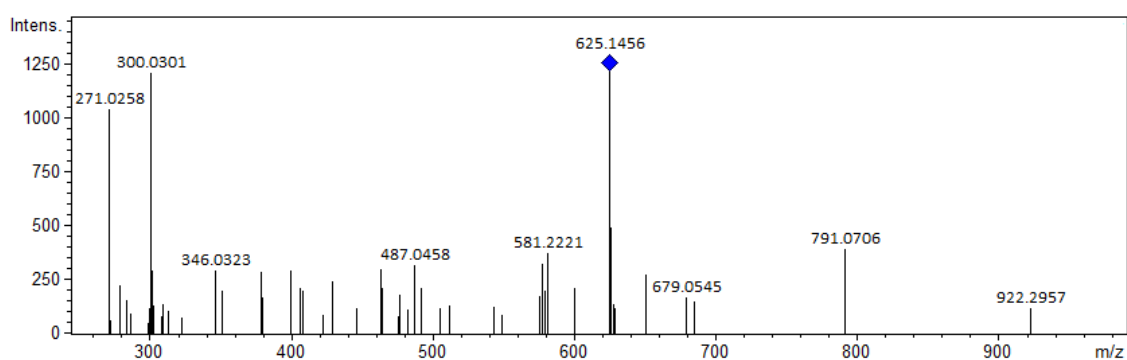


**Figure S45:** (–)-MS of compounds 24 and 25 ( $m/z$  625.1412 e  $m/z$  477.1036  $[M - H]^-$ ) of

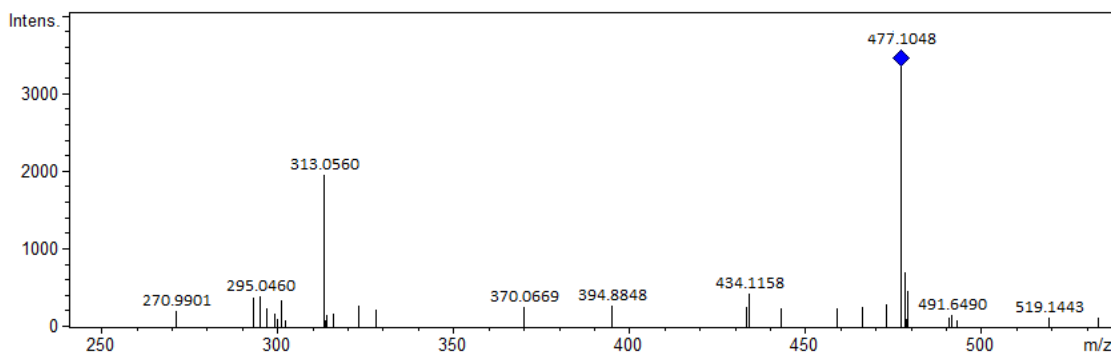
Table 4



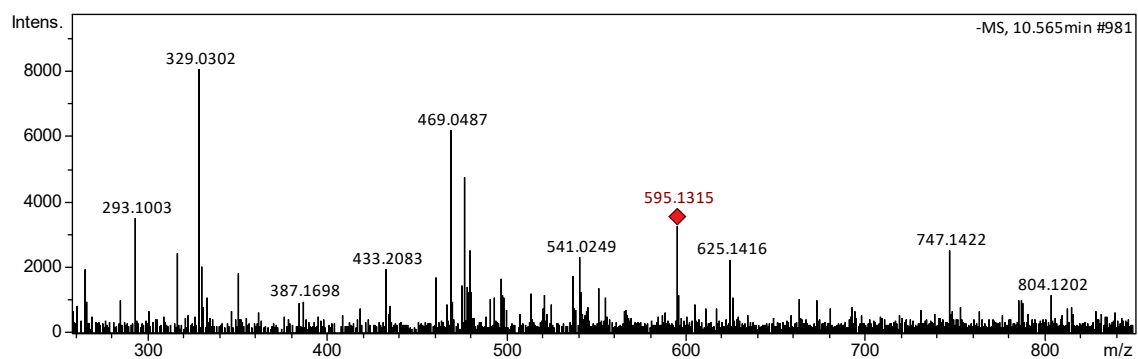
**Figure S46:** (–)-ESI-MS/MS of compound 24 ( $m/z$  625.1412  $[M - H]^-$ ) of Table 4.



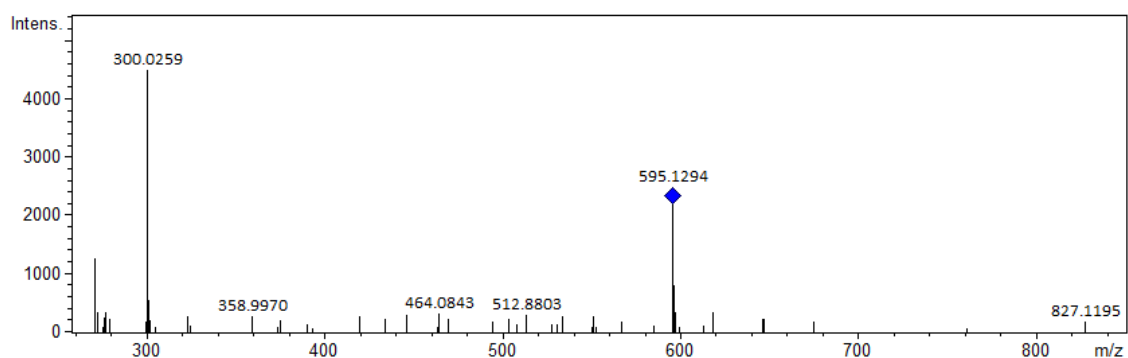
**Figure S47:** (–)-ESI-MS/MS of compound 25 ( $m/z$  477.1036  $[M - H]^-$ ) of Table 4.



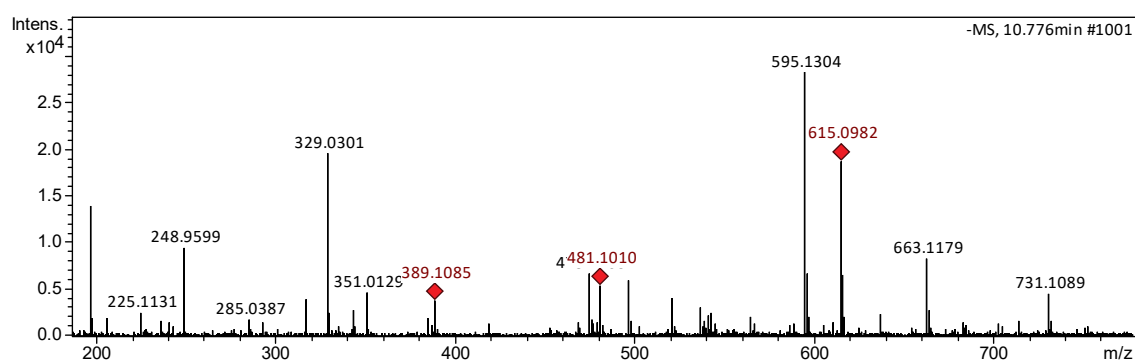
**Figure S48:** (–)-MS of compound 26 ( $m/z$  595.1315  $[M - H]^-$ ) of Table 4.



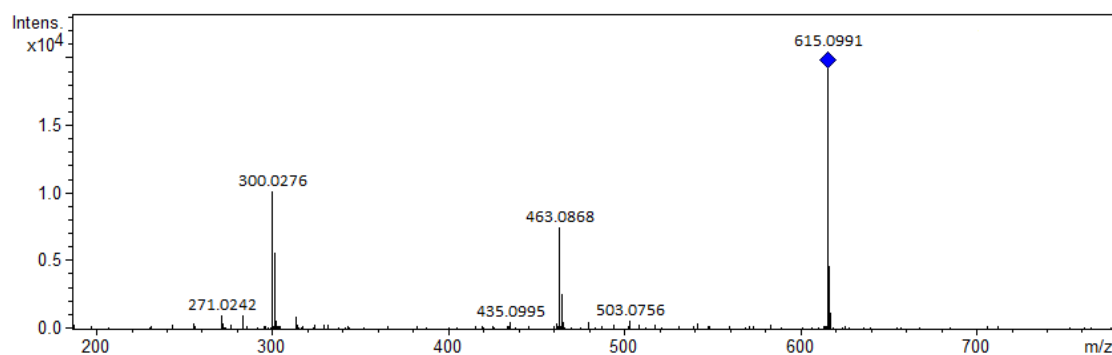
**Figure S49:** (–)-ESI-MS/MS of compound 26 ( $m/z$  595.1315  $[M - H]^-$ ) of Table 4.



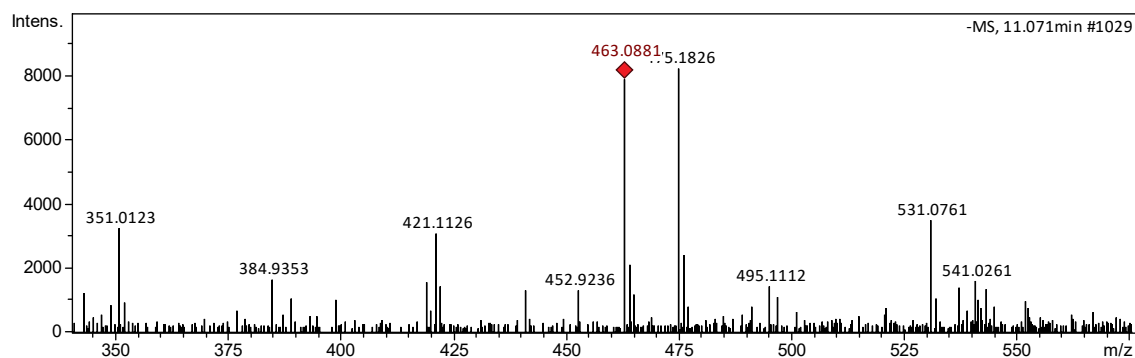
**Figure S50:** (–)-MS of compound 27 ( $m/z$  615.0982  $[M - H]^-$ ) of Table 4.



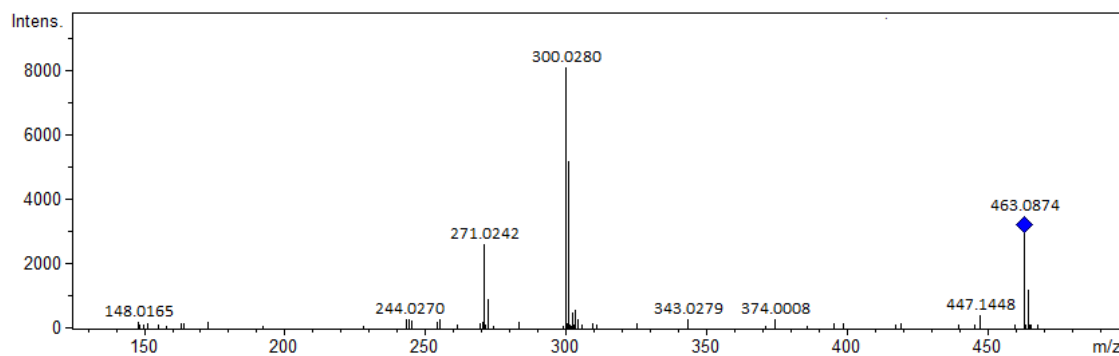
**Figure S51:** (–)-ESI-MS/MS of compound 27 ( $m/z$  615.0982  $[M - H]^-$ ) of Table 4.



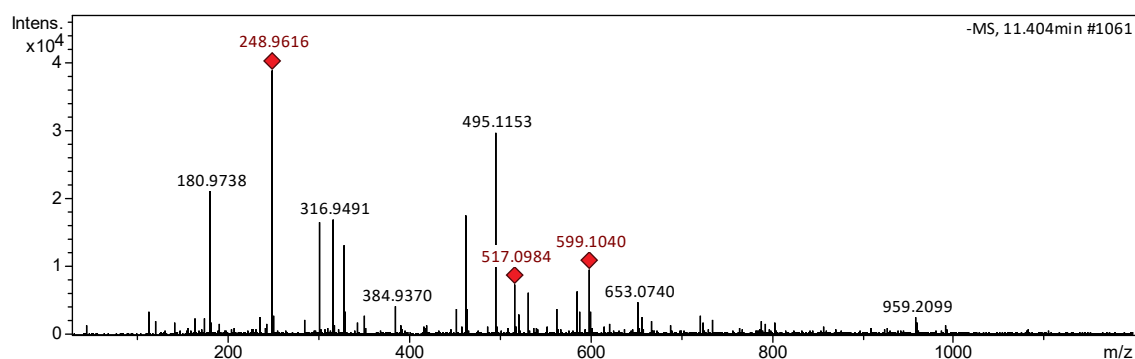
**Figure S52:** (–)-MS of compound 28 ( $m/z$  463.0881  $[M - H]^-$ ) of Table 4.



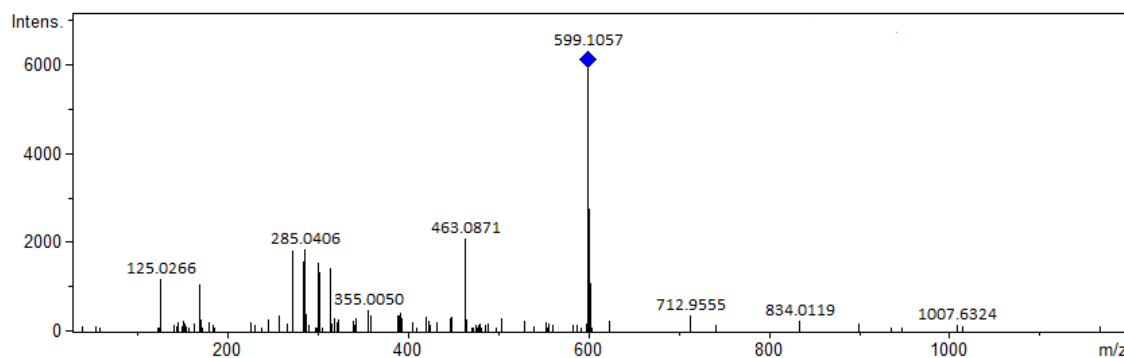
**Figure S53:** (–)-ESI-MS/MS of compound 28 ( $m/z$  615.0982 [M - H]<sup>–</sup>) of Table 4.



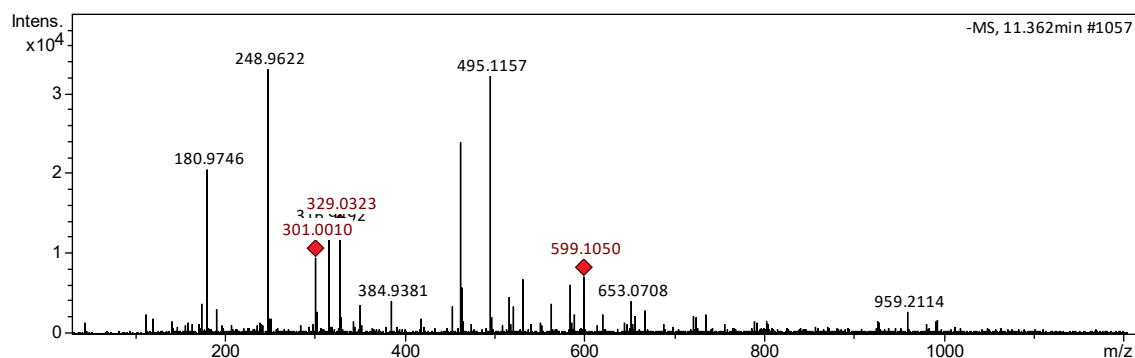
**Figure S54:** (–)-MS of compound 29 ( $m/z$  599.1040 [M - H]<sup>–</sup>) of Table 4.



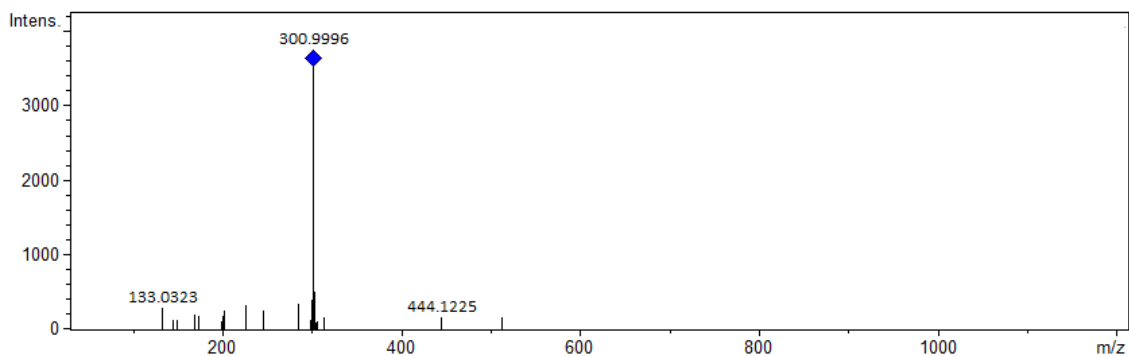
**Figure S55:** (–)-ESI-MS/MS of compound 29 ( $m/z$  599.1040 [M - H]<sup>–</sup>) of Table 4.



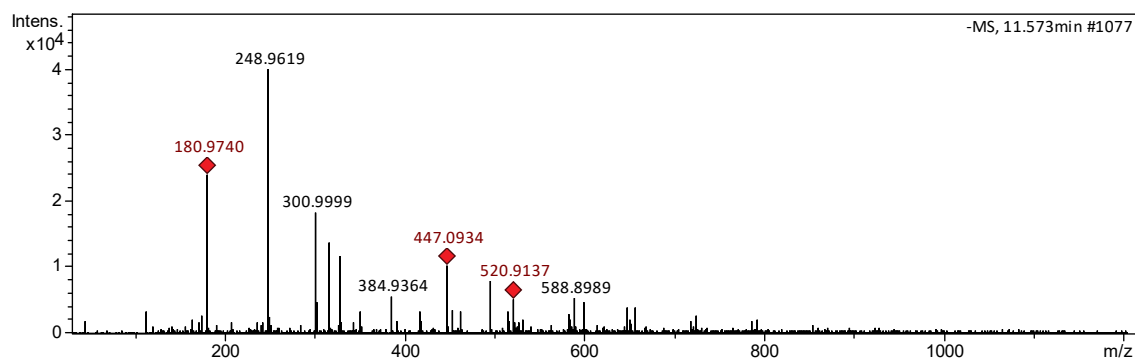
**Figure S56:** (–)-MS of compound 30 ( $m/z$  301.0010 [M - H]<sup>–</sup>) of Table 4.



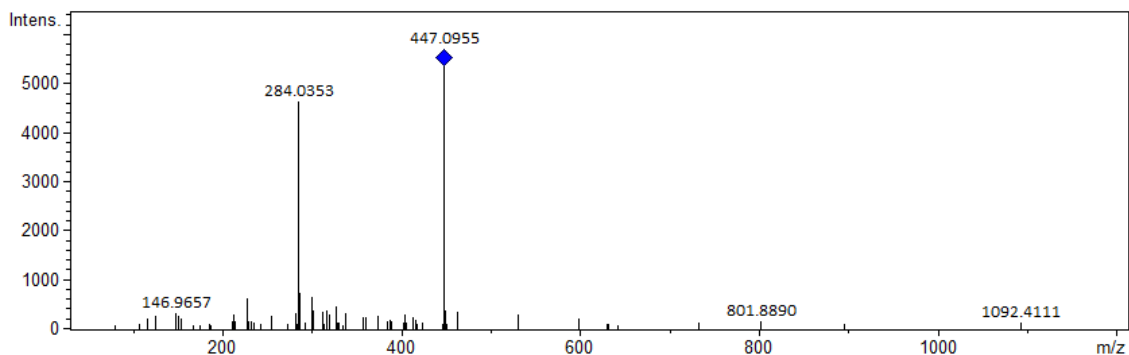
**Figure S57:** (-)-ESI-MS/MS of compound 30 ( $m/z$  301.0010  $[M - H]^-$ ) of Table 4.



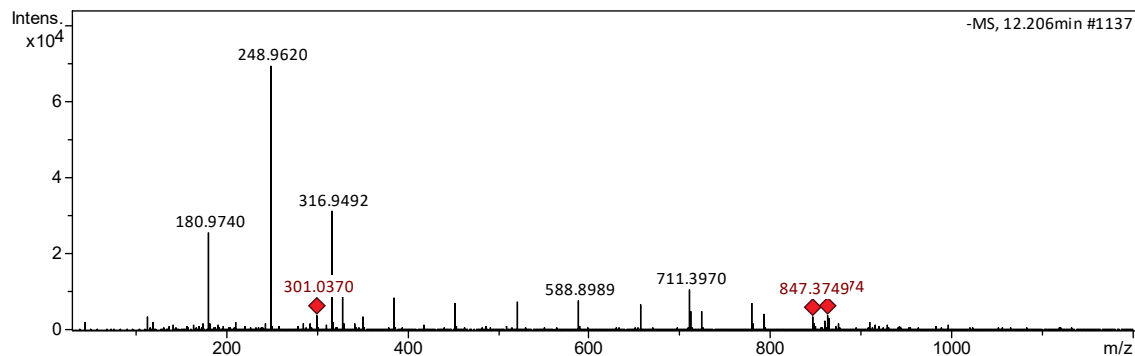
**Figure S58:** (-)-MS of compound 31 ( $m/z$  447.0934  $[M - H]^-$ ) of Table 4.



**Figure S59:** (-)-ESI-MS/MS of compound 31 ( $m/z$  447.0934  $[M - H]^-$ ) of Table 4.



**Figure S60:** (-)-MS of compound 32 ( $m/z$  301.370  $[M - H]^-$ ) of Table 4.



**Figure S61:** (–)-ESI-MS/MS of compound 32 ( $m/z$  301.0370  $[M - H]^-$ ) of Table 4.

