

Supplementary Figures

Volatilomics and Macro-Composition Analyses of Wuyi Rock Primary Teas of Rougui and Shuixian Cultivars from Different Production Areas

Lixuan Zhang ¹, Chengzhe Zhou ¹, Cheng Zhang ¹, Mengcong Zhang ¹, and Yuqiong Guo ^{1,3,4,*}

¹ Anxi College of Tea Science, College of Horticulture, Fujian Agriculture and Forestry University, Fuzhou 350002, China

² Tea Green Cultivation and Processing Collaborative Innovation Center, Anxi County, Quanzhou, 362400, China

³ Tea Industry Research Institute, Fujian Agriculture and Forestry University, Fuzhou 350002, China

* Correspondence: guoyq828@163.com

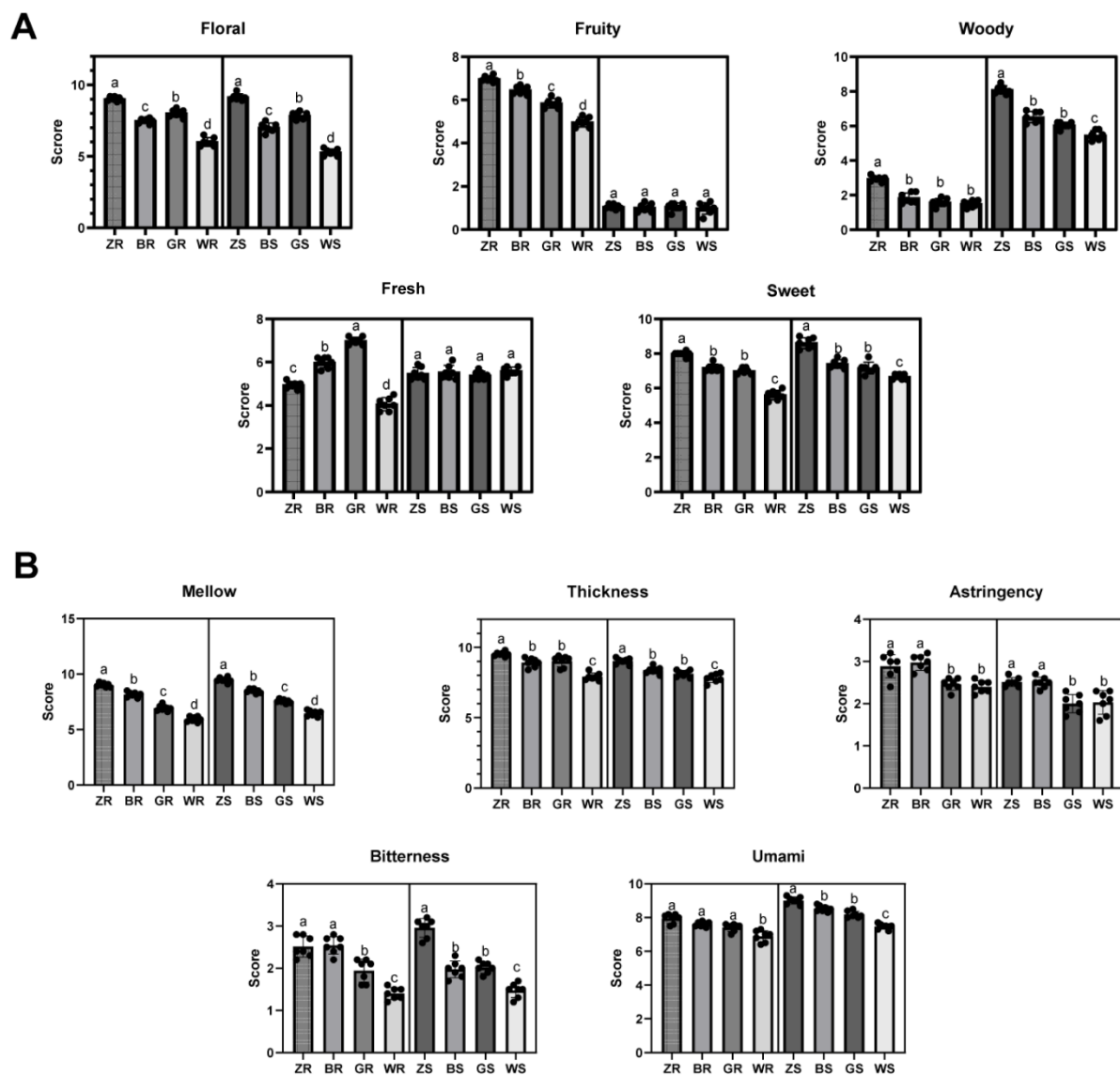


Figure S1. The significant difference analysis of aroma (A) and taste (B) attributes in ‘Rougui’ and ‘Shuixian’ PWRTs from different production areas. The various small letters represent significant differences ($p < 0.05$).

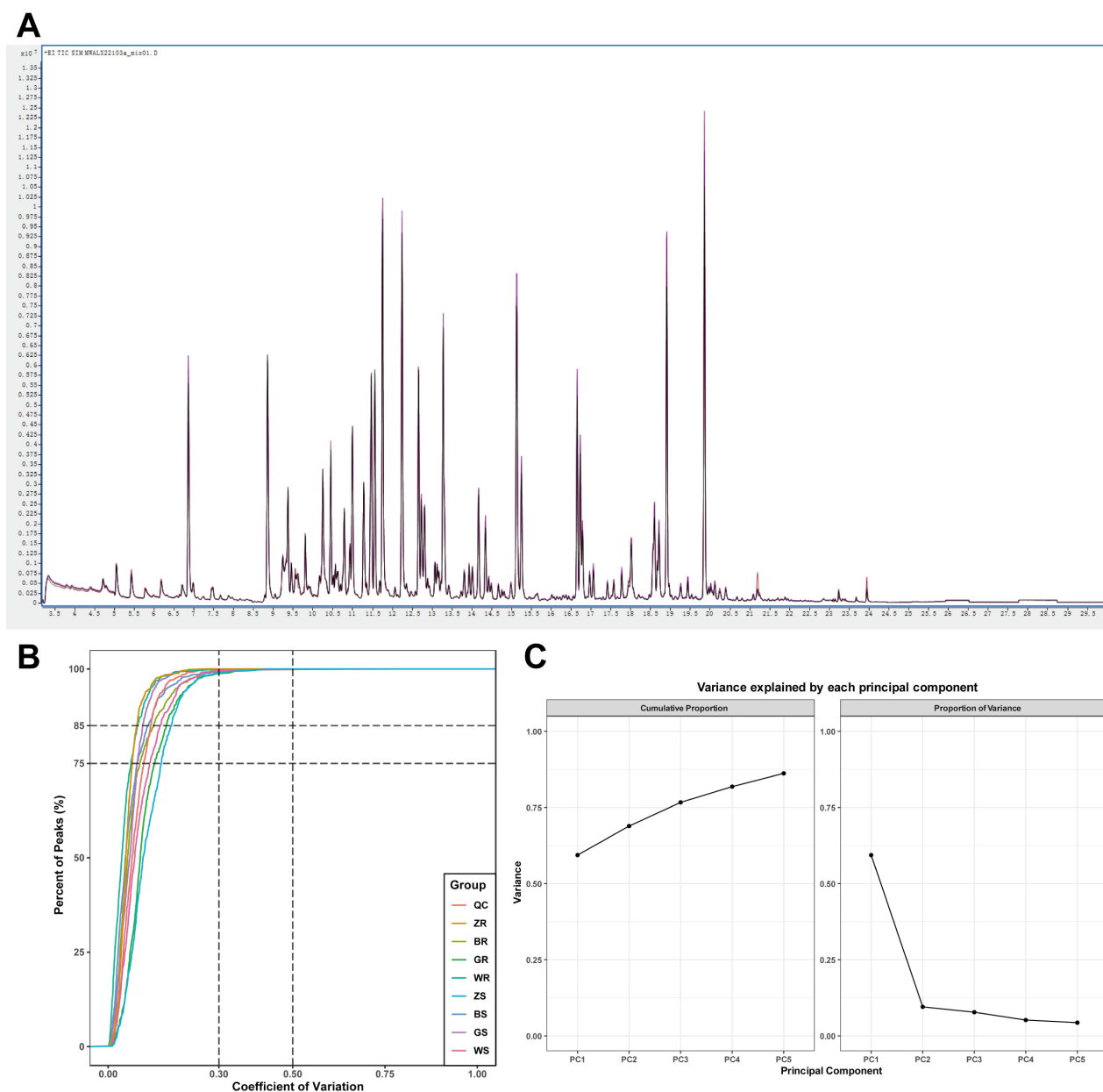


Figure S2. Sample quality control analysis for volatile determination. **(A)** Total ion chromatogram of mass spectrometry analysis of the mixed sample for quality control. **(B)** Coefficient of variation analysis. **(C)** The proportion of variance for the first five principal components from PCA model.