

Figure S1. Transcript and unigene length distribution.

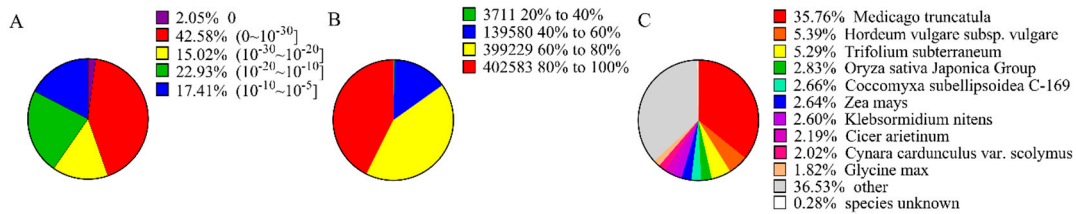


Figure S2. Performing unigene homology searches in the Nr database: A. The proportional frequency of the E-value distribution. B. The proportional frequency of the sequence similarity distribution. C. The proportional species distribution of *M. sativa*. among other plant species.

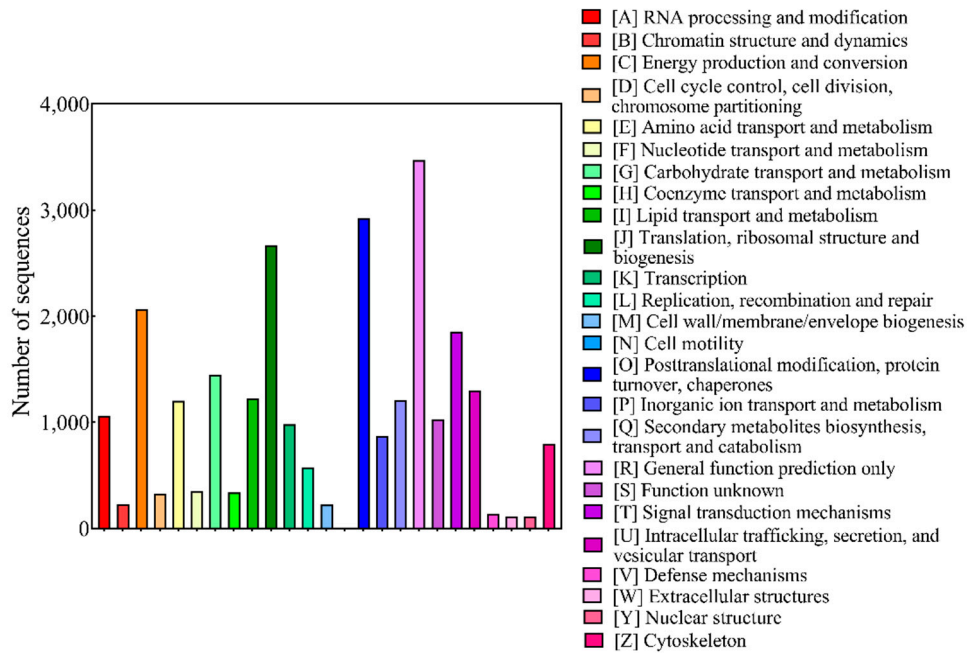


Figure S3. KOG function classification of unigenes for *M. sativa*. The left y-axis indicates the number of unigenes; the letters on the x-axis represent different KOG categories.