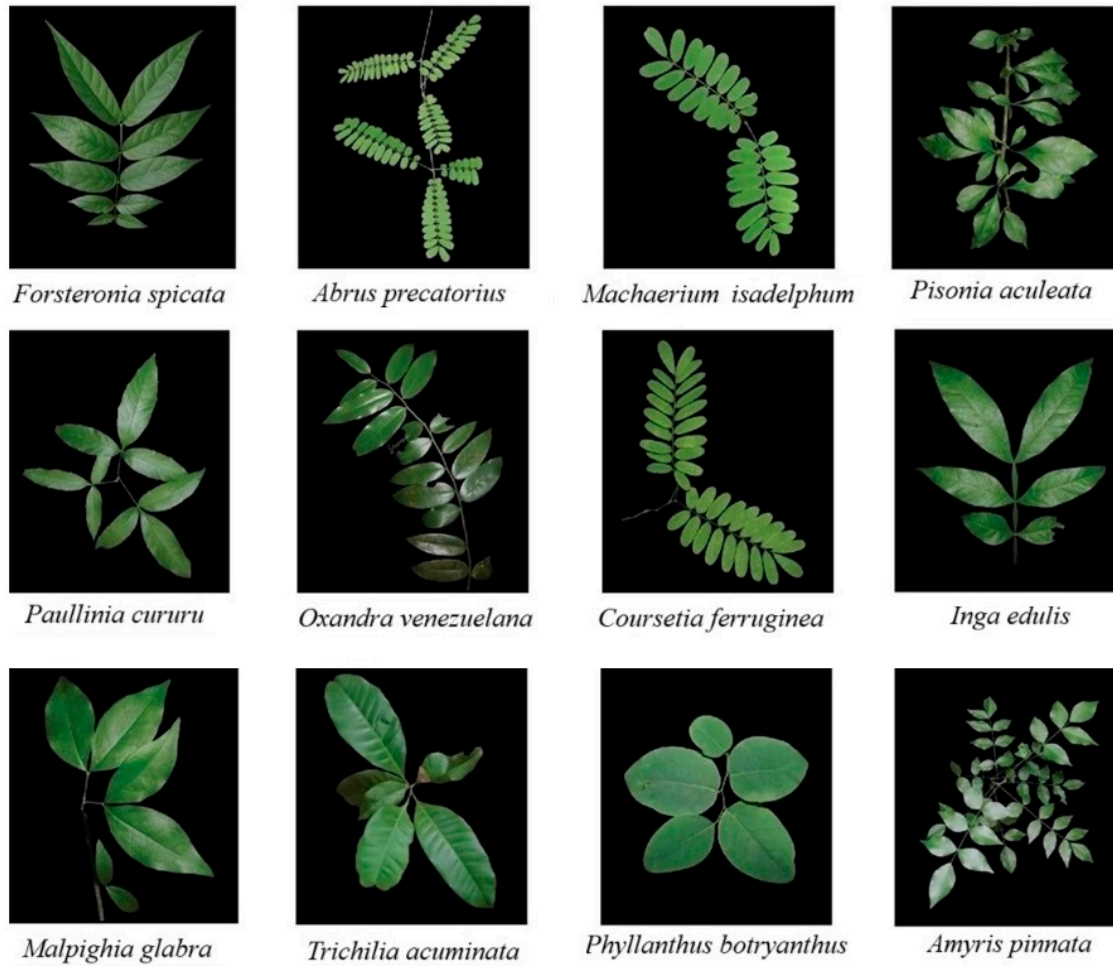
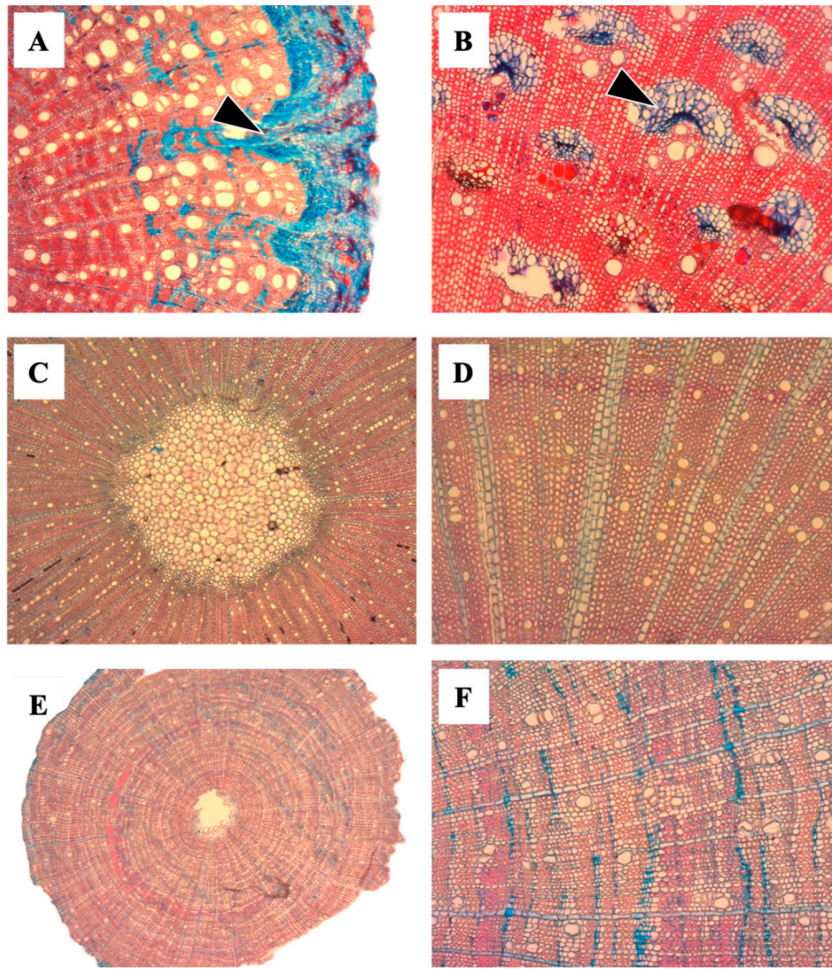


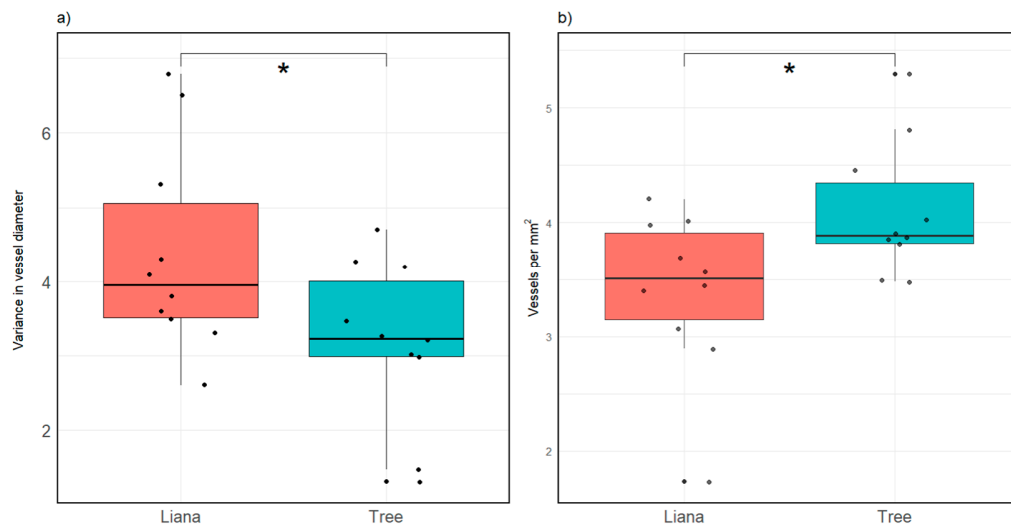
## SUPPORTING INFORMATION



**Figure S1.** Species selected for analysis. See Table 4 for more information.



**Figure S2.** Anatomical images of four liana seedling species. A) Phloem edges (black head arrow) in *Abrus precatorius*; B) groups of internal phloem (black head arrow) in *Pisonia aculeata*; C-D) cross-sections of *Bignonia pterocalyx* with no phloem wedges typical of Bignoniaceae lianas; E-F) *Machaerium isadelphum*: with a rounded stem and no successive cambia respectively.



**Figure S3.** t-test comparison of a) variance in vessel diameter and b) vessel density. \* = significance (alpha = 0.05).

**Table S1.** Summary of wood traits measured on seedlings of the 20 species selected. Mean, standard deviation, and range are shown.

Trait	mean	sd	range
Axial parenchyma fraction	24.39	15.2	0.45 - 53.92
Mean hydraulically weighted vessel diameter	47.28	23.97	16.8 - 143.89
Horizontal pit membrane diameter aperture	7.51	2.03	4.51 - 13.14
Fiber fraction	5.1	16.08	17.88 - 85.44
Fiber wall thickness	3.68	1.36	0 - 8.89
Radial parenchyma fraction	14.84	9.02	3.26 - 47.2
Total parenchyma fraction	38.04	15.61	5.37 - 72.21
Variance in vessel diameter	121.22	231.13	3.72 - 885.35
Vessel clustering index	1.38	0.89	0.25 - 5.56
Vessel density	59.93	46.18	3.05 - 238.48
Vessel fraction	7.86	5.59	2.59 - 36.33
Wood density	0.56	0.11	0.02 - 0.81