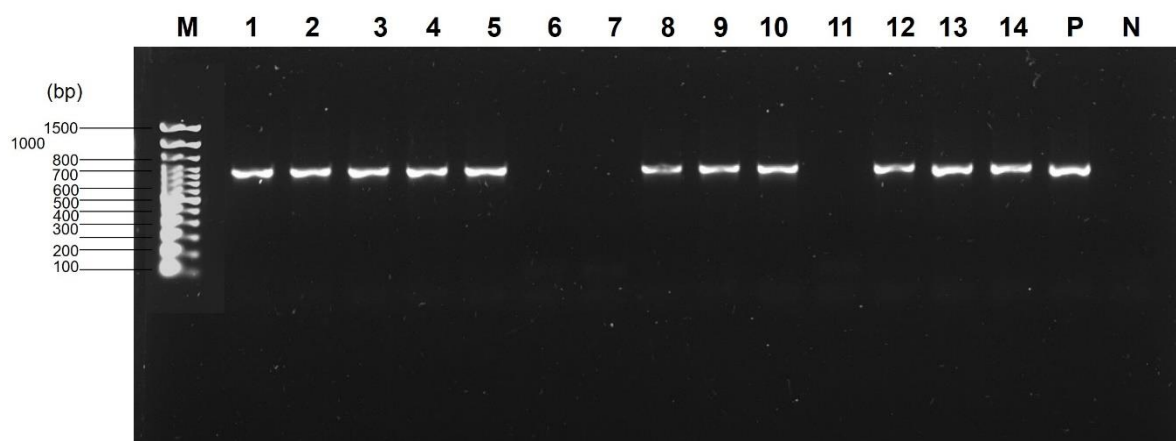


Supplements Materials

Impact of Cassava Cultivars on Stylet Penetration Behavior and Settling of *Bemisia tabaci* Gennadius (Hemiptera: Aleyrodidae)



Supplemental Figure S1.

PCR products of the AV1 gene using SLCMV specific primers. DNA gel electrophoresis of PCR amplification from cassava samples



Supplemental Figure S2.

The adult whitefly was connected to a gold wire electrode (2.5 cm long, 12 μm diameter).