

Article

Glycolipids Derived from the Korean Endemic Plant *Aruncus aethusifolius* Inducing Glucose Uptake in Mouse Skeletal Muscle C2C12 Cells

Jong Gwon Baek ^{1,2,†}, Do Hwi Park ^{3,†}, Ngoc Khanh Vu ^{1,†}, Charuvaka Muvva ¹, Hoseong Hwang ¹, Sungmin Song ¹, Hyeon-Seong Lee ¹, Tack-Joong Kim ², Hak Cheol Kwon ^{1,2}, Keunwan Park ^{1,*}, Ki Sung Kang ^{3,*} and Jaeyoung Kwon ^{1,4,*}

List of supporting information

Figure S1. ¹H NMR spectrum of compound **1** (500 MHz, methanol-*d*₄).

Figure S2. ¹³C NMR spectrum of compound **1** (125 MHz, methanol-*d*₄).

Figure S3. HSQC spectrum of compound **1** (methanol-*d*₄).

Figure S4. HMBC spectrum of compound **1** (methanol-*d*₄).

Figure S5. ¹H-¹H COSY spectrum of compound **1** (methanol-*d*₄).

Figure S6. DEPT spectrum of compound **1** (methanol-*d*₄).

Figure S7. HRESIMS spectrum of compound **1**.

Figure S8. ¹H NMR spectrum of compound **2** (500 MHz, methanol-*d*₄).

Figure S9. ¹³C NMR spectrum of compound **2** (125 MHz, methanol-*d*₄).

Figure S10. HSQC spectrum of compound **2** (methanol-*d*₄).

Figure S11. HMBC spectrum of compound **2** (methanol-*d*₄).

Figure S12. ¹H-¹H COSY spectrum of compound **2** (methanol-*d*₄).

Figure S13. HRESIMS spectrum of compound **2**.

Figure S14. ¹H NMR spectrum of compound **2-1** (500 MHz, methanol-*d*₄).

Figure S15. ¹³C NMR spectrum of compound **2-1** (125 MHz, methanol-*d*₄).

Figure S16. HSQC spectrum of compound **2-1** (methanol-*d*₄).

Figure S17. HMBC spectrum of compound **2-1** (methanol-*d*₄).

Figure S18. ¹H-¹H COSY spectrum of compound **2-1** (methanol-*d*₄).

Figure S19. DEPT spectrum of compound **2-1** (methanol-*d*₄).

Figure S20. HRESIMS spectrum of compound **2-1**.

Figure S21. Sugar determination of compounds **1** and **2** by HPLC analysis.

Figure S22. Cytotoxicity test of fractions and compounds

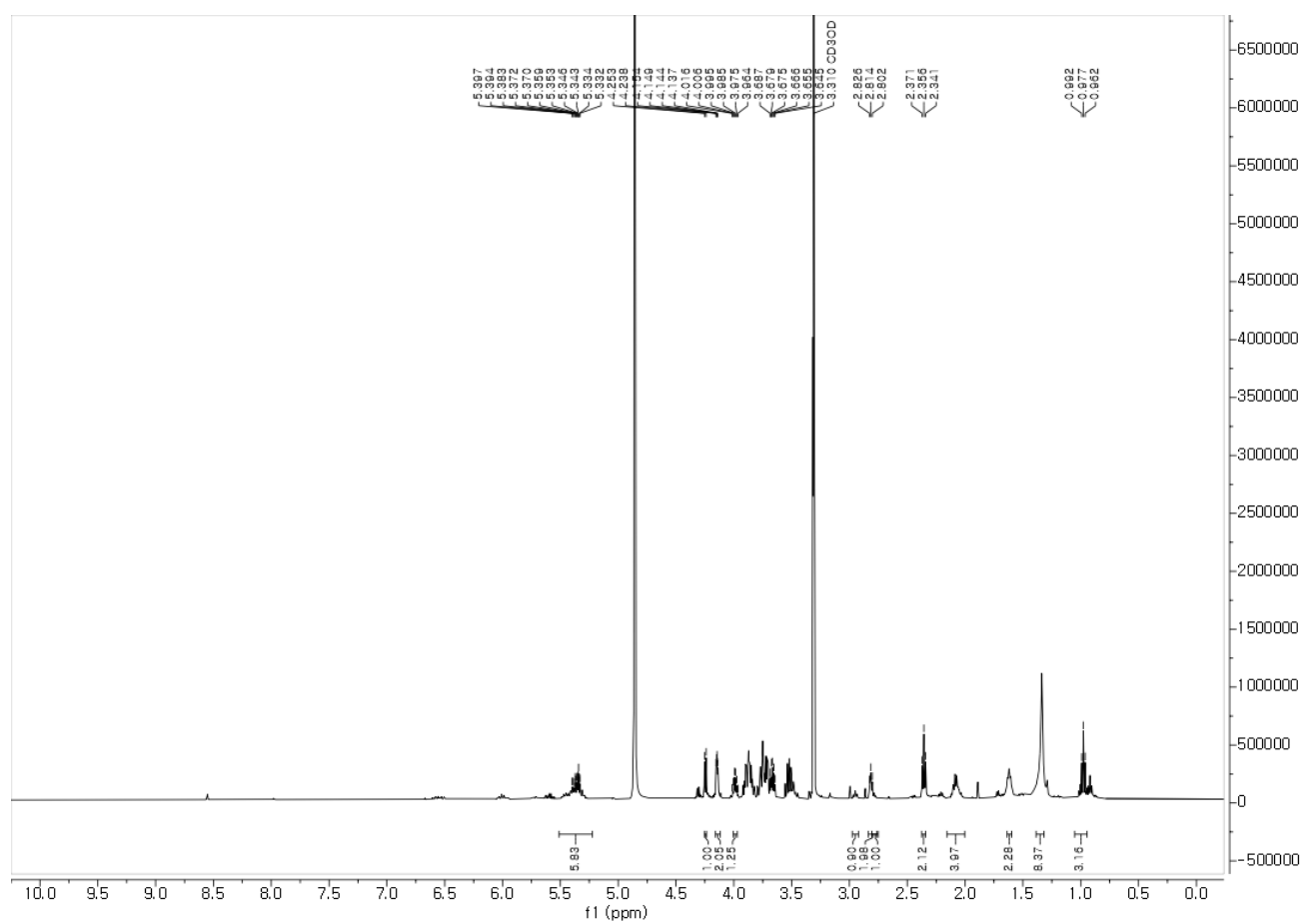


Figure S1. ^1H NMR spectrum of compound **1** (500 MHz, methanol- d_4).

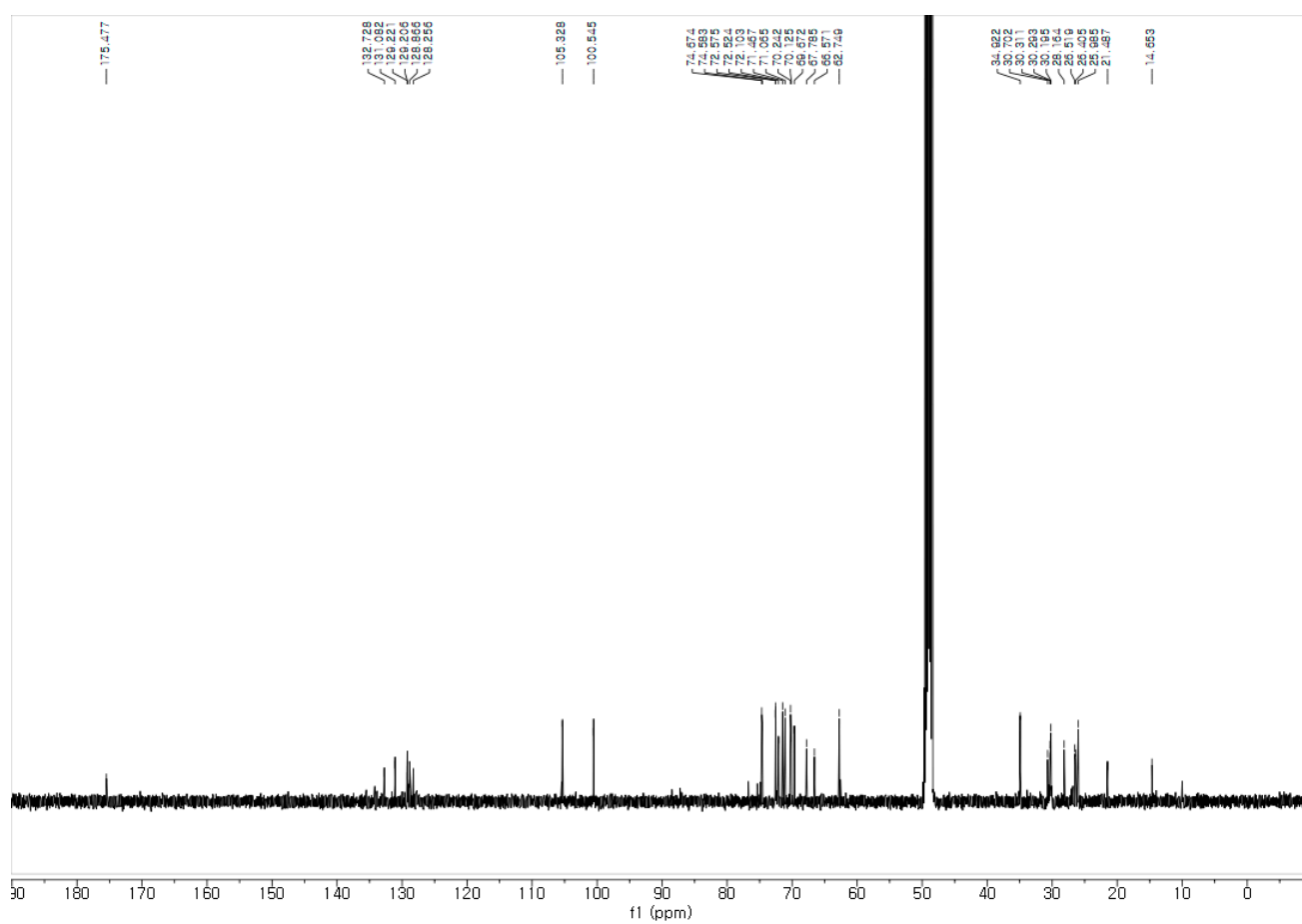


Figure S2. ^{13}C NMR spectrum of compound **1** (125 MHz, methanol- d_4).

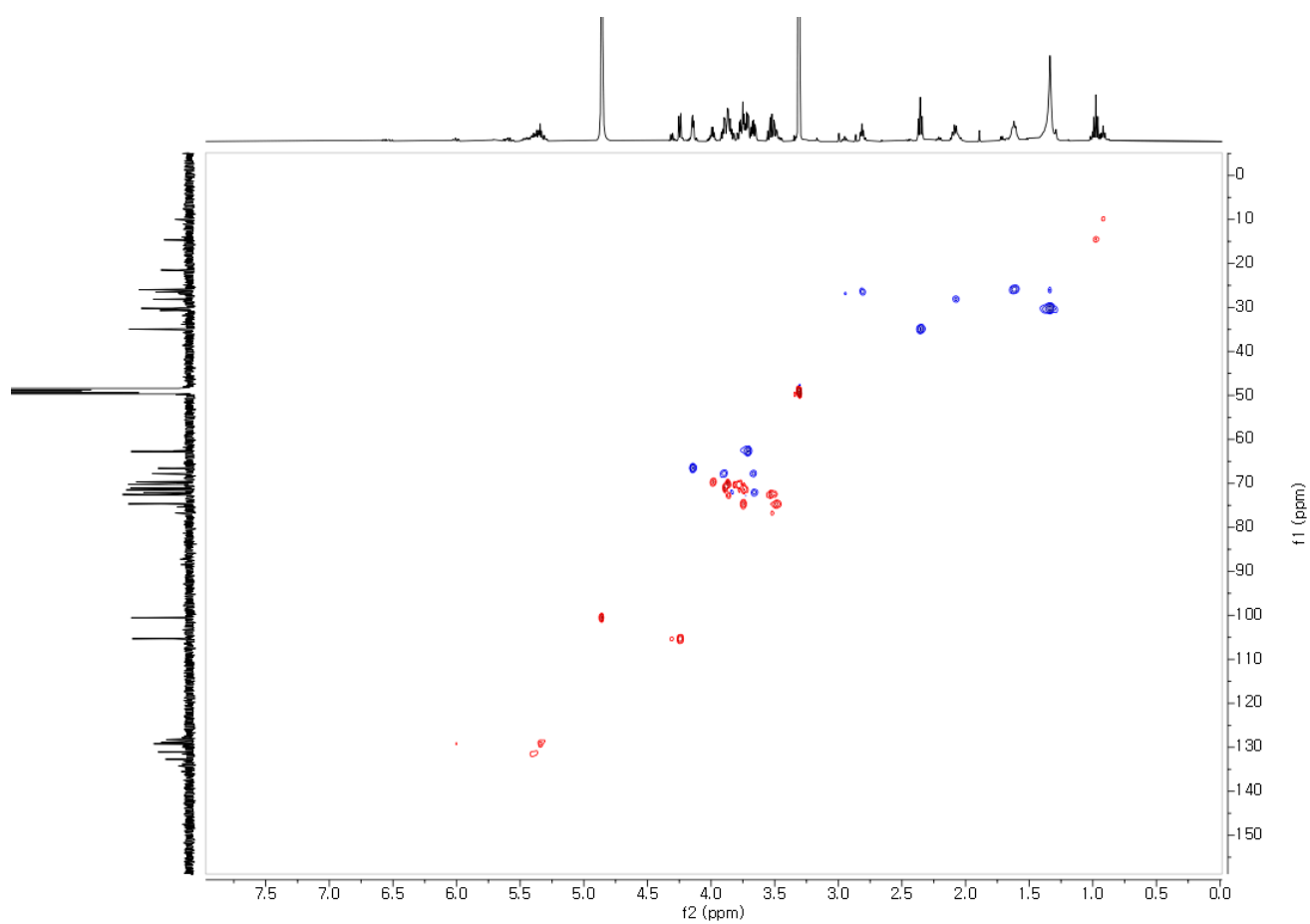


Figure S3. HSQC spectrum of compound 1 (methanol- d_4).

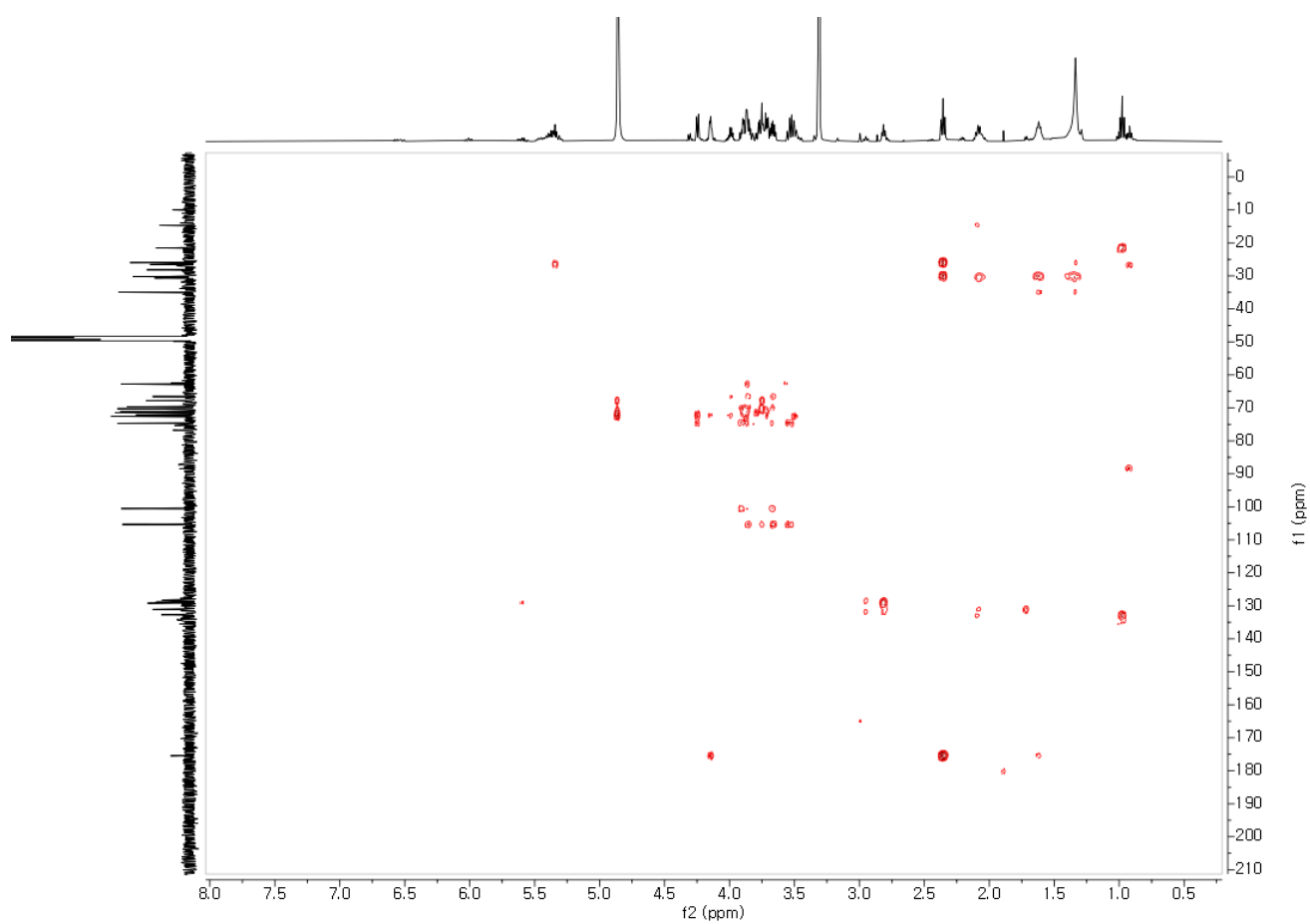


Figure S4. HMBC spectrum of compound 1 (methanol- d_4).

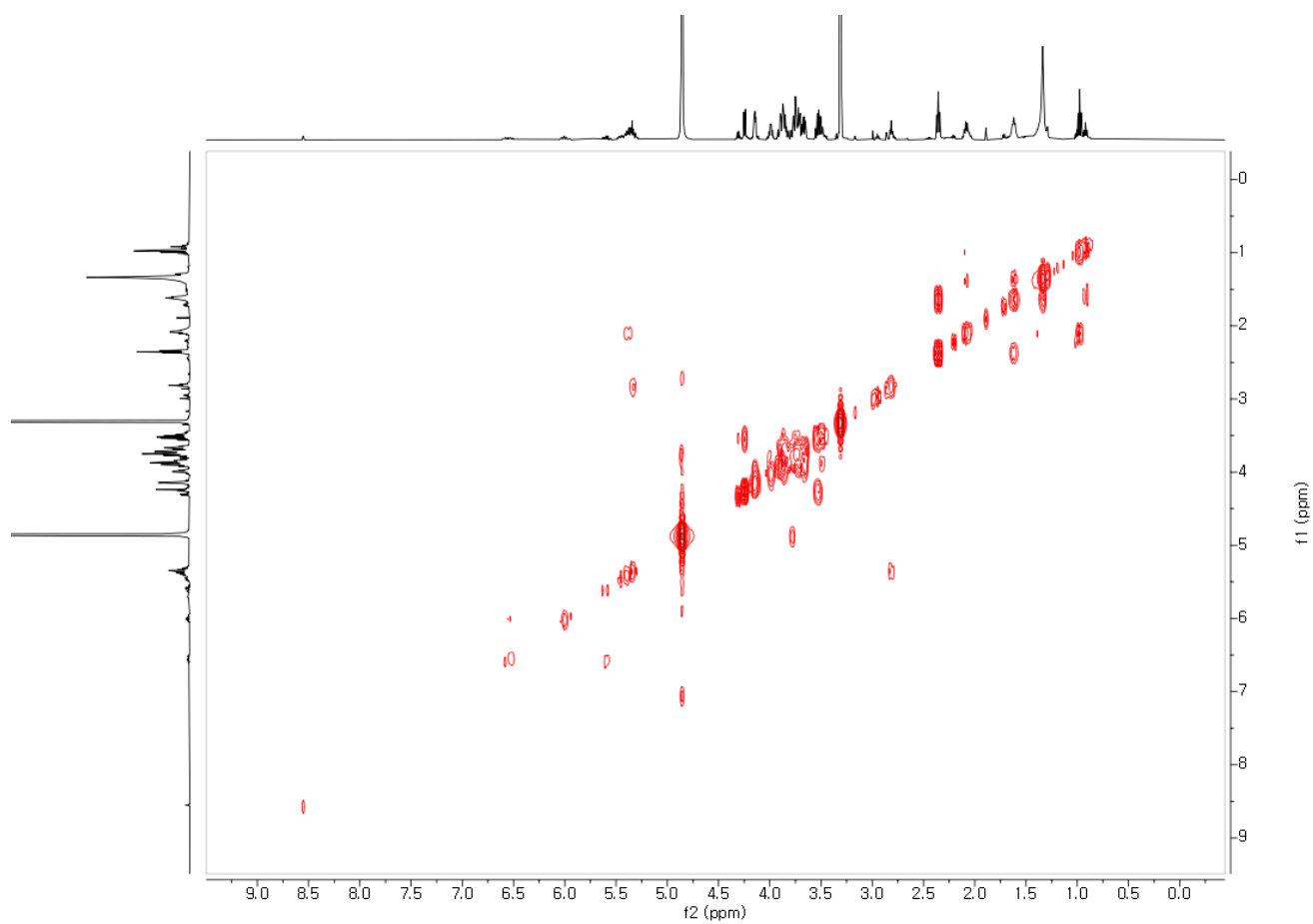


Figure S5. ^1H - ^1H COSY spectrum of compound 1 (methanol- d_4).

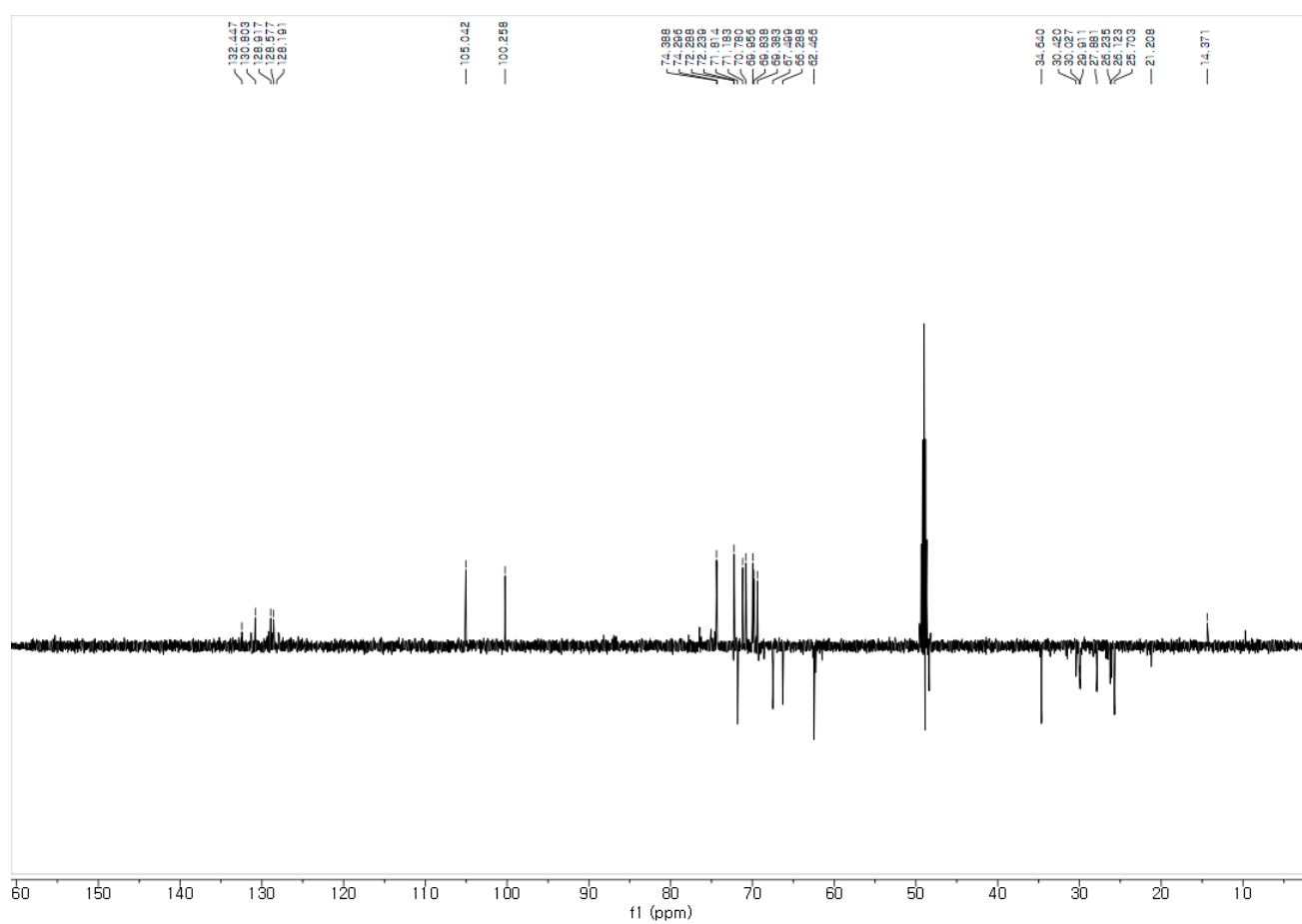


Figure S6. DEPT spectrum of compound **1** (methanol- d_4).

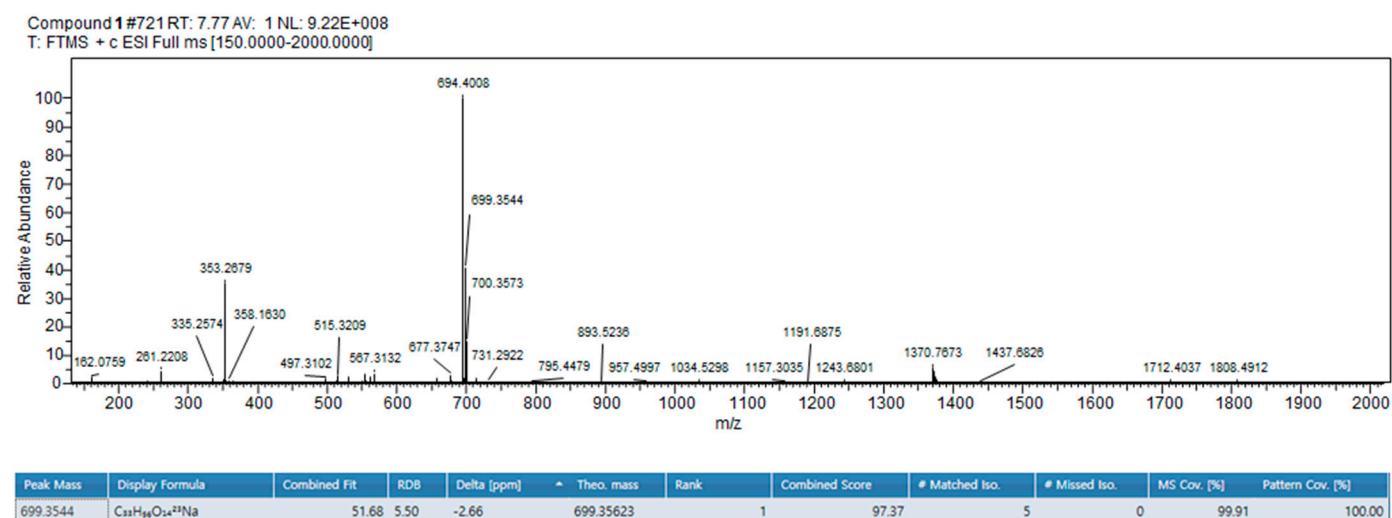


Figure S7. HRESIMS spectrum of compound 1.

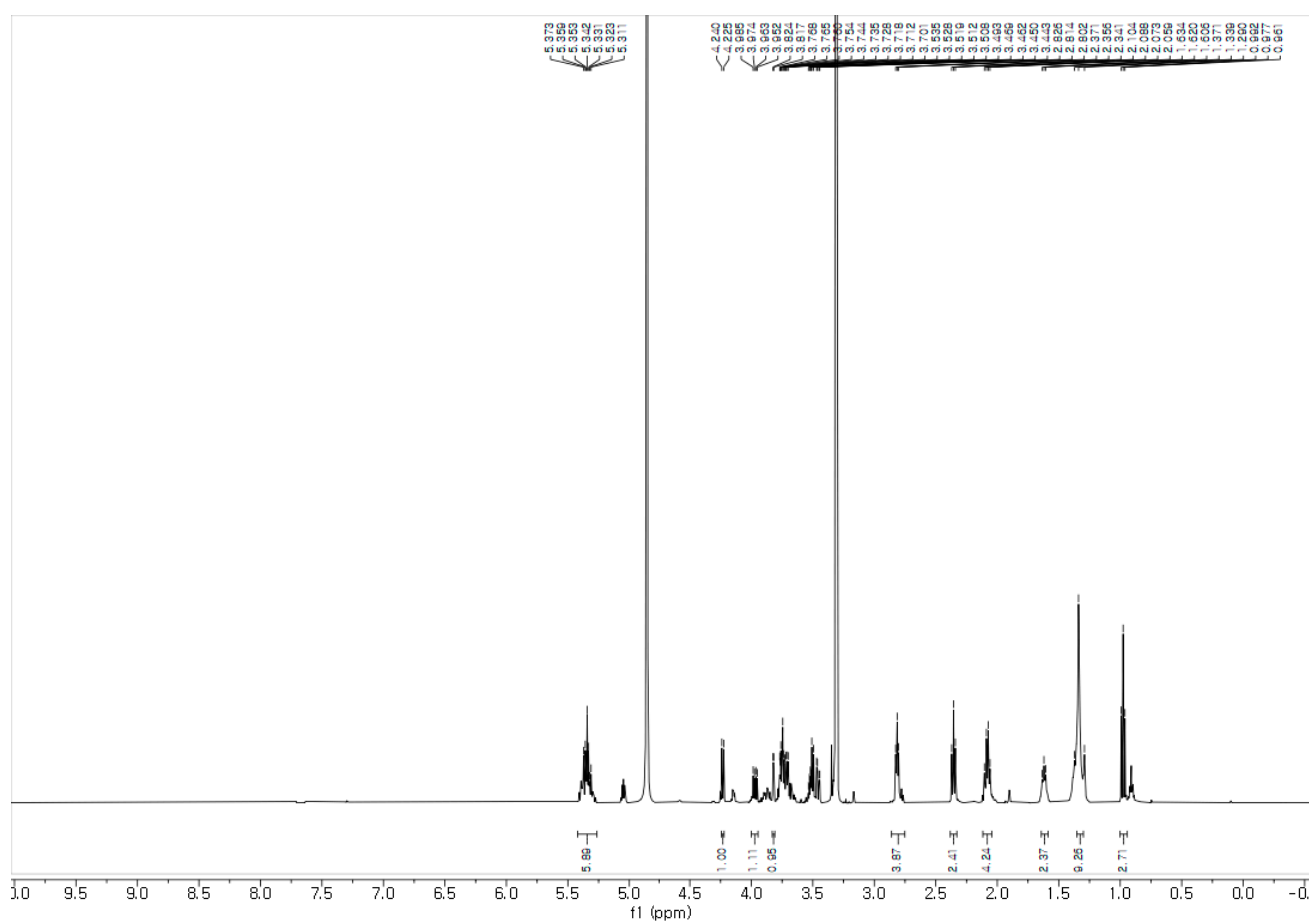


Figure S8. ^1H NMR spectrum of compound 2 (500 MHz, methanol- d_4).

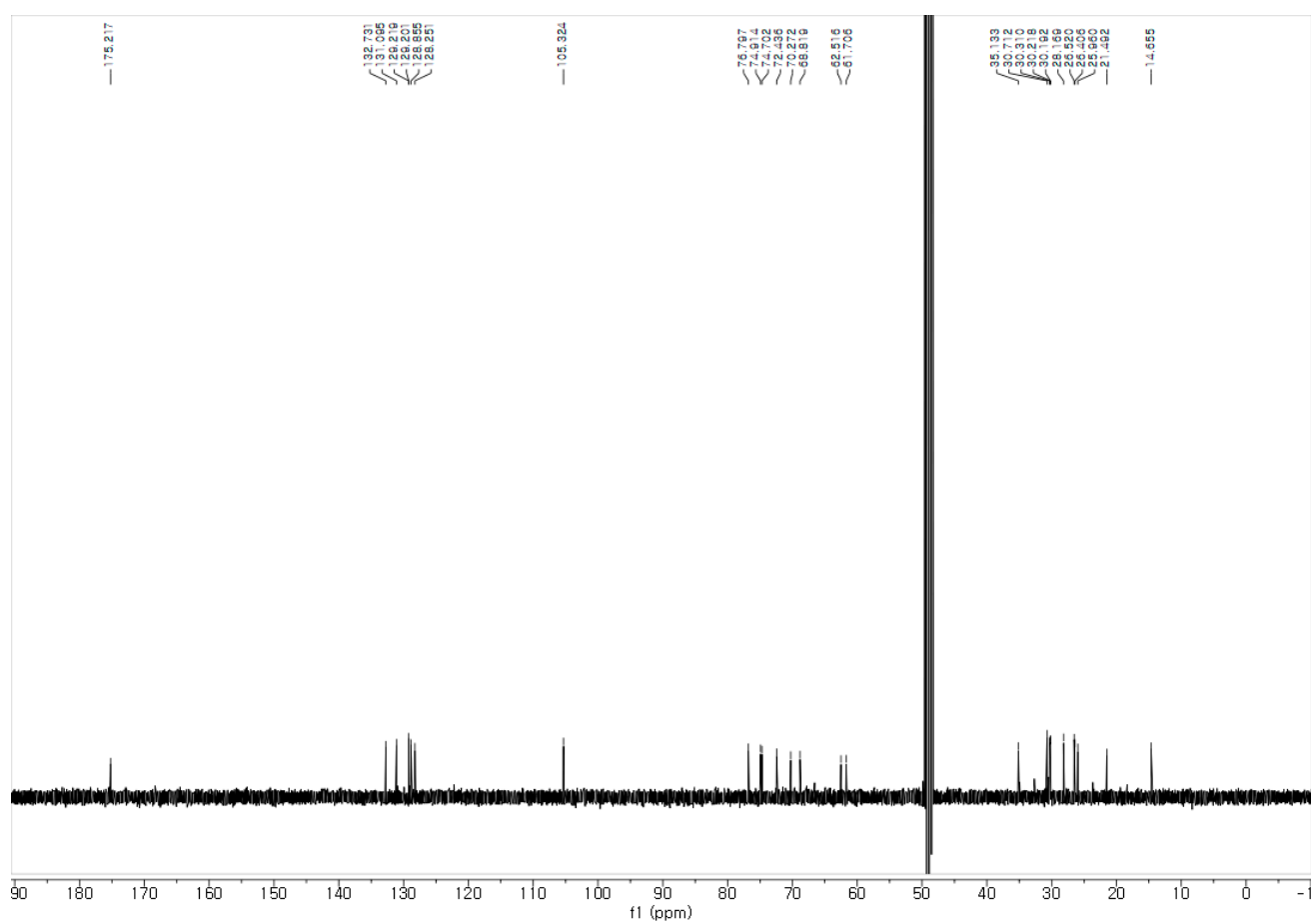


Figure S9. ¹³C NMR spectrum of compound 2 (125 MHz, methanol-*d*₄).

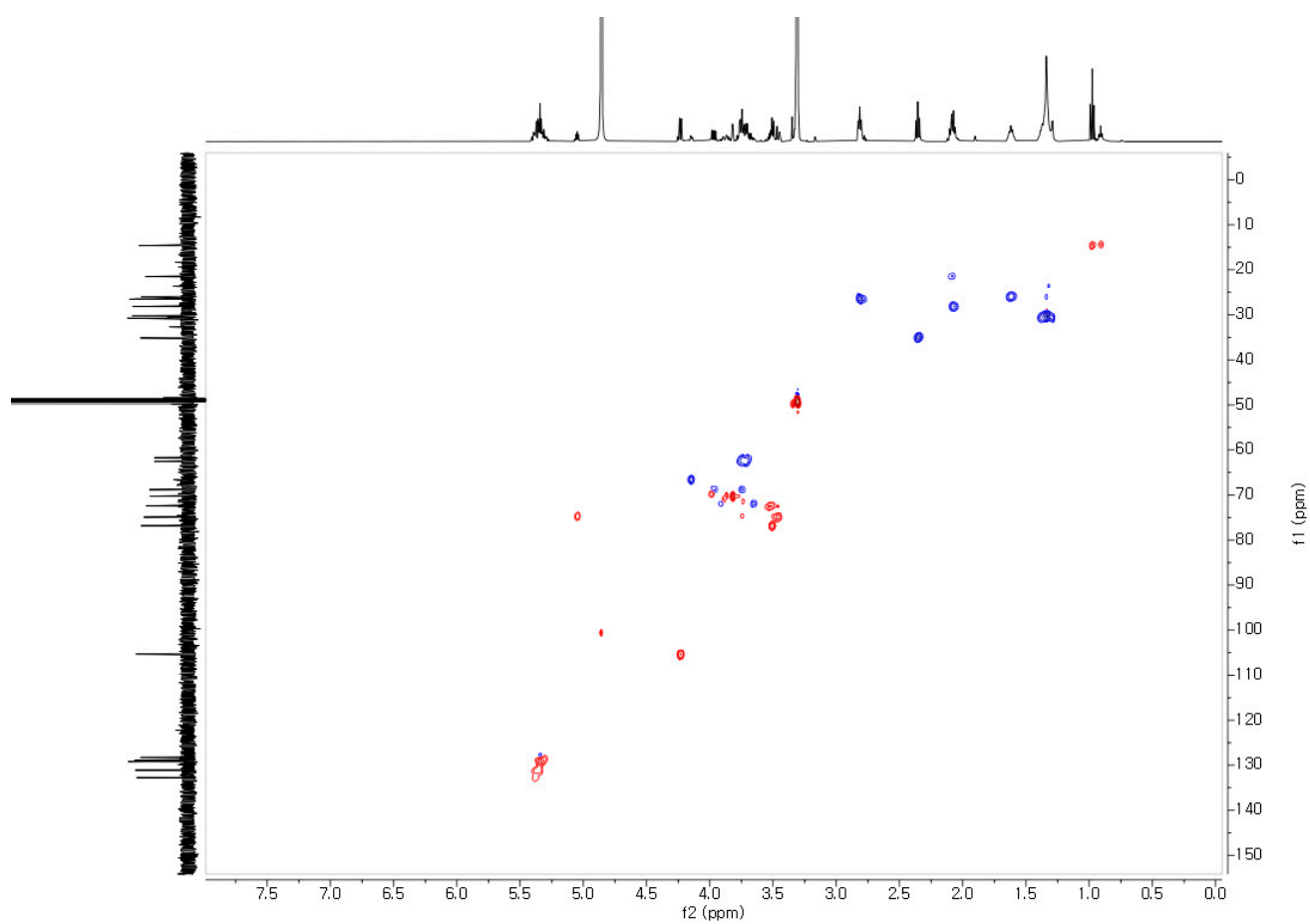


Figure S10. HSQC spectrum of compound 2 (methanol- d_4).

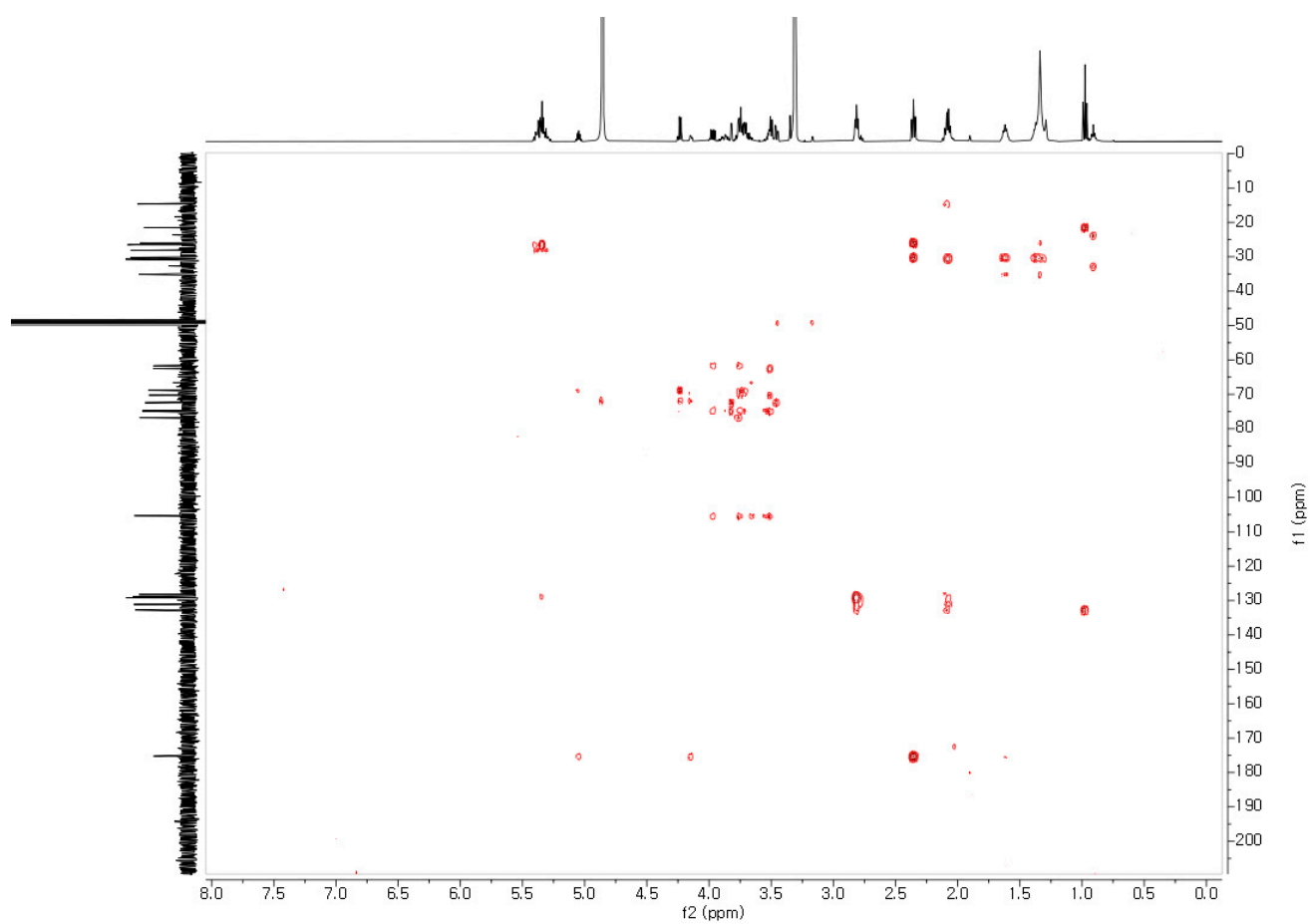


Figure S11. HMBC spectrum of compound 2 (methanol- d_4).

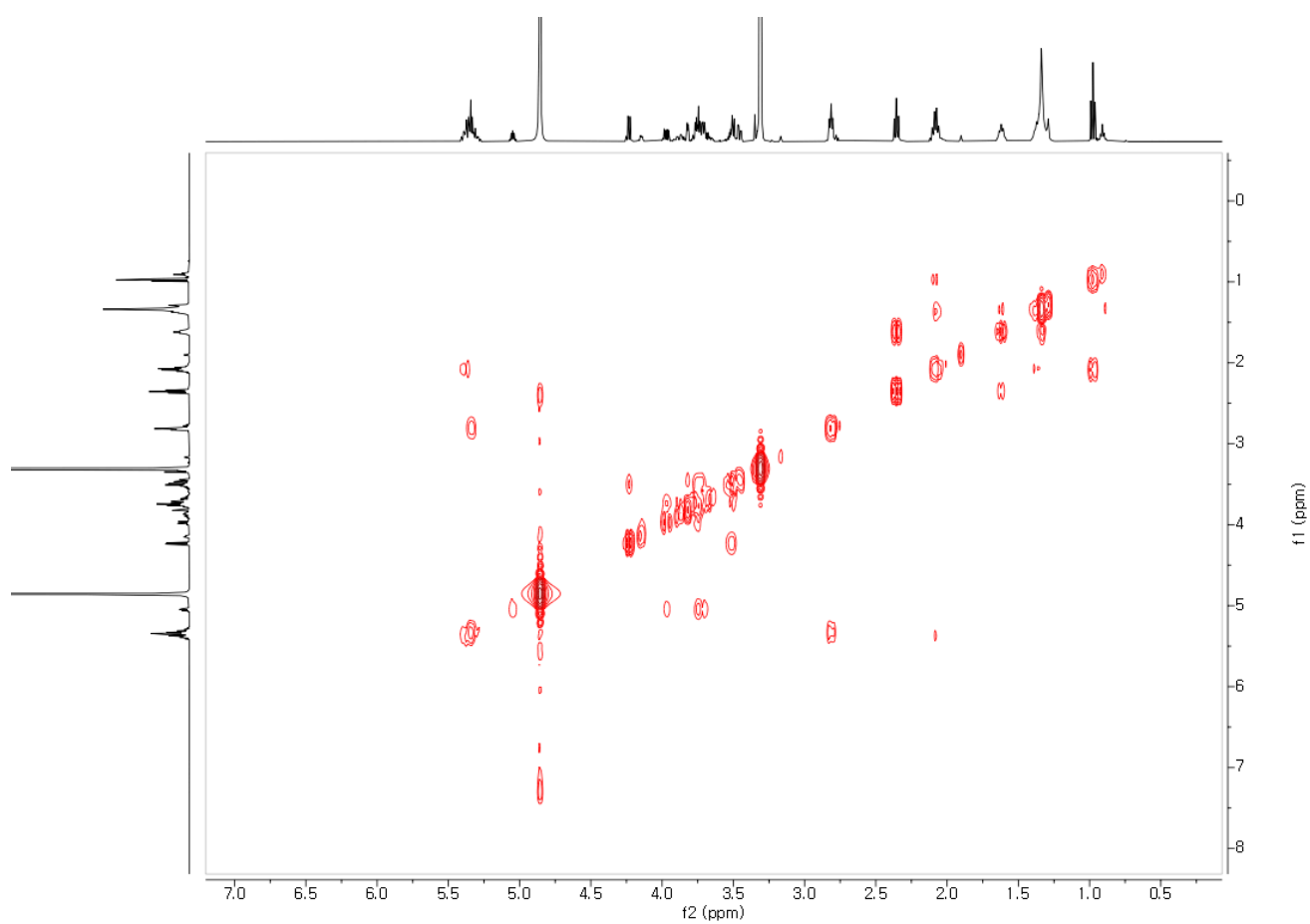


Figure S12. ^1H - ^1H COSY spectrum of compound 2 ($\text{methanol-}d_4$).

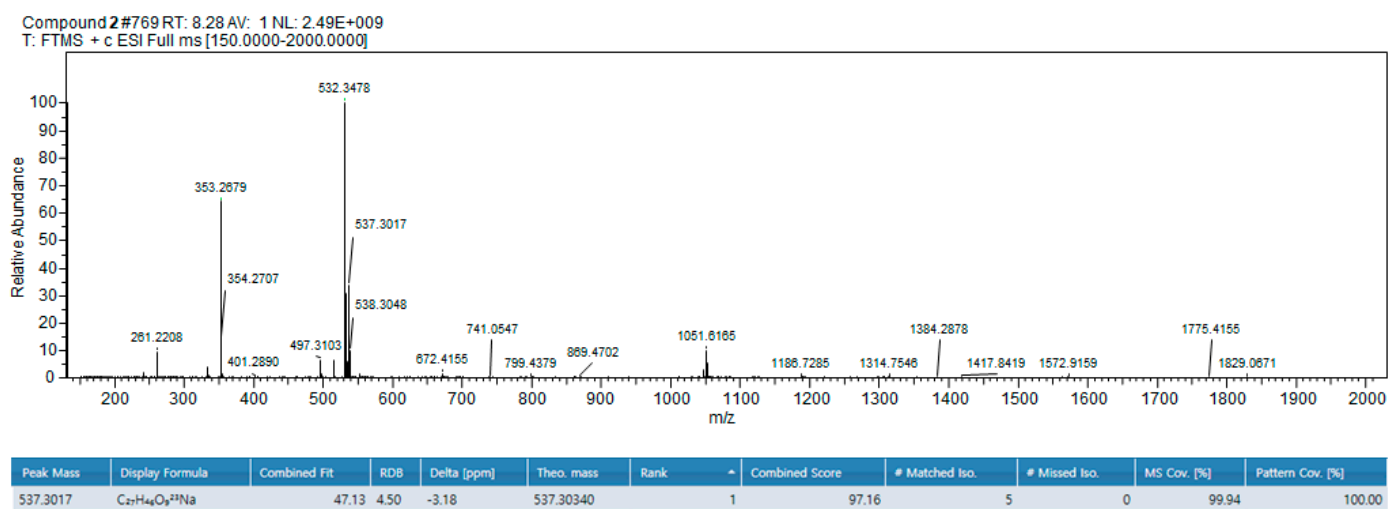


Figure S13. HRESIMS spectrum of compound 2.

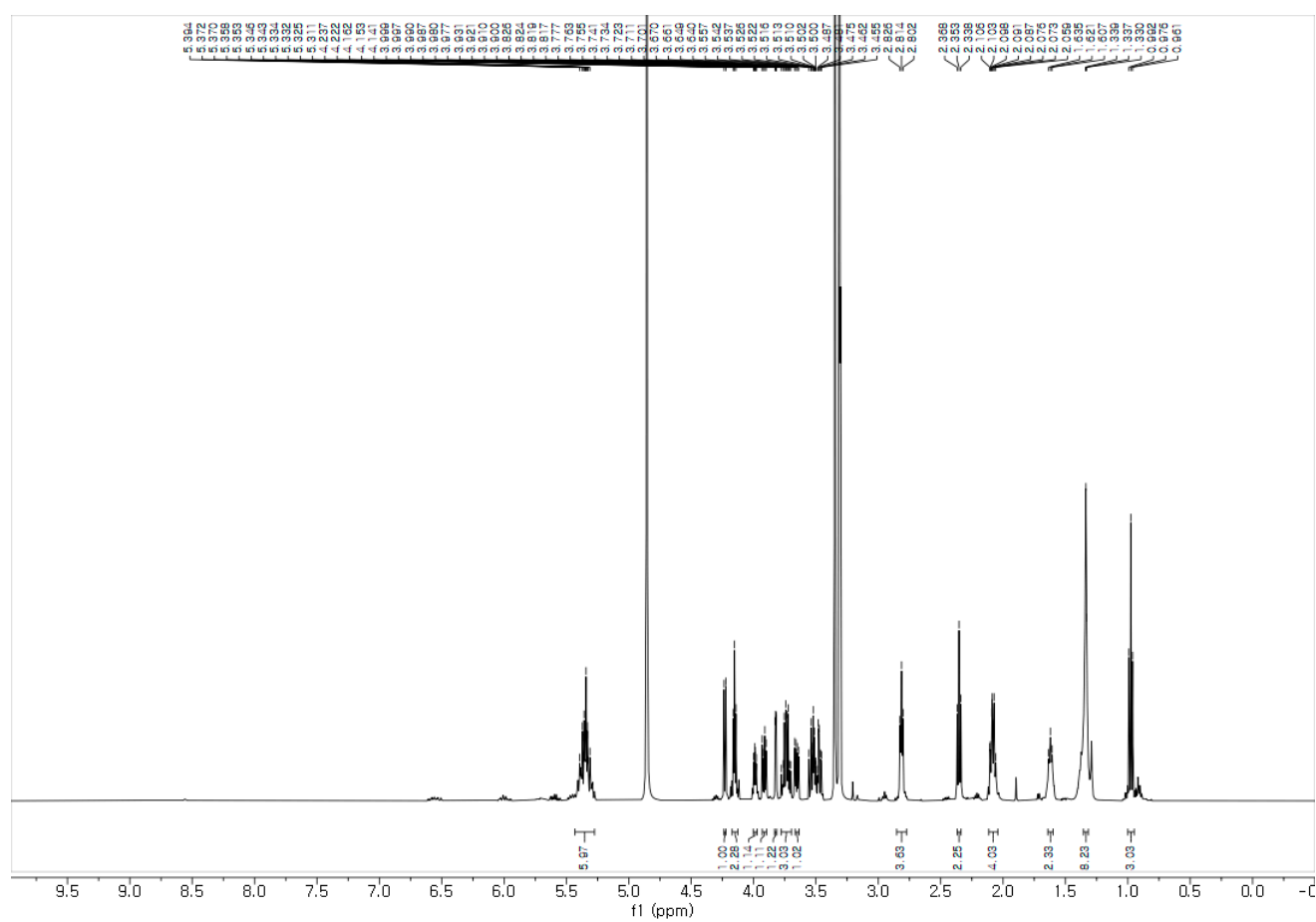


Figure S14. ^1H NMR spectrum of compound **2-1** (500 MHz, methanol- d_4).

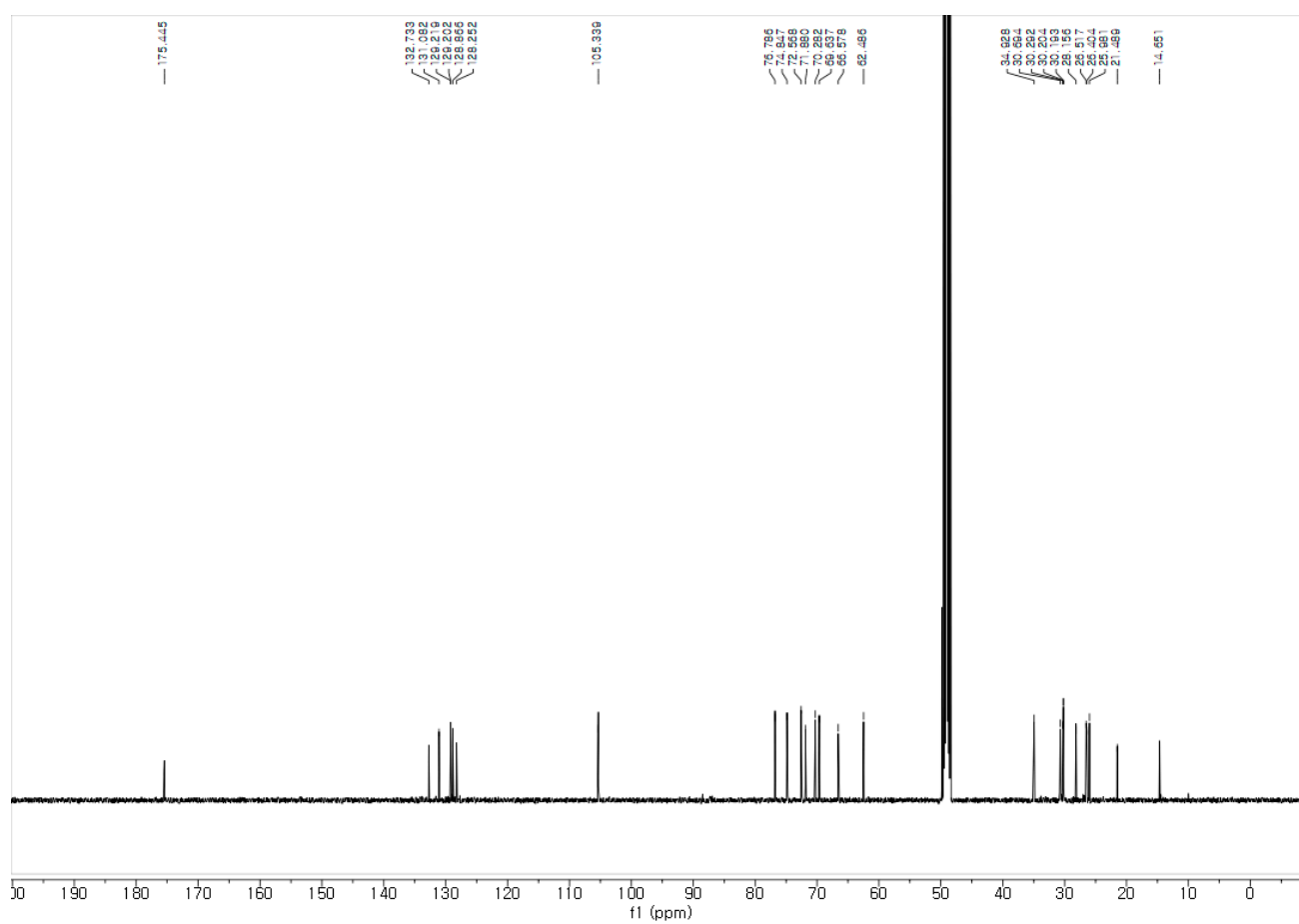


Figure S15. ^{13}C NMR spectrum of compound **2-1** (125 MHz, methanol- d_4).

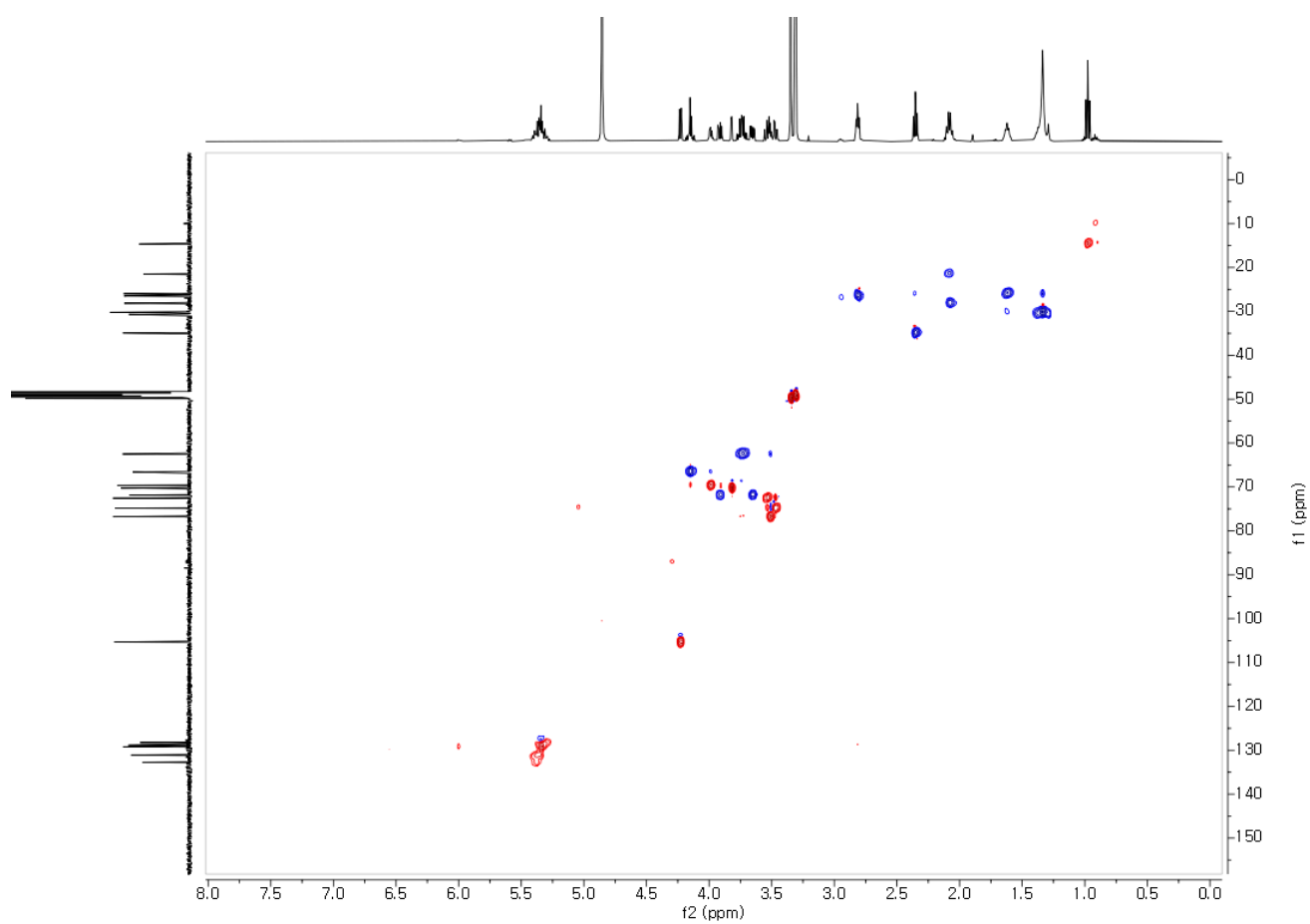


Figure S16. HSQC spectrum of compound 2-1 (methanol-*d*₄).

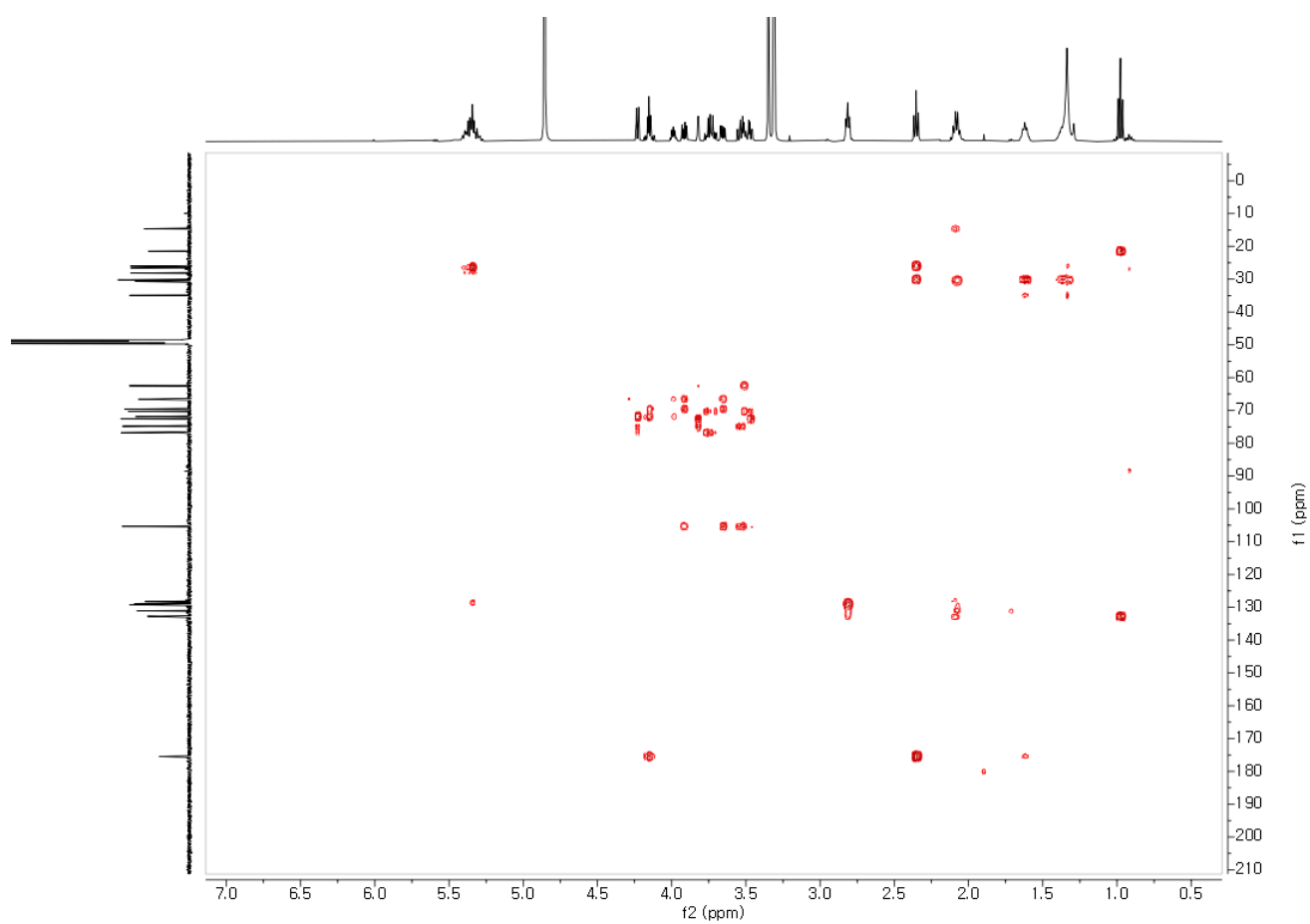


Figure S17. HMBC spectrum of compound 2-1 (methanol- d_4).

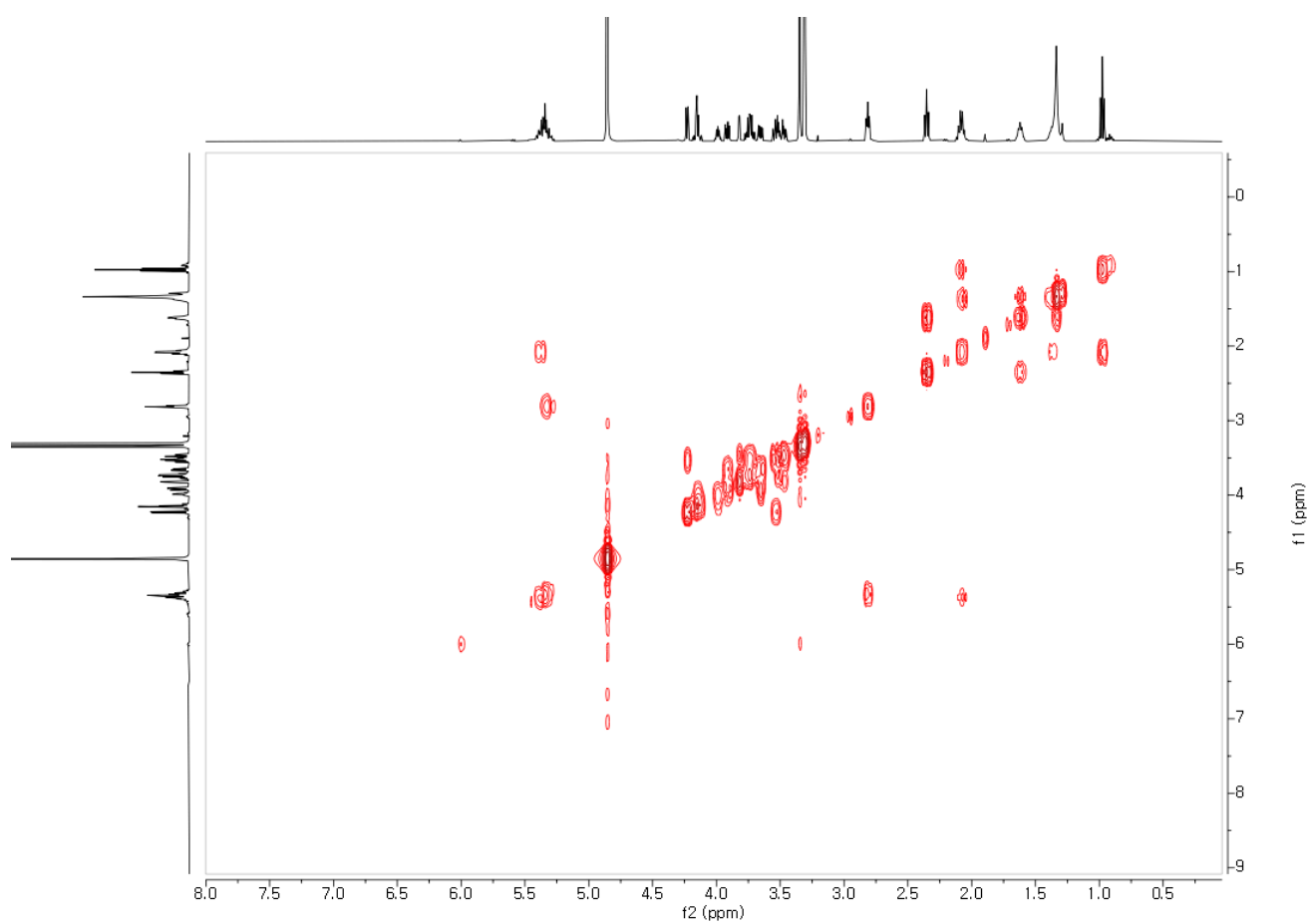


Figure S18. ^1H - ^1H COSY spectrum of compound 2-1 ($\text{methanol-}d_4$).

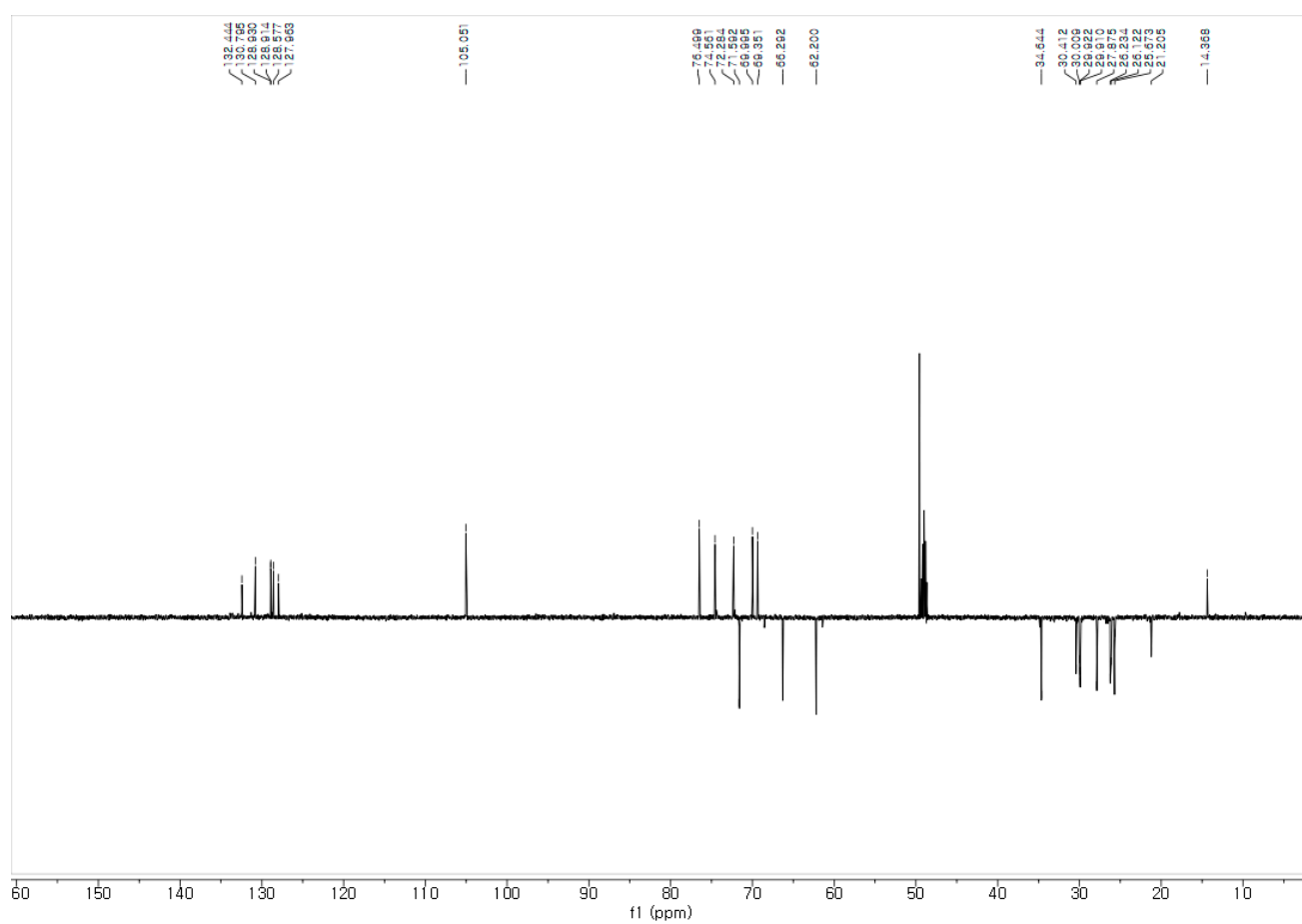


Figure S19. DEPT spectrum of compound 2-1 (methanol-*d*₄).

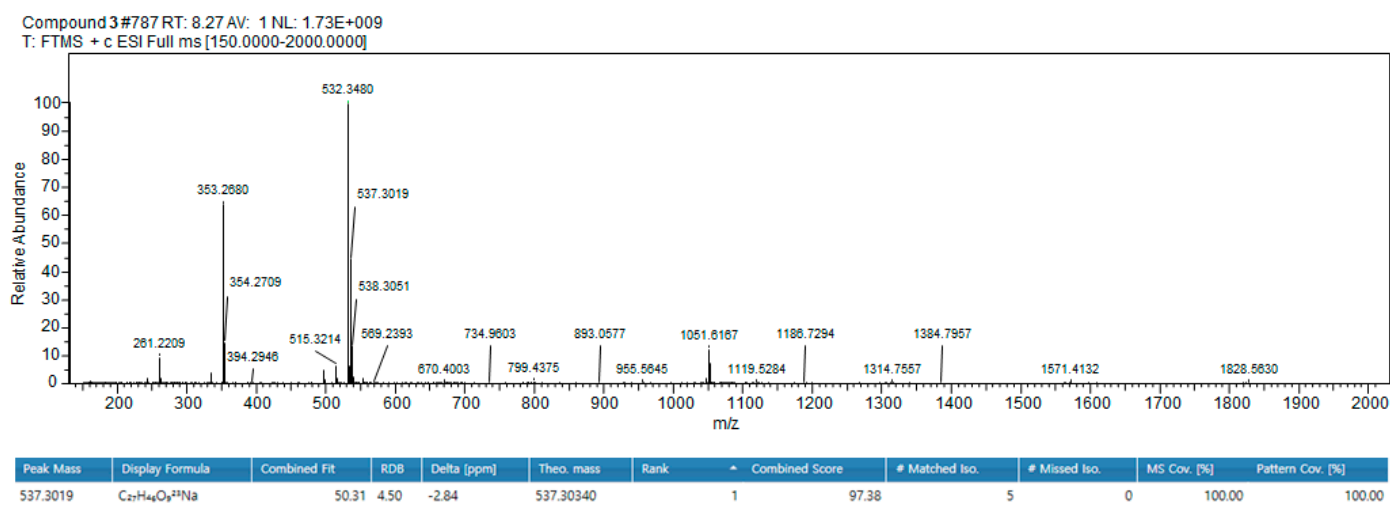


Figure S20. HRESIMS spectrum of compound 2-1.

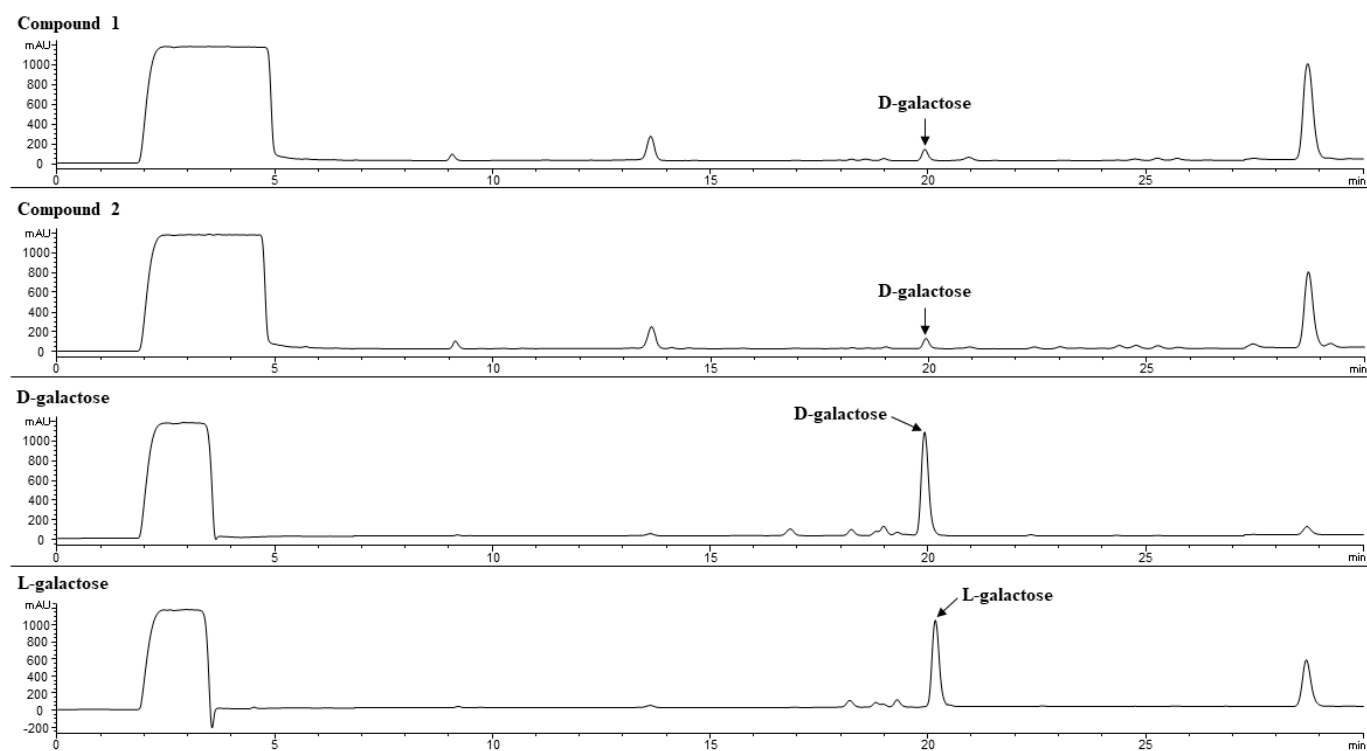


Figure S21. Sugar determination of compounds 1 and 2 by HPLC analysis.

MTT ASSAY

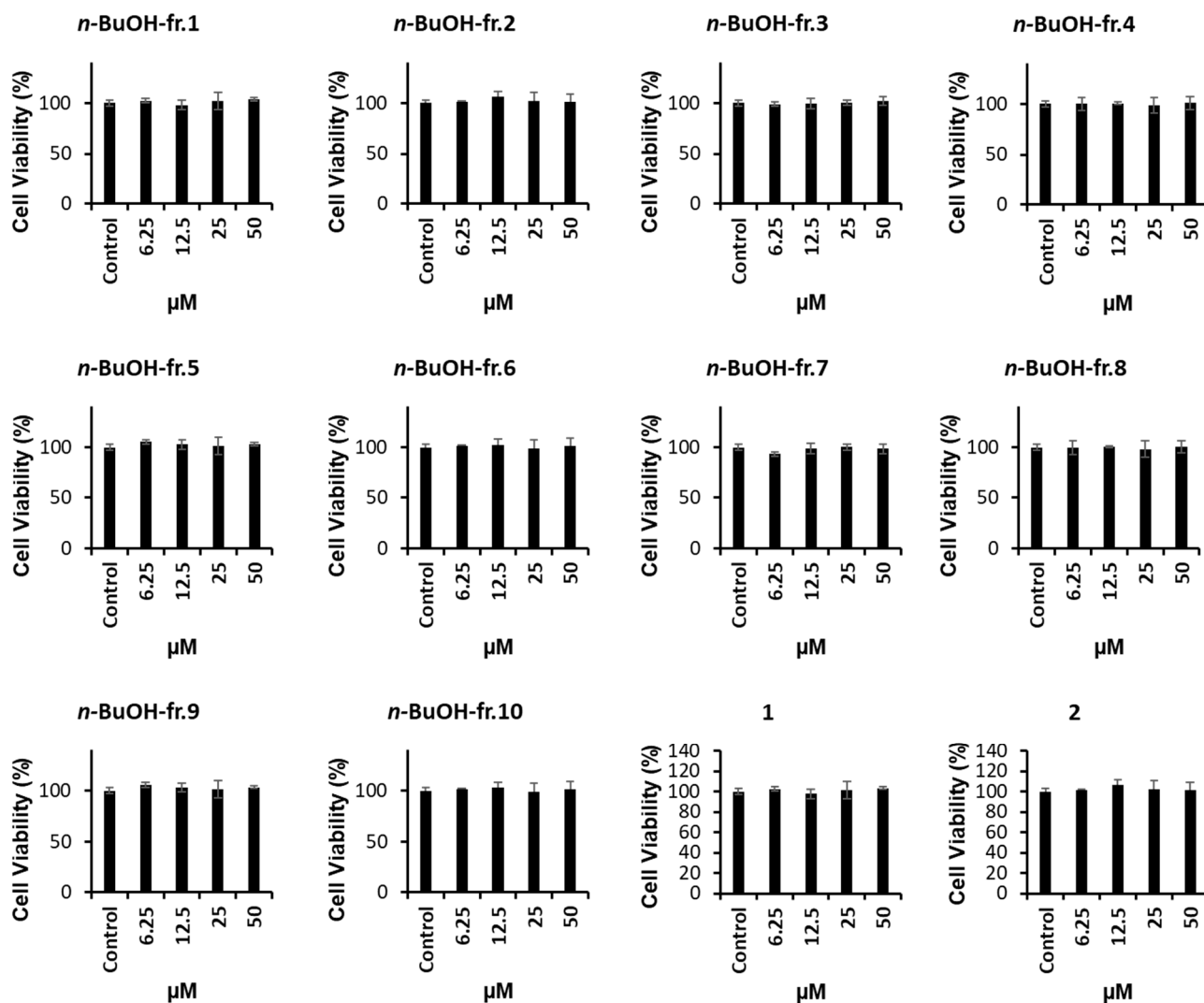


Figure S22. Cytotoxicity test of fractions and compounds