

## Article

# Early Meteorological Observations in Almada (Portugal) for the Period 1788–1813 by Medical Doctors

Nieves Bravo-Paredes <sup>1</sup>, María Cruz Gallego <sup>1</sup>, Ricardo M. Trigo <sup>2,3</sup>  and José Manuel Vaquero <sup>1,\*</sup> 

<sup>1</sup> Departamento de Física, Universidad de Extremadura, 06006 Badajoz, Spain; nieves@unex.es (N.B.-P.); maricruz@unex.es (M.C.G.)

<sup>2</sup> Instituto Dom Luiz (IDL), Faculdade de Ciências da Universidade de Lisboa, 1749-016 Lisbon, Portugal; rmtrigo@fc.ul.pt

<sup>3</sup> Departamento de Meteorologia, Universidade Federal do Rio de Janeiro, Rio de Janeiro 21941-919, Brazil

\* Correspondence: jvaquero@unex.es

**Abstract:** Early meteorological observations have been found for the period 1788–1813 in a collection of historical documents entitled “Medical and meteorological observation books” (*Livros de observações médicas e meteorológicas*) that is preserved nowadays in the Municipal Historical Archive of Almada. Almada is a Portuguese city located on the southern bank of the Tagus River, near the mouth of the river, in front of the capital city of Lisbon, which is located on the northern bank. In this work, more than 5000 meteorological readings for the period 1788–1813 have been recovered and analyzed. Daily values have been preserved for the period 1788–1789. However, only monthly values have stood the test of time for the period 1792–1813. The meteorological variables recovered are temperature, pressure, wind direction and the state of the sky. A quality control was carried out to find possible errors, either in the original data or in the digitization process. Unfortunately, there is no information in the metadata about the instruments or the observational methodology. Pressure and temperature data from modern and reanalysis datasets were used as references to study the agreement between these datasets and the Almada dataset. Daily pressure and temperature values from the Almada dataset were used to study, in particular, the meteorological conditions of the winter of 1788/1789 in Almada because this season was one of the coldest in the last 300 years in Central Europe. The complete dataset of early meteorological observations in Almada is freely available to the scientific community.

**Keywords:** meteorological; observations; Almada



**Citation:** Bravo-Paredes, N.; Gallego, M.C.; Trigo, R.M.; Vaquero, J.M. Early Meteorological Observations in Almada (Portugal) for the Period 1788–1813 by Medical Doctors. *Climate* **2023**, *11*, 193. <https://doi.org/10.3390/cli11090193>

Academic Editor: Nir Y. Krakauer

Received: 23 June 2023

Revised: 12 September 2023

Accepted: 14 September 2023

Published: 15 September 2023



**Copyright:** © 2023 by the authors. Licensee MDPI, Basel, Switzerland. This article is an open access article distributed under the terms and conditions of the Creative Commons Attribution (CC BY) license (<https://creativecommons.org/licenses/by/4.0/>).

## 1. Introduction

The first confirmed meteorological observations in Portugal were made by Diogo Nunes Ribeiro in Lisbon between 1 November 1724 and 11 January 1725. Despite the short time span of this series, it was used to analyze the unusual tropical storm of November 1724 that caused important damage on the island of Madeira and made landfall later in continental Portugal [1]. It should be noted that many initiatives have been carried out to recover early meteorological data in Portugal, as well as in the Portuguese colony of Rio de Janeiro in Brazil. For example, Alcoforado et al. [2] retrieved meteorological measurements from continental Portugal, Madeira Island and Rio de Janeiro (Brazil) for the period 1749–1802. Moreover, Farrona et al. [3] recovered daily meteorological observations in Rio de Janeiro for the period 1781–1788, and Vaquero et al. [4] retrieved more than 480,000 meteorological observations in Campo Maior for the period 1860–1939. Montero-Martín et al. [5] recovered the earliest series known of sunshine duration in Coimbra and cloud cover records for the period 1894–1950.

Additionally, meteorological observations from past centuries were also used to reconstruct the climate of Portugal: Alcoforado et al. [6] reconstructed the temperature and precipitation during the Maunder Minimum (AD 1675–1715), and Fragozo et al. [7] used

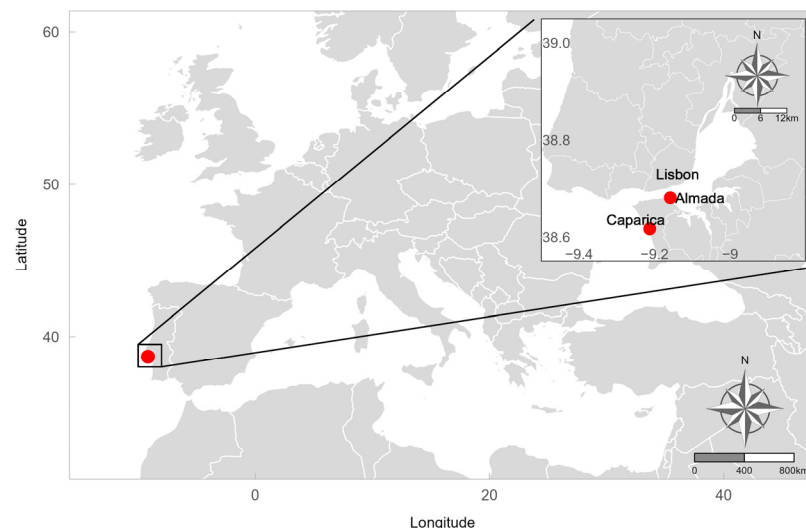
weather and climate information to reconstruct climate conditions in Portugal during the 18th century.

Furthermore, climate extremes have also been recovered in Portugal: Fragoso et al. [8] used different documentary sources to study droughts in Portugal in the 18th century, and Alcoforado et al. [9] used different documentary sources to analyze and extend the knowledge of the floods that occurred in the Douro River in Porto for the period 1727–1799.

It is interesting to note that in Spain, the other Iberian country, and in other parts of the world, the medical community was one of the pioneers in carrying out early meteorological observations, often in association with communities related to agriculture and the maritime sector (see, for example, the monograph by Anduaga Egaña [10]). Physicians were interested in the influence of weather and climate factors on human health, and some began very early to make their own weather observations [11]. Thus, it is not surprising that this set of early meteorological observations made in Almada were performed by medical doctors. The main aim of this work is to recover the early meteorological observations measured in Almada (Portugal) for the period 1788–1813. Moreover, quality control is carried out, and the data are analyzed and compared with modern and reanalyzed datasets. The structure of the paper is as follows: Section 2 describes the data and the instruments used; the method used for quality control is presented in Section 3; the main results of the analysis are presented in Section 4; and finally, the conclusions of this work are presented in Section 5.

## 2. Data

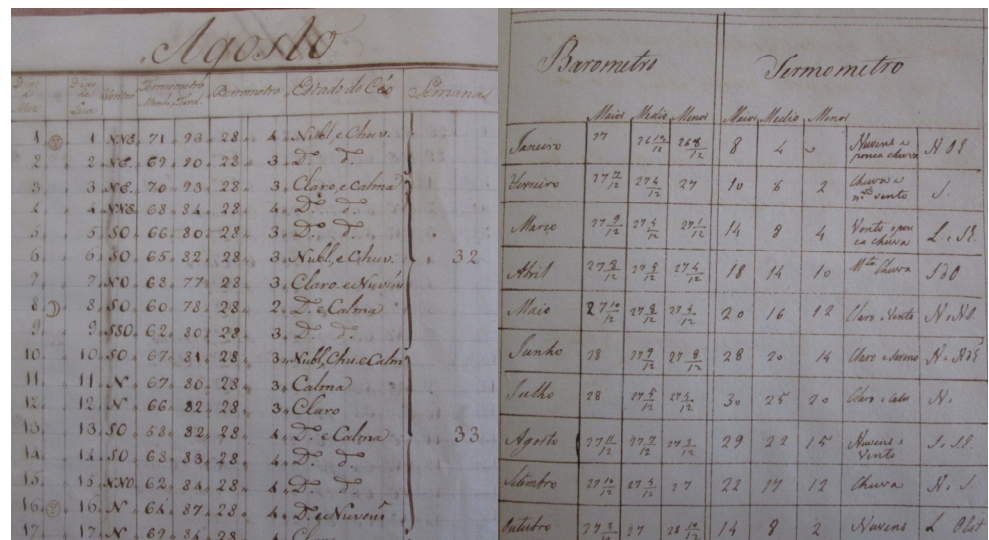
A set of documents entitled *Livros de observações médicas e meteorológicas* is preserved in the Arquivo Histórico Municipal de Almada for the period 1785–1813 with identification numbers from 3014 to 3029. Meteorological observations are found in these documents for the period 1788–1813. The observations were registered by the different doctors who practiced in Almada over the years. Almada is located south of Lisbon ( $38^{\circ}40'49''$  N,  $9^{\circ}9'30''$  W, approximately 58 m.a.s.l.) across the river Tagus. The red point in Figure 1 shows the location of Almada in the Iberian Peninsula (IP). Figure 1 (corner) shows the situation of the Almada in the Lisbon metropolitan area, close to the mouth of the Tagus River.



**Figure 1.** The red point in the principal panel shows the location of Almada in the IP. The inset corner panel shows the location of Almada and Caparica, close to the Lisbon metropolitan area and the mouth of the Tagus River.

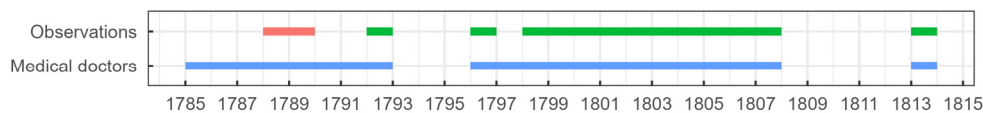
In total, 5883 meteorological observations from the Almada dataset were retrieved for the period 1788–1813. The dataset is composed of daily and monthly data. In particular, 4372 observations correspond to daily observations and were registered during the period

1788–1789. The meteorological variables registered during this period were temperature in the morning and afternoon, atmospheric pressure, wind direction, and the state of the sky. There are 1511 monthly values corresponding to the years 1792, 1796, 1813 and the period 1798–1807. The meteorological variables registered in monthly data were the absolute maximum, mean and absolute minimum temperature; the absolute maximum, mean and absolute minimum inches of pressure; wind direction and the state of the sky. There is no information in the metadata about the time of observation, the units or the instruments used. Figure 2 shows an example of the original records. The left panel shows the daily observations for August 1788. The right panel shows the monthly observations for the year 1807. As can be seen in both panels, the state of the sky is described in a few words (for example, “clear”, “calm”, “clouds”, etc.).



**Figure 2.** Original records for August 1788 (daily observations, left panel) and for the year 1807 (monthly observations, right panel).

It can be seen that there are different periods of observations; a possible explanation could be related to the three different doctors who worked in Almada during the full 1788–1813 period. Gaspar Lopes Henriques was the doctor during the period 1785–1792, José Joaquim Alvares was the doctor in the period 1796–1807 and José António Morão in 1813. Figure 3 shows a diagram of the observation periods of the meteorological variables (daily observations in pink and monthly observations in green) and the periods in which each doctor worked in Almada (blue).



**Figure 3.** Observation periods of the meteorological variables (daily observations in pink and monthly observations in green) and the periods in which each doctor worked in Almada (blue).

Other datasets are used to make comparisons with the historical data recovered. One dataset covers the period 1864–2018 for pressure observations and 1855–2018 for temperature observations for Lisbon (this dataset can be found at <https://www.ipma.pt/en/index.html>, accessed on 15 June 2023). Another dataset is a monthly global paleo-reanalysis (EKF400v2) generated over the 1600–2005 time period by Valler et al. [12]. Finally, wind direction data from the meteorological station located in Caparica (38°37'1.14" N; 9°12'46.32" W; approximately 7 km west of Almada) are used. The station recorded data every ten minutes during the period 2002–2017.

### 3. Method

The data were digitized by key entries from photographs taken from the documents preserved in the archive. The data could contain errors produced in the digitization process. Therefore, a basic quality control was performed to find possible errors or suspicious values in the digitized data. The quality control was carried out for daily pressure and temperature variables as follows:

1. Limit value: pressure lines cannot exceed the value of 12 (the graduation on the barometer scale is in inches: 1 inch = 12 lines). Therefore, if there are values that exceed this number, the values are checked against the original data and corrected.
2. Extreme values: the mean plus/minus three standard deviations are calculated in order to detect outlier values. Values that exceed these upper and lower thresholds are checked against the original data and corrected if they are errors.
3. Consecutive values: the difference of the values between consecutive days is calculated. This difference should not exceed a predefined threshold. The threshold is estimated by the mean plus/minus three standard deviations of the differences. Consecutive days with changes in values above this threshold could correspond to an error, a suspicious value, or an outlier. Values that exceed this threshold are checked against the original data and corrected if there is an error.

The long-term historical Lisbon dataset was used as a reference to compare the behavior of the annual climatological cycle from a modern station (despite the obvious differences in the period of both datasets) with the behavior of the monthly data from Almada. Thus, monthly averages of the pressure and temperature values of the Lisbon dataset have been computed for the periods 1864–2018 and 1855–2018, respectively. Additionally, the global paleo-reanalysis EKF400v2 dataset has been used as a reference to compare the available gridded monthly data with the recovered monthly data from Almada. Therefore, the monthly pressure and temperature data of the Almada and EKF400v2 datasets have been compared. The period selected for the Almada and EKF400v2 datasets is 1798–1808 since there are no gaps in the Almada dataset. Due to the different units used between the different datasets to be compared, the normalized values of the three datasets were calculated using the z-score equation:

$$z = \frac{x_i - \bar{x}}{\sigma}, \quad (1)$$

where  $x_i$  is the monthly value of pressure or temperature,  $\bar{x}$  is the monthly average of pressure or temperature values for the period 1798–1808 and  $\sigma$  is the monthly standard deviation of pressure or temperature for the period 1798–1808.

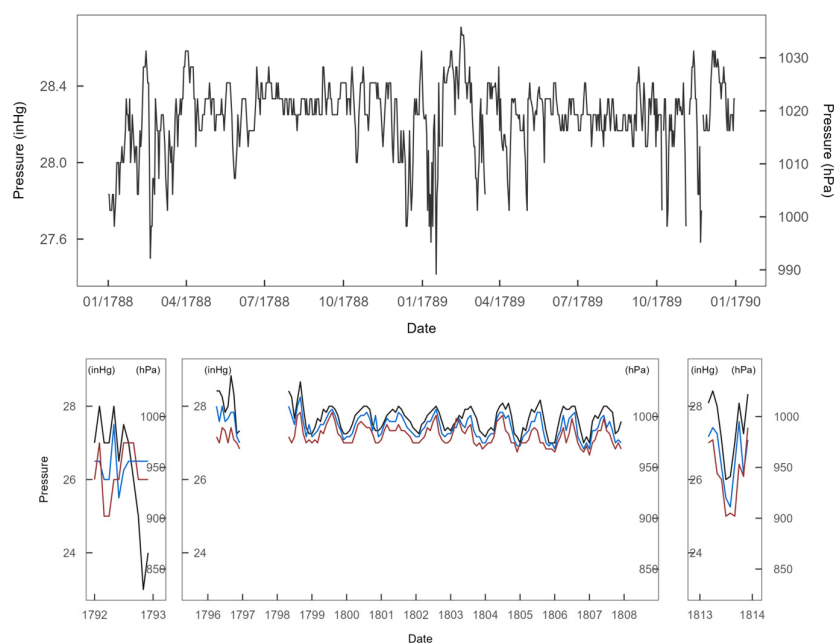
### 4. Results and Discussion

In total, 2911 daily values were analyzed by the quality control procedure. Only eight pressure values were corrected, representing 0.27% of the total data analyzed (0.18% of the total dataset). Three values were errors in the digitization process, and the remaining were original errors. The percentage of missing values for wind direction data is 3.83% for Caparica and 0.14% for Almada.

Daily pressure observations for the short period 1788–1789 can be observed in Figure 4 (top panel), while the corresponding monthly values available for the longer period (1792–1813) are shown in the lower panel. The red, blue and black lines in the lower panel correspond to the absolute minimum, mean and absolute maximum values, respectively. Unfortunately, there is no available information about the units used. However, looking at the scale, it has been assumed that the unit of pressure used was the French inch. Therefore, pressure values were converted to hectopascals (1 inch = 27.07 mm = 36.08 hPa). As can be seen in Figure 4 (in particular, in the lower panel), monthly pressure values are very low and should be considered “dubious” values. It was not possible to make corrections to the pressure data due to the lack of information. In particular, we do not know the installation altitude of this instrument. As can be seen in the monthly data (lower panel of Figure 4), the minimum values are higher than the mean and maximum values in



some cases. Therefore, it is possible that the minimum and maximum values are actually the highest and lowest values, respectively, for each month. Additionally, the last months of the year 1792 present much lower values than the remaining series. This could be an error by the observer.

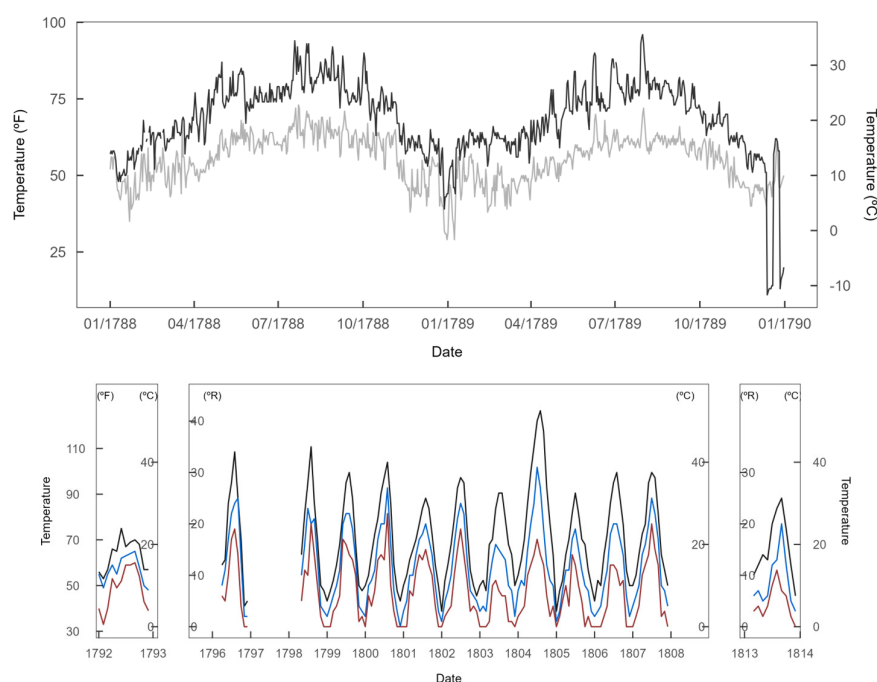


**Figure 4.** (Top Panel): daily pressure observations for the period 1788–1789. (Lower Panel): Monthly pressure observations for the period 1792–1813. The red, blue and black lines in the lower panel are the absolute minimum, mean and absolute maximum values, respectively.

Temperature data are shown in Figure 5: daily temperatures in the morning (light gray) and in the afternoon (dark gray) for the period 1788–1789 are shown in the upper panel; monthly observations of absolute minimum (red), mean (blue) and absolute maximum (black) temperatures for the period 1792–1813 are shown in the lower panel. As can be seen in Figure 5, the few last days of the year 1789 present considerably lower values. Similar to the very unusual pressure values observed at the end of 1792 (and mentioned above), this could be an error by the observer. Again, there is no information about the temperature units in the metadata. However, considering the range of daily temperature values and the monthly temperature values for the year 1792, it is likely that the temperature scale for these years is Fahrenheit degrees. For the period 1796–1813, it is more likely that the temperature scale is Reaumur. In any case, additional axes in the Centigrade scale were added to Figure 5. Similar to pressure observations, it is possible that the minimum and maximum values are actually the highest and lowest values, respectively, for each month. This could explain, in part, the very high values of maximum temperatures (lower panel of Figure 5). Additionally, it is possible that the thermometer was placed outdoors and exposed to the sun.

The winter of 1788/1789 was one of the coldest in the last 300 years in Central Europe [13,14]. Papert et al. [15] analyzed temperature and pressure data for the winter of 1788/1789 in Europe. Interestingly, the authors of this study used only three datasets from the IP in this study. The three datasets correspond to the cities of Cádiz, Madrid and Barcelona. Thus, the Almada dataset could extend knowledge about the winter of 1788/1789 in the western half of the IP. Not considering the possible outliers of late 1789, the minimum temperature values were registered in late 1788 and early 1789 (Figure 5, upper panel). The minimum temperature value in the morning is 29 degrees (units do not appear in the metadata as mentioned in Section 2) and was registered on 21 December 1788 and January 8th, 1789. The minimum temperature value in the afternoon was 39 degrees and

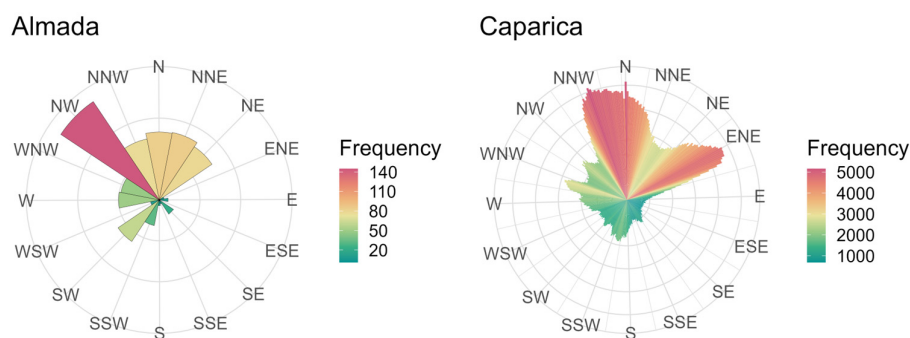
was registered on December 28th, 1788. Assuming that the temperature unit for the period 1788–1789 was Fahrenheit degrees, the minimum temperature values in the morning and in the afternoon in Celsius degrees are  $-1.67\text{ }^{\circ}\text{C}$  and  $3.89\text{ }^{\circ}\text{C}$ , respectively. The mean monthly temperature for January and December in Lisbon is  $11.5\text{ }^{\circ}\text{C}$  and  $12.3\text{ }^{\circ}\text{C}$ , respectively, for the period 1981–2010 (data can be downloaded at <https://www.ipma/en/index.html>, accessed on 15 June 2023). The mean minimum temperature for January and December in Lisbon for the same period is  $8.2\text{ }^{\circ}\text{C}$  and  $9.4\text{ }^{\circ}\text{C}$ , respectively. The temperature difference between days 22 and 23 of December 1788 is approximately  $7\text{ }^{\circ}\text{C}$ . Low-temperature values were recorded from 23 December 1788 to 9 January 1789. Pressure values of late 1788 and early 1789 registered more than 28 inches. The maximum value recorded during the period 23 December 1788–9 January 1789, was 28.58 inches of pressure (Figure 4, top panel). Considering again that the pressure unit for the period 1788–1789 was the French inch, the 28 and 28.58 inches of pressure in hectopascals are approximately 1010.24 hPa and 1031.17 hPa, respectively. There is no information about the height of the barometer, its position or other characteristics. Moreover, the state of the sky for most days of the period 23 December 1788–9 January 1789, was clear. Therefore, considering the range of temperature and pressure values observed for this period and the state of the sky, an anticyclone was likely the main cause of the low temperatures registered. Pappert et al. [15] show in their Figure 7 a persistent blocking in Europe for the period 21 December 1788–5 January 1789. Thus, the analysis of Almada data would be in agreement with this previous finding [15].



**Figure 5. (Top Panel):** daily temperature observations for the period 1788–1789. **(Lower Panel):** monthly temperature observations for the period 1792–1813. The light and dark gray lines in the top figure are the observations recorded in the morning and in the afternoon, respectively. The red, blue and black lines in the lower panel are the absolute minimum, mean and absolute maximum values, respectively.

The frequency of wind direction for daily data (period 1788–1789) is shown in Figure 6 (upper panel). However, it must be stressed that only one wind direction was registered for daily data, while monthly data present numerous wind directions. Thus, only daily data is represented. As can be seen in Figure 6, the prevailing wind direction was NW for the period 1788–1789. Additionally, the predominant wind directions are NNW, N, NNE and NE. SW, W and WNW wind directions are also important, but to a lesser extent. For

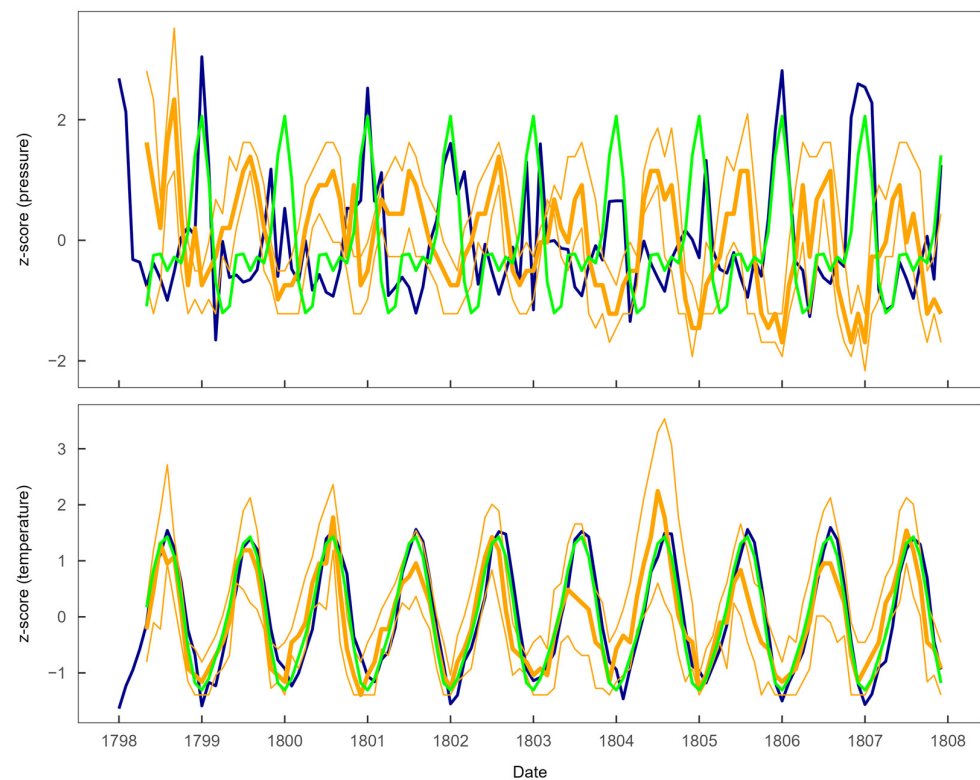
the coldest episode of Almada (the winter of 1788/1789), there was a greater frequency of North/East winds.



**Figure 6.** Frequency of daily wind direction data for the period 1788–1789 at Almada (**Left Panel**) and frequency of 10-min wind direction data at the modern station of Caparica for 2002–2017, respectively (**Right Panel**).

A comparison between historical and modern wind direction data can be made, despite the obvious differences in instrumentation and location. The frequency of the subdaily wind direction data from a meteorological station located near Almada (Caparica) has been plotted. Figure 6 shows the frequency of wind direction data for Almada (left panel) and Caparica (right panel). Qualitatively, the distribution of the wind directions in the historical and modern datasets is similar. The prevailing wind direction is NW for Almada and NNW for Caparica. Several reasons, such as local effects in the position of the instruments or the difference in recording times, could be the basis of the difference in the frequency of the wind direction datasets.

Figure 7 shows the monthly observations of z-score pressure (upper panel) and temperature (lower panel) for the period 1798–1808. The orange lines in both plots represent the minimum (thin line), mean (thick line) and maximum (thin line) values of the Almada dataset, respectively. The blue and green lines are the data for EKF400v2 and the climatological modern values for Lisbon, respectively. The series of EKF400v2 corresponds to the closest grid point to Lisbon. The behavior of the Almada series of mean values (thick orange line in Figure 7) will be compared with the EKF400v2 and Lisbon series. The temporal evolution of EKF400v2 and the Lisbon series is (as expected) very similar and juxtaposed to a large extent in both panels. However, the behavior of the historical data for Almada shows significant differences with both the EKF400v2 and the modern Lisbon series. In general, we can point out important inconsistencies in the monthly data for Almada. As can be seen in Figure 7 (upper panel), when the values related to the pressure of the Almada dataset are positive (negative), the values of the Lisbon and EKF400v2 datasets are negative (positive), implying that the annual cycle for Almada is inverted for this meteorological variable. Therefore, it is possible that the pressure observations in the Almada dataset were not well measured, although the lack of metadata does not allow us to accurately assess the problem. Regarding temperature monthly values (Figure 7, lower panel), we once again found problems in the Almada data when compared with the other series. In this case, the annual cycle is not reversed, but the amplitude of the temperature oscillations is highly variable and does not seem to reproduce natural variability. In particular, while the first part of the Almada temperature series appears to match relatively well the observed historical EKF400v2 dataset and the climatological modern values for Lisbon, after 1803 it reveals a much less robust match with EKF400v2, particularly for the years 1803 and 1804. Therefore, pressure and temperature observations from the Almada dataset must be used with caution.



**Figure 7.** Monthly observations of z-score pressure (**Upper Panel**) and temperature (**Lower Panel**) for the period 1798–1808. The orange lines in both panels are the minimum (lower thin line), mean (thick line) and maximum (upper thin line) values of the Almada dataset, respectively. The blue and green lines are the data for EKF400v2 and climatological values for Lisbon, respectively.

## 5. Conclusions

In total, 5883 meteorological observations from the Almada dataset were retrieved for the period 1788–1813. The dataset is composed of both daily and monthly data. A subset of 4372 observations corresponds to daily observations and was registered during the subperiod 1788–1789. The meteorological variables registered during this shorter period were temperature in the morning and afternoon, inches of pressure, wind direction and the state of the sky. The 1511 monthly values correspond to the years 1792, 1796, 1813 and the period 1798–1807.

Meteorological observations were found in a set of documents entitled *Livros de observações médicas e meteorológicas* preserved in the Arquivo Histórico Municipal de Almada for the period 1785–1813. In total, 5883 meteorological observations were retrieved for the period 1788–1813. Daily values were registered for the period 1788–1789 and monthly values for the period 1792–1813. The dataset is composed of different meteorological variables: temperature, pressure, wind direction and the state of the sky. A small number of values were detected as errors in the quality control. The percentage corresponds to 0.27% of the total data analyzed and 0.18% of the total dataset.

Regarding the reliability of the recovered meteorological series, we have found many problems in the monthly series of both variables. In particular, the annual cycle of atmospheric pressure appears to be inverted and the amplitudes of the annual cycle of temperature are very unequal, although the problems with this variable appear to be less dramatic than those mentioned for atmospheric pressure. The lack of metadata prevents us from advancing in the correction of these problems. Therefore, we recommend extreme caution if monthly data is used in any study. Fortunately, the daily series does not show these problems.



Finally, taking into account that the winter of 1788/1789 was one of the coldest in the last 300 years in Central Europe, the daily data from Almada provided a better knowledge of the meteorological conditions of the winter of 1788/1789 in southwest Europe.

**Author Contributions:** N.B.-P. did the data analysis and wrote the first draft of the manuscript. R.M.T. and J.M.V. located the original data and initiated the collaboration. R.M.T., J.M.V. and M.C.G. wrote and revised the manuscript. All authors have read and agreed to the published version of the manuscript.

**Funding:** This research was supported by the Economy and Infrastructure Counselling of the Junta of Extremadura through project IB20080. The research of N. Bravo-Paredes has been supported by the predoctoral fellowship PRE2018-084897 from the Agencia Estatal de Investigación (Ministerio de Ciencia, Innovación y Universidades) of the Spanish Government.

**Data Availability Statement:** The dataset recovered is publicly available at the Zenodo open data repository at <https://doi.org/10.5281/zenodo.8069288> (accessed on 15 June 2023).

**Acknowledgments:** The help and support provided by Otilia Rosado and all the staff of the Municipal Historical Archive of Almada (Arquivo Histórico Municipal de Almada) is greatly appreciated.

**Conflicts of Interest:** The authors declare no conflict of interest.

## References

- Domínguez-Castro, F.; Trigo, R.M.; Vaquero, J.M. The first meteorological measurements in the Iberian Peninsula: Evaluating the storm of November 1724. *Clim. Chang.* **2013**, *118*, 443–455. [[CrossRef](#)]
- Alcoforado, M.J.; Vaquero, J.M.; Trigo, R.M.; Taborda, J.P. Early Portuguese meteorological measurements (18th century). *Clim. Past* **2012**, *8*, 353–371. [[CrossRef](#)]
- Farrona, A.M.M.; Trigo, R.M.; Gallego, M.C.; Vaquero, J.M. The meteorological observations of Bento Sanches Dorta, Rio de Janeiro, Brazil: 1781–1788. *Clim. Chang.* **2012**, *115*, 579–595. [[CrossRef](#)]
- Vaquero, J.M.; Bravo-Paredes, N.; Obregón, M.A.; Carrasco, V.M.S.; Valente, M.A.; Trigo, R.M.; Domínguez-Castro, F.; Montero-Martín, J.; Vaquero-Martínez, J.; Antón, M.; et al. Recovery of early meteorological records from Extremadura region (SW Iberia): The ‘CliPastExtrem’ (v1.0) database. *Geosci. Data J.* **2021**, *9*, 207–220. [[CrossRef](#)]
- Montero-Martín, J.; Antón, M.; Vaquero, J.M.; Neto, J.; Sanchez-Lorenzo, A. Early sunshine duration and cloud cover records in Coimbra (Portugal) for the period 1891–1950. *Int. J. Climatol.* **2021**, *41*, 4977–4986. [[CrossRef](#)]
- Alcoforado, M.J.; Nunes, M.d.F.; Garcia, J.C.; Taborda, J.P. Temperature and precipitation reconstruction in southern Portugal during the late Maunder Minimum (AD 1675–1715). *Holocene* **2000**, *10*, 333–340. [[CrossRef](#)]
- Fragoso, M.; Marques, D.; Santos, J.A.; Alcoforado, M.J.; Amorim, I.; Garcia, J.C.; Silva, L.; Nunes, M.F. Climatic extremes in Portugal in the 1780s based on documentary and instrumental records. *Clim. Res.* **2015**, *66*, 141–159. [[CrossRef](#)]
- Fragoso, M.; Carraça, M.G.; Alcoforado, M.J. Droughts in Portugal in the 18th century: A study based on newly found documentary data. *Int. J. Climatol.* **2018**, *38*, 5522–5541. [[CrossRef](#)]
- Alcoforado, M.J.; Silva, L.P.; Amorim, I.; Fragoso, M.; Garcia, J.C. Historical floods of the Douro River in Porto, Portugal (1727–1799). *Clim. Chang.* **2021**, *165*, 1–20. [[CrossRef](#)]
- Anduaga Egaña, A. *Meteorología, Ideología y Sociedad en la España Contemporánea*; Consejo Superior de Investigaciones Científicas: Madrid, Spain, 2012; ISBN 978-84-00-09421-8.
- Pliemon, T.; Foelsche, U.; Rohr, C.; Pfister, C. Subdaily meteorological measurements of temperature, direction of the movement of the clouds, and cloud cover in the Late Maunder Minimum by Louis Morin in Paris. *Clim. Past* **2022**, *18*, 1685–1707. [[CrossRef](#)]
- Valler, V.; Franke, J.; Brugnara, Y.; Brönnimann, S. An updated global atmospheric paleo-reanalysis covering the last 400 years. *Geosci. Data J.* **2021**, *9*, 89–107. [[CrossRef](#)] [[PubMed](#)]
- Brázdil, R.; Valášek, H.; Macková, J. Climate in the Czech lands during the 1780s in light of the daily weather records of parson Karel Bernard Hein of Hodonice (southwestern Moravia): Comparison of documentary and instrumental data. *Clim. Chang.* **2003**, *60*, 297–327. [[CrossRef](#)]
- Gisler, O. Das Wetter zu Ende des 18. Jahrhunderts. *Geogr. Helv.* **1985**, *40*, 205–222. [[CrossRef](#)]
- Pappert, D.; Barriendos, M.; Brugnara, Y.; Imfeld, N.; Jourdain, S.; Przybylak, R.; Rohr, C.; Brönnimann, S. Statistical reconstruction of daily temperature and sea-level pressure in Europe for the severe winter 1788/9. *Clim. Past Discuss.* **2022**, *18*, 2545–2565. [[CrossRef](#)]

**Disclaimer/Publisher’s Note:** The statements, opinions and data contained in all publications are solely those of the individual author(s) and contributor(s) and not of MDPI and/or the editor(s). MDPI and/or the editor(s) disclaim responsibility for any injury to people or property resulting from any ideas, methods, instructions or products referred to in the content.