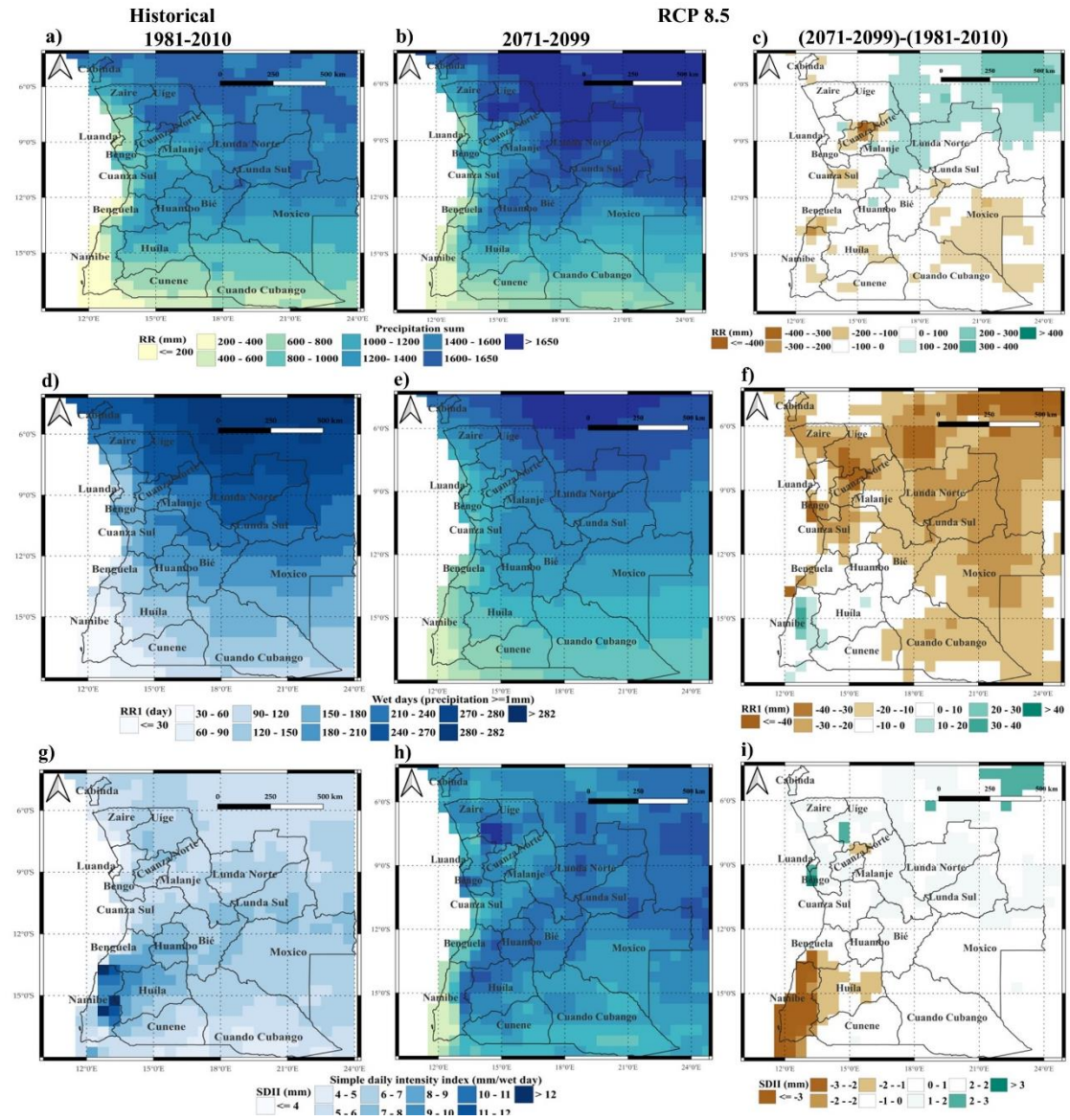
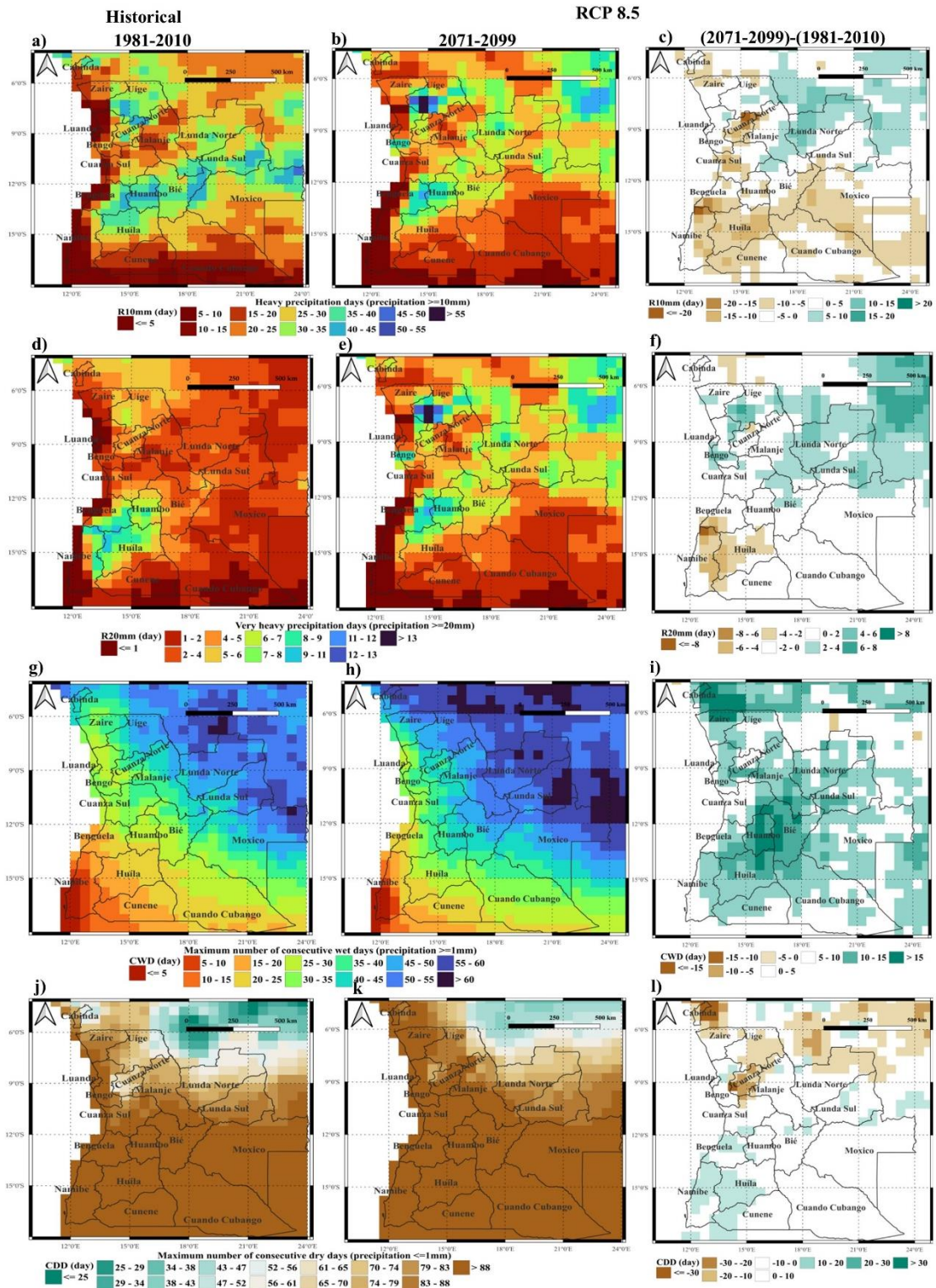


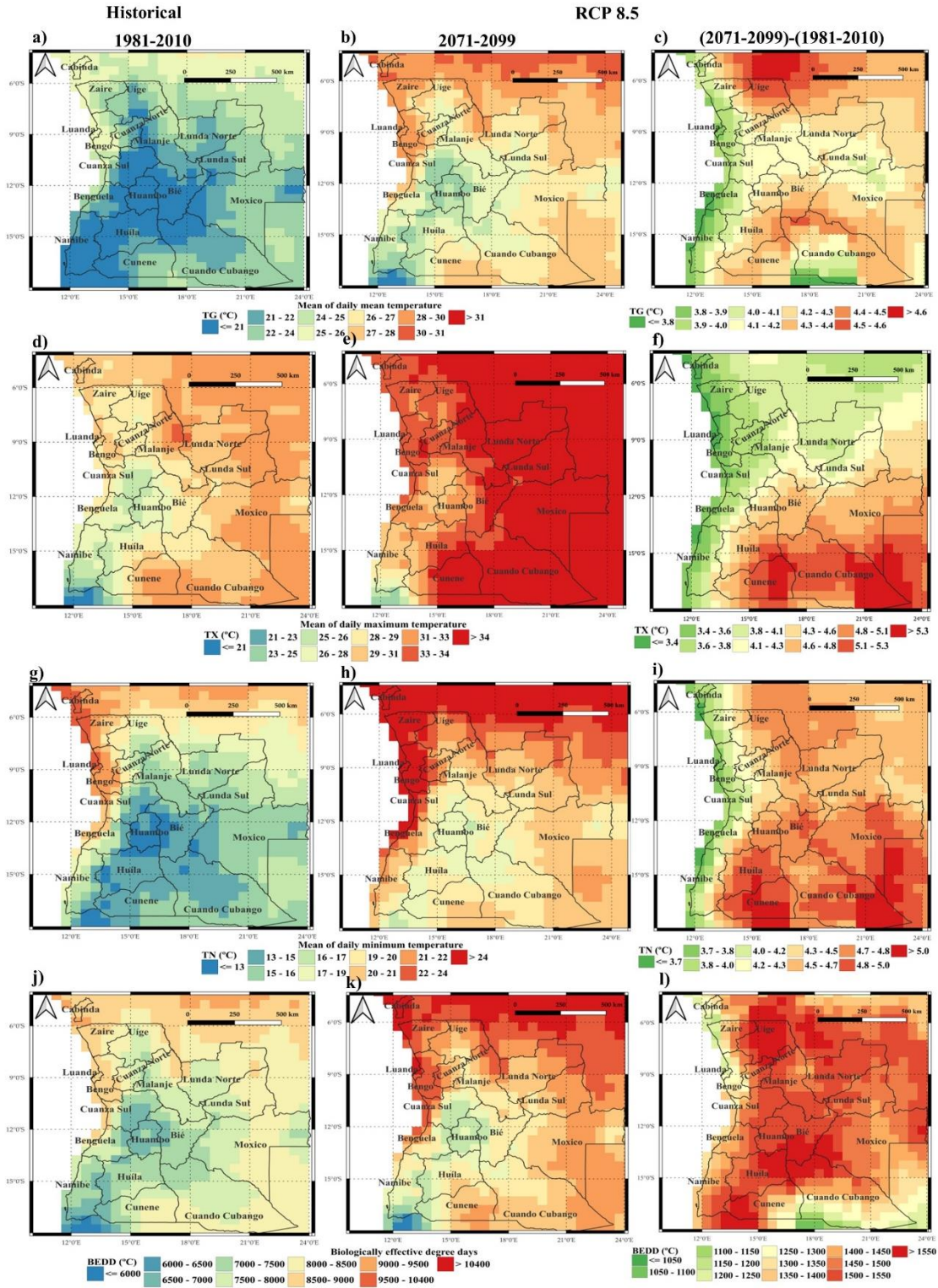
## S1. Climate projections for RCP8.5 (2071-2099)



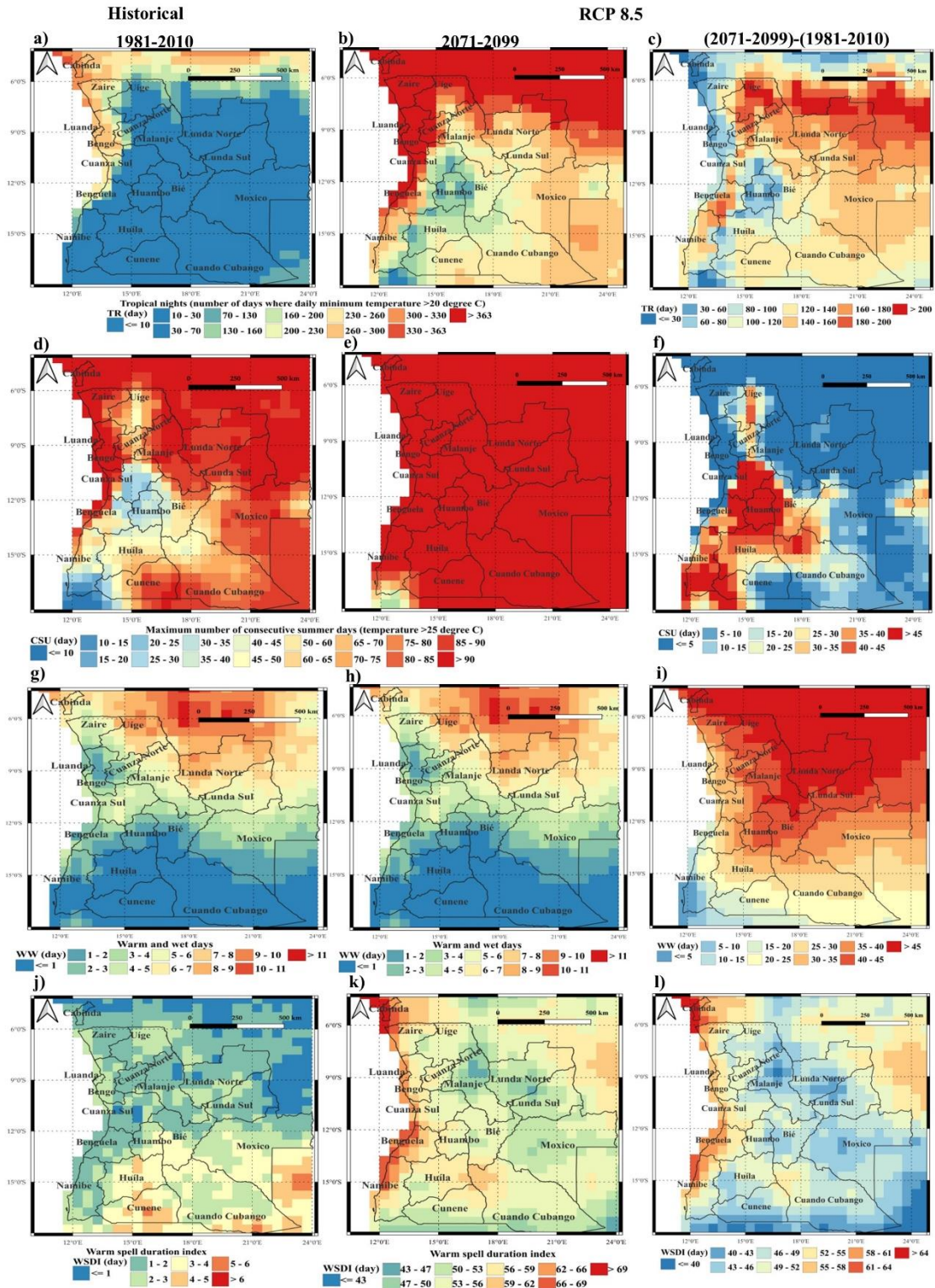
**Figure S1.** Climate means of the outlined agroclimatic indicators (RR: Precipitation sum; RR1: Wet days; SDII: simple daily Intensity index for wet days) for the historical period 1981–2010 (left panels), the 5-member ensemble mean projections for the future period 2071-2099 under RCP8.5 (mid panels), and the corresponding differences (future minus historical period). See respective legends for scales and units.



**Figure S2.** Climate means of the outlined agroclimatic indicators (R10mm: Heavy precipitation days; R20mm: very heavy precipitation; CWD: maximum number of consecutive wet days; CDD: maximum number of consecutive dry days) for the historical period 1981–2010 (left panels), the 5-member ensemble mean projections for the future period 2071–2099 under RCP8.5 (mid panels), and the corresponding differences (future minus historical period). See respective legends for scales and units.

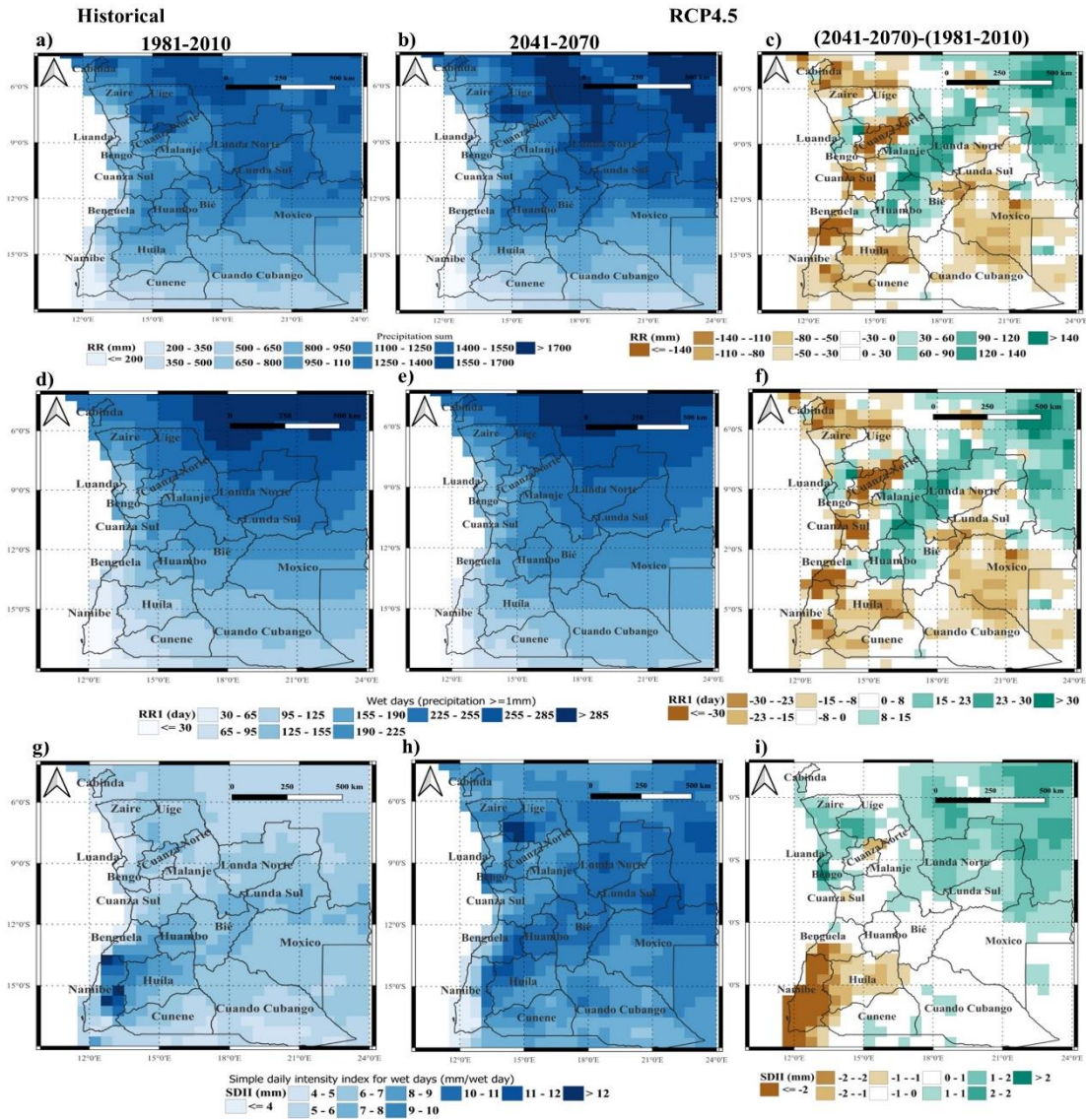


**Figure S3.** Climate means of the outlined agroclimatic indicators (TG: Mean of daily mean temperature; TX: Mean of daily maximum temperature; TN: Mean of daily minimum temperature; BEDD: Biologically effective degree days) for the historical period 1981–2010 (left panels), the 5-member ensemble mean projections for the future period 2071–2099 under RCP8.5 (mid panels), and the corresponding differences (future minus historical period). See respective legends for scales and units.

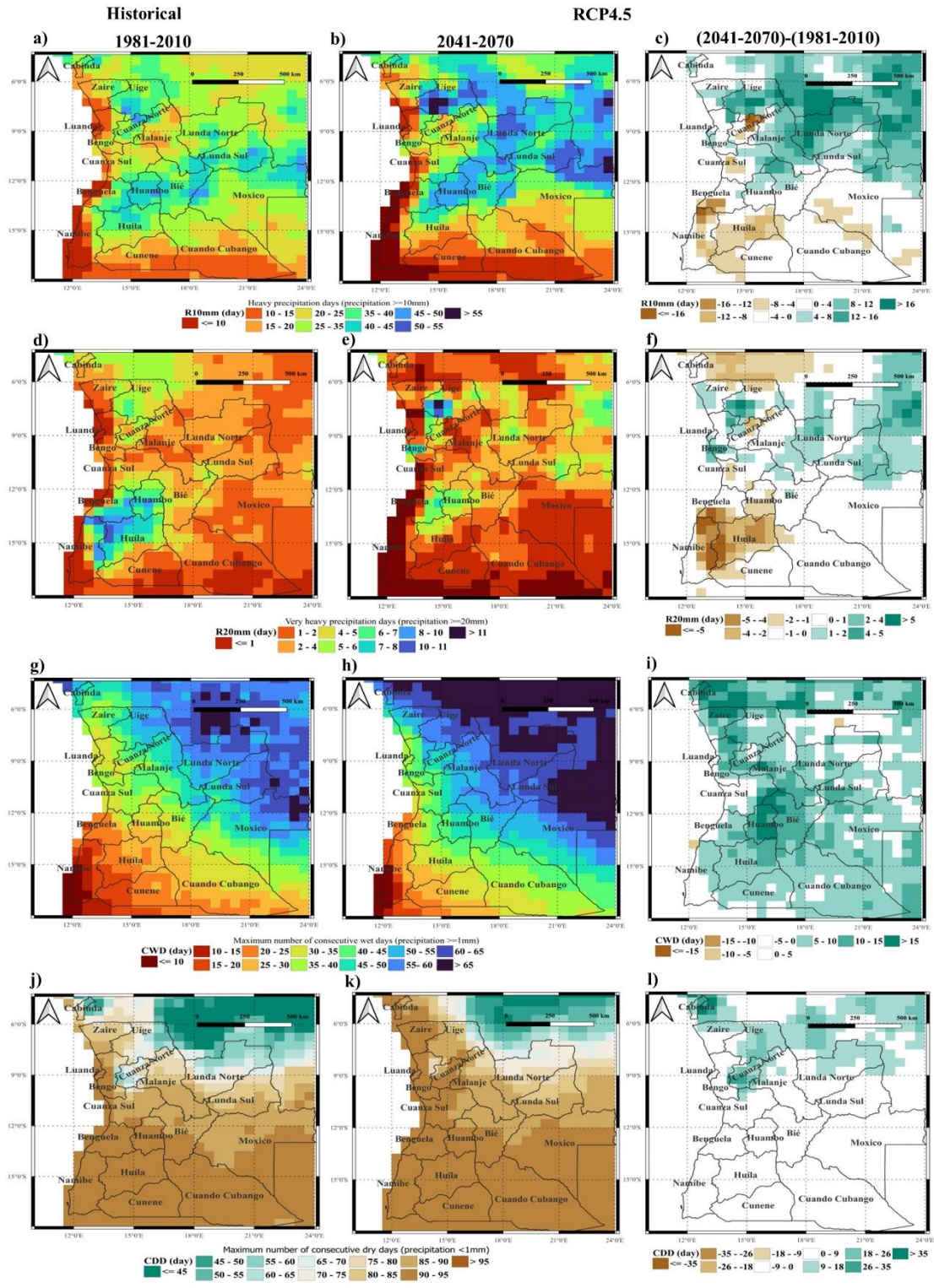


**Figure S4.** Climate means of the outlined agroclimatic indicators (TR: Tropical nights; CSU: maximum number of consecutive summer days; WW: warm and wet days; WSDI: warm spell duration index for the historical period 1981–2010 (left panels), the 5-member ensemble mean projections for the future period 2071–2099 under RCP8.5 (mid panels), and the corresponding differences (future minus historical period). See respective legends for scales and units.

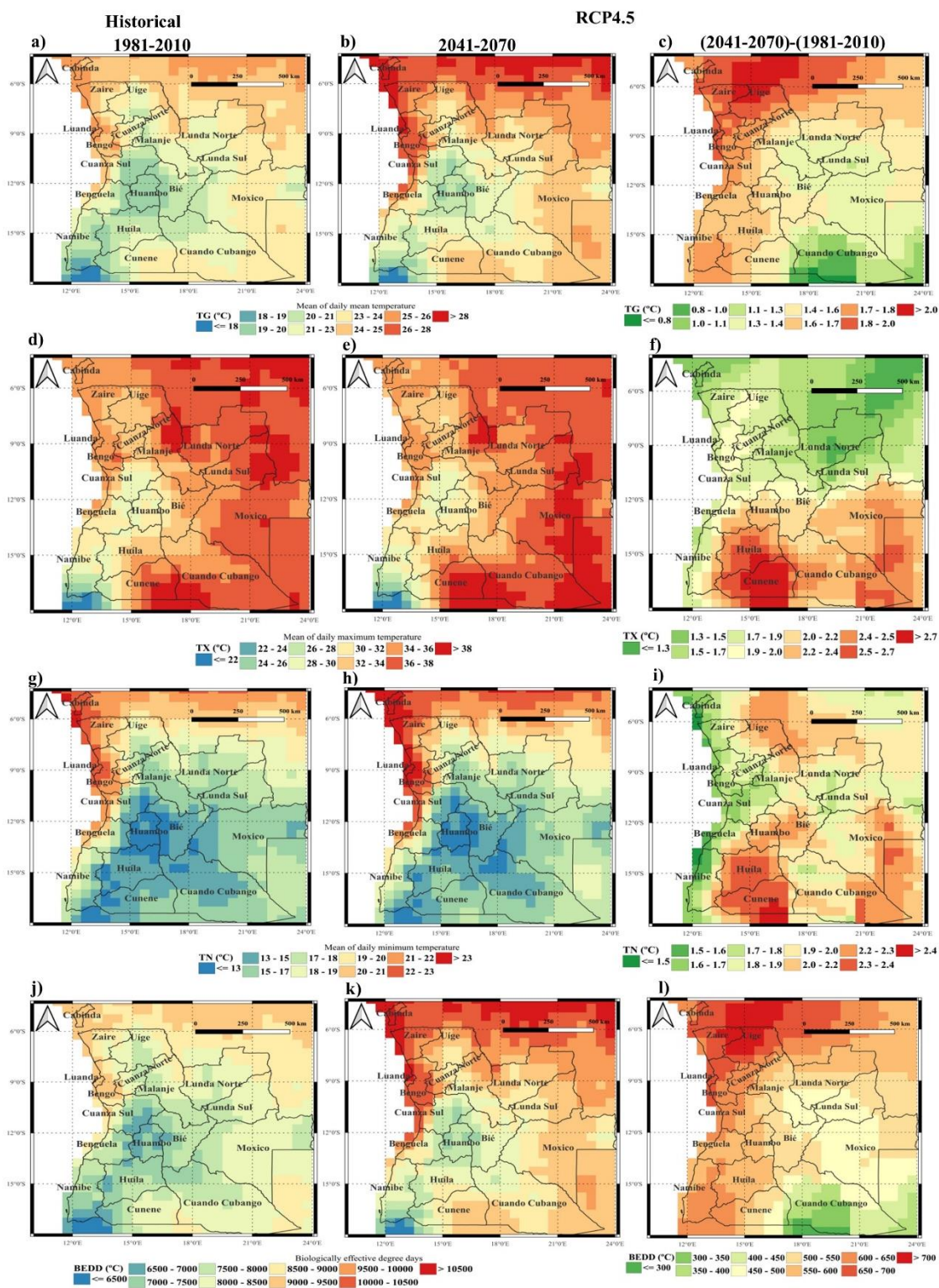
## S2. Climate Projections for RCP 4.5 (2041-2070)



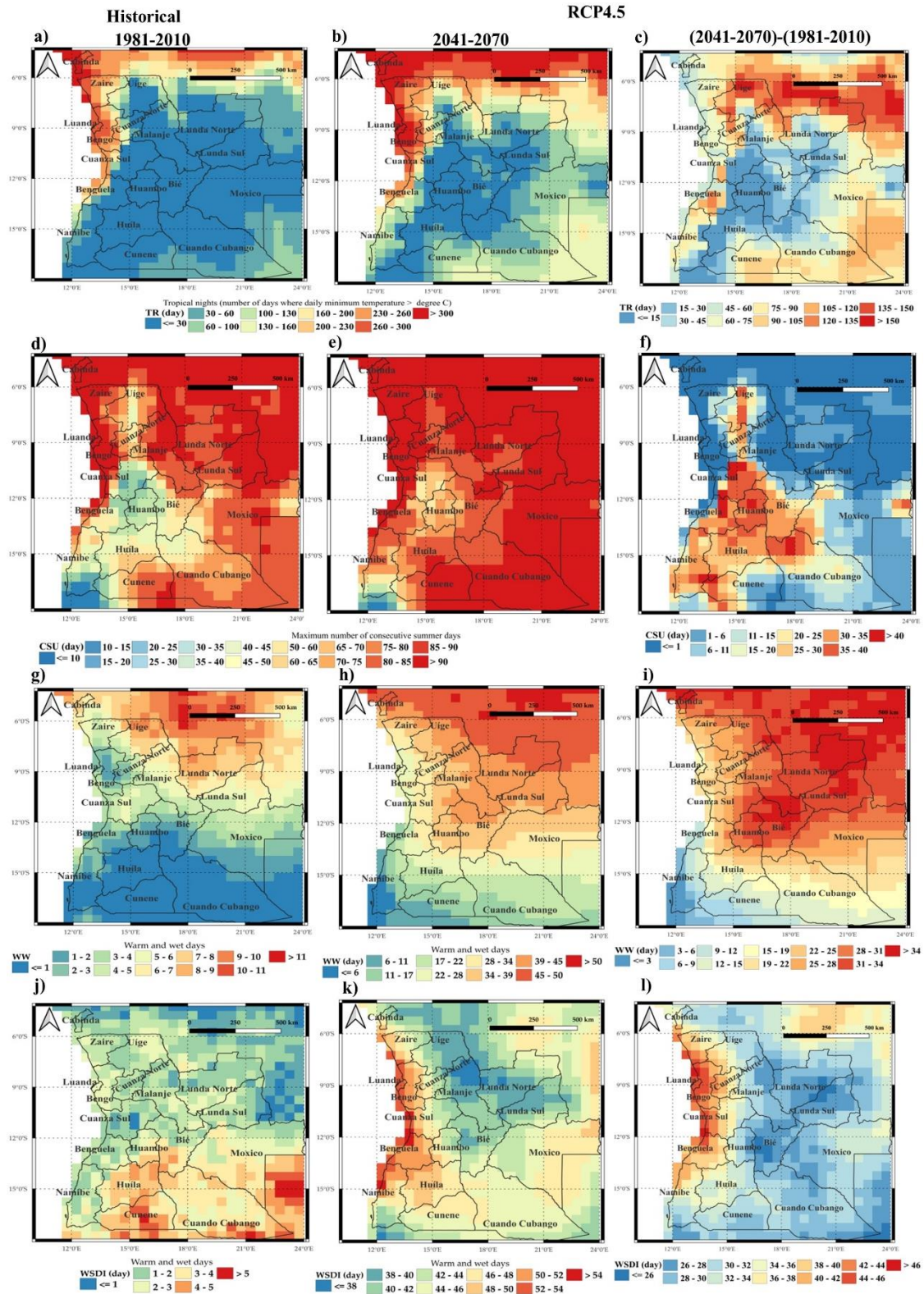
**Figure S5.** Climate means of the outlined agroclimatic indicators (RR: Precipitation sum; RR1: Wet days; SDII: simple daily Intensity index for wet days) for the historical period 1981–2010 (left panels), the 5-member ensemble mean projections for the future period 2041–2070 under RCP4.5 (mid panels), and the corresponding differences (future minus historical period). See respective legends for scales and units.



**Figure S6.** Climate means of the outlined agroclimatic indicators (R10mm: Heavy precipitation days; R20mm: very heavy precipitation; CWD: maximum number of consecutive wet days; CDD: maximum number of consecutive dry days) for the historical period 1981–2010 (left panels), the 5-member ensemble mean projections for the future period 2041–2070 under RCP4.5 (mid panels), and the corresponding differences (future minus historical period). See respective legends for scales and units.

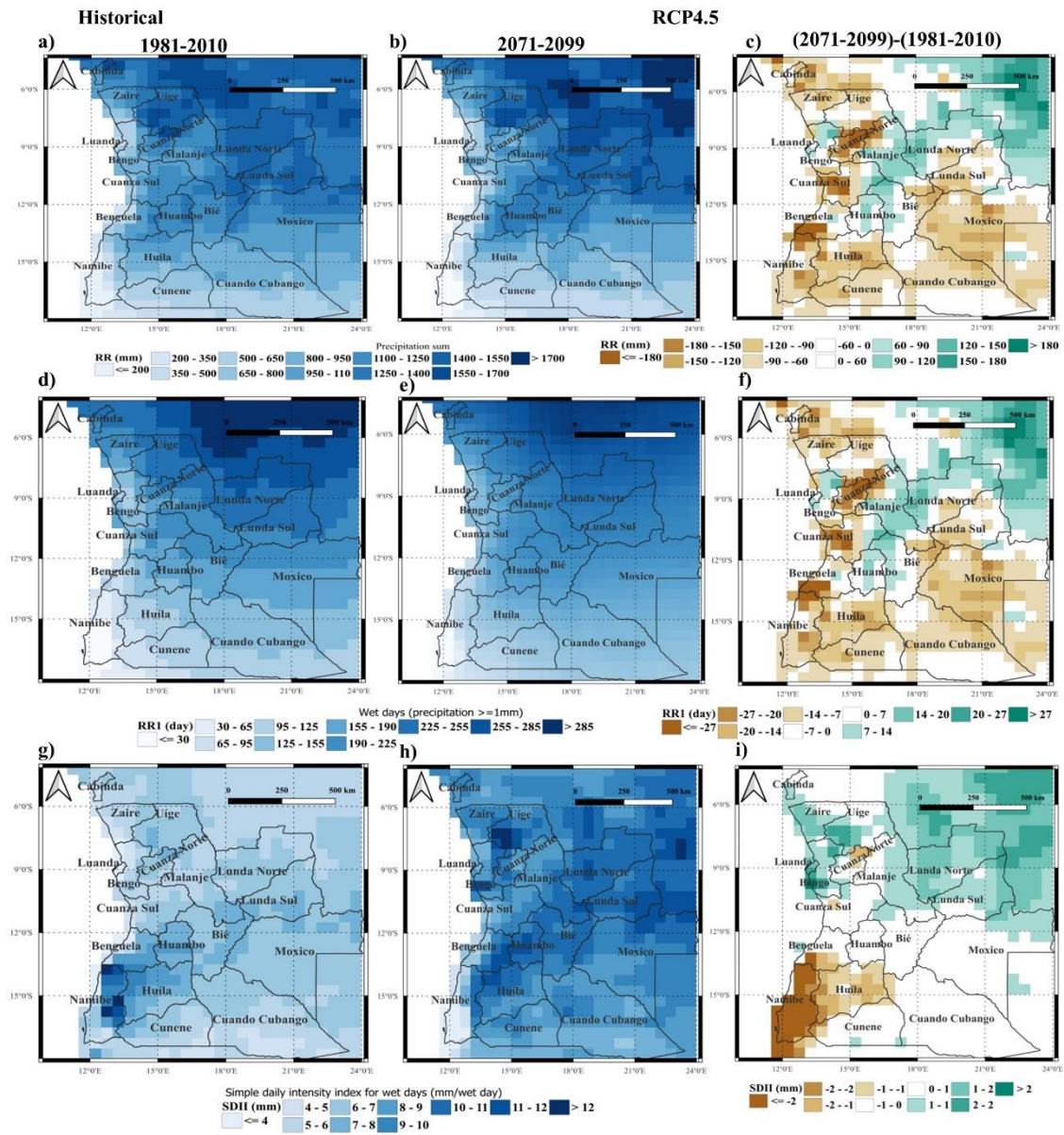


**Figure S7.** Climate means of the outlined agroclimatic indicators (TG: Mean of daily mean temperature; TX: Mean of daily maximum temperature; TN: Mean of daily minimum temperature; BEDD: Biologically effective degree days) for the historical period 1981–2010 (left panels), the 5-member ensemble mean projections for the future period 2041–2070 under RCP4.5 (mid panels), and the corresponding differences (future minus historical period). See respective legends for scales and units.

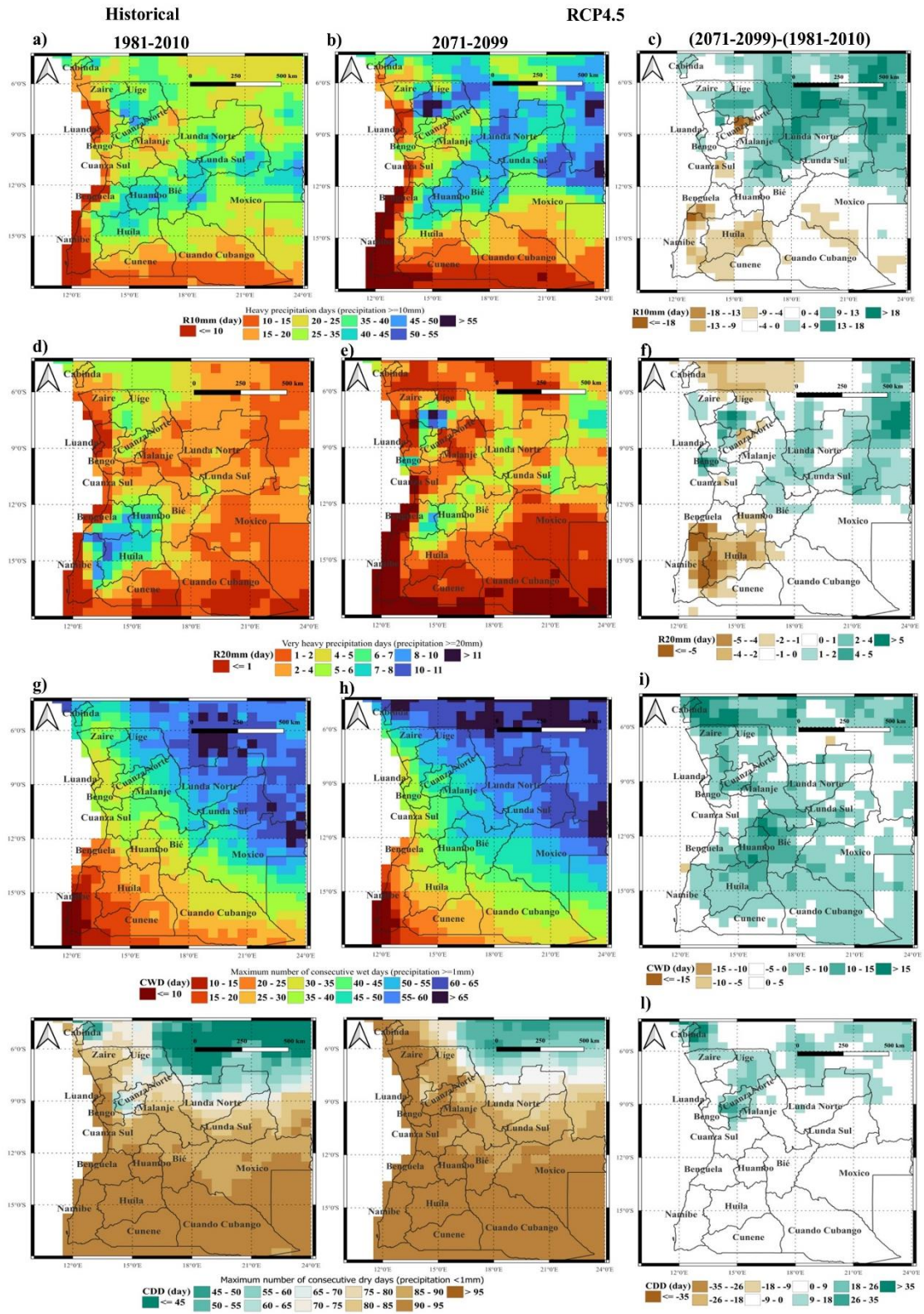


**Figure S8.** Climate means of the outlined agroclimatic indicators (TR: Tropical nights; CSU: maximum number of consecutive summer days; WW: warm and wet days; WSDI: warm spell duration index for the historical period 1981–2010 (left panels), the 5-member ensemble mean projections for the future period 2041–2070 under RCP4.5 (mid panels), and the corresponding differences (future minus historical period). See respective legends for scales and units.

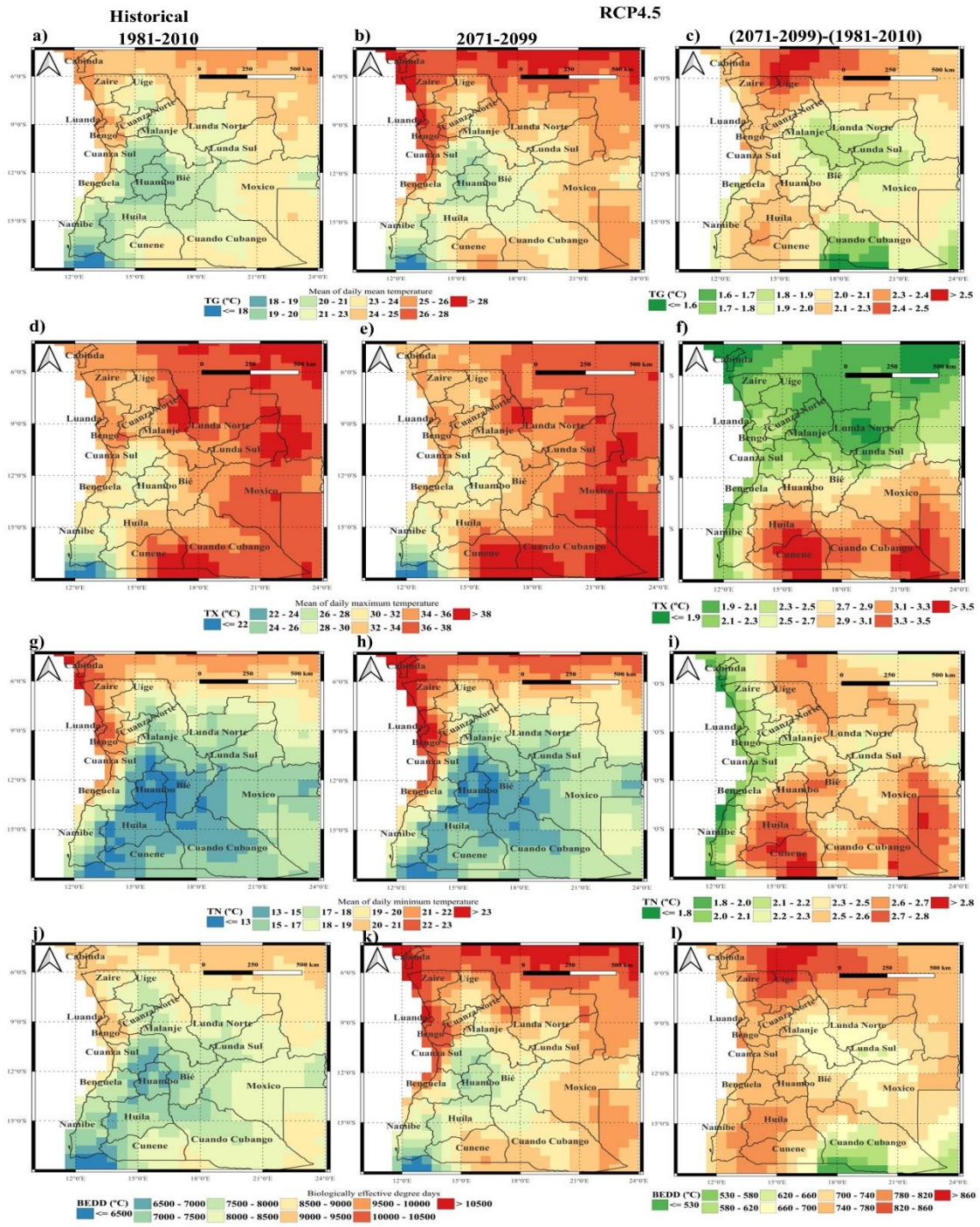
### S3. Climate Projections for RCP 4.5 (2071-2099)



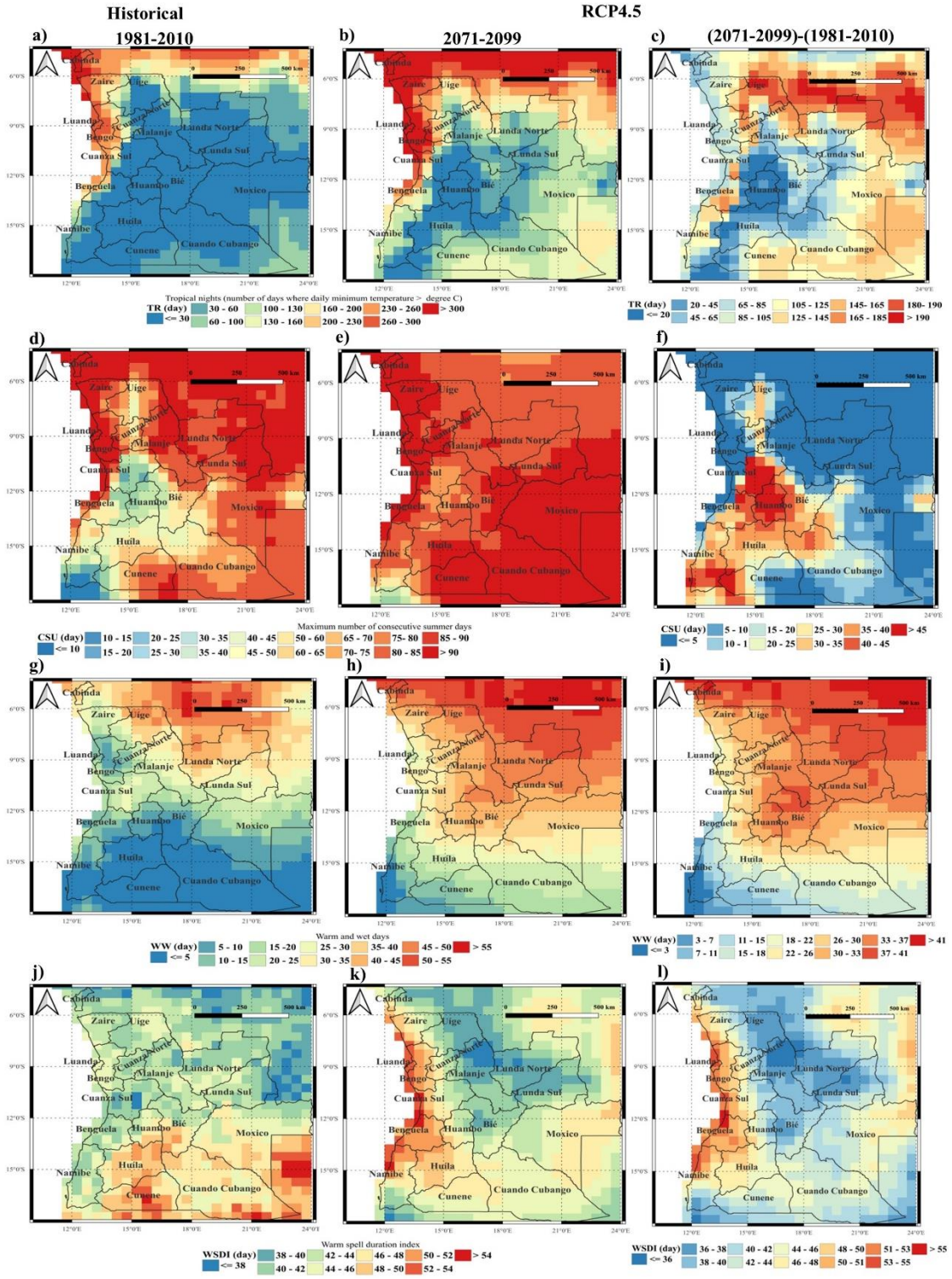
**Figure S9.** Climate means of the outlined agroclimatic indicators (RR: Precipitation sum; RR1: Wet days; SDII: simple daily Intensity index for wet days) for the historical period 1981–2010 (left panels), the 5-member ensemble mean projections for the future period 2071–2099 under RCP4.5 (mid panels), and the corresponding differences (future minus historical period). See respective legends for scales and units.



**Figure S10.** Climate means of the outlined agroclimatic indicators (R10mm: Heavy precipitation days; R20mm: very heavy precipitation; CWD: maximum number of consecutive wet days; CDD: maximum number of consecutive dry days) for the historical period 1981–2010 (left panels), the 5-member ensemble mean projections for the future period 2071–2099 under RCP4.5 (mid panels), and the corresponding differences (future minus historical period). See respective legends for scales and units.



**Figure S11.** Climate means of the outlined agroclimatic indicators (TG: Mean of daily mean temperature; TX: Mean of daily maximum temperature; TN: Mean of daily minimum temperature; BEDD: Biologically effective degree days) for the historical period 1981–2010 (left panels), the 5-member ensemble mean projections for the future period 2071–2099 under RCP4.5 (mid panels), and the corresponding differences (future minus historical period). See respective legends for scales and units.



**Figure S12.** Climate means of the outlined agroclimatic indicators (TR: Tropical nights; CSU: maximum number of consecutive summer days; WW: warm and wet days; WSDI: warm spell duration index for the historical period 1981–2010 (left panels), the 5-member ensemble mean projections for the future period 2071–2099 under RC4.5 (mid panels), and the corresponding differences (future minus historical period). See respective legends for scales and units.