

Supplementary Materials:

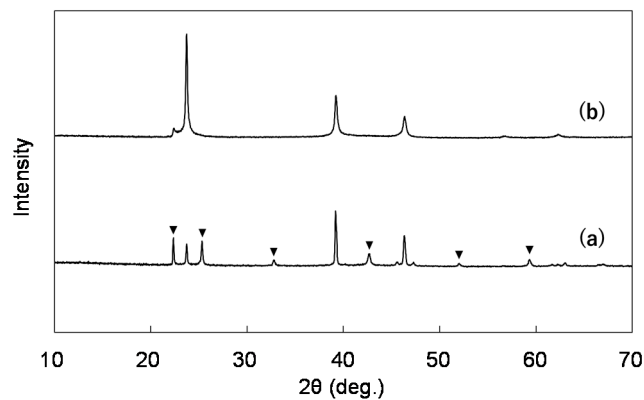


Figure S1. Demonstration of the pressure-induced phase transition from β - to γ -AgI—the peaks indicated using ▼ correspond to β -AgI (ICDD # 9–374); the unmarked peaks are γ -AgI (ICDD # 9–399); the sample heated at 148 °C was a mixture of β - and γ -AgI (a) and uniaxial pressing preferentially suppressed β -AgI (b)

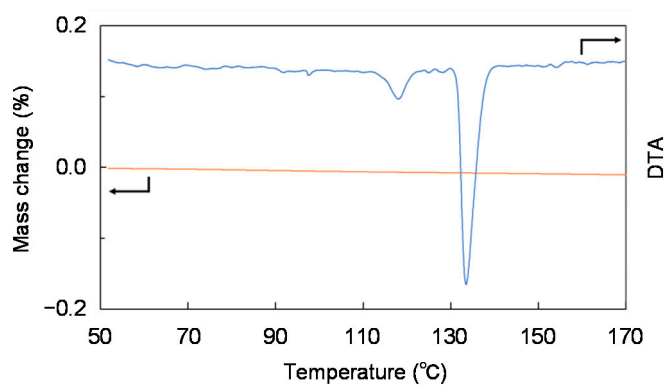


Figure S2. Thermogravimetry-differential thermal analysis curves of $x \text{ Ag}_2\text{CO}_3-(1-x) \text{ AgI}$ at $x = 5\%$

Table S1. Fitting results of the Rietveld method

x	1%	2%	3%	4%	5%
R_{wp}/R_p	0.036/0.027	0.036/0.026	0.04/0.029	0.035/0.026	0.034/0.025
S	1.64	1.57	1.75	1.51	1.51