

Article

# Drivers' Skills and Behavior vs. Traffic at Intersections

Krzysztof J. Szajowski <sup>\*,†</sup>  and Kinga Włodarczyk <sup>†</sup> Faculty of Pure and Applied Mathematics, Wrocław University of Science and Technology,  
Wybrzeże Wyspiańskiego 27, PL-50-370 Wrocław, Poland

\* Correspondence: krzysztof.szajowski@pwr.edu.pl

† These authors contributed equally to this work.

Received: 1 February 2020; Accepted: 12 March 2020; Published: 16 March 2020



**Abstract:** The aim of the work is to connect individual behavior of drivers with traffic intensity. By diversifying the populations of drivers into two categories, often considered in this type of an analysis, **CO** (cooperative) and **DE** (defective), the tendency of drivers from each of these groups to deviate from compliance with traffic rules is established. The effective driver behavior translates into disrupting traffic by slowing it down. Participant interactions are described using game theories that provide information for simulations algorithms based on cellular automata. Three different ways of using this combination of descriptions of traffic participants to examine the impact of their behavior on the traffic dynamics are shown. Directions of the further, detailed analysis are indicated, which requires basic research in the field of game theory models.

**Keywords:** road traffic; driver's interaction; game model; mixed equilibrium; Bernoulli trials; estimation of structure parameter

**MSC:** Primary 68Q80; Secondary 90B20; 90D80

## 1. Introduction

The considerations of this work relate to traffic modeling at intersections or places where vehicle interaction can change the behavior of a vehicle stream. The area of the problem formulated in this way is relatively wide due to the possibility of examining both complex situations and individual events on the road. Although objects occurring in traffic are of considerable size, similarity to mesoscopic systems is observed, i.e., those that fit between the micro world (in systems of single atoms or molecules described by quantum mechanics) and the macro world (in objects consisting of a very large number of particles, subject to the laws of classical mechanics). A comprehensive review of the literature on various issues of modeling circular motion can be found in the paper by Albi et al. [1]. We are interested in linking statistical behavior of drivers with the dynamics of vehicle streams. To this end, we must select the appropriate model describing the behavior of the driver-vehicle system and link it to the description of the stream of vehicles on the roads in the analyzed area. Although probabilistic modeling of driver behavior and vehicle traffic is a natural research method (v. [2,3]), the combination of these two elements constantly leaves many questions and is the subject of research. Calibration methods are difficult; we only have access to many factors describing the vehicle–driver system through symptoms. That is why we are looking for a link between observable driver characteristics and vehicle stream parameters. In these considerations, mathematical modeling of behavior using game theory methods should become a facilitation.

The literature related to traffic modeling at intersections is very extensive, and vehicle traffic on the road is considered in many aspects. Research on theory and modeling of traffic at intersections began in the 1930s. The paper [4] by Greenshields was a pioneering work in this field. He used photographic measurement methods to calculate traffic volumes, and predict and explain possible observation trends

in reality. The interest in this field has increased significantly since the 1990s, mainly due to the high development of road traffic. To study the dynamics of motion, many models have been proposed, e.g., Zhang's hydrodynamic models proposed in [5] and a list of scientific journals during 1994–2002, or models based on gas kinetics developing in a similar period, e.g., proposed in 2001 by Helbing et al. [6]. A different approach was presented by models related to car models, and the breakthrough was the use of cellular automata in 1992, which proved to be an easy and efficient method of modeling movement. Several models have been developed to depict various aspects of road traffic. At the same time, an area was developed dealing with issues related to the interaction of drivers at intersections. One approach in modeling driver behavior at an intersection refers to concepts related to game theory (cf. [7,8]). There were also many publications focused on the proper selection of traffic lights so as to minimize the number of cars waiting before the intersection, and research was conducted on the psychology of human behavior itself, which was also reflected in modeling of traffic.

We focus on the impact of the behavior of individual drivers in moments of interaction with another driver on the ownership of the stream of vehicles (cf. [9]). Cellular automata are mathematical objects for modeling various phenomena (cf. [10]). The creator of cellular automata is Janos von Neumann [11], a Hungarian scientist working at Princeton. In addition, Lviv mathematician Stanisław Ulam [12], who was responsible for the discretization of time and space of automata, and considered the creator of the term cellular automata as “imaginary physics”, had a significant impact on the development of this area. They are used in many areas of science, in modeling physical phenomena and interactions between objects. They are also applied in modeling of movement. The basic knowledge of the traffic simulation method used in the paper can be found in the paper by Mańcki and Szmajdziński [13] (cf. [14] (Section 2), [15]). According to Ilachinski [10], cellular automata can reliably reflect many complex phenomena using simple rules and local interactions. They are a network of identical cells, each of which can assume one specific state, with the number of states being arbitrarily large and finite. The processes of changing the state of cells are carried out in parallel and in accordance with applicable rules, usually depending on the current state of the cell or the state of neighboring cells. Basically, three ways of modeling traffic at intersections described by driver interactions were selected in the research presented in this paper. Assumptions, resulting rules, and evaluation of consequences for participants were introduced into the functioning of the sample intersection network. Each of the models was simulated using cellular automata.

Because, in reality, drivers do not always follow the rules of traffic, their behavior is linked to traffic parameters in the constructed and analyzed models. It has been assumed that drivers generally comply with the provisions of the highway code, but in some situations they tend to depart from them and break the rules, causing disruptions resulting in a slowdown of traffic (cf. [16]). Details of driver behavior modeling are included throughout the work, and a more comprehensive introduction is provided in Section 1.1. Although there are more possible models in this area, which we mention below, we focus on three of them. Their precise descriptions are given in Section 1.4. The considered drivers' interactions are modeled using the game theory apparatus and methods of the mass service theory.

In traffic modeling or the use of transport, game theory methods appear naturally. In the models analyzed in this work, the strategic behavior of drivers is of an auxiliary nature, which is signaled in the right places when introducing and analyzing models. For a more complete picture, in the next section, we signal some other traffic problems analyzed by creating mathematical models.

### 1.1. Driver Decision Models

Fisk [17] in 1984 described correspondences between two game theory models (Nash noncooperative and Stackelberg games) and some problems in transportation systems modeling. An example of each is described in detail, namely the problem of carriers competing for intercity passenger travel and the signal optimization problem. The discussion serves to underline differences between two categories of transportation problems and introduces the game theory literature as a potential source of solution algorithms. In addition, it is shown that inner–outer iterative techniques for Stackelberg type problems

cannot be expected to converge to the solution, and an approximate formulation of these problems is introduced, which appears to be more readily solvable. However, this discussion is far away from determining driver modeling. Here, the two equilibrium concepts, Nash and Stackelberg, respectively, can be used to discover which action set or strategy is optimal for every participant in the game. The participants are drivers. Optimality in this context is evaluated on the basis of payoffs resulting from the decisions by (and interaction among) the participants (v. the monographs by Ferguson [18], Owen [19], Platkowski [20], and Mazalov [21]). Payments in traffic modeling games come down to passing times—their shortening or lengthening.

In issues that have the common trait that decision-makers know that their result cannot be achieved at the expense of their community, one cannot rely solely on pure antagonist game models. Instead of talking about modeling the game, it is better to think about modeling the behavior of project participants. The existing objective dependencies mean that decision-makers are motivated to take into account these dependencies and generally do not act independently, although they are not able to agree their actions and form formal coalitions. One can only assume that they are motivated to coordinate their proceedings. This, in turn, forces us in modeling to adopt appropriate sets of strategies or otherwise model information available to players. Achieving a common optimal result in an orthodox model of game theory does not introduce a general reason or justification for choosing the right strategies. It is known that, in the simplest cases, participants in a joint project generally easily coordinate their decisions without difficulty. The recognition of this in the mathematical model is not known today, because the actual mechanisms of such coordination, the way to achieve it is poorly understood. There are theories explaining strategic coordination, but their implementation in the mathematical model has limited application. The reason for this is the need to change the specifications of the game and make incredible assumptions. By adopting Stackelberg's extreme rationality, according to which players only choose strategies that maximize their own profits, in conditions where co-decision makers can always foresee opponents' strategies and respond to them as best as possible, we avoid these problems. This makes it possible to clarify strategic coordination in the common interest of all project participants. Previous experimental encouraged this approach. They showed that Stackelberg's approach in asymmetrical games is rational.

Only vehicles are regarded as the game participants. Kita et al. [8] adopted a game theoretic analysis to consider a merging–give way interaction between a through car and a merging car, which is modeled as a two-person non-zero sum non-cooperative game. Kita's approach can be regarded as a game theoretic interpretation of Hidas' driver courtesy considered in [22] from the viewpoint that the vehicles share the payoffs or heuristics on the lane changes, which is a reasonable traffic model but fails to assign uncertainties resulting from the action of the other human drivers. Moreover, one cannot guarantee that the counterpart would act as determined in the game since the counterpart may be able to consider other factors that the subject driver cannot take into account. Accordingly, it is necessary to design an individual driver model that does not share their payoffs in the decision making processes to reflect such an uncertainty. This approach, as we show below, facilitates a more realistic model of driver behavior in traffic situations. It can be found, e.g., in [7].

The behavior of drivers crossing the intersection or joining traffic from another road is a potential source of conflict with another road user. An additional element intensifying the conflict are various assessments of the situation resulting from different levels of skills and the ability to use them. The controllers (drivers) can be divided into two types in a simplified way (cf. Paissan and Abramson [23], Fan et al. [24], and Yao et al. [9]):

- **Regulatory drivers** are abbreviated as **CO** (*Cooperator*).
- **Non-compliant drivers** are abbreviated as **DE** (*Defector*).

Although we see a natural possibility of distinguishing between a lack of knowledge of traffic rules and their non-application (conscious or unconscious), we leave such detailed analyses for further research. In the subsequent analysis, it is assumed that each of them will react according to the category.

Traffic models and driver behaviors are generally generic and require calibration to suit their place and time of use. Performing such a procedure requires obtaining relevant data and the use of adequate statistical methods. The specificity of the problem leads to the formulation of basic research problems in both modeling and statistics. This is signaled by numerous publications on road engineering, road safety and related problems, such as driver behavior (cf. Ding and Huang [25] and Bifulco et al. [26]). Some questions may be solved by choosing and adapting models known as decision theory. Some of the elements discussed in this article are the skills and behavior of drivers. We suggest using Bayesian and minimax estimation methods to assess the parameters associated with modeling the distribution of drivers' characteristics (cf. [27], p. 17, [28]).

### 1.2. Intersections, Drivers and Traffic

Intersections are an inseparable element of road traffic (cf. [29], Section 1A.13, def. 94). In this consideration, it is assumed that they are equal without junctions regulatory (for further information concerning classification of crossroads can be found, e.g., at the OSK Duet driving school website, *Virtual driving school*, <http://oskduet.pl>). At such intersections, priority is given to road signs defining one of the roads as the main road and the other as the subordinate one. In the absence of signs, the so-called right-hand rule that gives priority to all vehicles on the road on the right. Not all road users obey the rules cited above (cf. the dichotomous classification of the drivers above at page 3). It often happens that drivers enforce the right of way at intersections, thus forcing other traffic participants to slow down, or sometimes causing collisions or traffic accidents. The effects of such behavior are further explored in the work presented. When developing the research that is the subject of this work, it is worth remembering that the intersections are different and you need to consider the topology of the intersection in mathematical models.

To create a model of vehicle movement, we will distinguish a description of the behavior of individual participants (vehicle–driver) and a description of the dynamics of the location of all vehicles in the analyzed region. We describe the changes in the position of the vehicle in the intersection using the cellular automata method and Nagel and Schreckenberg's model (**NaSch**, v. [30]) described in the Section 1.3. This is a proven method that allows testing the impact of changes in driver behavior on vehicle flow parameters. However, in the description of the dynamics of traffic at the intersection, three elements can be distinguished, the specification of which is important for aspects of interest to us. Those are:

- (i) **Identifying road elements** boils down to the rules of right-hand traffic. This means that priority is given to the one on the main road when meeting at the intersection of two vehicles, i.e., the one who sees the second vehicle on its left (priority of the road on the right-hand side). This objective determination is transformed by decision makers. It is known that the main reasons for perturbation in the stream of vehicles are driving behaviors that do not comply with traffic rules (v. [16,31]). Earlier studies by Mesterson-Gibbons [32] have found various quantifications of driver behavior; however, two categories of drivers have been adopted for the purposes of this study. By convention, they are those who follow the rules of the road (**CO** drivers) and those who do not comply with them (**DE** drivers). With the approach used to analyze the phenomenon, the proportions of the types of drivers present in the population in the analyzed area are significant.
- (ii) **Determining the behavior of drivers** is based on the fact that at each meeting, before the settlement of traffic in the next step (nearest second), the type of driver is identified, and, on this basis, his decision is determined, which translates into vehicle behavior. There are several ways to identify the types of individual drivers in the considerations. In the models selected for detailed analysis, the method of determining the driver's behavior is different and depends on the assumptions made earlier in relation to the rules functioning in everyday life.
- (iii) **Priority assignment** at the intersection results from setting their priorities based on the types described above and assigned to drivers. Costs (in units of increasing or decreasing speed)

related to strategies adopted by drivers are determined. Depending on the adopted model, the payout values are different.

For our research, we accept the street topography previously used by Paissan and Abramson [23] or Mesterton-Gibbons [32]. The traffic system consists of a network of equivalent streets, four of which run north–south and four east–west, forming a regular grid. Each road is single-lane and one-way, but the directions of vehicle traffic are different. Cars on two of the horizontal streets move from right to left, and on the other two in the opposite direction. The same situation occurs in the case of streets arranged vertically; the direction of two is facing downwards, and the other twos are facing upwards. There are no right-of-way streets, thus the right-hand rule applies in the presented system. Sixteen road junctions and four directions of travel are possible: from top to bottom, from bottom to top, from right to left, and from left to right. Therefore, four types of possible meetings of drivers on the road are received and each other driver gets the right of way. In Figure 1, vehicles and their direction are shown by arrows. The arrows indicate vehicles and their return indicates the direction of travel. Green symbolizes the right of way, and red means that the car, according to the right-hand rule, gives way. This topography is a simplification. Thanks to symmetries and uniformity, traffic analysis at such an intersection is easier and allows for proper interpretation of the results.

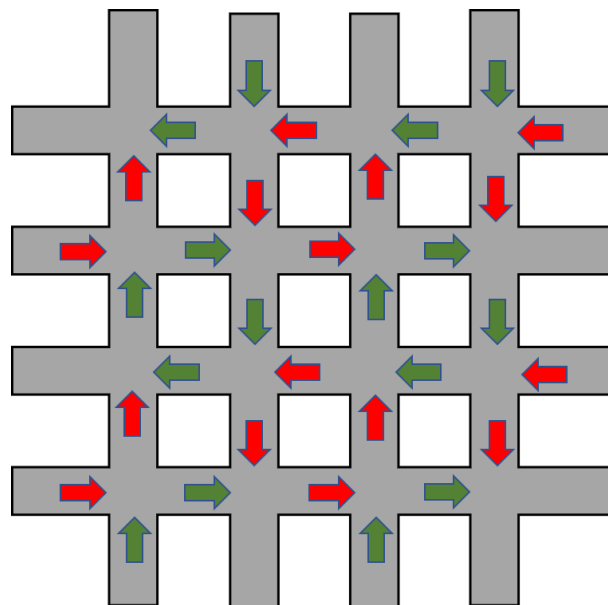


Figure 1. The street system under consideration.

### 1.3. Nagel–Schreckenberg Model

An efficient method of traffic simulation was proposed by Nagel and Schreckenberg in 1992 by German physicists, published in [30]. It presents the movement of cars on a straight one-lane and one-way road. The road was divided into 7.5-m sections corresponding to the average length of an average car along with the distance in front of and behind the car. Each of these sections is represented by a single cell of the automaton. The cell can be empty or occupied by one vehicle. Each vehicle  $i$  has a specific speed  $v_i$ , which informs about the number of cells it will travel in one time step, with the speed not exceeding the set maximum speed  $v_{max}$ . The transition function ( $v$ . [14] Section 2, [15]) responsible for the movement of vehicles consists of three stages, occurring simultaneously for all objects:

- (i) **Acceleration/Braking.** The car increases its speed by one, if it is not higher than the maximum speed and the number of free cells in front of it. When the distance to the car ahead is less

than the current speed, the vehicle slows down to a value equal to the empty space in front of it. In the mathematical notation it looks like this:

$$v_i(t + 1) = \min(v_i(t) + 1, v_{max}, d_i). \tag{1}$$

(ii) **Random event.** A car with a certain probability decreases its speed by 1, provided it is not less than zero. The equation for the described situation is as follows:

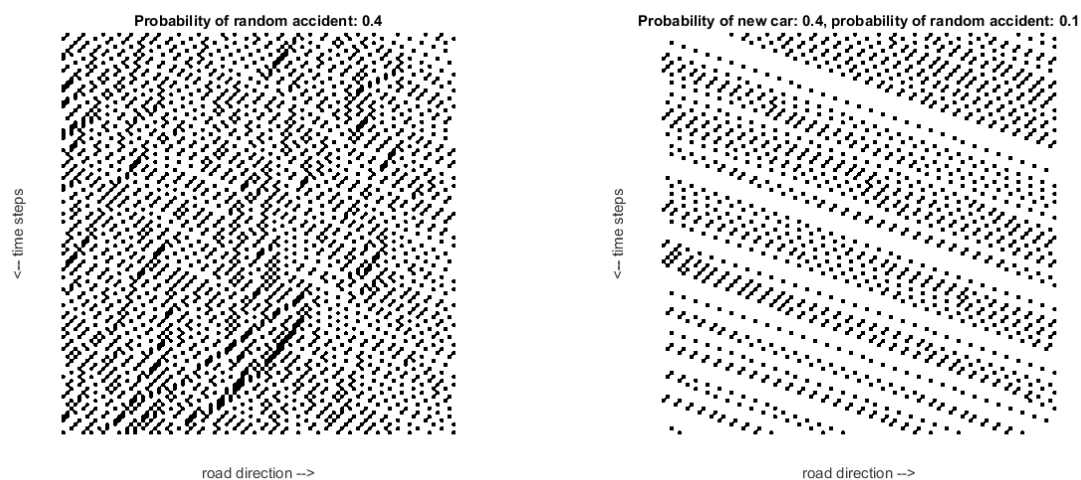
$$v_i(t + 1) = \begin{cases} \max(v_i(t) - 1.0), & \text{with probab. } p \\ v_i(t + 1), & \text{with probab. } 1 - p. \end{cases} \tag{2}$$

(iii) **Update position.** The car moves as many cells as its current speed, according to the formula:

$$x_i(t + 1) = x_i(t) + v_i(t + 1). \tag{3}$$

The NaSch model reliably reflects the movement of vehicles on the road and the mutual interactions of drivers. One example that is noticed when analyzing the results of simulations is the occurrence of start–stop waves, showing how sudden braking of one driver affects other road users.

Figure 2 presents a cellular automaton built in accordance with the assumptions of the Nagel–Schreckenberg model. Black cells symbolize the presence of a car, and white symbolizes its absence. The simulation was performed for a periodic boundary condition. The vehicle leaving the space of the machine goes to the queue of cars waiting to enter the network, where the appearance of a new object occurs with a certain probability, which is 0.4 in the experiment presented in Figure 2a. Cars move to the right; each subsequent row in the presented figure illustrates the next iteration of the program—traffic situations in the next time step. In some places, there are temporary densities of cars, caused by a sudden stop of one of the drivers, as a result of which others are also forced to slow down. The occurrence of higher densities is called backward plug. This phenomenon is observed as the effect of traffic lights. The presented situation corresponds to a small density of congestion, because one car releases one car behind it, and then returns to traffic. It can be seen that one vehicle stopping causes a chain of stops for subsequent cars. For comparison, Figure 2b presents the situation for lower traffic density and lower probability of random events, where a smoother process of vehicle movement is noticeable.



(a) New object appears with probability 0.4.

(b) New object appears with probability 0.1.

**Figure 2.** Simulation of motion according to the assumptions of the NaSch model.

#### 1.4. Manuscript Organization

The purpose of the research presented here is to analyze the impact of behavior, in particular interactions, of predefined types of drivers on traffic performance. Three ways of drivers' type influence are modeled and their behavior consequence on traffic at intersections are investigated. In each of the analyzed problems, we examine different aspects of traffic at the intersection. The first presented model researches the case of the constant probability of individual types of drivers. It shows how the presence of non-compliant drivers negatively affects the quality of road traffic. When costs received by drivers in conflict situations are quite high, no collisions occur frequently, there are not so many non-compliant drivers on the roads, and most road users are aware of the consequences of reckless driving. This is disused in Section 2. In the next section, we focus on modeling the psychological aspects of road participation. This is an extension of the research in Section 2 in the sense that we pay more attention to the behavior of participants due to their tendency to violate traffic law and to cooperate with other road users. Consequently, the research in Section 3 shows that, given a certain group of drivers resistant to imitation strategy and always deciding to comply with the law, we are able to influence the final distribution of types of behavior. The model analyzed in Section 4 is a special case of that in Section 3. However, we examine here the reasons drivers violate traffic rules as a link to increased traffic congestion. As a consequence, we believe that traffic disorder increase improper behavior. It has been detected that above a certain degree of congestion the traffic situation reaches certain limits of good performance. Each of the models was simulated using cellular automata. A summary of the considerations in Sections 2–4 is contained in Section 5. The proposed modeling of street traffic allows the study of real traffic and, as a consequence, the determination of parameters not known a priori, such as the participation in the traffic of non-compliant drivers, delay time, or percentage speed delay, which significantly increases the tendency of behavior causing further problems in road traffic. This aspect is the subject of Section 6.

## 2. Simulation Analysis and Discussion of Generalizations for Model I

### 2.1. Model Description

The purpose of the first model is to check the impact of drivers who do not comply with traffic rules on its overall functioning. The driver type is generated with a certain probability. The chance to draw a driver who complies with the rules is  $p$ , while for a driver who does not comply with traffic rights,  $1 - p$ . Paissan and Abramson [23] introduced a periodic boundary condition. After leaving the network, the cars are placed in a queue, from which they go to a randomly chosen road, regardless of the street they left. Traffic is updated in accordance with the assumptions of the Nagel–Schreckenberg model. The proposed model assumes a maximum speed of 1. This assumption does not correspond to the real performance of vehicles on the road, but makes it possible to explain the suggested payouts in games. The games imitate the meetings of drivers at intersections, and the payout matrix informs about the costs incurred during the maneuver [21]. During the meeting of drivers at the intersection, **four scenarios** are possible:

- (i) Both drivers are cooperators (CO).
- (ii) The driver driving on the right, i.e., the one with priority, is a non-compliant driver.
- (iii) The driver on the left, i.e., the one who should give way, is a driver who does not comply with the rules.
- (iv) Both drivers do not follow traffic rules.

In the first situation, both drivers comply with the rules, so one of the drivers will give way. The second scenario will not end in a conflict either, because the driver who is about to give way complies with the rules. The other two options do not have a definite solution. In the third event, the driver with the priority does not give up the road. It is assumed that this will result in the loss of  $a$  time for each participant. The most conflicting is the last case when two leading non-compliant

drivers meet at the intersection, and therefore there is a risk of collision, which is a waste of time greater than before. The time the driver needs to cross the intersection is used as payoff values in games represented as non-zero matrix games (v. [20,21,33]). An example is Table 1, showing the time it takes to cross the intersection in units of simulation steps.

**Table 1.** Costs of an interaction between different type of drivers.

	<b>Right</b>		
<b>Left</b>		<b>CO</b>	<b>DE</b>
	CO	(2, 1)	(2, 1)
	DE	$(d_{DC}^{ld}, d_{DC}^{rd})$	$(d_{DD}^{ld}, d_{DD}^{rd})$

The left driver is approaching the intersection on the left, so he has no the right of the way and he has no priority. He suffers a loss of 2, these are two simulation steps he needs to take to give way and then cross the intersection. Parameters (payoffs) could be  $d_{DC}^{ld} = a$  and  $d_{DD}^{ld} = b$  to show the costs incurred in the event of a collision on the road. In [23], it is emphasized that the adoption of the same costs for the left driver **DE** and the right **CO** is a simplification. In fact, it is more complex and usually **CO** delay more than **DE**. As a possible extension, the authors suggested  $d_{DC}^{rd} = c > a + 1$ . The further discussion of the issue is given in Section 2.4, where the type of driver is interpreted in terms of their strategies.

The above situation corresponds to an event in which both drivers are punished for the conflict, but, to avoid a collision, one waits longer. It would be necessary to agree who will be considered submissive. In the simulation below, the originally proposed values were retained. There will be a situation when the drivers at the intersection “overlap”. However, due to the earlier expectations, it is assumed that in real life a collision at the intersection would not occur. One of the drivers would allow an opponent to cross over.

In the analyzed case, described above, it was assumed that the occurring drivers belong to two categories and each driver belongs to one of them. The ratio of driver types is constant and known. This allows simulation testing of the consequences of such an assumption. The described model can also be used to analyze real traffic (real driver behavior) to determine this ratio, as in Section 2.4.

### 2.2. Simulations

A network of streets with a length of 50 cells was considered. The authors of [23] proposed to introduce penalties for a collision of 100, but it was reduced and the value 50 in this work. The cost incurred in the conflict: the left driver who did not comply with the rules, the right driver who followed the rules in accordance with the proposal used the values of 3. In the first significant step, a driver queue was created and the correct types were assigned to them with certain probability. The queue reached the maximum number of vehicles on the road. Vehicles presented in it were introduced into the network. Traffic was carried out in accordance with the assumptions of the **NaSch** model, with a low probability of random events and a maximum speed of 1. According to the recommendations of the model creators, updating position on the road should be asynchronous, thus, with each iteration of the program, we drew a different order of road updates. Roads 1–4 are in the horizontal direction and Roads 5–8 the vertical direction. Drivers on even roads followed the natural turn, and drivers on odd went in the opposite direction. By performing a single move for each street, the obtained results were placed in the appropriate positions on the network. The next stage was the analysis of behavior at intersections. The first 50 steps were skipped to allow the entire system to be filled with cars. The areas before and at the intersection were taken into account. As per the authors’ recommendations, the intersection results were also updated in a random order. In the event of a meeting of two drivers at the intersection, the individual waiting time for each of them was set. It was calculated according to the values in Table 1, minus 1, because the time needed to cross the intersection was not taken into account. Waiting time was then used in the previously mentioned algorithms for updating road



positions. A vehicle ordered to wait could not increase its speed until the designated number of steps had elapsed. Simulations were carried out for various driver relations on the road.

### 2.3. Outcome of Simulations

The parameters that can be modified are the maximum number of cars, the probability of introducing a new vehicle, and the probability of occurrence of individual types of drivers. At the beginning, three examples are presented for different relations of drivers, for each the probability of a new car is 0.3 and the maximum number of vehicles is 250. A diagram is presented from one selected moment (time step) of each simulation, the goal being to illustrate to the reader what the created network of intersections looks like and how the attitude of non-compliant drivers affects its traffic. The layout of the streets and the directions of vehicles follow the diagram in Figure 1. First, the network of intersections with smooth traffic is presented; for this purpose, the probability of conflict driver is 0.01. The low value of this parameter means that such drivers hardly occur; hence, collision situations on the roads are rare. The described example is shown in Figure 3.

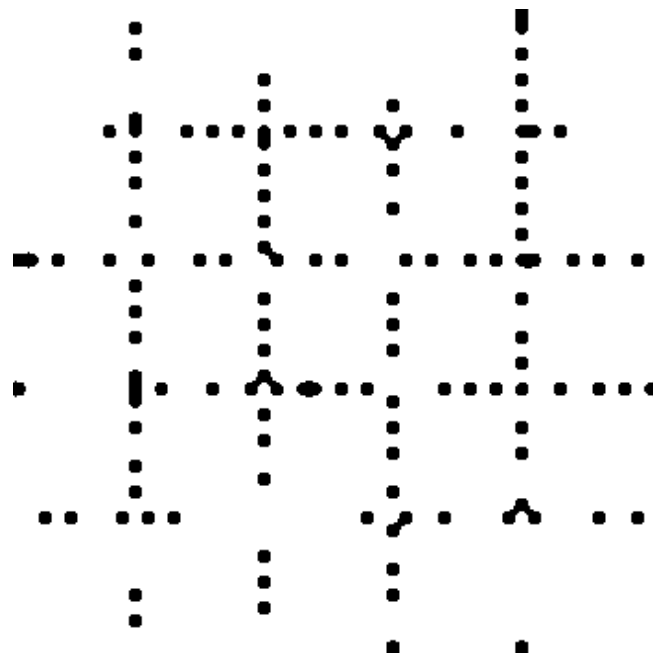
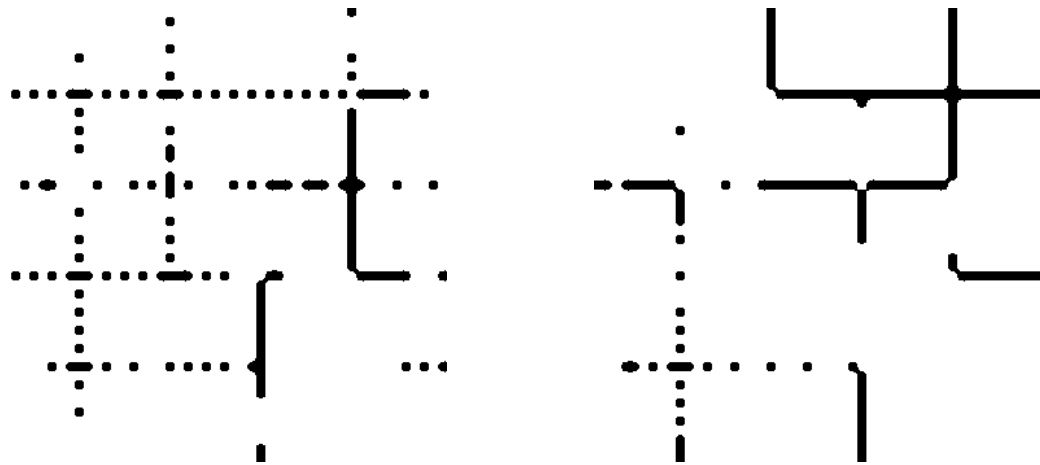


Figure 3. The analyzed intersection network in one random program step.

Another example (Figure 4a) is the situation of an increased number of non-compliant drivers. They occur with the probability of 0.25. Traffic jams are noticeable, as shown by the number of cars waiting before the intersection. The reason for such events is the meeting of two conflict drivers, which leads to collisions and blocks the intersection.

Severe traffic jams are presented in Figure 4b. The probability of a non-compliant driver is raised again to 0.75. At most intersections, these drivers meet, which causes conflicts and prevents cars from continuing to drive.

To check how the occurrence of individual types of drivers affects the efficiency of the traffic network, average car speeds were compared depending on the ratio of drivers on the road. The probability of a non-compliant driver was increased, with the fixed probability of a new car of 0.3 and a maximum number of drivers of 350. At each step, the average speed of all vehicles as well as the average speed of each type of a driver was tested. In total, 10,000 replicates were carried out for each case, finally calculating the average of the values obtained. The process was repeated while increasing the probability of a new vehicle to 0.6. The results are presented in Figure 5, where the parameter *state* indicates the probability of a new driver.



(a) The probability of occurrence of DE driver is 0.25. (b) The probability of occurrence of DE driver is 0.75.

Figure 4. Analysis intersection networks in one random program iteration for more DE drivers.

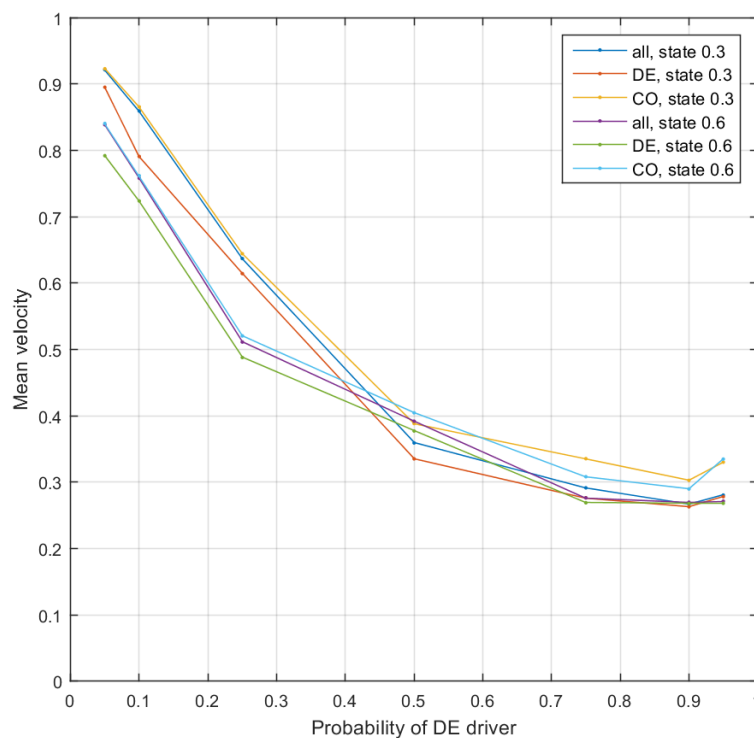


Figure 5. The average speeds of individual drivers type.

The first important conclusion is the fact that the average speeds of CO drivers—that is, those who comply with traffic rules in each case—are higher than for the other groups. It can be concluded that the movement of cooperating drivers is faster and smoother than that of DE drivers who are more exposed to greater penalties when interacting at intersections. In addition, for high load of drivers on the road, with low probability of DE drivers, the average speeds are lower, but the presence of DE drivers improves traffic.

#### 2.4. Extension of Model Interpretation

The important issue for practice is **the estimation of driver type ratio**. There are three types of meetings in the model under consideration: (CO vs. CO; CO vs. DE; and DE vs. DE). Each of these types of meetings consequently gives one of the three effects of stream modification over the main

road. Let  $\eta_{ji}$  be a random variable equal to 1 when in the  $i$ th meeting of drivers the driver on road  $j$  is **CO** and 0 if he is **DE**, and  $\xi_i = \eta_{ai} + \eta_{bi}$ . If the random variables  $\eta_{ji}$ ,  $j \in \{a, b\}$  are independent, identically distributed with  $\mathbf{P}(\eta_{ji} = 1) = p = 1 - \mathbf{P}(\eta_{ji} = 0)$ , then parameter  $p$  can be estimated by one of the methods described by Bickel and Doksum [27] or Berger [28]. Based on  $n$  meetings of drivers with  $\Sigma_{\xi} = \sum_{i=1}^n \xi_i$ , the minimax estimate is  $\hat{p}_{\minmax} = \frac{a + \Sigma_{\xi}}{b + 2n}$  (cf. [34,35]).

Two cars are approaching an intersection (or otherwise interacting due to, e.g., a change of lane). Their drivers can follow the rules of the highway code or exceed the established rules (let us not figure out how). Despite the general rules of the road, there are situations in which the driver can choose his behavior to a certain extent. Some of them are fully compliant with traffic rules, and some are risky in the sense that they interfere with other users' roads to break their rights. Sometimes the possible choices are limited by the behavior of other drivers. We can assume that this is the "determined property of the driver", but also his conscious behavior—and thus the strategy. The first interpretation leads to the recognition that all road users are divided into "road users complying with traffic rules" and "those who violate these rules" This, in turn, leads to four types of meetings. It is seen that the proper **modeling drivers strategies** is crucial in the topic under consideration.

With the second interpretation, we can speak of a decision problem. Drivers do not have a permanently assigned feature, but only consciously make one of the two decisions. The mathematical model of this situation is a two-person game with a non-zero sum with a finite action space for both players (v. [33,36] Section 7, and [19,21]). The players' payoffs in this game are measured by the impact on their movement, mainly on speed.

### 3. Model II as an Extension of the First Model

#### 3.1. Description of the Model

The second model is an extension of the model proposed in Section 2 with a constant probability of occurrence of a given type of a driver. The psychological model presenting the imitation strategy is taken into account ([20] Section 15.3.1). The goal is to illustrate how the interaction between drivers affects the attitude of drivers on the road and, as a result, on the quality of traffic. The authors, inspired by earlier works from different areas, decided to apply a psychological model, where drivers follow the "do as others" principle. As before, two types of drivers were introduced, complying with and not complying with traffic rules. Drivers adopt strategies, not because of faith or a sense of duty to comply, but because they imitate the behavior of others. In addition, a group of drivers who are not susceptible to the influence of other participants and faithfully following traffic rules is included. This group we call **core**. The driver type is updated every  $\tau$  simulation steps. After this time, the probability of imitating each strategy is calculated, informing about the chance to change the current type of a driver to another with the probability of imitating it.

Such behavior is common in everyday life. In addition, many psychological works present such a model of society learning. Driver intelligence is not included in the participants' description road traffic. Many road users try to imitate others. This assumption is reflected in the intellectually underdeveloped environments. In addition, the core driver are included. It is unreasonable that drivers change their type of behavior too often, which is why determining the frequency of meeting individual types of drivers, based on which the driver changes his/her type of behavior, is updated every  $\tau$  of simulation steps. On this basis, the imitation probability for each strategy is calculated. It informs about the probability of changing the current type of a driver to another with the probability of imitation specified for him/her. The type of driver observed is the result of his attribute and adopted strategy. It is sufficient for the purposes of this research to combine these into one parameter, although we expect interesting conclusions from the use of models based on hidden Markov chains (cf. [37,38]).

More precisely, a change of a driver type from **CO** to **DE** (the road-complying driver to non-complying driver) occurs with the probability of  $P_D$ , and in the reverse with the probability of  $P_C$ . These probabilities are described by the formula:

$$P_D = \frac{f_D}{f_C + f_D} = 1 - P_C, \quad (4)$$

In the simulation,  $f_s$  is the number of interactions of a given driver with the behavior of the opponent's type  $s$  in a given measurement cycle  $\tau$ . Traffic participants assess what driver their competitor was. The left driver, being a cooperater, cannot assess who his/her opponent is. In such situations, we add 0.5 to both  $f_C$  and  $f_D$ . In other situations, we add 1 to the appropriate counter.  $\tau$  is set to 500.

### 3.2. Simulation and Results

A simulation was carried out to check how the attitude of drivers changes in the imitation process depending on the size of the initial group of drivers who do not respect traffic rules. The effect was observed by the ratio

$$\bar{p} = \frac{\#DE}{\#CO + \#DE}. \quad (5)$$

Each simulation was carried out  $200\tau$  times, after each strategy update checking the ratio  $\bar{p}$ . Three models were included. In the first, we assumed that there was no permanent group (**core**) of drivers who comply with traffic rules and resist attempts to force them to break these rules. In the second and third models, we assumed that there was a core of resistant and law-abiding drivers of 10% and 30% in total, respectively.

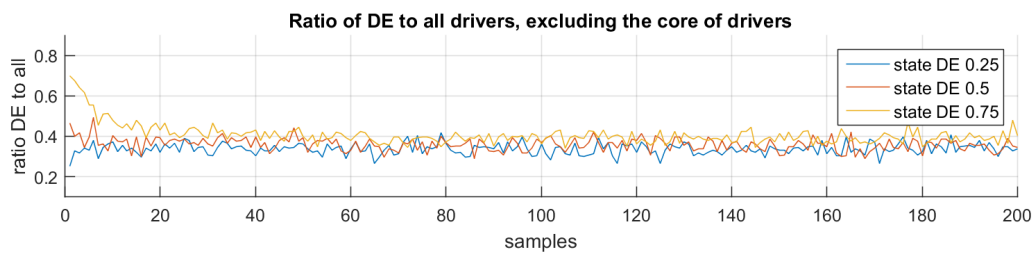
Figure 6a presents the results in the absence of drivers' core. The chart shows the ratio of **DE** drivers to all participants in situations where the initial probability of **DE** driver occurrence was 0.25, 0.5, and 0.75, respectively, as shown by different line colors. It is noticeable that the values converge and remain at a similar level. It can be stated that the system is stabilizing in terms of the distribution of individual types of drivers. A similar situation is presented in Figure 6b showing simulation results with a driver core of 10%. The system stabilizes at a lower level than before. In addition, the case with a high probability of occurrence of **DE** driver stands out more from the others. The situation after increasing the driver core to 30% is presented in Figure 6c. It is important that this time the driver attitude stabilizes more quickly than in the other cases, and the level of stabilization is even less than in the case of the core of 10%. In addition, the charts for the different initial probabilities of **DE** are more similar. This presents an important fact resulting from the above analysis: the core of drivers significantly affects the level of stabilization of number of **DE** and **CO** drivers. The greater is the core, the lower is the stabilization level for **DE** drivers, which, when combined with the results of the previous model, gives a better flow and efficiency of the movement system. Thus, to ensure better quality of traffic, the emphasis should be on generating a larger core of drivers so that as many of them as possible are resistant to the negative influence of other road users.

The results obtained in the above simulations were summarized in box-and-whisker plots, previously removing 100 initial values to ensure that the systems were in the stabilization phase. Values of different considerations of the driver core for each of the initial probabilities of **DE** drivers were compared. Figure 7 presents grouped charts for subsequent probabilities, and each of them has three box charts, presented in the following order:

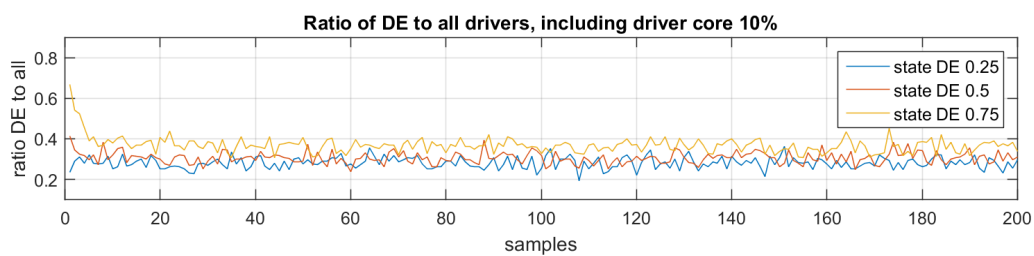
- (i) The case with a lack of the drivers' core complying with the regulations.
- (ii) The case where the drivers' core was 10%.
- (iii) The case when the drivers' core was 30%.

Presenting the results in this way confirms the earlier thesis that, with the increase of the core of drivers, the level of system stability is lower. In addition, with a larger initial ratio of **DE** drivers to the

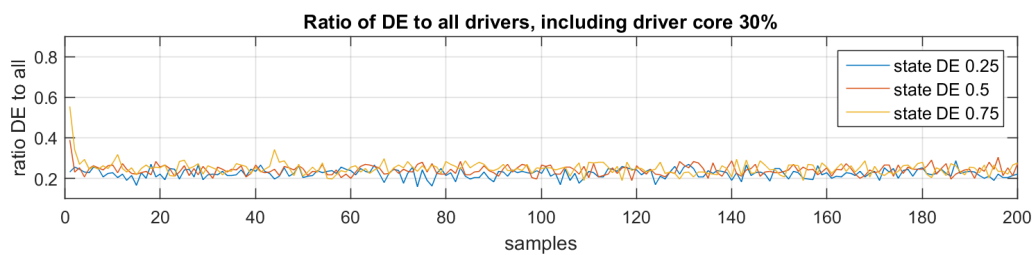
total, the size of the drivers' core has a greater impact on the final result, as seen in Box-and-Whisker 3 of Figure 7. We note that the inter-quartile range for the results obtained is similar with maximum equal to about 0.4–0.5. This confirms the fact that each of the analyzed systems is stabilized.



(a) Excluding the core of drivers who comply with traffic rules.



(b) A driver core of 10% of all drivers was included.



(c) A driver core of 30% of all drivers was included.

**Figure 6.** The ratio  $\rho$ . Different line colors correspond to the initial probabilities of DE.

The same box-and-whisker plots are compiled in a different way in Figure 8. In the previously presented three charts, this time drivers are divided by the size of the cores of prudent drivers. Each of them contains three box-plots, juxtaposed due to the initial probability of DE driver. This is a reflection of Figure 6a–c, thus the boxes successively indicate the initial probability of 0.25, 0.5, and 0.75, respectively. This confirms previous conclusions that the model with the driver's core of 10% is the least stabilized, and the difference between the level of location of the chart for DE drivers with the initial ratio of 0.75 is the largest. Hence, the model with a driver core of 30% is the best stabilized. The final ratio of DE drivers to the whole is the lowest.

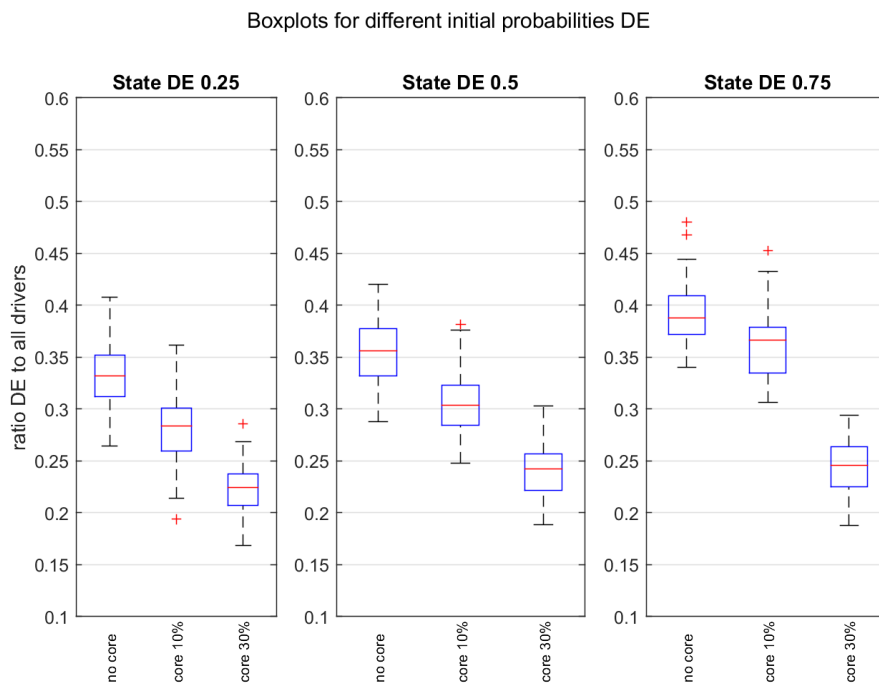


Figure 7. Box plots for the various initial probabilities of DE drivers vs. different core of CO drivers.

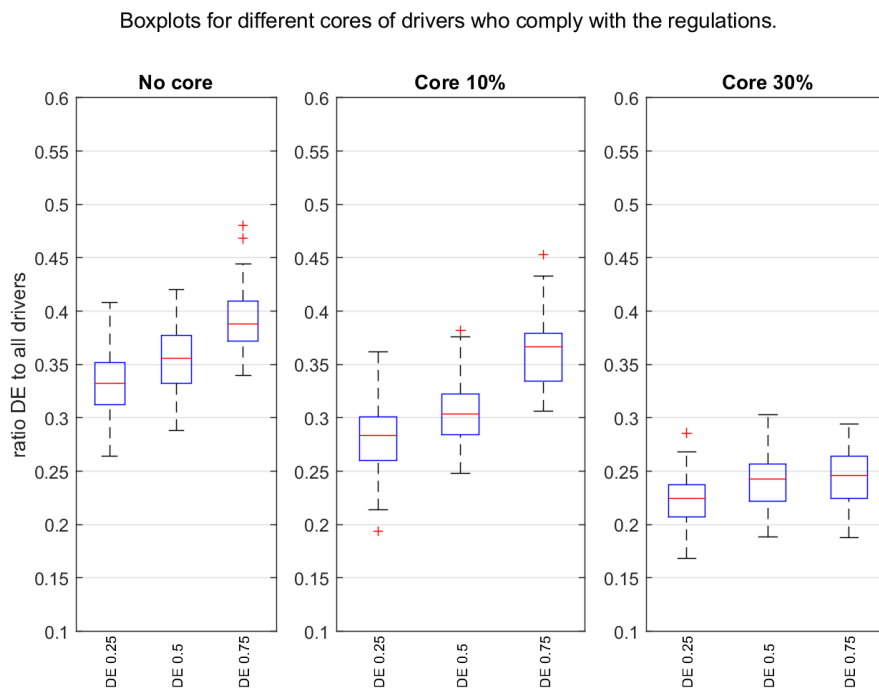


Figure 8. Box plots for various initial probabilities of DE drivers vs. the size of the CO drivers' core.

#### 4. Model III with Impatient Drivers

##### 4.1. Problem Formulation

The last model considered was proposed by Fan et al. [24]. As in other models, the authors introduced two types of drivers (complying and not complying with the regulations). An important

difference is how to generate individual types. It was assumed that at first everyone obeyed the rules of traffic, but after a certain time waiting before the intersection may cease to comply with the rules. This assumption is to reflect the actual behavior of drivers. Movement of vehicles, as in previous models, is simulated by cellular automata. The players' payouts in this case are not explicitly stated; only the strategies that drivers use in each situation are known.

#### 4.2. Generating Driver Behavior

As previously mentioned, the type of a driver depends on his/her waiting time before the intersection. Drivers, waiting before the intersection, initially comply with the rules, but, if the waiting time exceeds a certain individual value, the driver's behavior may change. This critical value is not constant and can be presented as the length of time the object was waiting to enter the intersection. It was assumed to be compatible with the Weibull distribution with the following cumulative distribution (cf. [24]):

$$F(x) = \begin{cases} 1 - \exp \left\{ - \left( \frac{x}{a} \right)^b \right\}, & \text{for } x > 0, \\ 0, & \text{otherwise,} \end{cases} \tag{6}$$

where  $a$  is the scale parameter,  $b$  is the shape parameter, and  $a$  and  $b$  are positive. The hazard rate function (on  $\mathbb{R}^+$ ) is

$$h(x) = \frac{f(x)}{1 - F(x)} = \frac{b}{a} \left( \frac{x}{a} \right)^{b-1}. \tag{7}$$

According to the proposed model, we set the scale parameter  $a = 30$  and the shape parameter  $b = 2.92$ . These values represent the likelihood of changing driver behavior. When the driver begins to wait before the intersection, his/her behavior will change with the probability depending on the value of the function  $h(x)$  for a given waiting time. After passing an intersection, the driver's behavior returns to its initial state.

#### 4.3. Driver Strategies for Prioritization

As in the previous models, four types of interaction between drivers are possible: two drivers complying with the rules, two drivers not complying with the rules, and two different drivers, with the driver complying with the rules on a subordinate road and the driver not complying with the rules on a subordinate road. The following scenarios were highlighted:

- (i) The driver who should step down complies with the rules. By following them, it gives way regardless of the type of a driver at the cross-roads.
- (ii) The driver who should give way is a driver who does not comply with the rules. He will try to impose priority, thus forcing the compliant driver to give way to him/her to ensure his/her safety.
- (iii) Both drivers are non-compliant drivers, so both can try to cross the intersection at the same time. Because of their abnormal behavior, both should stop and then the driver on the road can pass first.

#### 4.4. Simulation

The assumptions of the above model were implemented in the intersection network proposed in Figure 1. As in previous simulations, the maximum speed of cars was set at 1 to explain the costs incurred by drivers when passing the intersection. To increase the likelihood of changing the type of behavior of a driver waiting before an intersection, a driver could enter the intersection when another left it. Table 2 presents the time losses incurred by drivers while waiting before entering the intersection.

**Table 2.** Loss of time incurred by drivers during a meeting at the crossroads.

	<b>Right-h. s.</b>	<b>CO</b>	<b>DE</b>
<b>Left-h. s.</b>	CO	(2, 0)	(2, 0)
	DE	(0, 2)	(3, 1)

The left-hand side driver, when he is **CO**-type, always gives way. He waits two time steps, which is as much as his opponent needs to enter and leave the intersection. Then, if he is not moving, he can start the maneuver, and, if another opponent arrives, the situation repeats. Waiting times before the intersection of each driver are counted. Additionally, drivers whose stopping does not result directly from waiting before the intersection, but is caused by its earlier blocking, are also included. We consider cars standing in a traffic jam to those whose average of the previous five speeds is less than or equal to 0.2. Based on the received waiting times, the probability of change for each driver is determined.

Let us analyze of the effect. Simulations were carried out for different probabilities of generating a new car, which is closely related to the density of cars on the road. A simulation was carried out for each case and was repeated 75,000 times. The following statistics were determined for each case:

- (i) Average system speed
- (ii) The number of a driver type changes that have occurred at each time step
- (iii) The number of conflicts between drivers that occurred at each time step
- (iv) The attitude of DE drivers, i.e., those who changed their type to non-compliant
- (v) Average waiting times for drivers before intersections

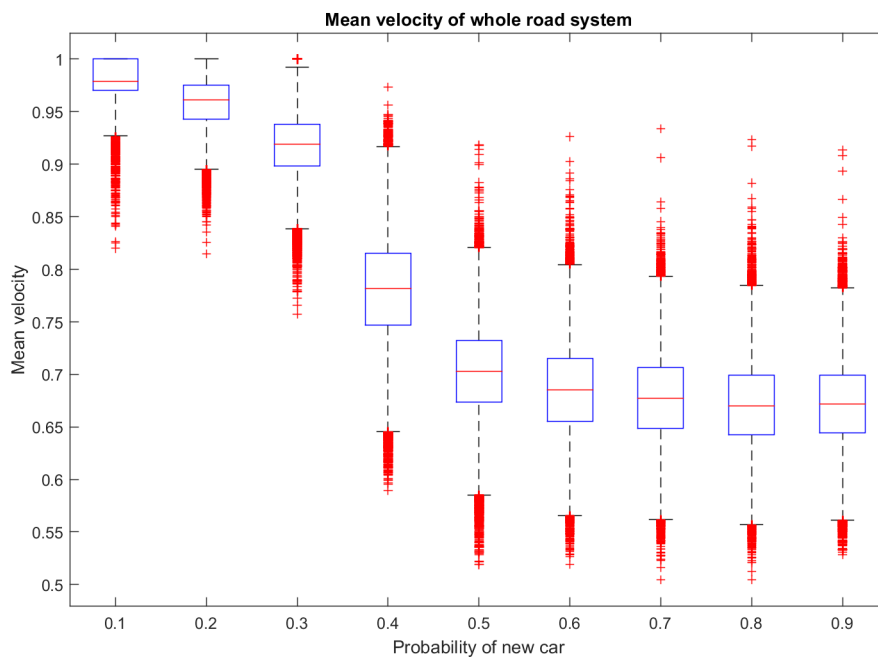
The statistics listed are summarized in Table 3. It lists the number of conflicts and the number of all driver type changes that occurred in 75,000 repetitions for each generated case. The frequency of changes and the frequency of conflicts are considered in the analyzed samples. The average ratio of DE-type drivers to other drivers shows the population of drivers who stopped complying with traffic rules, and average waiting time of drivers before the intersection.

**Table 3.** Summary of Model III results.

	0.1	0.2	0.3	0.4	0.5	0.6	0.7	0.8	0.9
Total number of driver type changes	6	66	380	7,220	16,351	19,873	21,056	22,457	23,128
Frequency of driver type changes	0.0001	0.0009	0.0051	0.0963	0.2180	0.2650	0.2807	0.2994	0.3084
The total number of conflicts	2	0	0	25	218	248	376	337	388
Frequency of conflicts	0.00002	0	0	0.0003	0.0029	0.0033	0.0050	0.0045	0.0052
Average ratio of DE drivers	0.0073	0.0001	0.0004	0.0071	0.0197	0.0262	0.0184	0.0244	0.0231
Average wait time	1.4527	1.3126	1.3759	2.4733	3.1016	3.3106	3.3708	3.4362	3.4878

The number of changes and the number of conflicts increase as the likelihood of a new driver increases. This is the result of high traffic density and traffic jams. Figure 9 presents box charts of average speeds of the entire system from the entire motion simulation. A decrease in the efficiency of the traffic system is noticeable; the sharpest decrease occurs for the probability of a new driver equal to 0.4. This may represent a point where traffic density is too high, which causes traffic jams at intersections and waiting times before intersections are too long.





**Figure 9.** Box charts of average vehicle speeds depending on the likelihood of a new car occurring.

Based on the above results, it can be concluded that, from the probability of drivers equal to 0.4, we are dealing with a high density of traffic with the efficiency of the system decreasing. Thus, the situation of too long waiting is highly likely, and drivers stop complying with traffic rules. The average waiting times in such situations are around 2.47. Comparing this result with the values of the driver probability change function feature presented in Section 4.2, it can be seen that these values are low. However, these are average values; at the same time, one of the drivers could wait much longer, and another was just starting the waiting process. In addition, the driver, already standing in a traffic jam quite far from the intersection, can change his/her type, and return to the previous state only after leaving the intersection.

## 5. Model Comparison

The above work presents three ways of modeling traffic at intersections, focusing on the difference in driver behavior. Each of them draws attention to a different problem regarding the functioning of traffic at intersections and each of them has been formulated in such a way that the obtained effects illustrate these problems and their consequences. The first presented model, which is dependent on the constant probability of receiving individual types of drivers, shows how the presence of non-compliant drivers negatively affects the quality of road traffic. It should be noted that the costs received by drivers in conflict situations are quite high; the purpose of this procedure is to draw attention to the negative effects of non-compliance with traffic rules. In fact, no collisions occur frequently. There are not so many non-compliant drivers on the roads and most road users are aware of the consequences of reckless driving.

However, the presented model makes it possible to illustrate the scale of the problem and possible effects if there were more reckless drivers. Another model, which is an extension of the previous one, draws attention to the psychological aspect of movement participants. It is assumed that drivers keep the imitation strategy, and learn from each other regardless of the costs incurred. The effects of the received simulations show that, regardless of the initial ratio of individual types of drivers, due to mutual learning, the distribution of individual categories of behavior converge to similar values. In addition, it is visible that, considering a certain group of drivers resistant to imitation strategy and always deciding to follow the law, we are able to influence the final distribution of types of behavior.

This illustrates the potential of the correct education of future drivers. The last model can be considered a model of almost perfect traffic, because the drivers are mostly those who comply with the rules. In real life, traffic participants try to comply with traffic rules; however, there are situations when the patience of drivers reaches certain limits. During a long stand at an intersection, most drivers decide to violate the rules and force priority to be able to continue driving. It is natural that with more dense traffic this happens more often. It has been detected that, above a certain degree of congestion, the traffic situation reaches certain limits of good performance. To sum up, each of the models in a different way reflects the processes occurring in the functioning of road traffic and draws attention to its different areas and problems. Therefore, conducting computer simulations allows predicting their effects.

## 6. Conclusions

The methodology of road traffic modeling connected with the drivers' behavior description is provided. The presented three-driver behavior type models are combined with the Nagel–Schreckenber models of car movements. This method of describing car movement is discussed in Section 1.3. Its link with driver types is presented in Section 2. Implementation of the models allowed their investigation based on the simulations. Maximum speeds equal to one were adopted, which was also applied in simple models. Their effects were checked on the basis of car traffic in a system consisting of eight streets arranged perpendicularly, forming a network. As was expected, various observations, qualitative and quantitative, were obtained. The applied approach allows forecasting car traffic based on knowledge of statistics of certain drivers' characteristics. To do this, you need to calibrate the model you want to use. The choice of the model depends on the possibility of obtaining information on the considered features of the driver population. Next to each of the considered models is a brief discussion on the possibilities of estimating model parameters from observing real traffic in the area under study. Thanks to this, the presented models can be used for traffic forecasting, calibration of driver behavior models, and planning traffic protection by introducing its control.

They presented a different technique of linkage the drivers' behavior during interaction with others. The conclusions received are presented in the description of each simulation and the illustrated models were also compared. The conclusions drawn from the analyzed models affect the perception of various aspects of road traffic. For example, a large number of drivers who do not comply with traffic rules significantly worsens its quality and the presence of drivers who are faithful to their own views of compliance with traffic rules is able to improve its quality. In addition, in the case of the model, when the driver's behavior changes depending on the waiting time before the intersection, a relationship has been noticed between the density of cars on the road and the desire for drivers not to comply with the rules (v. Han and Ko [39]).

**Author Contributions:** Both authors equally contributed to the conceptualization, methodology, formal analysis, investigation and writing—original draft preparation. K.W. is responsible for the simulation software development, validation, visualisation and K.J.S. is responsible for the project administration and funds acquisition. All authors have read and agreed to the published version of the manuscript.

**Funding:** This research received no external funding.

**Acknowledgments:** The research is included in the leading topics of investigation of Faculty of Pure and Applied Mathematics, Wrocław University of Science and Technology under the project 049U/0051/19.

**Conflicts of Interest:** The authors declare no conflict of interest.

## Abbreviations

The following abbreviations are used in this manuscript:

CO	<b>Regulatory drivers</b> (Cooperator)
DE	<b>Non-compliant drivers</b> (Defector)
NaSch	<b>Nagel–Schreckenberg</b>
CP, LCP	Complementarity Problem, Linear Complementarity Problem
NE( $A, B$ )	the set of Nash equilibria
$\rho$	The rate of non-compliant (jamming, difficult) drivers

## References

- Albi, G.; Bellomo, N.; Fermo, L.; Ha, S.Y.; Kim, J.; Pareschi, L.; Poyato, D.; Soler, J. Vehicular traffic, crowds, and swarms: From kinetic theory and multiscale methods to applications and research perspectives. *Math. Model. Methods Appl. Sci.* **2019**, *29*, 1901–2005. [[CrossRef](#)]
- Useche, S.; Cendales, B.; Gómez, V. Work stress, fatigue and risk behaviors at the wheel: Data to assess the association between psychosocial work factors and risky driving on Bus Rapid Transit drivers. *Data Brief* **2017**, *15*, 335–339. [[CrossRef](#)]
- Chakravarty, T.; Chowdhury, A.; Ghose, A.; Bhaumik, C.; Balamuralidhar, P. Statistical analysis of road-vehicle-driver interaction as an enabler to designing behavioural models. *J. Phys. Conf. Ser.* **2014**, *490*, 012104.10.1088/1742-6596/490/1/012104. [[CrossRef](#)]
- Greenshields, B. A study of traffic capacity. *Proc. Highw. Res. Board* **1935**, *14*, 448–477.
- Zhang, H. A theory of nonequilibrium traffic flow. *Transp. Res. Part B Methodol.* **1998**, *32*, 485–498. (98)00014-9. [[CrossRef](#)]
- Helbing, D.; Hennecke, A.; Shvetsov, V.; Treiber, M. MASTER: Macroscopic traffic simulation based on a gas-kinetic, non-local traffic model. *Transp. Res. B* **2001**, *32*, 183–211. (99)00047-8. [[CrossRef](#)]
- Liu, H.X.; Xin, W.; Adams, Z.M.; Ban, J.X. A Game Theoretical Approach for Modelling Merging and Yielding Behavior at Freeway On-Ramp Sections. In Proceedings of the Transportation and Traffic Theory 2007, London, UK, 23–25 July 2007; Taylor, M., Ed.; Elsevier: Oxford, UK, 2007; pp. 196–211.
- Kita, H.; Tanimoto, K.; Fukuyama, K. A game theoretic analysis of merging—Giveaway interaction: A joint estimation model. In *Transportation and Traffic Theory in the 21st Century*; Taylor, M., Ed.; Emerald Group Publishing Limited: Adelaide, Australia, 2002; pp. 503–518. [[CrossRef](#)]
- Yao, W.; Jia, N.; Zhong, S.; Li, L. Best response game of traffic on road network of non-signalized intersections. *Phys. A Stat. Mech. Its Appl.* **2018**, *490*, 386–401. [[CrossRef](#)]
- Ilachinski, A. *Cellular Automata; A Discrete Universe*; World Scientific Publishing Co., Inc.: River Edge, NJ, USA, 2001; p. xxxii+808. doi:10.1142/4702. [[CrossRef](#)]
- Neumann, J.V. *Theory of Self-Reproducing Automata*; Burks, A.W., Ed.; University of Illinois Press: Champaign, IL, USA, 1966.
- John von Neumann’s Cellular Automata. Embryo Project Encyclopedia (2010-06-14). 2010. Available online: <http://embryo.asu.edu/handle/10776/2009> (accessed on 23 November 2018).
- Małecki, K.; Szmajdziński, K. Simulator for microscopic traffic analysis. *Logistyka* **2013**, *3*, 8. Title of Polish org. “Symulator do mikroskopowej analizy ruchu drogowego”.
- Berto, F.; Tagliabue, J. Cellular Automata. In *The Stanford Encyclopedia of Philosophy*, Fall 2017 ed.; Zalta, E.N., Ed.; Metaphysics Research Lab, Stanford University: Stanford, CA, USA, 2017.
- Żygierewicz, J. Cellular Automata, 2019. “Automaty komórkowe”. Available online: <http://www.fuw.edu.pl/jarekz> (accessed on 8 January 2019).
- Tanimoto, J.; Kukida, S.; Hagishima, A. Social dilemma structures hidden behind traffic flow with lane changes. *J. Stat. Mech. Theory Exp.* **2014**, *2014*, P07019. [[CrossRef](#)]
- Fisk, C.S. Game theory and transportation systems modelling. *Transp. Res. Part B* **1984**, *18*, 301–313. (84)90013-4. [[CrossRef](#)]
- Ferguson, T.S. *Mathematical Statistics: A Decision Theoretic Approach*; Probability and Mathematical Statistics; Academic Press: New York, NY, USA; London, UK, 1967; Volume 1, p. xi+396.

19. Owen, G. *Game Theory*, 4th ed.; Emerald Group Publishing Limited: Bingley, UK, 2013; p. viii+451. *Thum. polskie (thum. Andrzej Wieczorek)*; PWN: Warszawa, Poland, 1975.
20. Płatkowski, T. *Introduction to Game Theory*; Warsaw University, 2012; p. 104. Wstęp do Teorii Gier. Available online: <http://mst.mimuw.edu.pl/> (accessed on 8 January 2019).
21. Mazalov, V.V. *Mathematical Game Theory and Applications*; John Wiley & Sons, Ltd.: Chichester, UK, 2014; p. xiv+414.
22. Hidas, P. Modelling Lane Changing and Merging in Microscopic Traffic Simulation. *Transp. Res. Part C* **2002**, *10*, 351–371. (02)00026-8. [[CrossRef](#)]
23. Paissan, G.; Abramson, G. Imitation dynamics in a game of traffic. *Eur. Phys. J. B* **2013**, *86*, 153. [[CrossRef](#)]
24. Fan, H.; Jia, B.; Tian, J.; Yun, L. Characteristics of traffic flow at a non-signalized intersection in the framework of game theory. *Phys. A Stat. Mech. Its Appl.* **2014**, *415*, 172–180. [[CrossRef](#)]
25. Ding, Z.; Huang, G. Real-Time Traffic Flow Statistical Analysis Based on Network-Constrained Moving Object Trajectories. In *Database and Expert Systems Applications*; Bhowmick, S.S., Küng, J., Wagner, R., Eds.; Springer: Berlin/Heidelberg, Germany, 2009; pp. 173–183. [[CrossRef](#)]
26. Bifulco, G.; Galante, F.; Pariota, L.; Spena, M.R.; Gais, P.D. Data Collection for Traffic and Drivers' Behaviour Studies: A Large-scale Survey. *Procedia-Soc. Behav. Sci.* **2014**, *111*, 721–730. Part of special issue: *Transportation: Can we do more with less resources?—16th Meeting of the Euro Working Group on Transportation—Porto 2013*. doi:10.1016/j.sbspro.2014.01.106. [[CrossRef](#)]
27. Bickel, P.J.; Doksum, K.A. *Mathematical Statistics—Basic Ideas and Selected Topics*, 2nd ed.; Texts in Statistical Science Series; CRC Press: Boca Raton, FL, USA, 2015; Volume 1, p. xxiv+556.
28. Berger, J.O. *Statistical Decision Theory: Foundations, Concepts, and Methods*; Springer Series in Statistics; Springer-Verlag: New York, NY, USA; Heidelberg, Germany, 1980; p. xv+425.
29. Federal Highway Administration. *Manual on Uniform Traffic Control Devices (MUTCD)*; Vol. Part 1, United States Department of Transportation, 2009. Available online: <https://mutcd.fhwa.dot.gov/> (accessed on 28 November 2011).
30. Nagel, K.; Schreckenberg, M. A cellular automaton model for freeway traffic. *J. De Phys. I Fr.* **1992**, *2*, 2221–2229.1992277. [[CrossRef](#)]
31. Cortés-Berruero, L.E.; Gershenson, C.; Stephens, C.R. Traffic Games: Modeling Freeway Traffic with Game Theory. *PLoS ONE* **2016**, *11*, e0165381. [[CrossRef](#)]
32. Mesterton-Gibbons, M. A game-theoretic analysis of a motorist's dilemma. *Math. Comput. Model.* **1990**, *13*, 9–14. (90)90028-L. [[CrossRef](#)]
33. Harsanyi, J.C.; Selten, R. *A General Theory of Equilibrium Selection in Games*; With a foreword by Robert Aumann; MIT Press: Cambridge, MA, USA, 1988; p. xviii+378.
34. Wald, A. *Statistical Decision Functions*; Chelsea Publishing Co.: Bronx, NY, USA, 1971; p. ix+179.
35. Steinhaus, H. The problem of estimation. *Ann. Math. Statist.* **1957**, *28*, 633–648. [[CrossRef](#)]
36. Tijs, S. *Introduction to Game Theory*; Texts and Readings in Mathematics; Hindustan Book Agency: New Delhi, India, 2003; Volume 23, p. viii+176.
37. Li, J.; He, Q.; Zhou, H.; Guan, Y.; Dai, W. Modeling Driver Behavior near Intersections in Hidden Markov Model. *Int. J. Environ. Res. Public Health* **2016**, *13*, 1265. doi:10.3390/ijerph13121265. [[CrossRef](#)]
38. Deng, C.; Wu, C.; Lyu, N.; Huang, Z. Driving style recognition method using braking characteristics based on hidden Markov model. *PLoS ONE* **2017**, *12*, e0182419.
39. Han, Y.-S.; Ko, S.-K. Analysis of a cellular automaton model for car traffic with a junction. *Theoret. Comput. Sci.* **2012**, *450*, 54–67, doi:10.1016/j.tcs.2012.04.027.

