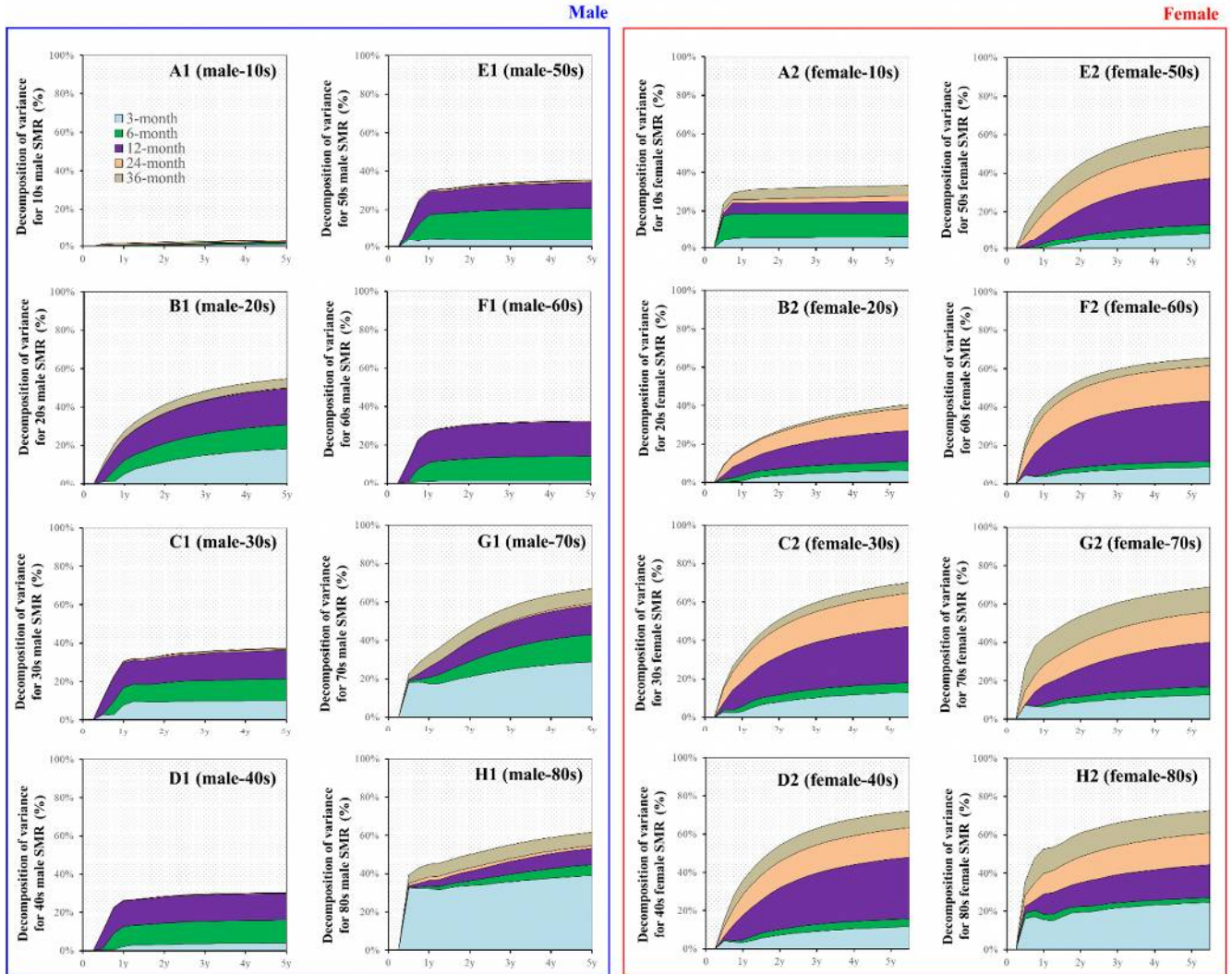
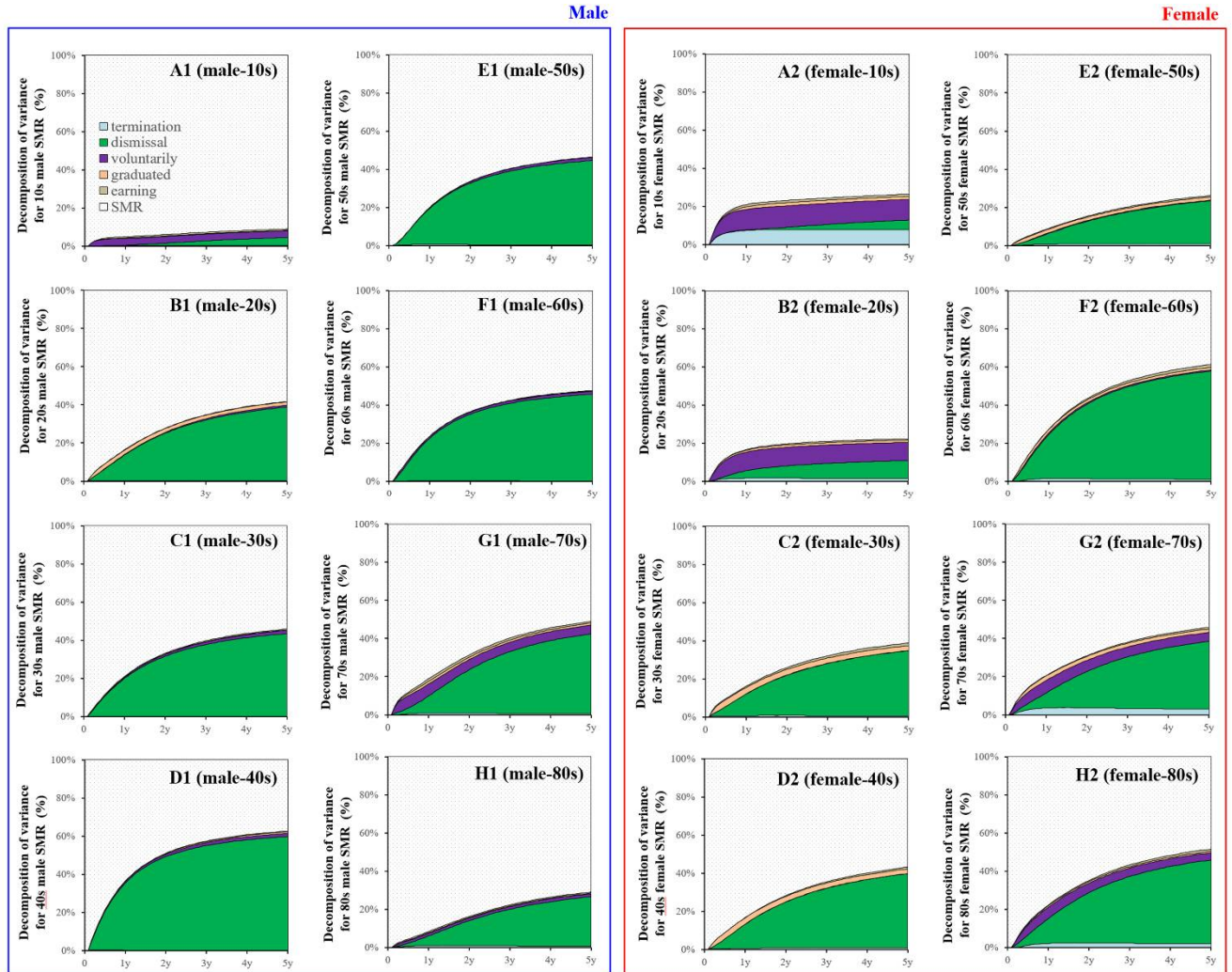


**Supplementary Figure S1: Decomposition of variances of males and females for temporal causalities from CUR disaggregated by unemployment durations to SMRPs disaggregated by gender/age analyzed using forecast variance decomposition in VAR.**



Decomposition of variances of males (A1-H1) and females (A2-H2) for temporal causalities from CUR disaggregated by unemployment durations, including 3-month, 6-month, 12-month, 24-month and 36-month to SMRs disaggregated by ages, 10s (A1-A2), 20 (B1-B2), 30s (C1-C2), 40s (D1-D2), 50s (E1-E2), 60s (F1-F2), 70s (G1-G2) and 80s (H1-H2) analysed by forecast variance decomposition in VAR. Ordinate and abscissa indicate the decomposition of variances (%) and year, respectively.

**Supplementary Figure S2: Decomposition of variances of males and females for temporal causalities from CUR disaggregated by reason for seeking job to SMPRs disaggregated by gender/age analyzed using forecast variance decomposition in VAR.**



Decomposition of variances of males (A1-H1) and females (A2-H2) for temporal causalities from CUR disaggregated by reason for seeking job, including dismissal-, voluntary-, graduated- and earning-CURs to SMRs disaggregated by ages, 10s (A1-A2), 20 (B1-B2), 30s (C1-C2), 40s (D1-D2), 50s (E1-E2), 60s (F1-F2), 70s (G1-G2) and 80s (H1-H2) analysed by forecast variance decomposition in VAR. Ordinate and abscissa indicate the decomposition of variances (%) and year, respectively.