

Figure S1. (a–d) SEM images of (Ni, Co, Cu)-LDH arrays with Cu: Co: Ni ratios of 1:1:1, 1:1:3, 1:1:4, 1:1:5.

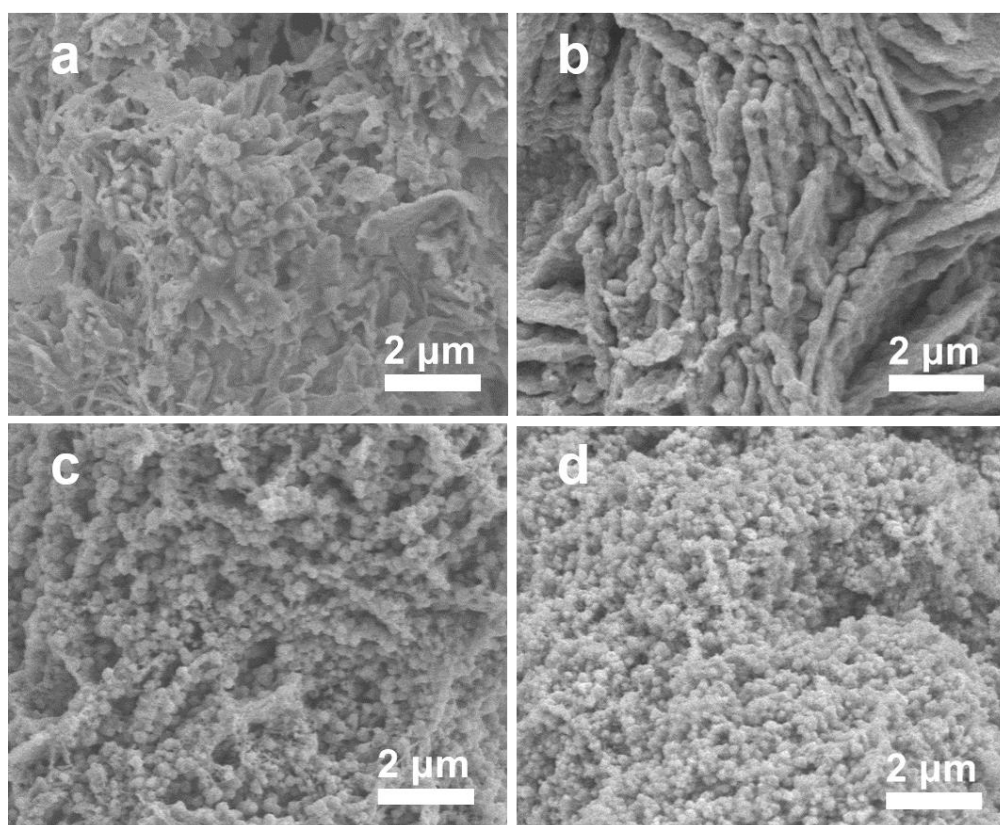


Figure S2. (a–d) SEM images of (Ni, Co, Cu)Se₂ arrays with Cu: Co: Ni ratios of 1:1:1, 1:1:3, 1:1:4, 1:1:5.

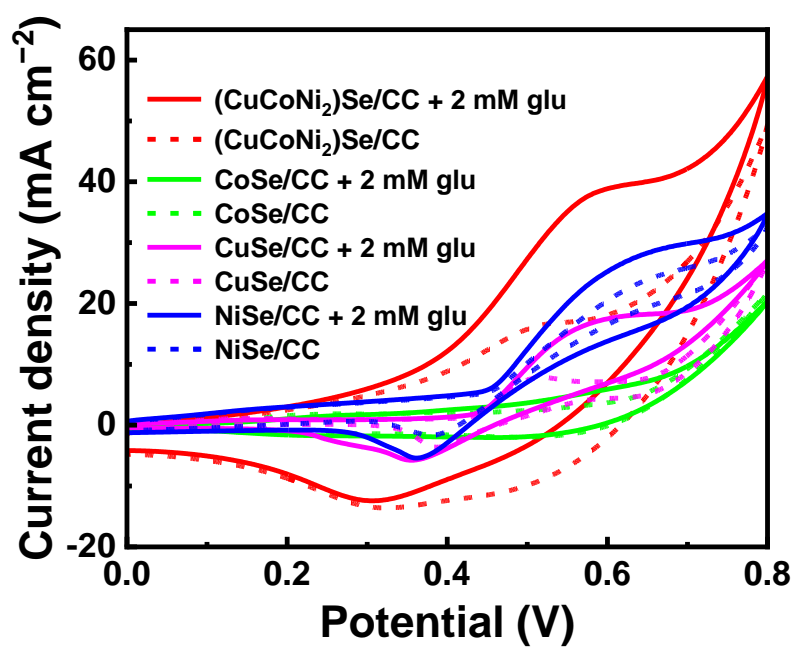


Figure S3. Response curves of (Cu, Co, Ni)Se₂/CC, CoSe/CC, CuSe/CC, NiSe/CC to add 0 mM and 2 mM glucose in 0.1 M NaOH solution.

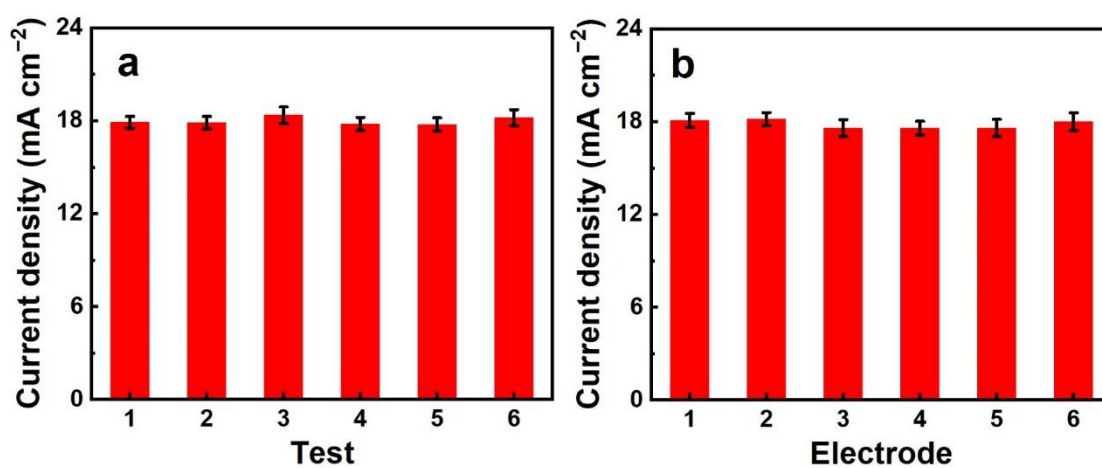


Figure S4. The repeatability (a) and reproductivity (b) of (Ni, Co, Cu)Se₂/CC electrode to glucose sensing.