

Dual-mode stretchable sensor array with integrated capacitive and mechanoluminescent sensor unit for static and dynamic strain mapping

Song Wang, Xiaohui Yi, Ye Zhang, Zhiyi Gao, Ziyin Xiang, Yuwei Wang, Yuanzhao Wu, Yiwei Liu, Jie Shang,* Run-Wei Li*

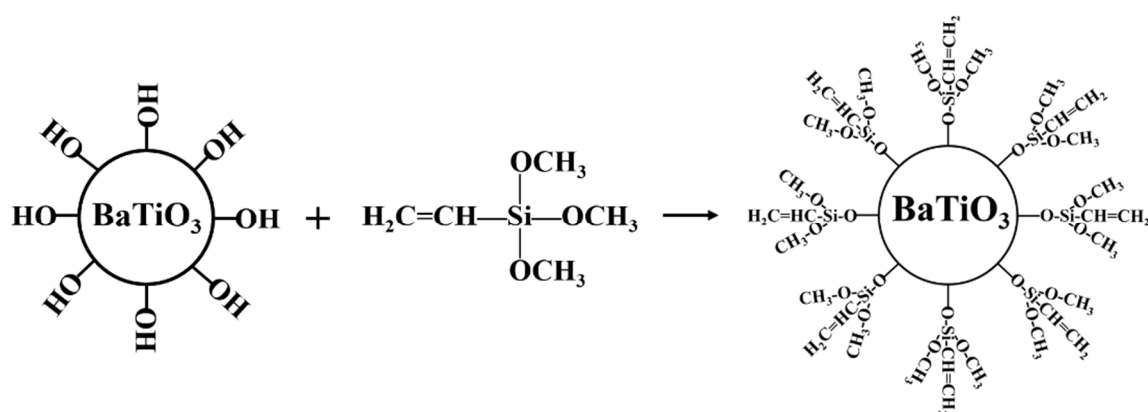


Figure S1: Surface of BaTiO₃ is branched with vinyl groups

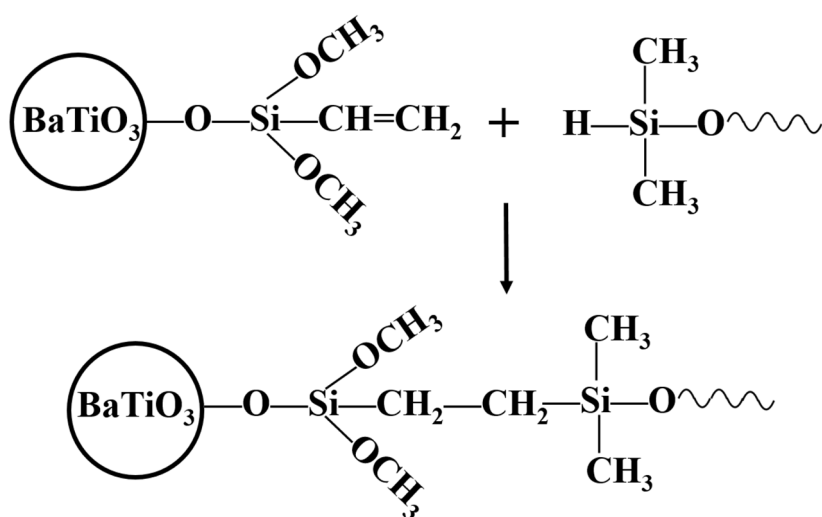


Figure S2: Chemical reaction of modified BaTiO₃ with PDMS precursor solution

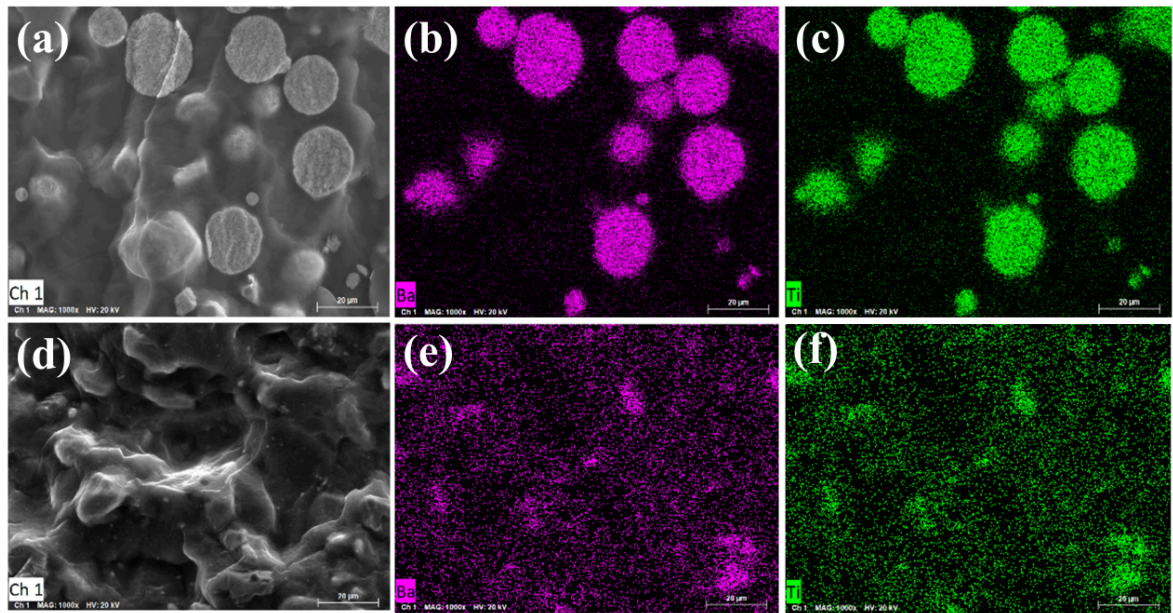


Figure S3: The SEM and EDS image of the cross-sectional of PDMS/ZnS:Cu-BT composite film. (a)(b)(c) Unmodified BT composite film; (d)(e)(f) Modified BT composite film.

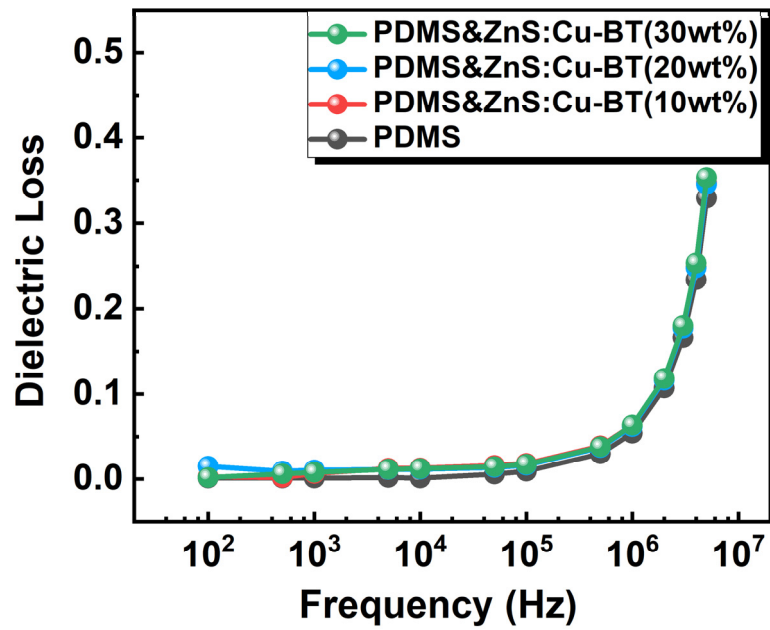


Figure S4: Dielectric loss of with different BT nanoparticles loading weight fractions

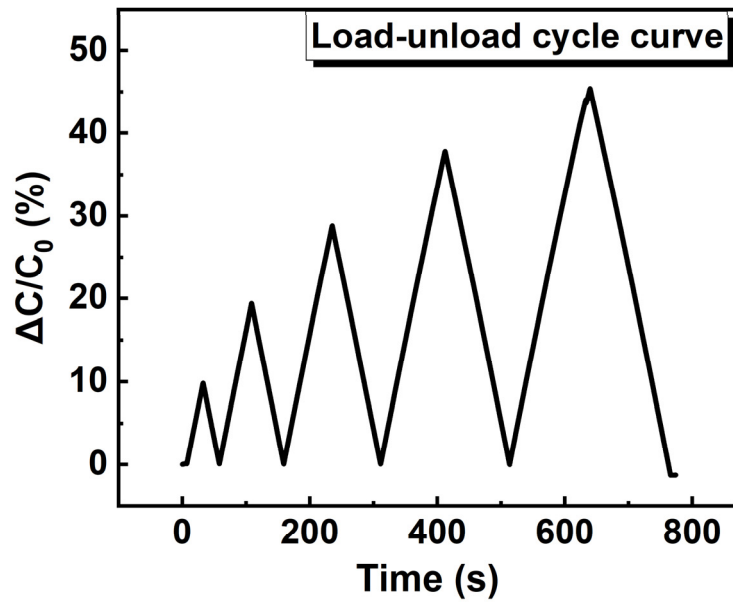


Figure S5: Load-unload cycle curve of e-skin.

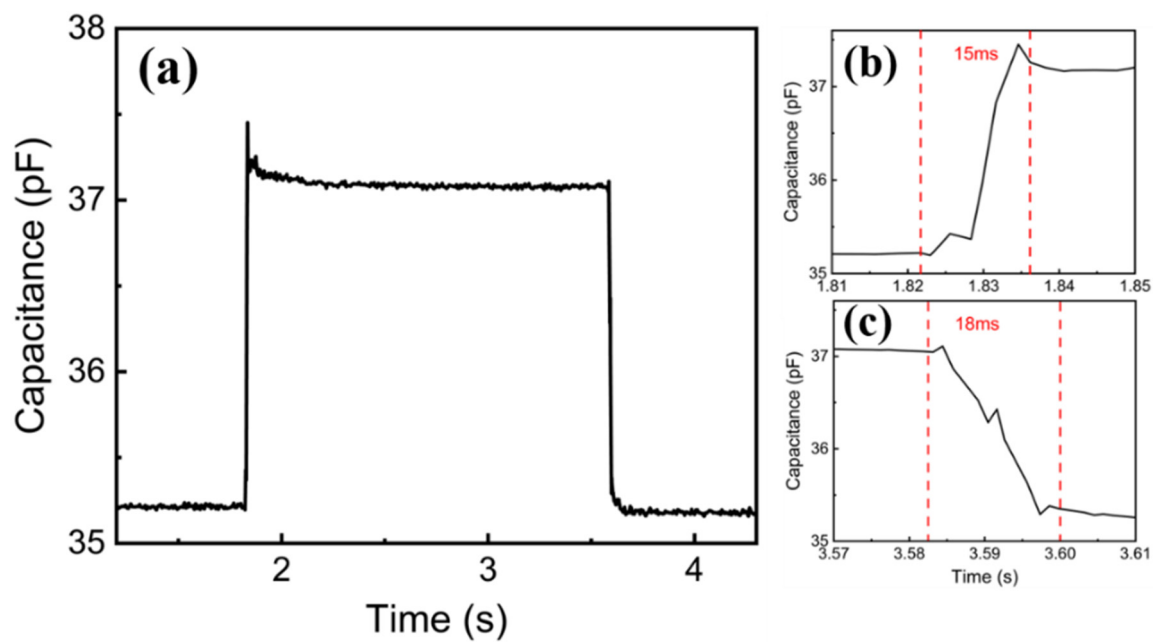


Figure S6: Response time and recovery time of capacitive strain sensor unit

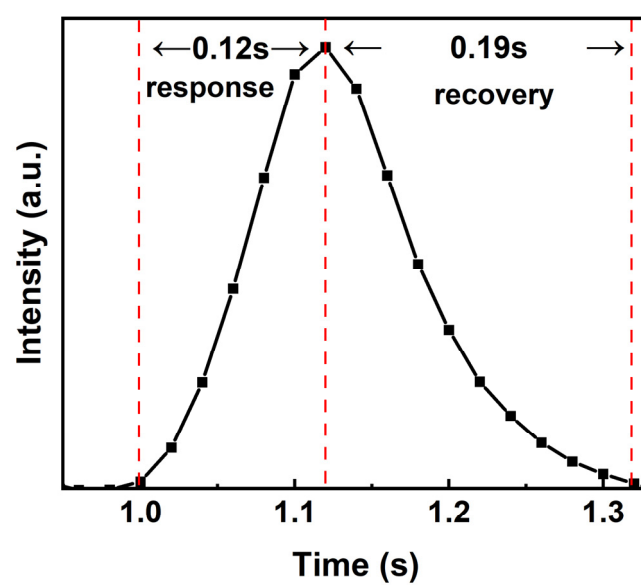


Figure S7: Response time and recovery time of ML

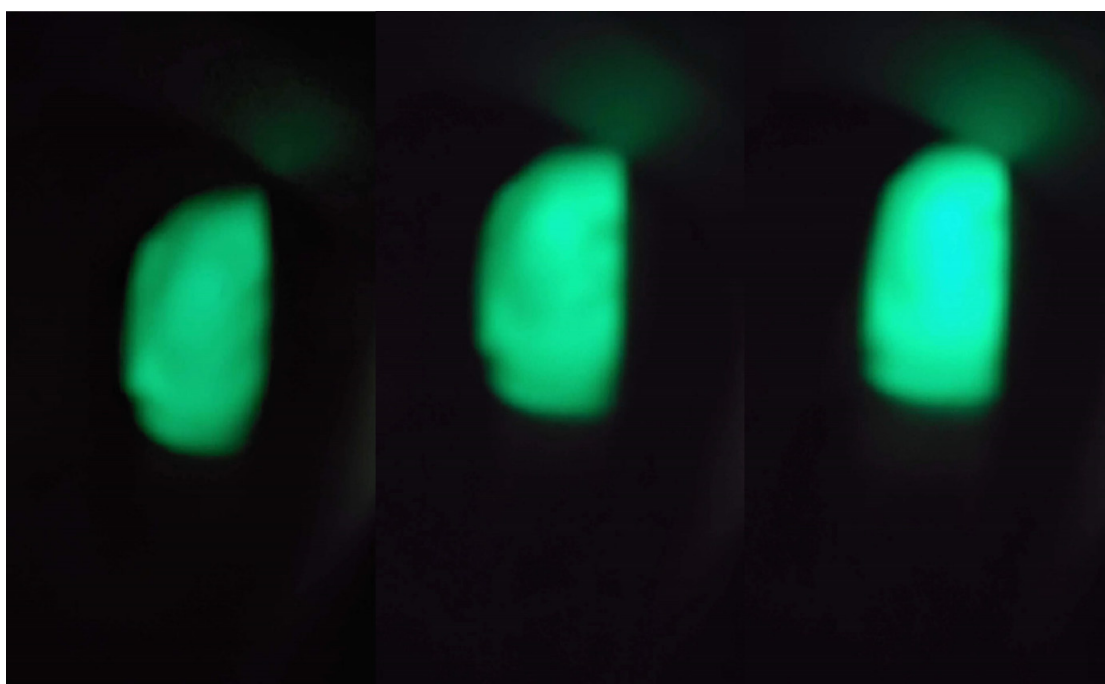


Figure S8: ML images generated by dynamic bending the finger