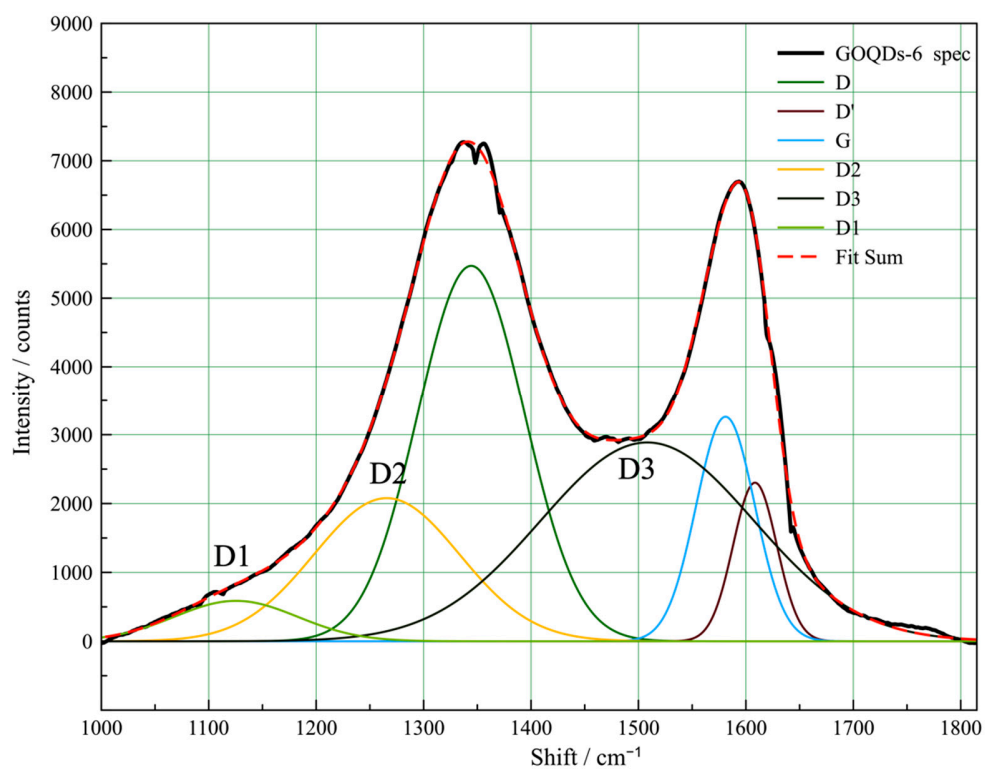
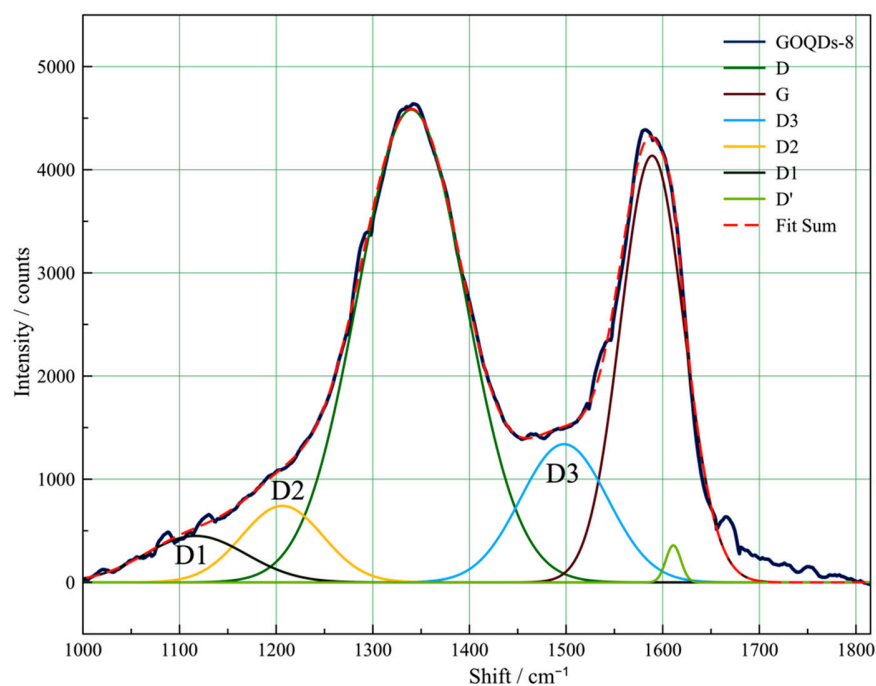


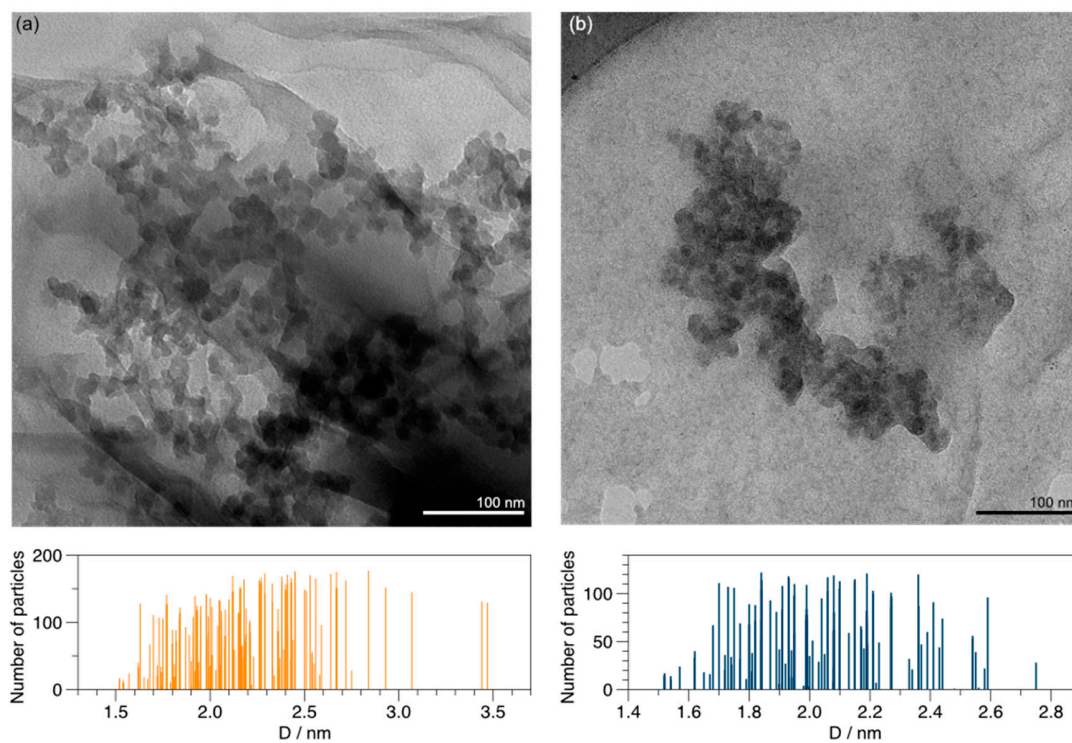
## Electrochemical Detection of Dopamine with Graphene Oxide Carbon Dots Modified Electrodes



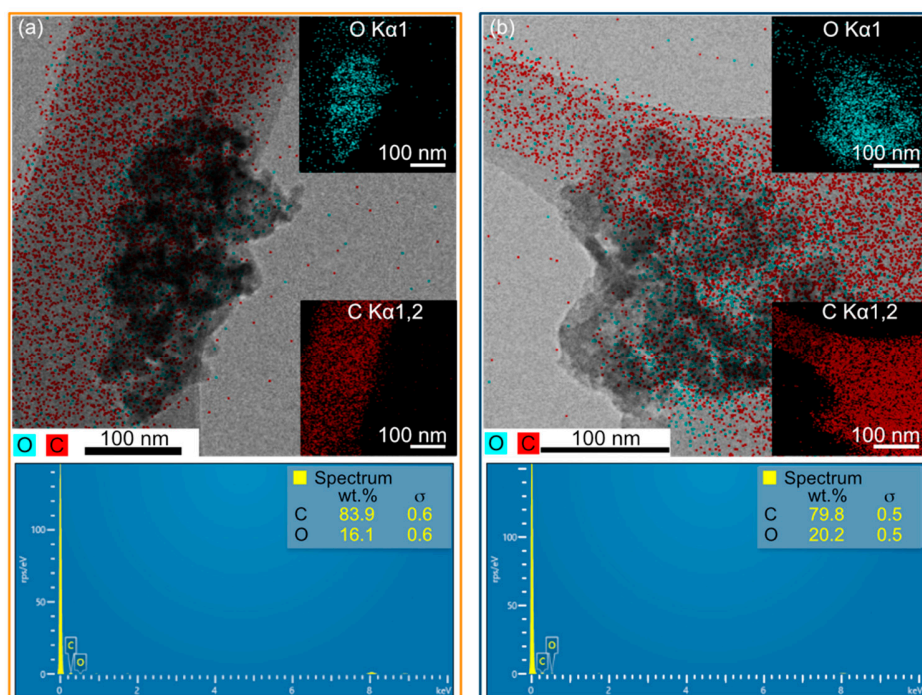
**Figure S1.** Deconvolution of D1, D2, D3 peaks for GOQDs-6. The software used is MagicPlotPro 2.9.3.



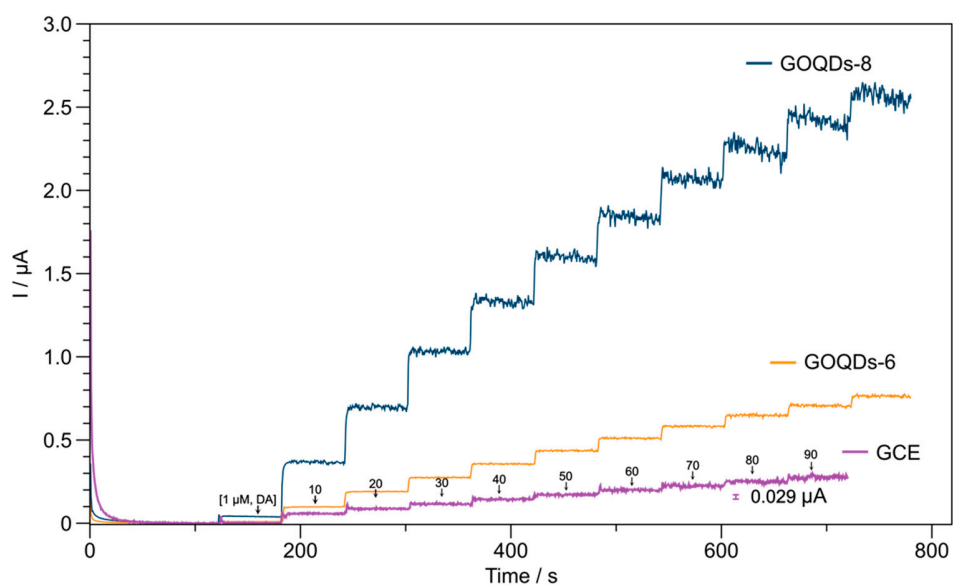
**Figure S2.** Deconvolution of D1, D2, D3 peaks for GOQDs-8. The software used is MagicPlotPro 2.9.3.



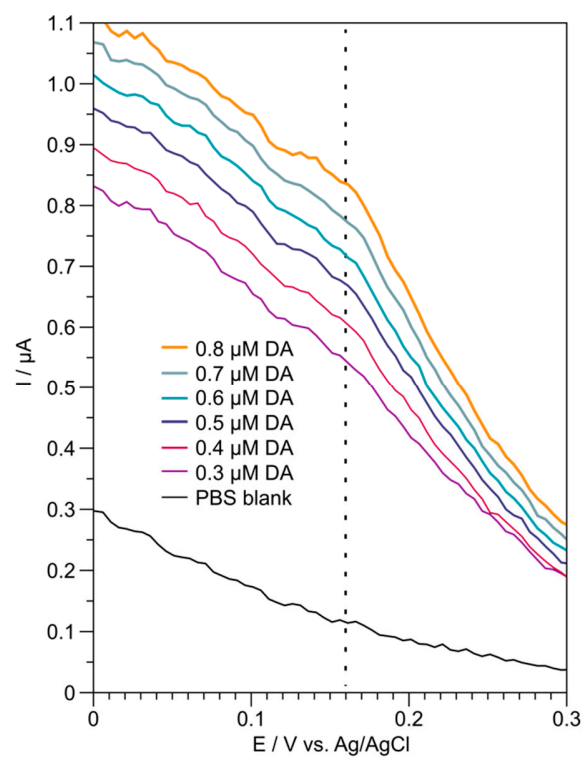
**Figure S3.** TEM images of (a) GOQDs-6 and (b) GOQDs-8.



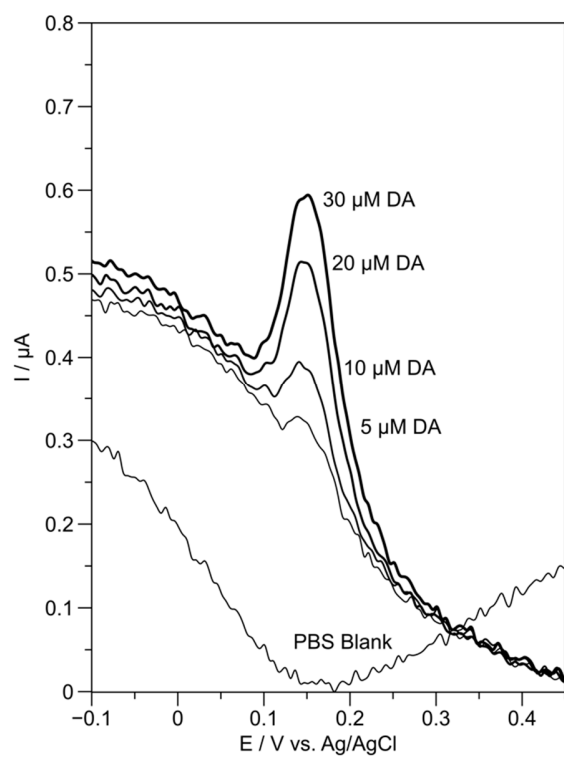
**Figure S4.** Energy Dispersive Spectroscopy mapping technique of GOQDs. (a) GOQDs-6; (b) GOQDs-8.



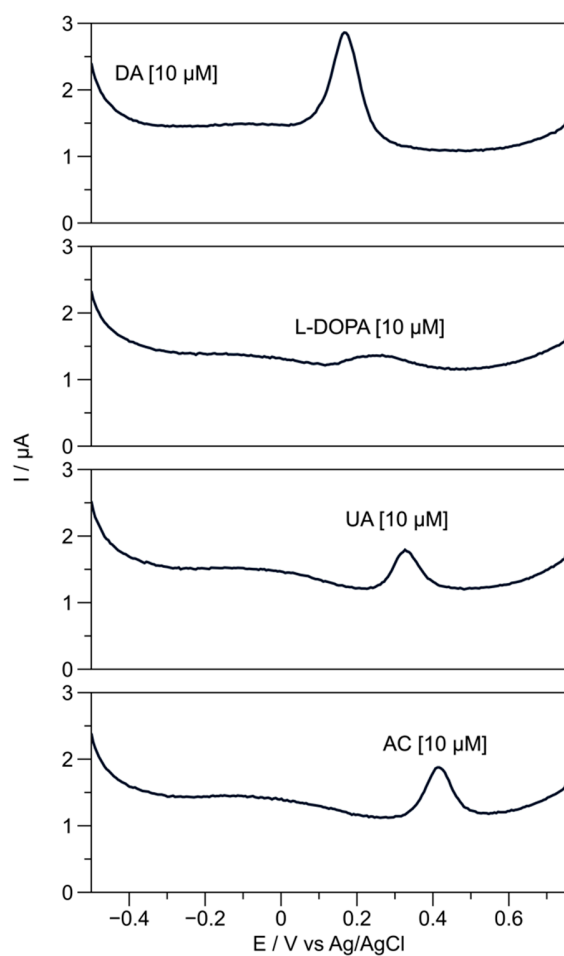
**Figure S5.** Amperometry curves for GOQDS-8/GCE, GOQDS-6/GCE and GCE from 1  $\mu\text{M}$  to 90  $\mu\text{M}$  of DA.



**Figure S6.** DPV curves for GOQDS-8/GCE from 0.3 to 0.8  $\mu\text{M}$  DA.



**Figure S7.** DPV curves for GCE from 5 to 30  $\mu M$  DA.



**Figure S8.** Selectivity of GQDS-8/GCE against uric acid (UA), acetaminophen (AC), and Levodopa (L-DOPA) interferences and its comparison with dopamine (DA) by DPV.