

One-Pot Synthesis of Copper Iodide-Polypyrrole Nanocomposites

Artem O. Konakov ^{1,2}, Nadejda N. Dremova ¹, Igor I. Khodos ³, Marcus Koch ⁴, Ekaterina V. Zolotukhina ^{1,2,5,*} and Yuliya E. Silina ^{6,*}

¹ Institute of Problems of Chemical Physics of Russian Academy of Sciences, 142432 Chernogolovka, Russia; artjom7777@gmail.com (A.O.K.); nti@icp.ac.ru (N.N.D.)

² Department, Lomonosov Moscow State University, Faculty of Fundamental Physical and Chemical Engineering, 119991 Moscow, Russia

³ Science Center in Chernogolovka, Russian Academy of Sciences, 142432 Chernogolovka, Russia; info@npenergy.ru

⁴ INM-Leibniz Institute for New Materials, Campus D2 2, 66123 Saarbrücken, Germany; Marcus.Koch@leibniz-inm.de

⁵ Moscow Institute of Physics and Technology (National Research University), 141701 Dolgoprudny, Russia

⁶ Institute for Biochemistry, Centre of Human and Molecular Biology, Campus B 2.2, University of Saarland, 66123, Saarbrücken, Germany

* Correspondence: zolek@icp.ac.ru (E.V.Z.); yuliya.silina@uni-saarland.de or yuliya.silina@gmx.de (Y.E.S.)

Citation: Konakov, A.O.; Dremova, N.N.; Khodos, I.I.; Koch, M.; Zolotukhina, E.V.; Silina, Y.E. One-Pot Synthesis of Copper Iodide-Polypyrrole Nanocomposites. *Chemosensors* **2021**, *9*, x. <https://doi.org/10.3390/chemosensors9030056>

Academic Editor: Vardan Galstyan

Received: 19 February 2021

Accepted: 10 March 2021

Published: 16 March 2021

Publisher's Note: MDPI stays neutral with regard to jurisdictional claims in published maps and institutional affiliations.



Copyright: © 2021 by the authors. Submitted for possible open access publication under the terms and conditions of the Creative Commons Attribution (CC BY) license (<http://creativecommons.org/licenses/by/4.0/>).

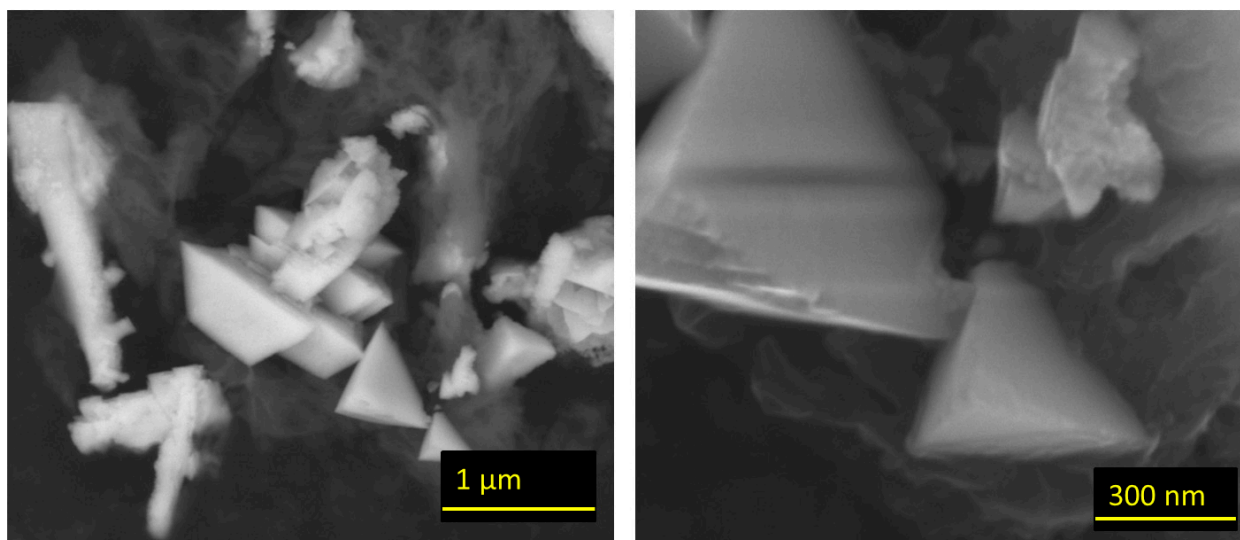


Figure S1. SEM images of the hybrid composite prepared by route 1. Note: the images show the presence of two phases.

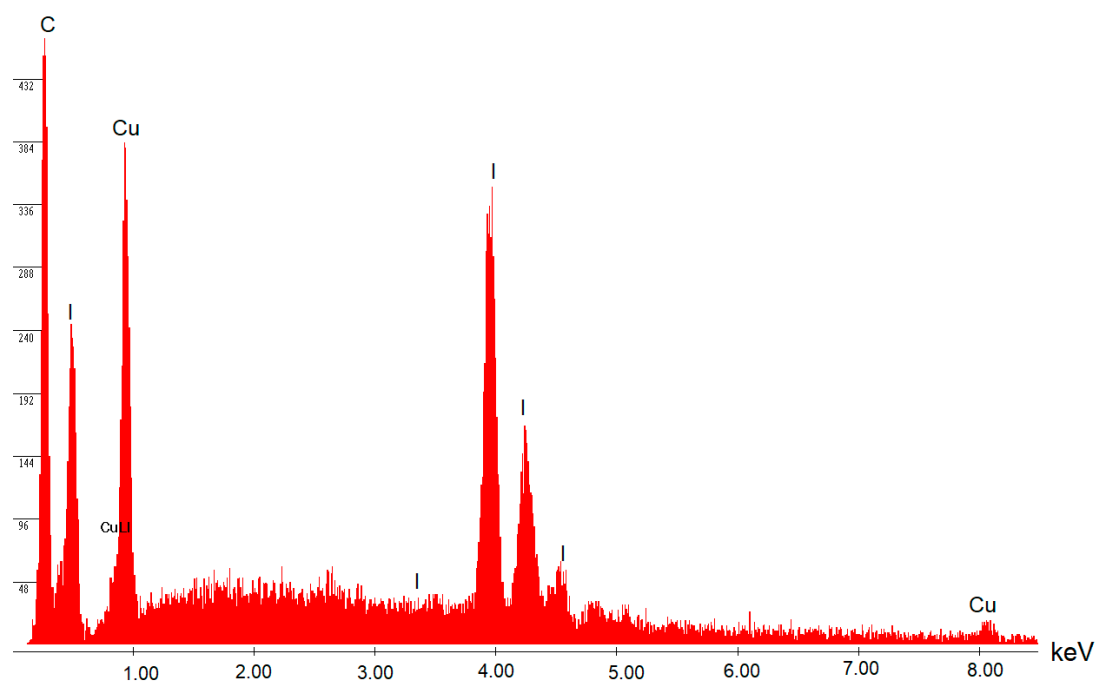


Figure S2. EDX spectra recorded from the crystals distributed within the polymer framework (sample 7).

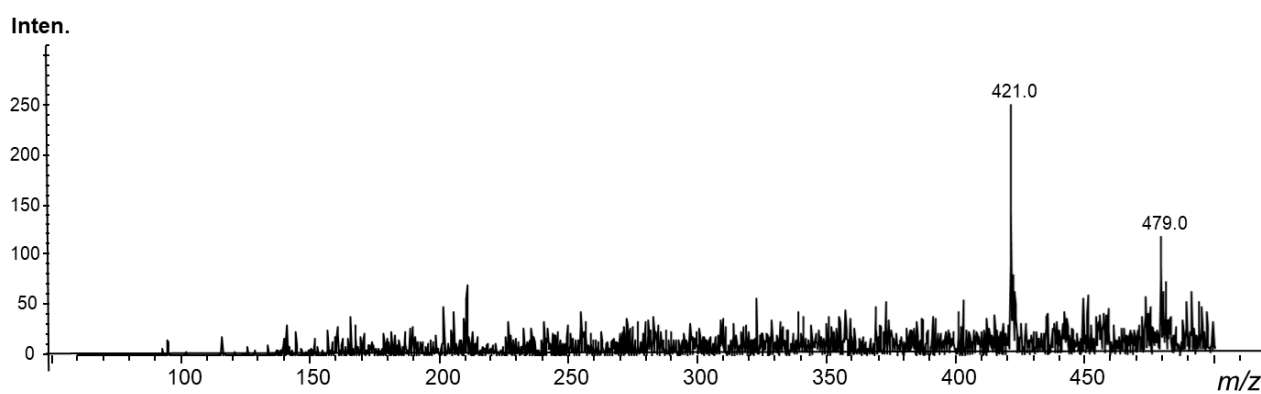
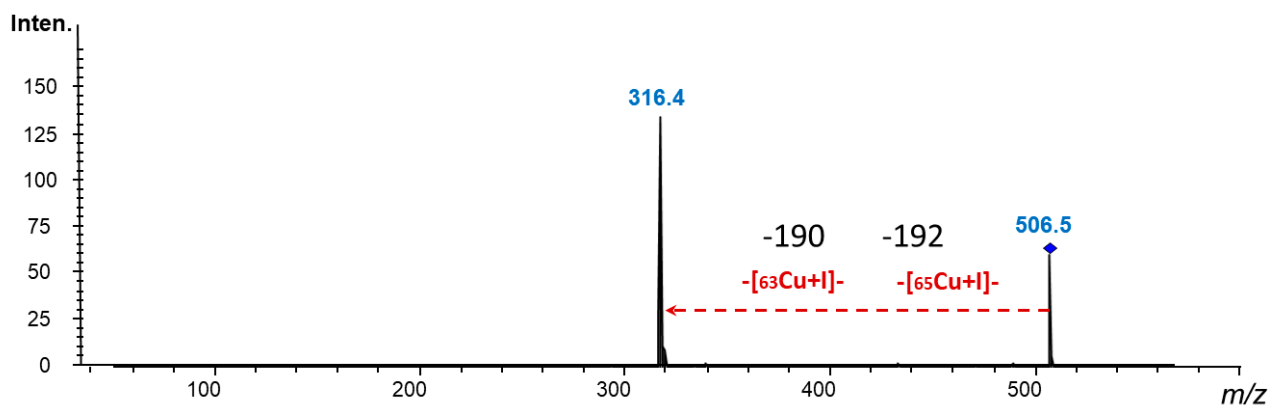
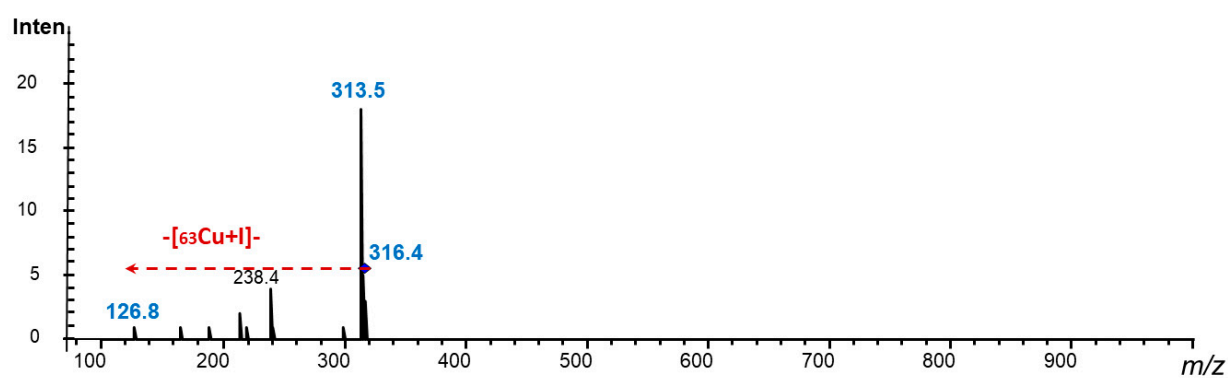


Figure 3. LDI-MS spectra recorded from the SPE/GO after spotting of Py (3 μ L), laser fluence 40%. Note: all experiments were performed in a triplicate with the same results.



(a)



(b)

Figure S4. MS² mass spectra of m/z 506.5 (a) and 316.4 (b). CID was set at 1 eV.

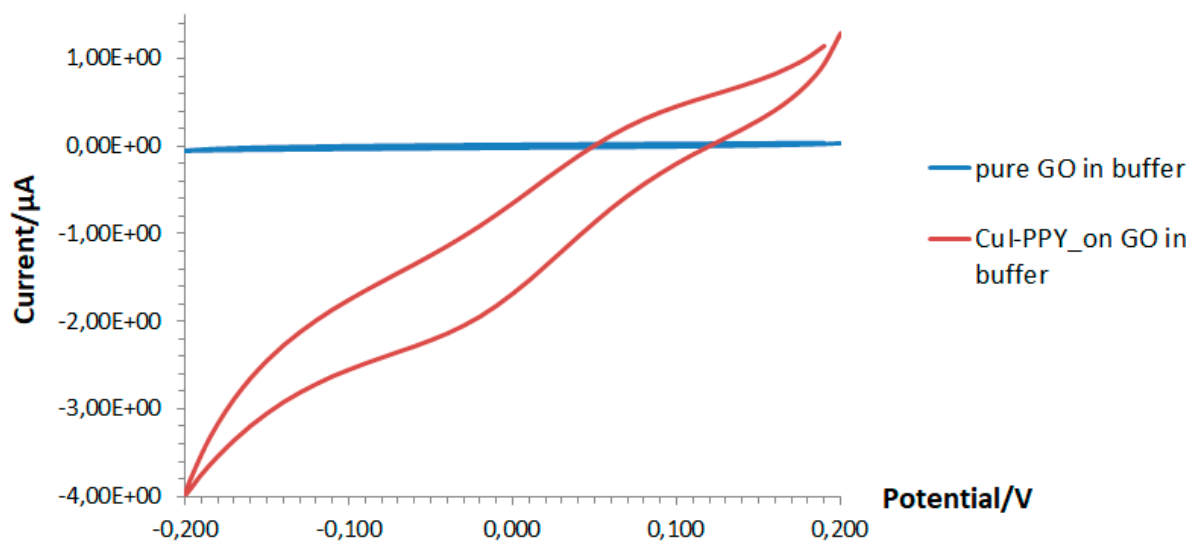


(a)

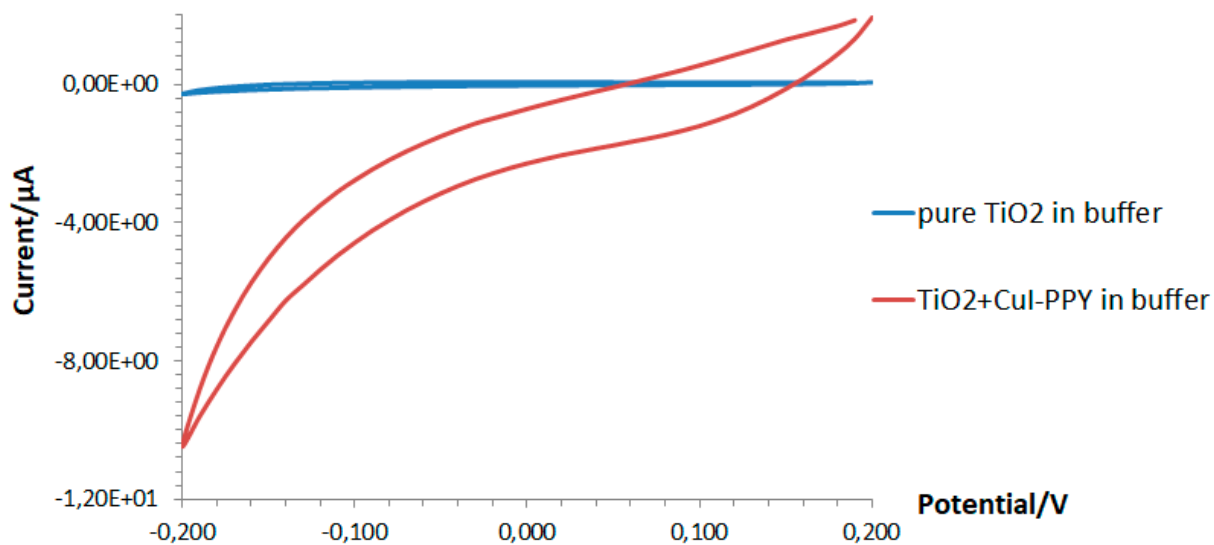


(b)

Figure S5. Macroscopic images of CuI-PPy ink (a) in initial stage (as prepared) and (b) after 8 h of storage.



(a)



(b)

Figure 6. CV curves obtained from SPE/GO (a) and SPE/TiO₂ (b) modified by 3 μL CuI-PPy (drop casting) at 20 mV/s in phosphate buffer at pH 7.