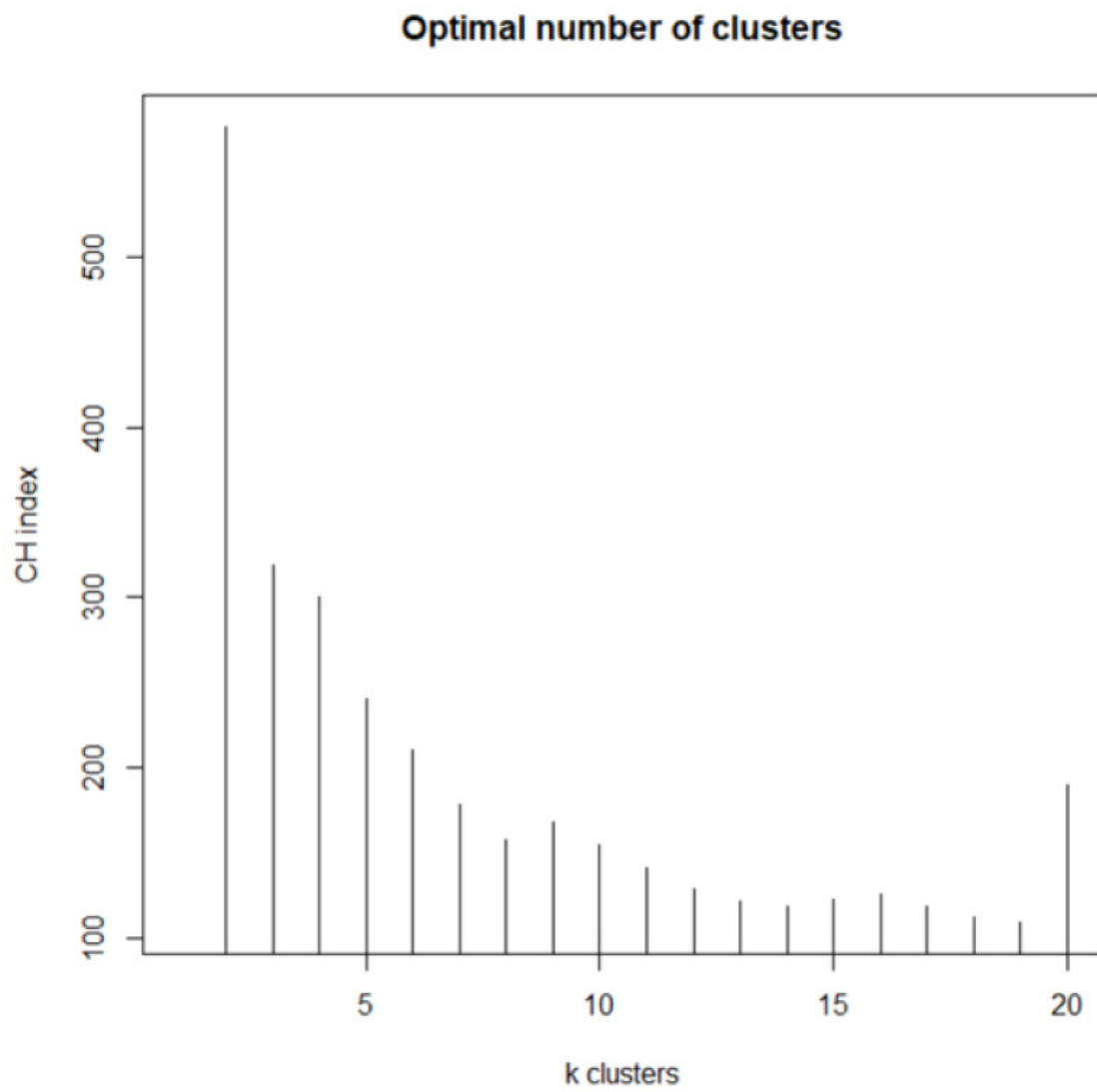


Supplementary figures
Supplementary Figures S1–S4



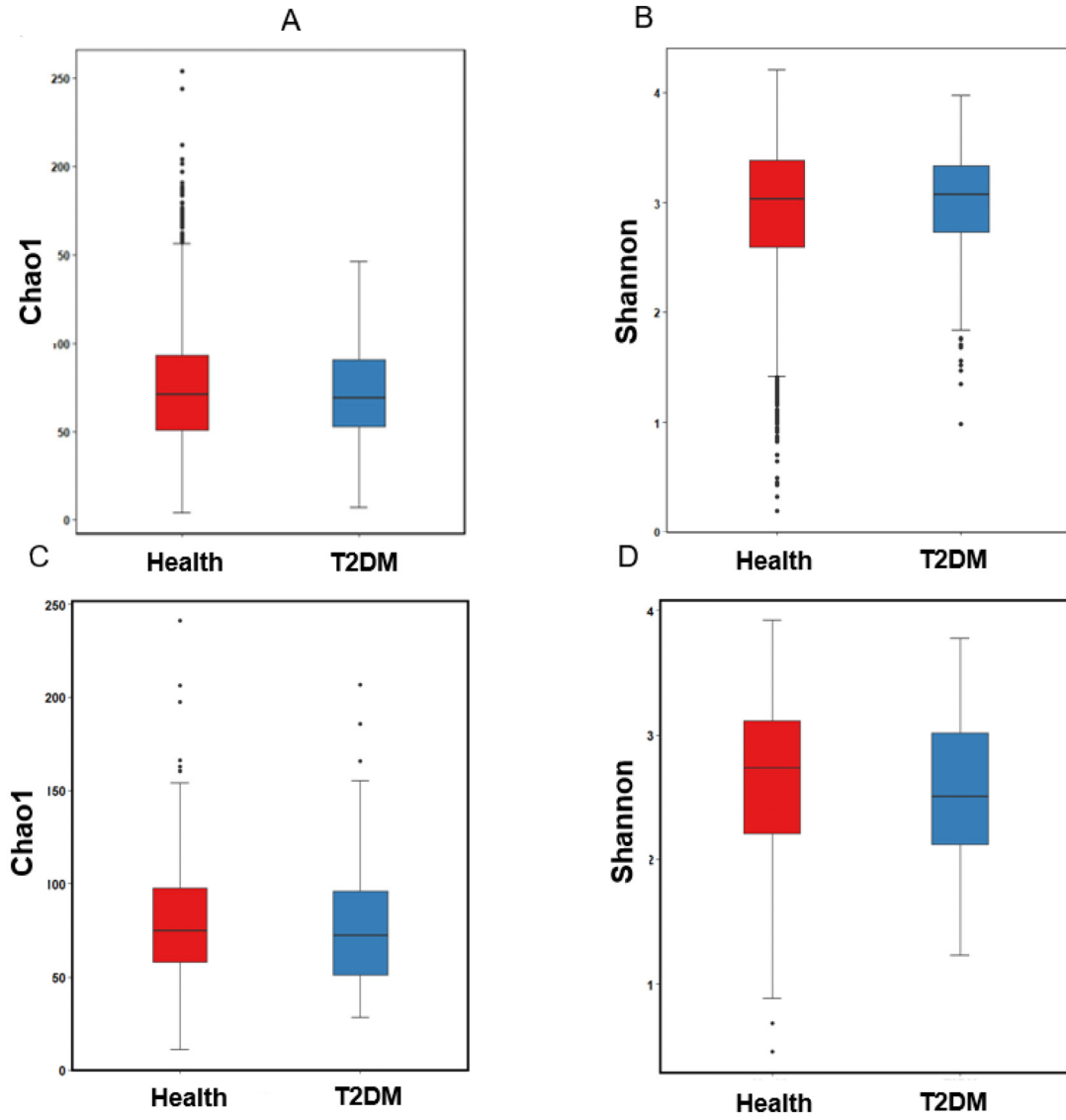


Figure S1. Chao1 and Shannon indices representing α -diversity according to enterotypes. (A).Chao1 index in ET-L. (B). Shannon index in ET-L. (C). Chao1 index in ET-P. (D). Shannon index in ET-P

ET-L: Enterotype- Lachnospiraceae; ET-P: Enterotype-Prevotellaceae

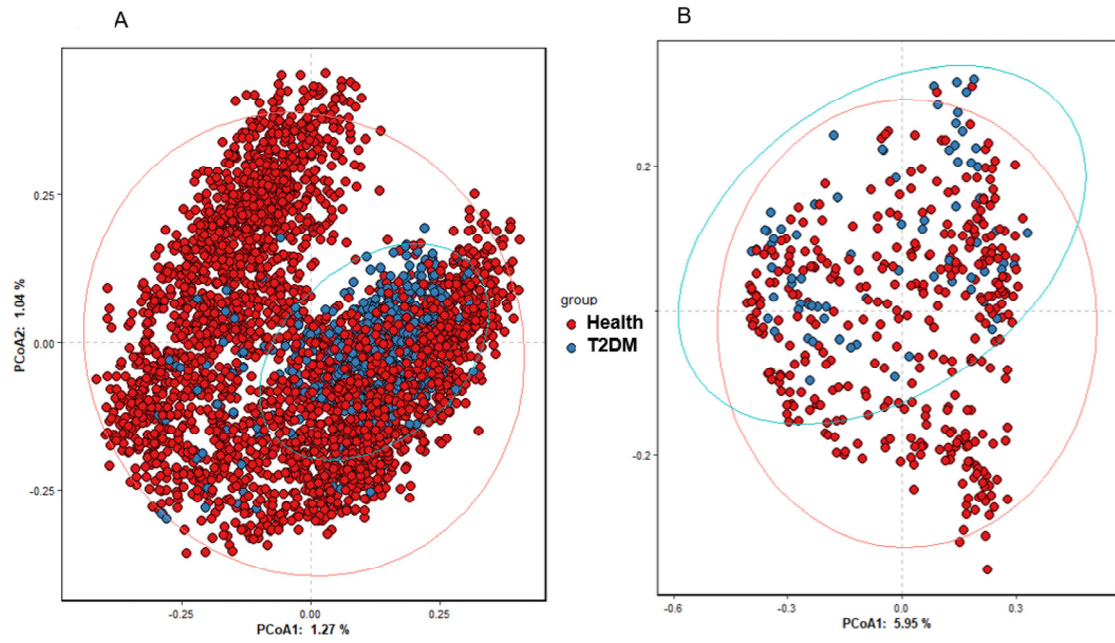
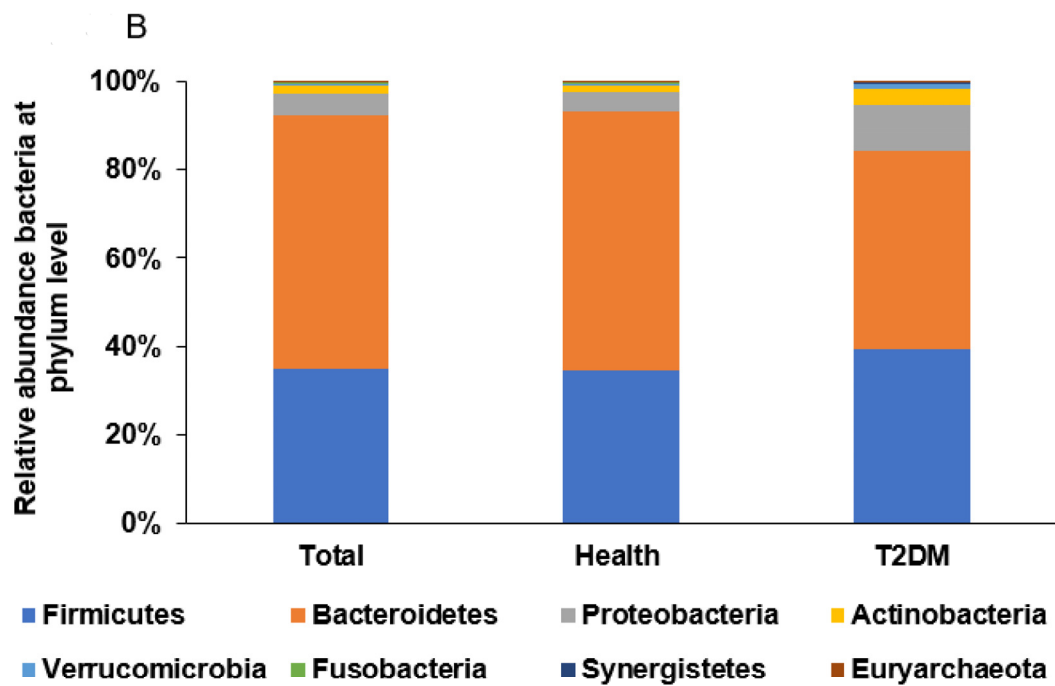
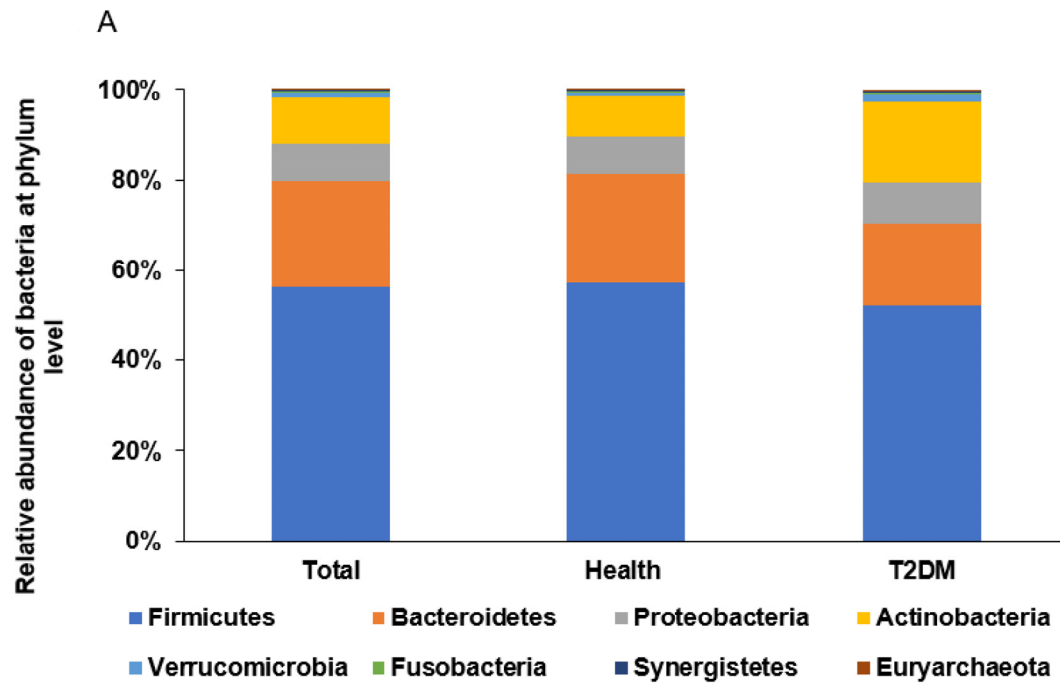


Figure S2. B-diversity according to enterotypes. (A). B-diversity in ET-L. (B). B-diversity in ET-P.

ET-L: Enterotype-Lachnospiraceae; ET-P: Enterotype-Prevotellaceae



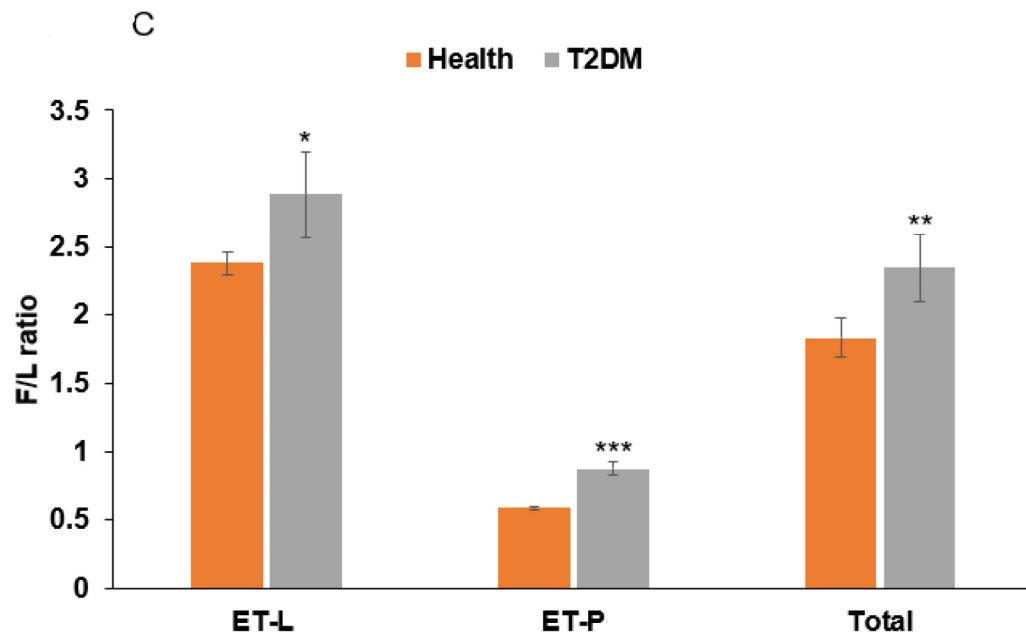
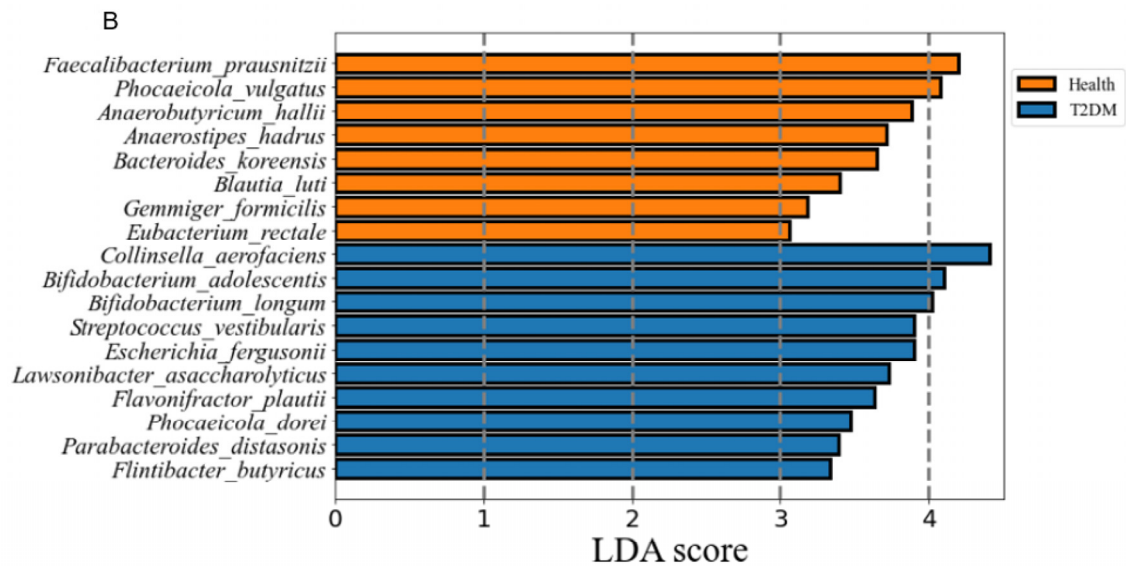
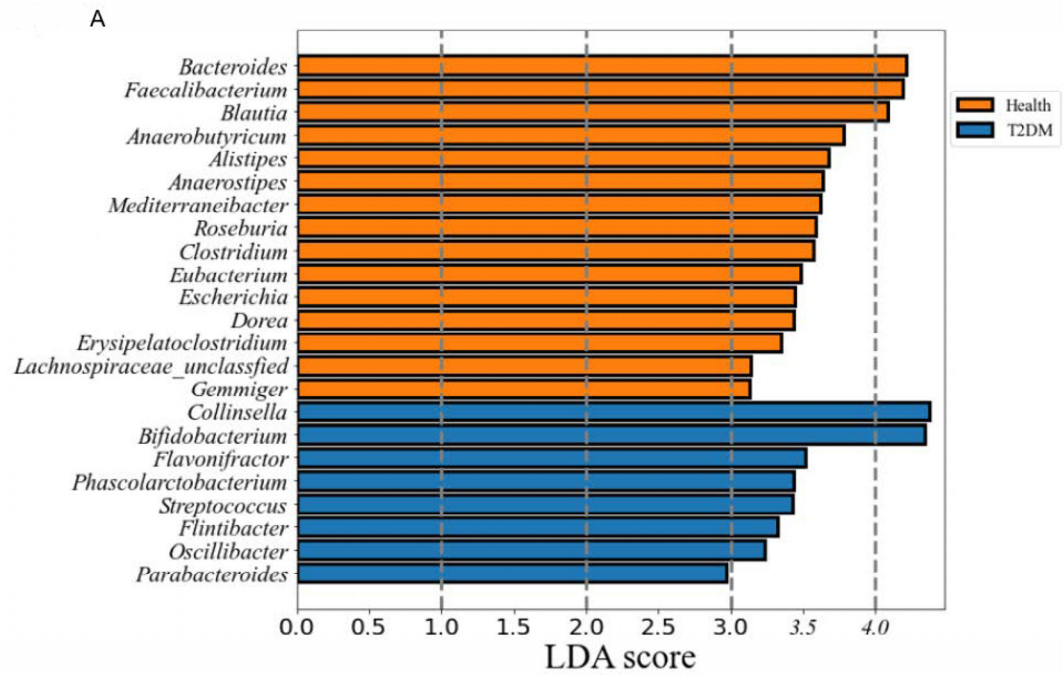


Figure S3. Relative abundance of bacteria at the Phylum level according to enterotypes. (A). ET-L. (B). ET-P. (C). The ratio of Firmicutes and Bacteroidetes (F/L). * Significantly different between T2DM and Healthy groups at $p < 0.05$, ** $p < 0.01$, and *** $p < 0.001$. ET-L: Enterotype-Lachnospiraceae; ET-P: Enterotype-Prevotellaceae



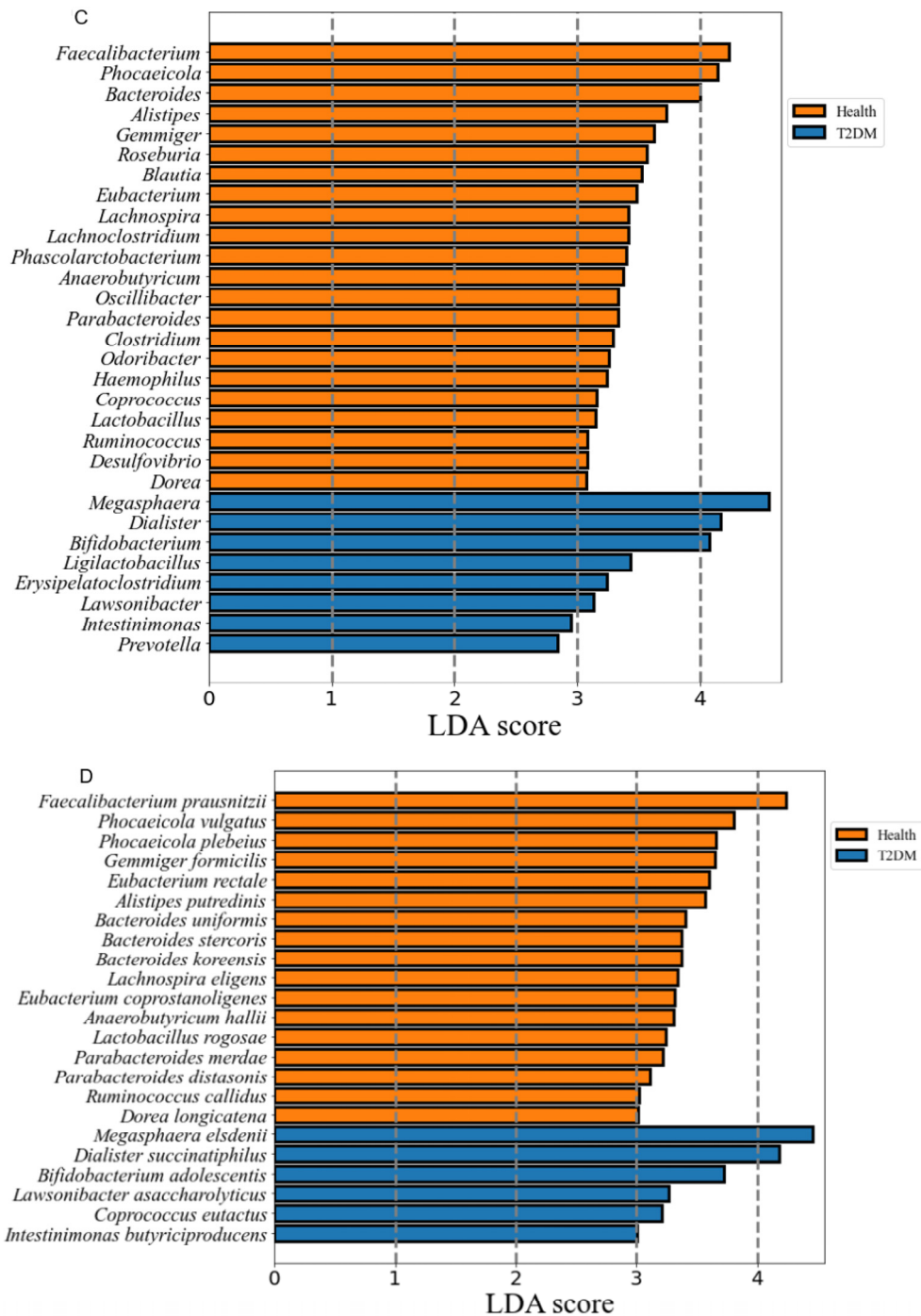


Figure S4. Primary bacteria at the genus and species between type 2 diabetes and Healthy groups by LDA analysis according to the enterotypes. (A). Linear discriminant analysis (LDA) scores of bacteria at the genus level in ET-L. (B). Linear discriminant analysis (LDA) scores of bacteria at the species level in ET-L. (C). Linear discriminant analysis (LDA) scores of bacteria at the genus level in ET-P. (D). Linear discriminant analysis (LDA) scores of bacteria at the species level in ET-P.

ET-L: Enterotype-Lachnospiraceae; ET-P: Enterotype-Prevotellaceae