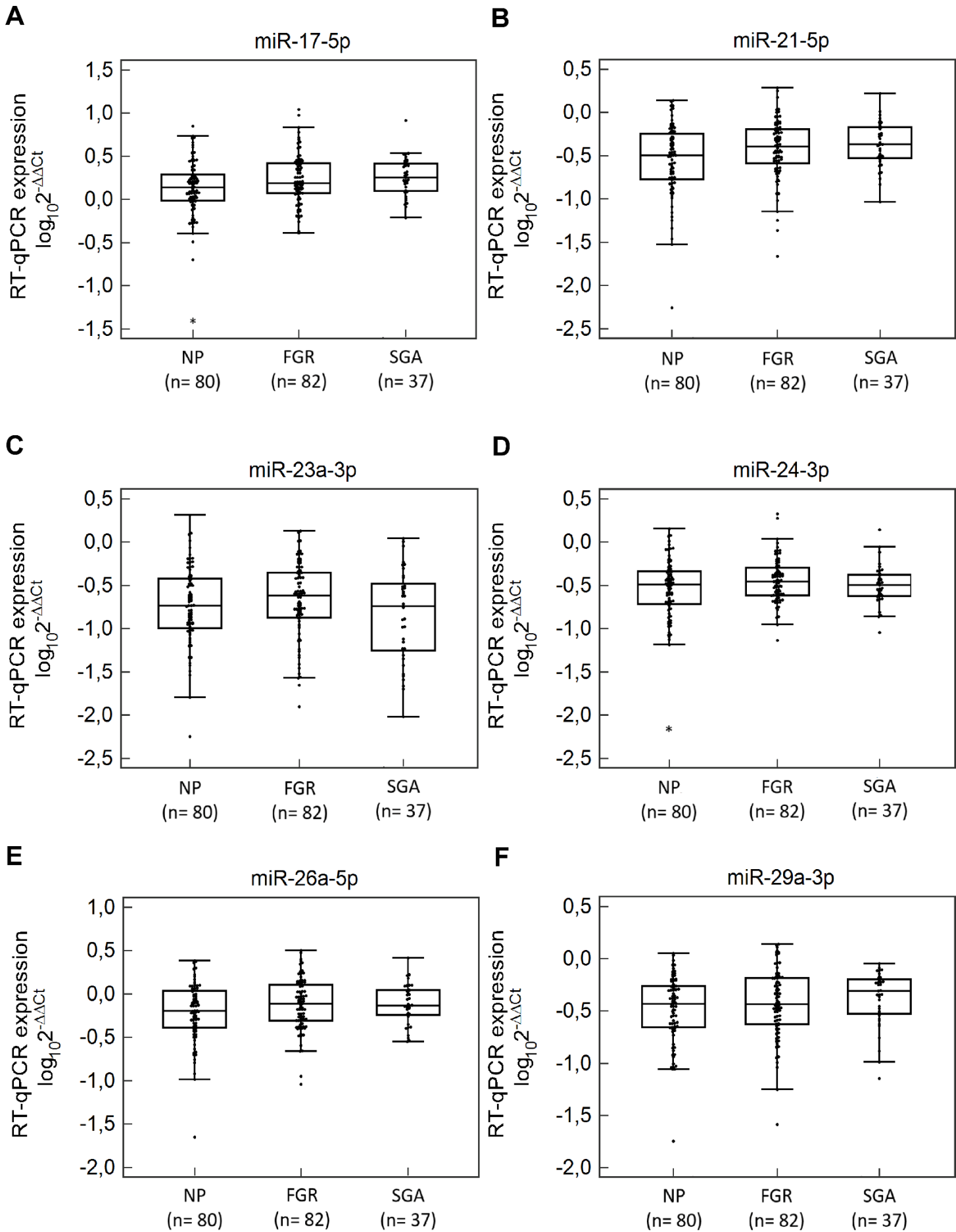
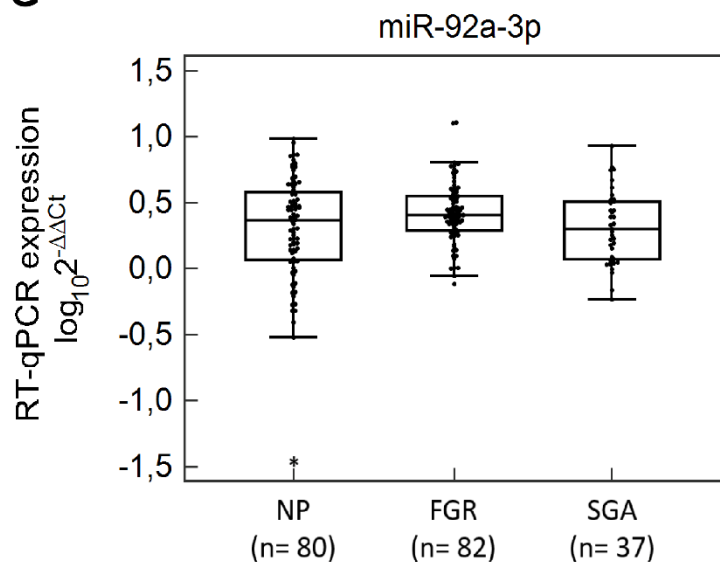
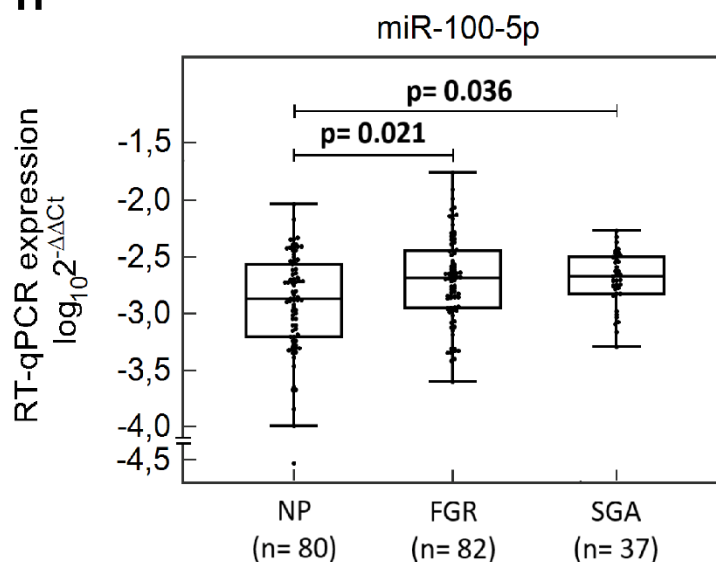
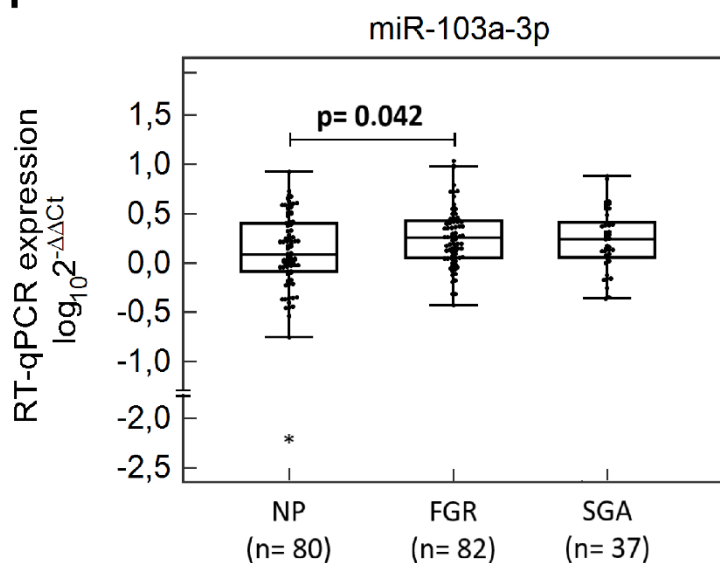
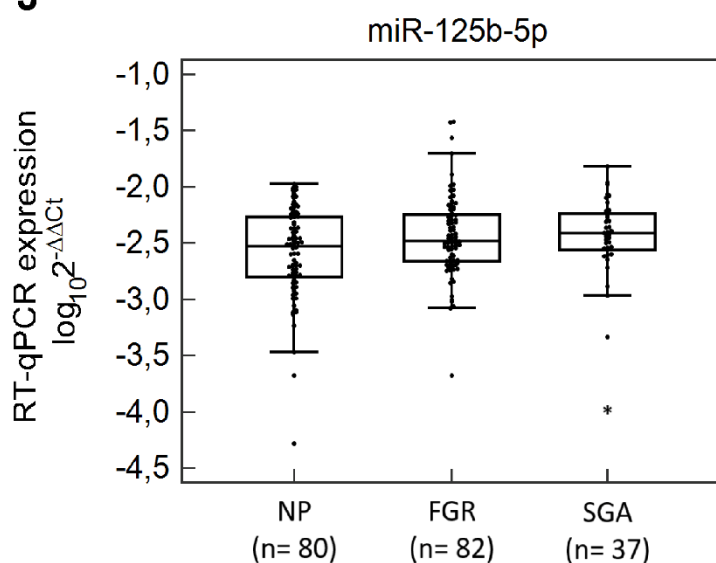
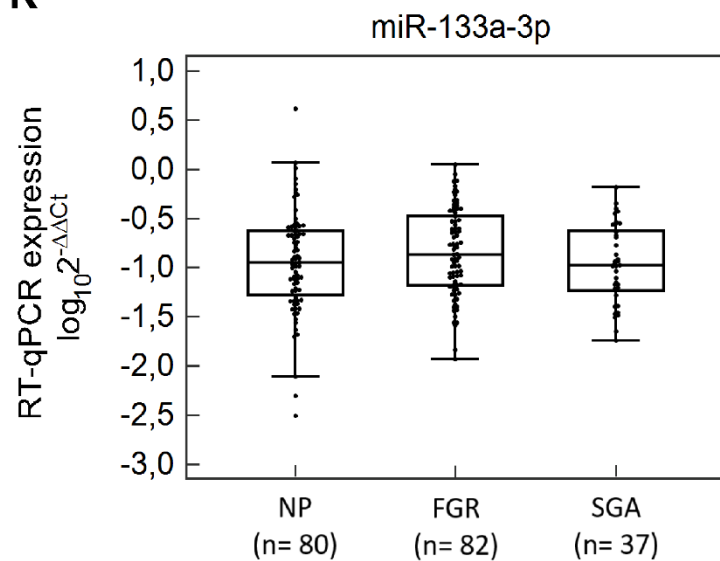
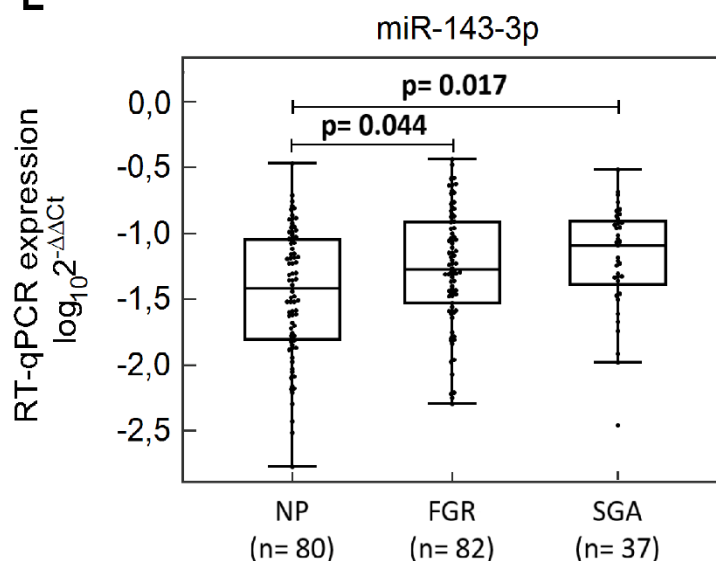


Supplementary Figure S2.



G**H****I****J****K****L**

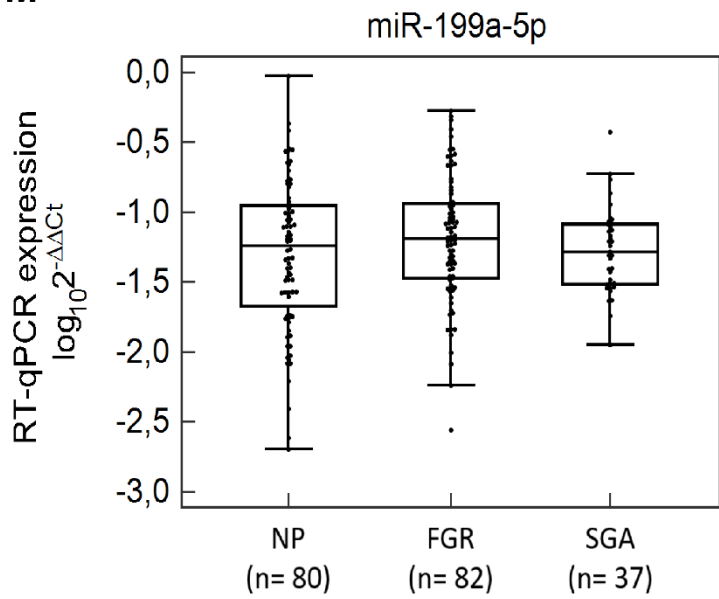
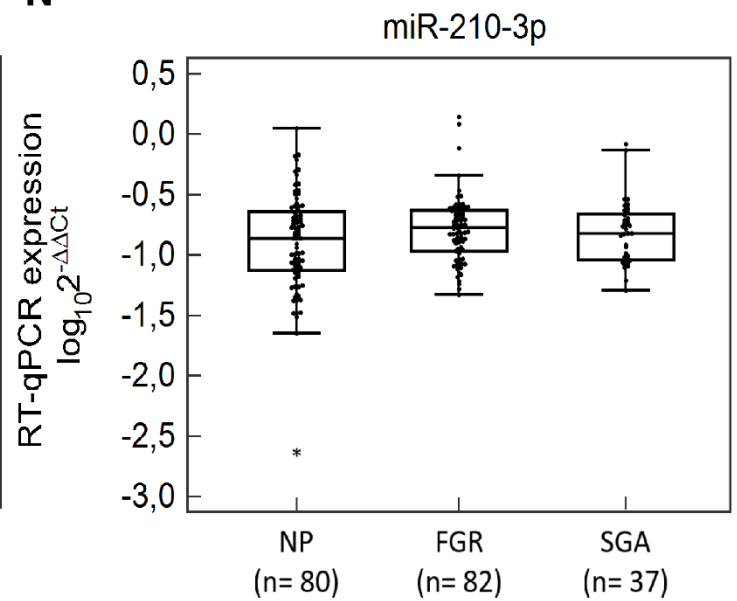
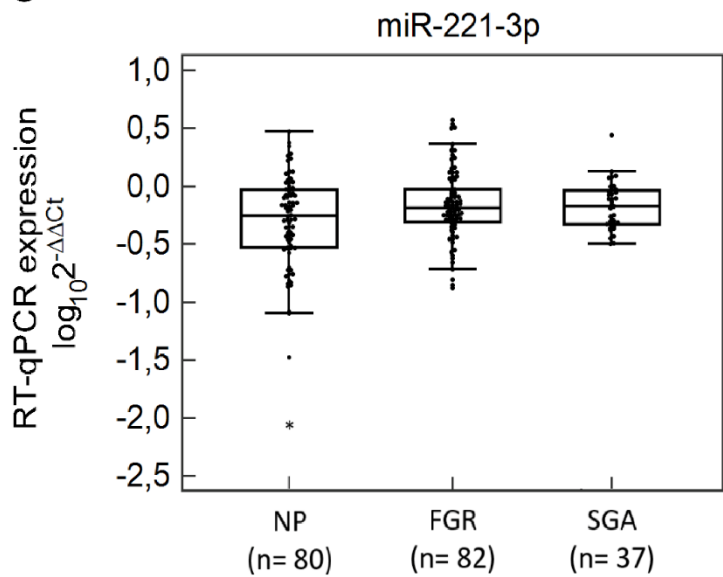
M**N****O**

Figure S2: Gene expression of cardiovascular disease-associated microRNAs in peripheral blood leukocytes in early stages of gestation—comparison between appropriate-for-gestational-age (AGA) fetuses, small-for-gestational-age (SGA) fetuses, and fetal growth-restricted (FGR) fetuses—statistical non-significant data after Benjamini–Hochberg correction. NP, normal pregnancies (appropriate-for-gestational-age fetuses); FGR, fetal growth restricted fetuses; SGA, small-for-gestational-age fetuses