

NAME Oct24-2013-NG
 EXPNO 32
 PROCNO 1
 Date_ 20131024
 Time 17.59
 INSTRUM spect
 FROBHD 5 mm F4BBO BB-
 PULPROG zgpg30
 TD 65536
 SOLVENT CDCl3
 NS 500
 DS 4
 SWH 24038.461 Hz
 FIDRES 0.366798 Hz
 AQ 1.3631988 sec
 RG 101
 DW 20.800 usec
 DE 6.50 usec
 TE 297.5 K
 D1 2.00000000 sec
 D11 0.03000000 sec
 TDO 1

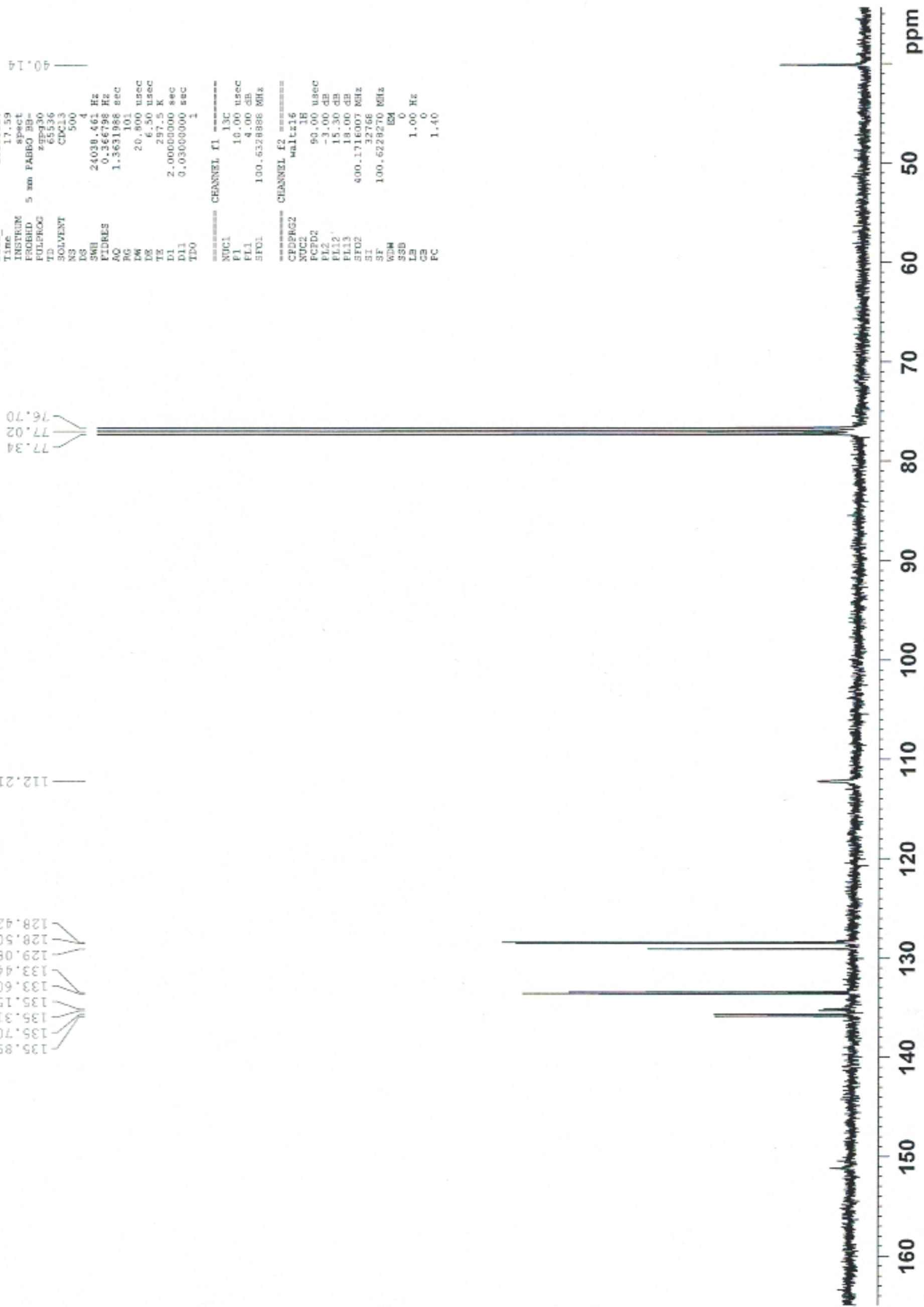
===== CHANNEL f1 =====
 NUC1 13C
 P1 10.00 usec
 PL1 4.00 dB
 SFO1 100.6228270 MHz

===== CHANNEL f2 =====
 CPDPRG2 waltz16
 NUC2 1H
 PCPD2 90.00 usec
 PL2 -3.00 dB
 PL12 15.30 dB
 PL13 18.00 dB
 SFO2 400.1716007 MHz
 SI 32768
 SF 100.6228270 MHz
 WDM 0
 SSB 0
 LB 0
 GB 0
 PC 1.40

135.89
 135.70
 135.31
 135.15
 133.60
 133.44
 129.08
 128.50
 128.42

112.21

77.34
 77.02
 76.70

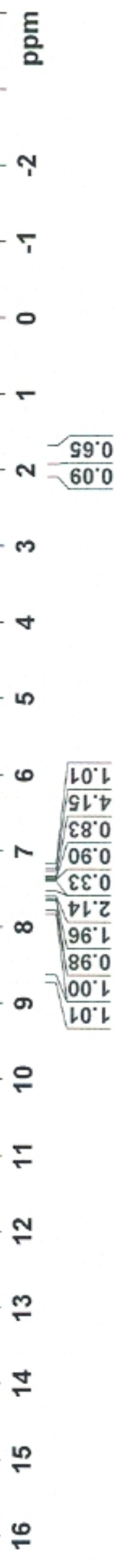


8.683
8.671
7.824
7.805
7.789
7.633
7.620
7.615
7.612
7.607
7.605
7.592
7.588
7.584
7.577
7.570
7.565
7.562
7.558
7.551
7.546
7.543
7.539
7.388
7.384
7.381
7.376
7.369
7.365
7.360
7.354
7.351
7.347
7.316
7.311
7.300
7.296
7.292
7.283
7.279
7.274
7.227
7.224
7.221
7.218
7.215
7.212
7.207
7.206
7.202
7.199
7.196
7.193
7.190
7.187

79

NAME Nov15-2013-NG
EXPNO 100
PROCNO 1
Date_ 20131115
Time 18.54
INSTRUM spect
PROBHD 5 mm PABBO BB-
PULPROG zg30
TD 65536
SOLVENT CDCl3
NS 16
DS 2
SWH 8223.685 Hz
FIDRES 0.125483 Hz
AQ 3.9646387 sec
RG 101
DM 60.800 usec
DS 6.50 usec
TE 302.4 K
D1 1.00000000 sec
TD0 1

CHANNEL f1
NUC1 1H
P1 9.30 usec
PL -3.50 dB
SFO1 400.1724712 MHz
SI 32768
SF 400.1700000 MHz
WDW EM
SSB 0
LB 0.30 Hz
GB 0
PC 1.00



9.35

```

NAME                      Nov15-2013-NG
EXPNO                      101
PROCNO                     1
Date_                      20131115
Time_                      18.57
INSTRUM                   spect
PROBHD                    5 mm PABBO BB-
PULPROG                   zgpg30
TD                         65536
SOLVENT                   CDCl3
NS                         16
DS                         4
SWH                        64102.563 Hz
FIDRES                    0.976127 Hz
AQ                        0.5112308 sec
RG                        2050
DW                        7.800 usec
DE                        6.50 usec
TE                        303.2 K
D1                        2.00000000 sec
D11                       0.03000000 sec
TD0                        1
===== CHANNEL f1 =====
NUC1                       31P
P1                        9.20 usec
PL1                       0.00 dB
SFO1                      161.9836957 MHz
===== CHANNEL f2 =====
CPDPRG2                   waltz16
NUC2                       1H
PCPD2                     90.00 usec
PL2                       -3.00 dB
PL12                      15.30 dB
PL13                      18.00 dB
SFO2                      400.1716007 MHz
SI                        32768
SF                        161.9917850 MHz
NEW                        EM
SSB                        0
LB                        1.00 Hz
GB                        0
PC                        1.40

```

100 50 0 -50 -100 -150 -200 ppm