

**Supplementary Table S1.** Antibodies used for flow cytometry and immunohistochemistry.

CD (antigen)	Rat clone	Manufacturer	Concentration	Dilution
CD43	W3/13	S	1.0 mg/ml	1:100
CD4	W3/25	S	1.0 mg/ml	1:100
CD8	OX8	S	1.0 mg/ml	1:100
CD19 Ig $\kappa$ -chain	OX12	S	1.0 mg/ml	1:100
-	OX62	S	0.1 mg/ml	1:30
CD68	ED1	S	0.1 mg/ml	1:70-1:100
-	HiS48	S	-	1:100
CD90	OX7	S	1.0 mg/ml	1:100
MHC CLASS II RT1B	OX6	S	1.0 mg/ml	1:100
MHC CLASS II RT1B	OX6 FITC	S	1.0 mg/ml	1:100
CD54 (ICAM-1)	1A29	S	1.0 mg/ml	1:50
IgG1	-	S	0.1 mg/ml	1:10
IgG2a	-	S	0.1 mg/ml	1:10
IgG1 PE	R3-34	BD	0.1 mg/ml	1:10
IgG PE	Poly24030	BL	0.1 mg/ml	1:10
IgG1 FITC	R3-34	BD	0.1 mg/ml	1:10
IgG FITC	HTK888	BL	0.5 mg/ml	1:10

S: Serotec Ltd, Kidlington, United Kingdom; BD: Becton Dickinson Biosciences Pharmingen,

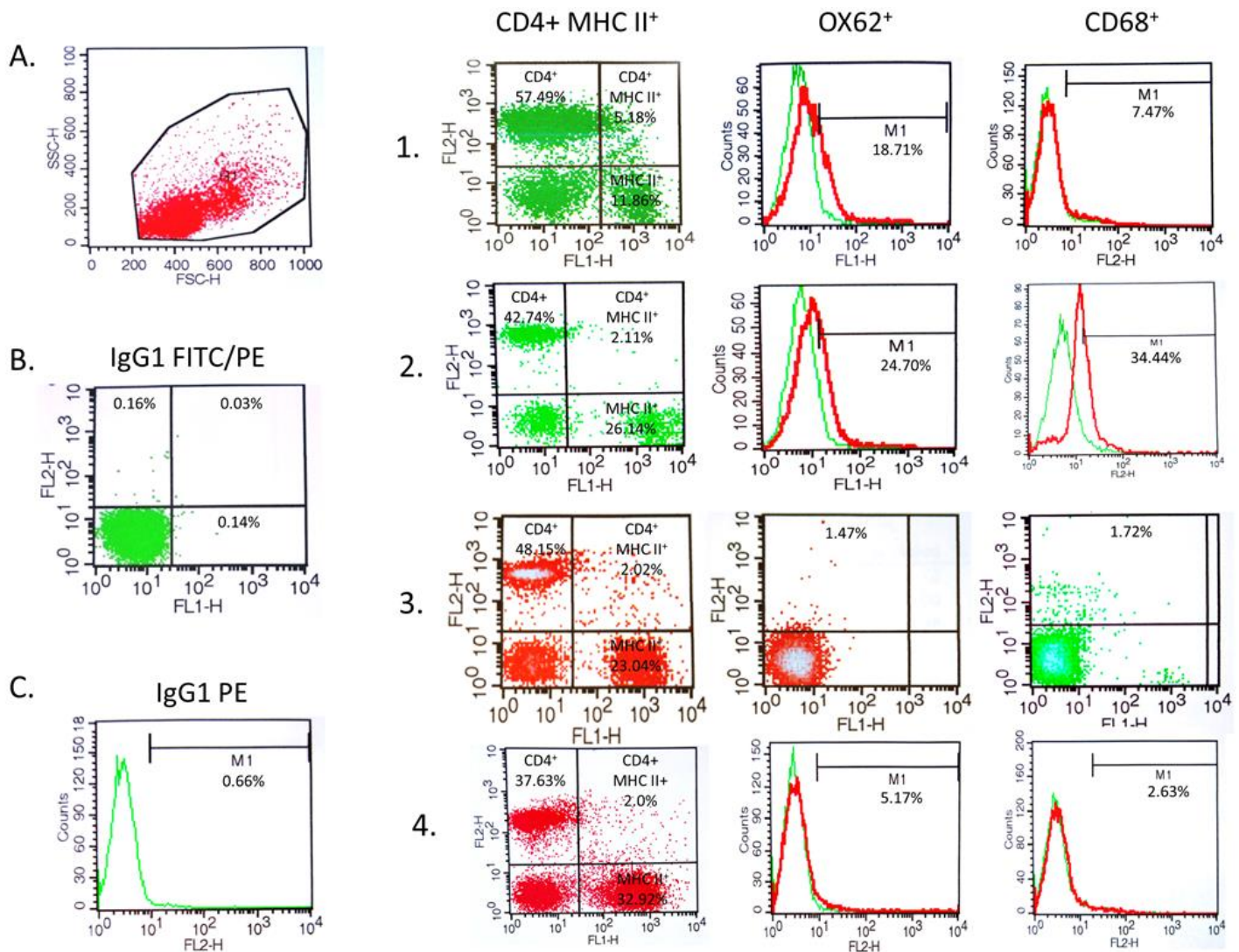
San Jose, CA, USA; BL: Bio Legend, San Diego, CA, USA.

**Supplementary Table S2.** The mean number  $\pm$  standard deviation of positively stained cells from four representative fields of view (magnification 400 $\times$ ) of popliteal lymph nodes section.

	T helper lymphocytes, monocytes CD4+	Granulocytes HiS48+	Dendritic cells OX62+	Macrophages, monocytes CD68+	Stem cells, immature B cells CD90+
Control	416 $\pm$ 86	35 $\pm$ 9	168 $\pm$ 68	91 $\pm$ 19	122 $\pm$ 21
<i>S. epidermidis</i>	192 $\pm$ 53	138 $\pm$ 30	75 $\pm$ 13	159 $\pm$ 16	196 $\pm$ 12
Interruption of lymphatics	354 $\pm$ 40	48 $\pm$ 22	42 $\pm$ 9	122 $\pm$ 19	149 $\pm$ 25
Interruption of lymphatics, <i>S. epidermidis</i>	186 $\pm$ 38	48 $\pm$ 9	45 $\pm$ 12	107 $\pm$ 15	114 $\pm$ 7

**Supplementary Table S3.** The mean number  $\pm$  standard deviation of positively stained cells from three representative fields of view (magnification 400 $\times$ ) of skin sections.

	MHC class II antigen presenting cells (dendritic cells, macrophages, lymphocytes)	Macrophages, monocytes CD68+	Stem cells, immature B cells CD90+
<i>S. epidermidis</i>	108 $\pm$ 40	120 $\pm$ 33	124 $\pm$ 30
Interruption of lymphatics, <i>S. epidermidis</i>	222 $\pm$ 16	377 $\pm$ 19	280 $\pm$ 38



**Supplementary Figure S1.** Example of flow cytometry gating strategy (the Cell Quest Pro program, Becton Dickinson) for leukocyte populations isolated from popliteal lymph nodes. Dot plots or histograms are presented for the CD4<sup>+</sup>, MHC II<sup>+</sup>, CD4<sup>+</sup> MHC II<sup>+</sup>, OX62<sup>+</sup> and CD68<sup>+</sup> subpopulations. A. Dot plots of physicochemical properties of cells. FSC-H: Forward Scatter Channel high peak. SSC-H: Side Scatter Channel high peak. B. and C. isotypic controls.

1. Control: normal lymph flow and  $7 \times 0.9\%$  NaCl injection. 2. *S. epidermidis*: normal lymph flow and  $7 \times$  infection with *S. epidermidis*. 3. Interruption of lymphatics: lymph stasis and  $7 \times 0.9\%$  NaCl injection. 4. Interruption of lymphatics and *S. epidermidis*: lymph stasis and  $7 \times$  infection with *S. epidermidis*.