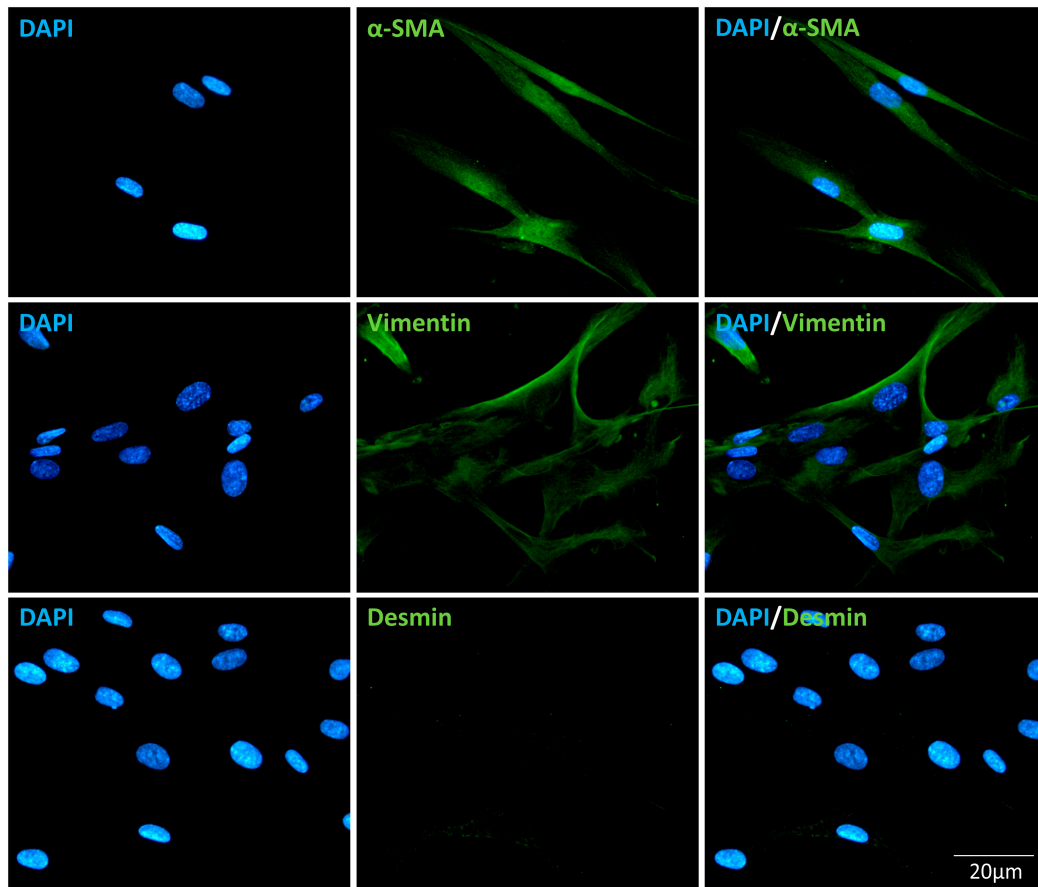
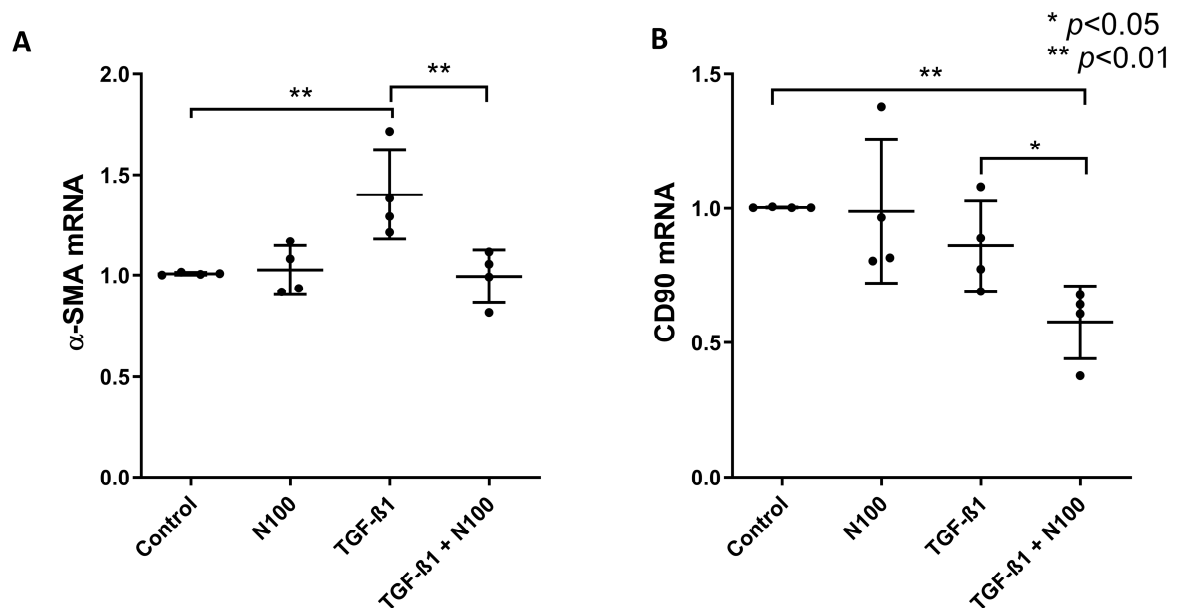


## Supplementary Materials



**Figure S1.** Characterization of SELMs through immunofluorescence staining for  $\alpha$ -SMA, vimentin, and desmin. SELMs are characterized by the expression of  $\alpha$ -SMA and vimentin and the absence of desmin expression. Cell nuclei are stained with DAPI.



**Figure S2.** The mRNA and protein expression of  $\alpha$ -SMA and CD90 after treatment with TGF- $\beta_1$  and niclosamide.  $\alpha$ -SMA (A) and CD90 (B) mRNA expression after treatment with niclosamide at 100 nM concentration, TGF- $\beta_1$  at 5 ng/mL, or their combination. Mean values of data from experiments performed in triplicate on SELMs from 4 individuals are shown. N100: niclosamide 100 nM.

