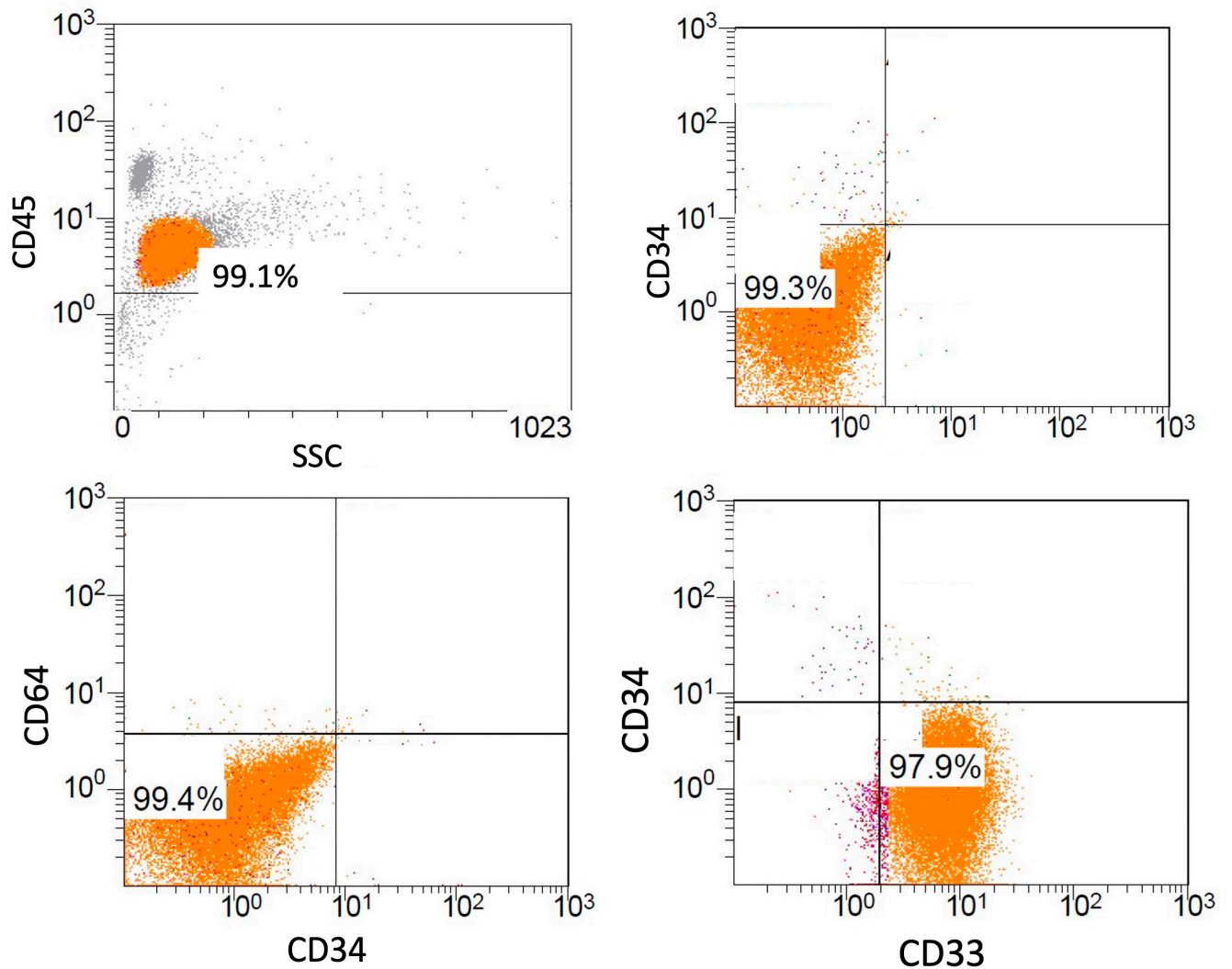
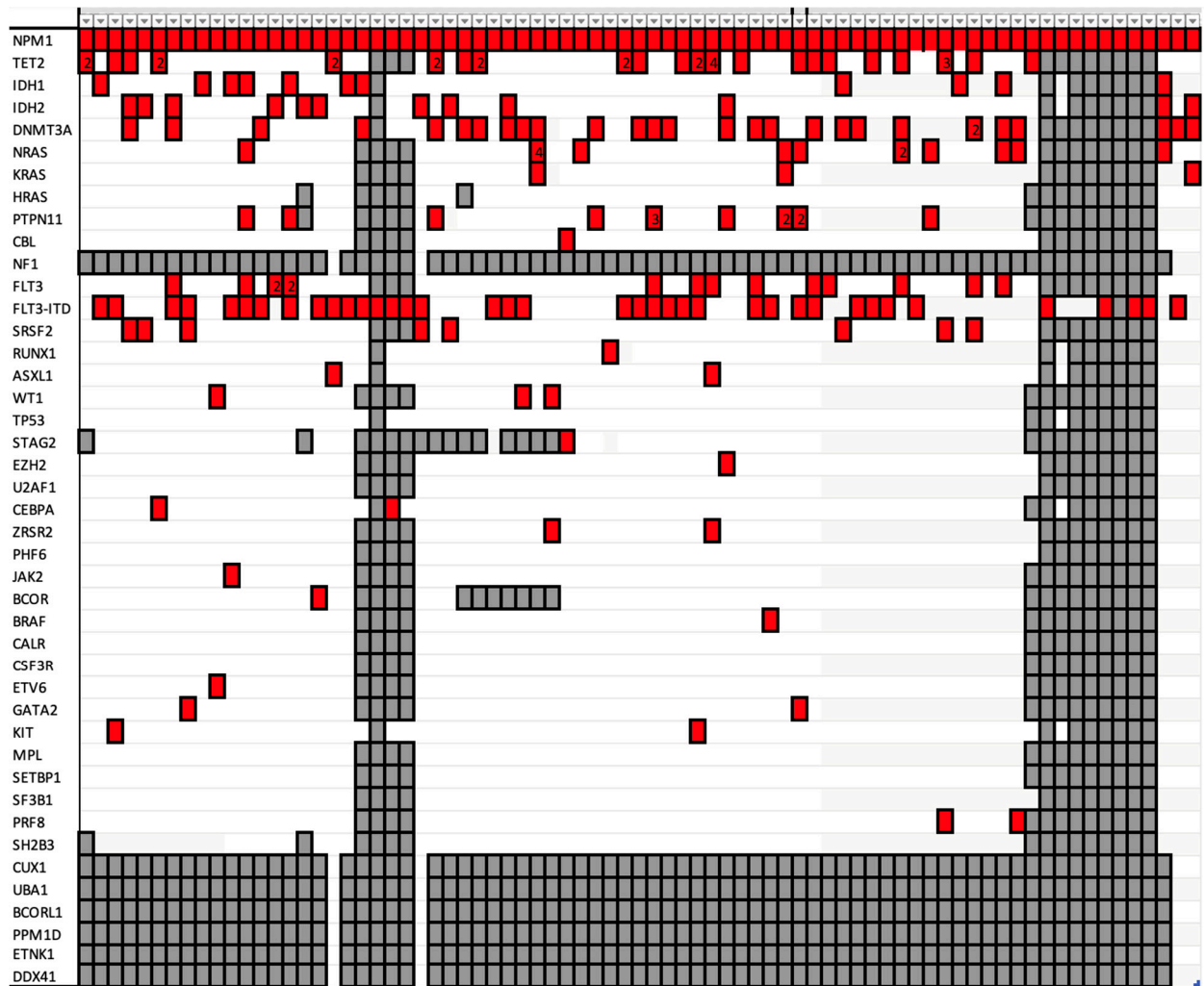


**Figure S1.**



**Typical immunophenotype of an “acute-promyelocytic leukemia-like” NPM1-mutated AML case of our cohort.** Negativity for CD34 and HLA-DR (“double-negative” immunophenotype, similarly to APL). Negativity for the monoblastic/monocytic marker CD64. Clear and typical positivity for CD33.

**Figure S2.**



**Mutation cascade.** Each column represents one NPM1-mutated AML case. All NPM1-mutated AML cases are included (“APL-like”, “non-APL-like”). A red box means presence of mutation of the respective gene, an empty box absence of mutation, a grey box gene not included in the panel. Number noted in some of the red box means more than one mutation in the respective gene.