



Correction

Correction: D'Amico et al. Toxic Exposure to Endocrine Disruptors Worsens Parkinson's Disease Progression through NRF2/HO-1 Alteration. *Biomedicines* 2022, 10, 1073

Ramona D'Amico ^{1,†}, Enrico Gugliandolo ^{2,†}, Rosalba Siracusa ¹, Marika Cordaro ³, Tiziana Genovese ¹, Alessio Filippo Peritore ¹, Rosalia Crupi ², Livia Interdonato ¹, Davide Di Paola ¹, Salvatore Cuzzocrea ^{1,*}, Roberta Fusco ^{4,*}, Daniela Impellizzeri ^{1,‡} and Rosanna Di Paola ^{2,‡}

¹ Department of Chemical, Biological, Pharmaceutical and Environmental Sciences, University of Messina, 98166 Messina, Italy; rdamico@unime.it (R.D.); rsiracusa@unime.it (R.S.); tiziana.genovese@unime.it (T.G.); aperitore@unime.it (A.F.P.); interdonatol@unime.it (L.I.); dipaolad@unime.it (D.D.P.); dimpellizzeri@unime.it (D.I.)

² Department of Veterinary Science, University of Messina, 98168 Messina, Italy; egugliaandolo@unime.it (E.G.); rcrupi@unime.it (R.C.); dipaolar@unime.it (R.D.P.)

³ Department of Biomedical, Dental and Morphological and Functional Imaging, University of Messina, 98125 Messina, Italy; marika.cordaro@unime.it

⁴ Department of Clinical and Experimental Medicine, University of Messina, 98125 Messina, Italy

* Correspondence: salvator@unime.it (S.C.); rfusco@unime.it (R.F.); Tel.: +39-090-676-5208 (S.C.)

† These authors contributed equally to this work.

‡ Daniela Impellizzeri and Rosanna Di Paola share senior authorship.



Citation: D'Amico, R.; Gugliandolo, E.; Siracusa, R.; Cordaro, M.; Genovese, T.; Peritore, A.F.; Crupi, R.; Interdonato, L.; Di Paola, D.; Cuzzocrea, S.; et al. Correction: D'Amico et al. Toxic Exposure to Endocrine Disruptors Worsens Parkinson's Disease Progression through NRF2/HO-1 Alteration. *Biomedicines* 2022, 10, 1073. *Biomedicines* 2024, 12, 834. <https://doi.org/10.3390/biomedicines12040834>

Received: 12 March 2024

Revised: 2 April 2024

Accepted: 4 April 2024

Published: 10 April 2024



Copyright: © 2024 by the authors. Licensee MDPI, Basel, Switzerland. This article is an open access article distributed under the terms and conditions of the Creative Commons Attribution (CC BY) license (<https://creativecommons.org/licenses/by/4.0/>).

Errors in Figures

In the original publication [1] for panels in Figures 2 and 3, the authors unintentionally assembled some wrong figures. In Figure 2, in the group MPTP + PFOS, they inadvertently attached the wrong picture, and in Figure 3, in the groups Sham + CP and Sham + DEP, they made a copy and paste of the same figure. The authors checked all the data in their laboratory, and they were able to find the original photos and prepare a revised figure using an appropriate representative image from their database belonging to the experimental groups in question. The authors apologize for any inconvenience caused by this oversight. These errors do not affect the results and conclusions published in the article. The new Figures 2 and 3 appear below. The authors state that the scientific conclusions are unaffected. This correction was approved by the Academic Editor. The original publication has also been updated.

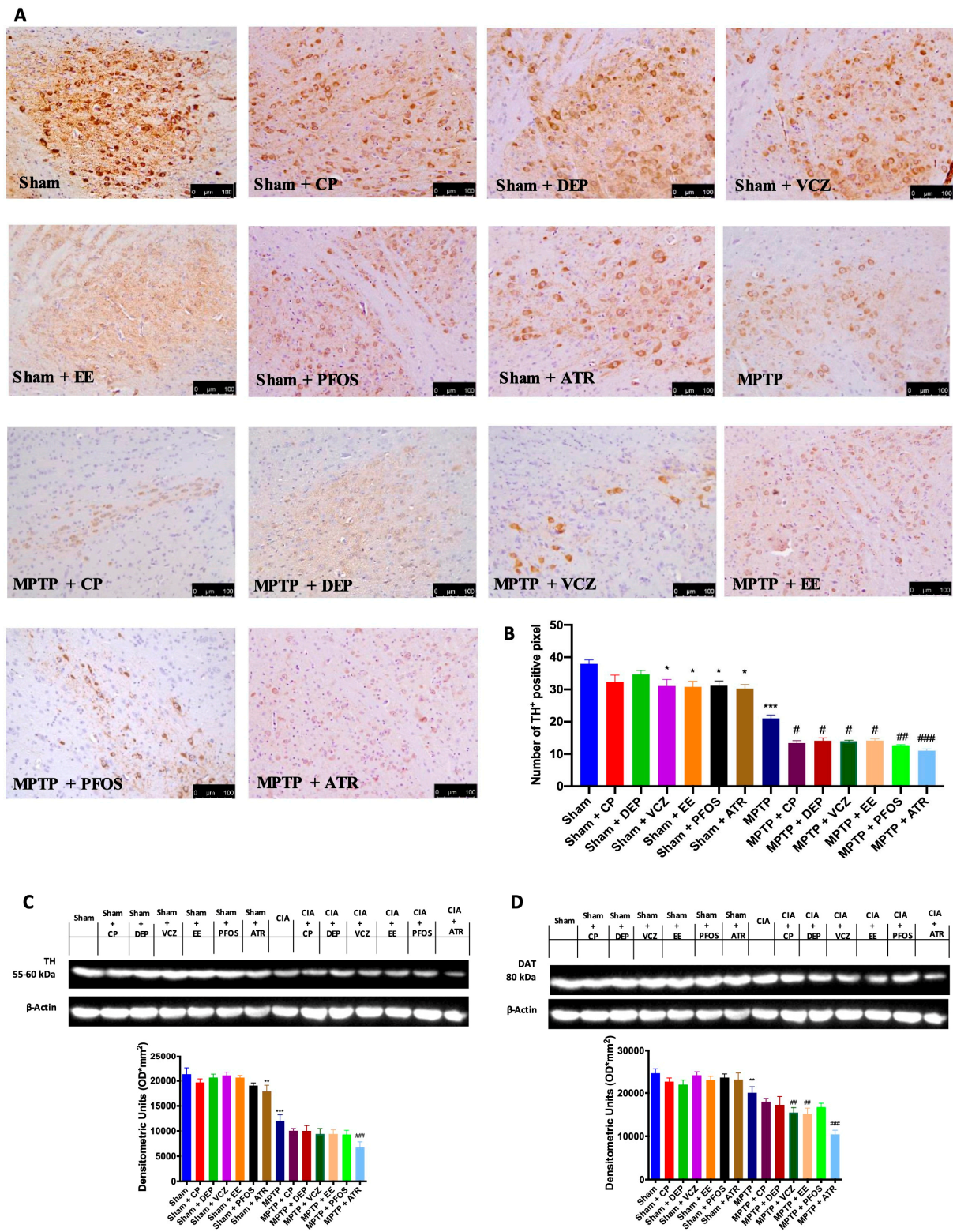


Figure 2. Immunohistochemical evaluation in the midbrain for TH expression (A). Graphical quantification of TH expression (B). Western blots and densitometric analysis of TH (C) and DAT (D). A 20× magnification is shown (100-µm scale bar). A demonstrative blot of lysates with a densitometric analysis for all animals is shown. Data are expressed as the mean ± SEM of N = 6 mice/group. * *p* < 0.05 vs. sham; ** *p* < 0.01 vs. sham; *** *p* < 0.001 vs. sham; # *p* < 0.05 vs. MPTP; ## *p* < 0.01 vs. MPTP; ### *p* < 0.001 vs. MPTP.

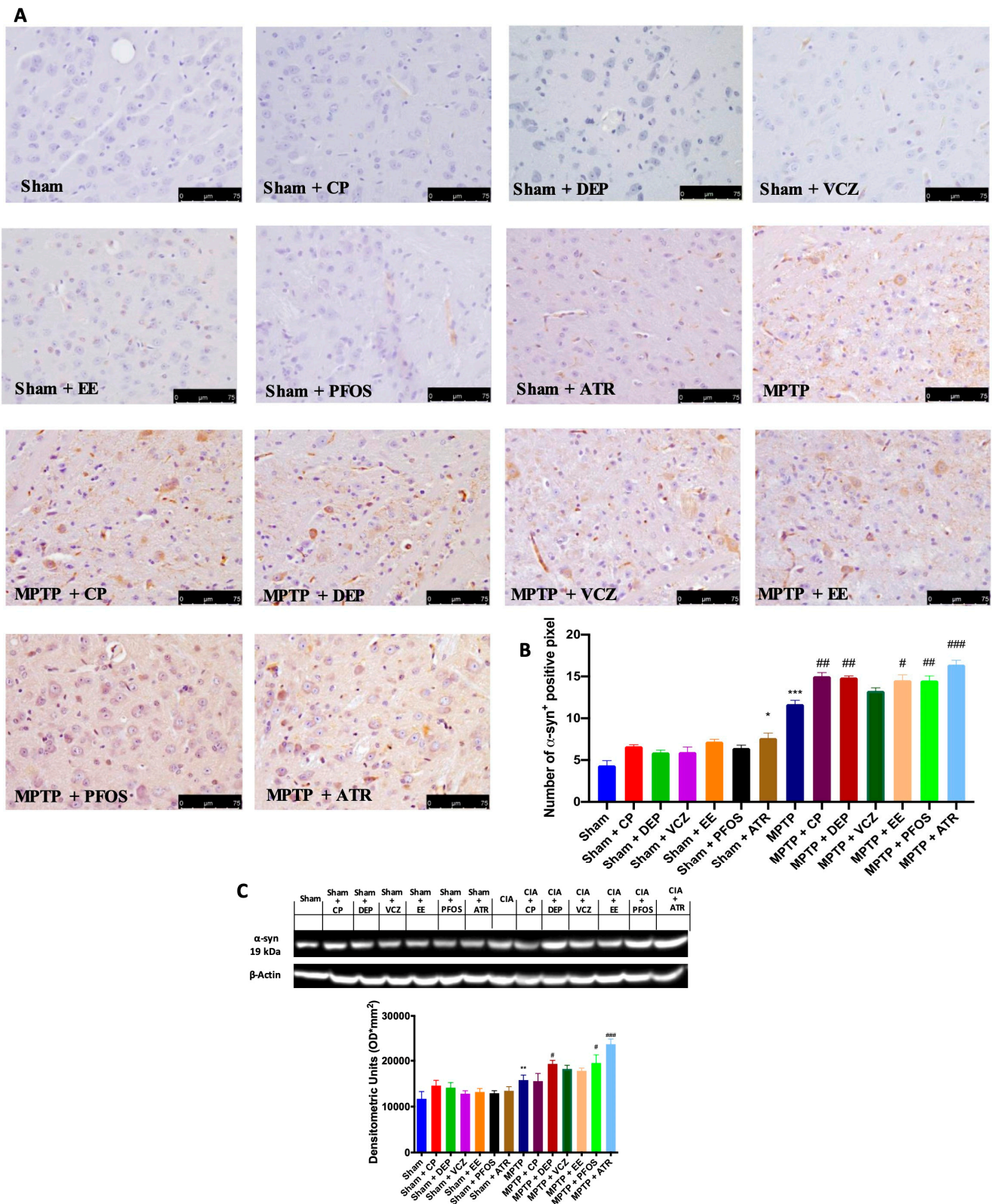


Figure 3. Immunohistochemical evaluation for α -syn expression (A). Graphical quantification of α -syn expression (B). Western blot and densitometric analysis of α -syn (C). A 40 \times magnification is shown (75- μ m scale bar). A demonstrative blot of lysates with a densitometric analysis for all animals is shown. Data are expressed as the mean \pm SEM of N = 6 mice/group. * $p < 0.05$ vs. sham; ** $p < 0.01$ vs. sham; *** $p < 0.001$ vs. sham; # $p < 0.05$ vs. MPTP; ## $p < 0.01$ vs. MPTP; ### $p < 0.001$ vs. MPTP.

Reference

1. D'Amico, R.; Gugliandolo, E.; Siracusa, R.; Cordaro, M.; Genovese, T.; Peritore, A.F.; Crupi, R.; Interdonato, L.; Di Paola, D.; Cuzzocrea, S.; et al. Toxic Exposure to Endocrine Disruptors Worsens Parkinson's Disease Progression through NRF2/HO-1 Alteration. *Biomedicines* **2022**, *10*, 1073. [[CrossRef](#)] [[PubMed](#)]

Disclaimer/Publisher's Note: The statements, opinions and data contained in all publications are solely those of the individual author(s) and contributor(s) and not of MDPI and/or the editor(s). MDPI and/or the editor(s) disclaim responsibility for any injury to people or property resulting from any ideas, methods, instructions or products referred to in the content.