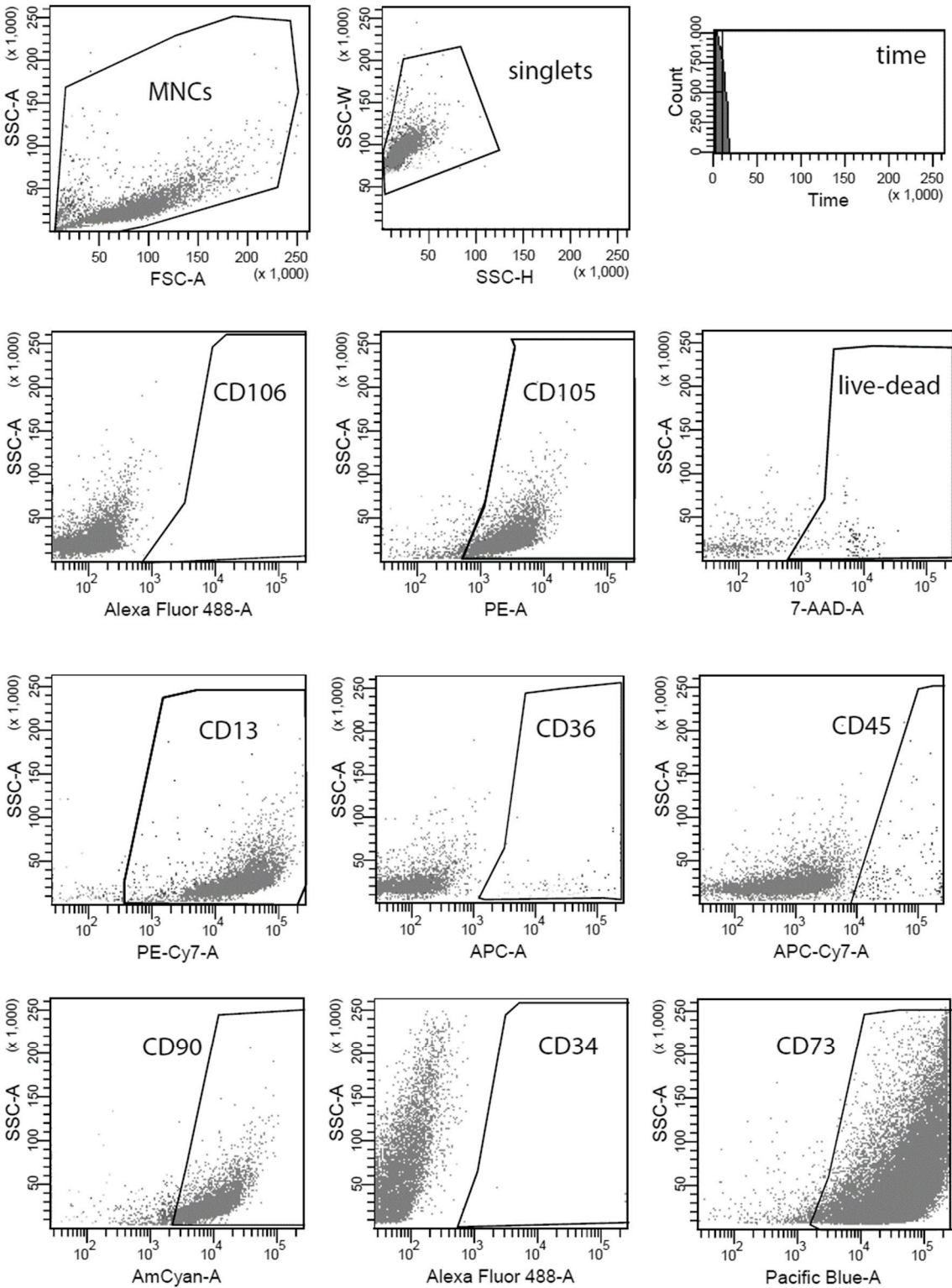


Supplementary data

1



2

Surface protein	[%] of viable singlets	
	Mean value, n=3	Standard Deviation, SD
CD13	98.10	0.75
CD45	1.95	0.92
CD90	85.50	11.38
CD34	0.11	0.16
CD73	96.17	4.54
CD105 (Endoglin)	84.87	8.01
CD36	1.54	1.09
CD106 (VCAM-1)	0.34	0.30

Supplementary Figure 1. Surface marker expression in human adipose -derived mesenchymal stem cells (ADSC) detected by flow cytometry. **(A)** Representative illustration of a flow cytometric analysis of ADSC at passage 8 using mesenchymal and hematopoietic stem cell markers. Singlets (dot plot SSC-W versus SSC-H) from mononuclear cells (MNCs, plot SSC-A versus FSC-A) and negative-expressing cells for 7-AAD were included for further analysis. Mesenchymal stem cell markers (CD105, CD13, CD90, CD73) were present whereas hematopoietic stem cell markers (CD34, CD45) as well as bone marrow specific antigen CD36 were hardly to detect. **(B) Means of percentages** of the corresponding CD's of viable singlets. n=3 (ADSC were taken from passages 8(n=2) and 9 (n=1))