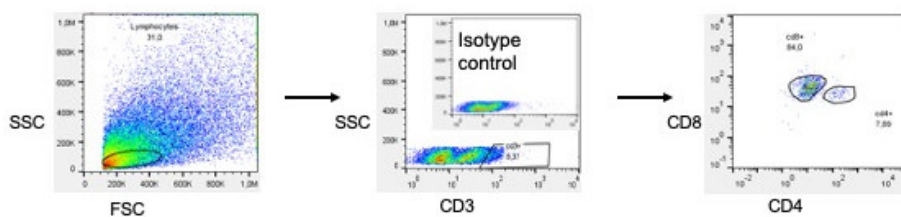


Supplementary Table S1. Therapy scheme and dosages. Overview of the different therapy groups with the respective therapy applications.

Therapy	Dosage	Frequency of application	Type of application
Bevacizumab	5 µg/g body weight	twice	i. v. bolus
Doxorubicin	5 µg/g body weight	once	i. v. bolus
0,9 % NaCl	5 µg/g body weight	twice	i. v. bolus



Supplementary Figure S2. Exemplary flow cytometry gating strategy; gating strategy concerning CD4+ and CD8+ cells.