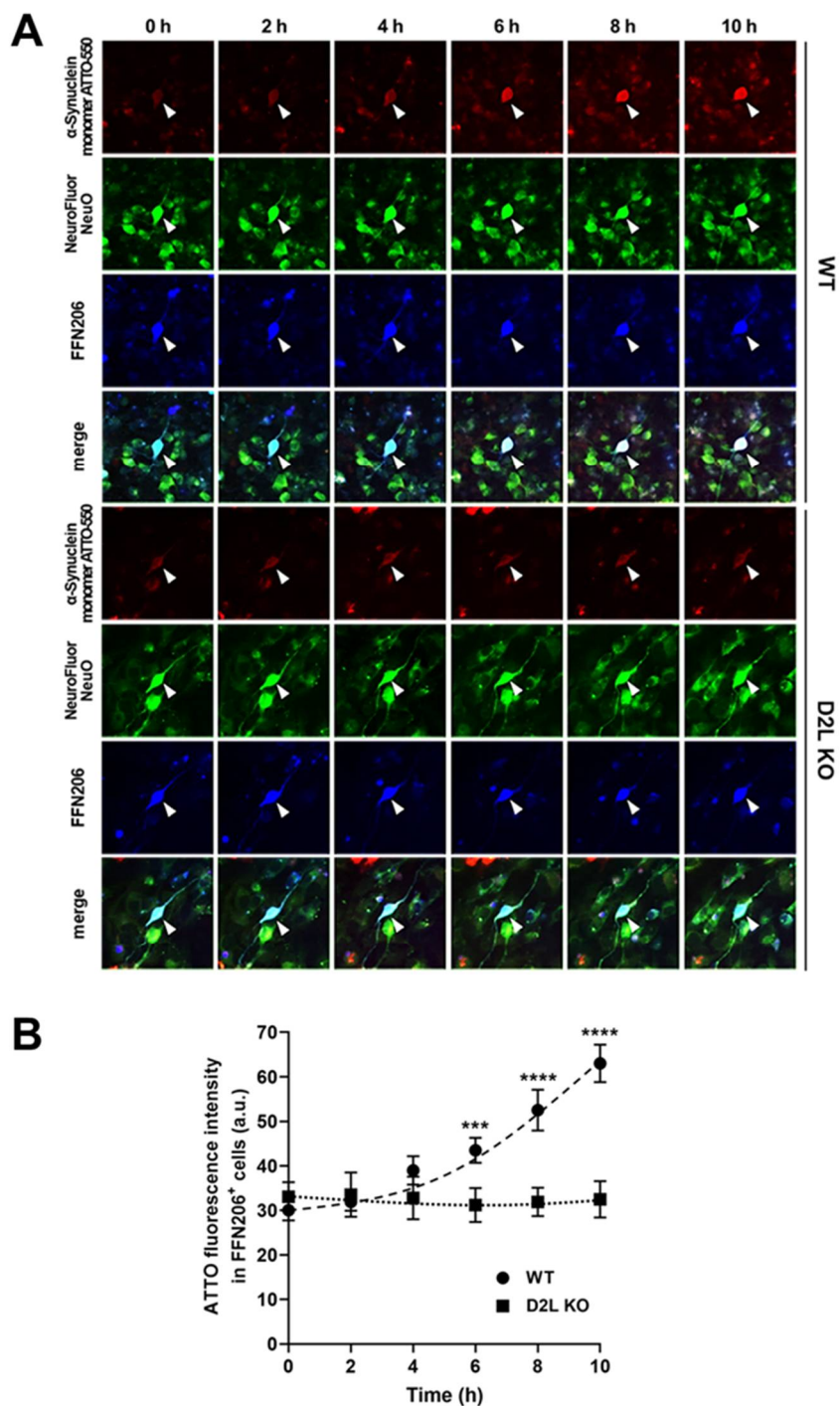


Supplementary Materials:



Supplementary Figure 1. Time-dependency of α -synuclein monomer uptake in dopaminergic neurons. (A) Wild type (WT) or dopamine $D_{2L}^{-/-}$ neurons were labeled with NeuroFluor NeuO, a neuronal marker, and FFN206, a VMAT2 substrate to indicate dopaminergic neurons, then exposed to α -synuclein monomer ATTO-550. The ability of fluorescence-labeled α -synuclein was analyzed by time-lapse imaging. (B) The quantitative analysis of ATTO-550-labeled α -synuclein monomer fluorescence intensity of individual NeuO⁺ FFN206⁺ neurons. *** $p < 0.001$, **** $p < 0.0001$ versus WT, $n = 21$ in three independent experiments.