

A New Light on Potential Therapeutic Targets for Colorectal Cancer Treatment

Wei-Lun Tsai ^{1,†}, Chih-Yang Wang ^{2,3,†}, Yu-Cheng Lee ⁴, Wan-Chun Tang ^{2,3},
Gangga Anuraga^{1,3,5}, Hoang-Dang-Khoa-Ta ^{1,3}, Yung-Fu Wu ⁶,
Kuen-Haur Lee^{2,3,7,*}

¹ PhD Program for Cancer Molecular Biology and Drug Discovery, College of Medical Science and Technology, Taipei Medical University and Academia Sinica, Taipei 11031, Taiwan; mebar1995@gmail.com (W.L.T.); g.anuraga@unipasby.ac.id (G.A.); d621109004@tmu.edu.tw (H.-D.-K.T.)

² PhD Program for Cancer Molecular Biology and Drug Discovery, College of Medical Science and Technology, Taipei Medical University, Taipei 11031, Taiwan; chihyang@tmu.edu.tw (C.-Y.W.); yeas0310@hotmail.com(W.-C.T.)

³ Graduate Institute of Cancer Biology and Drug Discovery, College of Medical Science and Technology, Taipei Medical University, Taipei 11031, Taiwan

⁴ Graduate Institute of Medical Sciences, College of Medicine, Taipei Medical University, Taipei 11031, Taiwan; ycle0212@tmu.edu.tw

⁵ Department of Statistics, Faculty of Science and Technology, Universitas PGRI Adi Buana, Surabaya, East Java 60234, Indonesia

⁶ Department of Medical Research, Tri-Service General Hospital, School of Medicine, National Defense Medical Center, Taipei 11490, Taiwan; qrince@yahoo.com.tw

⁷ Cancer Center, Wan Fang Hospital, Taipei Medical University, Taipei 11031, Taiwan

* Correspondence: khlee@tmu.edu.tw

† These authors contributed equally to this work.

Supplemental Information includes two Supplemental Tables and one Supplemental Figure

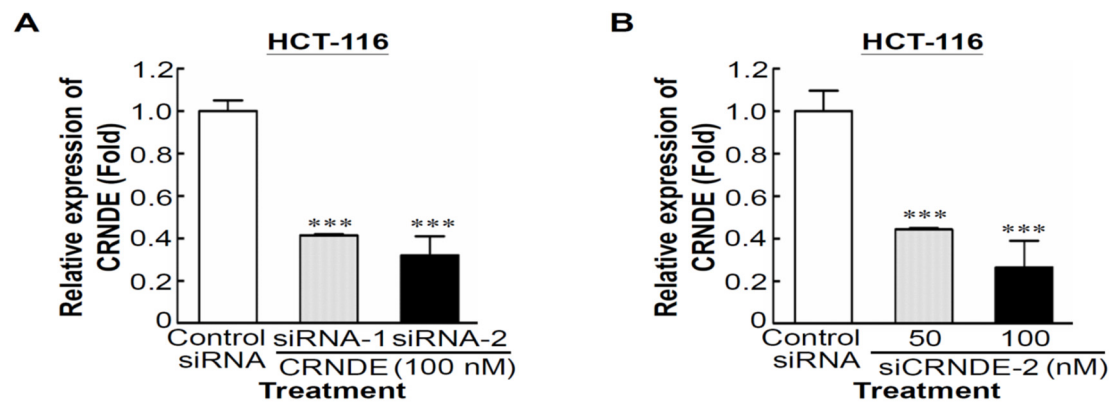
Supplementary Table S1. Sequences of small interfering (si)RNAs and primers

Sequences of siRNAs		
Gene name	Sense strand (5'-3')	Antisense strand (5'-3')
<i>CRNDE</i> 1#	GGGUAUUCCUGUUUAUAGAT T	UCUAUAAACAGGAAUACCCAA
<i>CRNDE</i> 2#	GUCUGCAAUUCAUAAUGGAT T	UCCAUUAUGAAUUGCAGACTT
Sequence of primers		
Gene name	Forward (5'-3')	Reverse (5'-3')
<i>CRNDE</i>	ATATTCAGCCGTTGGTCTTTGA	TCTGCGTGACAACTGAGGATTT
<i>MYLK</i>	GTCTTATGTTATCTTCCATTC TA	TATAATAAACTGTGGCAATAC TG
<i>GPX3</i>	GCCGGGGACAAGAGAAGT	GAGGACGTATTTGCCAGCAT
<i>ANGPTL4</i>	TCTCTGGAGGCTGGTGTTT	ACGCCTCTAGAGTCTGAGCA

Supplementary Table S2. Top 20 upregulated genes in colorectal carcinoma (CRC) (GSE21815)

T/N ratio	Gene symbol	Gene name
108.65	<i>DPEP1</i>	dipeptidase 1 (renal)
67.72	<i>KRT80</i>	keratin 80
59.75	<i>FABP6</i>	fatty acid-binding protein 6, ileal
56.90	<i>NKD2</i>	naked cuticle homolog 2 (<i>Drosophila</i>)
56.08	<i>FOXQ1</i>	forkhead box Q1
51.98	<i>KIAA1199</i>	KIAA1199 (CEMIP)
41.53	<i>ETV4</i>	ets variant 4
31.95	<i>TESC</i>	tescalcin
30.61	<i>FUT1</i>	fucosyltransferase 1 (galactoside 2-alpha-L-fucosyltransferase, H blood group)
30.49	<i>GAS2</i>	growth arrest-specific 2
29.49	<i>LOC100287482</i>	uncharacterized protein LOC100287482
29.03	<i>CRNDE</i>	colorectal neoplasia differentially expressed (non-protein coding)
28.73	<i>EPHX4</i>	epoxide hydrolase 4
26.53	<i>LY6E</i>	lymphocyte antigen 6 complex, locus E
25.31	<i>C2</i>	complement component 2
24.96	<i>TRIB3</i>	tribbles homolog 3 (<i>Drosophila</i>)
24.33	<i>TGFBI</i>	transforming growth factor, beta-induced, 68 kDa
20.96	<i>TDGF1</i>	teratocarcinoma-derived growth factor 1
19.64	<i>AJUBA</i>	ajuba LIM protein
18.95	<i>TUBB3</i>	tubulin, beta 3 class III

T/N, tumor/normal.



Supplementary Figure S1. The knockdown efficiency of CRNDE. **(A)** The knockdown efficiency of CRNDE by CRNDE siRNA #1 and #2. **(B)** The knockdown efficiency of CRNDE by CRNDE siRNA #2 at the concentration of 50 or 100 nM.