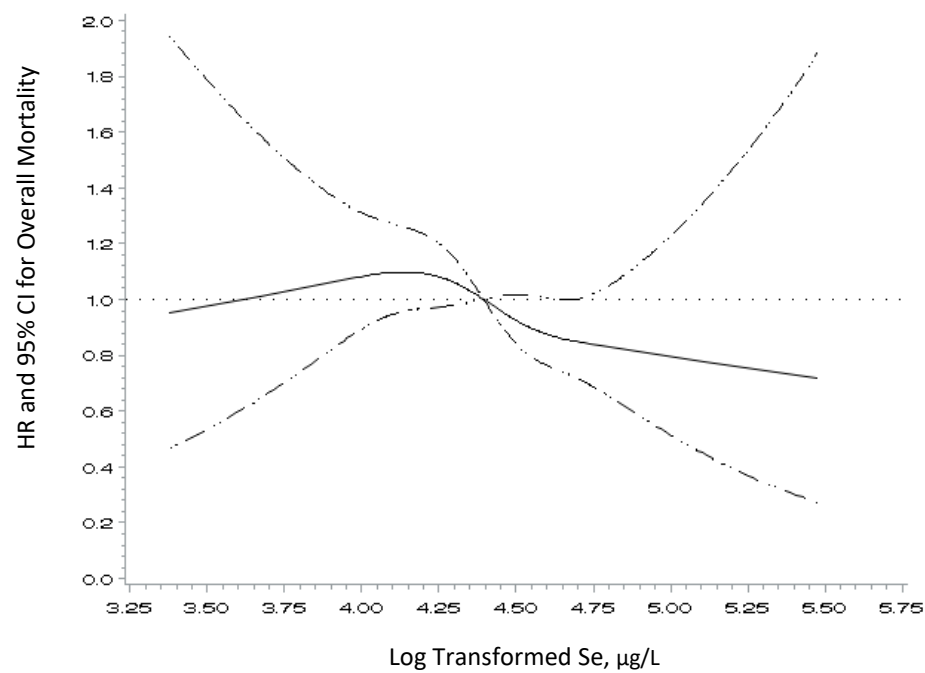
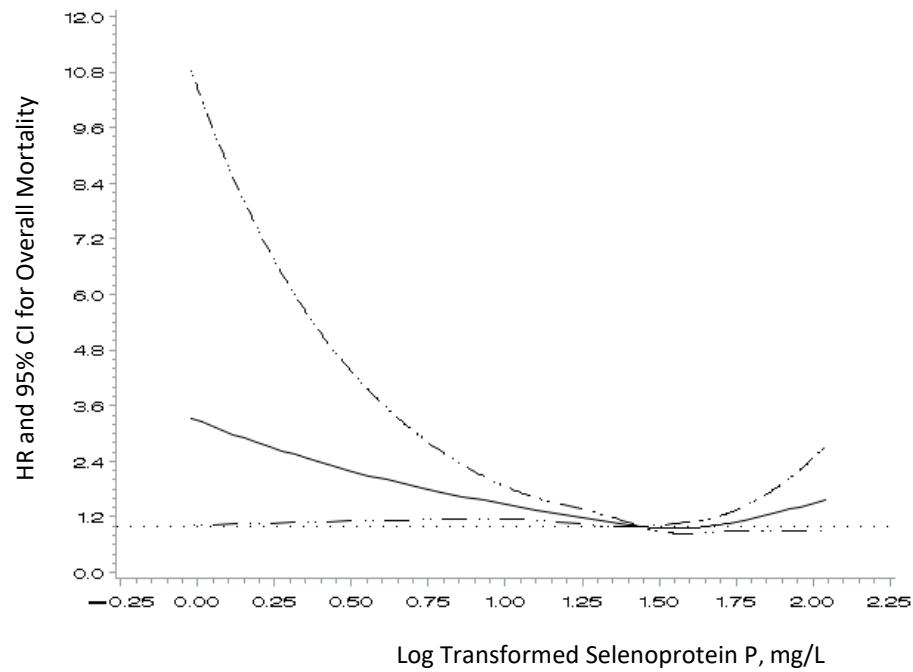


SUPPLEMENTARY FIGURES

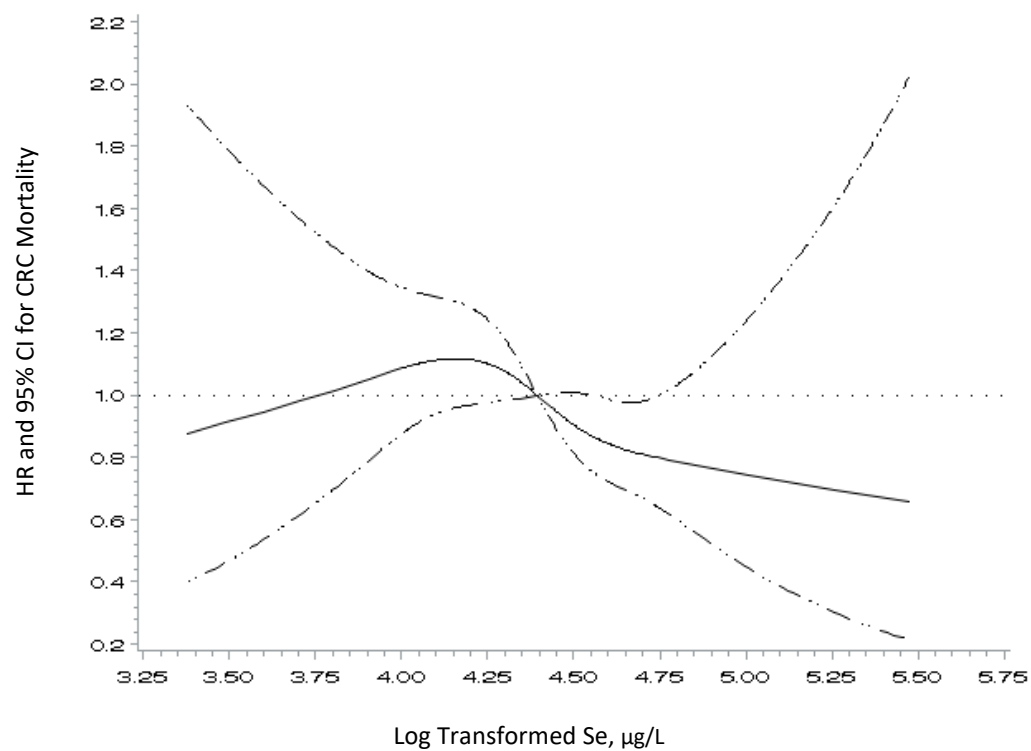
**Supplementary Figure S1.** Spline analysis showing the association between log transformed blood Se concentrations and risk for overall mortality; *P*-value for linearity = 0.07.



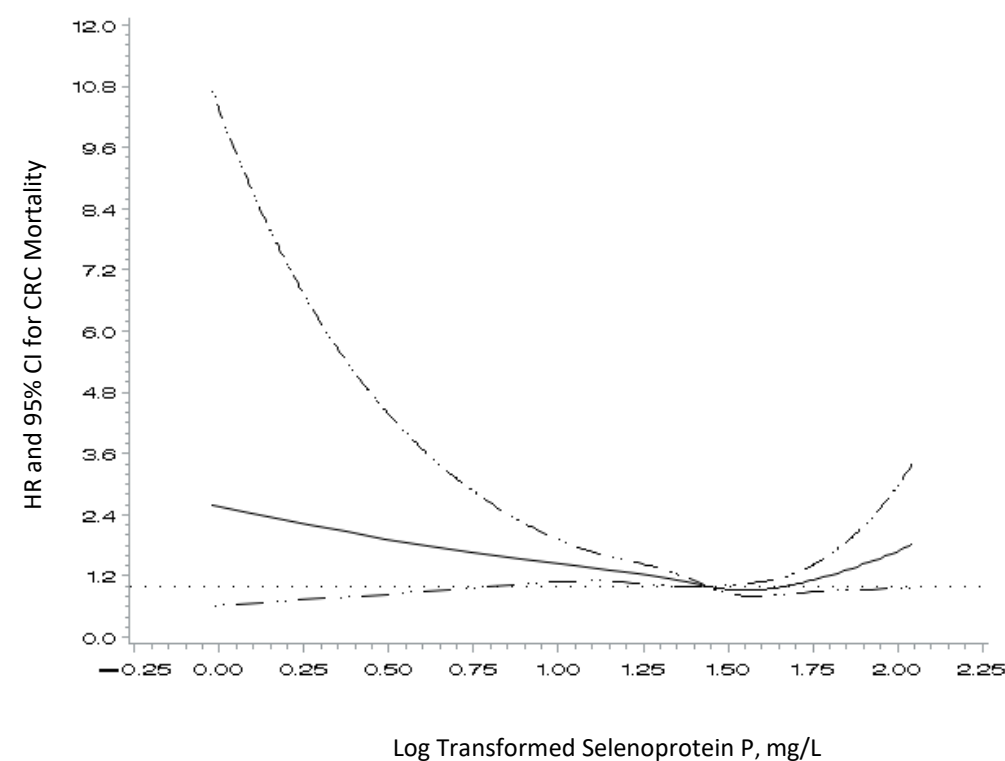
**Supplementary Figure S2.** Spline analysis showing the association between log transformed blood SELENOP concentrations and risk for overall mortality; *P*-value for linearity = 0.05



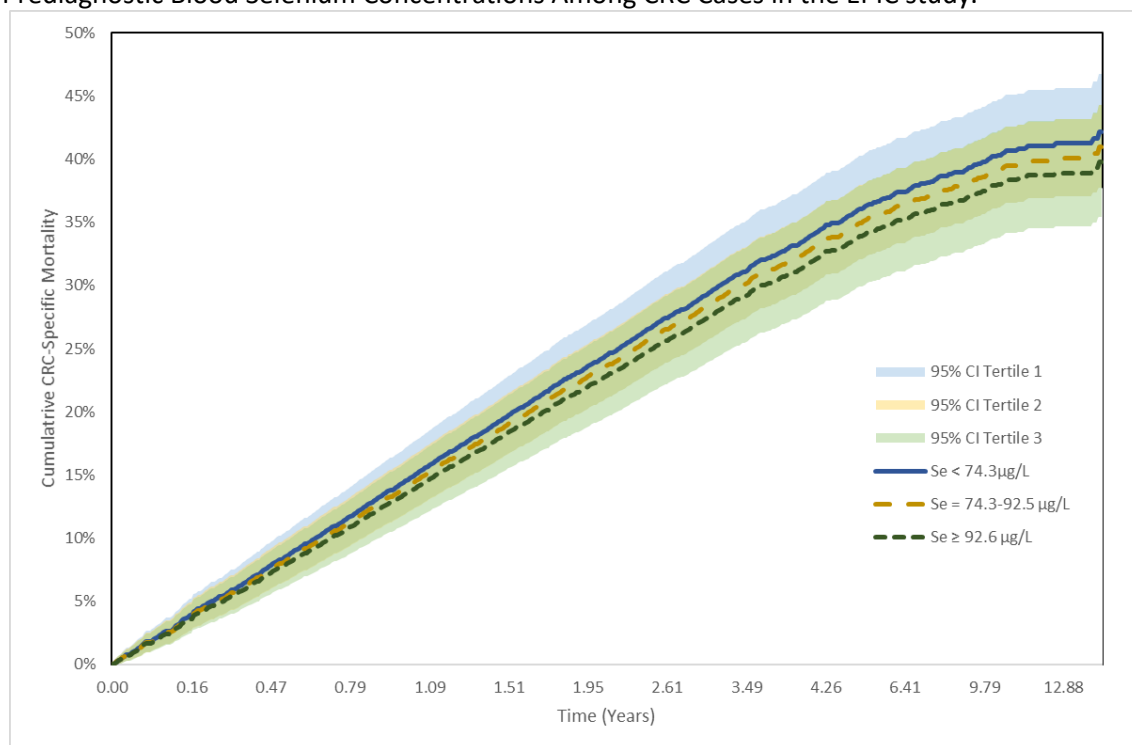
**Supplementary Figure S3.** Spline analysis showing the association between log transformed blood Se concentrations and risk for CRC-specific mortality; *P*-value for linearity = 0.07



**Supplementary Figure S4.** Spline analysis showing the association between log transformed blood SELENOP concentrations and risk for CRC-specific mortality; *P*-value for linearity = 0.12



**Supplementary Figure S5.** Cumulative Incidence Curves of CRC-Specific Mortality by Tertiles of Prediagnostic Blood Selenium Concentrations Among CRC Cases in the EPIC study.



**Supplementary Figure S6.** Cumulative Incidence Curves of CRC-Specific Mortality by Tertiles of Prediagnostic Blood Selenoprotein P (SELENOP) Concentrations Among CRC Cases in the EPIC study.

