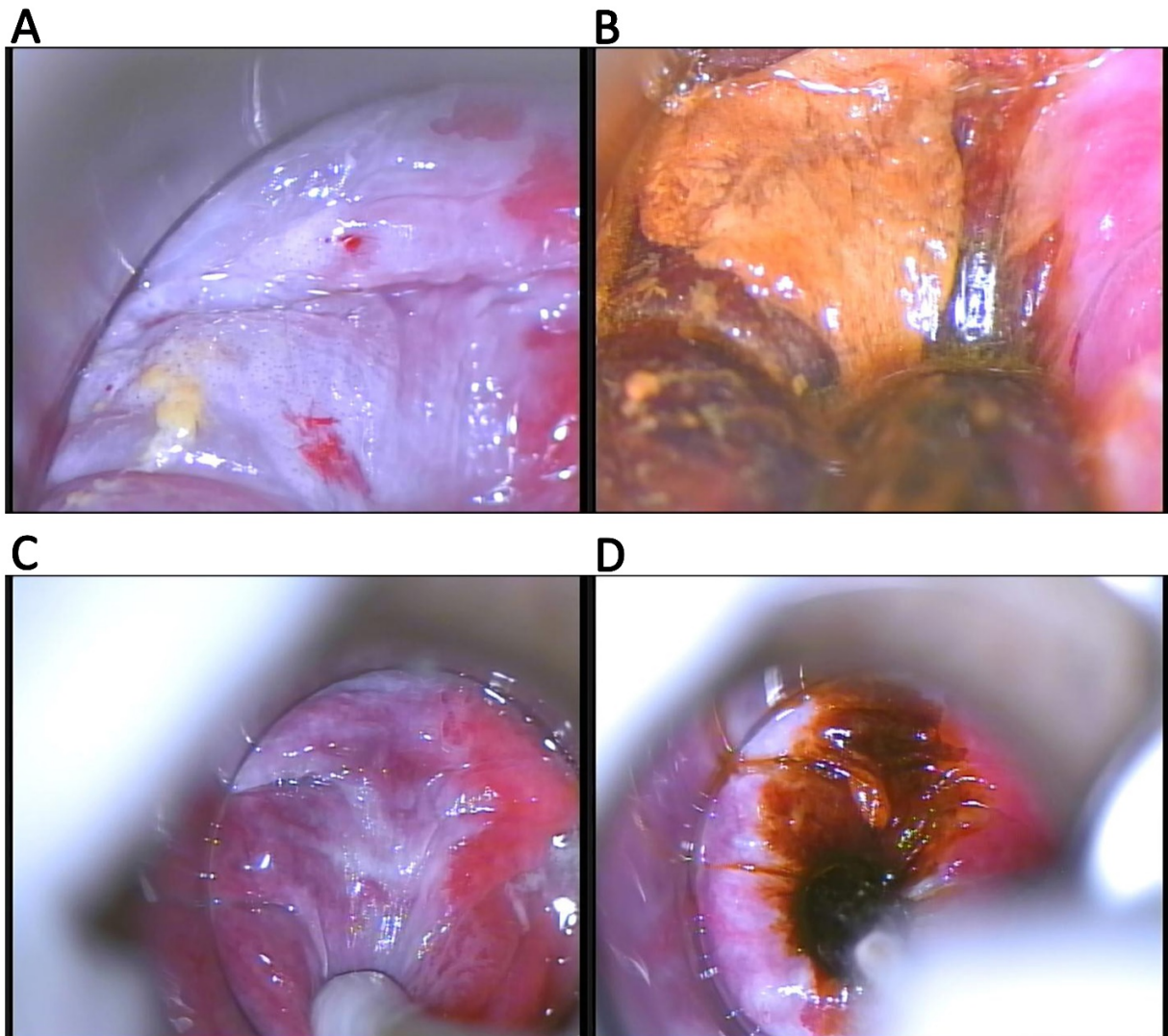


**Supplementary Materials:**

**Figure S1:** Regression of high-grade lesion (HSIL) in a participant in the experimental arm. **A:** acetic acid appearance of the lesion at T0. **B:** Lugol-iodine appearance of the lesion at T0. **C:** acetic acid appearance of the area at T1. **D:** Lugol-iodine appearance of the area at T1.



**Figure S2:** Progression of a dysplastic lesion in a participant in the observational arm. **A:** acetic acid appearance of the lesion at T0 (LSIL). **B:** Lugol-iodine appearance of the lesion at T0 (LSIL). **C:** acetic acid appearance of the area at T1 (HSIL). **D:** Lugol-iodine appearance of the area at T1 (HSIL).

