

Figure S1. There is no FABP3 and a very little FABP7 expression in Neuro-2A cells (mock cells). (A-B) Representative images of immunoblots probed with antibodies against FABP3 (1:200; 10676-1-AP, ProteinTech, Chicago) and FABP7 (1:200; AF3166, R&D Systems, Minneapolis, MN, USA). Blots with anti-β-tubulin antibody showed that a similar amount of protein was loaded.

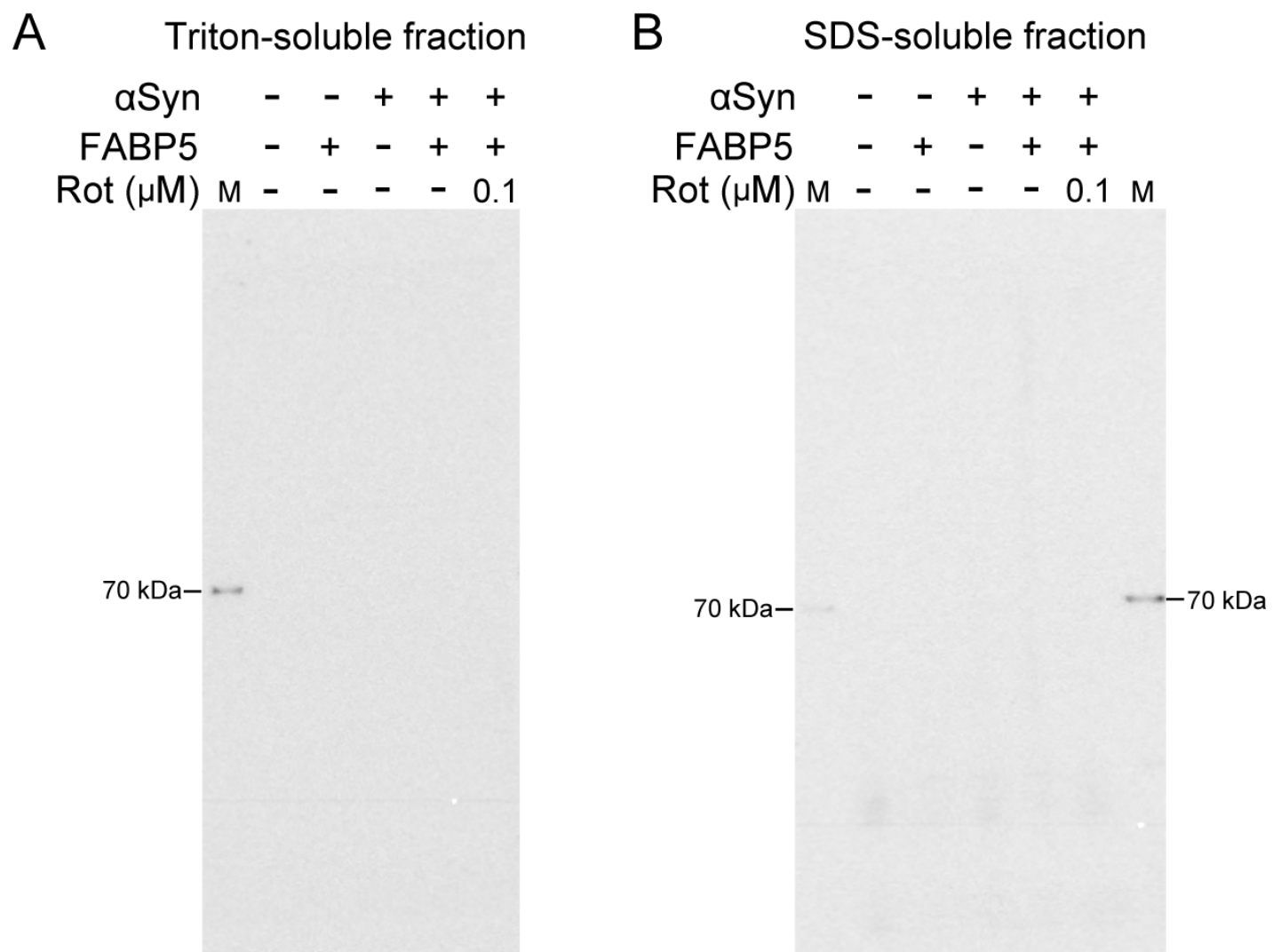


Figure S2. The negative control of immunoblotting assay. PVDF membranes were incubated without primary antibody and subsequently probing with anti-mouse IgG secondary antibody. And there is no target band detected. M: marker protein (SS-2000, Cosmo Bio Co., Ltd., Tokyo, Japan).

Figure 1 - original images

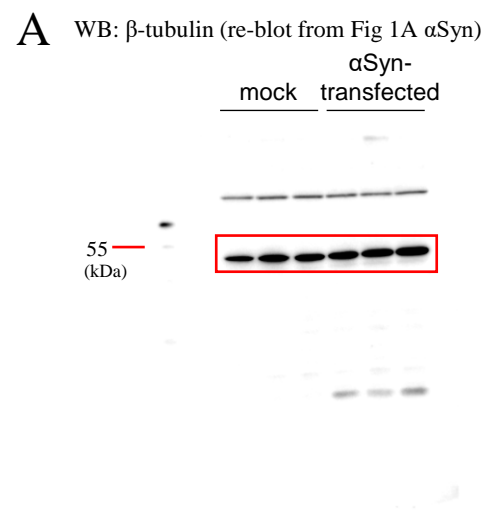
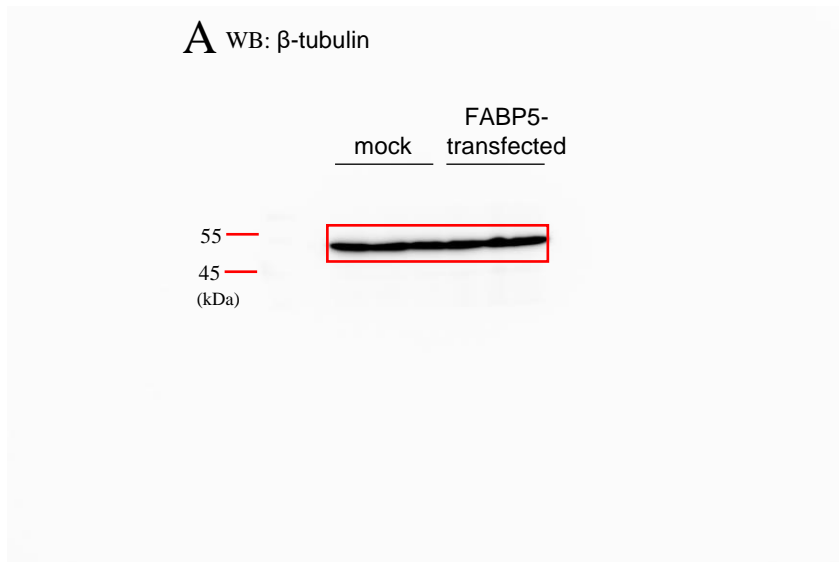
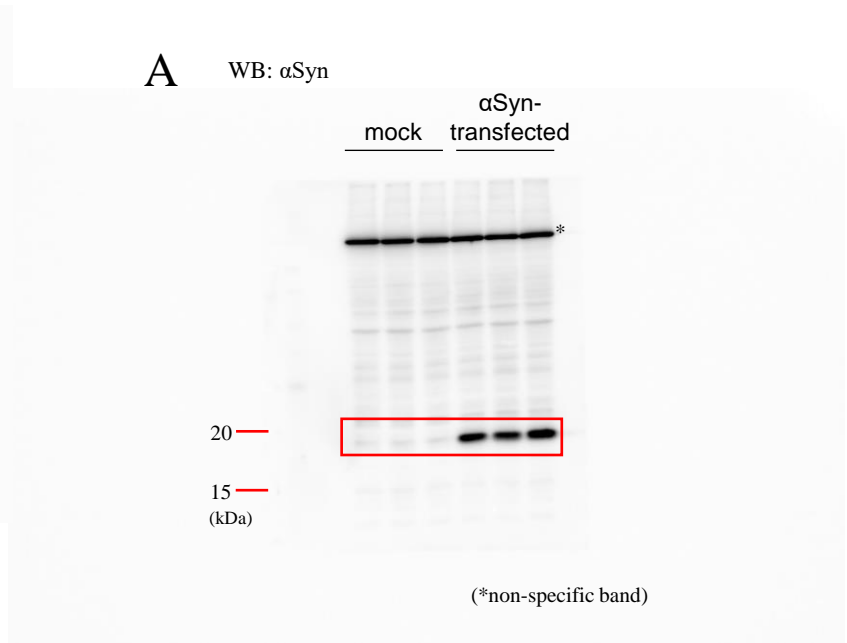
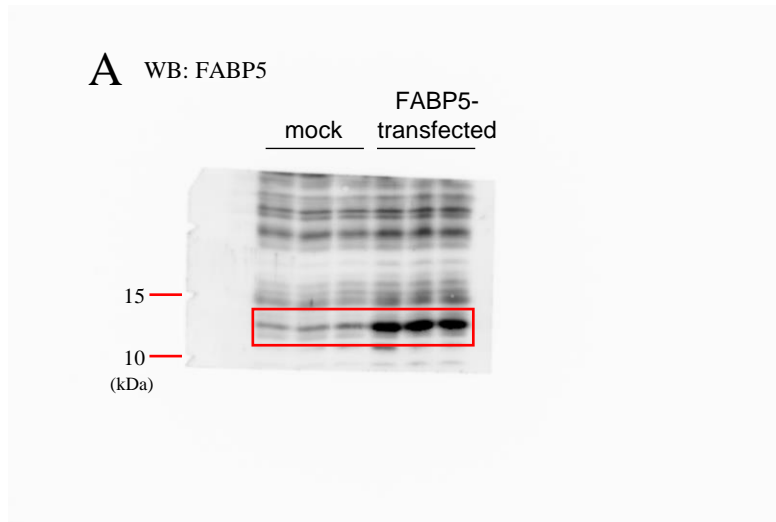
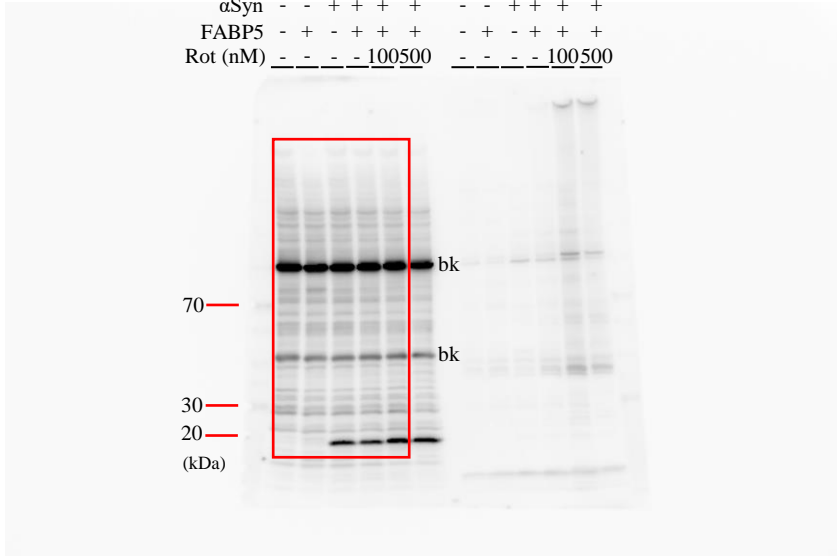


Figure 2 - original images

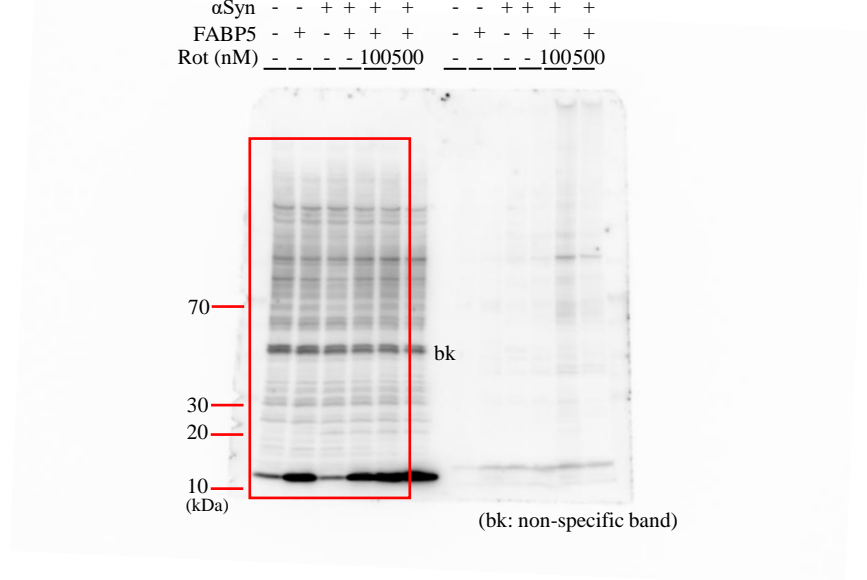
B WB: α Syn

	Triton-soluble fraction					SDS-soluble fraction				
α Syn	-	-	+	+	+	-	-	+	+	+
FABP5	-	+	-	+	+	-	+	-	+	+
Rot (nM)	-	-	-	-	100500	-	-	-	-	100500



D WB: FABP5

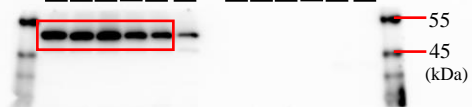
	Triton-soluble fraction					SDS-soluble fraction				
α Syn	-	-	+	+	+	-	-	+	+	+
FABP5	-	+	-	+	+	-	+	-	+	+
Rot (nM)	-	-	-	-	100500	-	-	-	-	100500



B

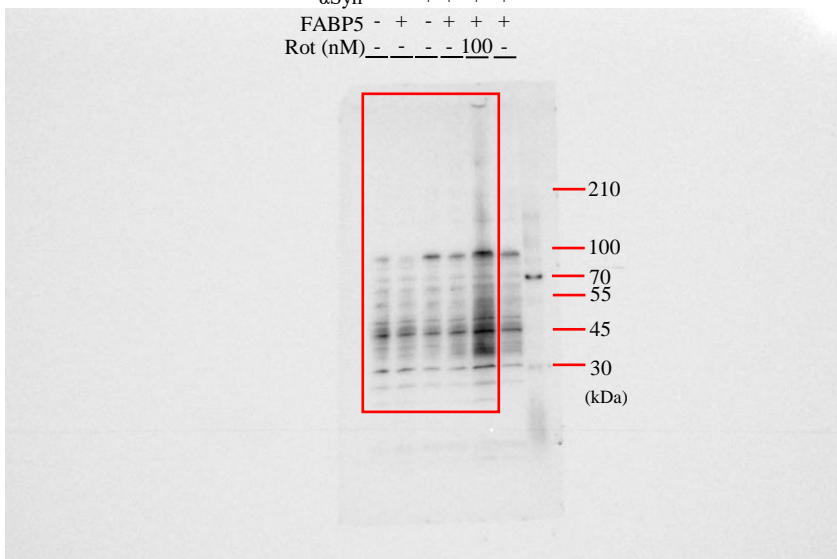
WB: β -tubulin (re-blot from Fig 2B α Syn)

	Triton-soluble fraction					SDS-soluble fraction				
α Syn	-	-	+	+	+	-	-	+	+	+
FABP5	-	+	-	+	+	-	+	-	+	+
Rot (nM)	-	-	-	-	100500	-	-	-	-	100500



C WB: α Syn

	SDS-soluble fraction				
α Syn	-	-	+	+	+
FABP5	-	+	-	+	+
Rot (nM)	-	-	-	-	100



E WB: FABP5 (re-blot from Fig. 2C α Syn)

	SDS-soluble fraction				
α Syn	-	-	+	+	+
FABP5	-	+	-	+	+
Rot (nM)	-	-	-	-	100

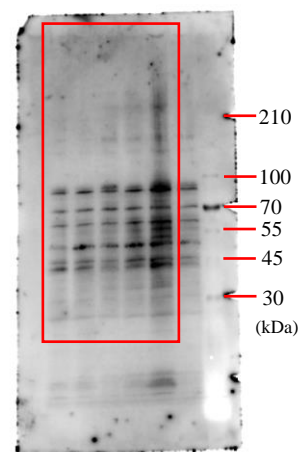


Figure 5 - original images

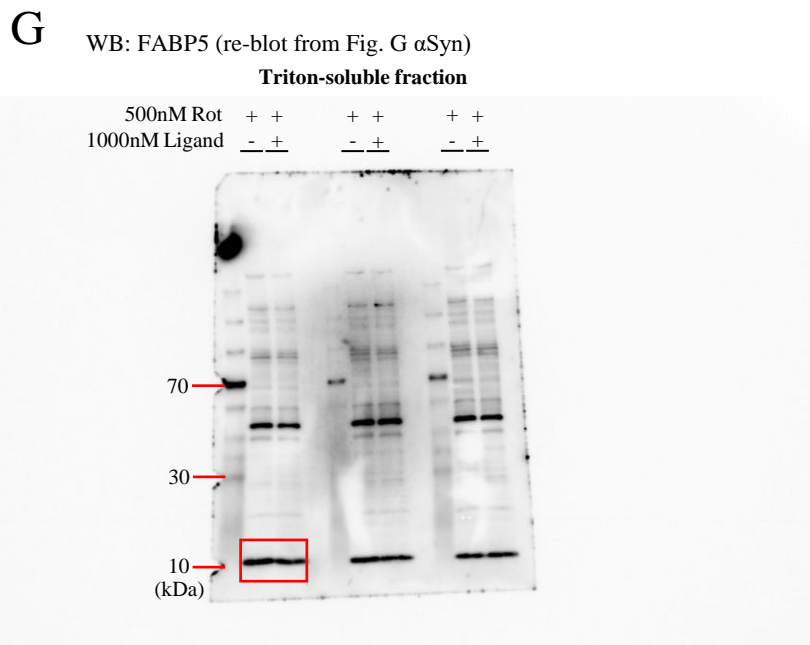
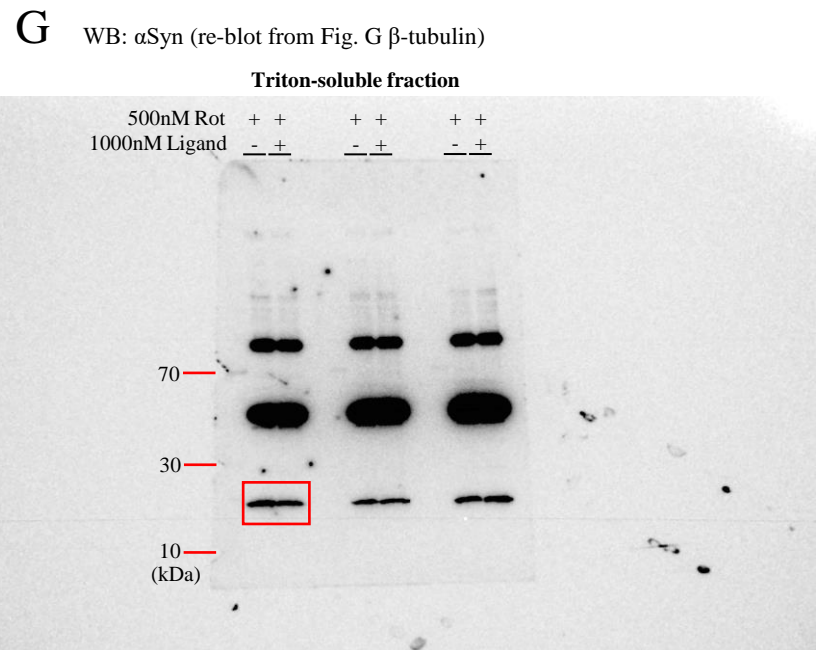
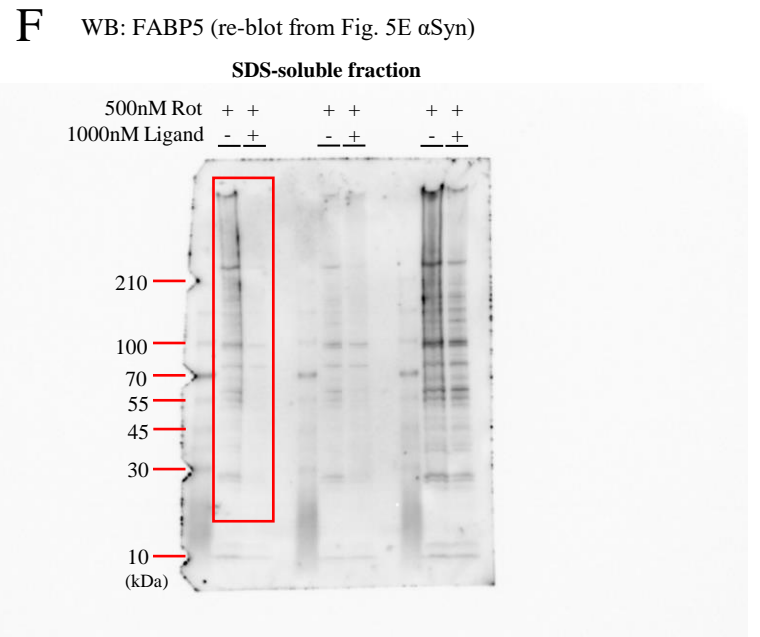
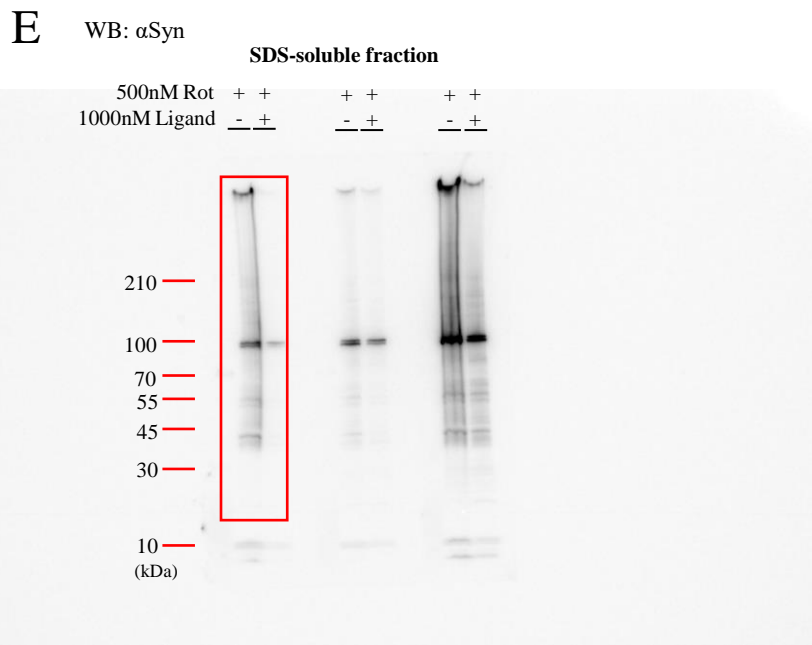


Figure 6 - original images

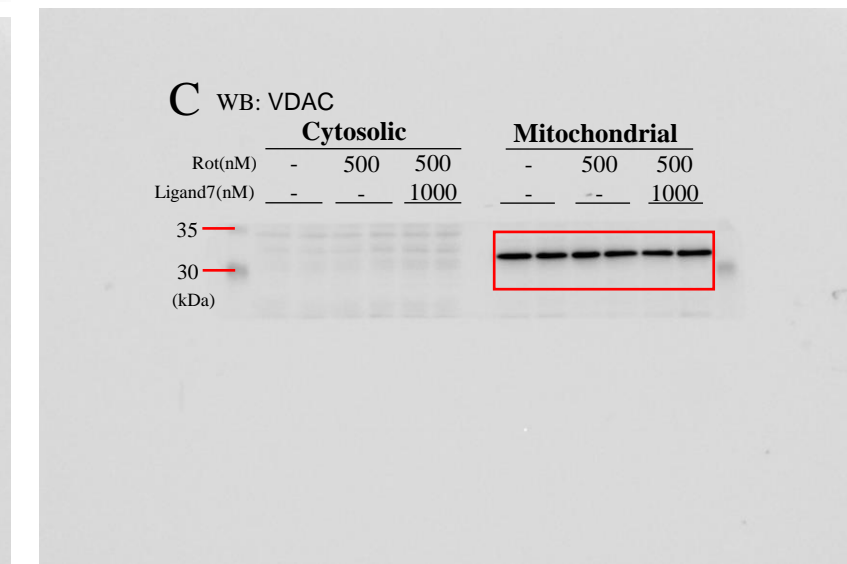
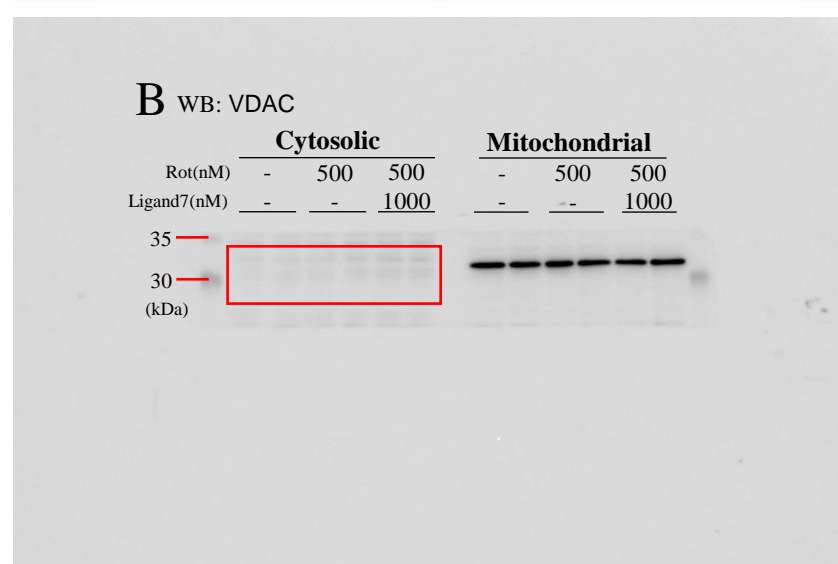
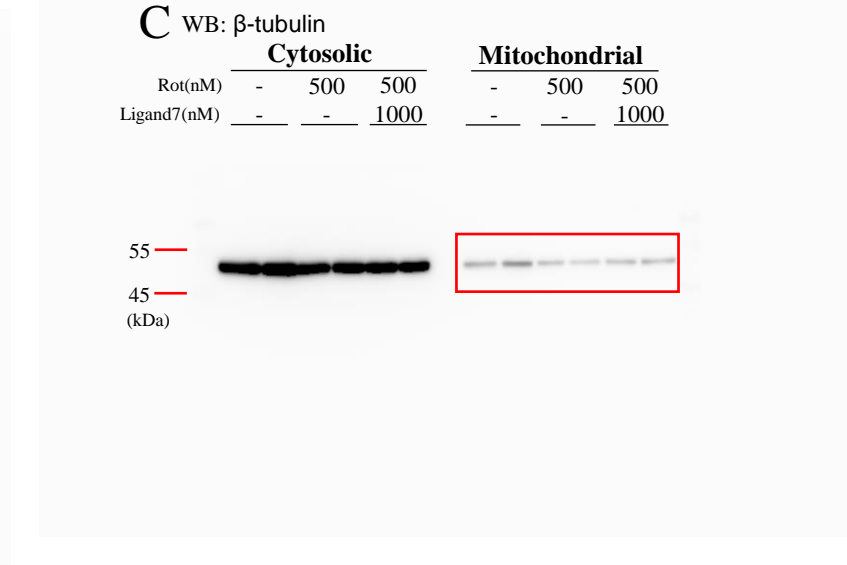
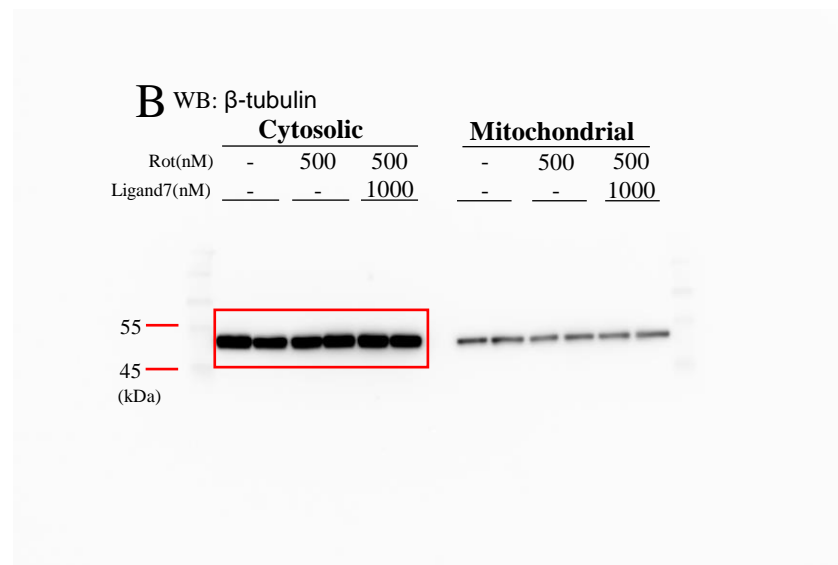
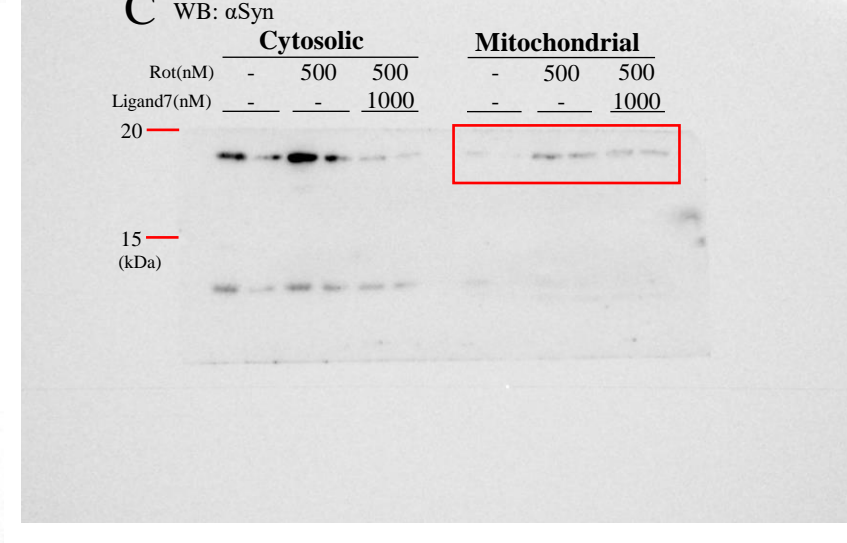
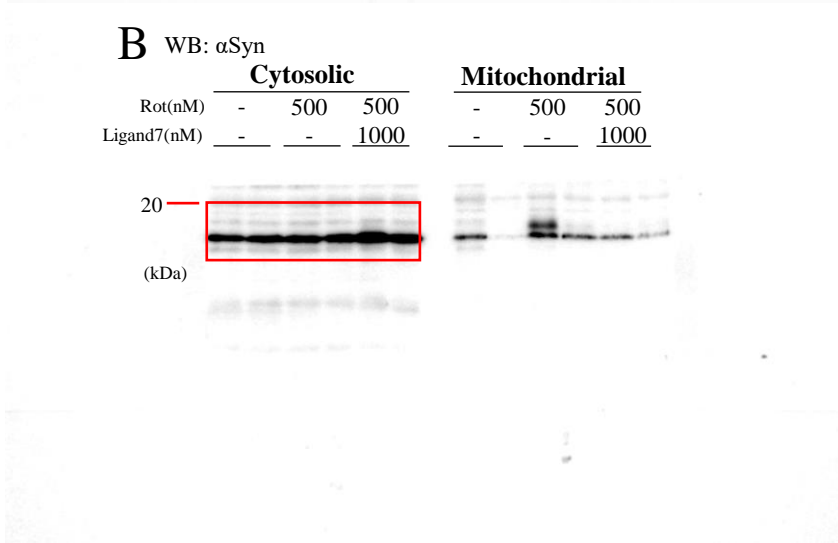
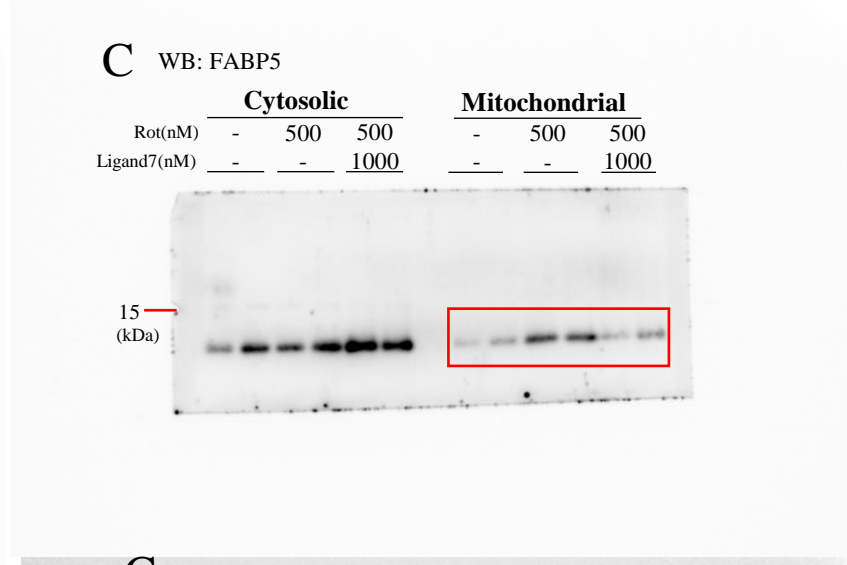
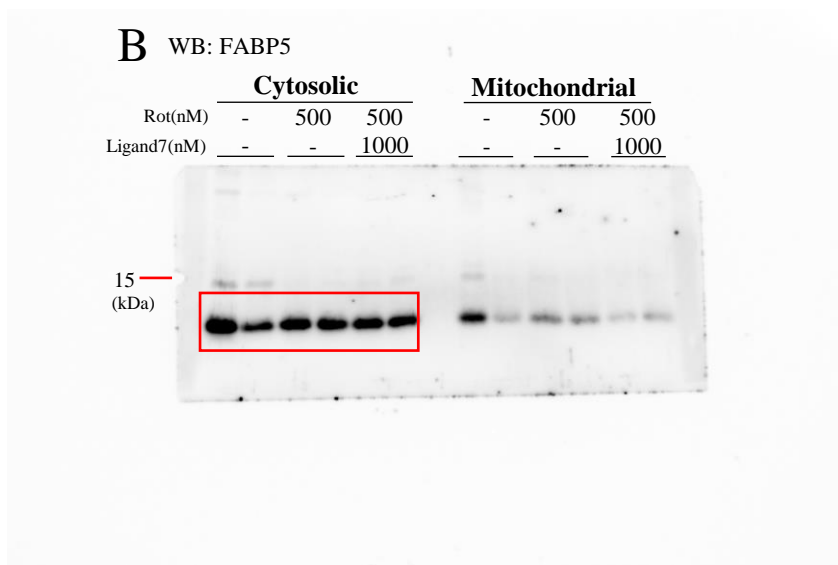


Figure S1 - original images

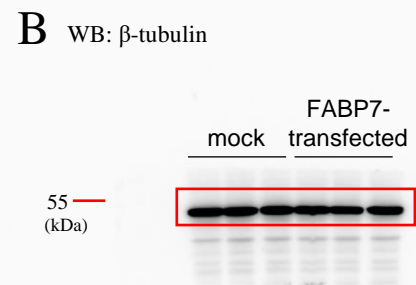
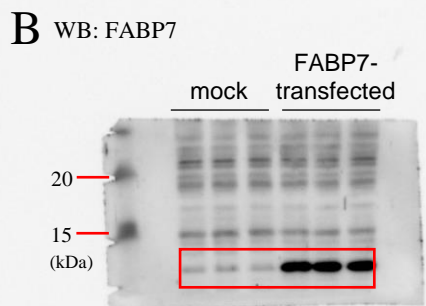
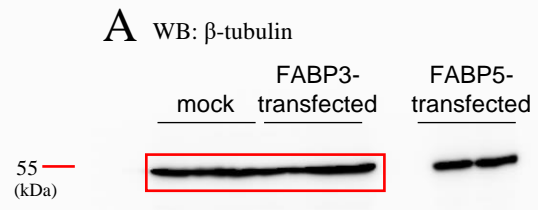
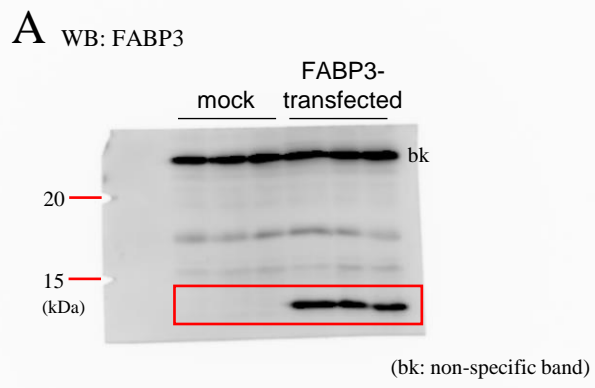
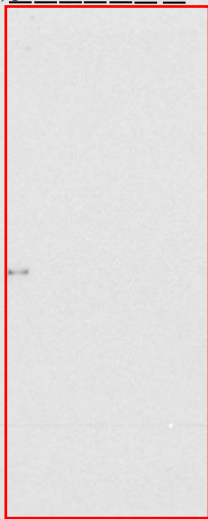


Figure S2 - original images

WB: without primary antibody and subsequently probing with anti-mouse IgG secondary antibody. (pl: protein ladder)

A Triton-soluble fraction

α Syn	-	-	+	+	+	+
FABP5	-	+	-	+	+	+
Rot (nM)	pl	-	-	-	100	500



B SDS-soluble fraction

α Syn	-	-	+	+	+	+
FABP5	-	+	-	+	+	+
Rot (nM)	pl	-	-	-	100	500

