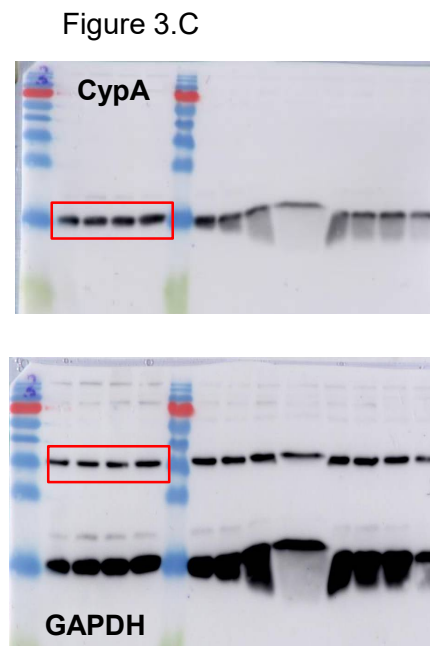
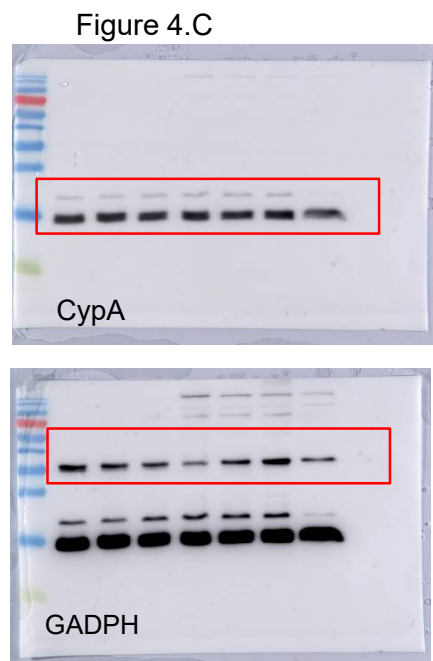
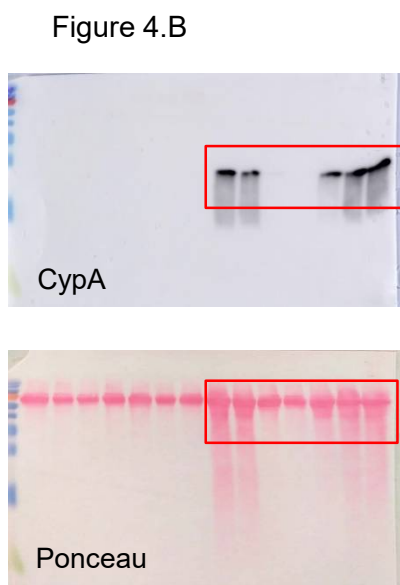


**Supplementary figure 1. Uncropped gel scans merged with molecular weight marker for all presented Western blots. A) Corresponds to Fig. 1. B) Corresponds to Fig. 2.**

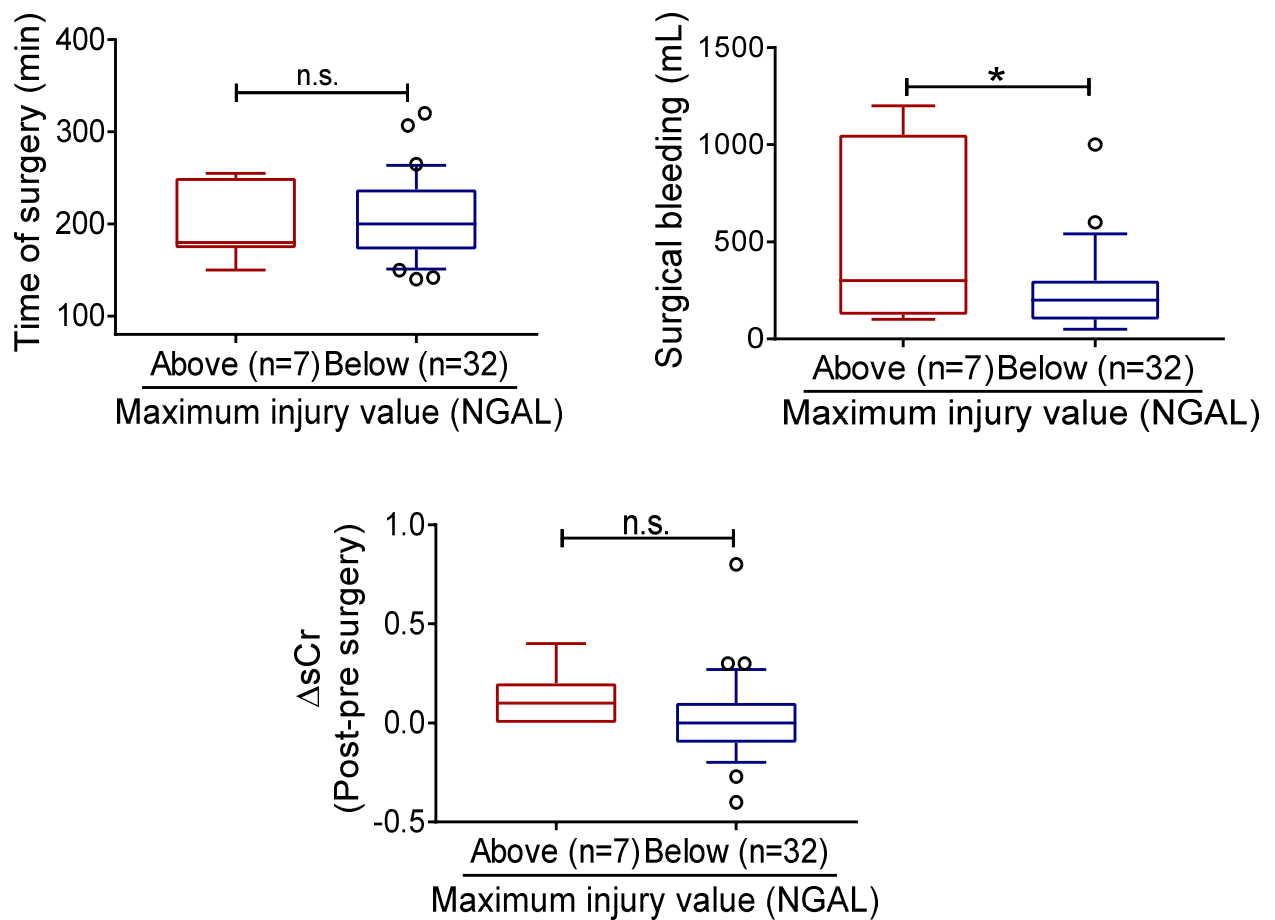
**A)**



**B)**

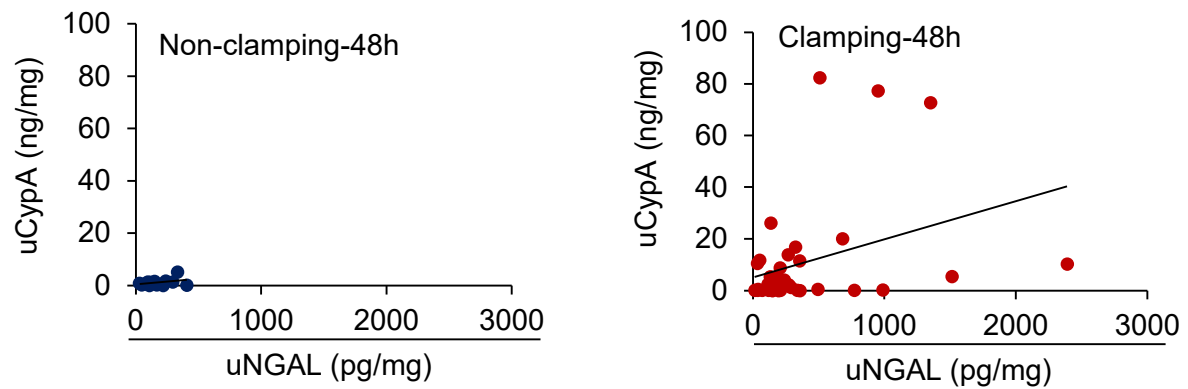


**Supplementary figure 2. Uncropped gel scans merged with molecular weight marker for all presented Western blots. A) Corresponds to Fig. 3. B) Corresponds to Fig. 4.**



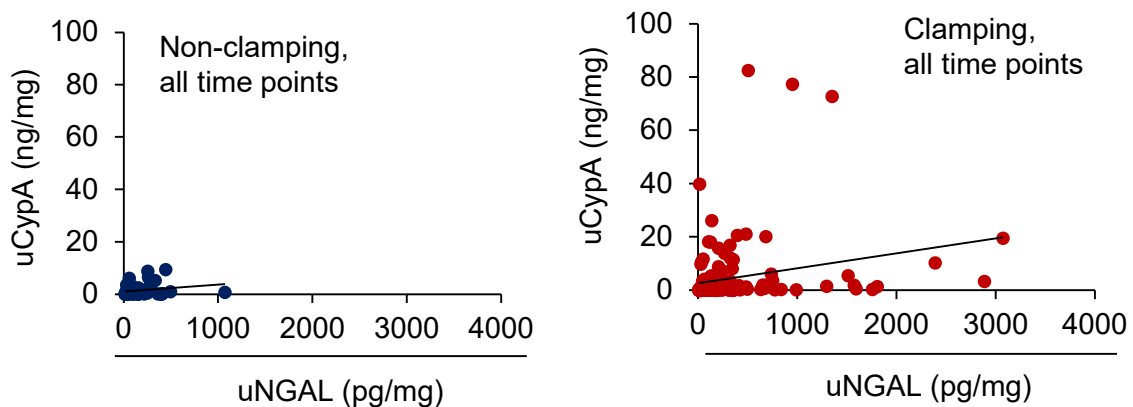
**Supplementary Figure 3. uNGAL levels in NSS patients.** Time of surgery, surgical bleeding and increase of sCr in patients with uNGAL above maximum injury levels. Data are presented as box plots that show the mean, 25/75 percentiles (box), and 10/90 percentiles (bars). \* $p < 0.05$ .

**A)**



	Non-clamping 48h	Clamping 48h
R (Pearson)	0.340	0.344
p-value	0.255	0.037

**B)**



	Non-clamping, all time points	Clamping, all time points
R (Pearson)	0.167	0.238
p-value	0.241	0.002

**Supplementary figure 4. Correlation between uCypA and uNGAL in NSS patients. A)** At 48h post-surgery. **B)** All samples, including pre-surgery samples.